

Lassen County Community Wildfire Protection Plan 2010 Work Plan

Lassen County



March 2010



Representatives of resource, fire planning and prevention interests met on February 2, 2010 to develop the Lassen County Community Wildfire Protection Plan 2010 Work Plan. The process began in December of 2009, through on line collaboration and reporting, and it was completed in late March of 2010.

Pictured at the annual meeting above are, from left to right: Brian Barns & Terri Frolli, Lassen National Forest; ; Ed Merrill, BLM-Eagle Lake Field Office; Cathy Dirden, LCFSC; Mike Holmes, Lassen National Forest; Mark Pustejovs, RPF, Sierra Pacific Industries, Dan Douglas, Lassen County Transportation & LCFSC; Joe Waterman & Ivan Houser, CalFire; Laurence Crabtree, Modoc National Forest; Mike Mitzel, RPF, Sierra Pacific Industries; Boyd Turner, Modoc National Forest, Rod Lacey, Plumas National Forest; Al Savage, BLM Alturas Field Office; Heather Munn & Jon Lamb, Lloyd, Plumas National Forest; Keefer, Chairman, Lassen County Board of Supervisors; Frank Stewart, RPF, CAFSC and Quincy Library Group; Erin Paxton, Sierra Nevada Conservancy; Tom Esgate, LCFSC.

Table of Contents

Priority Private Land Project List	v
2010 Wildland Urban Interface (WUI) Map	1
2010 CWPP Base Map	2
Private Land Projects	
Lassen County Fire Safe Council, Inc. Narrative	3
Ash	4
Clear Creek	5
Day Lassen Bench	6
Diamond Mountain	7
Janesville	8
Hog Flat Fuel Break	9
Lake Forest	10
Little Valley	11
Spaulding	12
Susanville Fuel Reduction & Watershed Restoration Project	13
Private & Public Land Projects	
Cooperative Sagebrush Steppe Restoration Initiative	
Ash Valley III	14
Ash Valley IV	15
McBride Springs	16
South Knob	17
Tribal Land Projects	
Susanville Indian Rancheria	
Upper Rancheria Fuel Break	18
SIR 875 Fuel Break	19
Cradle Valley	20
Public Agency Projects	
Bureau of Land Management, Alturas Field Office Narrative	21
South Mitchell Hill Juniper Cut	22
Johns Valley Prescribed Burn	23
Likely Stewardship	24
South Ash Valley Juniper Reduction	25
Knox Mountain Timber Sale	26
Mitchell Hill Juniper Cut	27
Williams Ranch Restoration	28
Day Road Shaded Fuel Break	29
Blue Door Juniper Cut	30
Cold Springs Juniper Cut	31
Stipa/Harder Prescribed Fire	32
Ash Valley Ranch Juniper Reduction	33

Bureau of Land Management, Eagle Lake Field Office Narrative	34
Stones-Bengard	35
South Cleghorn Stewardship	36
North Horse Stewardship	37
South Grasshopper Stewardship	38
Dodge Reservoir	39
Heavey Mountain Stewardship	40
Jacks Valley Stewardship	41
Lassen National Forest, Eagle Lake Ranger District	
Bailey Restoration Project	42
Diamond Mountain	43
Eblis Eastside Pine Restoration	44
Eagle Lake Recreation Restoration	45
Ebey Eastside Pine Restoration	46
Elysian Valley	47
Orphan	48
Willow	49
Modoc National Forest, Big Valley Ranger District	
Ash Vegetation Treatments	50
Willow Creek	51

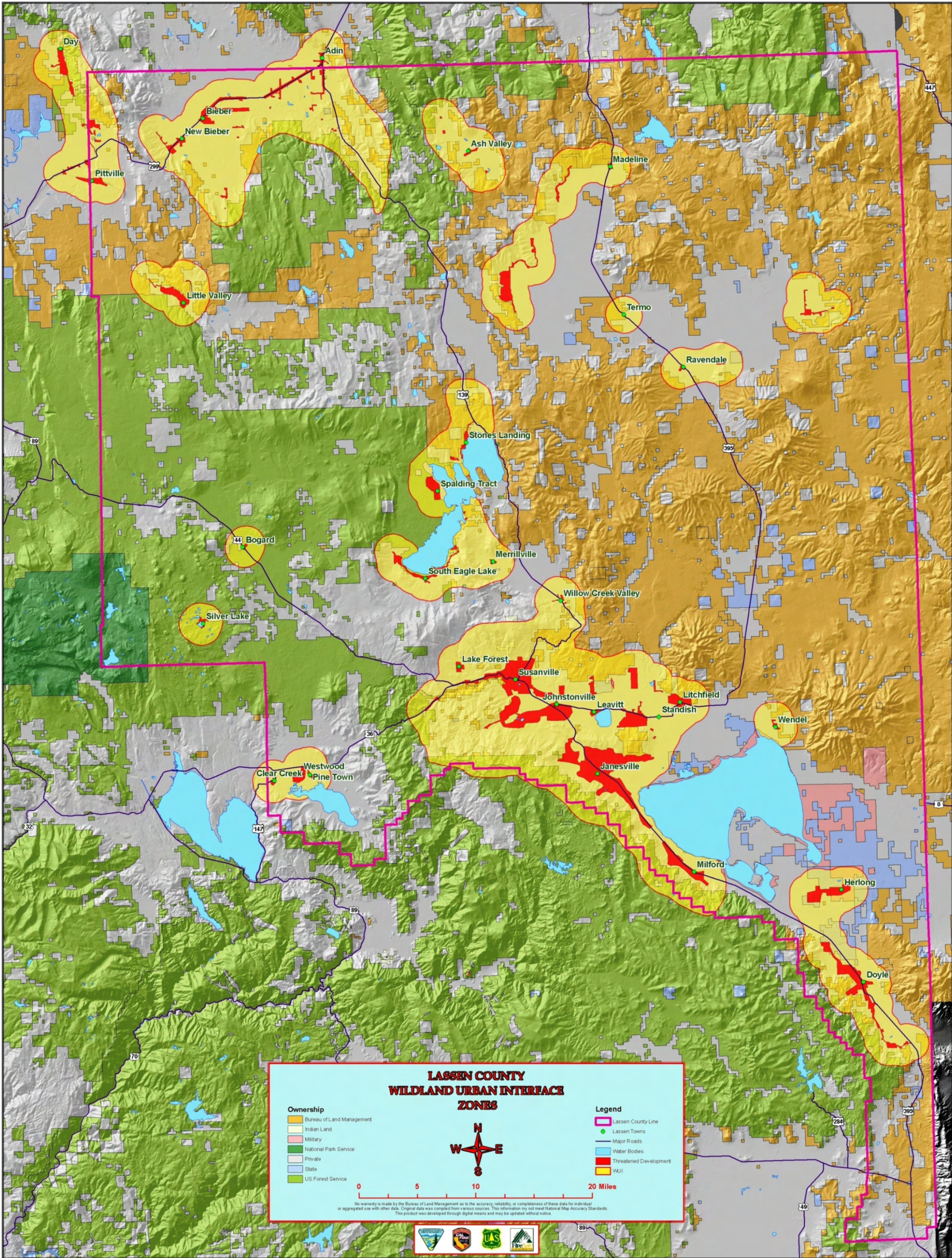
CalFire Lassen Modoc Unit Fire Plan

Incorporated into the Lassen County CWPP 2009 Work Plan by Reference:

www.fire.ca.gov

2010 CWPP Work Plan Private Land Priority Projects

- 1. Clear Creek**
- 2. Lake Forest**
- 3. Susanville Fuel Reduction & Watershed Restoration Project**
- 4. Janesville**
- 5. Day Lassen Bench**
- 6. Diamond Mountain**
- 7. Little Valley**
- 8. Spaulding**
- 9. Hog Flat**
- 10. Ash Valley IV**
- 11. Ash**



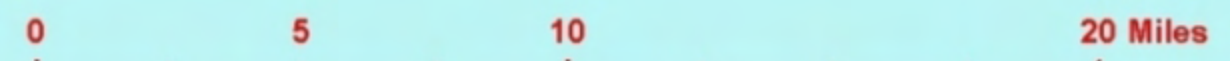
**LASSEN COUNTY
WILDLAND URBAN INTERFACE
ZONES**

Ownership

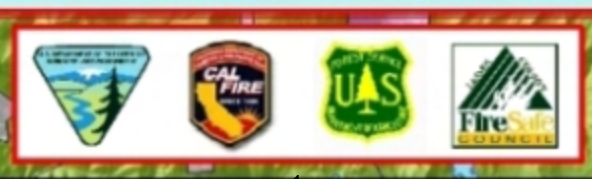
- Bureau of Land Management
- Indian Land
- Military
- National Park Service
- Private
- State
- US Forest Service

Legend

- Lassen County Line
- Lassen Towns
- Major Roads
- Water Bodies
- Threatened Development
- WUI



No warranty is made by the Bureau of Land Management as to the accuracy, reliability, or completeness of these data for individual or aggregated use with other data. Original data was compiled from various sources. This information may not meet National Map Accuracy Standards. This product was developed through digital means and may be updated without notice.



Lassen County Fire Safe Council

County Fire Plan Base Map
2 February 2010

DRAFT

DRAFT

Fuel Reduction Projects

- | | |
|---|----------------------------------|
| USFS Projects | BLM Projects |
| Awarded/Completed | Awarded/Completed |
| Planning/In-Progress | Planning/In-Progress |
| Industrial Timberlands | Other Private Timberlands |
| Awarded/Completed | Awarded/Completed |
| Planning/In-Progress | Planning/In-Progress |
| Lassen County Fire Safe Council Projects | |
| Awarded/Completed | |
| Planning/In-Progress | |

- WUI**
- Wildland Urban Interface (WUI)
 - Communities

- Ownership**
- National Forest
 - BLM
 - NPS and Other Federal
 - State and Local
 - Other Ownership

Background Layers

- Major Roads
- Secondary Roads
- County Boundary
- Wilderness



0 5 10 Miles

Disclaimer Statement
The USDA Forest Service uses the most current and complete data available. GIS data and product accuracy may vary. They may be developed from sources of differing accuracy, accurate only at certain scales, based on modeling or interpretation, incomplete while being created or revised, etc. Using GIS products for purposes other than those for which they were intended may yield inaccurate or misleading results. The USDA Forest Service reserves the right to correct, update, modify, or replace GIS products without notification.

"Lassen Fire Safe Council Base Map.pdf" filed @ K:\tim\gis, or BJB's PC @ C:\WorkSpace\CWPP Modified February 2, 2010 by Brian Barns, Eagle Lake District GIS Coordinator



Lassen County Fire Safe Council, Inc.
PO Box 816
Susanville, CA 96130

Tom Esgate
Managing Director
(530) 310-0146

twesgate@sbcglobal.net

Cathy Dirden
Secretary
(530) 251-5560

mcdirden@hotmail.com

March 31, 2010

This year marks the 4th year that the Lassen County Community Wildfire Protection Plan (CWPP) Working Group has gathered, reviewed and ranked projects and reviewed and adopted changes to the Wildland Urban Interface boundaries throughout the county. Each year we are finding more ways to work collaboratively together.

Lassen County Fire Safe Council, Inc. continues to build on our strong partnerships and we have an aggressive program of active and planned fuel treatments. We are also ramping up the pace of getting communities organized into the *Firewise Communities USA* program. Part and parcel of this effort is our one on one contact with residents through our Risk Assessment in the Home Ignition Zone consultations. Here residents learn what they can do to reduce structural ignitability in the advent of a nearby wildfire.

None of this would be possible without the Title III Fund financial support that has been granted to us by the Lassen County Board of Supervisors. They support our activities and in turn we leverage these funds to bring more fuel treatments and more Firewise/Fire Safe programs that help protect residents and help residents protect themselves.

A big thank you to all our partners in the Lassen County CWPP Working Group,

Tom Esgate,
Managing Director

**Lassen County CWPP 2010 Work Plan
Ash Valley WUI**

**Unfunded Acres Unknown
2010 Planning**

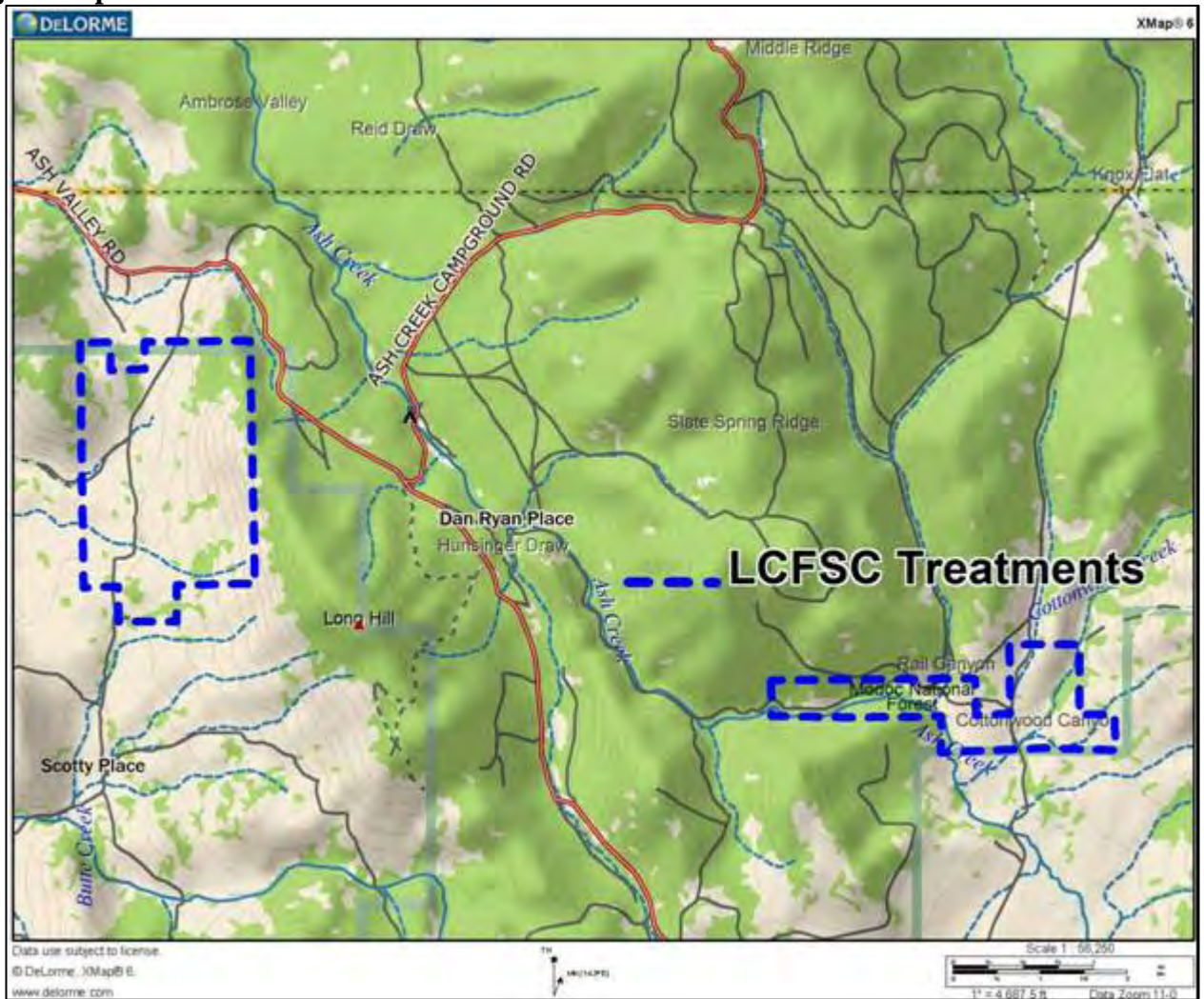
Agency: Lassen County Fire Safe Council

Project: Ash

Project Coordinates: N41.1435 W120.8013

Summary: LCFSC will begin planning with the Modoc National Forest (MDF) on a collaborative fuels treatment project west and north of the Ash Valley Community. MDF will be the lead for USFS land and LCFSC will be the lead for private land within the project area. It is anticipated the LCFSC will be asking for assistance from CAFSC, CalFire, NRCS and USFS with funding.

Project Map:



**Lassen County CWPP 2010 Work Plan
Westwood/Clear Creek WUI**

**Unfunded 500 Acres
2010 Planning**

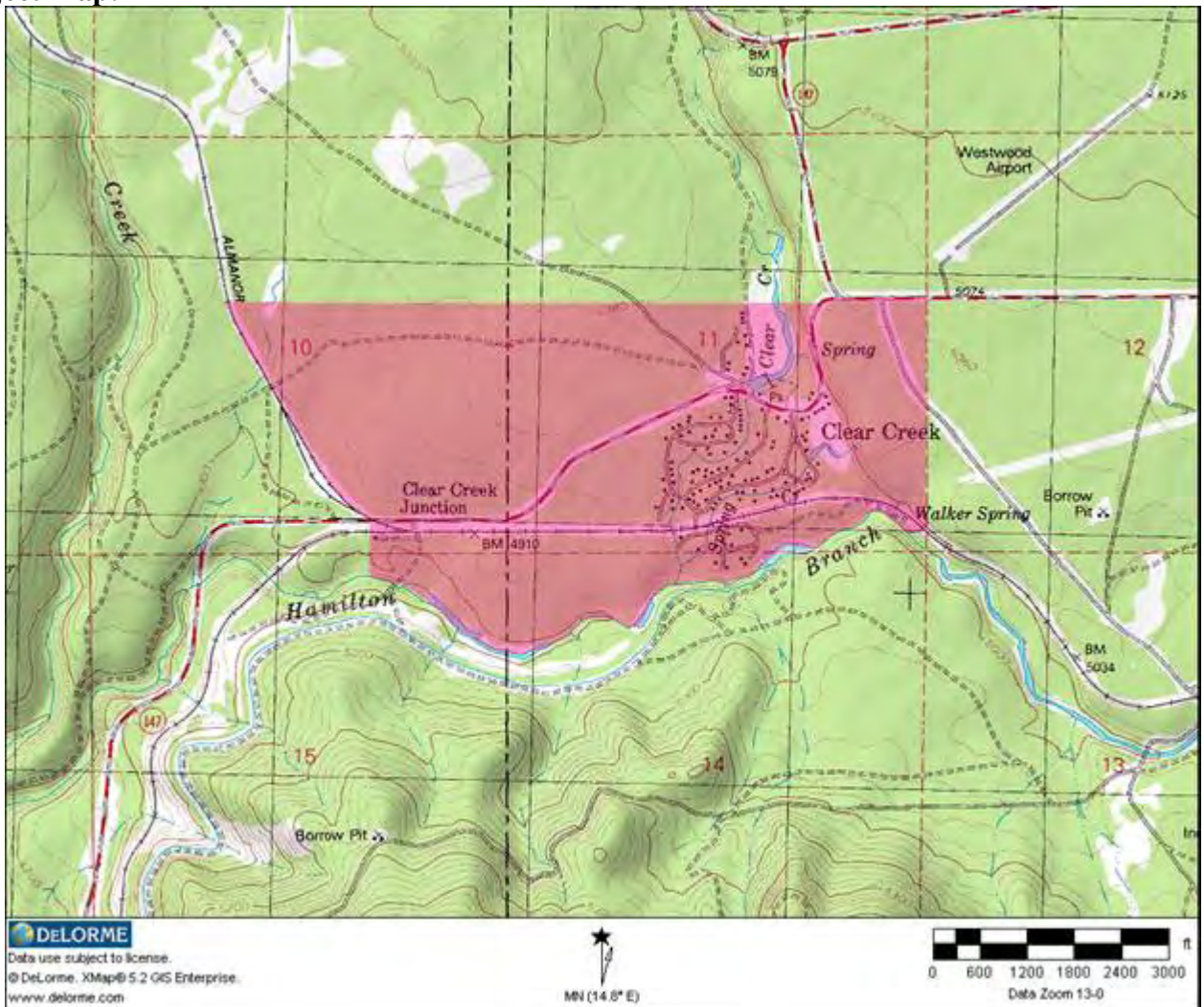
Agency: Lassen County Fire Safe Council, Inc. and Sierra Pacific Industries

Project: Clear Creek

Project Coordinates: N40.29713 W121.05630

Summary: LCFSC, with its partner SPI, will be applying for implementation funds to perform risk/structure ignitability assessments in the home ignition zone and to implement a fuel reduction project within and around the Clear Creek community in Lassen County. We will be asking for assistance from CAFSC, CalFire, USFS and BLM. SPI will be the lead for fuel treatments around the Clear Creek community and LCFSC will be the lead for treatments within the community and for conducting the home risk assessments. 500 total treatment acres.

Project Map:



**Lassen County CWPP 2010 Work Plan
Day Lassen Bench WUI**

**Partially Funded (100 Acres)
2010 Implementation**

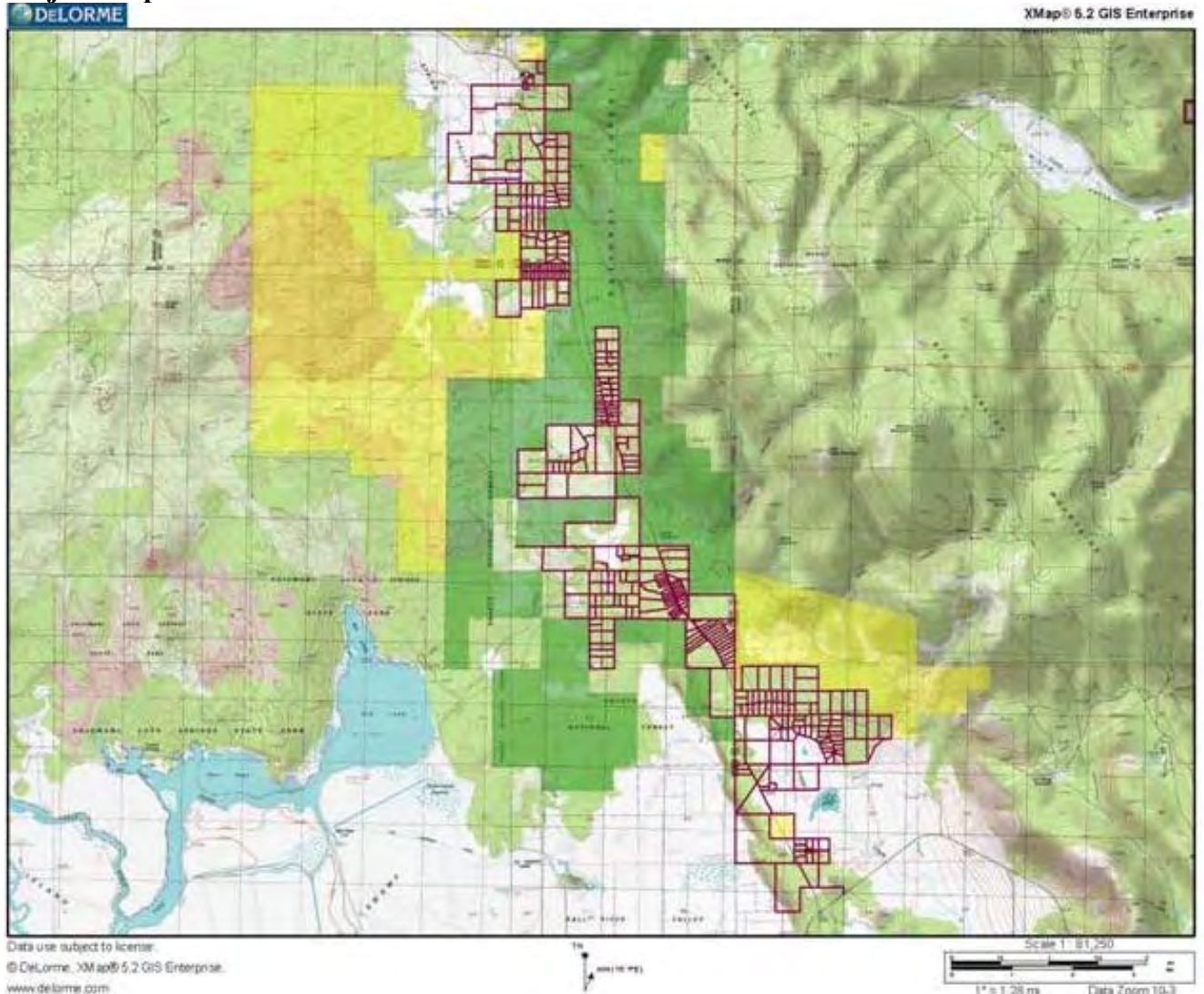
Agency: Day Lassen Bench Fire Safe Council, Inc.

Project: Day Lassen Bench III Fuel Reduction and Risk Assessments

Project Coordinates: N41.1538 W120.3539

Summary: DLBFSC & LCFSC are continuing their partnership with fuel treatments and risk/structure ignitability assessments within the home ignition zone. Work is being funded through the Sierra Nevada Conservancy, but is currently on hold due to the state budget crisis. Work consists of thinning/shearing/chipping of trees and mastication of brush. Almost 1,500 acres has been completed to date and the project is funded into 2010. The partners plan to treat at least an additional 100 acres in 2010 and have received Title III funds from Modoc County to support their *Firewise Communities USA* activities.

Project Map:



**Lassen County CWPP 2010 Work Plan
Susanville WUI**

**Unfunded Acres Unknown
2010 Planning**

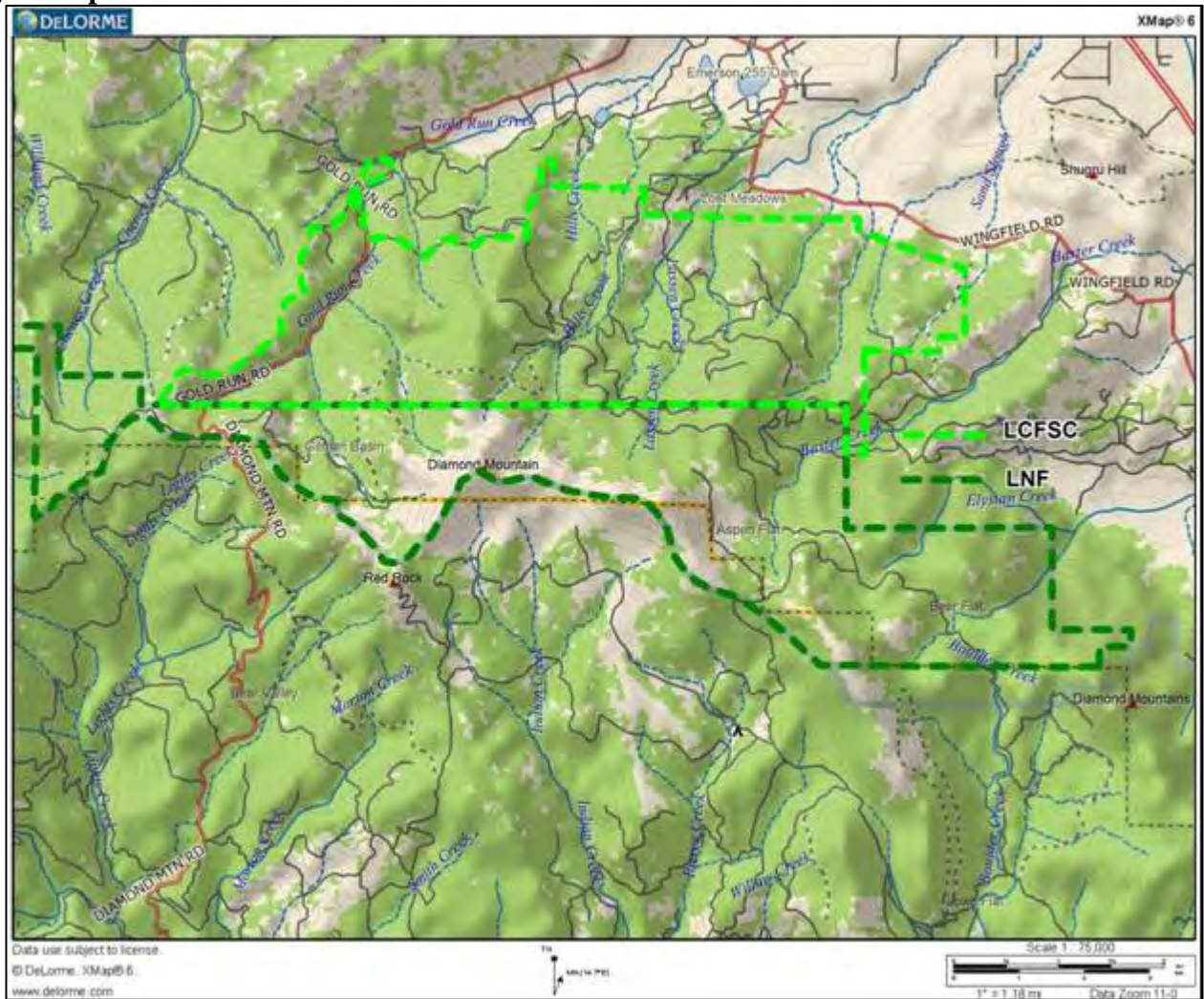
Agency: **Lassen County Fire Safe Council**

Project: **Little Valley**

Project Coordinates: **N40.3214 W120.6690**

Summary: LCFSC will begin planning with the Lassen National Forest (LNF) on a collaborative fuels treatment project along and below Diamond Mountain south of Susanville. LNF will be the lead for USFS land and LCFSC will be the lead for private land within the project area. It is anticipated the LCFSC will be asking for assistance from CAFSC, CalFire and USFS with funding.

Project Map:



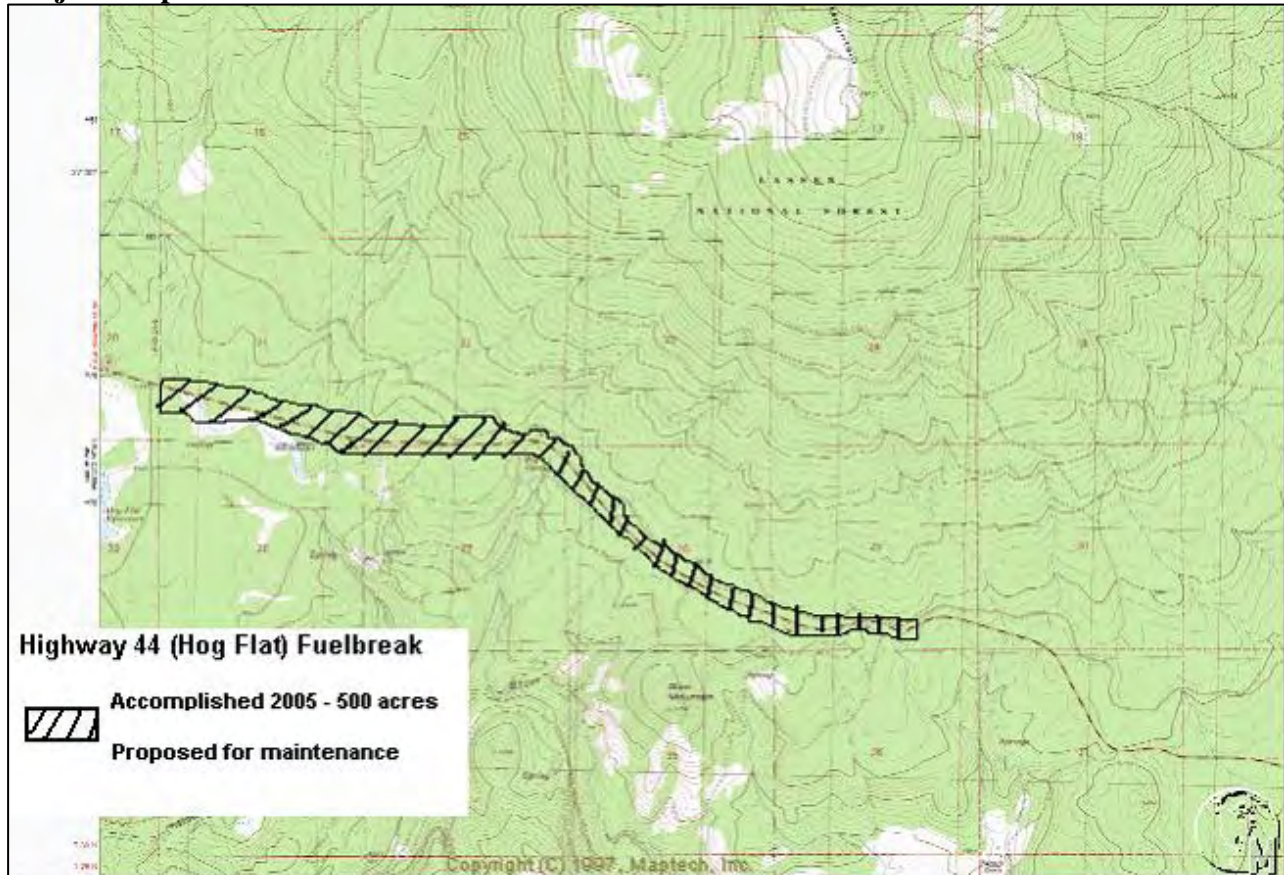
Agency: Lassen County Fire Safe Council, Inc. and Sierra Pacific Industries

Project: Hog Flat Fuelbreak

Project Coordinates: N40.43598 W120.83076

Summary: In 2005, Sierra Pacific Industries (SPI) completed a 500 acre fuelbreak on its lands adjacent to Highway 44, between the Goat Fire and Hog Flat Reservoir. Treatment method was mechanical harvest, with chipping and removal of biomass, accomplished under four timber harvest plans. CAL FIRE, in cooperation with SPI and Cal Trans, has completed a categorical exclusion for a project to improve the effectiveness of the existing fuelbreak by treating surface and ladder fuels in the Cal Trans right-of-way and adjoining SPI lands. CAL FIRE has entered into an agreement with Cal Trans to treat the Highway 44 right-of-way using crews from Antelope Camp. Lassen County Fire Safe Council, Inc. will partner with SPI to use these same crews to reduce surface fuel concentrations and ladder fuels in the adjoining fuelbreak, concentrating on those areas where equipment is unable to operate. Planned activities include hand cutting, chipping and/or piling and burning, of small (<10' dbh) trees, brush, and dead and downed material.

Project Map:



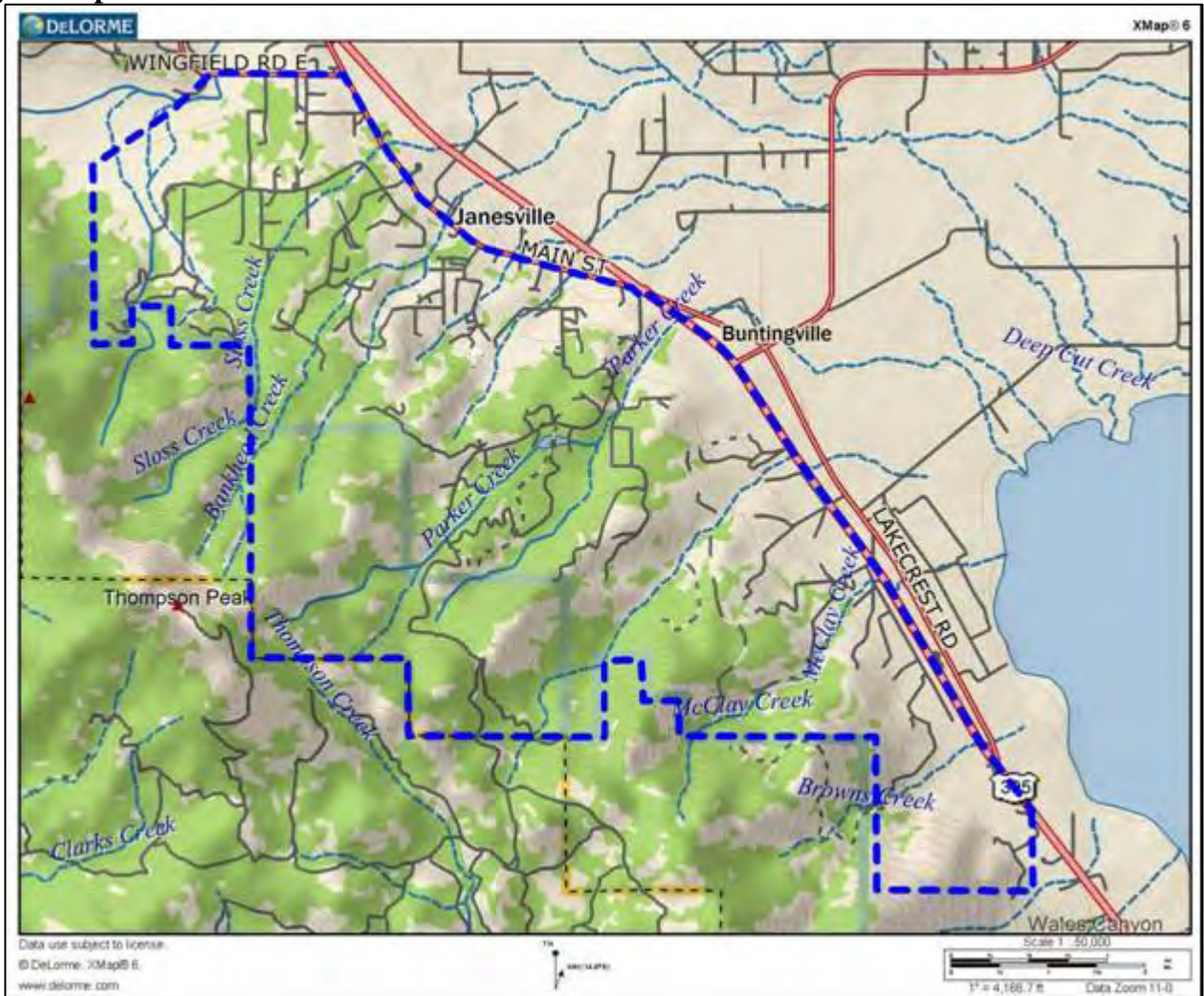
Agency: Lassen County Fire Safe Council, Inc./Janesville Fire Safe Council

Project: Janesville Fuel Reduction and Risk in the Home Ignition Zone Assessments

Project Coordinates: N40.26777 W120.49461

Summary: Project includes fuel treatments and risk assessments within the home ignition zone. The treatments include developing defensible space around homes and potentially 1,000 landscape scale fuel treatment. Brush fuels will be masticated where they pose a threat to homes and/or are within potential evacuation corridors. Biomass utilization of material will be used to reduce costs. Project area is primarily private land of a residential character with some non-industrial timber land. USFS, BLM, CalFire, Lassen County RAC and Lassen County Board of Supervisors have assisted with funding and consultation.

Project Map:



Lassen County CWPP 2010 Work Plan
Susanville WUI

Funded Project 420 Acres
2010/11 Implementation

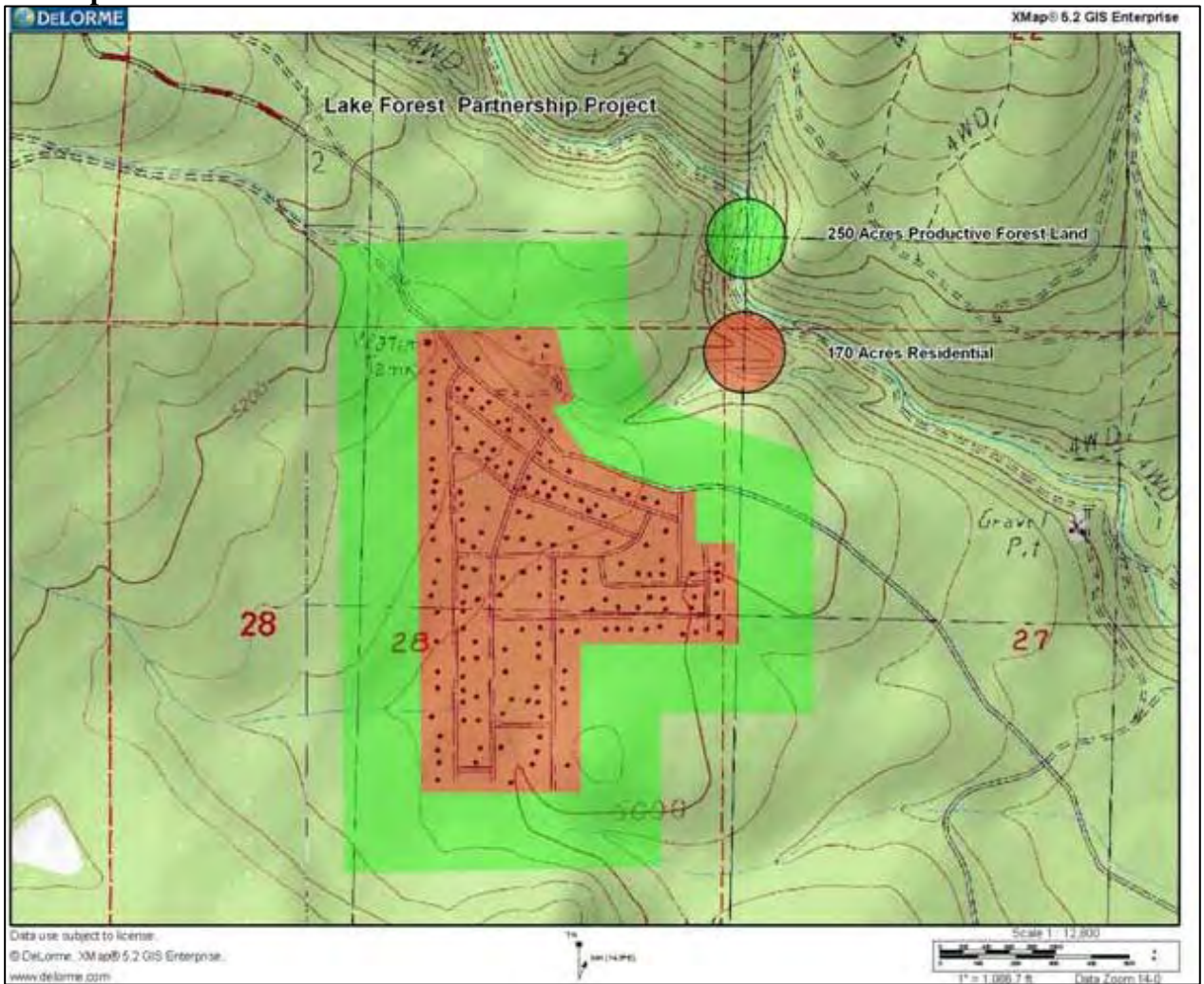
Agency: Lassen County Fire Safe Council, Inc./Sierra Pacific Industries

Project: Lake Forest Fuel Reduction and Risk in the Home Ignition Zone Assessments

Project Coordinates: N40.43368 W120.74358

Summary: LCFSC with its partner SPI will be implementing risk/structure ignitability assessments in the home ignition zone and fuel reduction treatments within and around the Lake Forest community in Lassen County. We will be working with CAFSC, CalFire, USFS and BLM. SPI will be the lead for fuel treatments around the Lake Forest community and LCFSC will be the lead for treatments within the community and for conducting the home risk assessments.

Project Map:



**Lassen County CWPP 2010 Work Plan
Little Valley WUI**

**Unfunded Acres Unknown
2010 Planning**

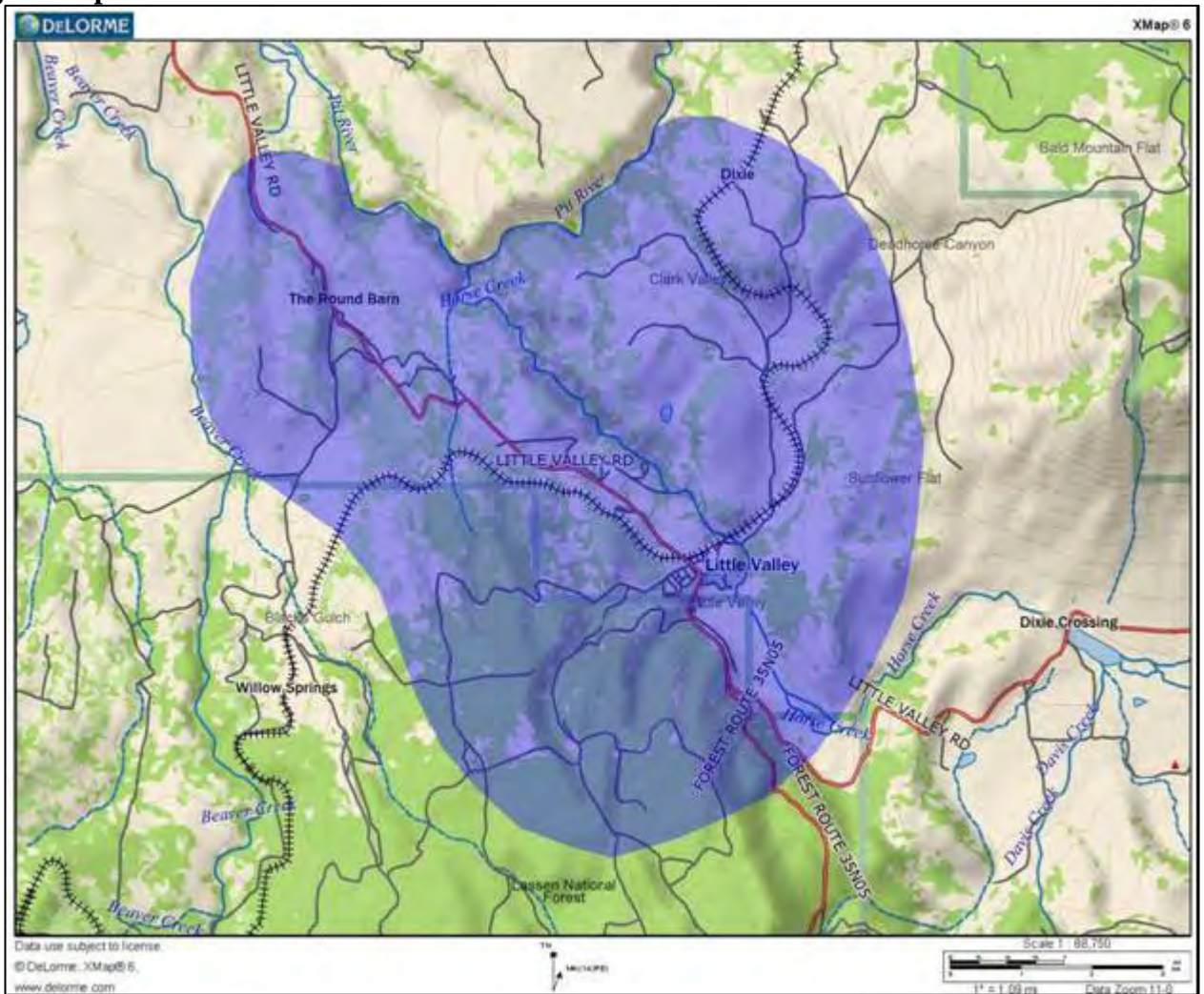
Agency: Lassen County Fire Safe Council

Project: Little Valley

Project Coordinates: N40.9058 W121.1947

Summary: LCFSC, with CCPI partners, will be developing plans and applying for implementation funds to implement fuel reduction projects and perform risk/structure ignitability assessments in the home ignition zone within and around the Little Valley community in Lassen County. LCFSC and our partners will be asking for assistance from CAFSC, CalFire, NRCS, USFS and BLM. It is anticipated that initial treatments will be landscape scale

Project Map:



**Lassen County CWPP 2010 Work Plan
Spaulding WUI**

**Unfunded 40 acres
2010/11 Implementation**

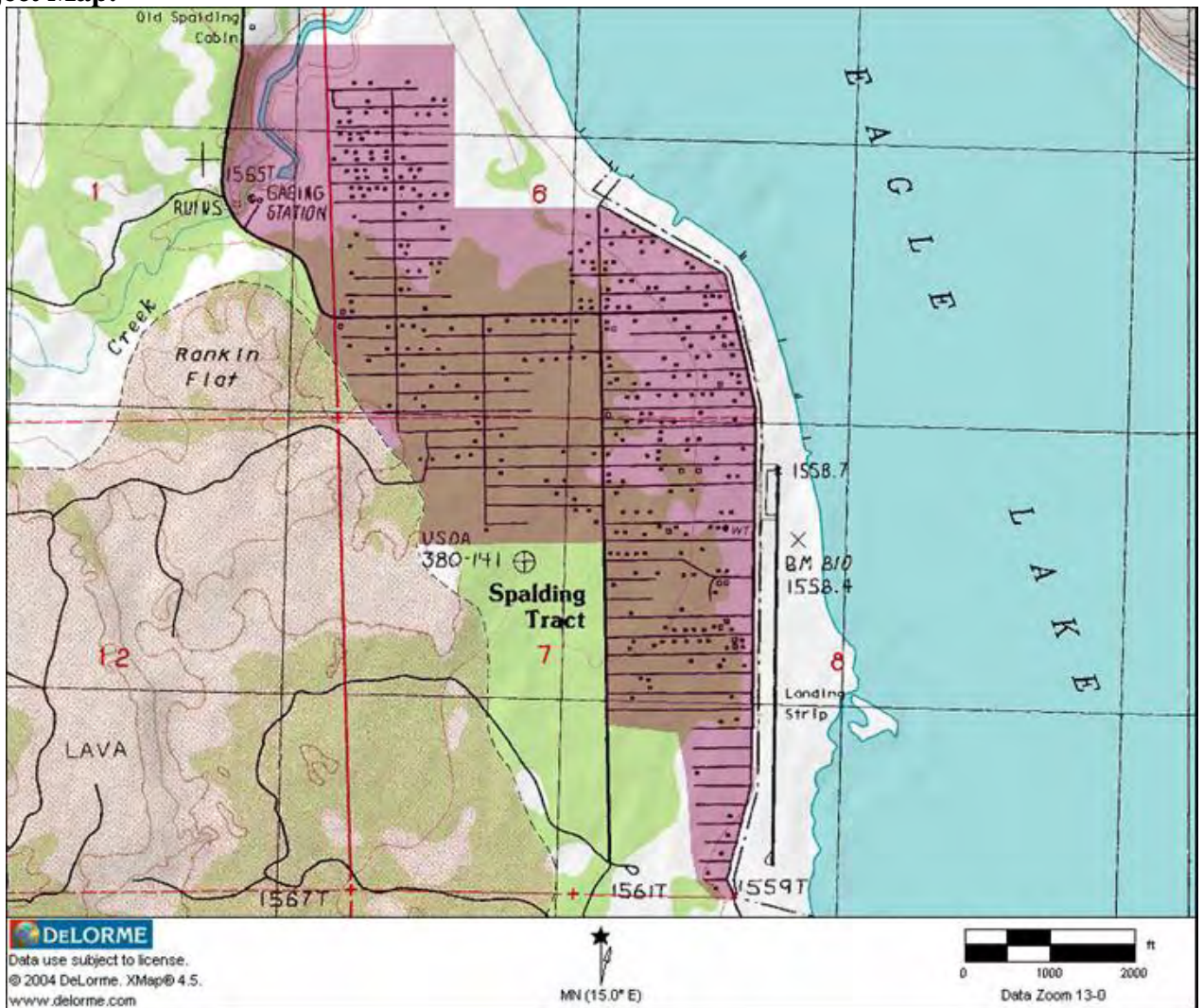
Agency: Lassen County Fire Safe Council, Inc.

**Project: Spaulding Fuel Reduction Planning and Risk in the Home Ignition Zone
Assessments**

Project Coordinates: N40.65734 W120.7759

Summary: LCFSC will be applying for funds to perform risk assessments in the home ignition zone and fuel reduction treatments within and around the Spaulding community in Lassen County. We will be asking for assistance from CAFSC, CalFire, USFS and BLM.

Project Map:



Agency: Lassen County Fire Safe Council, Inc.

Project: Susanville Fuel Reduction & Watershed Restoration Project

Project Coordinates: 40.3429 N 120.6648 W

Summary: Project includes fuel treatments and risk/structure ignitability assessments within the home ignition zone. The fuel treatments include developing defensible space around homes and potentially 5,000-6,000 landscape scale fuel treatment acres leaving 40% crown closures within mixed conifer forest. Invasive juniper will be removed in the Gold Run areas. Brush fuels will be masticated where they pose a threat to homes and/or are within potential evacuation corridors. Biomass utilization of material will be used to reduce costs. Project area is primarily private land of a residential character with some non-industrial timber land. CAFSC, USFS, BLM, CalFire, SNC, NRCS, Lassen County RAC, Pit RCD, Lassen County Board of Supervisors and the Susan River Fire District have assisted with funding and consultation.

Project Map:



**Lassen County CWPP 2010 Work Plan
Ash Valley WUI & DFPZ**

**Partially Funded 4,852 acres
2010/11 Implementation**

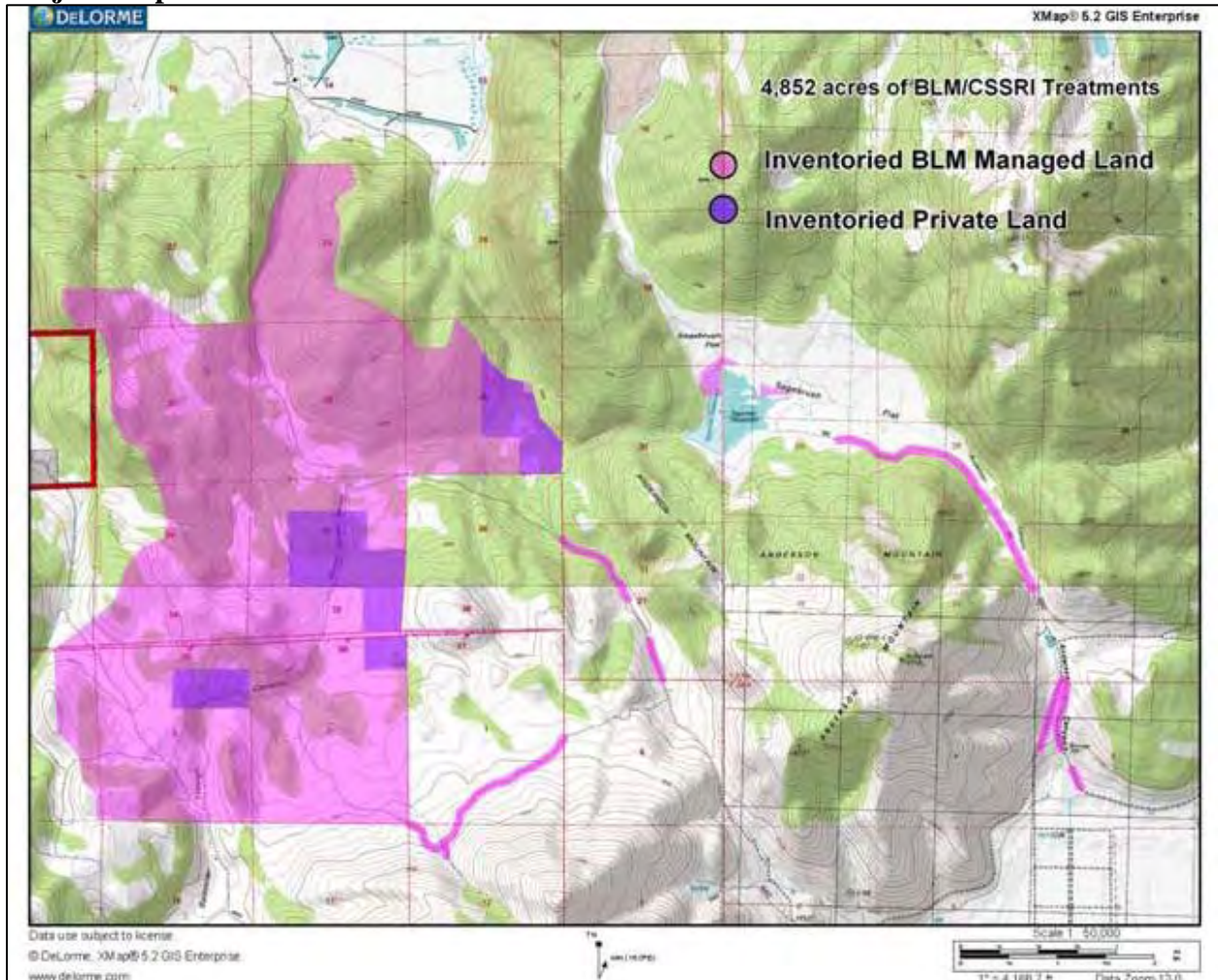
Agency: Cooperative Sagebrush Steppe Restoration Initiative/Pit RCD/LCFSC/SIR

Project: Ash Valley III Fuel Reduction

Project Coordinates: N40.9999 W120.6830

Summary: CSSRI, through its partners, is working with BLM to make applications with various agencies to fund treatments on Private and BLM managed lands. The NEPA clearance process is underway. Project connects the BLM South Ash Valley, CSSRI Ash Valley I, II & IV and the CSSRI South Knob projects. Work will consist of removal of invasive juniper through biomass utilization in an effort to reduce hazardous fuel loads and restore the watershed and wildlife habitat. Work will begin on the funded portion in 2010 and be completed by 2011, subject to funding availability. Project will be implemented in partnership with BLM, NRCS, USFWS, SNC (monitoring) and the *Cooperative Sagebrush Steppe Restoration Initiative* partnership and other funding partners.

Project Map:



**Lassen County CWPP 2010 Work Plan
Madeline WUI & DFPZ**

**Partially Funded 4,752 acres
2010/11 Implementation**

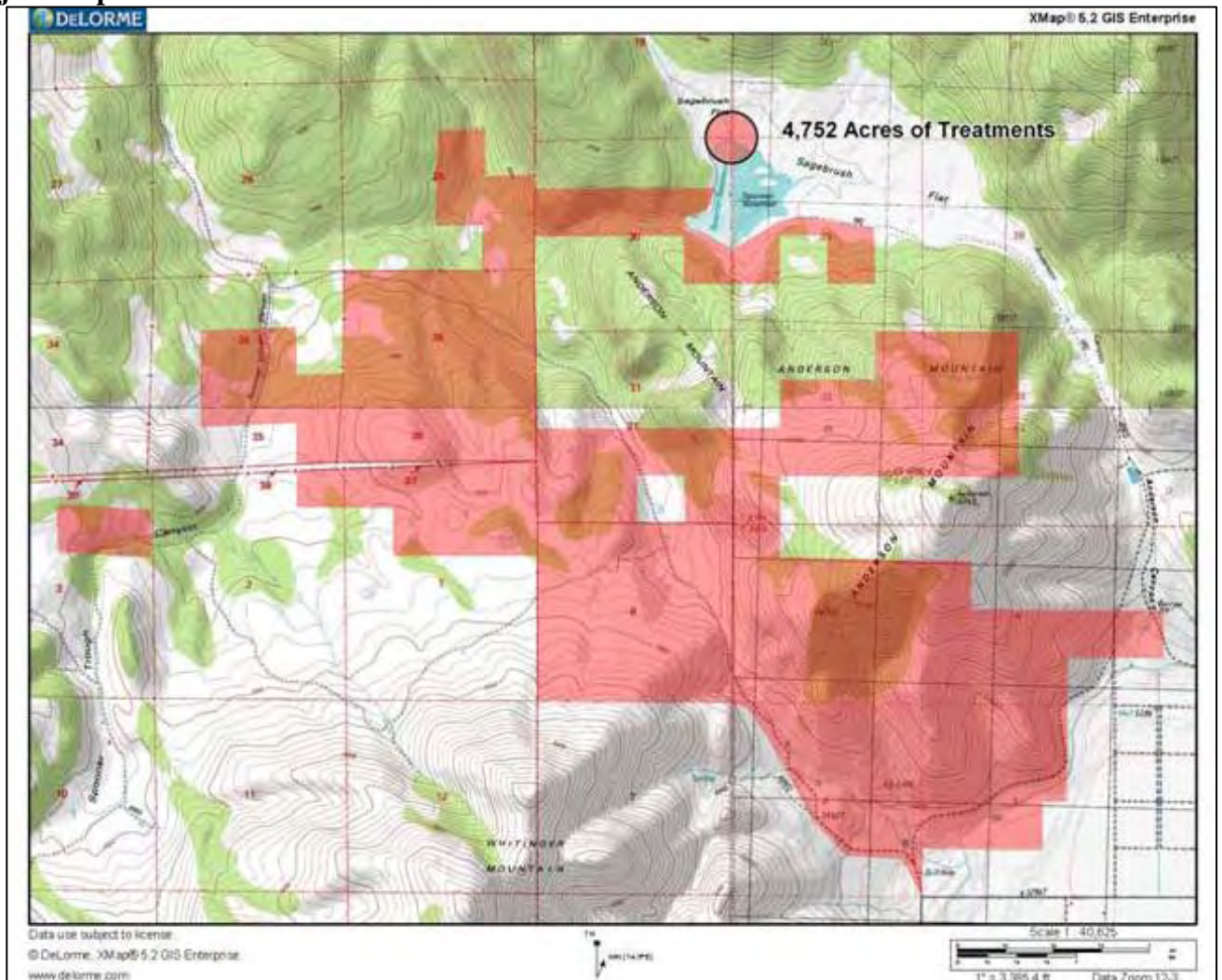
Agency: Cooperative Sagebrush Steppe Restoration Initiative/Pit RCD/LCFSC/SIR

Project: Ash Valley IV Fuel Reduction

Project Coordinates: N40.9911 W120.6252

Summary: CSSRI, through its partners, will continue to make applications with various agencies to fund treatments on private lands. Project connects the BLM South Ash Valley, CSSRI Ash Valley I, II, III and the CSSRI South Knob projects. Work will consist of removal of invasive juniper through biomass utilization in an effort to reduce hazardous fuel loads and restore the watershed and wildlife habitat. Work will begin on the funded portions in 2010 and be completed by 2011, subject to funding availability. Project will be implemented by the *Cooperative Sagebrush Steppe Restoration Initiative* partnership, private landowners and funding partners.

Project Map:



Lassen County CWPP 2010 Work Plan
McBride Springs DFPZ

Unfunded 743 acres
2009 Planning

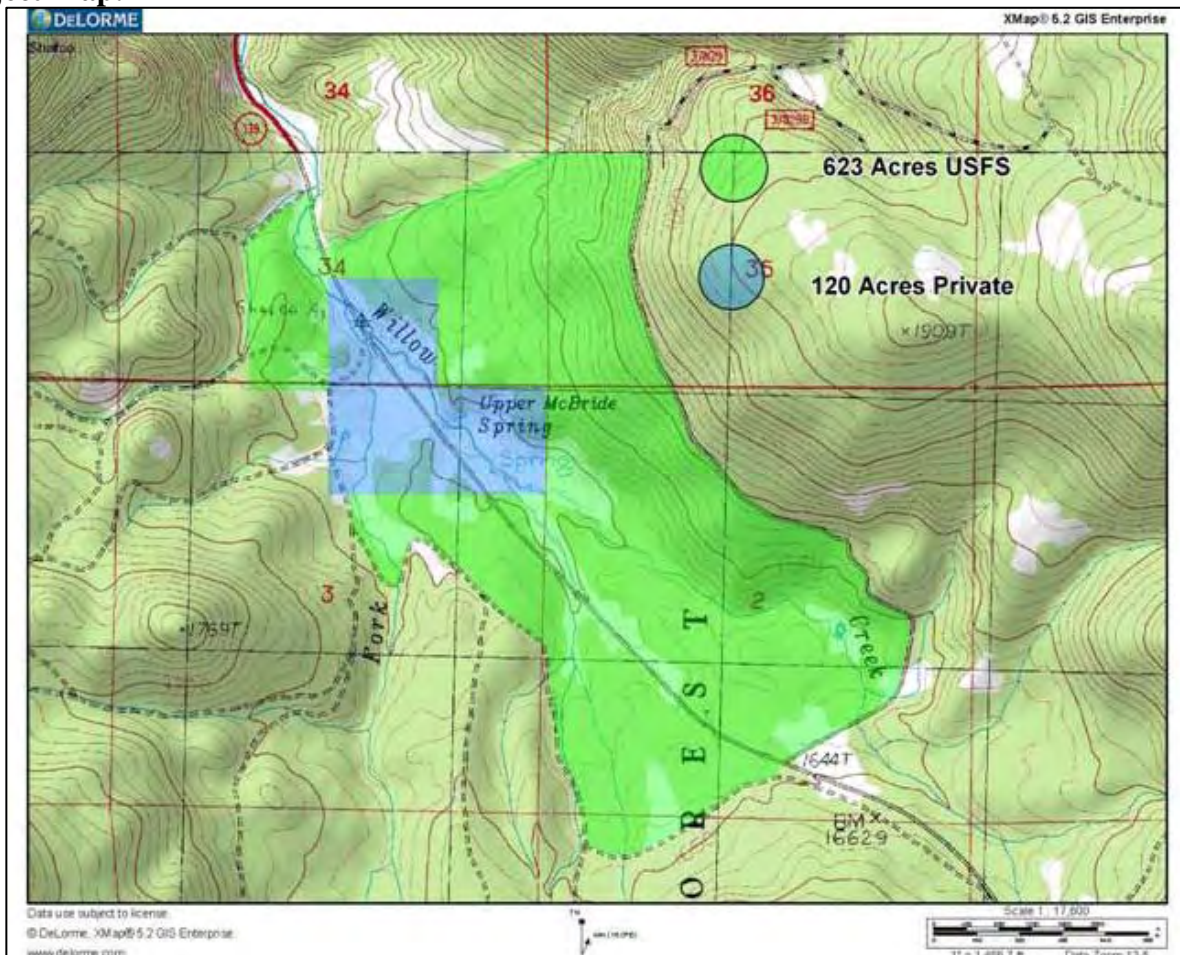
Agency: Pit RCD/LCFSC/SIR /Cooperative Sagebrush Steppe Restoration Initiative

Project: McBride Springs Watershed Restoration and Fuel Reduction Project

Project Coordinates: N40.998849 W120.98694

Summary: CSSRI, through its partners, and in cooperation with the USFS, will be making applications with various agencies to fund treatments on private and USFS lands. NEPA and CEQA clearance is underway. Planning work has been funded by SNC and CSSRI. Project restores an important watershed along the Highway 139 corridor. Work will consist of stream restoration and removal of invasive juniper through biomass utilization in an effort to reduce hazardous fuel loads and restore the watershed and wildlife habitat. Work could begin in late 2010 and be completed by 2011, subject to funding availability. Project would be implemented by the *Cooperative Sagebrush Steppe Restoration Initiative* partnership, with the Pit Resource Conservation District as the lead, and funding partners.

Project Map:



**Lassen County CWPP 2010 Work Plan
Grasshopper/South Knob/Ash Valley DFPZ**

**Partially Funded
2010 Implementation**

Agency: Lassen County Fire Safe Council, Inc., Susanville Indian Rancheria, Pit RCD/Cooperative Sagebrush Steppe Restoration Initiative and NRCS

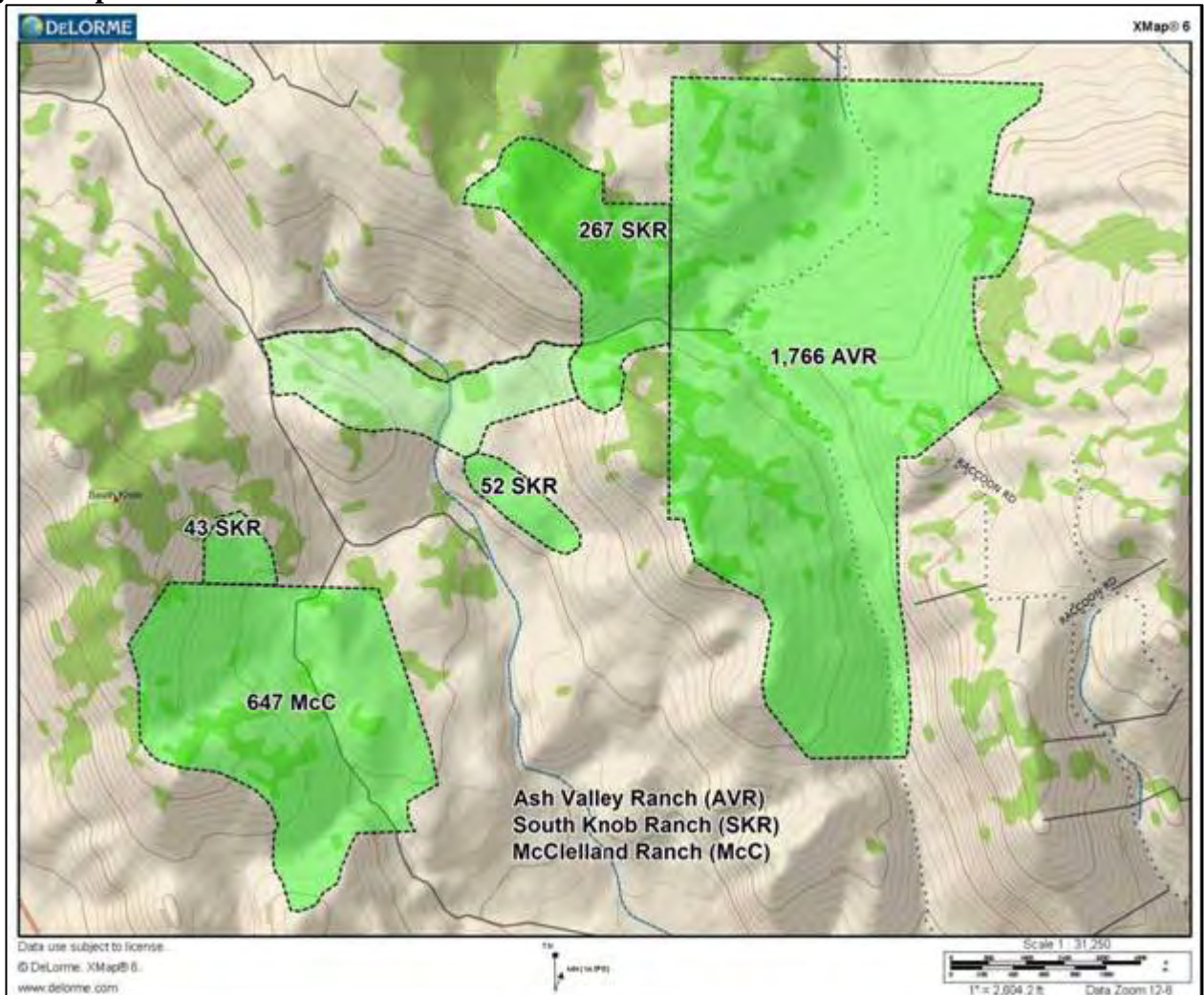
Project: South Knob Multi Ownership Landscape Fuel Reduction/Sagebrush Steppe Restoration

Project Coordinates: N40.96741 W120.71155

Summary:

CSSRI will continue assisting 3 private landowners and BLM with funding to implement landscape scale treatments adjacent to previously completed BLM and private land projects. The cooperative efforts have resulted in over 6,000 acres of contiguous fuel reduction /restoration treatments. Work began in November of 2007 and will continue through at least 2010.

Project Map:



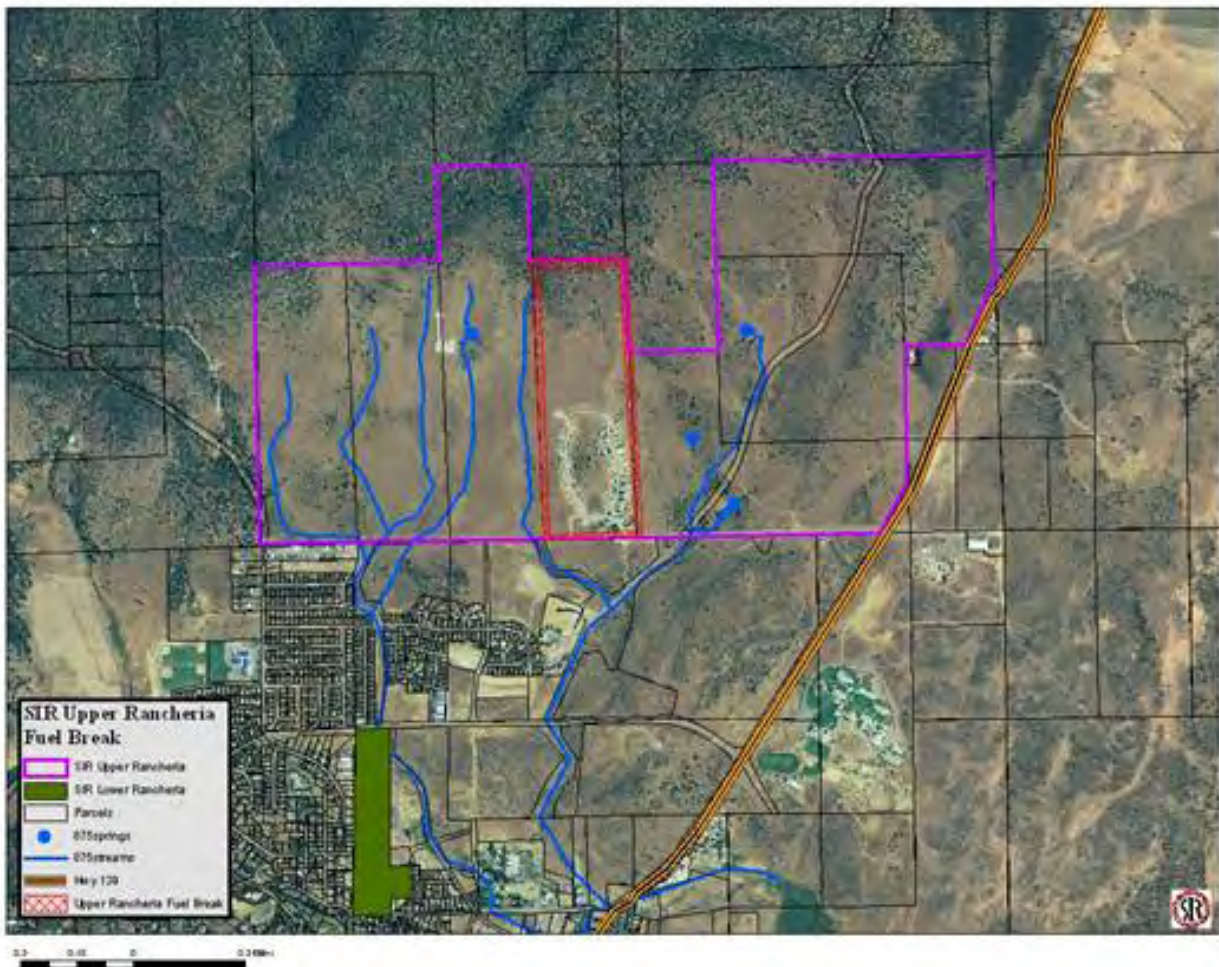
Agency: Susanville Indian Rancheria (SIR)

Project: Upper Rancheria Fuel Break

Project Coordinates: N40.446 W120.6435

Summary: SIR plans to construct a 2-mile long and one-chain (66') wide fuel break around the Upper Rancheria housing to protect 52 tribal homes. Invasive annuals, including cheat grass (*Bromus tectorum*) and medusahead (*Taeniatherum caput-medusae*) will be weed-wacked within the fuel break to less than 1/4" stubble height. Sagebrush and bitterbrush will be removed utilizing chainsaws and hand tools. Brush components will be made into hand piles 4-5' in diameter. A 2' hand line will be constructed the length of the fuel break. SIR will work with the BIA/BLM Interagency Fuels Crew out of the BLM Cedarville office to burn piles in the winter when there is adequate moisture and snow cover on the ground.

Project Map:



**Lassen County CWPP 2010 Work Plan
Susanville WUI**

**Unfunded
2010 Planning**

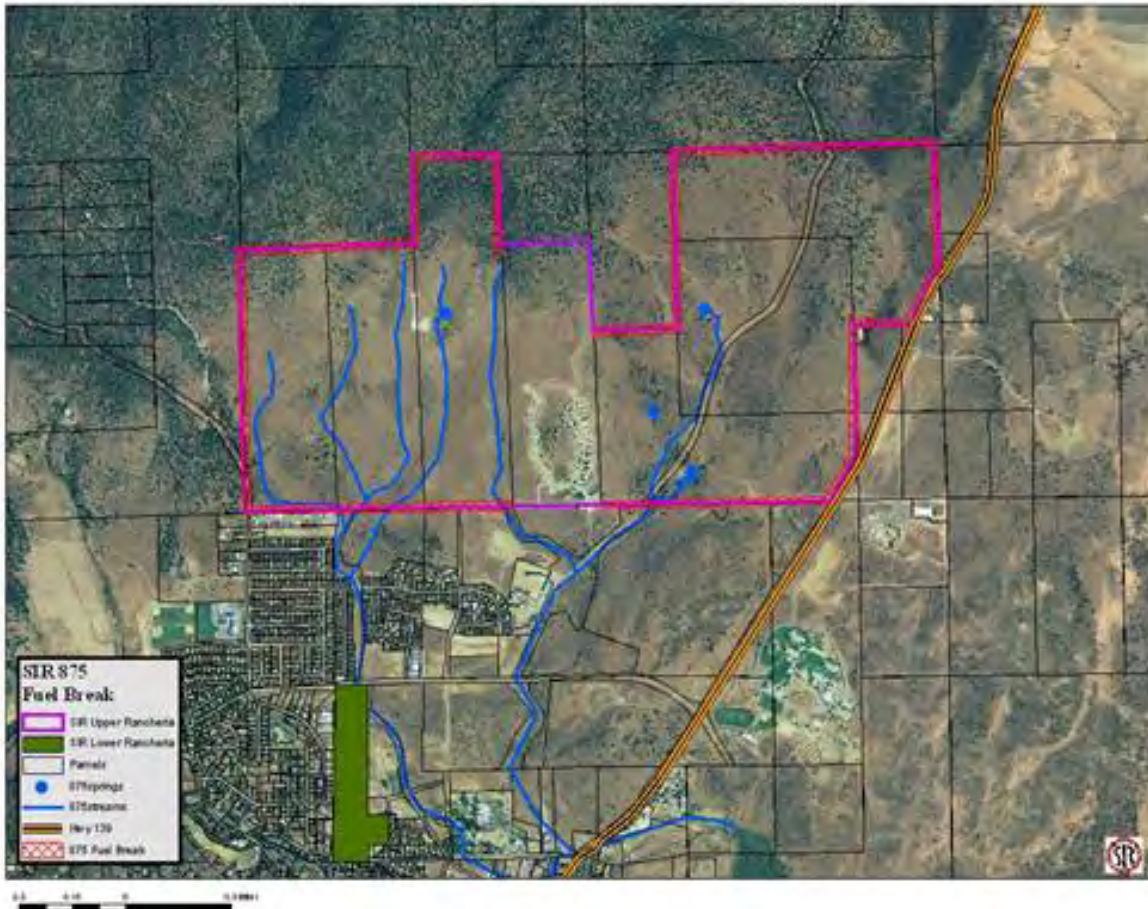
Agency: Susanville Indian Rancheria (SIR)

Project: SIR 875 Fuel Break

Project Coordinates: N40.446 W120.6435

Summary: SIR plans to construct a 6-mile long and one-chain (66') wide fuel break around the 875-acres of Tribal Trust property adjacent to the Upper Rancheria housing to protect 52 tribal homes and the Northern Wildland Urban Interface (WUI) zone for the City of Susanville, a city identified as an urban wildland interface community within the vicinity of federal lands that are at high risk from wildfire. Invasive annuals, including cheat grass (*Bromus tectorum*) and medusahead (*Taeniatherum caput-medusae*) will be weed-wacked within the fuel break to less than ¼" stubble height. Sagebrush and bitterbrush will be removed utilizing chainsaws and hand tools. Brush components will be made into hand piles 4-5' in diameter. A 2' hand line will be constructed the length of the fuel break. SIR will work with the BIA/BLM Interagency Fuels Crew out of the BLM Cedarville office to burn piles in the winter when there is adequate moisture and snow cover on the ground.

Project Map:



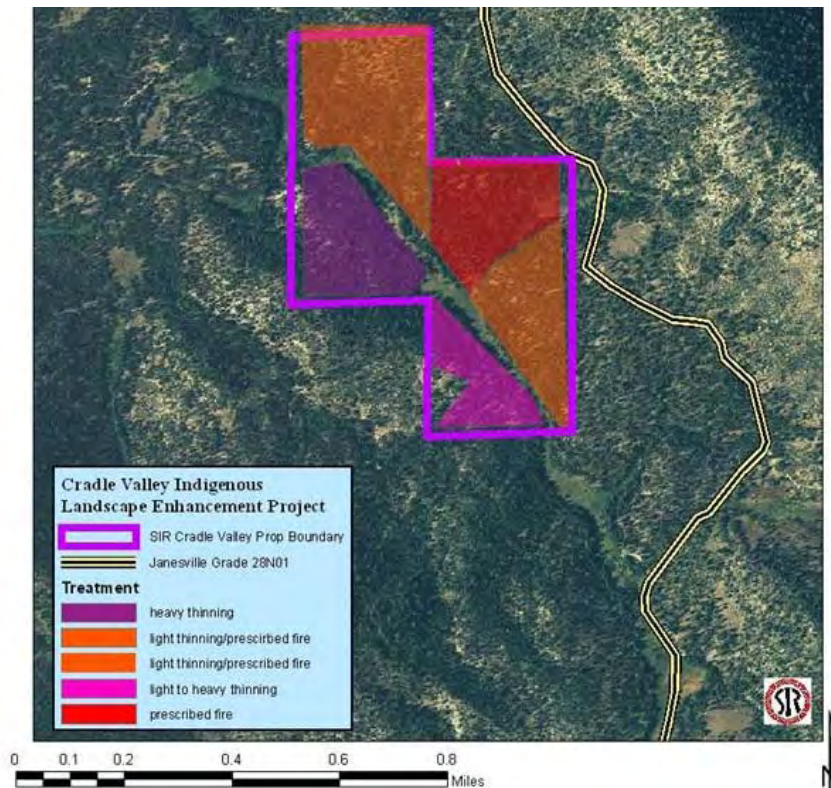
Agency: Susanville Indian Rancheria (SIR)

Project: Cradle Valley Indigenous Landscape Enhancement Project (CVILEP)

Project Coordinates: N40.2261 W120.5021

Summary: This 160 acre SIR property is located in Plumas County, but is right on the Lassen/Plumas County border. It is within the WUI for the Janesville and Milford communities. The property is completely surrounded by the Plumas National Forest (PNF). PNF lands on all sides are in need of thinning to improve forest health and reduce unnaturally high fuel loads. The Janesville Grade road which provides access to Antelope Lake from Hwy 395 is immediately adjacent to the property on the east side, providing a potential ignition source. The SIR has hand treated 80-aces of the property on the north and northeast sides of the property. The SIR plans to treat the remaining 80-acres on the west side. These portions of the property are the hardest to access, have heavy fuel accumulation, and are the most important to protect as a fire coming off the Plumas National Forest would most likely come from the southwest due to the prevailing winds. SIR will thin trees less than 8” diameter to produce a more park-like stand, prune trees 8’ from the ground, make hand piles with prunings and accumulated woody debris to 5’ diameter, and burn piles in the winter when there is snow on the ground. The long-term goal of the project is to return the habitat to pre-settlement conditions and develop a traditional cultural retreat by restoring the forest to a health tree density.

Project Map:





Bureau of Land Management Alturas Field Office Fuels Management Strategy.

Reducing the risk of catastrophic wildfire is a priority for the Alturas Field Office. We are working collaboratively with private and other public agencies to implement fuels projects that will help minimize the threat of wildfire. Life and property protection are of the utmost importance to the Alturas Field Office. Conducting fuels management projects in the WUI and beyond is allowing us to further this effort. A secondary ecological benefit achieved by these projects is the restoration of the sage steppe ecosystem by removing expansive western juniper populations. Working together with our partners, we are reducing the risk of wildfire while at the same time improving the ecological condition of our public lands.

+++++

Lassen County CWPP 2010 Work Plan

WUI: Madeline

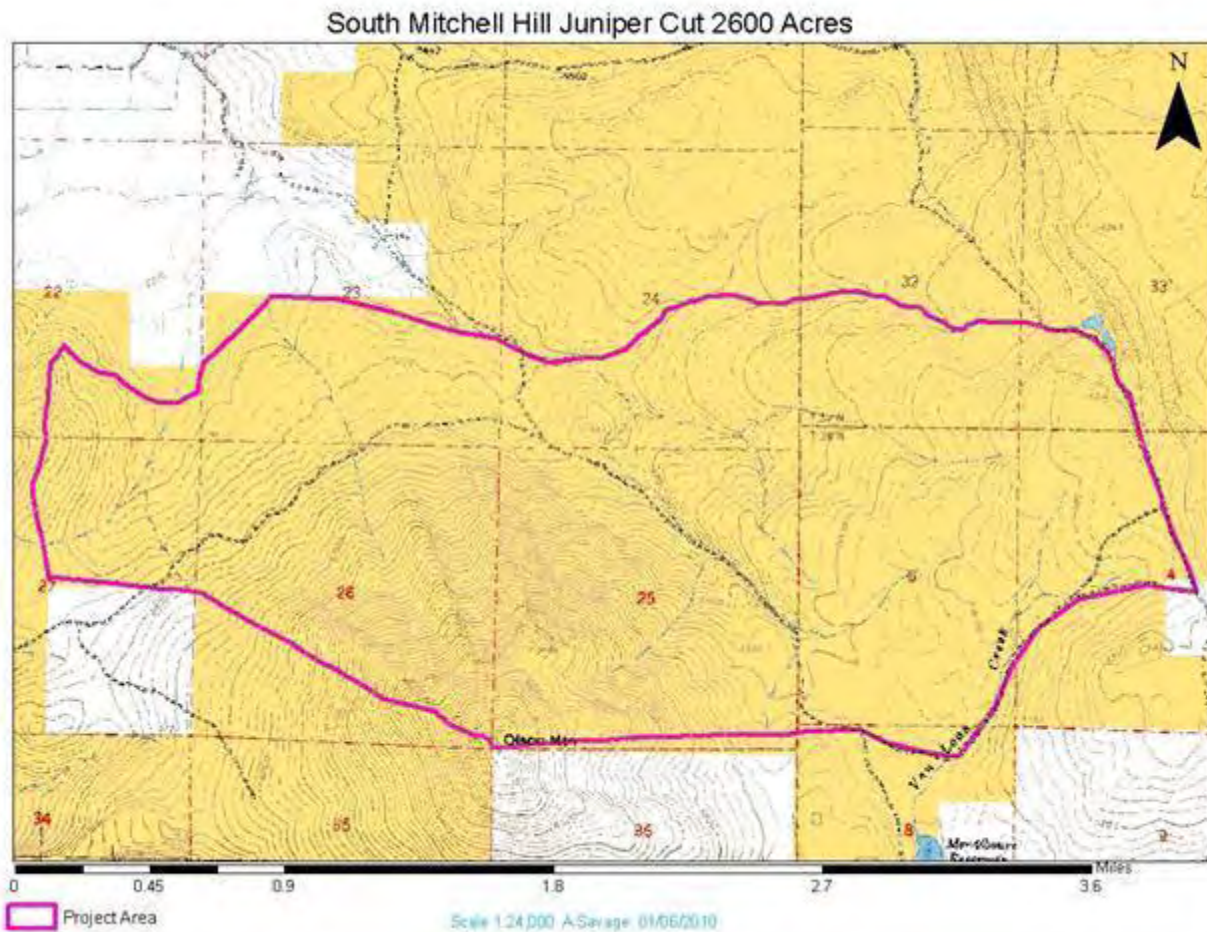
Agency: Alturas BLM

Project: South Mitchell Hill Juniper Cut, ARRA project. **Status:** Planning Phase, NEPA in progress, Contract to be let by June 2010.

Project Coordinates: N 41.0171 W 120.426

Summary: Western Juniper has encroached over a vast area in Northeast California. This encroachment has contributed to degraded watersheds, degraded wildlife habitat, reduction of livestock forage, and reduction of bio-diversity and increased the hazard of catastrophic wildfire. By reducing areas of Western Juniper stands by mechanical treatments, the current ecological trend can be slowed or stopped, allowing recovery of degraded natural resources. The project area is 2600 acres.

Project Map:



**Lassen County CWPP 2010 Work Plan
WUI: Bieber**

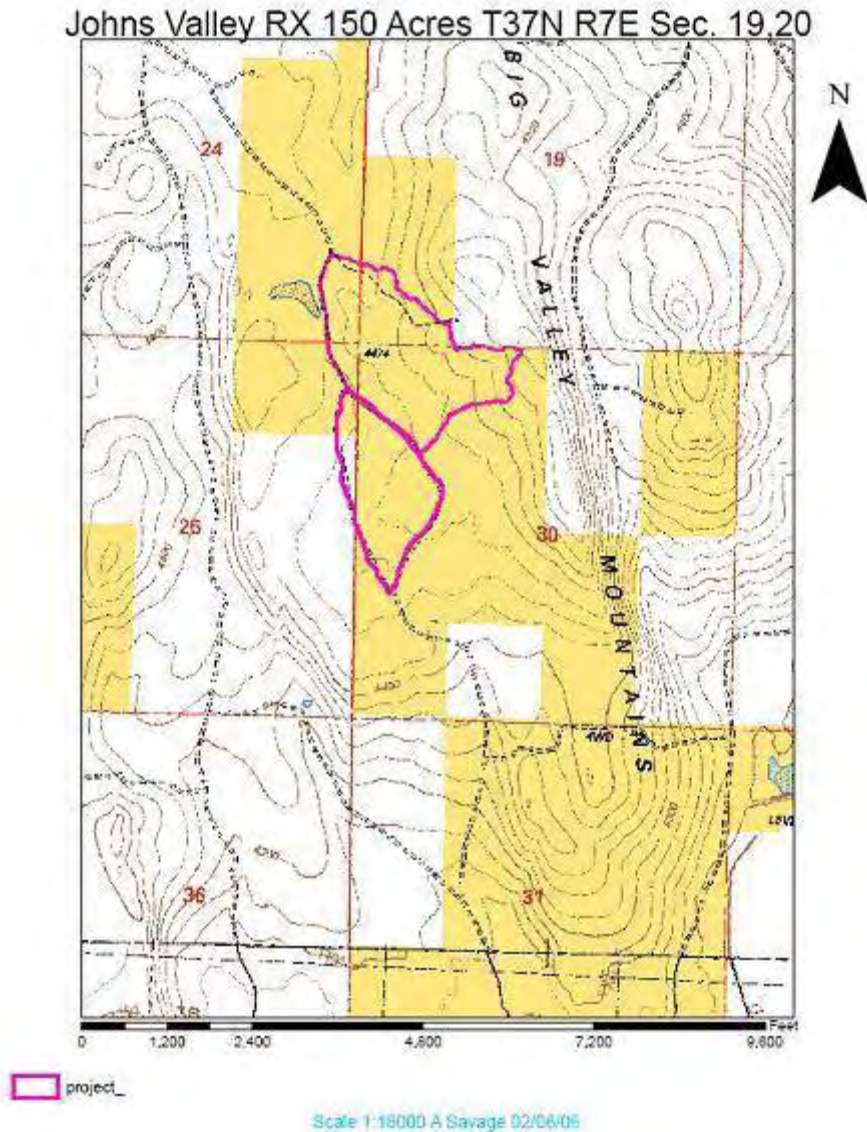
Agency: Alturas BLM

Project: Johns Valley Prescribed Fire Status: Unfunded, Burn plan rewritten

Project Coordinates: N 41.0213 W 121.2172

Summary: The proposed action of a 150 acre underburn is needed to reduce fire hazards by: (a) reducing dead fuels and decadent brush within timber stands, (b) cycling nutrients, reducing stock rates and improving forest health, (c) stimulating new growth of brush, oak, grasses, and forbs, (d) reducing the potential of highly damaging crown fires, (e) making existing roadways defensible to fight fires from and improving safe access for fire fighting equipment.

Project Map:



Lassen County CWPP 2010 Work Plan

WUI: Likely

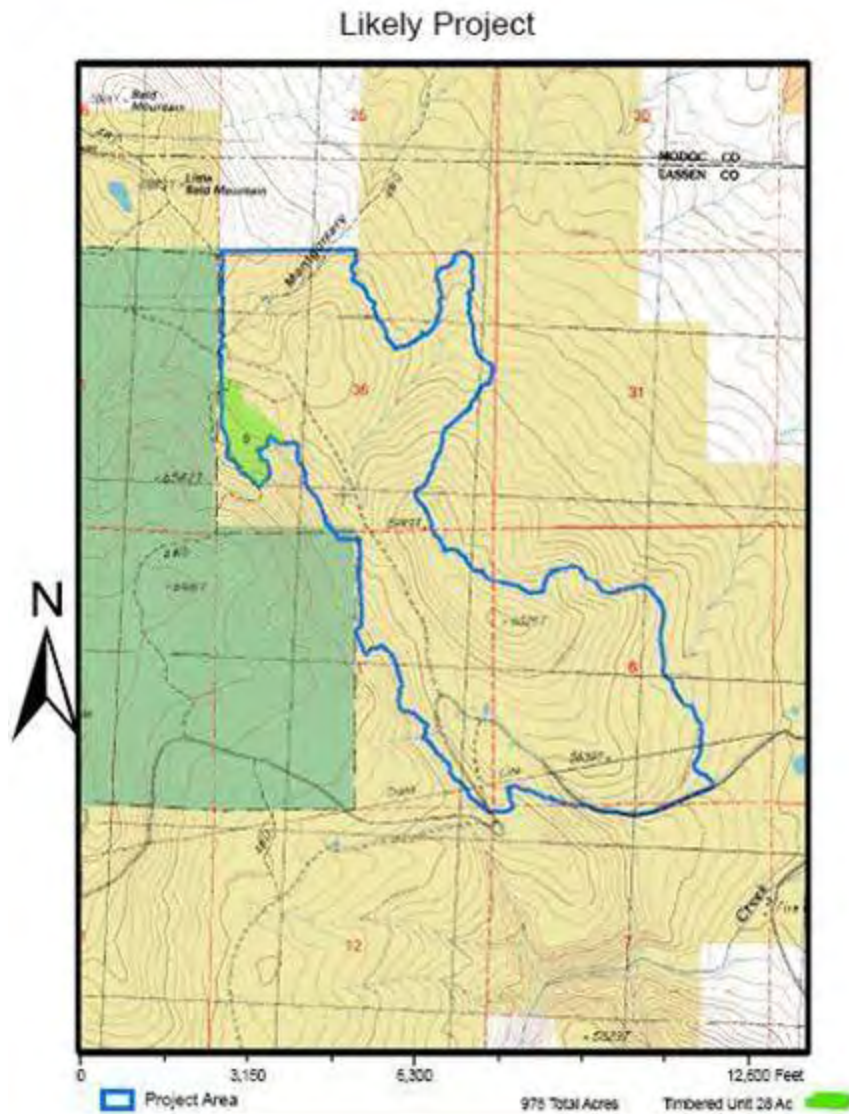
Agency: Alturas BLM

Project: Likely Stewardship Contract, **Status:** Project completed December 2009

Project Coordinates: N 41 1682 W 120 5465

Summary: The proposed action is designed to reduce the existing fire hazard and enhance the rangeland health through removal of non old growth juniper on 1000 acres. The pine component will be enhanced by pre-commercially thinning areas with advanced conifer regeneration, and commercially thinning intermediate, co-dominant and dominate trees that are showing signs of stress or overcrowding. Within the proposed treatment area white fir will be removed when in the vicinity of pine to allow for pine regeneration.

Project Map:



Lassen County CWPP 2010 Work Plan

WUI: Ash Valley

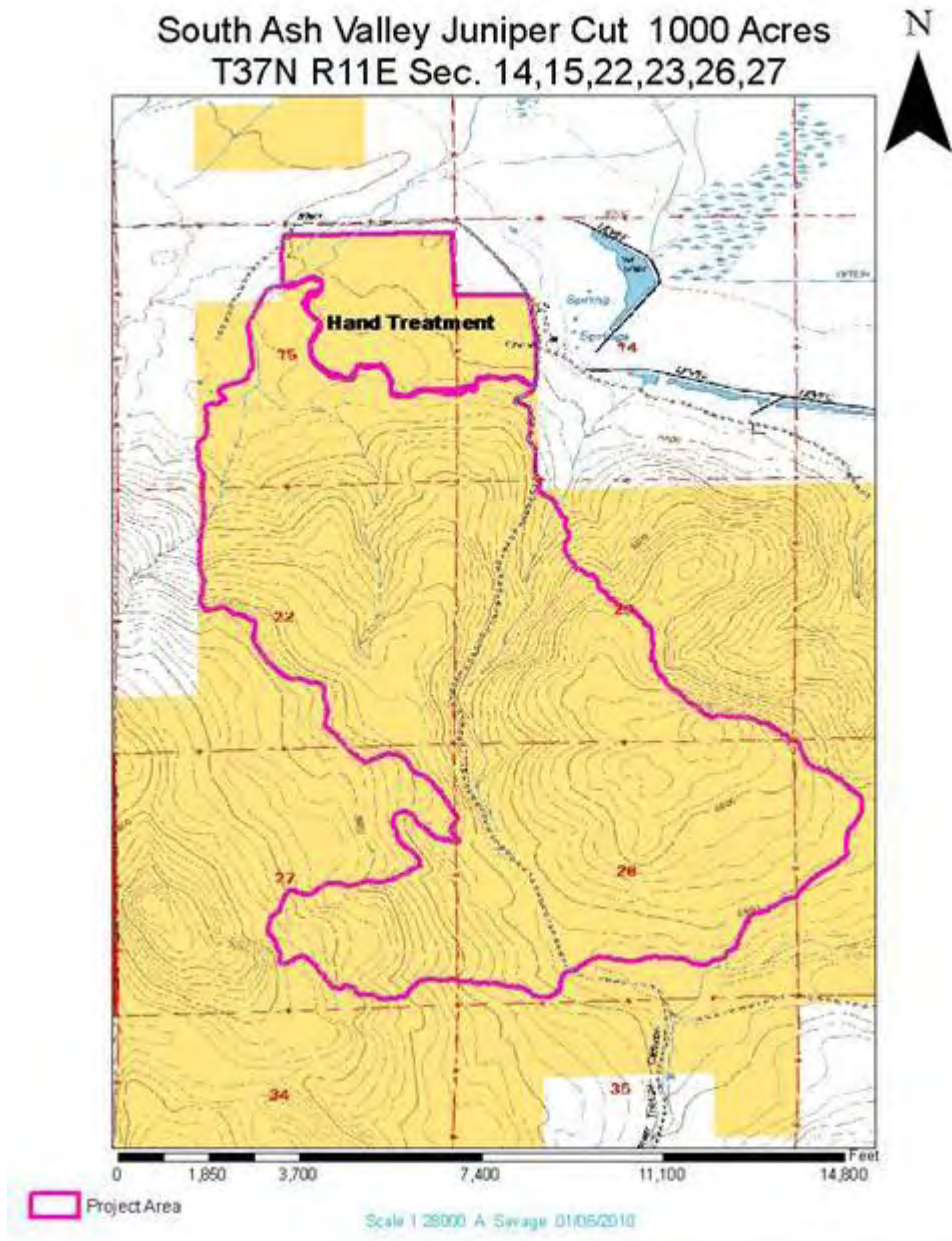
Agency: Alturas BLM

Project: Ash Valley Juniper Reduction Project, **Status:** Contractor started shearing operations.

Project Coordinates: N 41.0304 W 120.6831

Summary: Juniper density in the area is leading to a loss of understory and ecosystem diversity. The Lassen Fire Safe Council has approached BLM to treat the area to coincide with private and Forest Service treatments in the vicinity. BLM has let the contract on the 750 acre mechanical shearing and biomass. A 200 acre hand treatment of juniper was completed in 2008.

Project Map



Lassen County CWPP 2010 Work Plan

WUI: Ash Valley

Agency: Alturas BLM

Project: Knox Mtn. Timber Sale, ARRA project. **Status:** Project is laid out & marked.

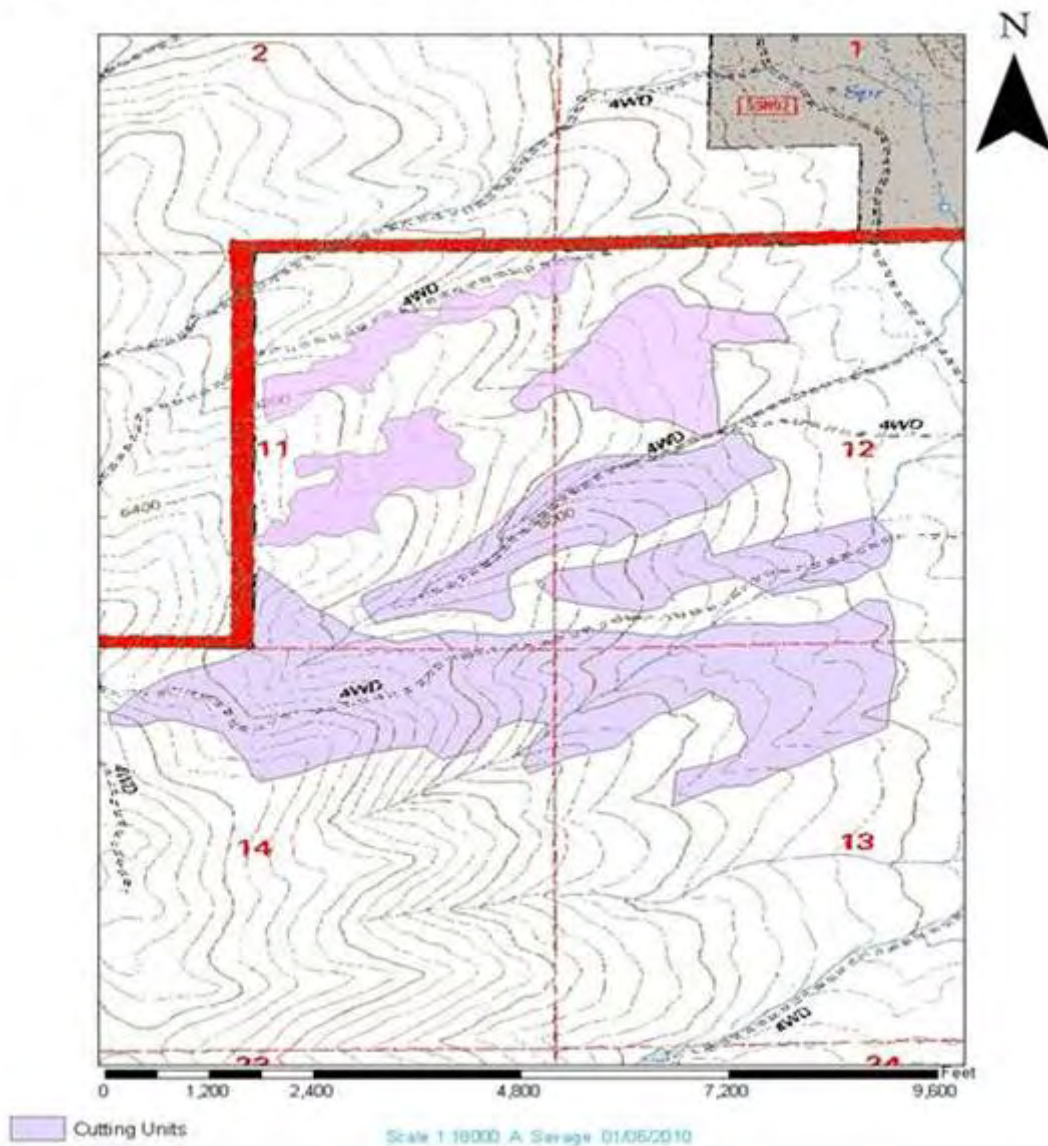
Contract should be let in June 2010

Project Coordinates: N 41.1422 W 120.6688

Summary: The proposed action is designed to reduce the existing fire hazard. The project area is 405 acres and cruised at 950,000 board feet. The pine component will be enhanced by pre-commercially thinning areas with advanced conifer regeneration, and commercially thinning intermediate, co-dominant and dominate trees that are showing signs of stress or overcrowding. Within the proposed treatment area white fir will be removed when in the vicinity of pine to allow for pine regeneration.

Project Map:

Knox MTN. Timber Sale 405 Acres, T38N R11E Sec. 11,12,13,14



Lassen County CWPP 2010 Work Plan

WUI: Madeline

Agency: Alturas BLM

Project: Mitchell Hill Juniper Cut **Status:** 300 acres completed, Work continues, designated free firewood area

Project Coordinates: N 41.0342 W 120.4243

Summary: Western Juniper has encroached over a vast area in Northeast California. This encroachment has contributed to degraded watersheds, degraded wildlife habitat, reduction of livestock forage, and reduction of bio-diversity and increased the hazard of catastrophic wildfire. By reducing areas of Western Juniper stands by mechanical and hand treatments, the current ecological trend can be slowed or stopped, allowing recovery of degraded natural resources. The project area is 1000 acres.

Project Map:

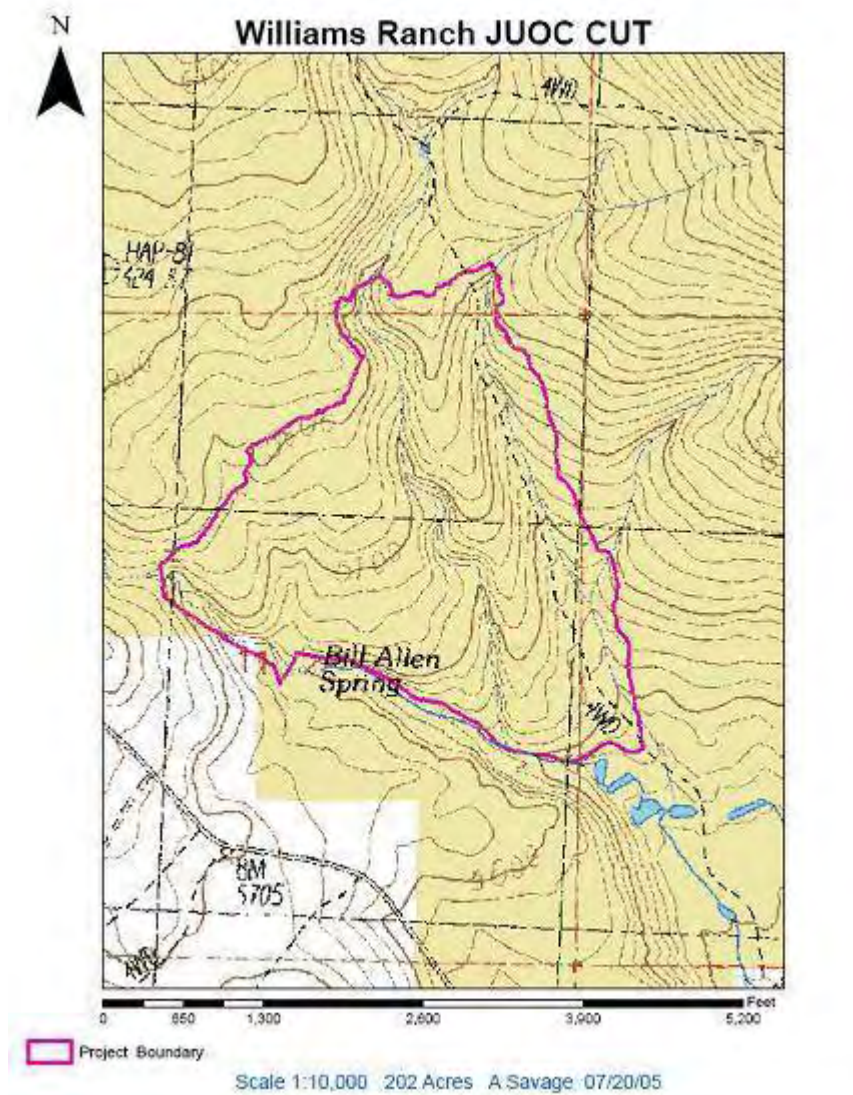


Lassen County CWPP 2010 Work Plan
WUI: Madeline
Agency: Alturas BLM

Project: Williams Ranch Restoration **Status:** 200 acres completed. Ongoing cutting and pile burning by handcrews
Firewood is transported to BLM site and donated to charity
Project Coordinates: N 41.0590 W 120.5540

Summary: Western Juniper has encroached over a vast area in Northeast California. This encroachment has contributed to loss of native vegetation in the understory, which is creating soil from overland movement of water. The native aspen and mahogany species in the area are being crowded out by the juniper. Juniper density is high, in which there is now a risk of catastrophic wildfire. Juniper reduction work would be done by hand and chainsaws. The material would be piled and burned on site. The project area is 500 acres with 200 acres as the first treatment.

Project Map:



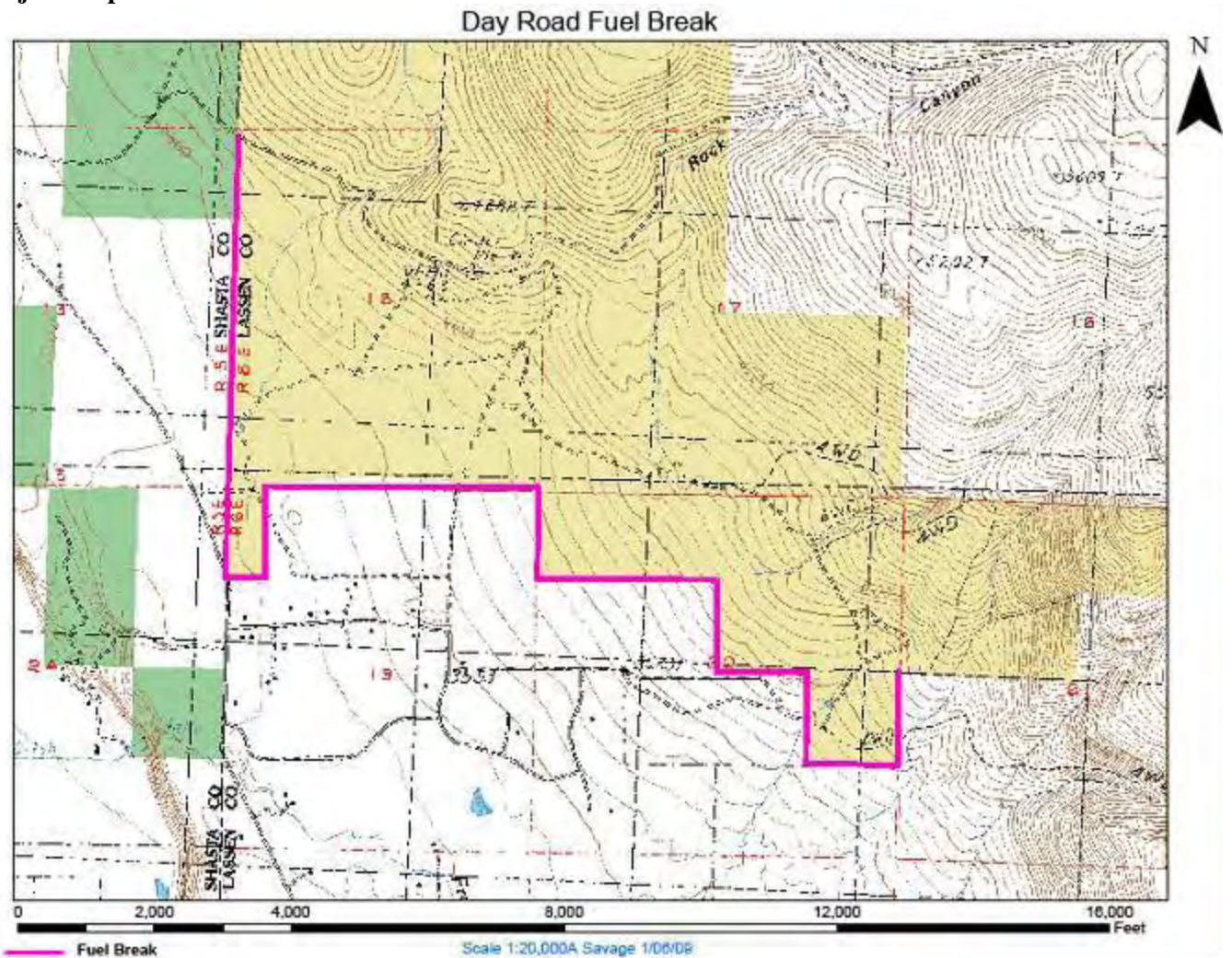
Lassen County CWPP 2010 Work Plan
WUI: Lassen Day Bench
Agency: Alturas BLM

Project: Day Road Shaded Fuel Break and Pile Burn, **Status:** Maintenance Phase

Project Coordinates: N 41.1245 W 121.1245

Summary: The Day Road shaded Fuel Break was created in 2001-2002 to provide a fuel break between BLM and private land in NW Lassen County. It was constructed with BLM handcrews and the slash was piled and burned. It is now in the maintenance phase and this is the second maintenance entry on the project. The maintenance is done by Intermountain Conservation Camp Inmate crews.

Project Map:



Lassen County CWPP 2010 Work Plan

WUI: Madeline

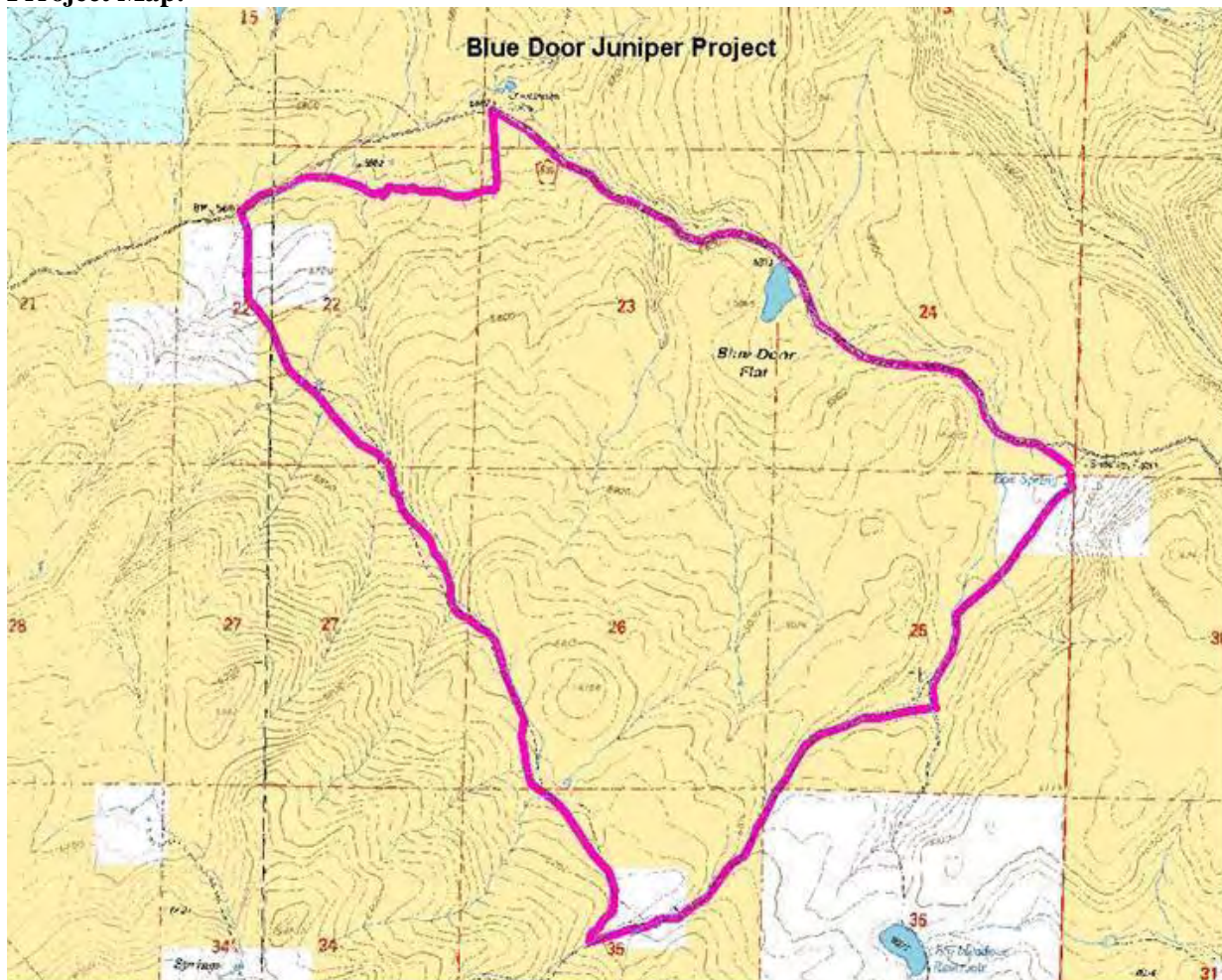
Agency: Alturas BLM

Project: Blue Door Juniper Cut, ARRA project. **Status:** Planning Phase, NEPA in progress, Contract to be let by June 2010.

Project Coordinates: N 41.0604 W 120.3457

Summary: Western Juniper has encroached over a vast area in Northeast California. This encroachment has contributed to degraded watersheds, degraded wildlife habitat, reduction of livestock forage, and reduction of bio-diversity and increased the hazard of catastrophic wildfire. By reducing areas of Western Juniper stands by mechanical and hand treatments, the current ecological trend can be slowed or stopped, allowing recovery of degraded natural resources. The project area is 2100 acres.

Project Map:



Lassen County CWPP 2010 Work Plan

WUI: Madeline

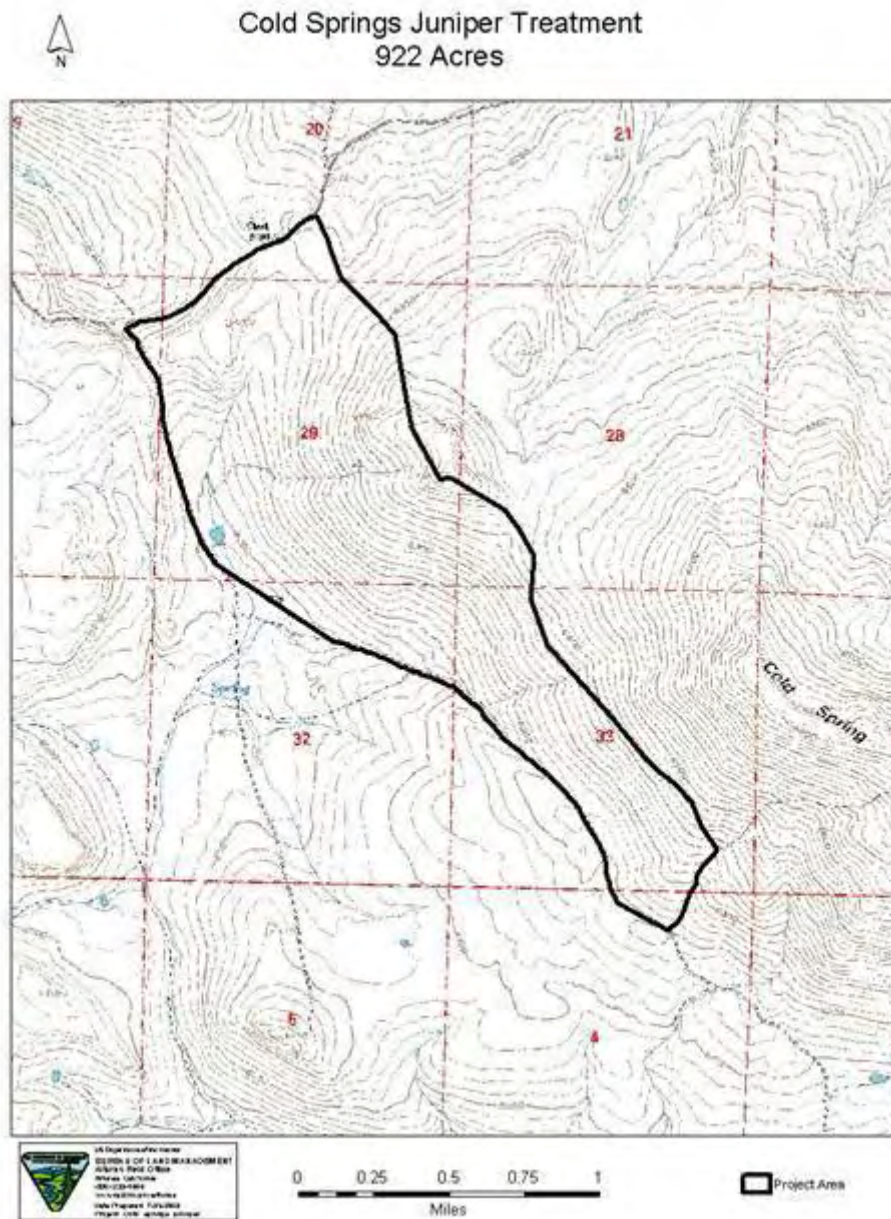
Agency: Alturas BLM

Project: Cold Springs hand treatment **Status:** Contract let, work will begin as weather permits.

Project Coordinates: N 41.0360 W 120.3005

Summary: Western Juniper has encroached over a vast area in Northeast California. This encroachment has contributed to degraded watersheds, degraded wildlife habitat, reduction of livestock forage, and reduction of bio-diversity and increased the hazard of catastrophic wildfire. By reducing areas of Western Juniper stands by mechanical and hand treatments, the current ecological trend can be slowed or stopped, allowing recovery of degraded natural resources. The project area is 900 acres.

Project Map:



Lassen County CWPP 2010 Work Plan

WUI: Likely

Agency: Alturas BLM

Project: Stipa/Harter Prescribed Fire Status: Planning phase

Project Coordinates: N 41.0991 W 120.5447

Summary: Western Juniper has encroached over a vast area in Northeast California. This encroachment has contributed to degraded watersheds, degraded wildlife habitat, reduction of livestock forage, and reduction of bio-diversity and increased the hazard of catastrophic wildfire. By reducing areas of Western Juniper stands by reintroducing fire into the ecosystem, the current ecological trend can be slowed or stopped, allowing recovery of degraded natural resources. The project area is 2000 acres.

Project Map:

Stipa Harter RX T38N R12E Sec, 25,26,35,36



Lassen County CWPP 2010 Work Plan

WUI: Ash Valley

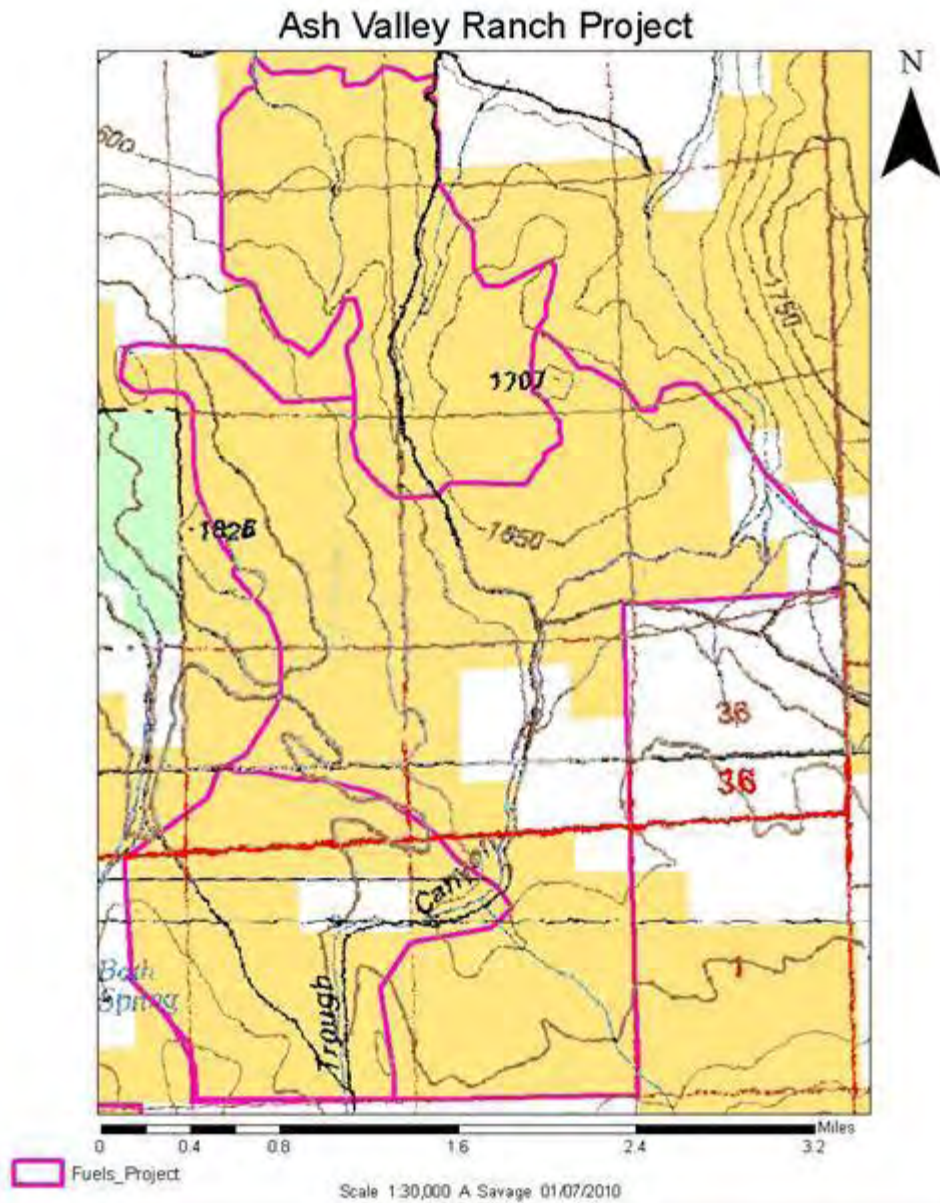
Agency: Alturas BLM

Project: Ash Valley Ranch Juniper Reduction Project, Status: Planning Phase.

Project Coordinates: N 40.9994 W 120.6834

Summary: Juniper density in the area is leading to a loss of understory and ecosystem diversity. The Lassen Fire Safe Council has approached BLM to treat the area to coincide with private and Forest Service treatments in the vicinity. BLM is currently writing NEPA for a right of way for private work in the area. The project area is 5000 acres of private and public lands.

Project Map



Lassen County Community Wildfire Protection Plan
BLM Eagle Lake Field Office
2010 Annual Work Plan Summary Narrative

The Eagle Lake Field Office currently has Hazardous Fuels Reduction, Ecosystem Restoration, projects planned or ongoing in Lassen County. The purpose and benefits of these projects are community and resource protection, wildlife habitat improvement, rangeland improvement and ecosystem restoration.

The **Stones-Bengard** Hazardous Fuels Reduction Project's main objective is to reduce the risk of catastrophic wildfire to the communities of Stones-Bengard and Bucks Bay along the shores of Eagle Lake where Juniper encroachment has substantially increased the hazardous fuel loading in the area. This project is also expected to have the added benefit of considerable improvement to rangeland in the area.

The **North Eagle** and **South Cleghorn** Hazardous Fuels Reduction Projects are an extension of the Stones-Bengard project with the same objective to reduce the risk of catastrophic wildfire that could threaten valuable timber resources, and Bald Eagle habitat as well as the community of Stones-Bengard. The planned treatments of these projects have also been identified in the Cleghorn Habitat Management Plan (a plan for the protection and management of a Bald Eagle nesting territory on public land.) Benefits will include community and resource protection, rangeland and bald eagle habitat improvement.

The **North Horse** and **South Grasshopper** Hazardous Fuels Reduction Projects are in areas that have been identified as Fire Regime III in a condition class of 2 and 3. Our goal is to reduce high densities of western juniper and reintroduce fire into the ecosystem. This will reduce the risk of catastrophic wildfire and restore the project areas to a more healthy and productive plant community and in the future return the Fire Regime to a condition class of 1.

The **Dodge Reservoir** Hazardous Fuels Reduction and Habitat Improvement Project's goal is to reduce high densities of western juniper in order to improve sage grouse habitat, watershed health, reduce the threat of catastrophic wildfires and to restore the project area to a more healthy and productive plant community.

The **Heavey Mtn.** Stewardship projects goal is to conduct pre-commercial thinning using mechanical treatments to reduce high densities of Ponderosa Pine. The main objective is to reduce competition and improve overall stand health of commercial forest. Added benefits are a reduction of the threat of catastrophic wildfires by removing excess fuels and to restore the project area to a more healthy and productive forest ecosystem.

The **Jacks Valley** Stewardship projects goal is to conduct pre-commercial thinning using mechanical treatments to reduce high densities of Ponderosa Pine. The main objective is to reduce competition and improve overall stand health of commercial forest. Added benefits are community protection by the reduction of the threat of catastrophic wildfires by removing excess fuels and to restore the project area to a more healthy and productive forest ecosystem.

Lassen County CWPP 2010 Work Plan

Eagle Lake/Stones Landing (WUI)

Agency: BLM, Eagle Lake Field Office

Project: Stones-Bengard (Hazardous Fuels Reduction)

Project Coordinates: N40.7117 W120.7321

Summary:

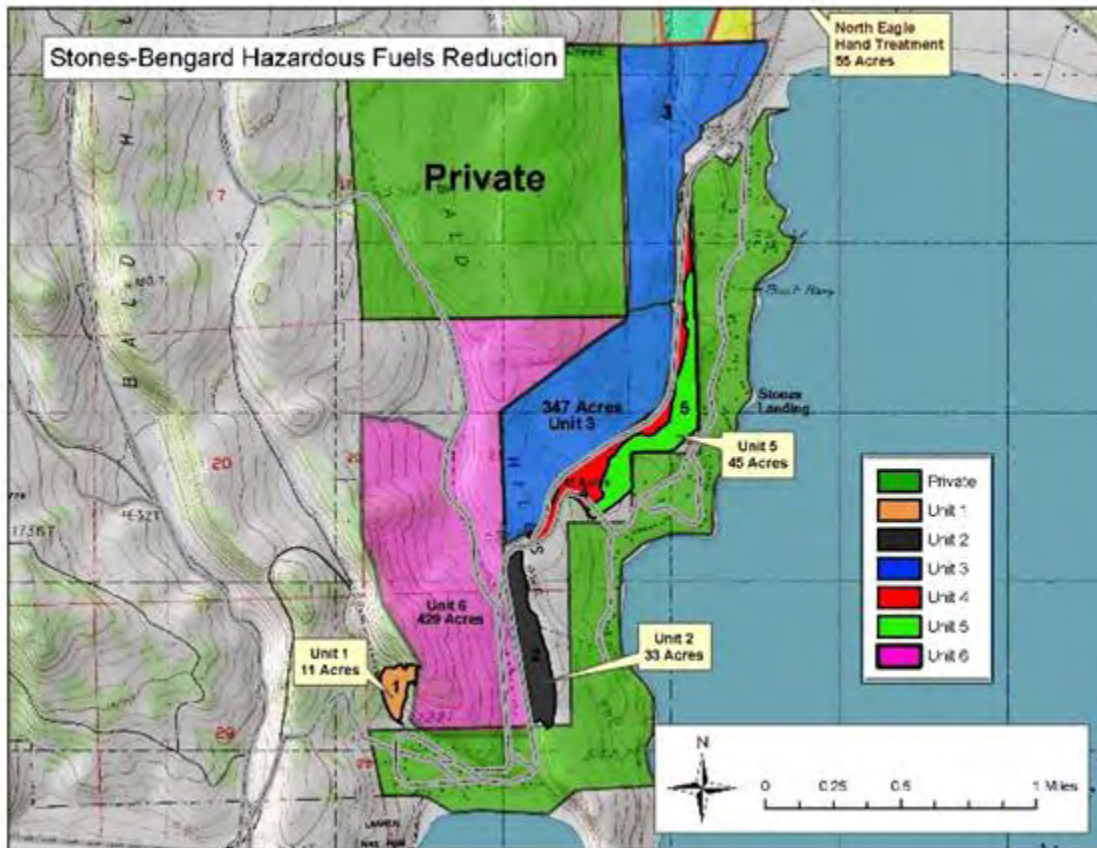
Proposed Action (completed mechanical)

Using Stewardship Contracting Authority, the BLM Eagle Lake Field Office completed thinning approximately 776 acres using a variety of mechanical means to reduce wildland fuels (units 3 and 6 below). The main objective is to reduce the risk of catastrophic wildfire to the community of Stones-Bengard. Most of the material was chipped and removed to be utilized as biomass for electricity production in local Co-Generation Plants. Some saw logs were also utilized. The two target species for removal will be up to 90% of the western juniper and 40-50% of the Ponderosa pine.

Additional hand pile construction and burning have been completed in units 1, 2 and 4 for 85 acres.

Hand thinning and pile construction began in 2009 on 45 acres in unit 5 and is scheduled for completion in 2010 which will complete the Stones-Bengard project. Maintenance will be conducted as needed.

Project Map:



Lassen County CWPP 2010 Work Plan

Eagle Lake/Stones Landing (WUI)

Agency: BLM, Eagle Lake Field Office

Project: South Cleghorn Stewardship (Hazardous Fuels Reduction)

Project Coordinates: 40.75214 N 120.75071 W

Summary:

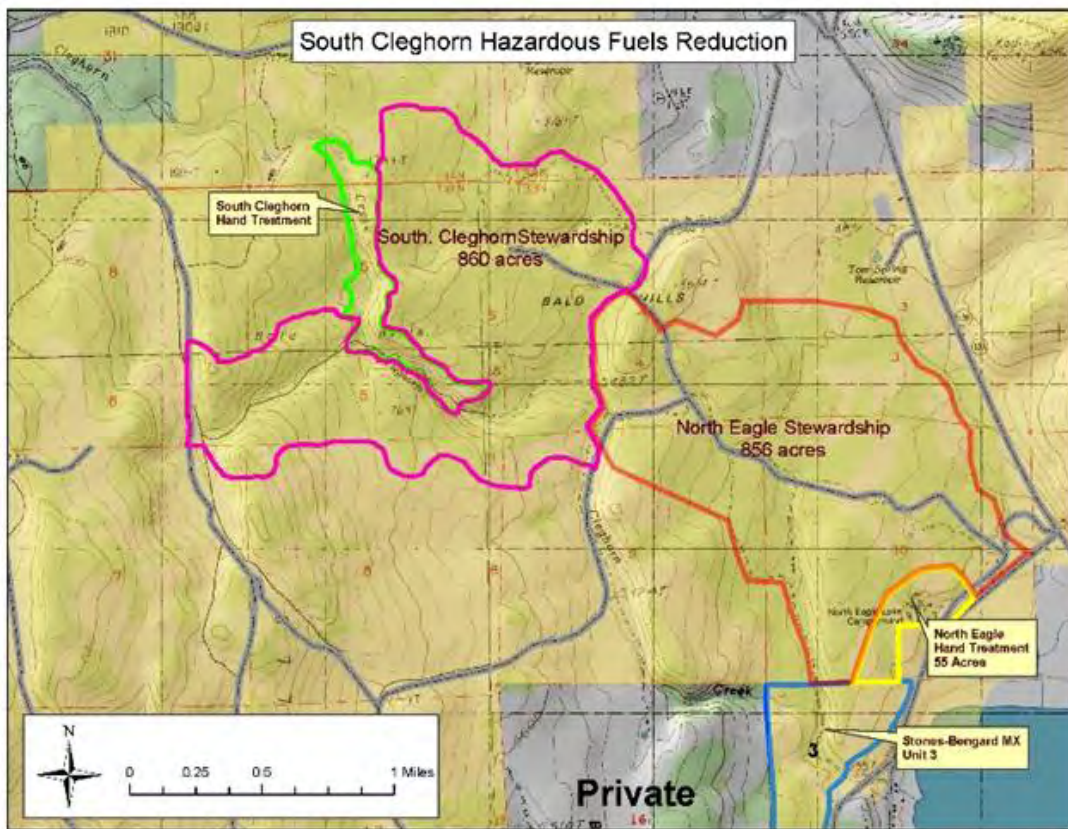
Proposed Action

Using Stewardship Contracting Authority, 860 acres were treated 2008-2009 using a variety of mechanical means to reduce wildland fuels. The main objective is to reduce the risk of catastrophic wildfire to the community of Stones-Bengard. Most of the material was chipped and removed to be utilized as biomass for electricity production in local Co-Generation Plants. Some saw logs were also utilized. The two target species for removal will be up to 90% of the western juniper and 40-50% of the Ponderosa pine.

A small hand treatment area of 88 acres is also identified along Cleghorn Creek to protect the stream bed from mechanical operations. Treatment began in 2009 by crews using chainsaws to reduce the current density of juniper and pine. The piles generated will be burned during the winter months.

Some Broadcast Underburning is in the planning phase for 2010-2012 for this project area.

Project Map:



Lassen County CWPP 2010 Work Plan

North Horse Mtn. /Horse Lake (non WUI)

Agency: BLM, Eagle Lake Field Office

Project: North Horse Stewardship Fuels Reduction Project

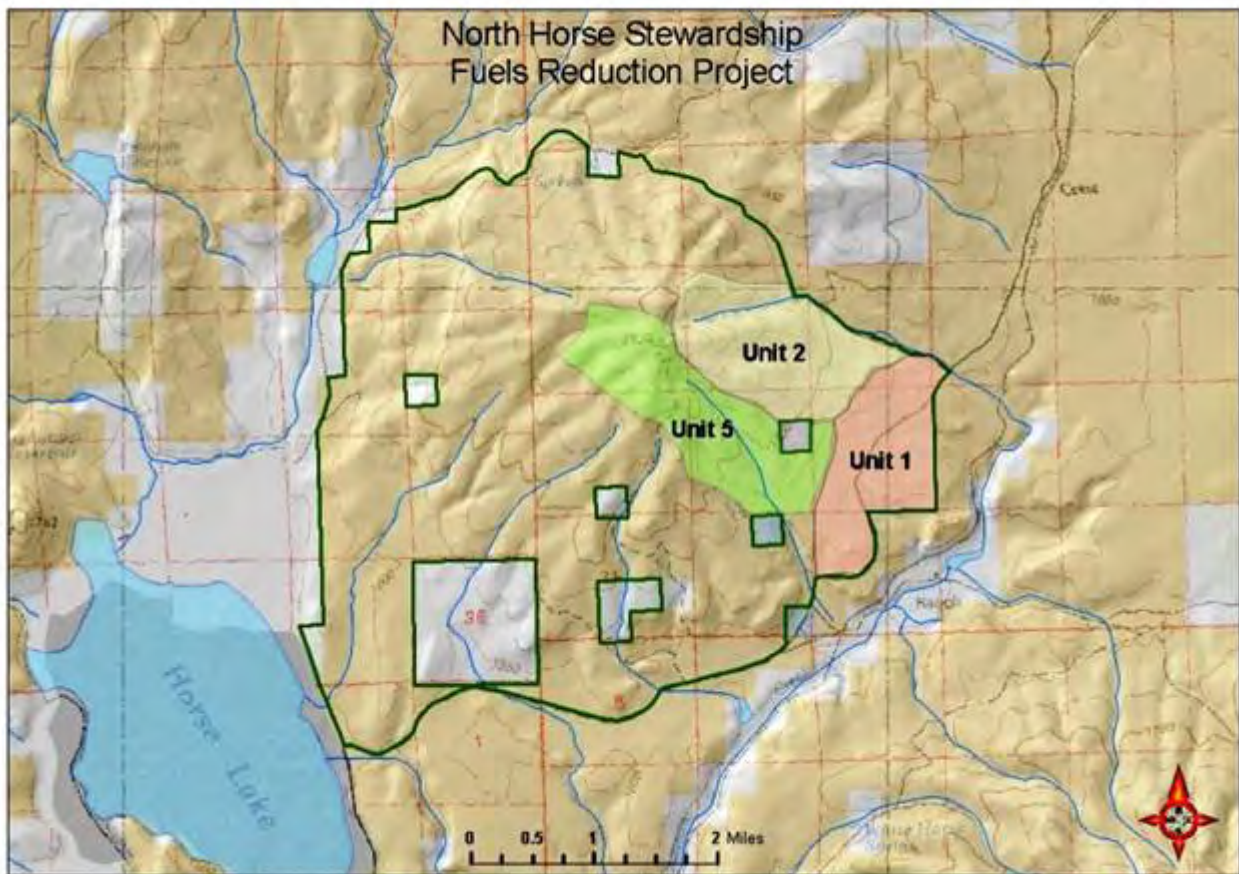
Project Coordinates: N40.69296 W120.42868

Summary:

Proposed Action (currently underway)

The North Horse Mt. Stewardship contract for unit 1 was awarded and work has begun as of the spring of 2008. The remainder of the project has been awarded and work began in units 2 and 5 in the spring of 2009 and are scheduled for completion in 2010. The proposed action is to use a combination of mechanical and prescribed fire treatments over a ten year treatment schedule to reduce high densities of western juniper reducing the risk of catastrophic fire and restoring the project area to a more healthy and productive plant community. Total project area is approximately 10,000 acres. Most of the material will be chipped and removed to be utilized as biomass for electricity production in local Co-Generation Plants.

Project Map:



Lassen County CWPP 2010 Work Plan

Eagle Lake/Stones Landing (WUI)

Agency: BLM, Eagle Lake Field Office

Project: South Grasshopper Stewardship (Hazardous Fuels Reduction)

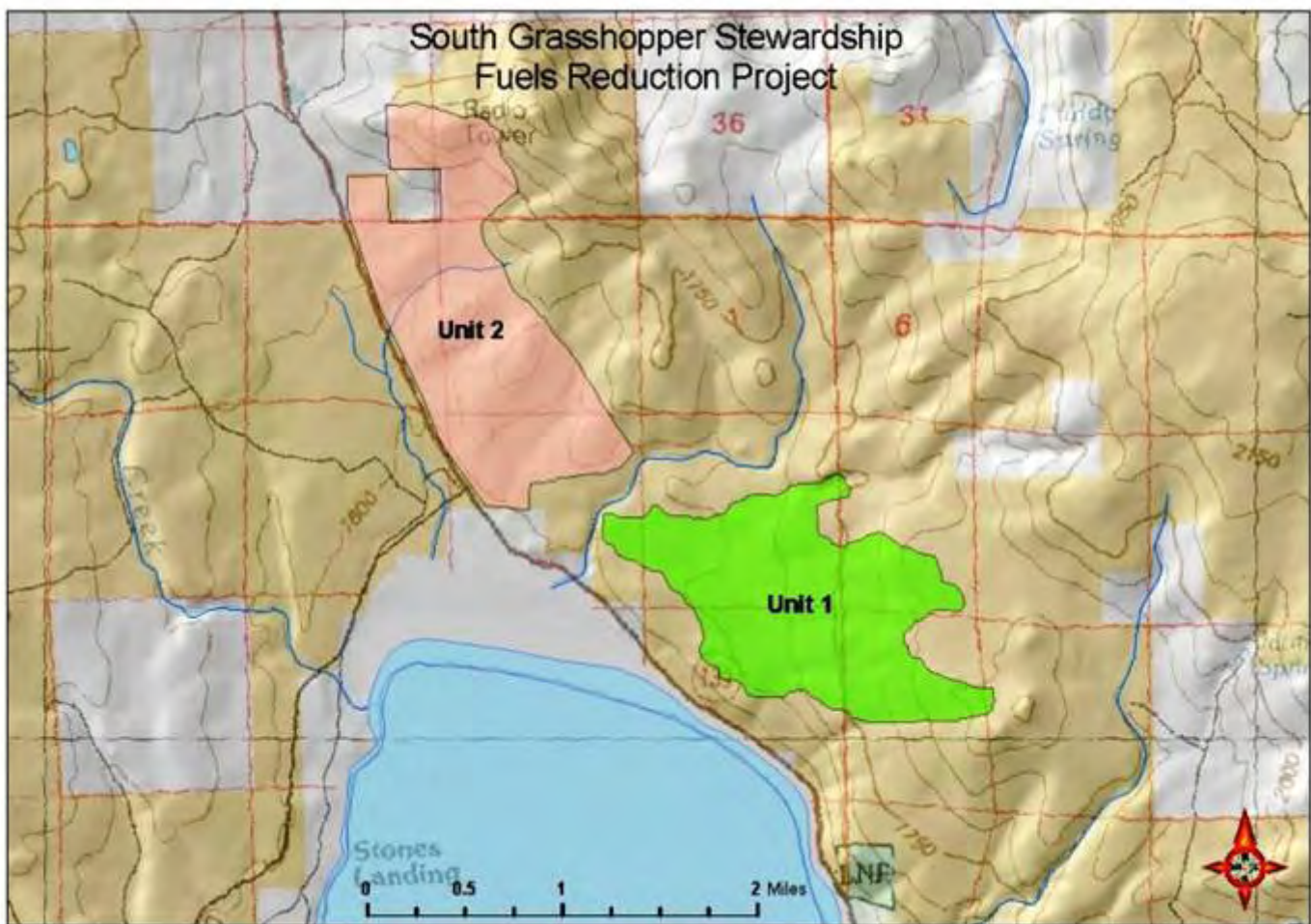
Project Coordinates: 40.7298 N 120.67704 W

Summary:

Proposed Action (planning phase)

Using Stewardship Contracting Authority, thin 1815 acres using a combination of mechanical and prescribed fire treatments to reduce high densities of western juniper. The main objective is to reduce the threat of catastrophic wildfires and restore the project area to a more healthy and productive plant community. Most of the material will be chipped and removed to be utilized as biomass for electricity production in local Co-Generation Plants. This project is being funded by ARRA (American Recovery and Reinvestment Act) and is planned to go out for solicitation in the spring of 2010 and work begun on 953 acres of unit 2 in the summer of 2010.

Project Map:



Lassen County CWPP 2010 Work Plan

Dodge Reservoir (non WUI)

Agency: BLM, Eagle Lake Field Office

Project: Dodge Reservoir (Hazardous Fuels Reduction & Habitat Restoration)

Project Coordinates: 40.9624 N 120.1185 W

Summary:

Proposed Action (planning phase)

Using Stewardship Contracting Authority, thin approximately 1500 acres over three years 2011-2013 using mechanical and hand treatments to reduce high densities of western juniper. The main objective is to improve sage grouse habitat, watershed health, reduce the threat of catastrophic wildfires and to restore the project area to a more healthy and productive plant community. Most of the material will be chipped and removed to be utilized as biomass for electricity production in local Co-Generation Plants.

Project Map:



Lassen County CWPP 2010 Work Plan

Heavy Mtn. (non WUI)

Agency: BLM, Eagle Lake Field Office

Project: Heavey Mtn. Stewardship Project

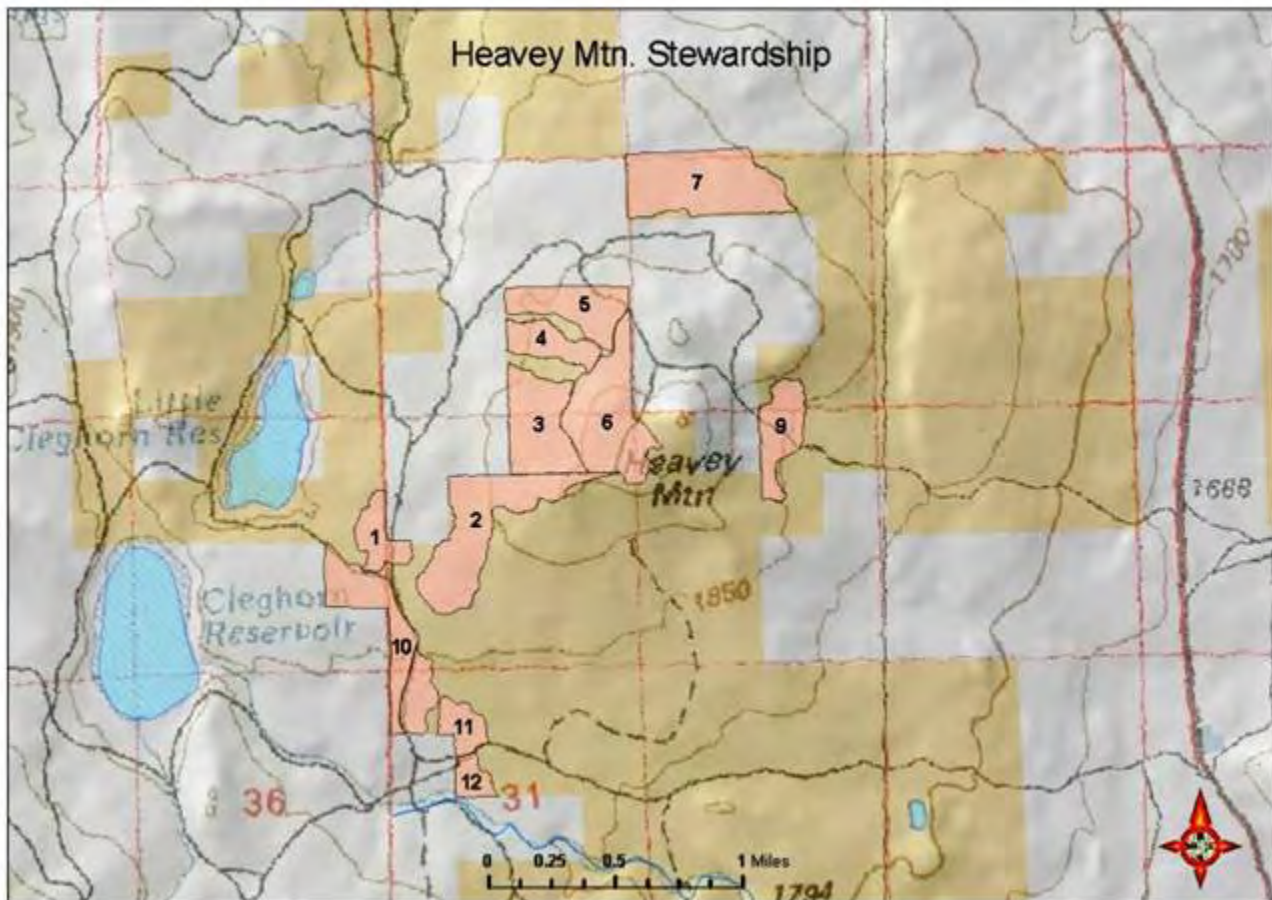
Project Coordinates: 40.7857 N 120.7731 W

Summary:

Proposed Action

Using Stewardship Contracting Authority, conduct pre-commercial thinning of 572 acres using mechanical treatments to reduce high densities of Ponderosa Pine. Work on the ground is to begin early winter/spring of 2010. The main objective is to reduce competition and improve overall stand health of commercial forest. Added benefits are a reduction of the threat of catastrophic wildfires by removing excess fuels and to restore the project area to a more healthy and productive forest ecosystem. Most of the material will be used for saw logs and or chipped and removed to be utilized as biomass for electricity production in local Co-Generation Plants.

Project Map:



Lassen County CWPP 2010 Work Plan

Susanville (WUI)

Agency: BLM, Eagle Lake Field Office

Project: Jacks Valley Stewardship Project

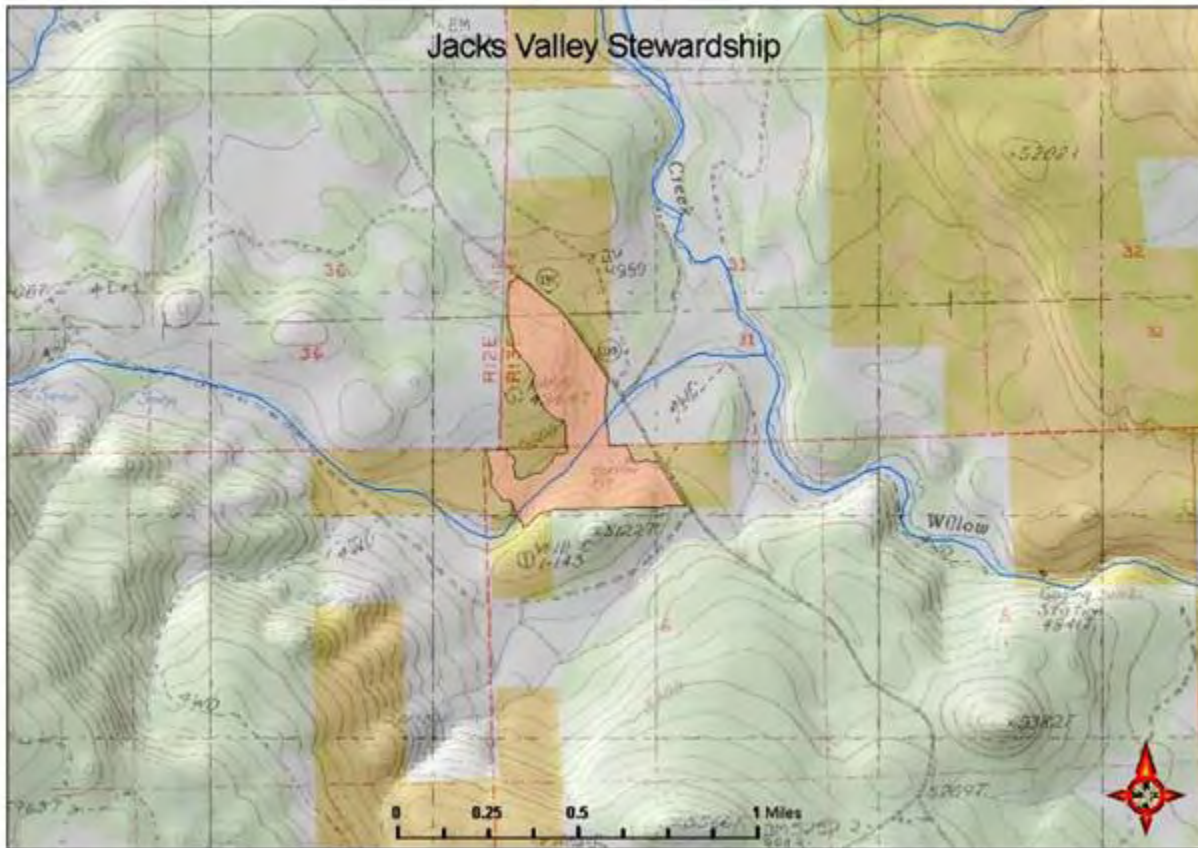
Project Coordinates: 40.4942 N 120.5620 W

Summary:

Proposed Action

Using Stewardship Contracting Authority, conduct pre-commercial thinning of 94 acres using mechanical treatments to reduce high densities of Ponderosa Pine. The main objective is to reduce competition and improve overall stand health of commercial forest. Added benefits are community protection by the reduction of the threat of catastrophic wildfires in the WUI by removing excess fuels and to restore the project area to a more healthy and productive forest ecosystem. Most of the material will be used for saw logs and or chipped and removed to be utilized as biomass for electricity production in local Co-Generation Plants. This project is being funded by ARRA (American Recovery and Reinvestment Act) and is planned to go out for solicitation in the spring of 2010 and work begun in the summer of 2010.

Project Map:



Lassen County CWPP 2010 Work Plan

Agency: USFS, Eagle Lake Ranger District

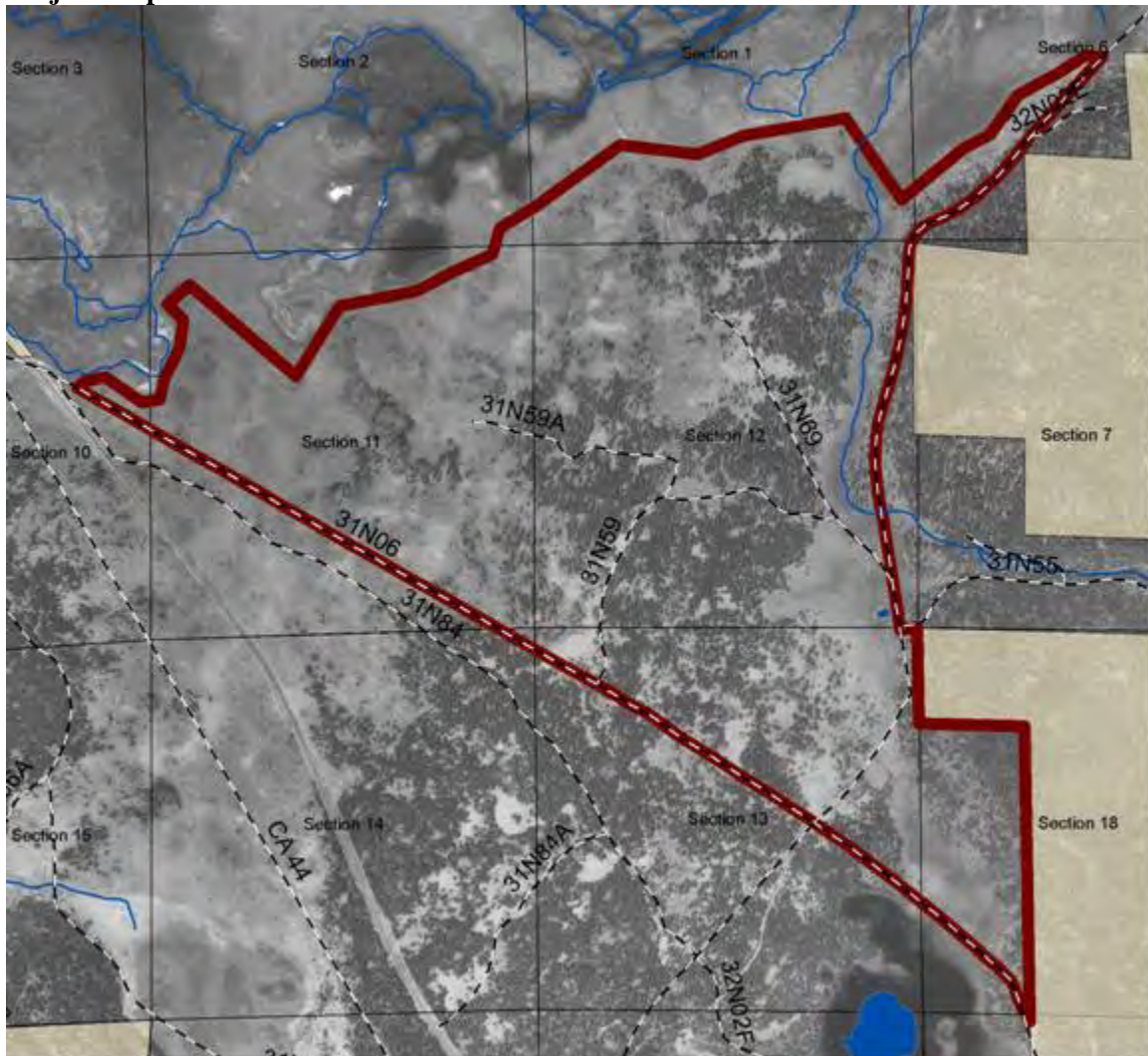
Project: Bailey Restoration Project

Legal Location: T31N R8E Sections 1, 2, 10, 11, 12, 13, 14 and T31N R8E Sections 6, 18

Summary: The Bailey Restoration Project would be located on the northeast side of CA Hwy 44 and on the southern edge of Pine Creek Valley. These 1,539 acres range from timbered land to open pine savannah to meadow encroached by conifers. Proposed treatments would include thinning, pine savannah restoration, and meadow restoration through commercial timber harvest and hand-thinning. Subsequent treatments would include prescribed burning of the understory and/or piling and burning of activity-generated fuels.

Status: The Environmental Assessment has been completed and signed by the responsible official and the contract for the thinning work has been awarded.

Project Map:



Lassen County CWPP 2010 Work Plan

Agency: USFS

Project: Diamond Mountain Wildland Urban Interface (WUI) Fuels Treatment

Project Coordinates: N 40.3125 W 120.6833

Summary:

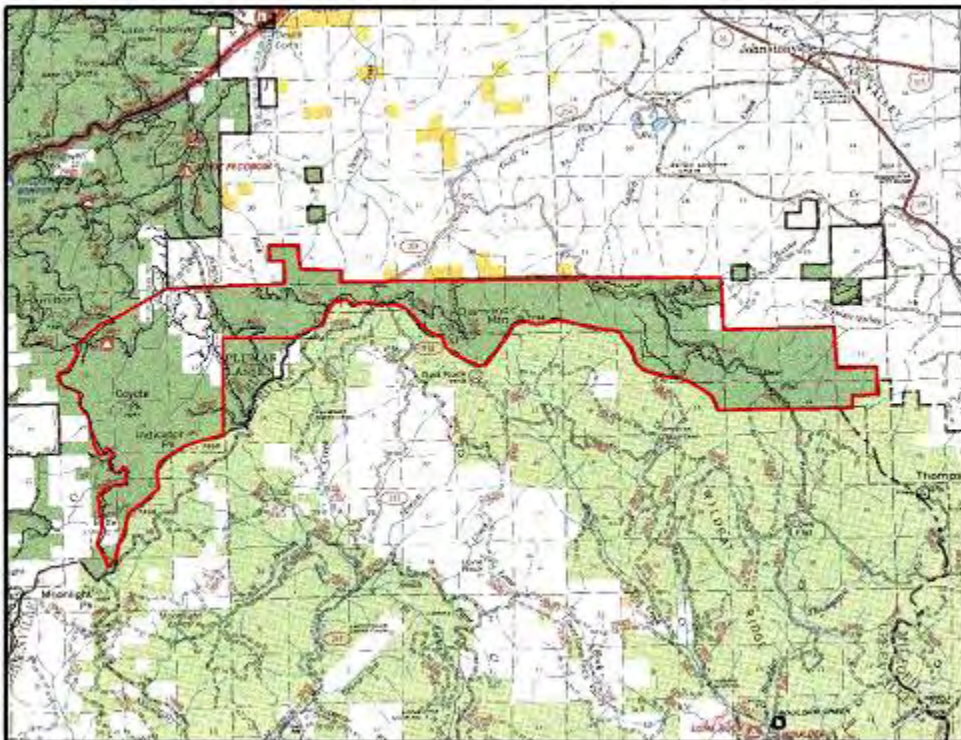
The Lassen National Forest is proposing to create a fuel break to provide protection from wildfire to the communities of Susanville, Janesville and other residences in proximity to Forest Service lands in the Diamond Mountain area.

Status:

Data collection has been completed. Development of the proposed action will occur this year.

Project Map:

Proposed Wildland Urban Interface Fuels Treatment Area



**Lassen County CWPP 2010 Work Plan
Susanville**

Agency: US FOREST SERVICE

Project: EBLIS EASTSIDE PINE RESTORATION PROJECT

Project Coordinates: T32N, R6E, Sections 1-3, 10-12; and T33N, R6E, Sections 22-23, 26-27, 34-36

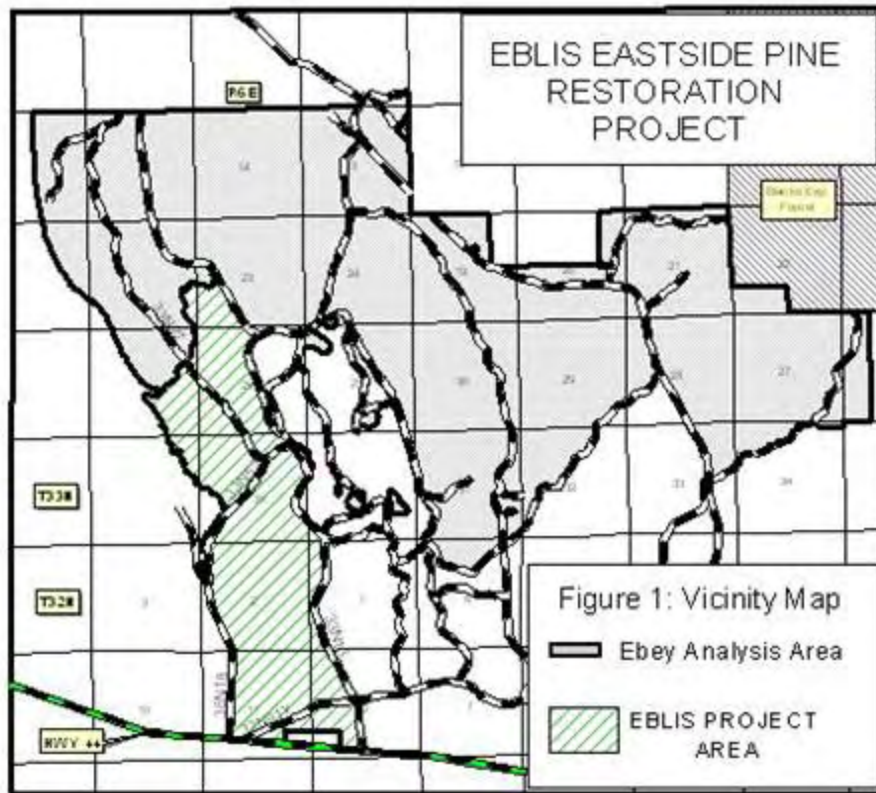
Summary:

The Eagle Lake Ranger District (ELRD) of the Lassen National Forest (LNF) is proposing the Eblis Eastside Pine Restoration Project (Eblis Project). Proposed activities consist of approximately, 640 acres of defensible fuel profile zones (DFPZ), 300 acres of individual tree selection (ITS), 365 acres of pine ecotone enhancement and 35 acres of aspen enhancement. Prescribed fire would occur within the project area following silvicultural treatments.

Status:

The contract for the thinning work has been awarded and work on the ground will begin this summer.

Project Map:



Lassen County CWPP 2010 Work Plan Susanville

Agency: USFS, Eagle Lake Ranger District

Project: Eagle Lake Recreation Thinning STWD

Legal Location: T31N, R10E, Sections 3, 10, 11, 13, and 14, and R11E, Section 7, 8 and 18

Summary: The Eagle Lake Ranger District is proposing a thinning within the Wildland Urban Interface (WUI) located along County Road A1 and the Recreation Facilities at the South end of Eagle Lake. The objective is Forest Health with a secondary benefit of reducing fuels. There is a total of 365 acres proposed for treatment.

Proposed as a Stewardship Contract, this project is a collaborative effort to keep the public informed and involved with projects on the Eagle Lake Ranger District. This project is intended for implementation in 2010 thru 2012.

Project Map:



**Lassen County CWPP 2010 Work Plan
Susanville**

Agency: US FOREST SERVICE

Project: EBEL EASTSIDE PINE RESTORATION PROJECT

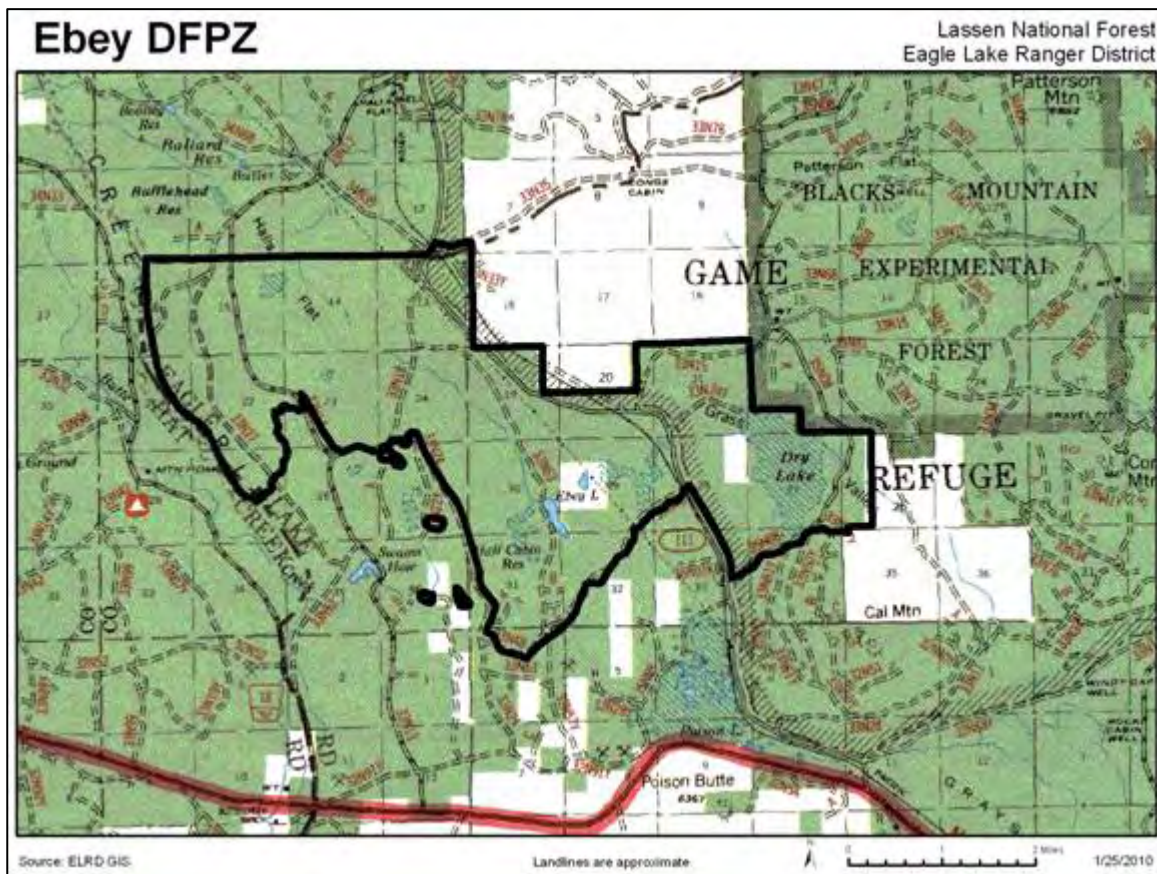
Project Coordinates: T32N, R6E, Sections 1-3, 10-12; and T33N, R6E, Sections 22-23, 26-27, 34-36

Summary:

The Eagle Lake Ranger District (ELRD) of the Lassen National Forest (LNF) is proposing the Eblis Eastside Pine Restoration Project (Eblis Project). Proposed activities include the construction of defensible fuel profile zones (DFPZ), individual tree selection (ITS), and pine ecotone enhancement. Prescribed fire would occur within the project area following silvicultural treatments.

The proposed action is currently being developed.

Project Map:



Lassen County CWPP 2010 Work Plan Susanville

Agency: U.S.F.S.

Project: Elysian Valley Black Oak Enhancement within a WUI

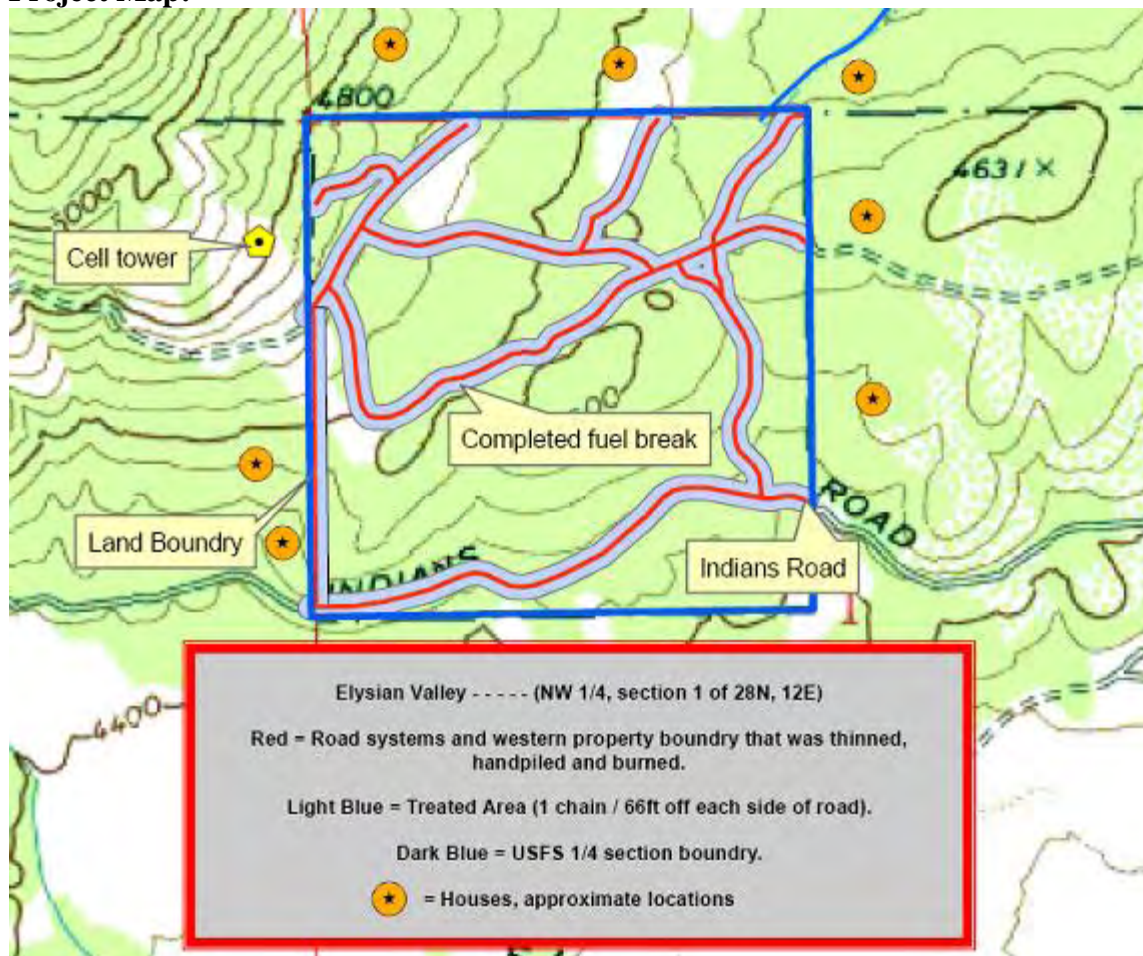
Project Coordinates: N40 19.128 W120 34.926; 28N - 12E - NW ¼ of sec. 1

Summary: The USFS is conducting an oak enhancement and hazardous fuels reduction project in the ¼ section of F.S. land near Elysian Valley (see map).

This project will consist of mechanical and/or hand thinning to help improve the health and vigor of black oak and to help strengthen the buffer created along the roads and reduce the threat of wildfires to the structures around the Elysian Valley parcel.

Status: The contract for the thinning work has been awarded and operations will begin soon.

Project Map:



Lassen County CWPP 2010 Work Plan Susanville

Agency: USFS, Eagle Lake Ranger District

Project: Orphan/Polydent DFPZ STWD

Legal Location: **Orphan** T31N, R8E, S8,16,17,20,21.

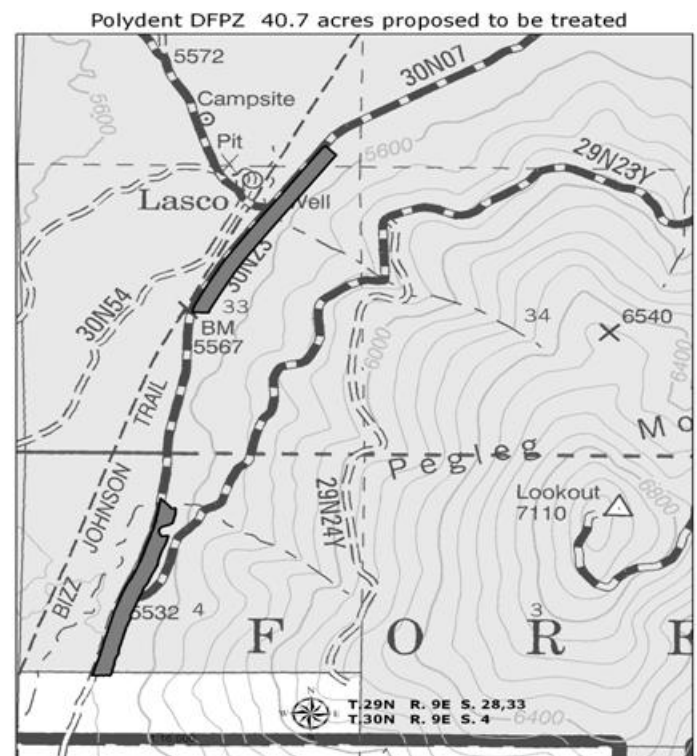
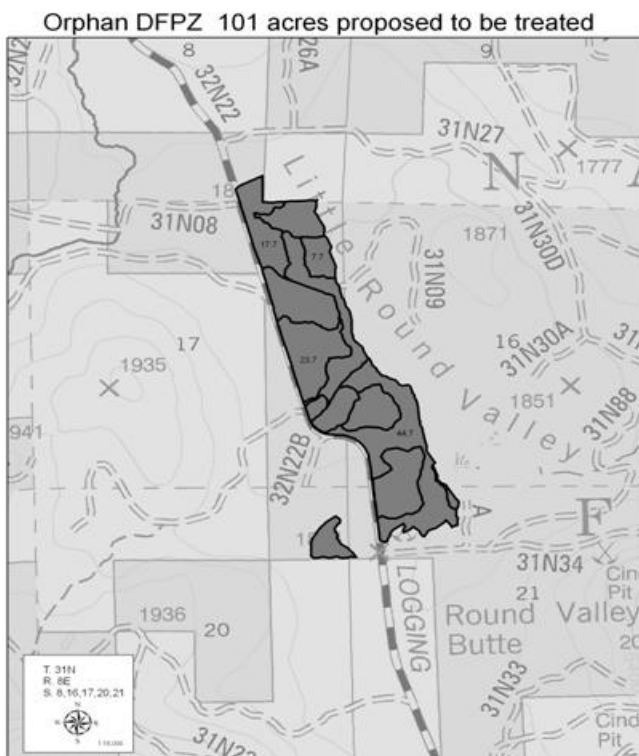
Polydent T29N, R9E, S28,33.

T30N, R9E, S4.

Summary: The Eagle Lake Ranger District is proposing the construction of DFPZs (defensible fuel profile zone) along three of the forests main roads 32N22, 30N23 and the 30N07, the objective being the reduction of fuels. Proposed treatment would include biomass removal and thinning. Subsequent treatment would include prescribed burning of the activity generated fuels. A total of 142 acres are proposed for treatment.

Proposed as a Stewardship Contract, this project is a collaborative effort to keep the public informed and involved with projects on the Eagle Lake Ranger District. This project is intended for implementation in 2010.

Project Maps:



**Lassen County CWPP 2009 Work Plan
Susanville**

Agency: USFS

Project: Willow

Project Coordinates: N 40° 0' 7.4", W 121° 31' 13.3"

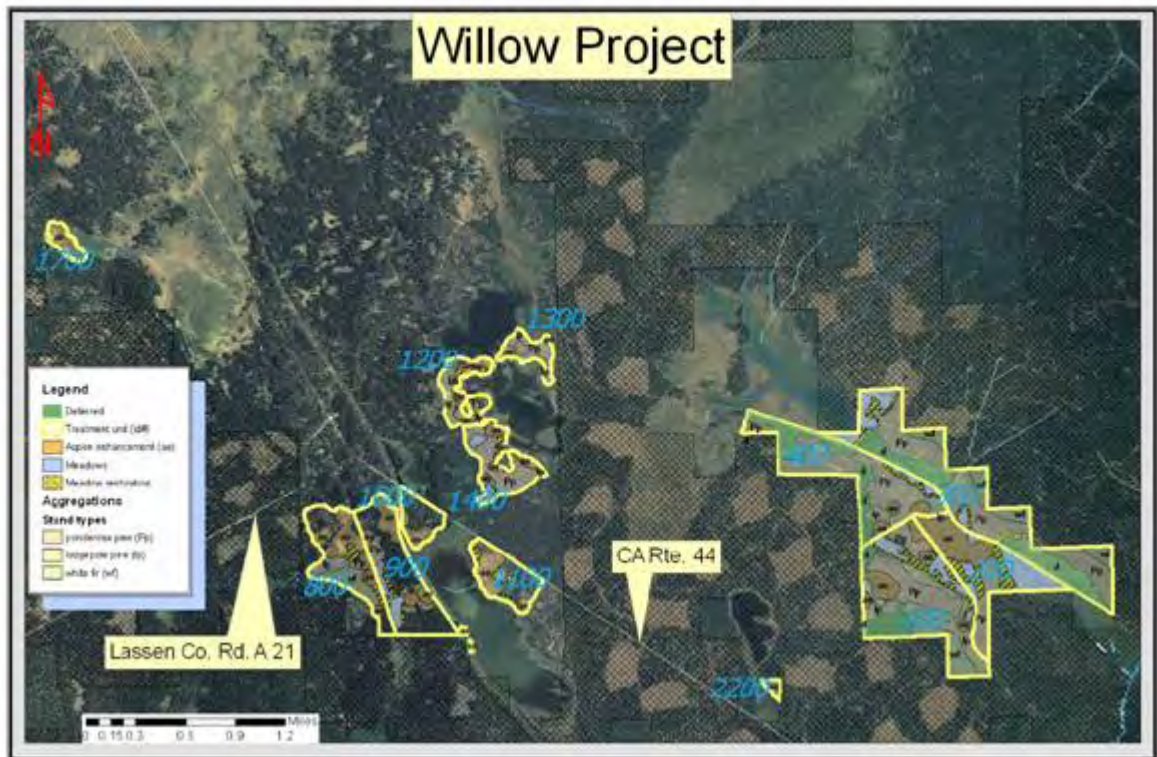
Summary:

The USFS is proposing the Willow project which would restore 46 aspen stands and 10 meadow communities, treating approximately 696 acres. In addition 823 acres of pine restoration and DFPZ treatments would be conducted. The total proposed project area is approximately 1519 acres. Goals of the proposed treatments are; a) Remove conifer competition and establish buffers to improve viability and prevent loss of aspen stands, remove conifers which have encroached into meadows, and thin pine and fir stands in the project area to improve stand health and resiliency.

Status:

Work on the Environmental Assessment has been completed and will be signed by the responsible official by February.

Project Map:



Agency: USFS, Modoc NF

Project: Ash Vegetation Treatment

Acres: 5340

Project Coordinates: N 41.155945 W 120.816693

Summary: The Ash Vegetation Treatment project will implement thinning and underburning of timber stands to reduce the susceptibility of western pine beetle and mountain pine beetle attacks; improve forest health and wildlife habitat; and reduce the risks of large scale catastrophic wildfires to forest and private land.



Agency: USFS, Modoc NF

Project: Willow Creek Highway Safety Improvement Project

Acres: 93

Project Coordinates: N 40.992227 W 120.803575

Summary: This project will result in the removal of hazard trees from mile markers 47.5 to 55 on Highway 139 in Lassen Co. Stand thinning will also occur where necessary to improve forest health and reduce the risks of wildfire.

