

Lassen County Community Wildfire Protection Plan 2012 Work Plan

Lassen County



March 2012



Representatives of resource, fire planning and prevention interests met on February 7, 2012 to develop the Lassen County Community Wildfire Protection Plan, 2012 Work Plan. The process began in December of 2011, through online collaboration and reporting, and it was completed in late March of 2012.

Pictured at the annual meeting above are, from left to right, Back Row: Jim Miguel & Mandi Callis, Modoc National Forest; Casey Boespflug, BLM Surprise Valley; Al Savage, BLM Alturas Field Office; Cathy Dirden, LCFSC; Mark Shaffer, RPF, HL Power, LP; Karl Todd, BLM-Eagle Lake Field Office; Mark Pustejovs, RPF, Sierra Pacific Industries, Dave Ramirez, Lassen National Forest; Heather Munn, Plumas National Forest; Linda Hansen, Sierra Nevada Conservancy; ; Don Fregulia, Plumas National Forest ; Jack Hansen, Lassen County Supervisor; Phil Nemir, RPF; Dan Douglas, Lassen County Transportation & LCFSC; Mike Holmes, Lassen National Forest; Deb Bumpus, Lassen National Forest; Eric Peterson, Plumas National Forest; Ivan Houser, RPF, Front Row: Jeff Young, CalFire; Bob Beebe, Modoc National Forest; Tom Esgate, LCFSC; Don Hansen, RPF, LCFSC; Frank Stewart, RPF, CAFSC and Quincy Library Group; Nikki, Bow Wow.

Collaboration through the Years!



Initial CWPP Planning Group 2005



2006
Executing
the CWPP



2008 CWPP
Work
Plan
Update



2009 CWPP Work Plan Update



2010
CWPP
Work Plan Update



2011 CWPP Work Plan Update
with Plumas and Sierra County
Fire Safe Council Representatives.

Table of Contents

Priority Private Land Project List	vi
2012 Wildland Urban Interface Map (Note for best viewing of this map go to lassenfiresafecouncil.org and select CWPP >WUI Map)	1
2012 CWPP Base Map (Note for best viewing of this map go to lassenfiresafecouncil.org and select CWPP >Base Map)	2
Private Land Projects	
Lassen County Fire Safe Council, Inc. Narrative	3
Education Program	4
Clear Creek	6
Diamond Mountain	7
Doyle	8
Eagles Nest	9
Janesville	10
Lookout/Nubieber	11
Little Valley	12
Milford	13
Spaulding	14
Honey Lake Valley Resource Conservation District	
Diamond Mountain Forest & Meadow Restoration	15
Private & Public Land Projects	
Cooperative Sagebrush Steppe Restoration Initiative Narrative	16
Ash	17
Ash Valley III Watershed Restoration Project	18
Ash Valley IV	19
Cooperative Conservation Partnership Initiative	20
Hayden Hill	21
McBride Springs	22
McClelland	23
Tribal Land Projects	
Susanville Indian Rancheria	
Cradle Valley	24
Upper Rancheria Fuel Break	25
Public Agency Projects	
Bureau of Land Management, Alturas Field Office Narrative	26
Ash Valley Ranch Juniper Reduction	27
Blue Door Juniper Reduction	28
Hayden Hill Sagegrouse Restoration	29
Knox Mtn. Timber Sale	30
Mitchell Hill Juniper Reduction	31
South Ash Valley Juniper Reduction	32

South Mitchell Hill Juniper Reduction	33
Stipa Harter RX	34
Widow Peak Thinning	35
Williams Ranch Juniper Reduction	36
Bureau of Land Management, Eagle Lake Field Office Narrative	37
Bald Hills	39
Brush Hills	40
Diamond Mountain Stewardship	41
Dodge Reservoir Stewardship	42
Fredonyer Peak Stewardship	43
North Horse Stewardship	44
Shoals Creek Sage-Steppe Restoration Project	45
South Cleghorn & North Eagle Stewardship	46
South Grasshopper Stewardship	47
Lassen National Forest, Eagle Lake Ranger District Narrative	48
Campbell DFPZ NEPA	49
Cowbell Thinning Project	50
Crater Underburn	51
North Diamond NEPA	52
Dragon Project	53
Orphan DFPZ STWD	54
Pole Spring Plantation Mastication	55
Ploydent	56
Willow DFPZ	57
Modoc National Forest, Big Valley Ranger District	
Ash Vegetation Treatments	58
Willow Creek Highway Safety Improvement Project	59
Plumas National Forest Narrative	60
Clarks Aspen Timber Sale	61
Thompson Aspen Stewardship	62

CalFire Lassen Modoc Unit Fire Plan

Incorporated into the Lassen County CWPP 2012 Work Plan by Reference:

www.fire.ca.gov

The Lassen County CWPP Work Plan ranks private land projects according to guidelines recommended by the National Association of State Foresters, which state:

Projects are prioritized based on the probability of success, community involvement and collaboration, and sustainability.¹

2012 CWPP Work Plan Private Land Priority Projects Ranking

- 1. Clear Creek**
- 2. Little Valley**
- 3. Janesville**
- 4. Milford**
- 5. Diamond Mountain Forest & Meadow Restoration**

¹ Dan Smith, Fire Director, National Association of State Foresters, Presentation at the 2012 Wildland Urban Interface Conference, Reno Nevada.

Please see our online Wildland Urban Interface Map by clicking the link below:

<http://www.lassenfiresafecouncil.org/2012-adopted-lassen-wui-map/>

Please see our online Base Map by clicking the link below:

<http://www.lassenfiresafecouncil.org/county-fire-plan-base-project-map-2011/>



Lassen County Fire Safe Council

Dorine Blankenship, Chair
Jerry Fraticelli, Vice Chair
Cathy Dirden, Secretary/Treasurer

P.O. Box 816 • Susanville, CA 96130 • (530) 251-5560 • www.lassenfiresafecouncil.org

March 31, 2012

This year marks the 6th year that the Lassen County Community Wildfire Protection Plan (CWPP) Working Group has gathered, reviewed and ranked projects and also reviewed and adopted changes to the Wildland Urban Interface boundaries throughout the county. Each year we are finding more ways to work collaboratively together.

Lassen County Fire Safe Council, Inc. continues to build on our strong partnerships and we have an aggressive program of active and planned fuel treatments. We are also ramping up the pace of getting Lassen County communities organized through the *Firewise Communities USA* program with 6 active communities to date.

Part and parcel of this *Firewise* effort is our one-on-one contact with residents through our Risk Assessment in the Home Ignition Zone consultations. Here residents learn what they can do to reduce structural ignitability in the advent of a nearby wildfire. Over 200 were conducted last year. One important point to remember: **Many of the homes that are lost in wildfires are ignited by embers from a fire a substantial distance away, and then the home ignites the adjacent vegetation, not vice versa!** As we say in our homeowner consultations: "This new information is standing things on their head in California where there is a huge and important emphasis on defensible space." Just having defensible space will not protect the home from an ember shower, one must also address structural ignitability. We continue to receive rave reviews from residents during our visits and we often hear "I had no idea..."

Last year we set another record for acres treated within our communities with over 1,200 acres completed in the Susanville area, Lake Forest, and the Day Lassen Bench community. This year will be another busy year with funded projects in Clear Creek, Janesville and Big Valley, and potentially more when the Sierra Nevada Conservancy makes their funding decisions in June.

None of our work would be possible without the Title III funding financial support that has been granted to us by the Lassen County Board of Supervisors. They support our activities and in turn we leverage these funds to bring more *Firewise* programs and treatments to our communities. That helps protect residents and it helps residents protect themselves.

A big thank you to all our partners in the Lassen County CWPP Working Group,

Dorine Blankenship,

Chair



We are active participants in FIREWISE Communities USA programs.

Lassen County 2012 CWPP Work Plan

WUI Area: Throughout Lassen County

Funding: Funded – Title III

2012 Implementation

Acres: N/A

Agency or Agencies: **Lassen County Fire Safe Council**

Project Name: **Education Program**

Project Coordinates: N/A

Summary of Project: LCFSC Education Program will continue the “Firewise in the Classroom” 6th grade educational program throughout Lassen County. The program will be improved by the development and distribution of a new booklet we will title “Welcome to the Northeastern Region – A Guide to Living Lightly In Lassen County” . This booklet will replace one we have been using since inception of our 6th grade program called “Living in the Foothills”. However this document is no longer available and is out of print so a new updated replacement is necessary for incorporation into our Firewise education program. We will also be reaching out to our local teachers for assistance in conducting another County Superintendent approved county-wide 6th grade teacher "In-Service" training on the classroom curriculum in order to make sure all teachers are presenting the classroom program correctly, completely and successfully as designed. This year will be our fourth year presenting the program to our children. Now with all schools in Lassen County presenting the Firewise education program we will keep the curriculum fresh and exciting to the students yet make it fun for the teachers to present to the children while all the while providing informative, relevant information.

We are planning improvements to the “Smokey Bear Park” at the Lassen County Fairgrounds with a continued focus on Firewise activities. We are working in partnership with the Lassen and Plumas NF, Eagle Lake BLM, and CalFire prevention staff. We will also be making improvements/upgrades of the Firewise parade float for use during community events and parades.

The LCFSC Education Director will continue visiting additional communities this year promoting the “Firewise” message throughout the County. Firewise outreach will be provided at local events such as the Lassen County Science Fair, The Chamber of Commerce Home and Garden Show, the Lassen County Fair, Doyle Days, Lassen Land and Trails Trust Rails to Trails Festival as well as other local events as they become aware to us throughout the year.

In addition to the above we will continue to promote our third “Firewise Living with Fire” newspaper educational pamphlet which was distributed throughout the entire circulation of the Lassen County Times and Westwood Pine Press local newspapers late last year. Information provided in the publication focused on homeowner preparations needed to face an ember attack on homes and property, and techniques to mitigate the ember damage. We will also focus on

implementing our Emergency Responder House Numbering Signage Firewise project by continuing to search for grant opportunities that may provide a significant amount of funds for meaningful county-wide implementation. We are currently looking for grant opportunities that may be available through the Department of Homeland Security such as a Firefighter Community Safety Grant as recommended by the DHS for a program of this type.

We will continue our monthly Lassen County Fire Safe Council Education Committee meetings in an effort to develop new Firewise projects, as well as continue regular attendance at all Northeastern California Fire Prevention Council meetings.

Finally, we regularly update our Firewise website, www.lassenfiresafecouncil.org. Comments on improvements and suggestions for additional information, other agency website links, etc. are always welcomed and encouraged.

2012 Lassen County CWPP Work Plan

WUI Area: Westwood-Clear Creek

Funding: Partially Funded

2012 Implementation

Number of Acres: 1850

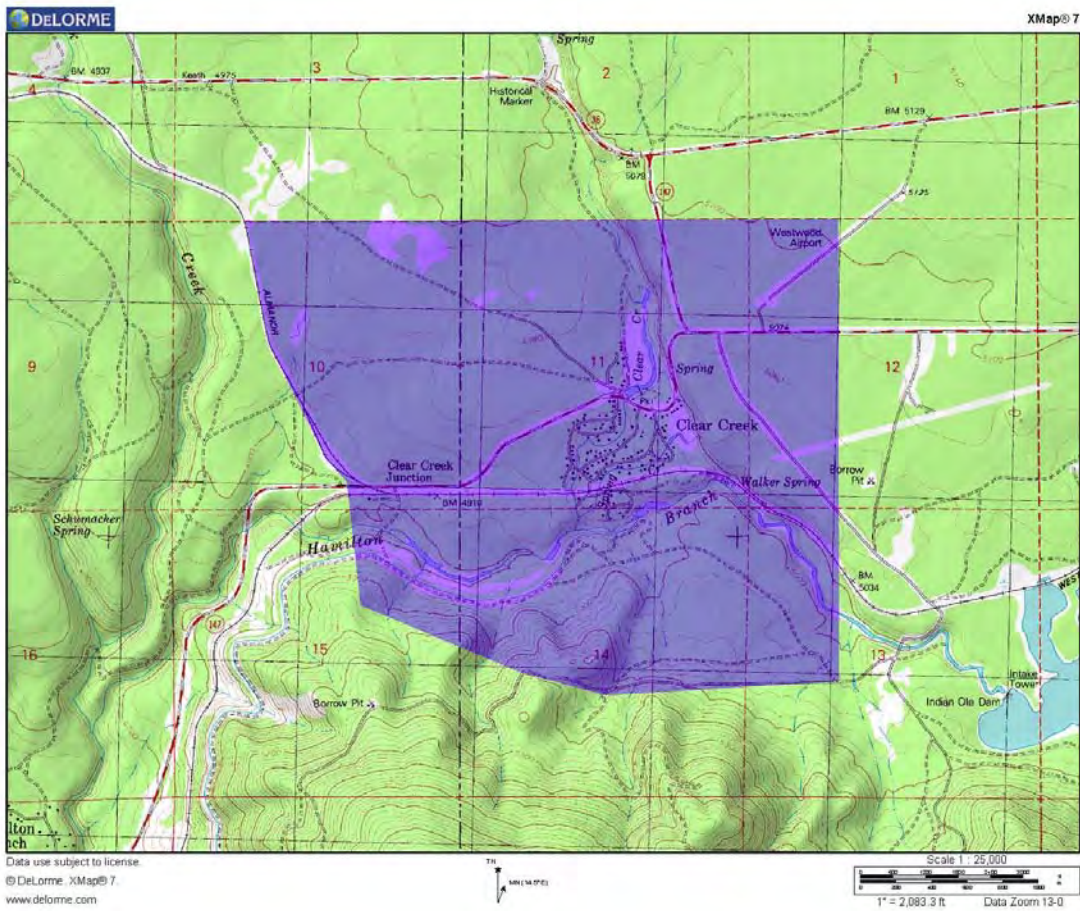
Agency or Agencies: LCFSC, SPI, CalFire, Clear Creek CSD

Project Name: Clear Creek Forest & Meadow Restoration Project

Project Coordinates: N40.29628 W121.05017

Summary of Project: LCFSC has received funds to perform landscape scale fuel treatments that will restore the watershed and reduce hazardous fuel loads within and around the Clear Creek community with its partner SPI. Forest stands will be thinned and small trees and brush fuels will be masticated where they pose a threat to homes and/or are within potential evacuation corridors. Biomass utilization of material will be used to reduce costs. We will also perform Risk in the Home Ignition Zone/structure ignitability assessments with community residents. CalFire has committed conservation crews for hand treatments around the community. LCFSC is requesting additional funds from SNC.

Project Map:



2012 Lassen County CWPP Work Plan

WUI Area: Susanville

Funding: Planning/Not Funded

2012 Planning

Number of Acres: 7000

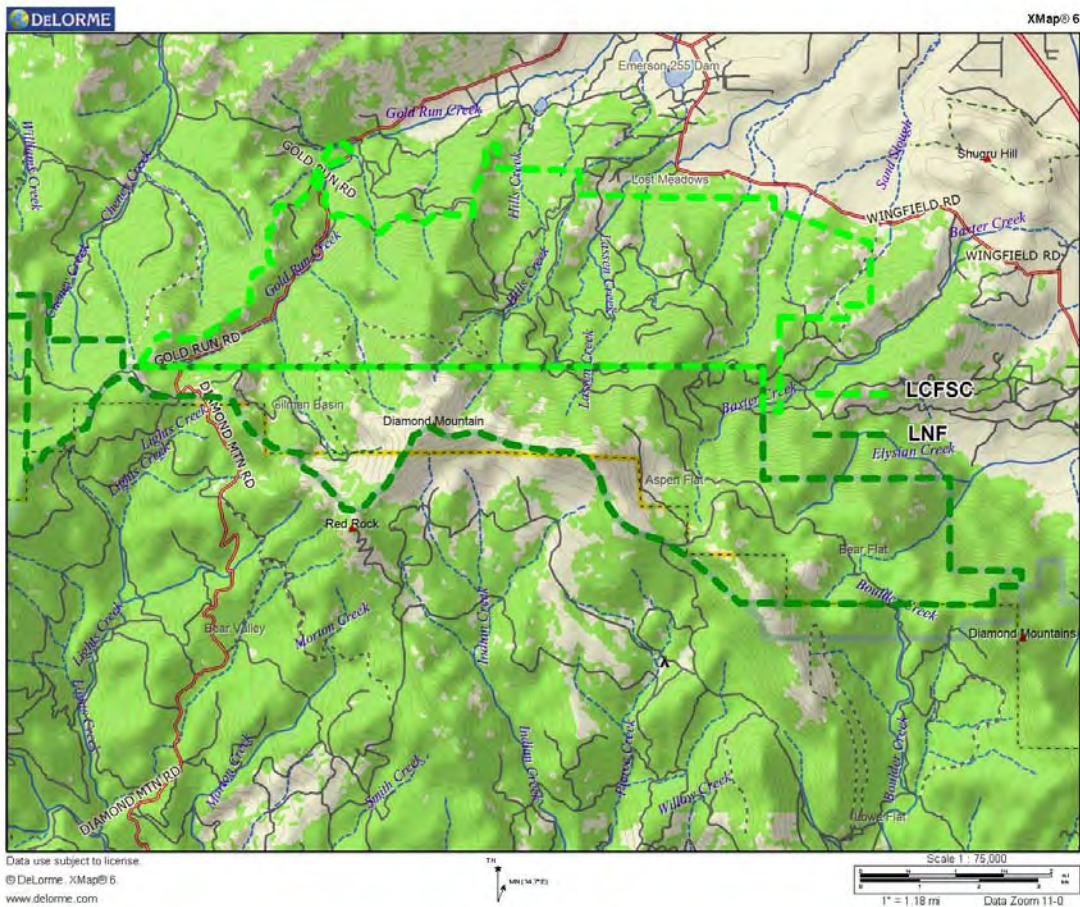
Agency or Agencies: LCFSC

Project Name: Diamond Mountain

Project Coordinates: N40.3214 W120.6690

Summary of Project: LCFSC will begin planning with the Lassen National Forest (LNF) on a collaborative fuels treatment project along and below Diamond Mountain south of Susanville. LNF will be the lead for USFS land and LCFSC will be the lead for private land within the project area. It is anticipated the LCFSC will be asking for assistance from CFSC, CalFire and USFS with funding.

Project Map:



2012 Lassen County CWPP Work Plan

WUI Area: Doyle

Funding: Planning/Not Funded

2012 Planning

Number of Acres:

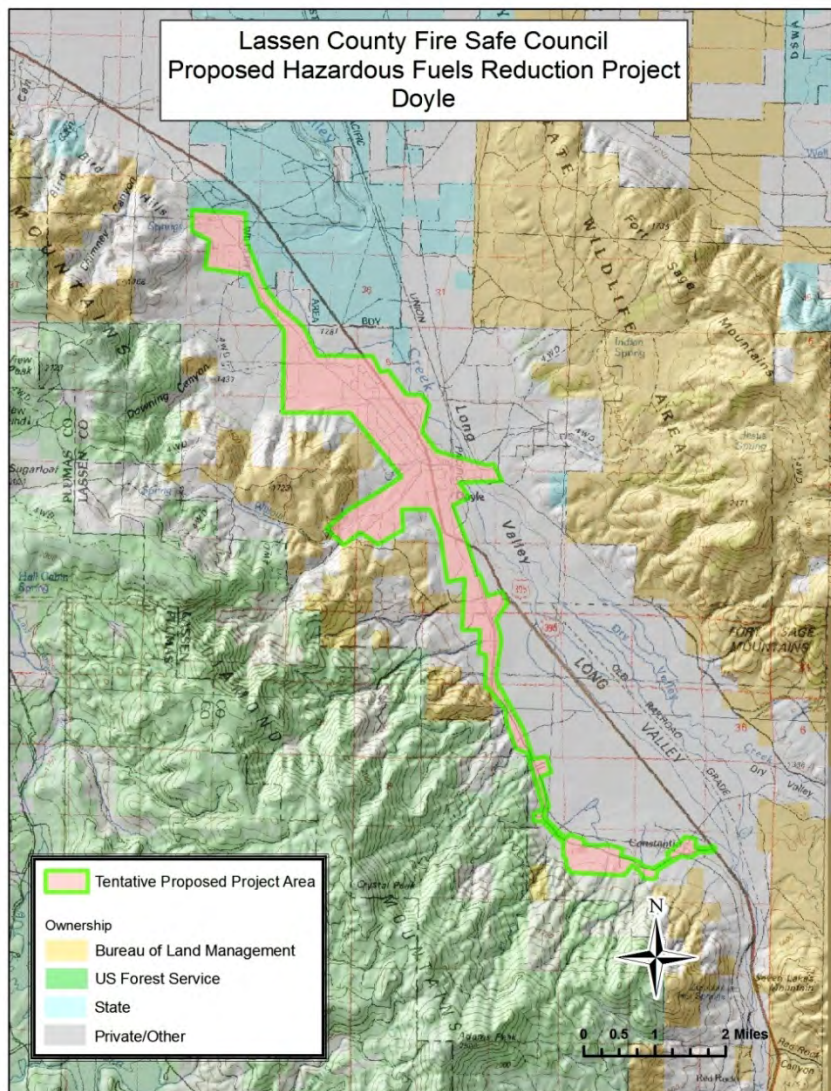
Agency or Agencies: LCFSC, PNF, BLM

Project Name: Doyle Fuel Treatments and Risk Assessments

Project Coordinates: N40.0273 W120.1030

Summary of Project: LCFSC, in conjunction with PNF and BLM, is in the initial planning stage of assisting the community of Doyle in gaining Firewise Communities USA status/certification and with a possible fuels treatment project that could include fuel breaks in sagebrush areas surrounding the community. Also under consideration could be private land forest thinning with cooperating landowners that are adjacent to PNF. Risk Assessments in the Home Ignition Zone/structural ignitability assessments would also be conducted with community residents. LCFSC has been making its initial contacts with community members.

Project Map:



2012 Lassen County CWPP Work Plan

WUI Area: South Eagle Lake

Funding: Planning/Not Funded

2012 Planning

Number of Acres:

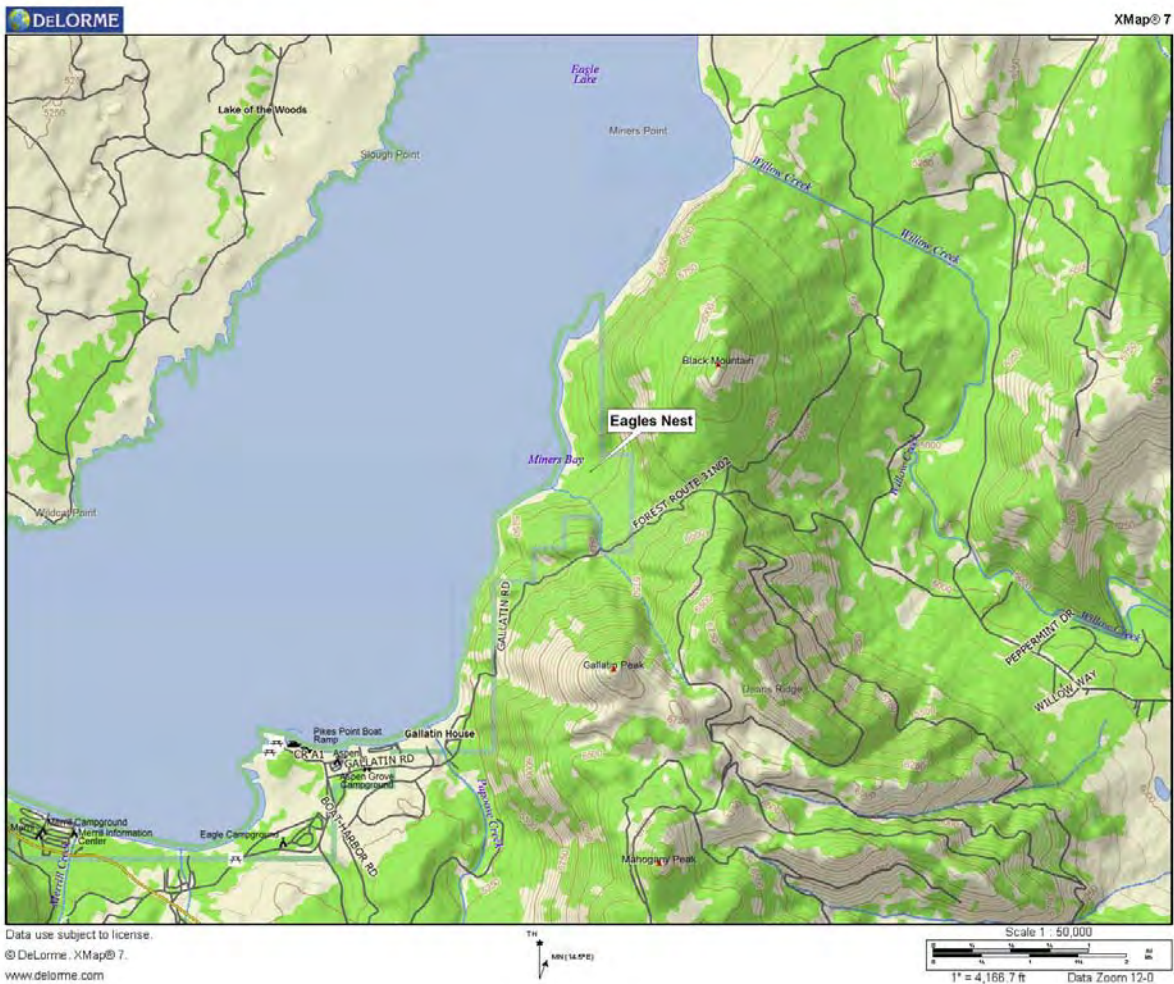
Agency or Agencies: LCFSC

Project Name: Eagles Nest Planning

Project Coordinates: N40.5830 W120.7450

Summary of Project: LCFSC will begin planning and scoping of a project in the Eagles Nest Community in the South Eagle Lake Community. Project is within LNF and we will be working with LNFELRD and neighboring property owner SPI.

Project Map:



2012 Lassen County CWPP Work Plan

WUI Area: Janesville

Funding: Partially Funded

2012 Implementation

Number of Acres: 400

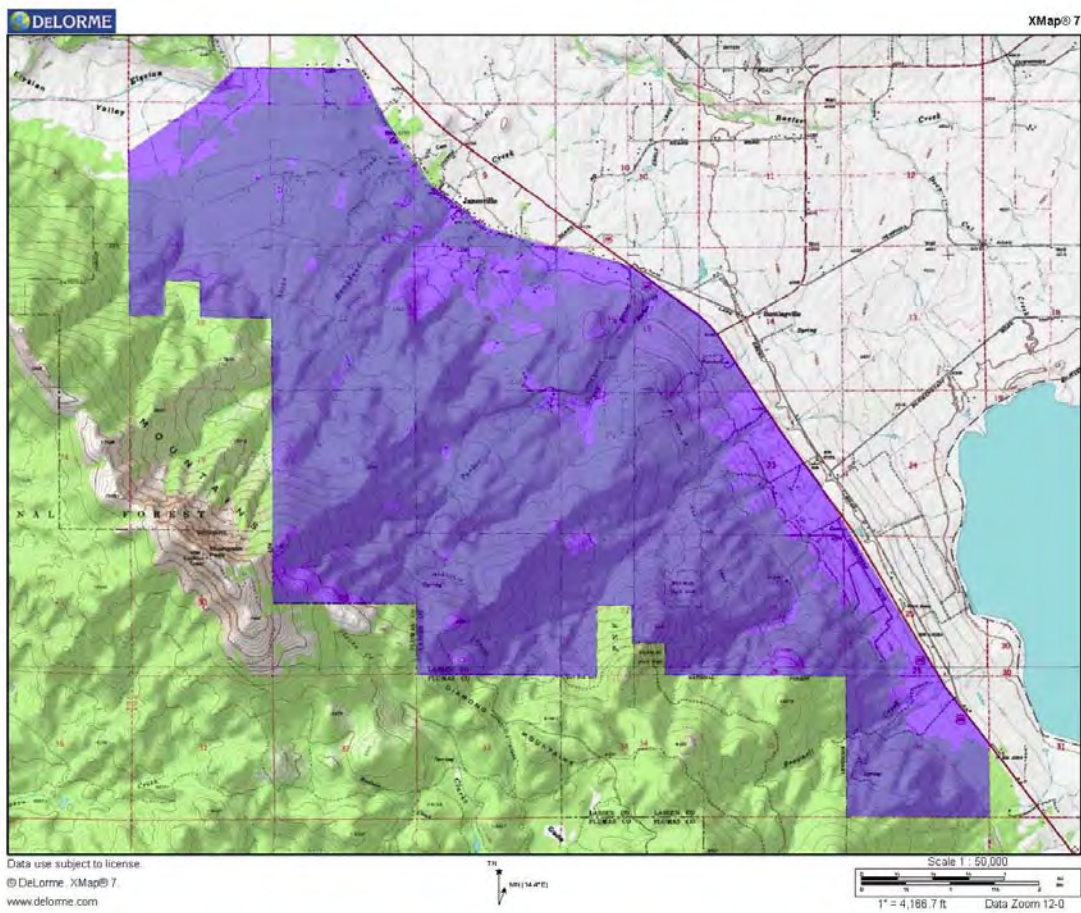
Agency or Agencies: LCFSC, Janesville Town Council

Project Name: Janesville Fuel Treatments and Risk Assessments

Project Coordinates: N40.26777 W120.49461

Summary of Project: Project anticipates the continuation of the 2010 fuel treatments and Risk Assessments in the Home Ignition Zone/structural ignitability assessments. More residents signed up in the last phase than the available funds would service. Lassen RAC has supplied partial funding and SNC funds are being requested for the balance. The planned treatments include developing defensible space around homes and potentially 400 additional acres of landscape scale fuel treatments. Forest stands would be thinned and brush fuels would be masticated where they pose a threat to homes and/or are within potential evacuation corridors. Biomass utilization of material would be used to reduce costs.

Project Map:



2012 Lassen County CWPP Work Plan

WUI Area: Lookout/Nubieber

Funding: Partially Funded

2012 Implementation

Number of Acres: 3277

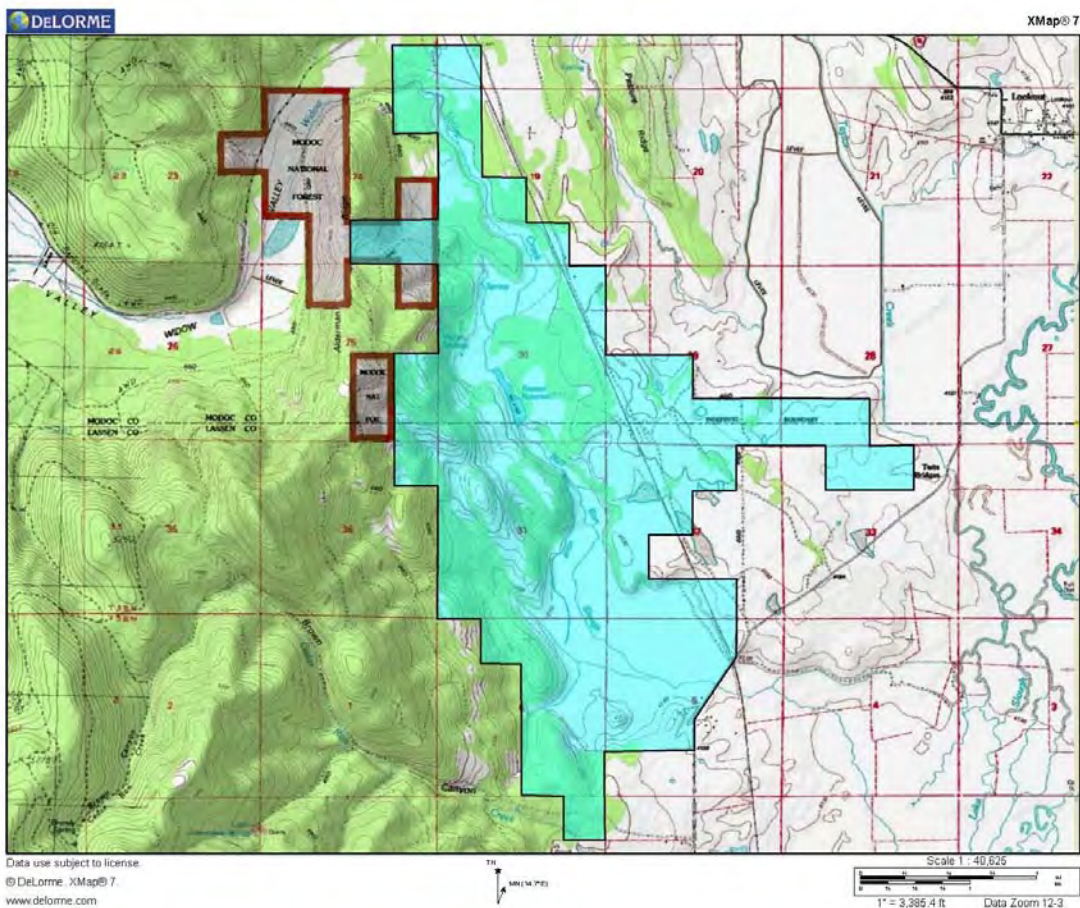
Agency or Agencies: LCFSC, PRCD, CalFire, CFSC

Project Name: Kramer Ranch Watershed Restoration Project

Project Coordinates: N41.1827 W121.2012

Summary of Project: Project reduces hazardous fuel loads and restores the forest, watershed and critical wildlife habitat. Invasive western juniper will be removed and pine stands will be thinned to 40-50% crown closures. Partially funded by CFSC and CalFire has committed Conservation Crews to assist with follow-up hand treatments. Additional funding requests are pending with the Western States Foresters and SNC. Project lies within Lassen and Modoc Counties and is also a top priority in the Modoc County CWPP.

Project Map:



2012 Lassen County CWPP Work Plan

WUI Area: Little Valley

Funding: Planning/Not Funded

2012 Implementation

Number of Acres: 2000

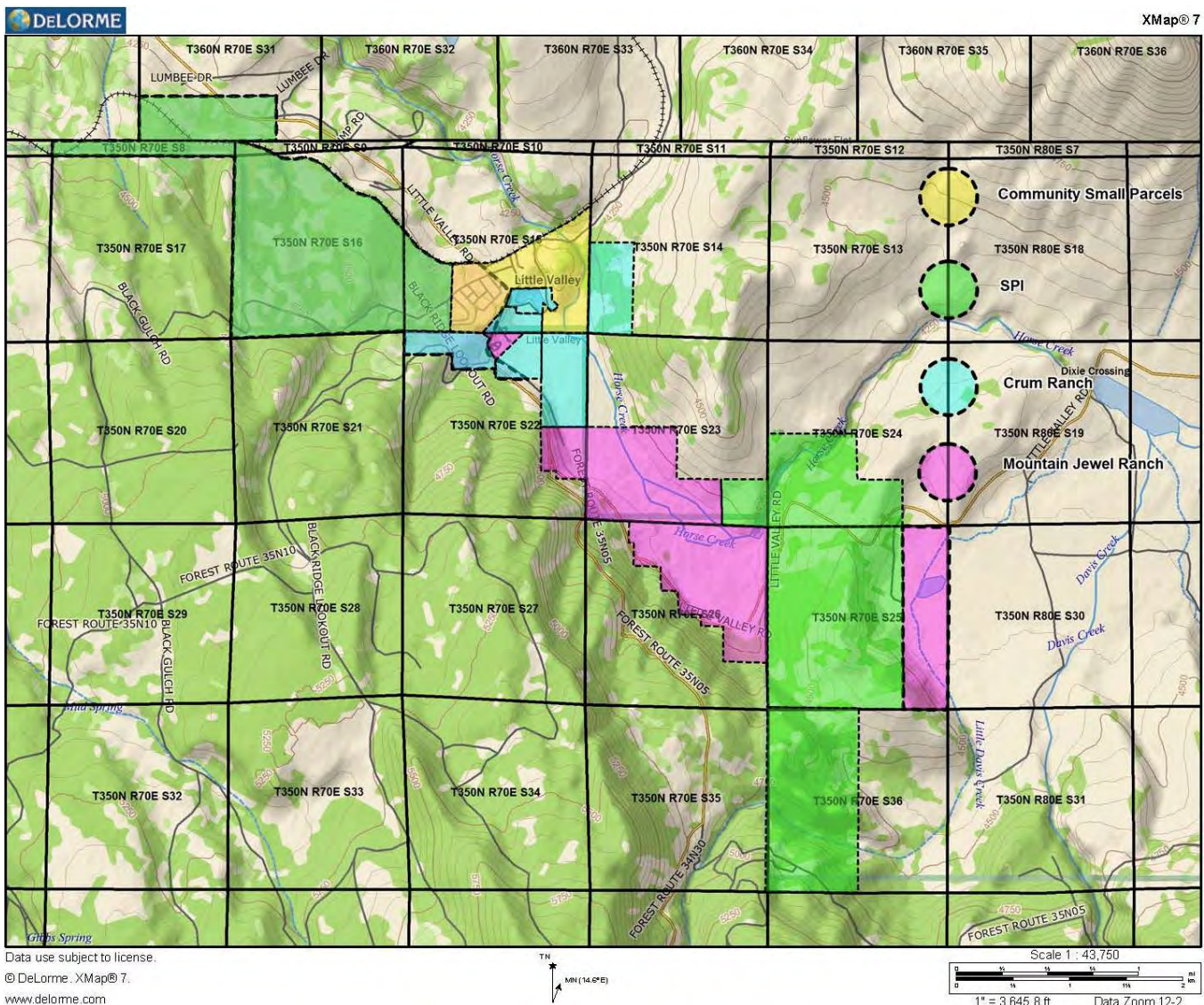
Agency or Agencies: LCFSC

Project Name: Little Valley Forest & Meadow Restoration Project

Project Coordinates: N40.8938 W121.1815

Summary of Project: LCFSC will be applying for implementation funds to conduct forest and meadow restoration treatments around the community of Little Valley. Primary work will be the removal of invasive western juniper and forest thinning in overstocked pine stands. LCFSC is working with SPI and 2 other major landowners on landscape scale treatments. The project will also assist community homeowners with treatments within the Little Valley residential neighborhood. Risk in the Home Ignition Zone/structure ignitability assessments within and around the community will also be part of the project.

Project Map:



2012 Lassen County CWPP Work Plan

WUI Area: Milford

Funding: Planning/Not Funded

2012 Implementation

Number of Acres: 400

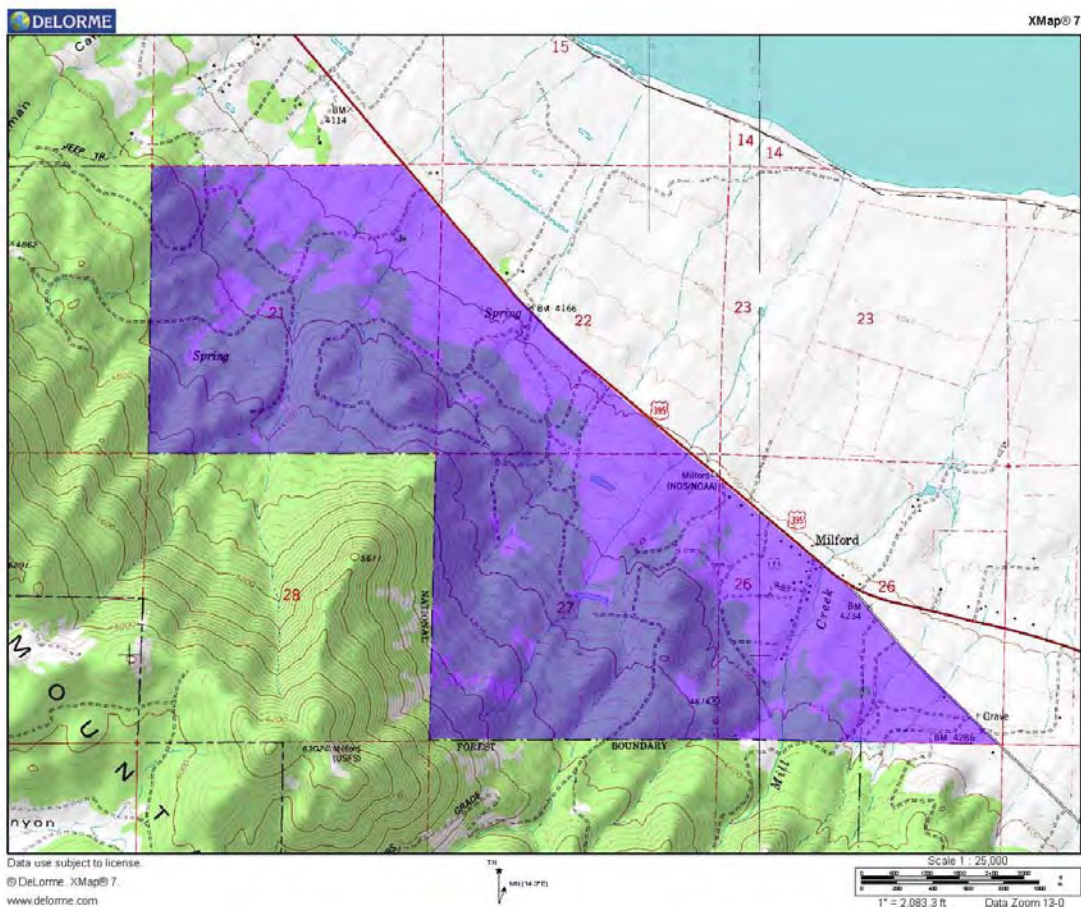
Agency or Agencies: LCFSC

Project Name: Milford Fuel Treatments and Risk Assessments

Project Coordinates: N40.1768 W120.3885

Summary of Project: LCFSC is applying for implementation funds to move this project forward. 400 acres of fuel treatments would be conducted along with Risk Assessments in the Home Ignition Zone/structural ignitability assessments. LCFSC will be working with the community of Milford to achieve Firewise Communities USA status/certification in the course of the project. Forest stands would be thinned and brush fuels would be masticated where they pose a threat to homes and/or are within potential evacuation corridors. Biomass utilization of material would be used to reduce costs.

Project Map:



2012 Lassen County CWPP Work Plan

WUI Area: Spaulding

Funding: Planning/Not Funded

2012 Planning

Number of Acres: 40

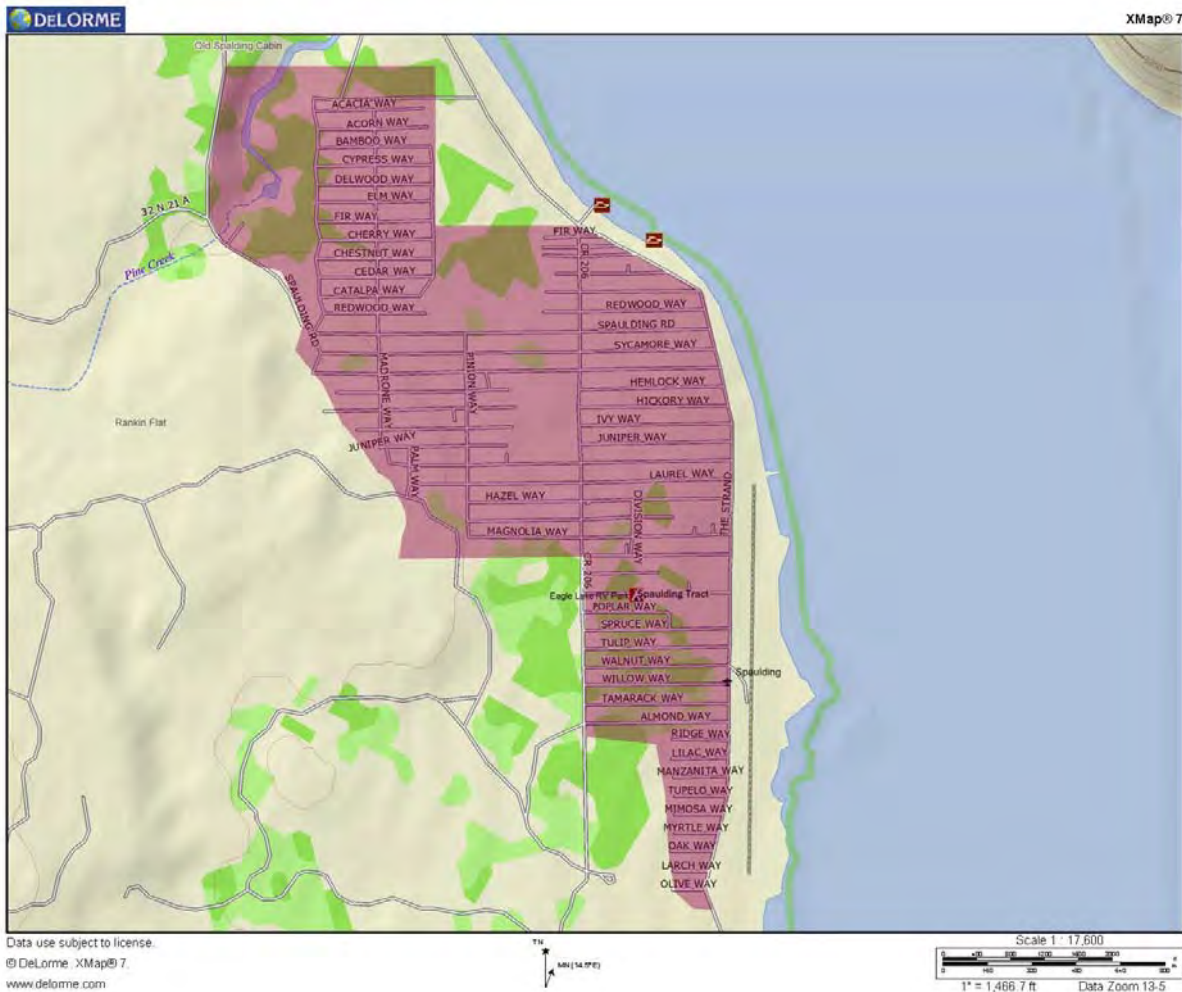
Agency or Agencies: LCFSC

Project Name: Spaulding Fuel Reduction Planning and Risk Assessments

Project Coordinates: N40.6573 W120.7759

Summary of Project: LCFSC will be applying for funds to perform risk assessments in the home ignition zone and fuel reduction treatments within and around the Spaulding community in Lassen County. Work will complement previously completed work by LNF. We may be asking for funding and/or assistance from CFSC, CalFire, Lassen County RAC or USFS

Project Map:



2012 Lassen County CWPP Work Plan

WUI Area: Susanville

Funding: Planning/Not Funded

2012 Implementation

Number of Acres: 477

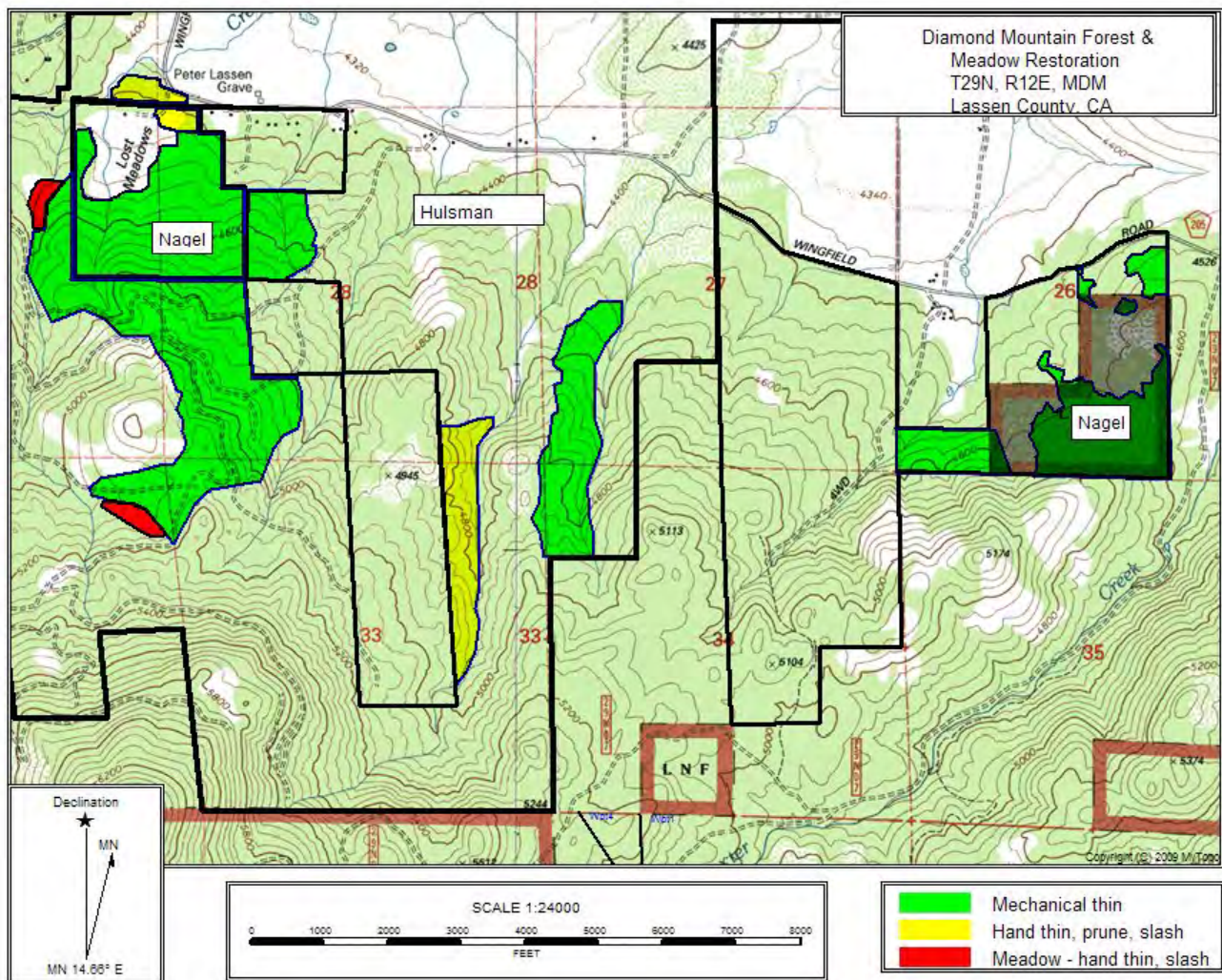
Agency or Agencies: Honey Lake Valley RCD

Project Name: Diamond Mountain Forest & Meadow Restoration

Project Coordinates: 40.3363N 120.6223W

Summary of Project: Restore/enhance ponderosa pine & Sierran mixed conifer forest, meadow and black oak & aspen hardwood ecosystems, reduce wildfire risk, improve public safety, and improve forest growth & resiliency through mechanical thinning of +/- 420 acres, hand treatment of +/- 48 acres, and conifer removal from +/- 9 acres on two meadows lying south of Wingfield Road on the north slope of the Diamond Mountains

Project Map:





Cooperative Sagebrush Steppe Restoration Initiative

Thomas W. Esgate, Project Director
PO Box 816
Susanville, California 96130
530-310-0146
twesgate@sbcglobal.net

The *Cooperative Sagebrush Steppe Restoration Initiative* is an informal partnership that began in 2004, with the principle partners being the Pit Resource Conservation District, Lassen County Fire Safe Council, Susanville Indian Rancheria and University of California Cooperative Extension, Lassen County. We entered into a formal Memo of Understanding in 2007 with Lassen and Modoc Counties; CalFire; North Cal-Neva Resource Conservation and Development Council; United States Department of Interior, Bureau of Land Management; United States Department of Agriculture, US Forest Service. We partner with almost every conceivable agency to plan and implement sagebrush steppe and eastside pine restoration projects that are mitigating the impacts of invasive western juniper (*Juniperus occidentalis*).

Our projects to date have restored over 14,000 acres of critical wildlife habitat and watershed. The Lassen County Resource Advisory Committee has been a solid partner that has funded our administrative needs over the past three years. 2012 promises to be another successful year with numerous projects underway and more projects being planned for the future.

2012 Lassen County CWPP Work Plan

WUI Area: Ash Valley

Funding: Planning/Not Funded

2012 Planning

Number of Acres: 1900

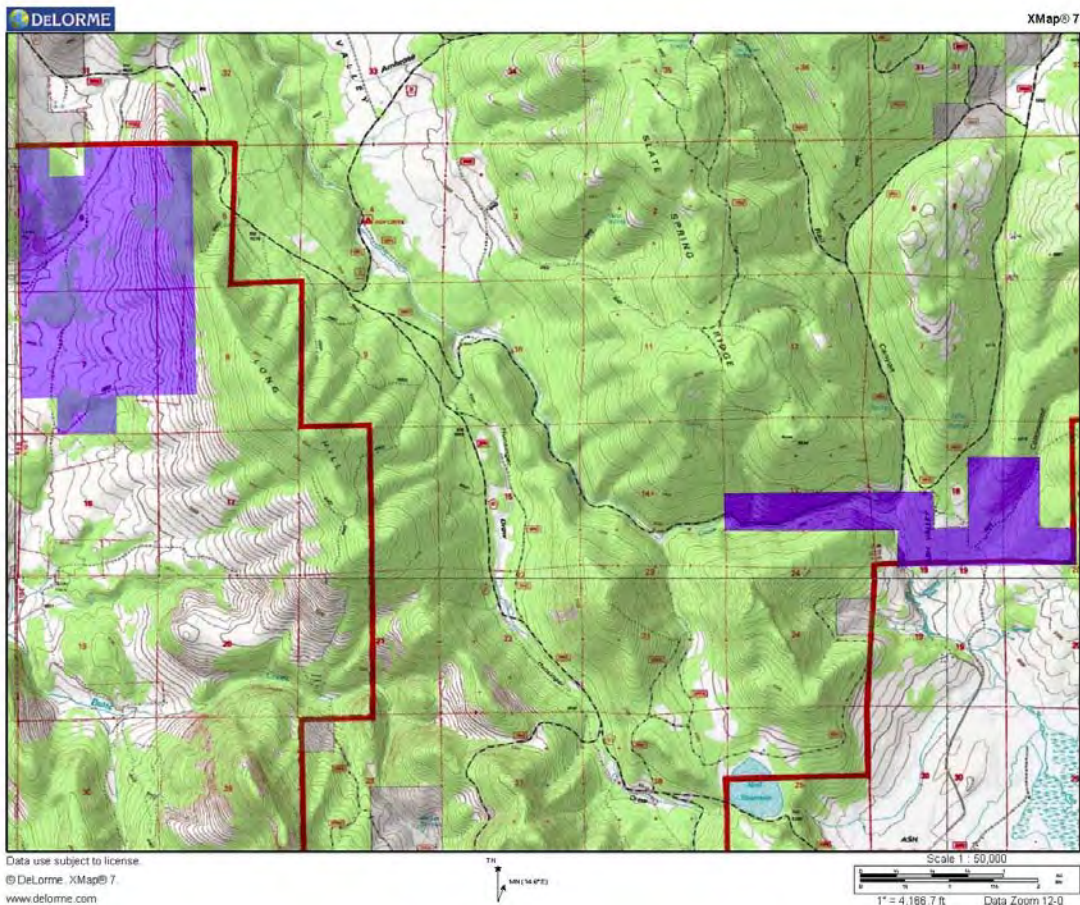
Agency or Agencies: CSSRI

Project Name: Ash Watershed Restoration Project

Project Coordinates: N41.1435 W120.8013

Summary of Project: CSSRI will continue planning with the Modoc National Forest (MDF) on a collaborative fuels treatment project west and north of the Ash Valley Community. MDF will be the lead for USFS land and LCFSC will be the lead for private land within the project area. It is anticipated CSSRI will be asking for assistance from CFSC, CalFire, NRCS and USFS with funding.

Project Map:



2012 Lassen County CWPP Work Plan

WUI Area: Ash Valley & DFPZ

Funding: Partially Funded

2012 Implementation

Number of Acres: 5500

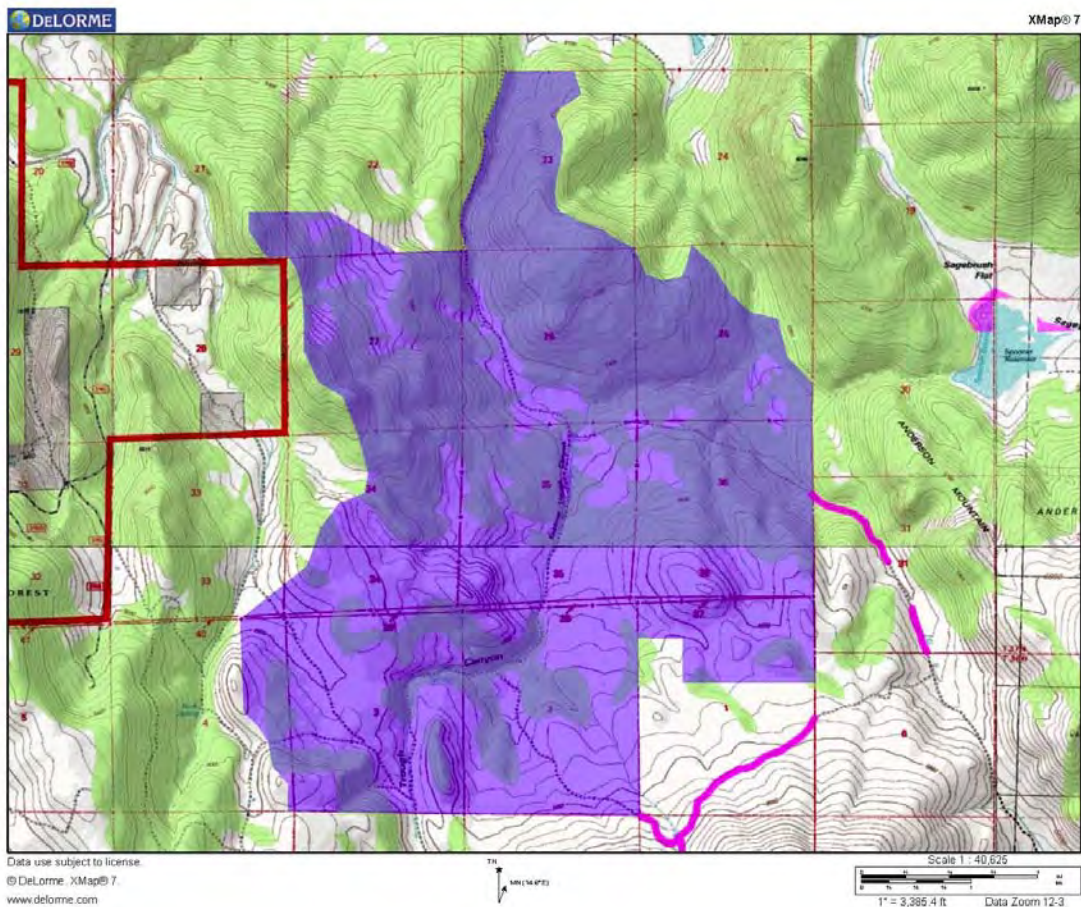
Agency or Agencies: CSSRI, CalFire

Project Name: Ash Valley III Watershed Restoration Project

Project Coordinates: N41.0047 W120.6750

Summary of Project: CSSRI is implementing this watershed restoration project on private and BLM managed land. BLM completed NEPA in 2011. Partial funding has been obtained from Lassen RAC, NRCS, SNC, USFWS and private landowner contributions. Project connects the BLM South Ash Valley, CSSRI Ash Valley I, II & IV and the CSSRI South Knob projects. Work consists of the removal of invasive juniper through biomass utilization in an effort to reduce hazardous fuel loads and restore the watershed and wildlife habitat. 550 acres were completed in 2011. We expect that 1,000 acres will be treated in 2012 through NRCS, SNC, and USFWS funding. An ongoing SNC funded water monitoring project is also part of the project. CalFire Conservation Crews are assisting with hand treatments.

Project Map:



2012 Lassen County CWPP Work Plan

WUI Area: Madeline & DFPZ

Funding: Planning/Not Funded

2012 Planning

Number of Acres: 2554

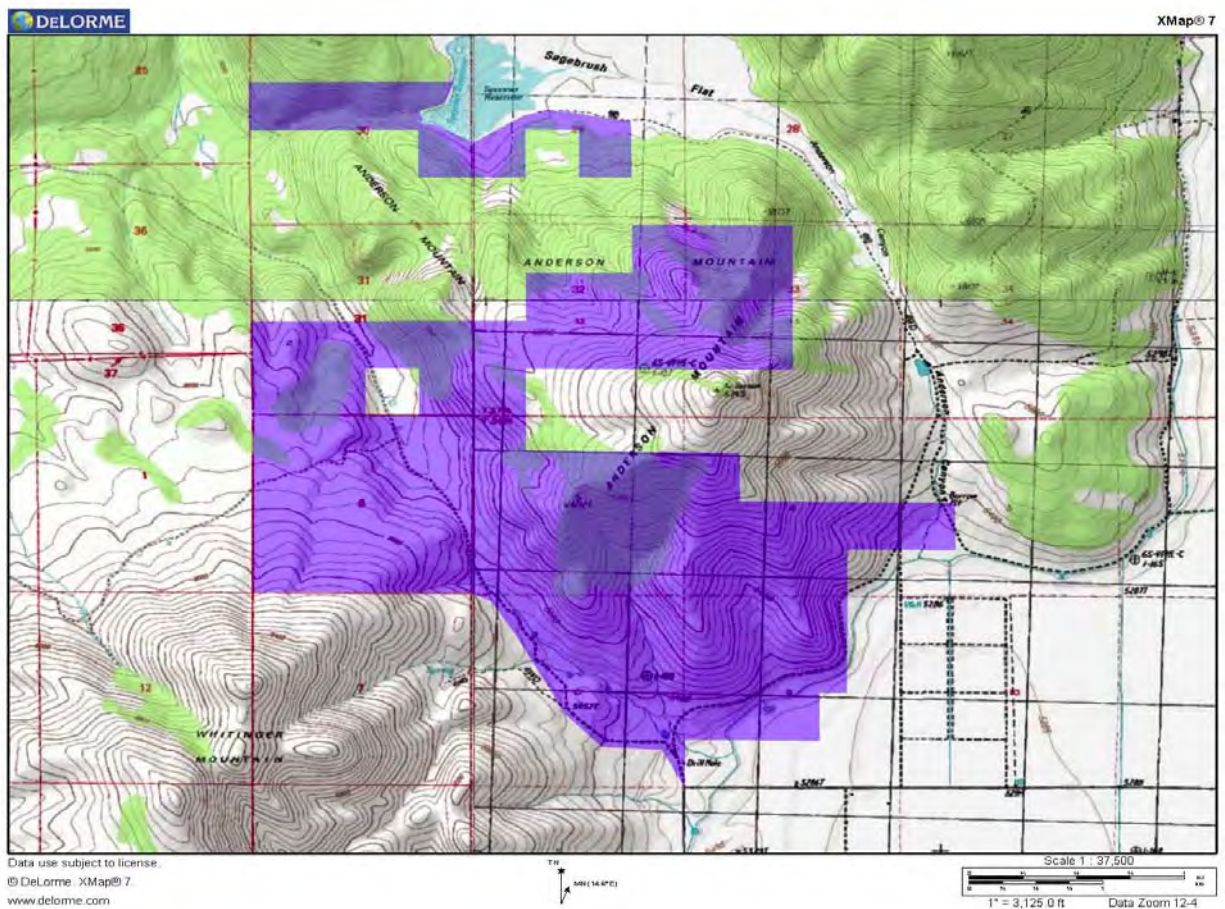
Agency or Agencies: CSSRI

Project Name: Ash Valley IV Watershed Restoration Project

Project Coordinates: N40.9793 W120.6119

Summary of Project: CSSRI, through its partners, will continue to make applications with various agencies to fund treatments on private lands. Project connects the BLM South Ash Valley, CSSRI Ash Valley I, II, III and the CSSRI South Knob projects. Work will consist of removal of invasive juniper through biomass utilization in an effort to reduce hazardous fuel loads and restore the watershed and wildlife habitat. Project will be implemented by the Cooperative Sagebrush Steppe Restoration Initiative partnership and private landowners with the assistance of our funding partners

Project Map:



2012 Lassen County CWPP Work Plan

WUI Area: Various In NW Lassen County

Funding: Partially Funded

2012 Implementation

Number of Acres:

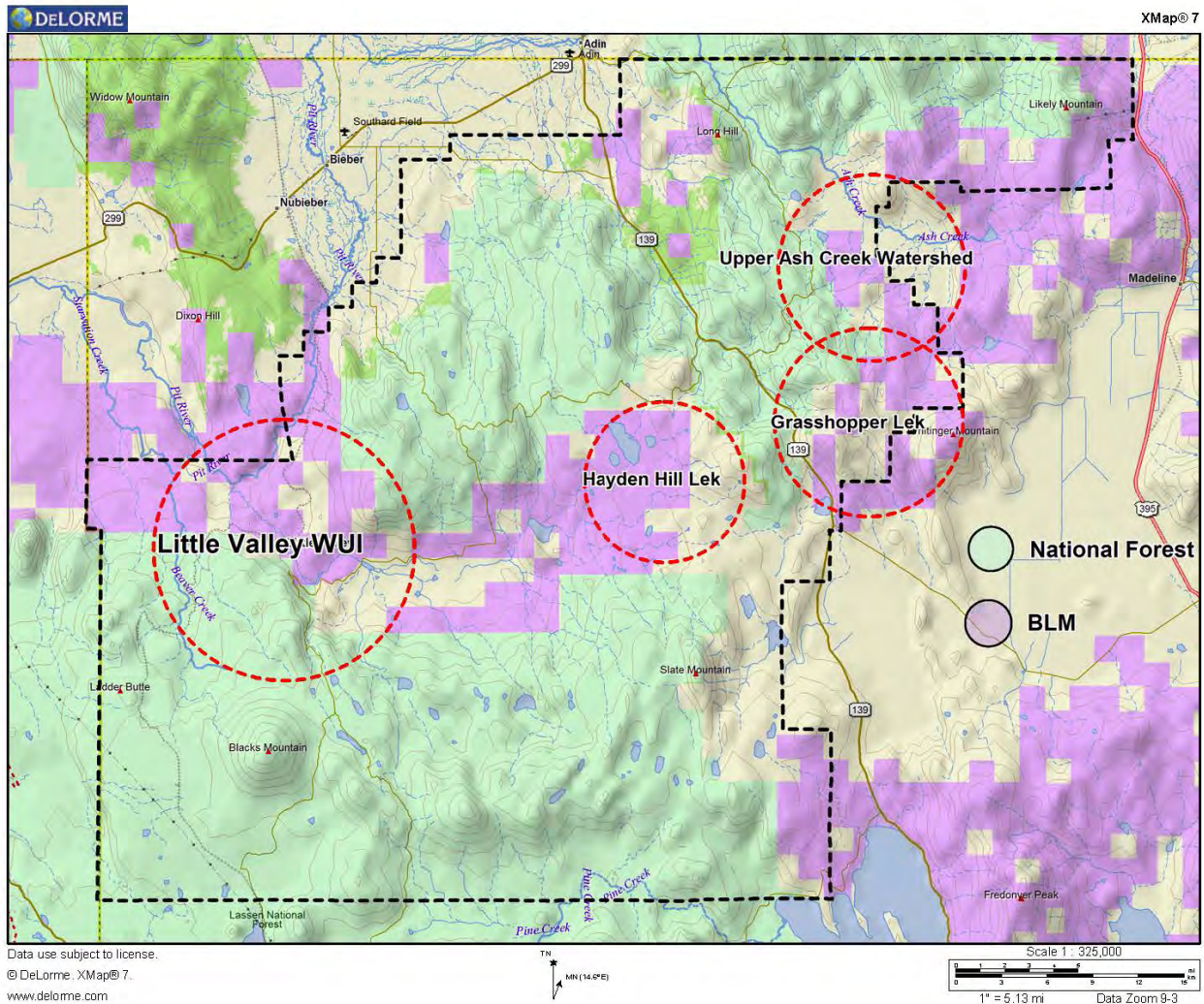
Agency or Agencies: PRCD, LCFSC, SIR, NRCS

Project Name: Cooperative Conservation Partnership Initiative

Project Coordinates: Various

Summary of Project: CSSRI and NRCS will be assisting private landowners, and potentially USFS and BLM, with planning and funding to implement landscape scale restoration treatments targeting the removal of invasive western juniper. NRCS is the lead for NRCS/CCPI funded projects and CSSRI will be the lead for CSSRI leveraged/funded projects. Below are the focus areas for 2012.

Project Map:



2012 Lassen County CWPP Work Plan

WUI Area: Hayden Hill DFPZ

Funding: Partially Funded

2012 Implementation

Number of Acres: 1600

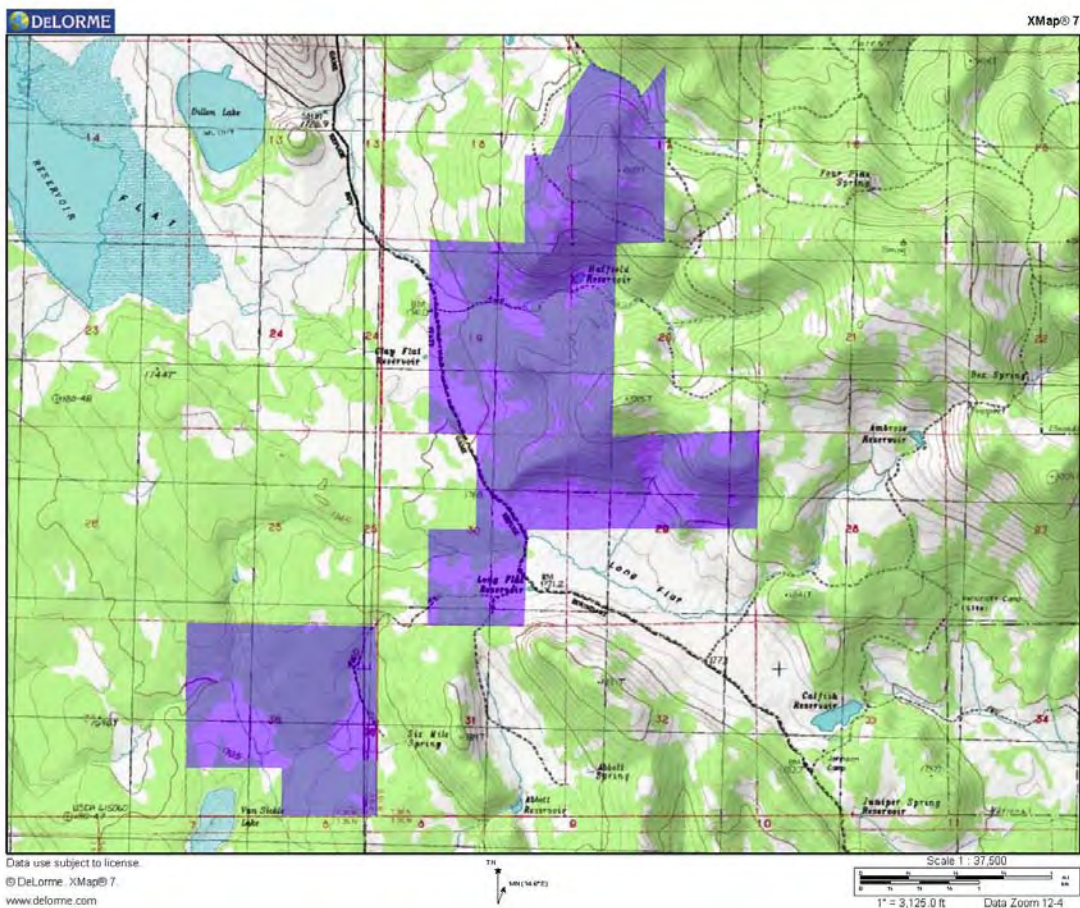
Agency or Agencies: CSSRI, CalFire

Project Name: Hayden Hill Watershed Restoration Projects

Project Coordinates: N40.9339 W120.8553

Summary of Project: CSSRI is assisting private landowners in the Hayden Hill area with watershed and wildlife habitat restoration treatments. A portion of the project is underway and being funded by NRCS and private landowner contributions. CalFire is assisting with hand treatments. Project connects with BLM projects. Work consists of the removal of invasive juniper through biomass utilization in an effort to reduce hazardous fuel loads and restore the watershed and wildlife habitat.

Project Map:



2012 Lassen County CWPP Work Plan

WUI Area: McBride Springs DFPZ

Funding: Planning/Not Funded

2012 Planning

Number of Acres: 743

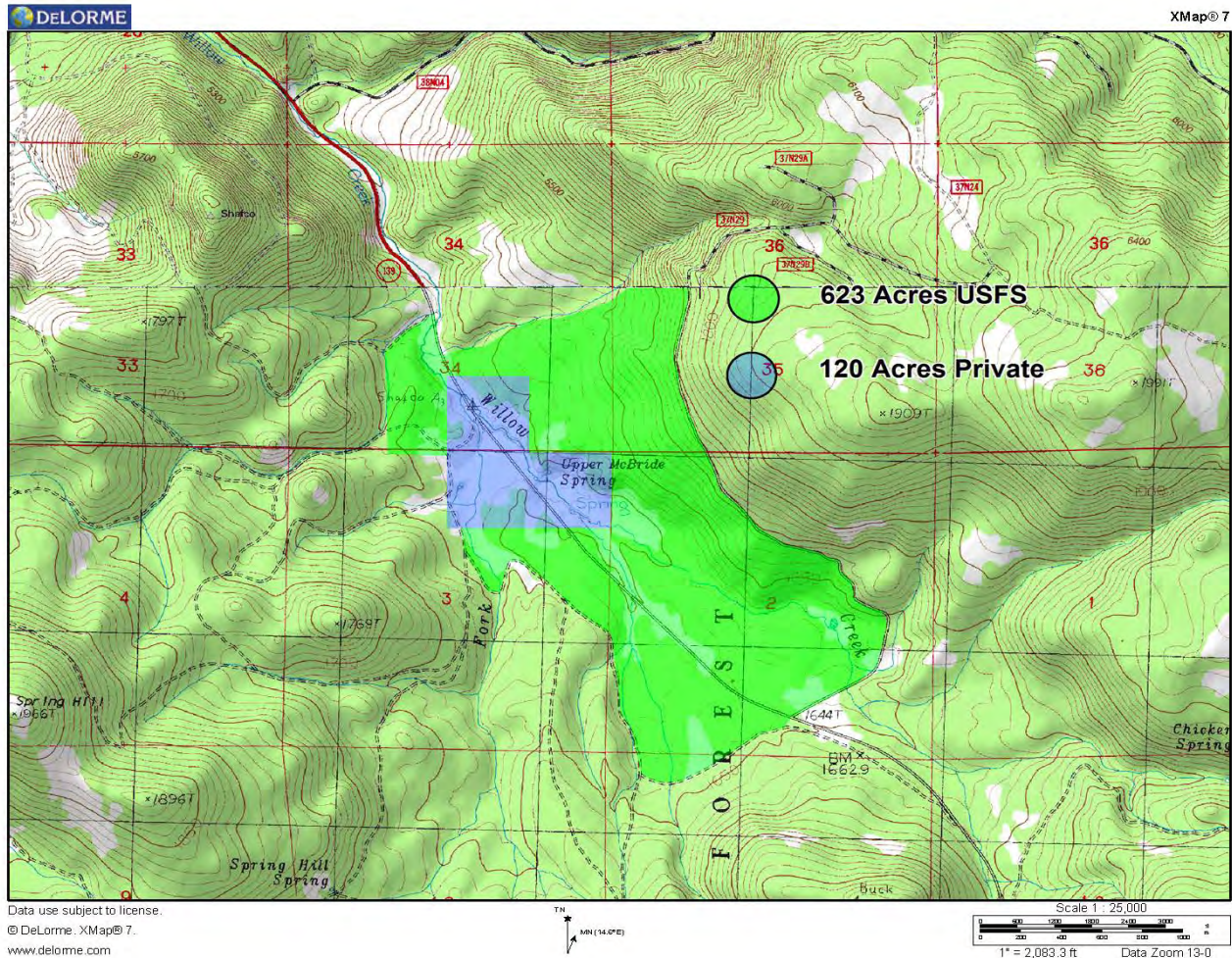
Agency or Agencies: CSSRI, MDF

Project Name: McBride Springs Upland Restoration

Project Coordinates: N40.9919 W120.7978

Summary of Project: CSSRI, through its partners LCFSC & PRCD, and in cooperation with the USFS, will be making applications with various agencies to fund treatments on private and USFS lands. NEPA and CEQA clearance has been underway for some time. In 2011 stream channel restoration work was completed. Planning work has been funded by SNC and CSSRI. Project would restore an important watershed along the Highway 139 corridor. Invasive juniper would be removed through biomass utilization in an effort to reduce hazardous fuel loads and restore the watershed and wildlife habitat. Eastside pine thinning could also occur. Project would be implemented by the Cooperative Sagebrush Steppe Restoration Initiative partnership, with the Pit Resource Conservation District as the lead, and funding partners.

Project Map:



2012 Lassen County CWPP Work Plan

WUI Area: Grasshopper DFPZ

Funding: Partially Funded

2012 Implementation

Number of Acres: 2714

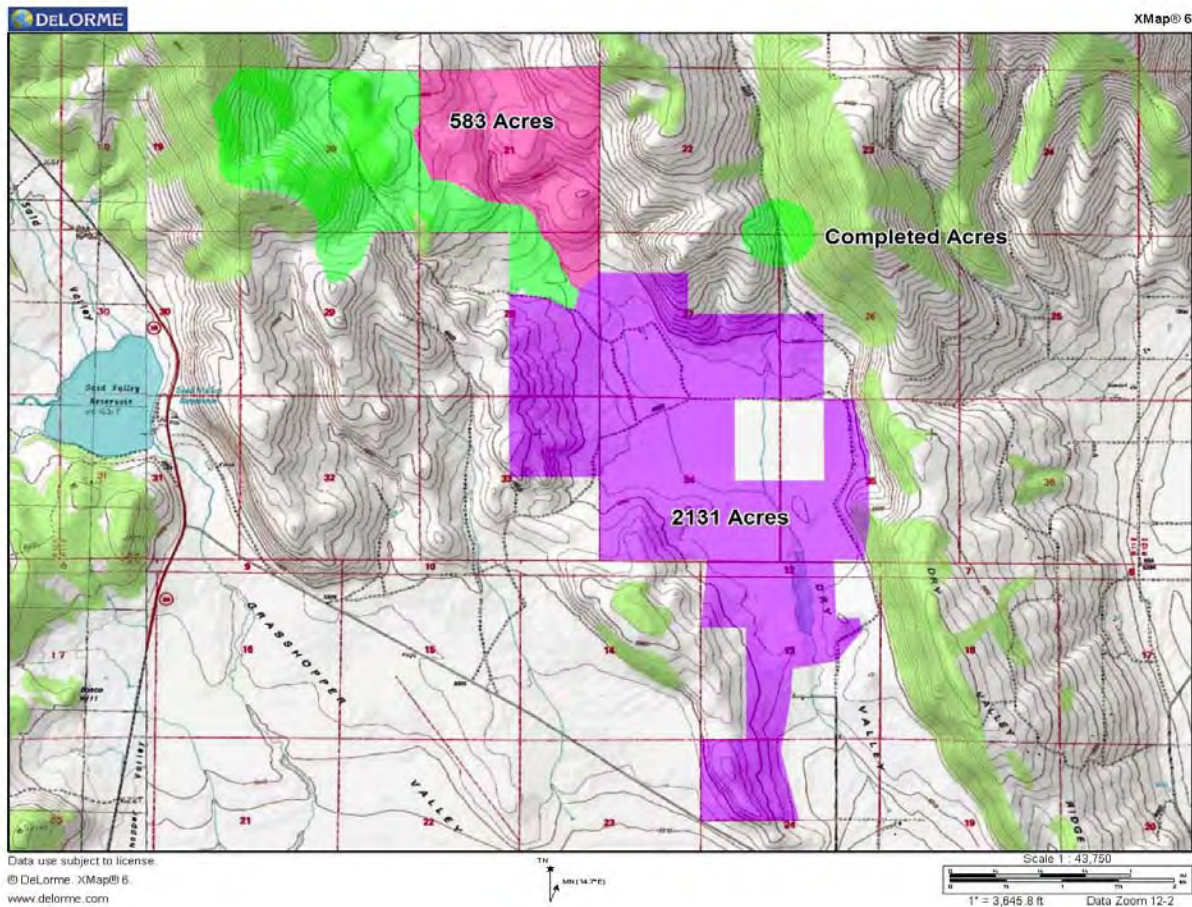
Agency or Agencies: CSSRI

Project Name: McClelland Watershed/Wildlife Habitat Restoration Project

Project Coordinates: N40.9199 W120.7020

Summary of Project: CSSRI, through its partners PRCD, LCFSC & SIR, is making applications with various agencies to fund treatments on McClelland Ranch private lands in North Grasshopper Valley. A 550 acre portion of the project is being funded by NRCS and private landowner contributions. Project connects with the CSSRI South Knob projects. Work consists of the removal of invasive juniper through biomass utilization in an effort to reduce hazardous fuel loads and restore the watershed and wildlife habitat. CalFire Conservation Crews are assisting with hand treatments.

Project Map:



2012 Lassen County CWPP Work Plan

WUI Area: Janesville/Milford

Funding: Partially Funded

2012 Implementation

Number of Acres: 160

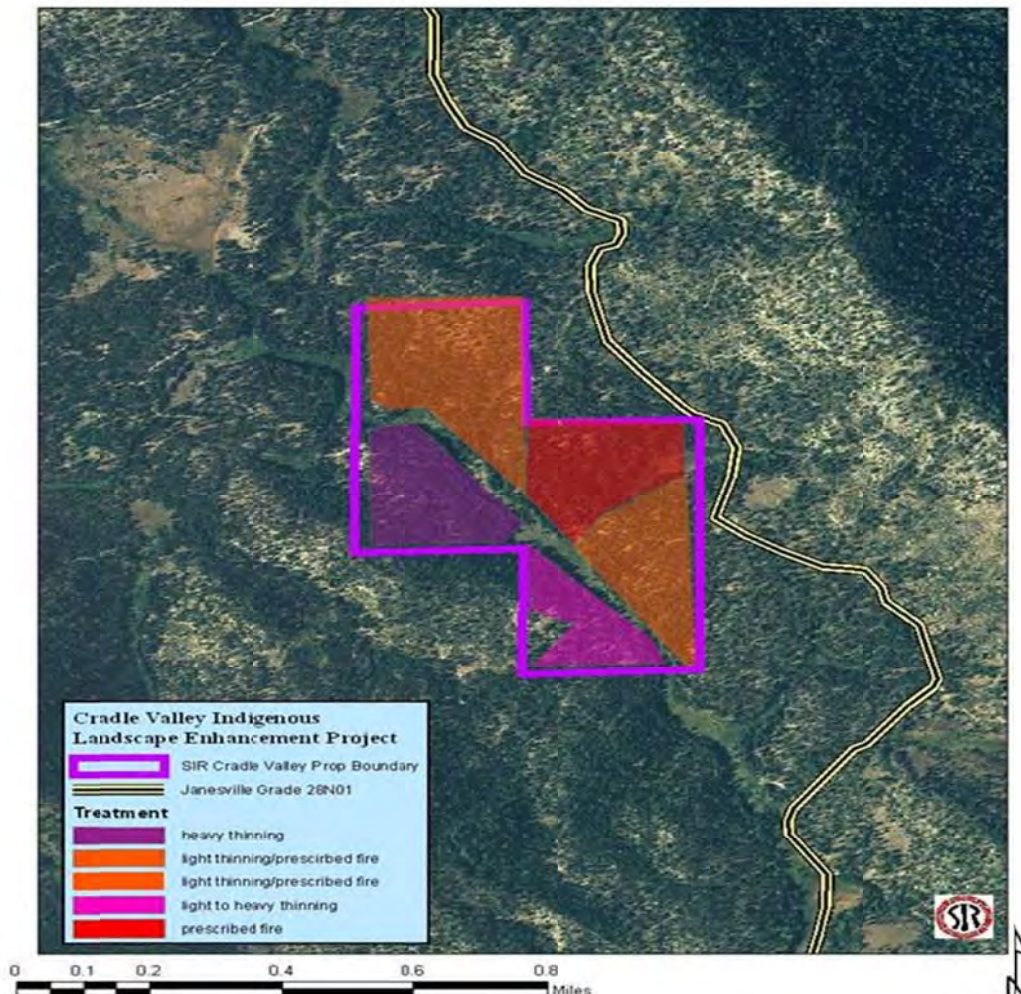
Agency or Agencies: Susanville Indian Rancheria

Project Name: Cradle Valley Indigenous Landscape Enhancement Project

Project Coordinates: 40.226 N 120.50W

Summary of Project: This 160 acre SIR property is located in Plumas County, but is right on the Lassen/Plumas County border. It is within the WUI for the Janesville and Milford communities. The property is completely surrounded by the Plumas National Forest (PNF). PNF lands on all sides are in need of thinning to improve forest health and reduce unnaturally high fuel loads. The Janesville Grade road which provides access to Antelope Lake from Hwy 395 is immediately adjacent to the property on the east side, providing a potential ignition source. The SIR has hand treated 80-acres of the property on the north and northeast sides of the property. The SIR plans to treat the remaining 80-acres on the west side. These portions of the property are the hardest to access, have heavy fuel accumulation, and are the most important to protect due to the prevailing southwest winds in the area.

Project Map:



2012 Lassen County CWPP Work Plan

WUI Area: Susanville

Funding: Partially Funded

2012 Implementation

Number of Acres: 995

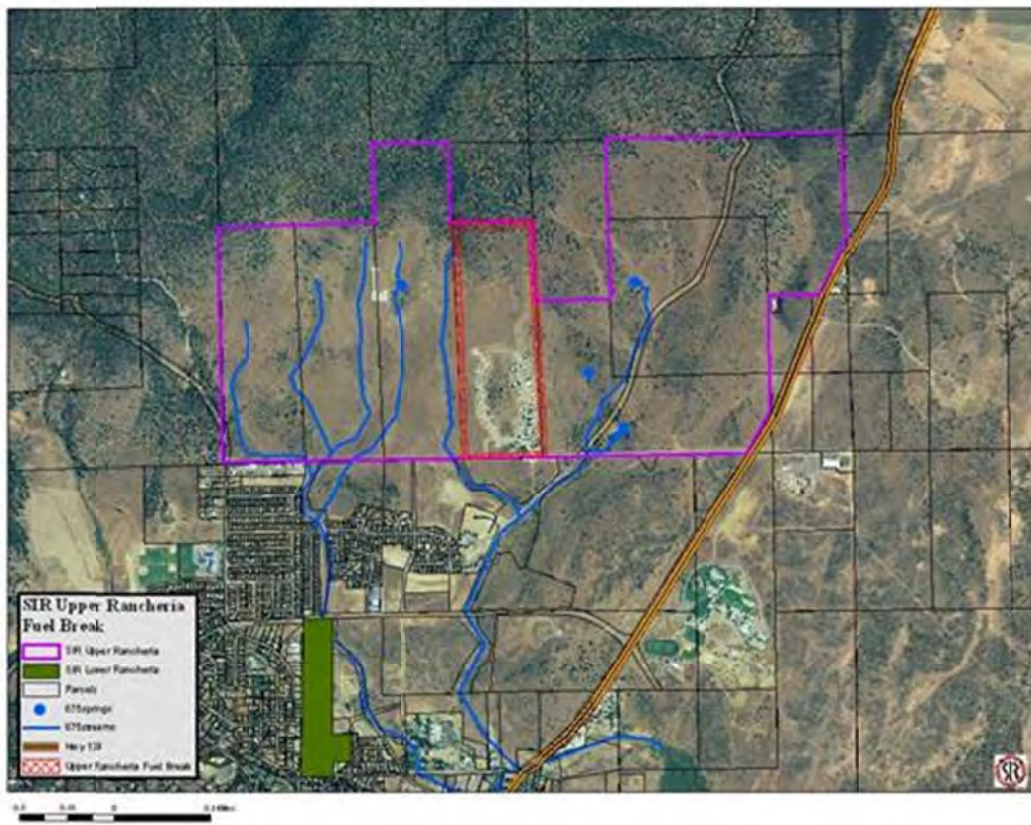
Agency or Agencies: Susanville Indian Rancheria

Project Name: Upper Rancheria Wildland Urban Interface (WUI) Project

Project Coordinates: 40.446 N 120.643 W

Summary of Project: SIR is currently constructing a one-chain (66') wide fuel break around the entire 995 acre Upper Rancheria, approximately 6.5 miles. In addition the SIR has applied for BIA funds to conduct fuel reduction activities on 50 acres around the 52 homes on the Upper Rancheria. The SIR is interested in expanding the scope of this project and including Lassen County lands to the west and BLM lands to the east. This would encompass the majority of the northern WUI for the City of Susanville.

Project Map:





Bureau of Land Management Alturas Field Office Fuels Management Strategy.

Reducing the risk of catastrophic wildfire is a priority for the Alturas Field Office. We are working collaboratively with private and other public agencies to implement fuels projects that will help minimize the threat of wildfire. Life and property protection are of the utmost importance to the Alturas Field Office. Conducting fuels management projects in the WUI and beyond is allowing us to further this effort. A secondary ecological benefit achieved by these projects is the restoration of the sage steppe ecosystem by removing expansive western juniper populations. Working together with our partners, we are reducing the risk of wildfire while at the same time improving the ecological condition of our public lands.

+++++

2012 Lassen County CWPP Work Plan

WUI Area: Ash Valley

Funding: Planning/Not Funded

2012 Planning

Number of Acres: 5000

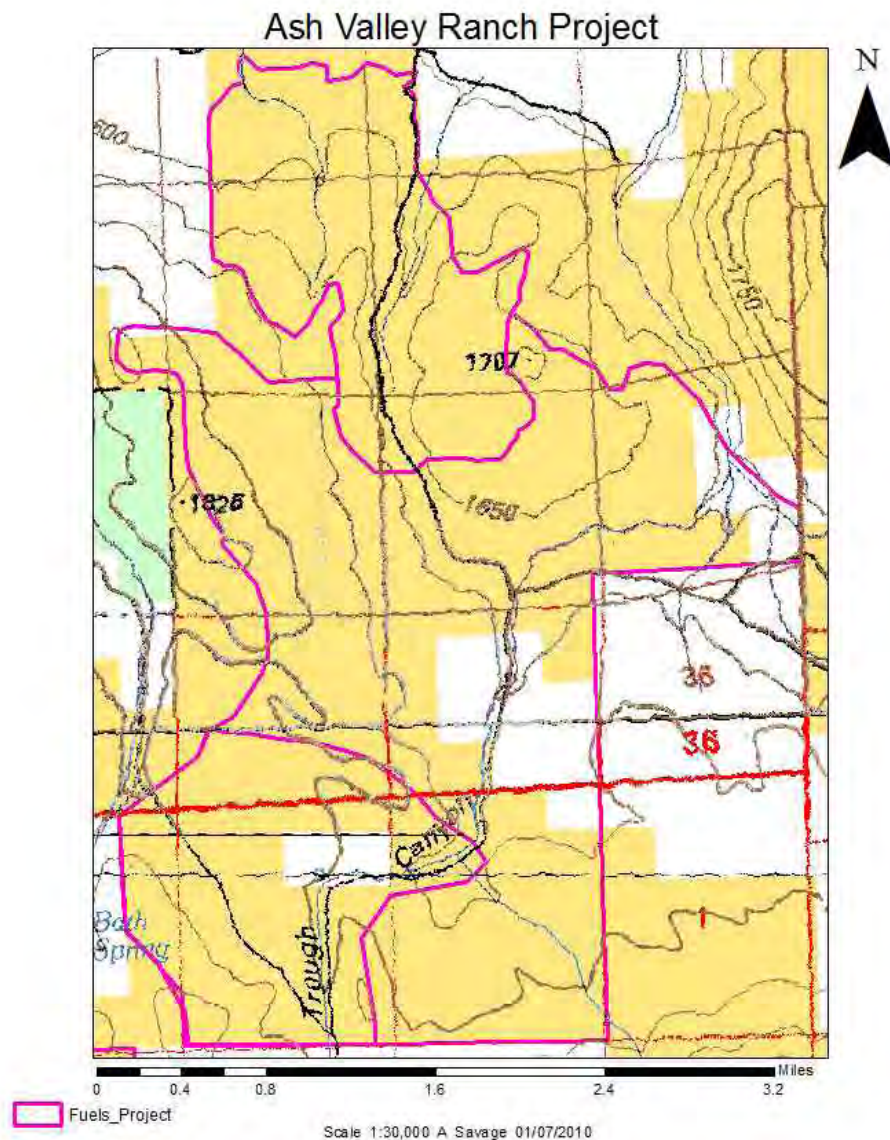
Agency or Agencies: Alturas BLM

Project Name: Ash Valley Ranch Juniper Reduction

Project Coordinates: N40.9999 W120.6851

Summary of Project: Increased Western Juniper density in the area is leading to a loss of understory and ecosystem diversity. The Lassen Fire Safe Council has approached BLM to treat the area to coincide with private, Forest Service, and previous BLM treatments in the area. BLM has completed the NEPA and plans are underway to implement a 500 acre biomass project.

Project Map:



2012 Lassen County CWPP Work Plan

WUI Area: Madeline

Funding: Funded

2012 Implementation

Number of Acres: 2100

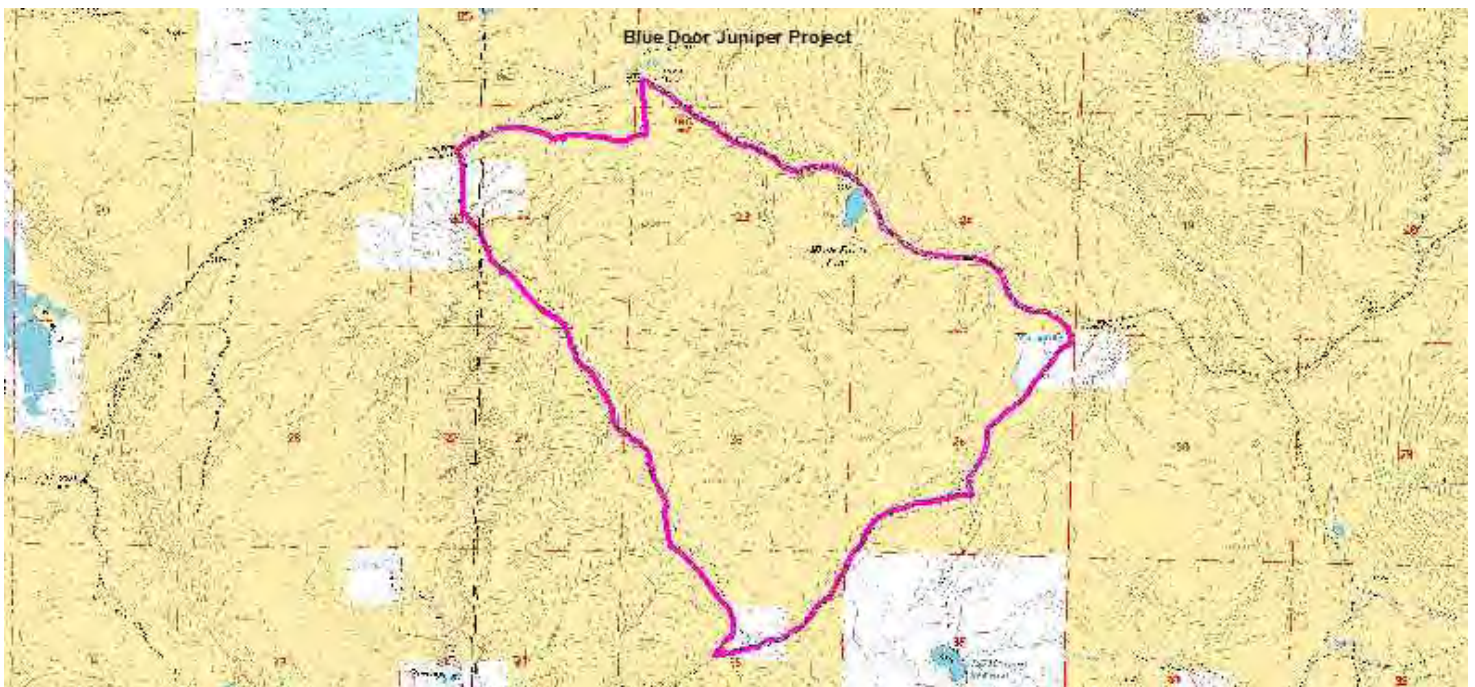
Agency or Agencies: Alturas BLM

Project Name: Blue Door Juniper Reduction

Project Coordinates: N41.0604 W120.3457

Summary of Project: Western Juniper has encroached over a vast area in Northeast California. This encroachment has contributed to degraded watersheds, degraded wildlife habitat, reduction of livestock forage, and reduction of bio-diversity and increased the hazard of catastrophic wildfire. By reducing areas of Western Juniper stands by hand and mechanical treatments, the current ecological trend can be slowed or stopped, allowing recovery of degraded natural resources. The project area is 2100 acres with over 1100 acres treated to date..

Project Map:



2012 Lassen County CWPP Work Plan

WUI Area: North Lassen

Funding: Partially Funded

2012 Implementation

Number of Acres: 1200

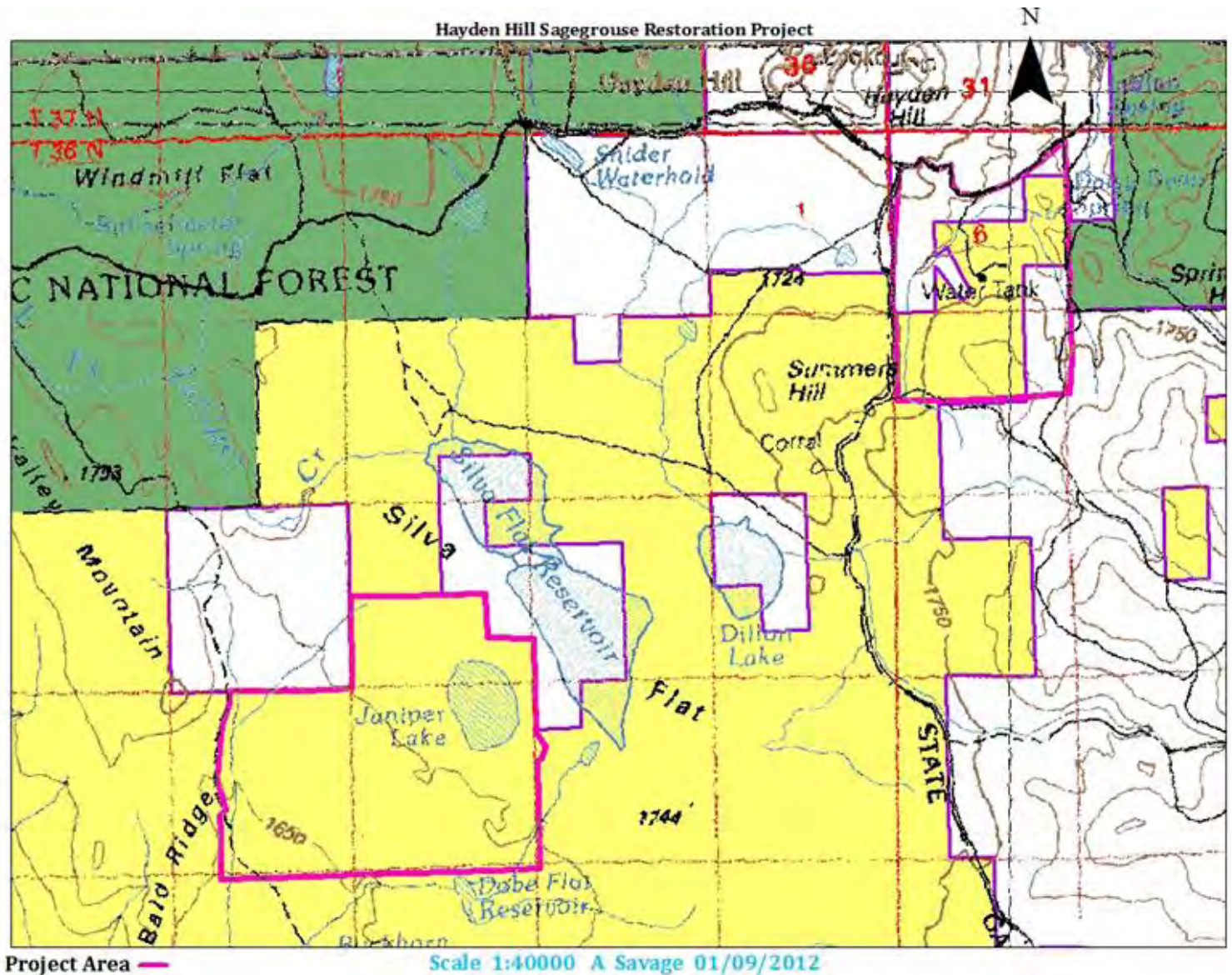
Agency or Agencies: Alturas BLM

Project Name: Hayden Hill Sagegrouse Restoration

Project Coordinates: N40.9453 W120.9317

Summary of Project: Hand cutting and Piling of Western Juniper to enhance Sagegrouse habitat and reduce hazardous fuel loadings. Piles would be burned in Fall/Spring/Winter months.

Project Map:



2012 Lassen County CWPP Work Plan

WUI Area: Ash Valley

Funding: Funded

2012 Implementation

Number of Acres: 750

Agency or Agencies: Alturas BLM

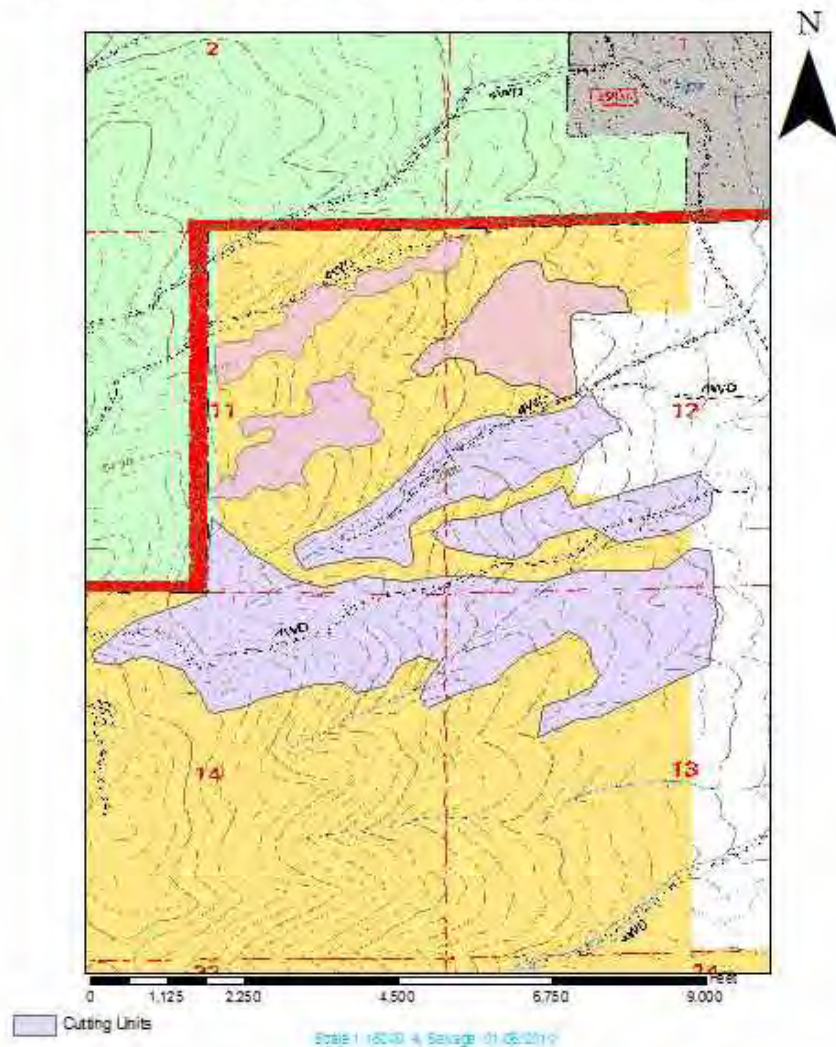
Project Name: Knox Mtn. Timber Sale

Project Coordinates: N41.1422 W120.6688

Summary of Project: The proposed action is designed to reduce the existing fire hazard. The project area is 405 acres and cruised at 950,000 board feet. The pine component will be enhanced by pre-commercially thinning areas with advanced conifer regeneration, and commercially thinning intermediate, co-dominant and dominate trees that are showing signs of stress or overcrowding. Within the proposed treatment area white fir will be removed when in the vicinity of pine to allow for pine regeneration. Juniper reduction and biomass was carried out on 300 acres. Project is 95% complete.

Project Map:

Knox MTN. Timber Sale 405 Acres, T38N R11E Sec. 11,12,13,14



2012 Lassen County CWPP Work Plan

WUI Area: Madeline

Funding: Partially Funded

2012 Implementation

Number of Acres: 1000

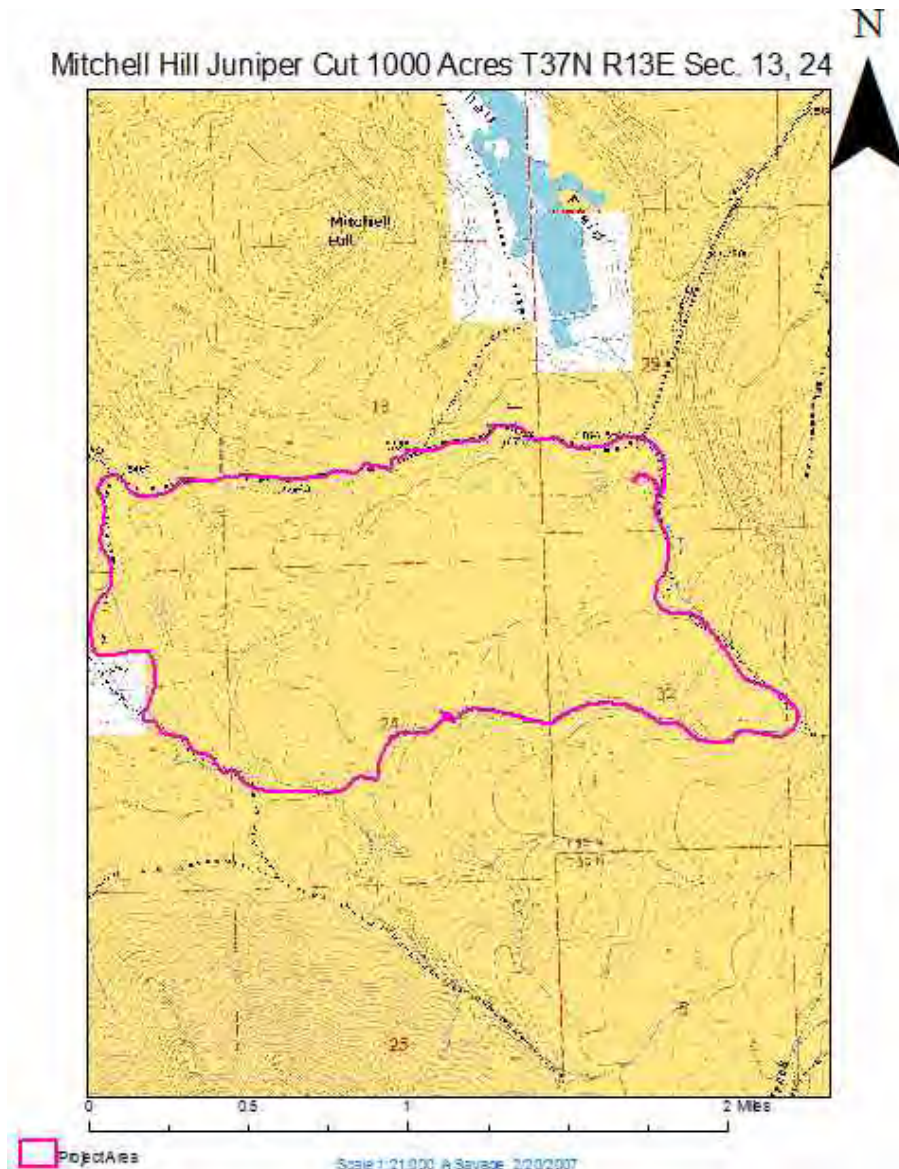
Agency or Agencies: Alturas BLM

Project Name: Mitchell Hill Juniper Reduction

Project Coordinates: N41.0342 W120.4243

Summary of Project: : Western Juniper has encroached over a vast area in Northeast California. This encroachment has contributed to degraded watersheds, degraded wildlife habitat, reduction of livestock forage, and reduction of bio-diversity and increased the hazard of catastrophic wildfire. By reducing areas of Western Juniper stands by mechanical and hand treatments, the current ecological trend can be slowed or stopped, allowing recovery of degraded natural resources. The project area is 1000 acres with 550 acres completed..

Project Map:



2012 Lassen County CWPP Work Plan

WUI Area: Ash Valley

Funding: Funded

2012 Implementation

Number of Acres: 750

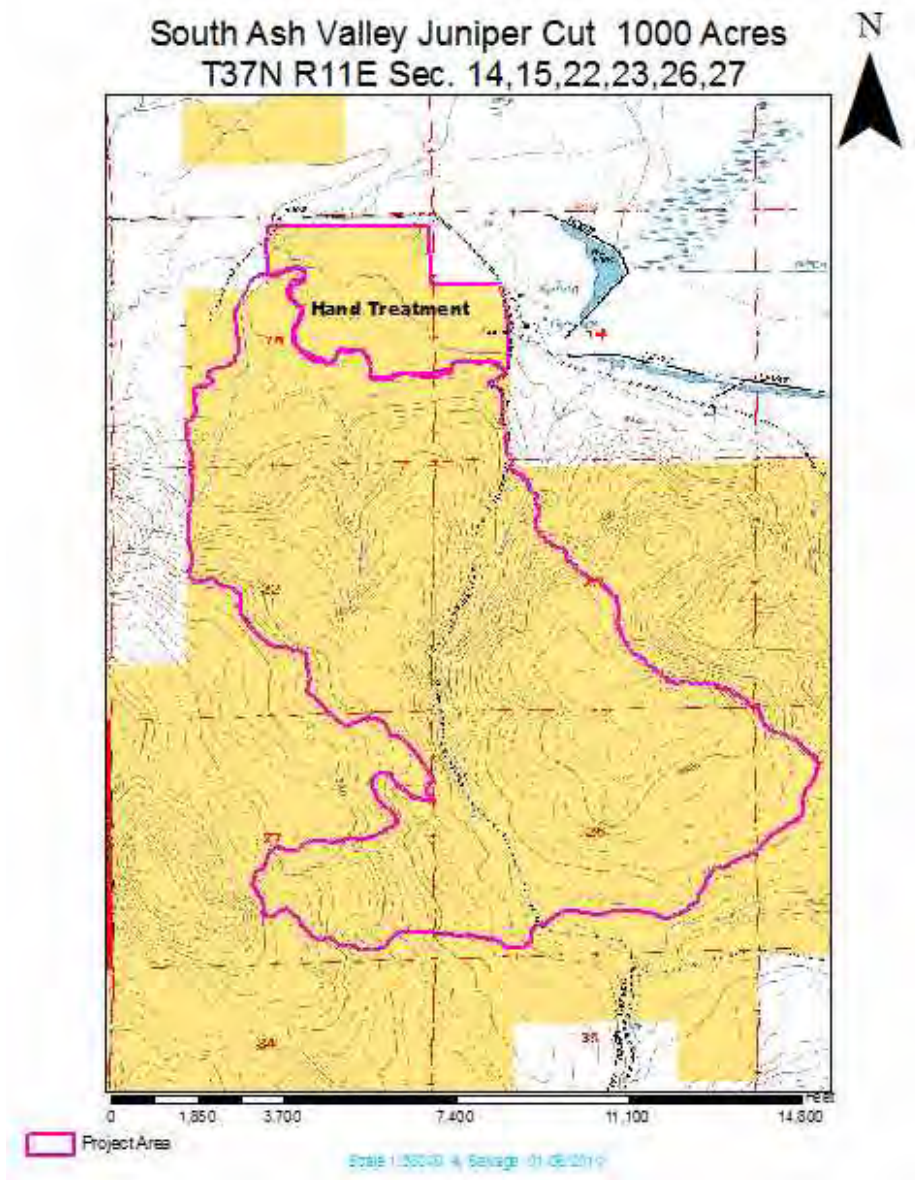
Agency or Agencies: Alturas BLM

Project Name: South Ash Valley Juniper Reduction

Project Coordinates: N41.0304 W120.6831

Summary of Project: Juniper density in the area is leading to a loss of understory and ecosystem diversity. The Lassen Fire Safe Council has approached BLM to treat the area to coincide with private and Forest Service treatments in the vicinity. BLM has let the contract on the 750 acre mechanical shearing and biomass. 500 acres have been completed to date. A 200 acre hand treatment of juniper was completed in 2008.

Project Map:



2012 Lassen County CWPP Work Plan

WUI Area: Madeline

Funding: Funded

2012 Implementation

Number of Acres: 2600

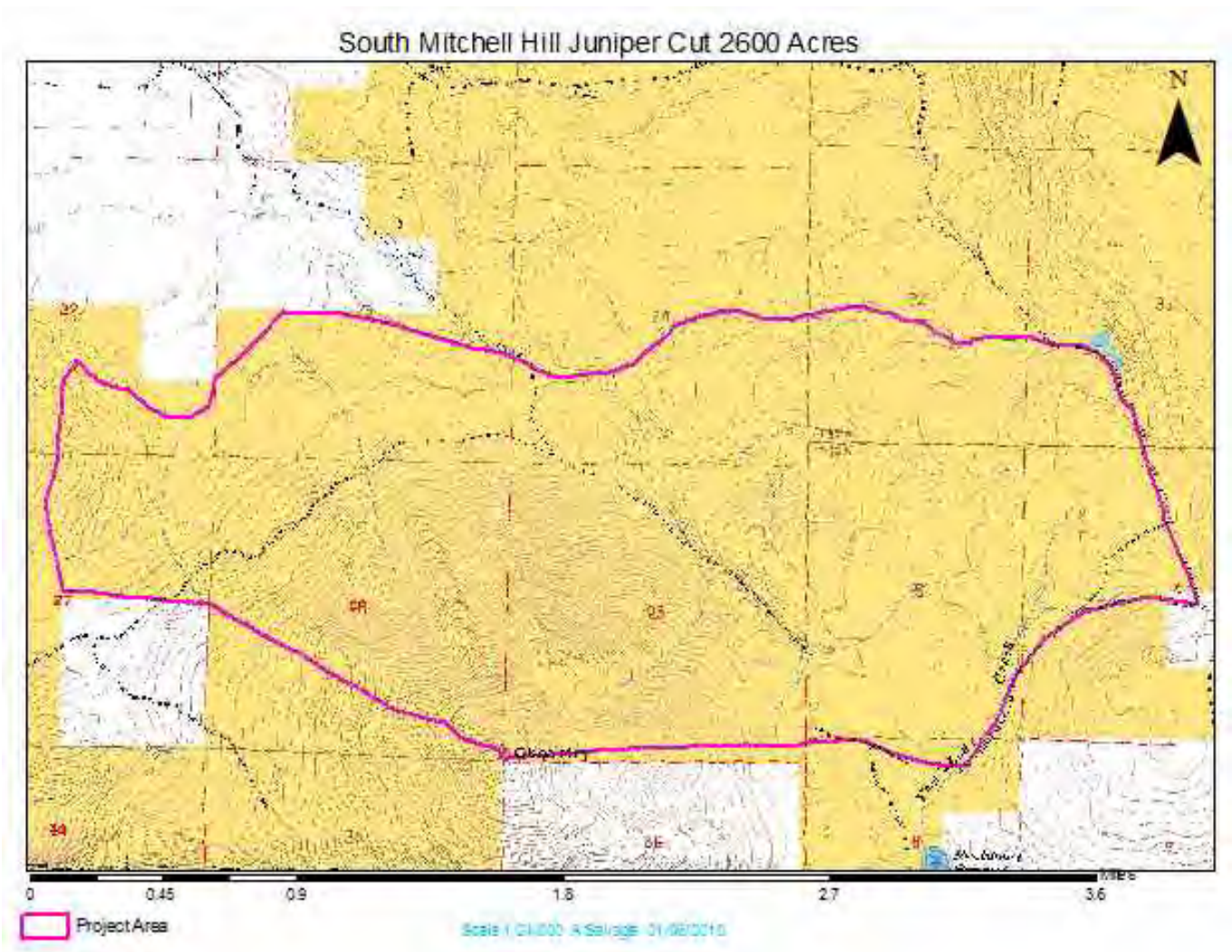
Agency or Agencies: Alturas BLM

Project Name: South Mitchell Hill Juniper Reduction

Project Coordinates: N41.0171 W120.4260

Summary of Project: Western Juniper has encroached over a vast area in Northeast California. This encroachment has contributed to degraded watersheds, degraded wildlife habitat, reduction of livestock forage, and reduction of bio-diversity and increased the hazard of catastrophic wildfire. By reducing areas of Western Juniper stands by mechanical treatments, the current ecological trend can be slowed or stopped, allowing recovery of degraded natural resources. The project area is 2600 acres with over 2000 acres treated to date..

Project Map:



2012 Lassen County CWPP Work Plan

WUI Area: Likely

Funding: Planning/Not Funded

2012 Planning

Number of Acres: 2000

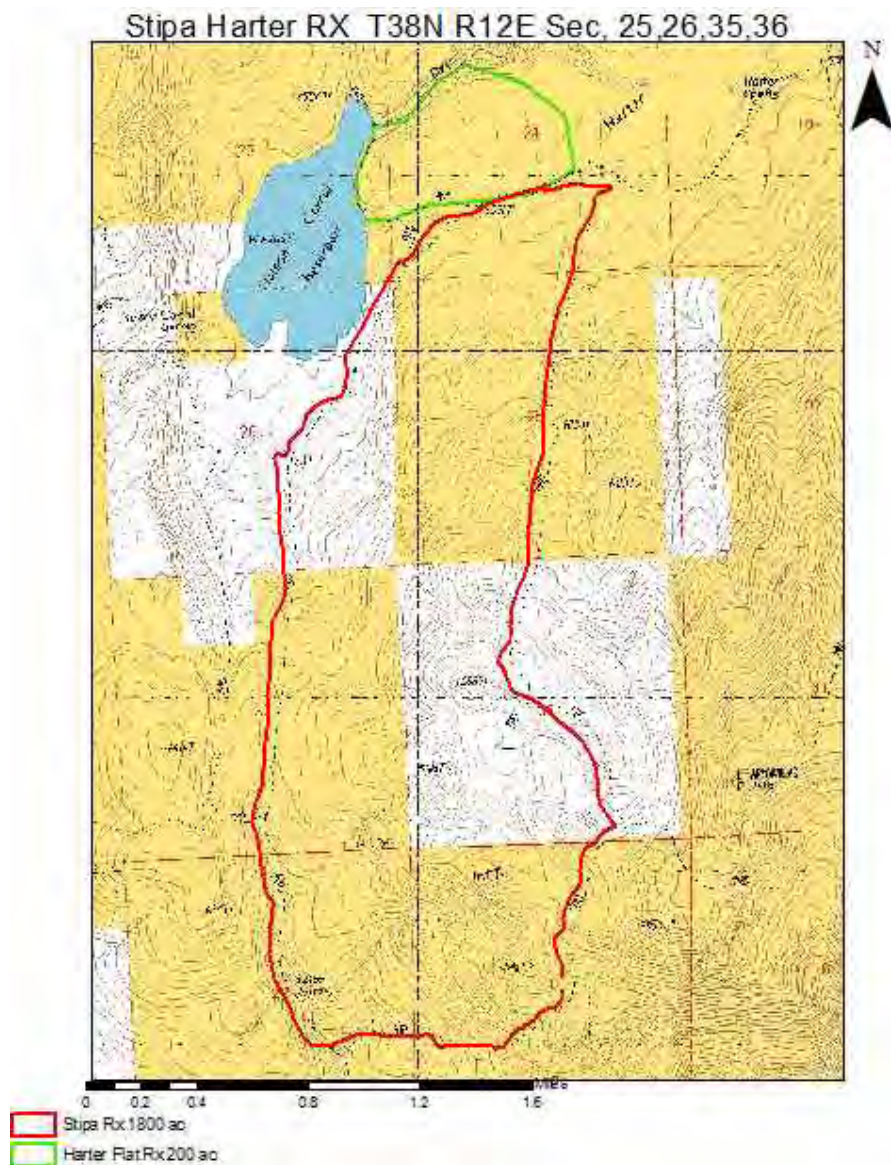
Agency or Agencies: Alturas BLM

Project Name: Stipa/Harter RX

Project Coordinates: N41.0991 W120.5447

Summary of Project: Western Juniper has encroached over a vast area in Northeast California. This encroachment has contributed to degraded watersheds, degraded wildlife habitat, reduction of livestock forage, and reduction of bio-diversity and increased the hazard of catastrophic wildfire. By reducing areas of Western Juniper stands by reintroducing fire into the ecosystem, the current ecological trend can be slowed or stopped, allowing recovery of degraded natural resources. The project area is 2000 acres.

Project Map:



2012 Lassen County CWPP Work Plan

WUI Area: Lassen/Day Bench

Funding: Funded

2012 Implementation

Number of Acres: 124

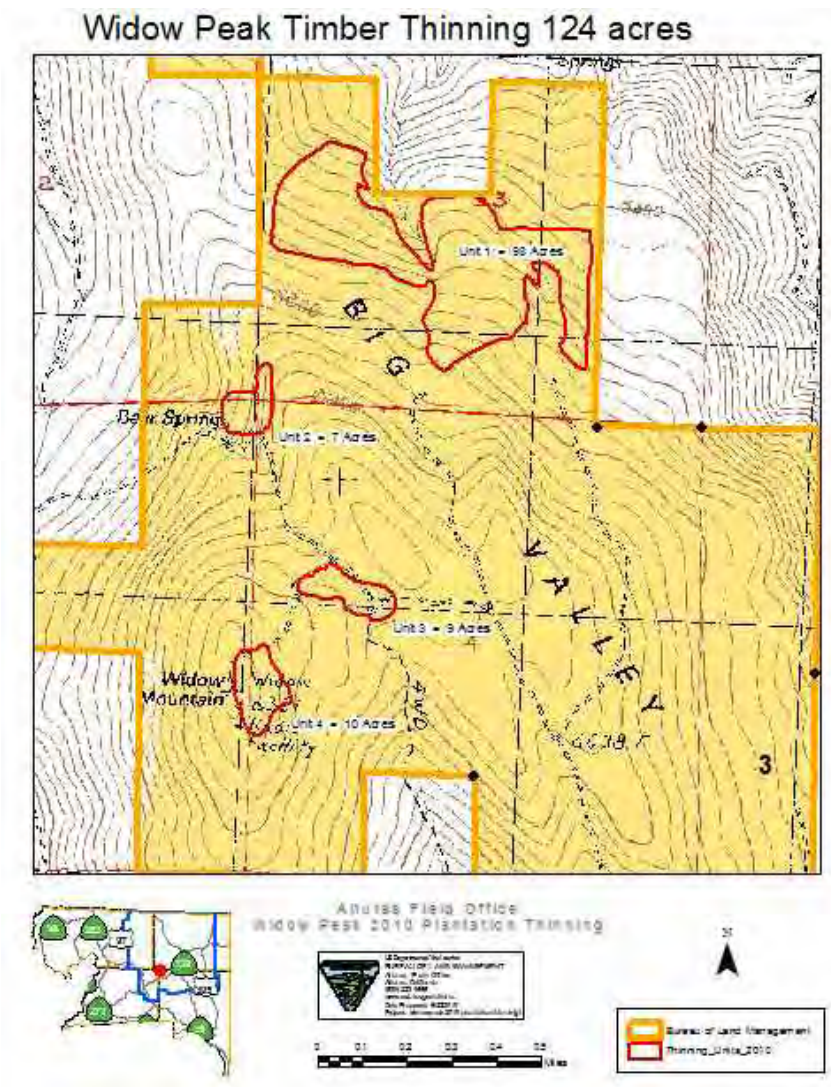
Agency or Agencies: Alturas BLM

Project Name: Widow Peak Thinning

Project Coordinates: N41.1735 W121.2890

Summary of Project: The proposed action is designed to reduce the existing fire hazard, thin advanced conifer regeneration and plantations, and commercial thin areas of intermediate, co-dominant and dominate trees on @ 124 acres. Pre commercial size white fir within 30 to 100 ft of a healthy pine will be removed to promote pine regeneration and reduce the ladder fuels around the more fire resistant pine. Within the mixed conifer stands most of the white fir with poor form, dead tops, poor vigor or old scars will be targeted for removal. In general, within the pure stands of healthy white fir, trees over ten inch DBH will be removed to leave a spacing of 12-16 feet, leaving the larger specimens. Contract has been let.

Project Map:



2012 Lassen County CWPP Work Plan

WUI Area: Madeline

Funding: Partially Funded

2012 Implementation

Number of Acres: 100

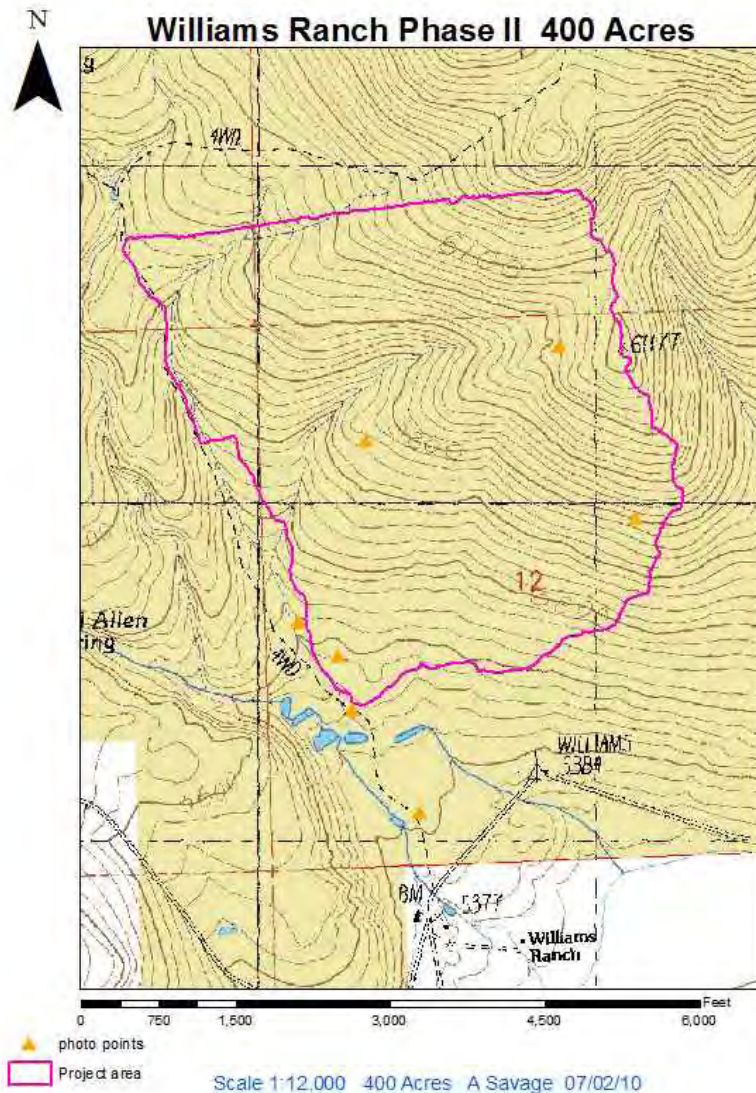
Agency or Agencies: Alturas BLM

Project Name: Williams Ranch Juniper Reduction

Project Coordinates: N41.0590 W120.5540

Summary of Project: Western Juniper has encroached over a vast area in Northeast California. This encroachment has contributed to degraded watersheds, degraded wildlife habitat, reduction of livestock forage, and reduction of bio-diversity and increased the hazard of catastrophic wildfire. By reducing areas of Western Juniper stands by hand and mechanical treatments, the current ecological trend can be slowed or stopped, allowing recovery of degraded natural resources. The project area is 400 acres with over 170 acres treated to date. Cut material will be utilized for firewood and offered up for biomass.

Project Map:



Lassen County Community Wildfire Protection Plan
BLM Eagle Lake Field Office
2012 Annual Work Plan Summary Narrative

The Eagle Lake Field Office currently has Hazardous Fuels Reduction, Ecosystem Restoration, projects planned or ongoing in Lassen County. The purpose and benefits of these projects are community and resource protection, wildlife habitat improvement, rangeland improvement and ecosystem restoration.

Shoals Creek Sage-Steppe Restoration Project. The BLM proposes to reduce high densities of western juniper within a 570 acre project area. This would serve to decrease the probability of large catastrophic wildfires and would promote the reestablishment of lower fire hazard vegetation types dominated by native shrubs, grasses and forbs thereby improving the overall ecosystem health and Sage Grouse Habitat. This project will be conducted across ownership boundaries in cooperation with Private Land Owners, NRCS and the BLM.

The **North Eagle** and **South Cleghorn** Hazardous Fuels Reduction Projects are an extension of the Stones-Bengard project with the same objective to reduce the risk of catastrophic wildfire that could threaten valuable timber resources, and Bald Eagle habitat as well as the community of Stones-Bengard. The planned treatments of these projects have also been identified in the Cleghorn Habitat Management Plan (a plan for the protection and management of a Bald Eagle nesting territory on public land.) Benefits will include community and resource protection, rangeland and bald eagle habitat improvement.

The **North Horse** and **South Grasshopper** Hazardous Fuels Reduction Projects are in areas that have been identified as Fire Regime III in a condition class of 2 and 3. Our goal is to reduce high densities of western juniper and reintroduce fire into the ecosystem. This will reduce the risk of catastrophic wildfire and restore the project areas to a more healthy and productive plant community and in the future return the Fire Regime to a condition class of 1.

The **Dodge Reservoir** Hazardous Fuels Reduction and Habitat Improvement Project's goal is to reduce high densities of western juniper in order to improve sage grouse habitat, watershed health, reduce the threat of catastrophic wildfires and to restore the project area to a more healthy and productive plant community.

Fredonyer Peak Stewardship. The BLM proposes to reduce the density of white fir and western juniper on up to 3500 acres on Fredonyer Peak (see Map). This project may be accomplished using the using the Stewardship Contracting authority. The primary objectives are to reduce the risk of high severity wildfire to the forest resources and watershed attributes, increase water yield to the Eagle Lake and Horse Lake basins, improve wildlife habitat by increasing the biodiversity of understory vegetation and primary production, and enhancing forest stand resilience to insects and disease.

Diamond Mtn. Sanitation Project. The proposed action, designed to reduce the spread of mountain pine beetle and various species of dwarf mistletoe infecting ponderosa and Jeffrey pine, will incorporate a sanitation harvest and free thinning method. The use of these two silvicultural treatments will not only reduce the spread of these pathogens but also reduce density dependent mortality of trees within this stand. The total area of the treatment is 75 acres. The harvest of infected trees will be both mechanized and hand felled. Harvest will target infected trees unless they are deemed to have wildlife value as snags. In the case of mistletoe, harvest of trees from around each wildlife tree will be done in order to reduce its spread. Additionally, the free thinning will be used to reduce tree density favoring the resilience of remaining late seral trees to insect, disease, and wildfire. Wood products will be utilized for sawlogs, biomass, and fuelwood.

Bald Hills Stewardship. The BLM proposes to reduce the density of Jeffrey pine and western juniper on northwest of Eagle Lake. The primary objectives are to reduce the risk of high severity wildfire in the naturally regenerated stand and to increase spacing between trees in the plantations. The density along the Cleghorn Road will also be reduced which will enhance its use as a fire break. The secondary benefits include improving wildlife habitat by increasing the biodiversity of understory vegetation and enhancing forest stand resilience to insects and disease. The project is proposed for late 2011 or 2012. The primary treatment method will be mechanized thinning with biomass and sawtimber removal.

2012 Lassen County CWPP Work Plan

WUI Area: Eagle Lake/Stones Landing

Funding: Funded

2012 Implementation

Number of Acres: 828

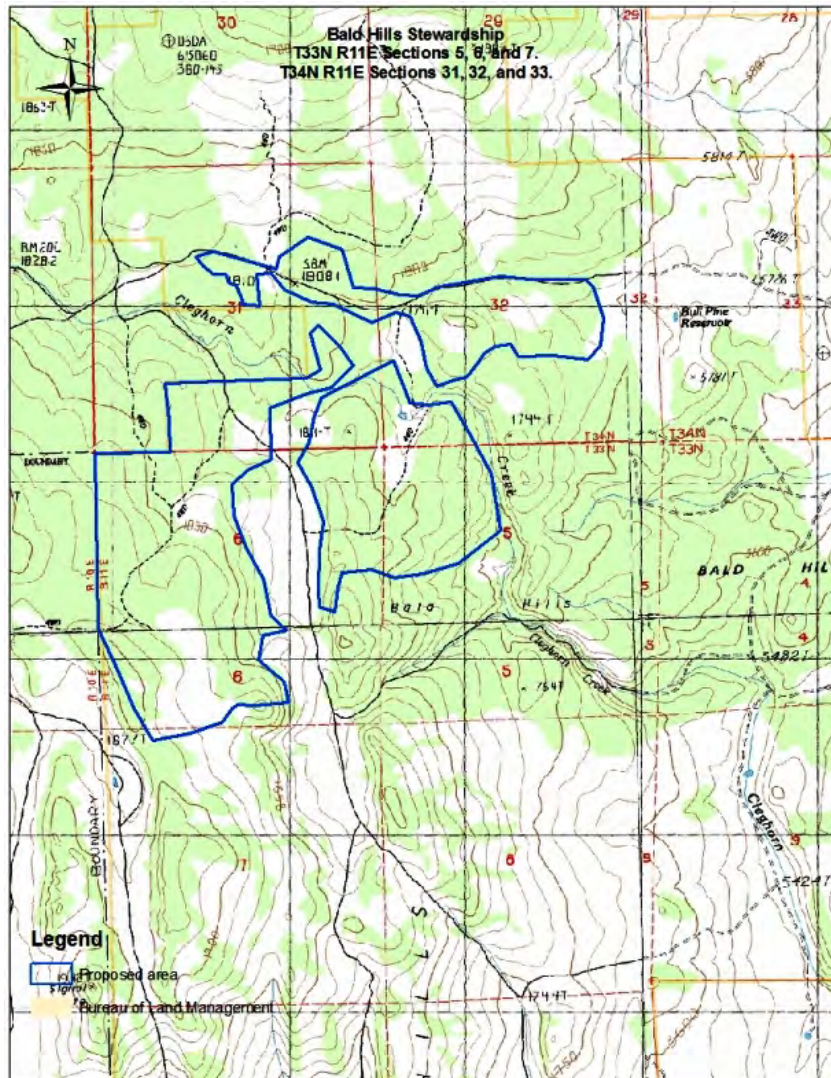
Agency or Agencies: BLM Eagle Lake F.O.

Project Name: Bald Hills Stewardship

Project Coordinates: W120.7568 N40.7609

Summary of Project: The BLM proposes to reduce the density of Jeffrey pine and western juniper on northwest of Eagle Lake (see Map). The primary objectives are to reduce the risk of high severity wildfire in the naturally regenerated stand and to increase spacing between trees in the plantations. The density along the Cleghorn Road will also be reduced which will enhance its use as a fire break. The secondary benefits include improving wildlife habitat by increasing the biodiversity of understory vegetation and enhancing forest stand resilience to insects and disease. Work on the ground is scheduled to begin in spring 2012. The primary treatment method will be mechanized thinning with biomass and sawtimber removal.

Project Map:



2012 Lassen County CWPP Work Plan

WUI Area: Non WUI

Funding: Funded

2012 Implementation

Number of Acres: 320

Agency or Agencies: BLM Eagle Lake F.O.

Project Name: Brush Hill

Project Coordinates: -121.2222 40.3345

Summary of Project: The Brush Hill units will be harvested using conventional tractor logging methods. This will include mechanized felling and tracked or rubber-tired skidding. Forest products include sawlogs and biomass (wood chips). A well-developed road system exists with drainage facilities in place. Trees to be harvested will be designated by marking by a professional forester and will be based on a single tree selection silvicultural method. Late successional trees with characteristics that make them suitable for wildlife habitat will be retained and in some cases designated with placards. Current canopy conditions across substantial portions of these stands are near 100% canopy closure. The harvest prescription will target a crown spacing of between 10 to 20 feet. This will reduce crown continuity and wildfire hazard fuels.

Project Map:



2012 Lassen County CWPP Work Plan

WUI Area: Susanville

Funding: Funded

2012 Implementation

Number of Acres: 75

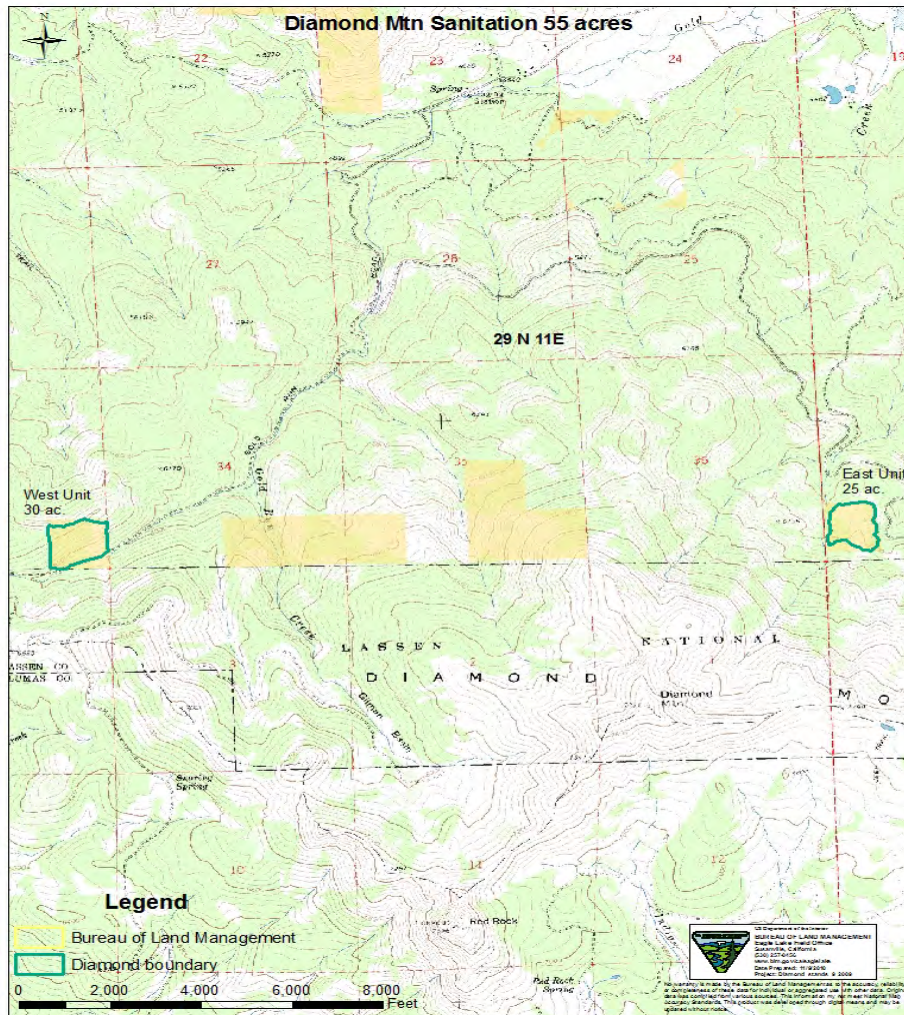
Agency or Agencies: BLM Eagle Lake F.O.

Project Name: Diamond Mountain Stewardship

Project Coordinates: W120.6777 N40.3248

Summary of Project: The proposed action, designed to reduce the spread of mountain pine beetle and various species of dwarf mistletoe infecting ponderosa and Jeffrey pine, will incorporate a sanitation harvest and free thinning method. These silvicultural treatments will reduce the spread of these reducing mortality of trees within the stand. The harvest of infected trees will be both mechanized and hand felled. Harvest will target infected trees. Wood products will be utilized for sawlogs, biomass, and fuelwood. Contract is awarded and work may begin any time.

Project Map:



2012 Lassen County CWPP Work Plan

WUI Area: Non WUI

Funding: Choose an item.

2012 Implementation

Number of Acres: 1500

Agency or Agencies: BLM Eagle Lake F.O.

Project Name: Dodge Reservoir Stewardship

Project Coordinates: N40.9624 W120.1185

Summary of Project: Using Stewardship Contracting Authority, thin approximately 1500 acres over three years 2011-2015 using mechanical and hand treatments to reduce high densities of western juniper. The main objective is to improve sage grouse habitat, watershed health, reduce the threat of catastrophic wildfires and to restore the project area to a more healthy and productive plant community. Most of the material will be chipped and removed to be utilized as biomass for electricity production in local Co-Generation Plants. Completed (2010): 200 acres of mechanical thinning and 5 acres of hand thinning.

Project Map:



2012 Lassen County CWPP Work Plan

WUI Area: Non WUI

Funding: Partially Funded

2012 Implementation

Number of Acres: 3500

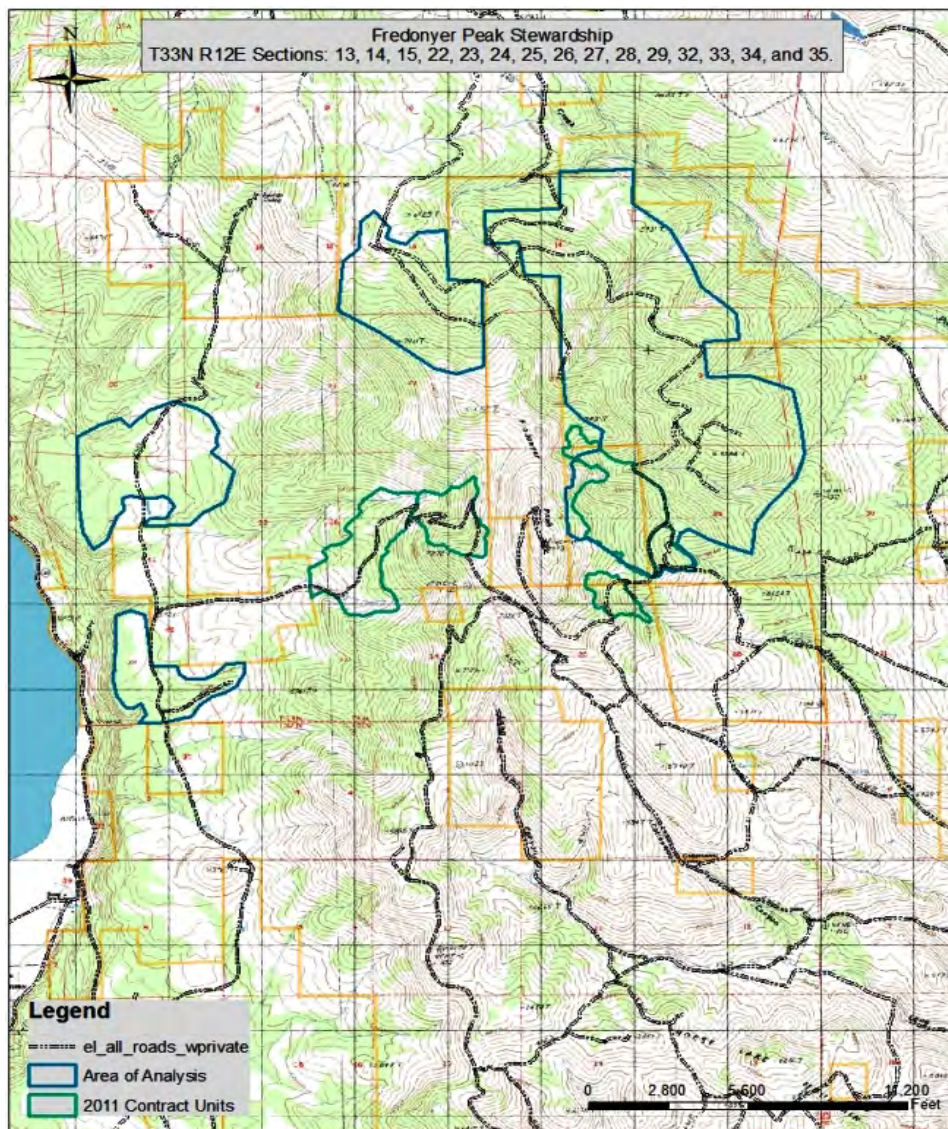
Agency or Agencies: BLM Eagle Lake F.O.

Project Name: Fredonyer Peak Stewardship

Project Coordinates: W120.6068 N40.6888

Summary of Project: The BLM proposes to reduce the density of white fir and western juniper on up to 3500 acres on Fredonyer Peak. This will be accomplished using the Stewardship Contracting authority. The primary objectives are to reduce the risk of high severity wildfire to the forest resources and watershed attributes, improve wildlife habitat, and enhance forest stand resilience to insects and disease. The treatment method will be mechanized harvest using conventional tractor harvesting systems and prescribed fire treatments. Wood products will be utilized for biomass, and sawlogs. This is a multi year project.

Project Map:



2012 Lassen County CWPP Work Plan

WUI Area: Non WUI

Funding: Funded

2012 Implementation

Number of Acres: 10162

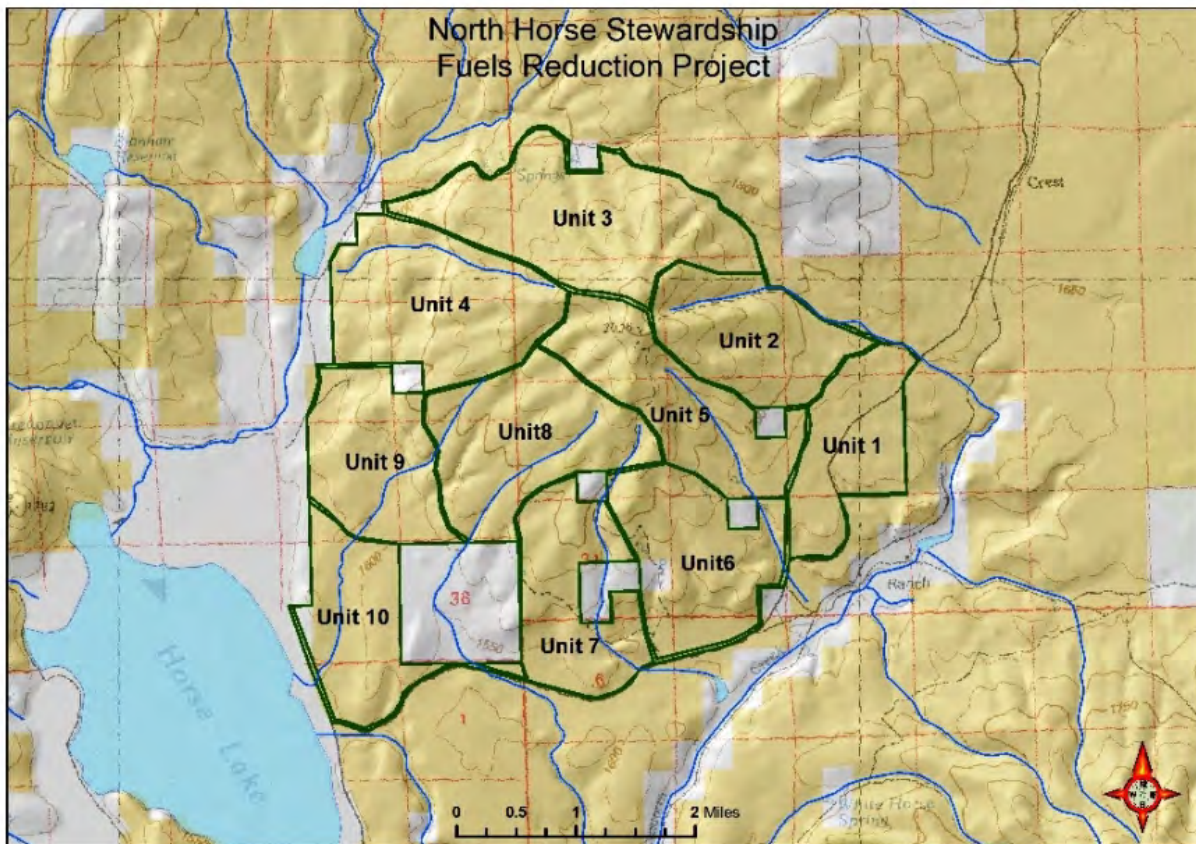
Agency or Agencies: BLM Eagle Lake F.O.

Project Name: North Horse Stewardship

Project Coordinates: N40.6929 W120.4286

Summary of Project: The proposed action is to use a combination of mechanical and prescribed fire treatments over a ten year treatment schedule to reduce high densities of western juniper reducing the risk of catastrophic fire and restoring the project area to a more healthy and productive plant community. Total project area is approximately 10,000 acres. Most of the material will be chipped and removed to be utilized as biomass for electricity production in local Co-Generation Plants. Accomplished (2010): 665 acres of mechanical thinning, 100 acres of handthinning/piling, and 125 acres of pile burning. Accomplished (2011): 1,130 acres of mechanical thinning, 300 acres of handthinning/piling, and 88 acres of pile burning. Planned (2012) 1,200 acres of Mechanical thinning.

Project Map:



2012 Lassen County CWPP Work Plan

WUI Area: Non WUI

Funding: Funded

2012 Implementation

Number of Acres: 570

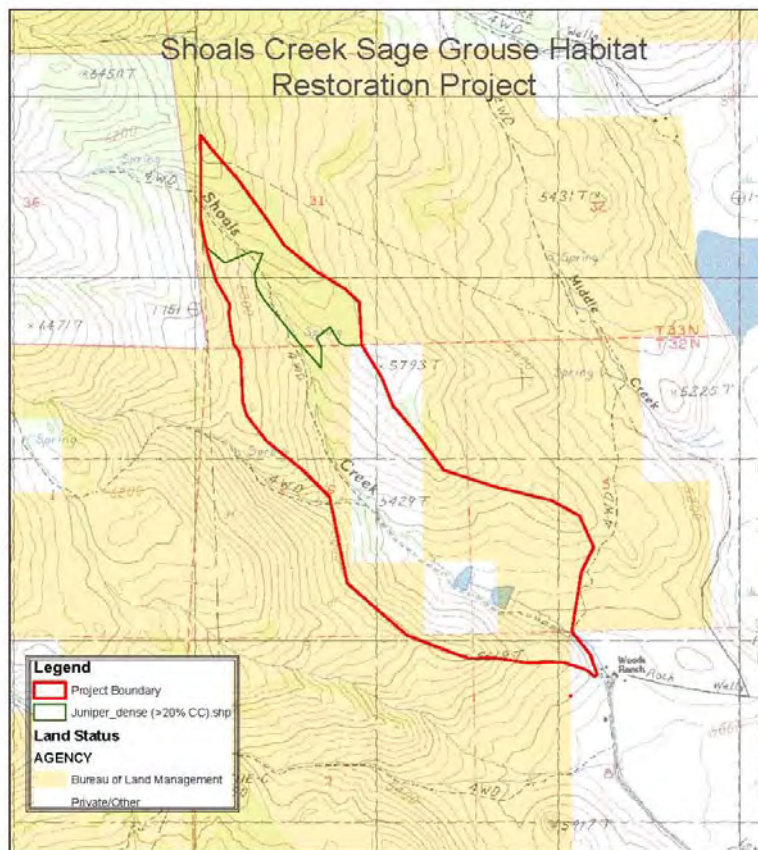
Agency or Agencies: BLM Eagle Lake F.O. & NRCS

Project Name: Shoals Creek Sage-Steppe Restoration Project

Project Coordinates: N40.66061 W120.54932

Summary of Project: The BLM proposes to reduce high densities of western juniper within a 570 acre project area. This would serve to decrease the probability of large catastrophic wildfires and would promote the reestablishment of lower fire hazard vegetation types dominated by native shrubs, grasses and forbs thereby improving the overall ecosystem health and Sage Grouse Habitat.

Project Map:



2012 Lassen County CWPP Work Plan

WUI Area: Eagle Lake/Stones Landing

Funding: Partially Funded

2012 Planning

Number of Acres: 1716

Agency or Agencies: BLM Eagle Lake F.O.

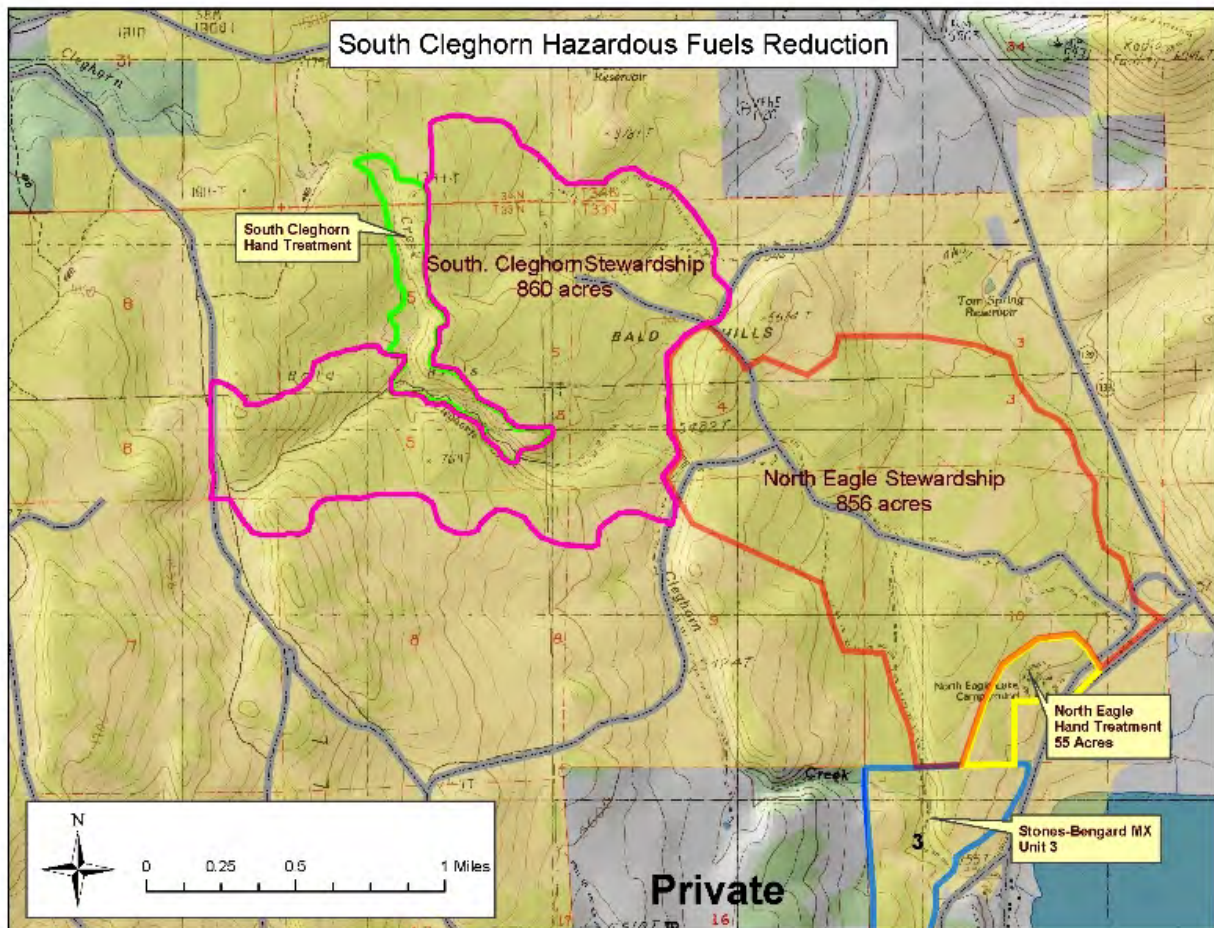
Project Name: South Cleghorn & North Eagle Stewardship

Project Coordinates: N40.7521 W120.7507

Summary of Project: Using Stewardship Contracting Authority, 860 acres were treated 2008-2009 using a variety of mechanical means to reduce wildland fuels. The main objective is to reduce the risk of catastrophic wildfire to the community of Stones-Bengard. A small hand treatment area of 88 acres is also identified along Cleghorn Creek to protect the stream bed from mechanical operations. Treatment began in 2009, by crews using chainsaws to reduce the current density of juniper and pine, and was completed during the summer of 2010. The piles generated were burned during December 2010.

Broadcast Underburning is in the planning phase for 2012-2014 for this project area and the North Eagle Stewardship area also shown on the map.

Project Map:



2012 Lassen County CWPP Work Plan

WUI Area: Eagle Lake/Stones Landing

Funding: Funded

2012 Implementation

Number of Acres: 1813

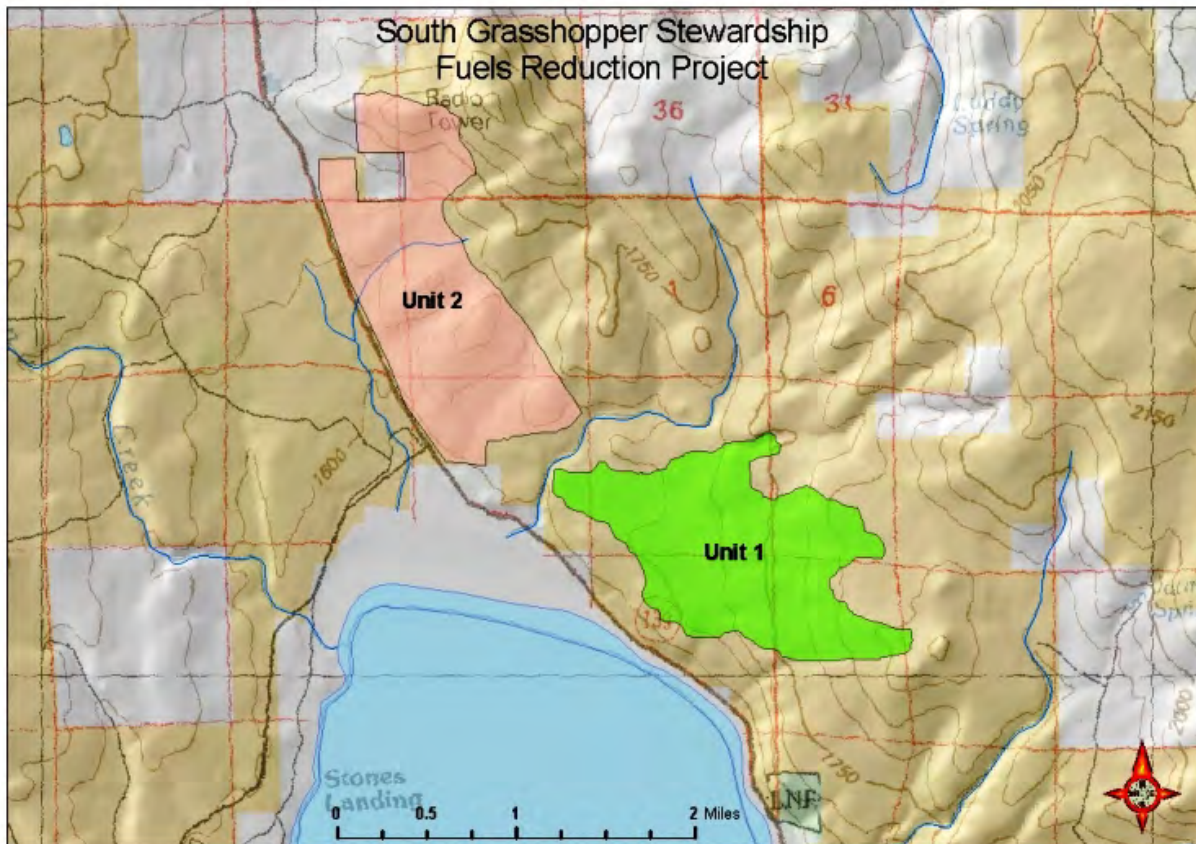
Agency or Agencies: BLM Eagle Lake F.O.

Project Name: South Grasshopper Stewardship

Project Coordinates: N40.7298 W120.6770

Summary of Project: Using Stewardship Contracting Authority, thin 1815 acres using a combination of mechanical and prescribed fire treatments to reduce high densities of western juniper. The main objective is to reduce the threat of catastrophic wildfires and restore the project area to a more healthy and productive plant community. Most of the material will be chipped and removed to be utilized as biomass for electricity production in local Co-Generation Plants. Completed (2010): 1,000 acres of mechanical thinning and biomass utilization, 65 acres of handthinning/pile construction. Completed (2011): 35 acres of handthinning/pile construction. Planned (2012): 400 acres of mechanical thinning and 100 acres of handthinning/pile construction and burning.

Project Map:





February 26, 2012

Lassen National Forest Vegetation Management Strategy

The Lassen National Forest (LNF) vegetation management strategy for this year and coming years is multi-faceted in its goals and objectives. It is intended to improve forest conditions, enhance meadow and understory vegetation, reduce fuel loading, contribute to community economic stability, and increase the forest's resiliency to disturbances. Through partnerships with landowners and local, State and Federal agencies the LNF will work reduce the risk of catastrophic wildfire and increase public awareness of the linkages between vegetation conditions and wildfire risk.

Fuel treatments play an important role in achieving the LNF objectives by:

- Reducing the risk of large, catastrophic, and costly wildfires through the use of mechanized and non-mechanized treatment of ladder fuels (dense shrubs and seedling regeneration) and down woody debris.
- Implementing fire and non-fire treatment methods to improve crown spacing, tree vigor, and forest health (see specifics regarding fuels in the Healthy Forest Restoration Act, the Healthy Forest Initiative, and the USFS' Ecological Restoration mission).
- Re-introducing fire into historically fire-dependent ecosystems, with the goal of returning these ecosystems back to their historic fire return intervals and preventing ecosystem conversion.
- Improving soil health and viability through the use of prescribed fire and fires managed for resource benefit, which release nitrogen and other nutrients back into the soil and energize native soil bacteria, making them available to local plants and vegetation.
- Improving the health and vigor of native plant and grass species through the use of fire and non-fire fuel treatments, while reducing some populations of invasive species.
- Locally, improving wildlife habitat and browse for deer, turkey, grouse, and other species which rely on native grasses and shrubs to meet their dietary and reproductive needs.

The LNF looks forward to continuing to work with our partners in 2012 and beyond to achieve shared objectives for vegetation management including fuels treatments to reduce the threat of wildfire to our communities and improve forest health.



2012 Lassen County CWPP Work Plan

WUI Area: Campbell Management Area

Funding: Funded

2012 Planning

Number of Acres: 3541

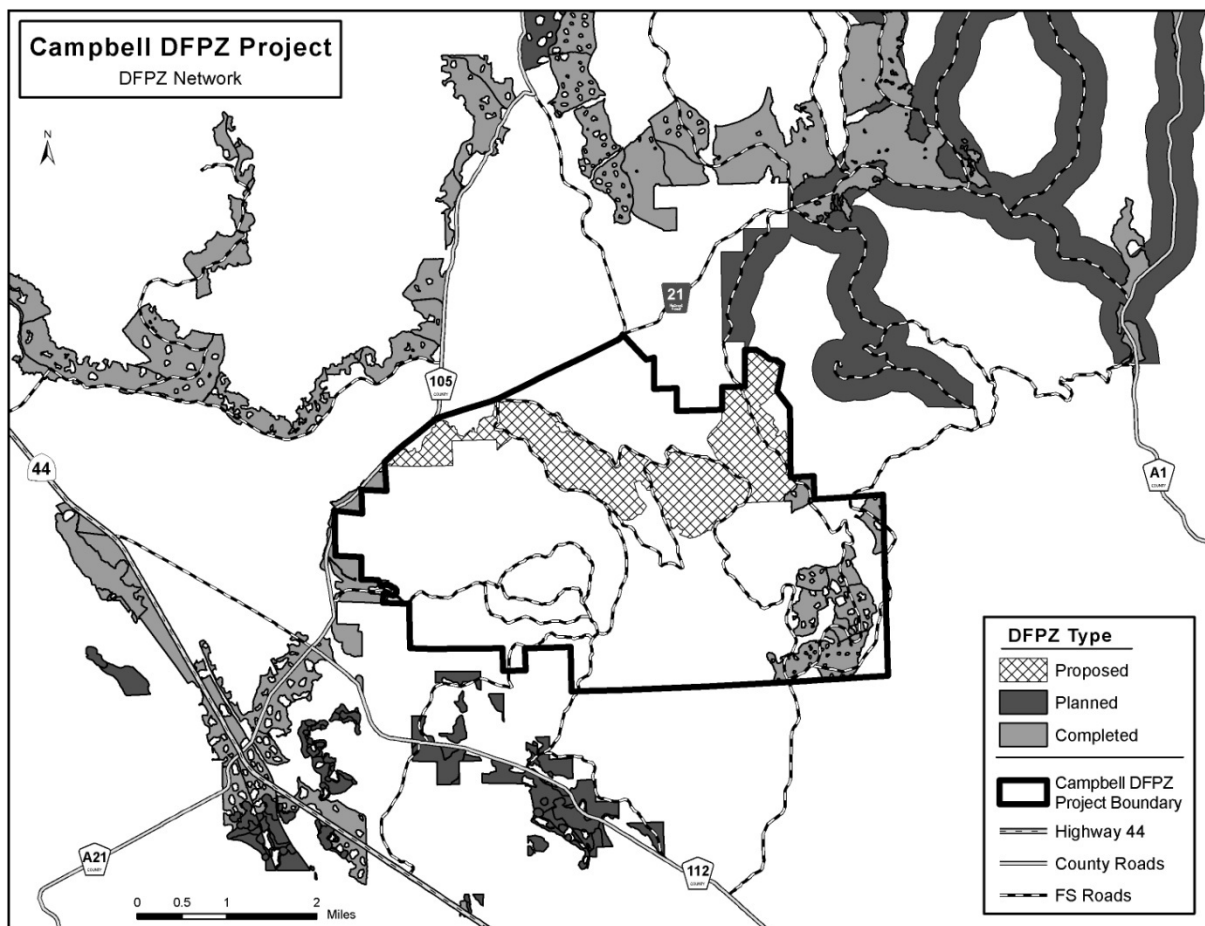
Agency or Agencies: USFS

Project Name: Campbell DFPZ NEPA

Project Coordinates: N40. 37.33 W121.45

Summary of Project: The Eagle Lake Ranger District is proposing the construction of DFPZs (defensible fuel profile zone). The objective being the reduction of horizontal and vertical fuels. Proposed treatment would include biomass removal and thinning. Scoping completed and currently responding to comments.

Project Map:



2012 Lassen County CWPP Work Plan

WUI Area: Cambell Management Area DFPZ

Funding: Funded

2012 Implementation

Number of Acres: 718

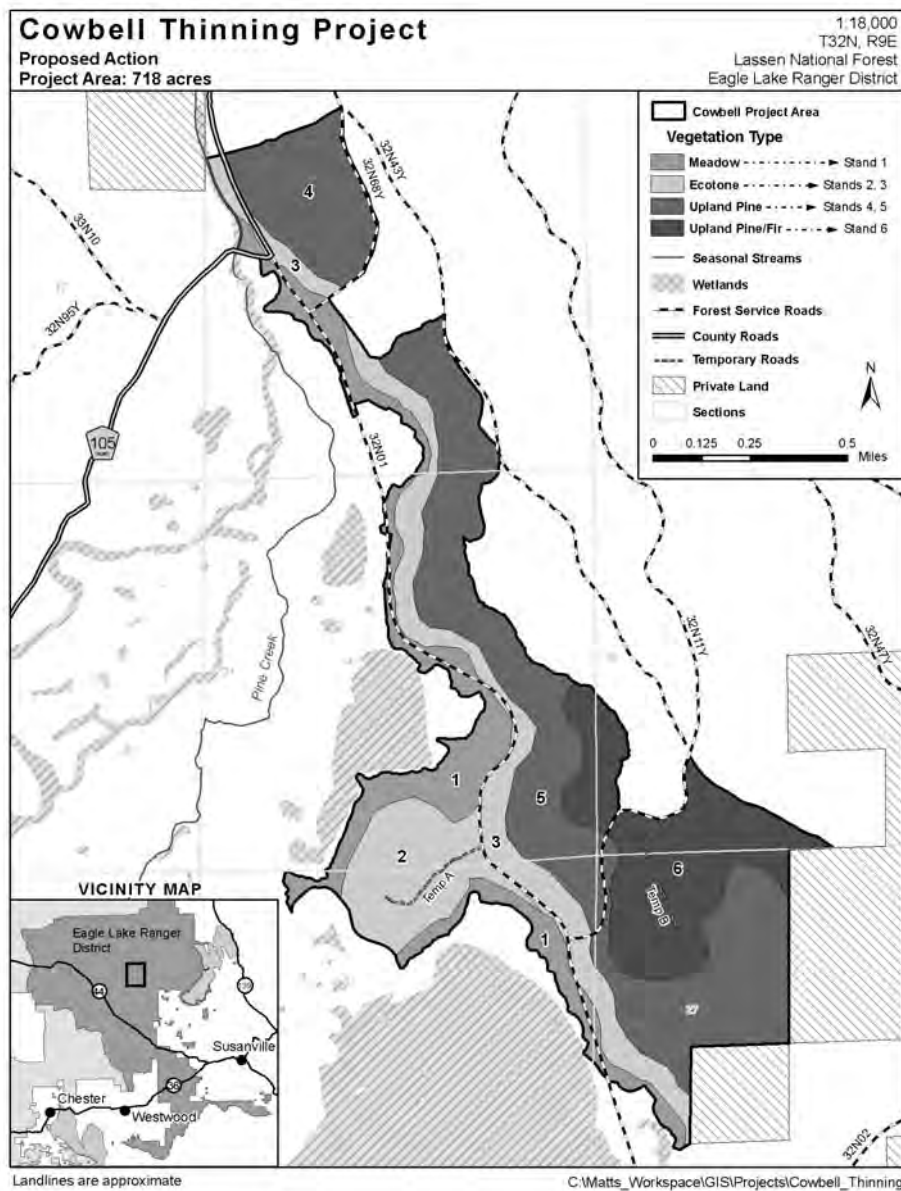
Agency or Agencies: USFS

Project Name: Cowbell DFPZ

Project Coordinates: 40.62124 120.96823

Summary of Project: Cowbell DFPZ (Defensible Fuel Profile Zone) project was sold in 2011. Thinning will take place this year, treatment will include biomass removal and thinning. The objective being the reduction of horizontal and vertical fuels.

Project Map:



2012 Lassen County CWPP Work Plan

WUI Area: Crater Management Area

Funding: Funded

2012 Implementation

Number of Acres: 275

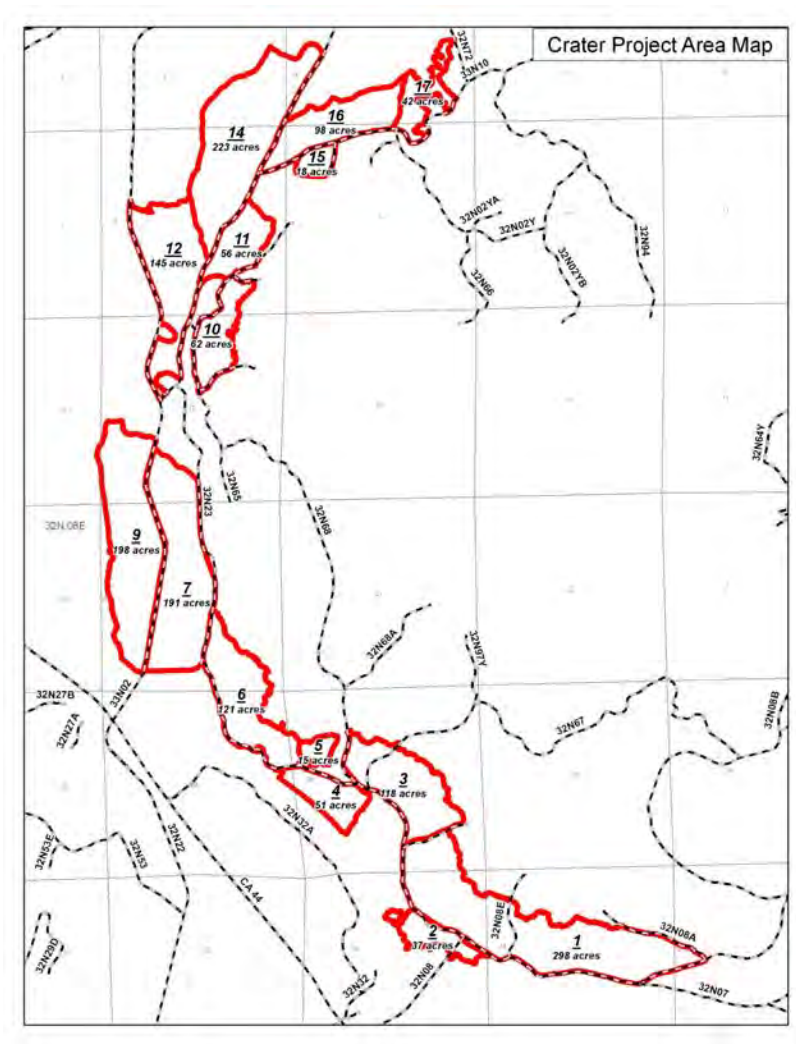
Agency or Agencies: USFS

Project Name: Crater Underburn

Project Coordinates: N40.6358 W121.10419

Summary of Project: Reintroduce fire into the ecosystem, reduction of fuel loading within a DFPZ and maintain and begin the process of restoring a more natural fir regime with the use of prescribed fire.

Project Map:



2012 Lassen County CWPP Work Plan

WUI Area: Diamond Management Area

Funding: Funded

2012 Planning

Number of Acres:

Agency or Agencies: USFS

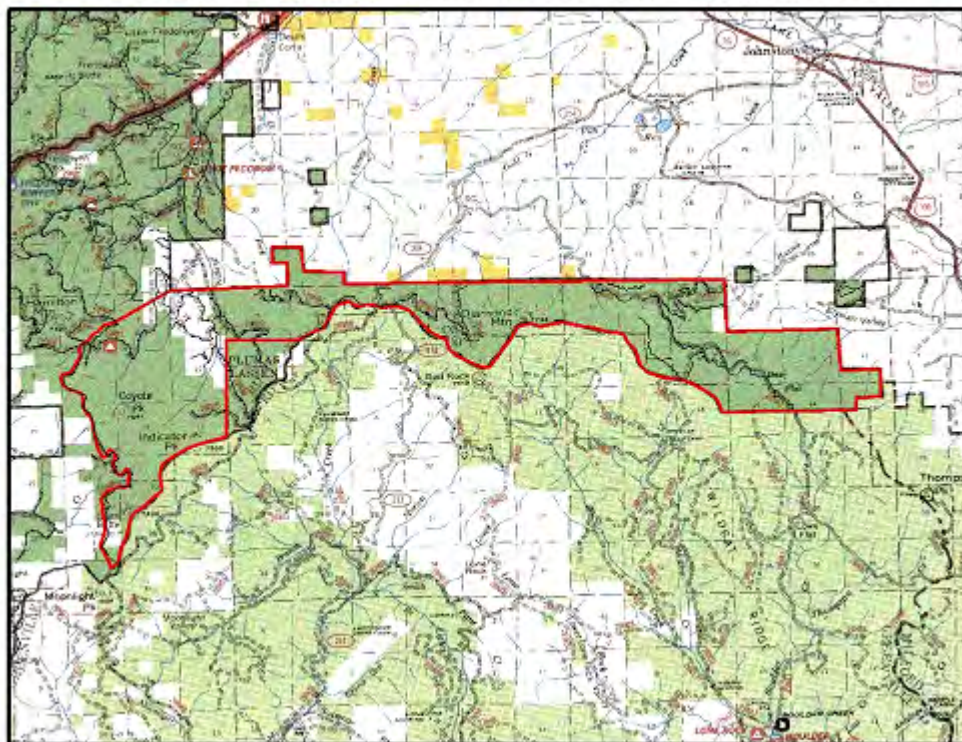
Project Name: North Diamond NEPA

Project Coordinates: N40.3125 W120.6833

Summary of Project: The Eagle Lake RD is proposing to create DFPZ's on FS lands to provide protection from wildfire around or near the communities of Susanville, Janesville and out lying residences in the proximity of Forest Service lands in the Diamond Mountain Area. Development of proposed action is progress.

Project Map:

Proposed Wildland Urban Interface Fuels Treatment Area



2012 Lassen County CWPP Work Plan

WUI Area: Harvey Management Area DFPZ

Funding: Funded

2012 Planning

Number of Acres: 1700

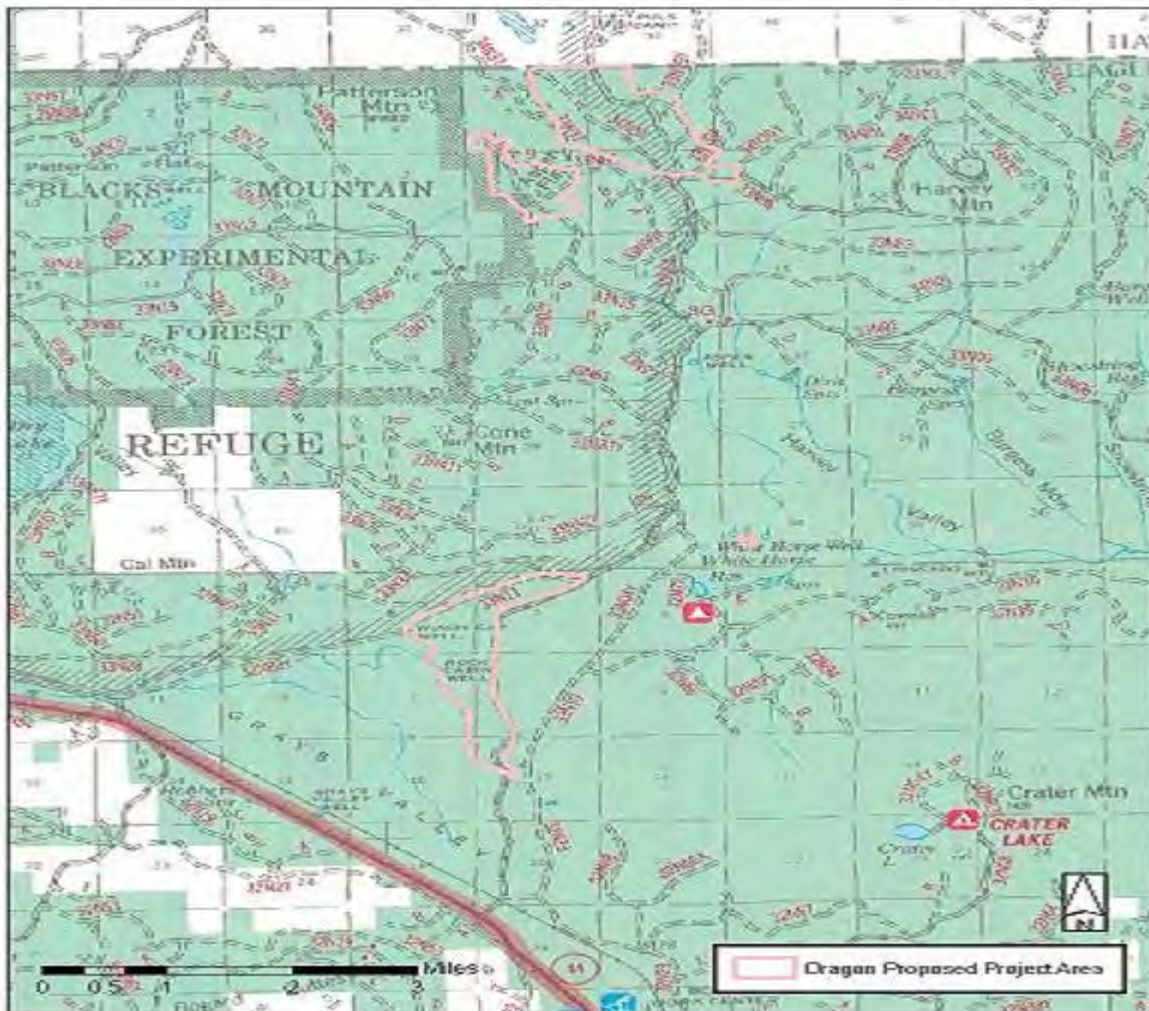
Agency or Agencies: USFS

Project Name: Dragon Project

Project Coordinates: N40.45 W121.07.20

Summary of Project: Project will propose the construction of DFPZ, Aspen enhancement, Area thinning and Plantation maintenance RX burning. Project is in the planning stage, with proposed action being completed this spring.

Project Map:



2012 Lassen County CWPP Work Plan

WUI Area: Cone Management Area DFPZ

Funding: Funded

2012 Implementation

Number of Acres: 212

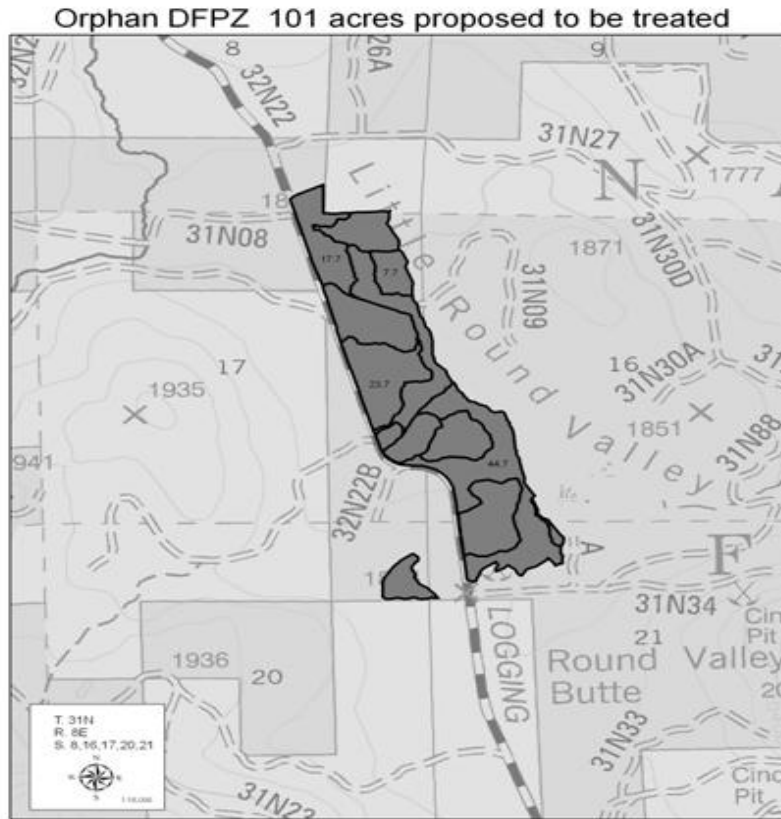
Agency or Agencies: USFS

Project Name: Orphan DFPZ STWD

Project Coordinates: N40.54873 W121.10482

Summary of Project: Orphan DFPZ STWD was sold in 2011, thinning should take place this year. Treatment would include biomass removal and thinning. Subsequent treatment would include prescribed burning of the activity generated fuels.

Project Map:



2012 Lassen County CWPP Work Plan

WUI Area: Grays Management Area DFPZ

Funding: Funded

2012 Implementation

Number of Acres: 990

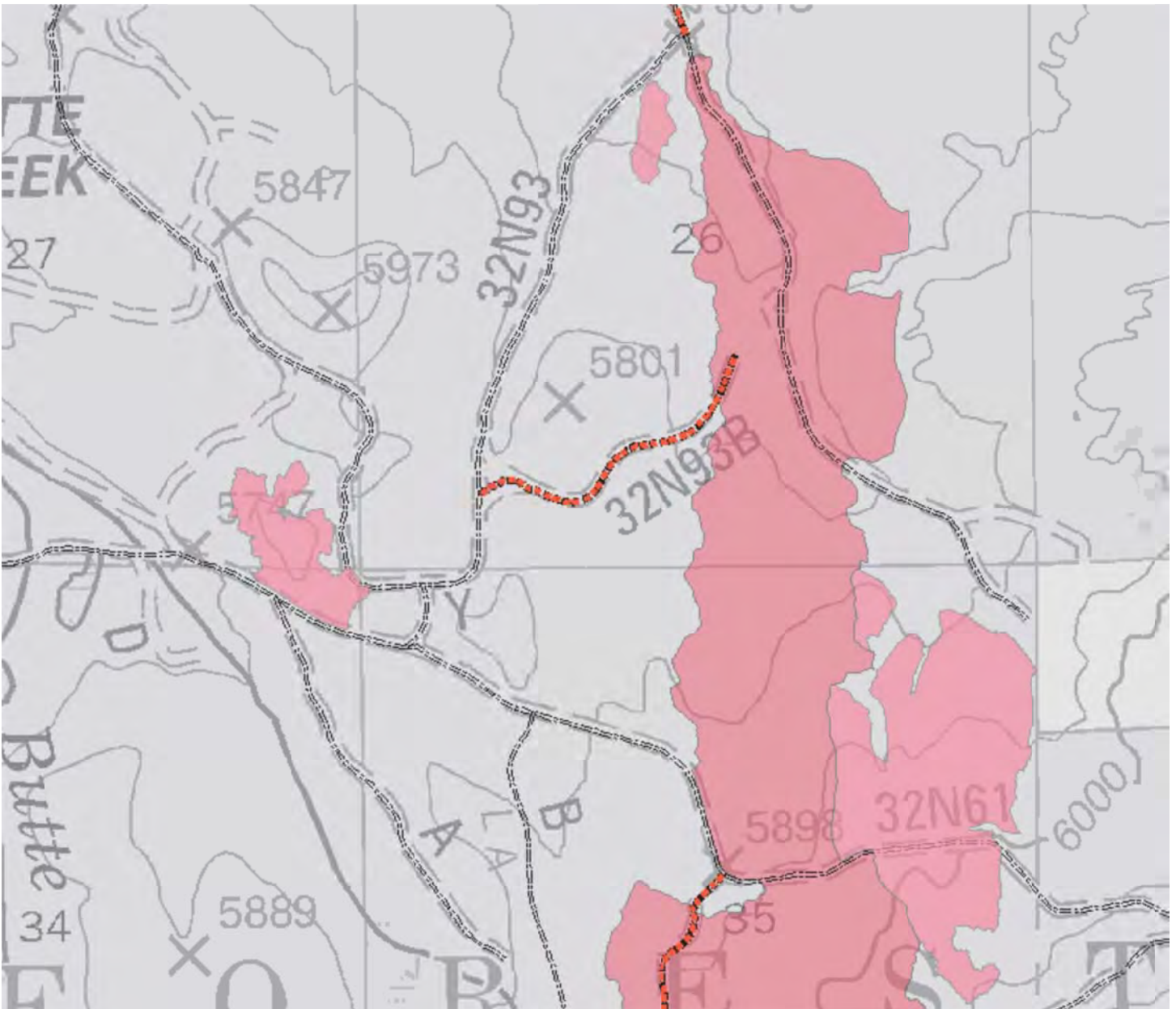
Agency or Agencies: USFS

Project Name: Pole Spring Plantation Mastication

Project Coordinates: N40.6066 W121.6833

Summary of Project: Pole Spring project implementation started in 2011, hand thinning of small diameter trees was completed. Mastication of material and brush will start in 2012.

Project Map:



2012 Lassen County CWPP Work Plan

WUI Area: McCoy Management area DFPZ

Funding: Funded

2012 Implementation

Number of Acres: 41

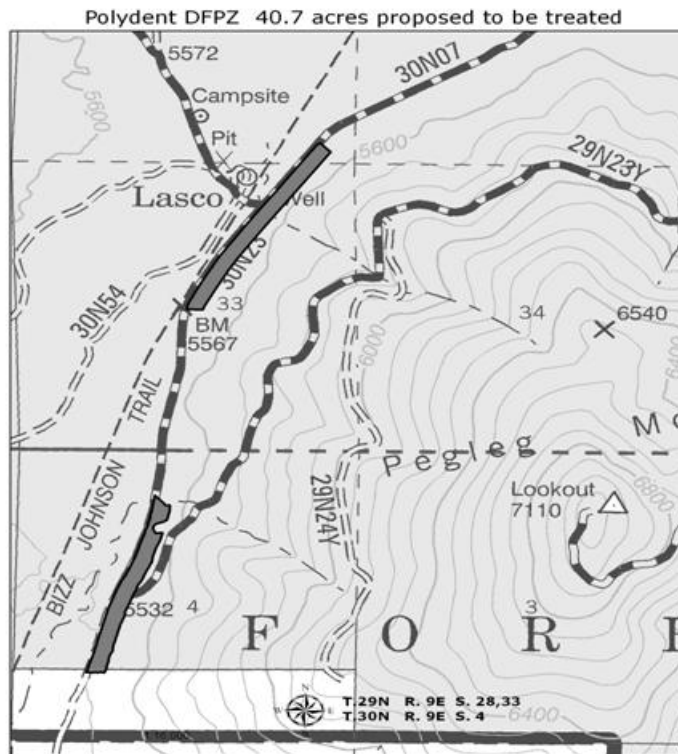
Agency or Agencies: USFS

Project Name: Polydent DFPZ STWD

Project Coordinates: N40.43172

Summary of Project: Polydent DFPZ STWD DFPZs (defensible fuel profile zone) was sold in 2011. Project should be thinned this year, proposed treatment would include biomass removal and thinning. Subsequent treatment would include prescribed burning of the activity generated fuels.

Project Map:



2012 Lassen County CWPP Work Plan

WUI Area: McCoy Management Area DFPZ

Funding: Funded

2012 Implementation

Number of Acres: 1233

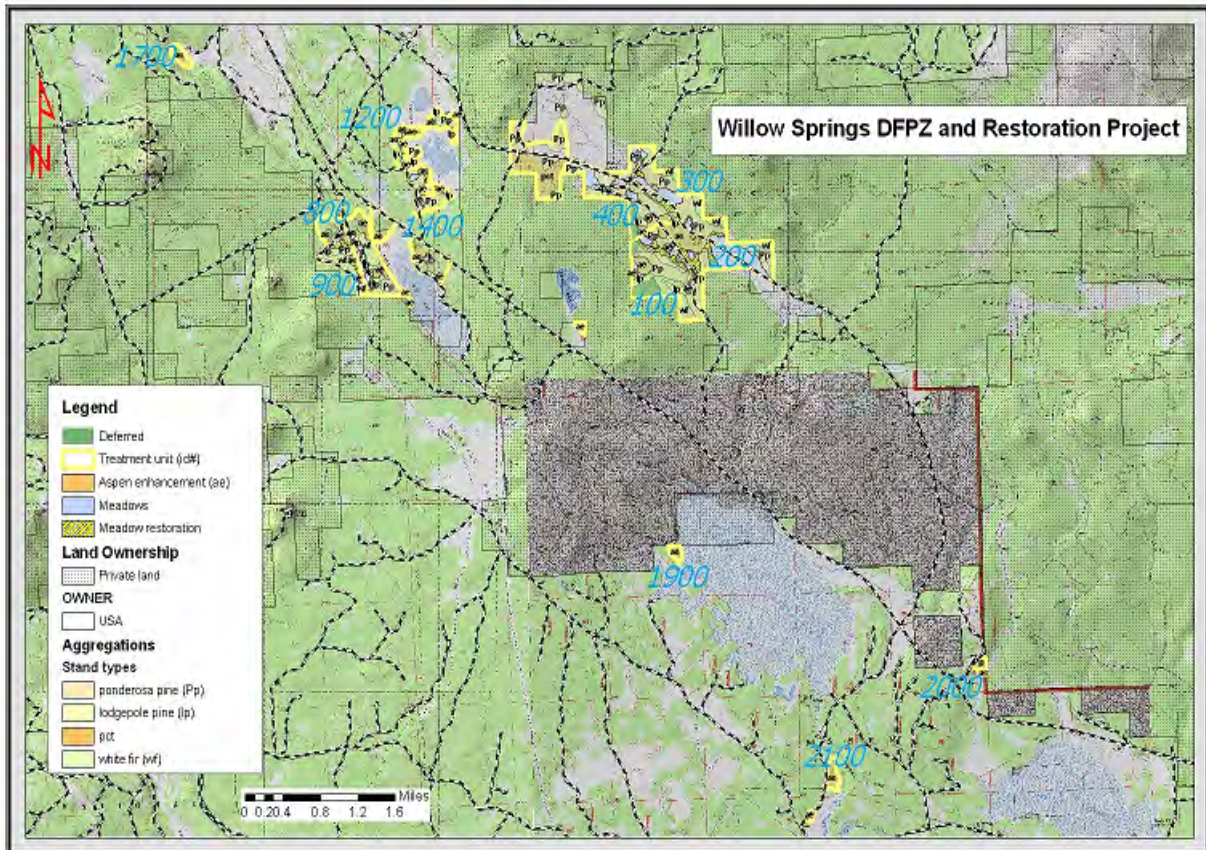
Agency or Agencies: USFS

Project Name: Willow DFPZ

Project Coordinates: N40.46095 W120.91866

Summary of Project: The Willow Creek project was sold in 2011 and implementation should start in 2012. The objective being the reduction of horizontal and vertical fuels. Treatment would include biomass removal and thinning. Subsequent treatment would include prescribed burning of the activity generated fuels.

Project Map:



2012 Lassen County CWPP Work Plan

WUI Area: Ash Valley WUI & DFPZ

Funding: Planning/Not Funded

2012 Planning

Number of Acres: 5000

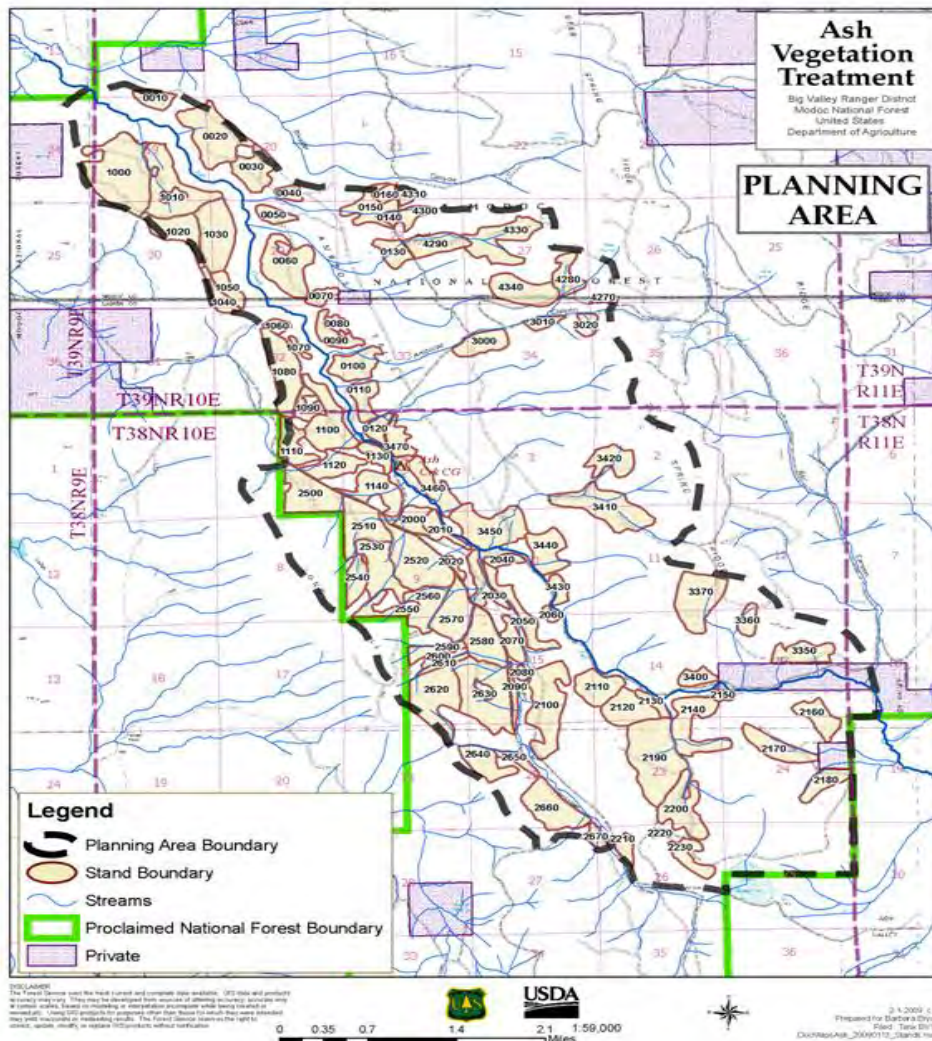
Agency or Agencies: USFS, Modoc NF

Project Name: Ash Vegetation Treatment

Project Coordinates: N 41.15594 W 120.8166

Summary of Project: The Ash Vegetation Treatment project will implement thinning and underburning of timber stands to reduce the susceptibility of western pine beetle and mountain pine beetle attacks; improve forest health and wildlife habitat; and reduce the risks of large scale catastrophic wildfires to forest and private land. 75 acres out of 1,000 of Juniper removal and pile burning has been completed. A request for funding was submitted for completion of the Juniper removal and pile burning. The 4,000 acer timber sale is planned to be awarded in 2013.

Project Map:



2012 Lassen County CWPP Work Plan

WUI Area: Highway 139 DFPZ

Funding: Funded

2012 Implementation

Number of Acres: 93

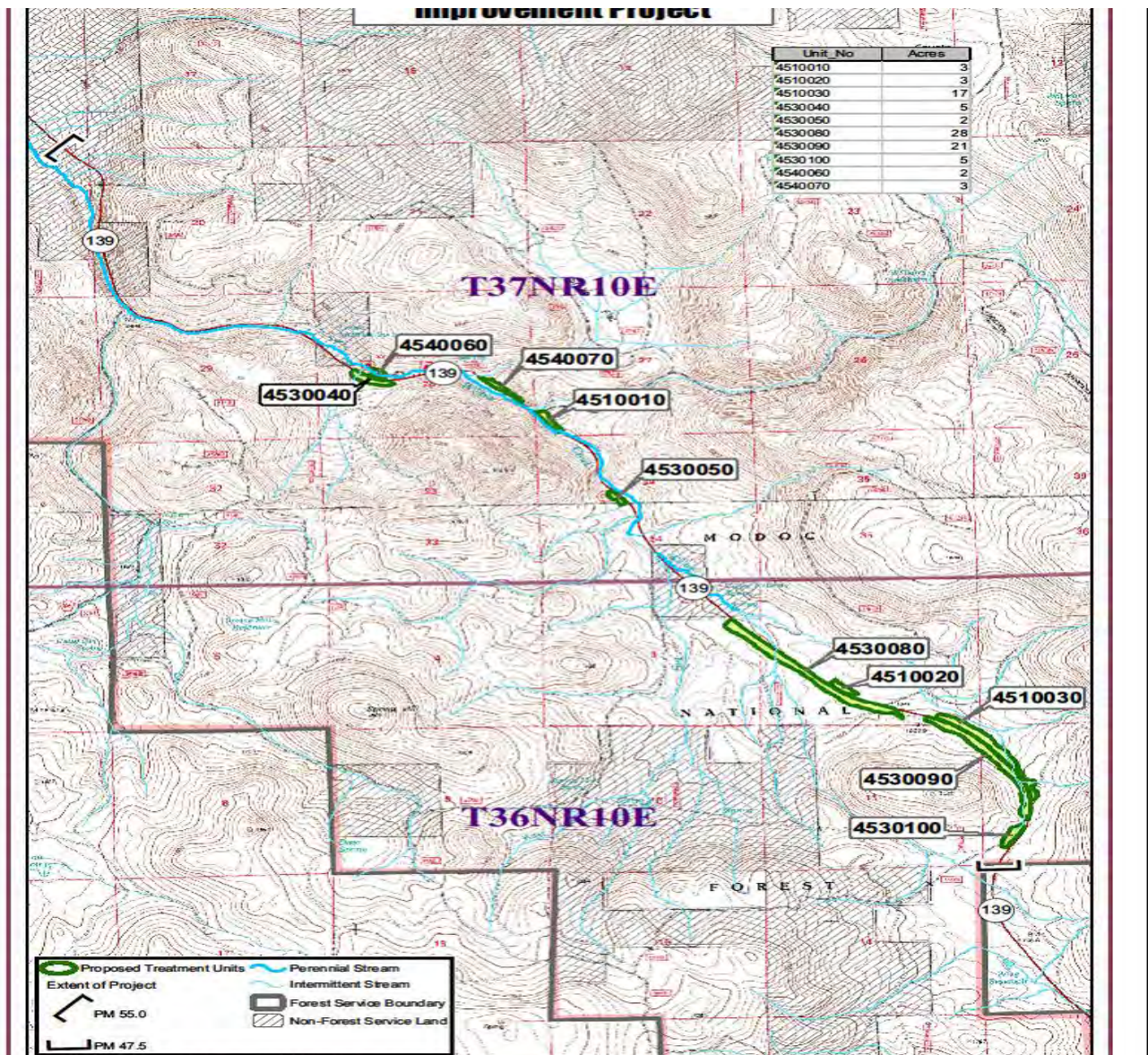
Agency or Agencies: USFS, Modoc NF

Project Name: Willow Creek Highway Safety Improvement Project

Project Coordinates: N 40.99222 W 120.8035

Summary of Project: The completion in the removal of hazard trees from mile markers 47.5 to 55 on Highway 139 in Lassen Co and stand thinning improvements has been completed. The completion of the slash piles are on hold due burning conditions.

Project Map:





United States
Department of
Agriculture

Forest
Service
National
Forest

159 Lawrence Street
P.O. Box 11500
Quincy, CA 95971-6025
(530) 283-2050 Voice
(530) 534-7984 Text (TDD)

Plumas National Forest Vegetation Management Goal and Strategy

The goal of the Plumas National Forest vegetation management programs is to achieve sustainable communities and sustainable vegetation across the landscape by providing healthy, resilient forests and reducing the threat of catastrophic fires. This goal will be accomplished by integrating several programs in a way that enables the PNF to reduce hazardous fuels, provide commercial products, and coordinate vegetation management activities with those of private landowners.

Attaining the goal involves linking past and future fuel treatments across the landscape to take advantage of natural and human made barriers, as well as collaborating with local partners. Some of these priorities include:

- Implementing the Herger-Feinstein Quincy Library Group Forest Recovery Act
- Reducing fuels in wild land-urban interfaces or intermixes (WUI's)
- Reducing fire hazards on lands near key community infrastructure, such as power, water, communication systems, and municipal watersheds
- Reducing the threat of catastrophic fire on habitat for designated threatened, endangered, and sensitive species
- Addressing forest health problems, such as insect and disease infestations

The Plumas National Forest will annually share its long range plan with our local partners to provide for a collaborative effort towards reaching our similar goals.



2012 Lassen County CWPP Work Plan

WUI Area: Janesville

Funding: Funded

2012 Implementation

Number of Acres: 100

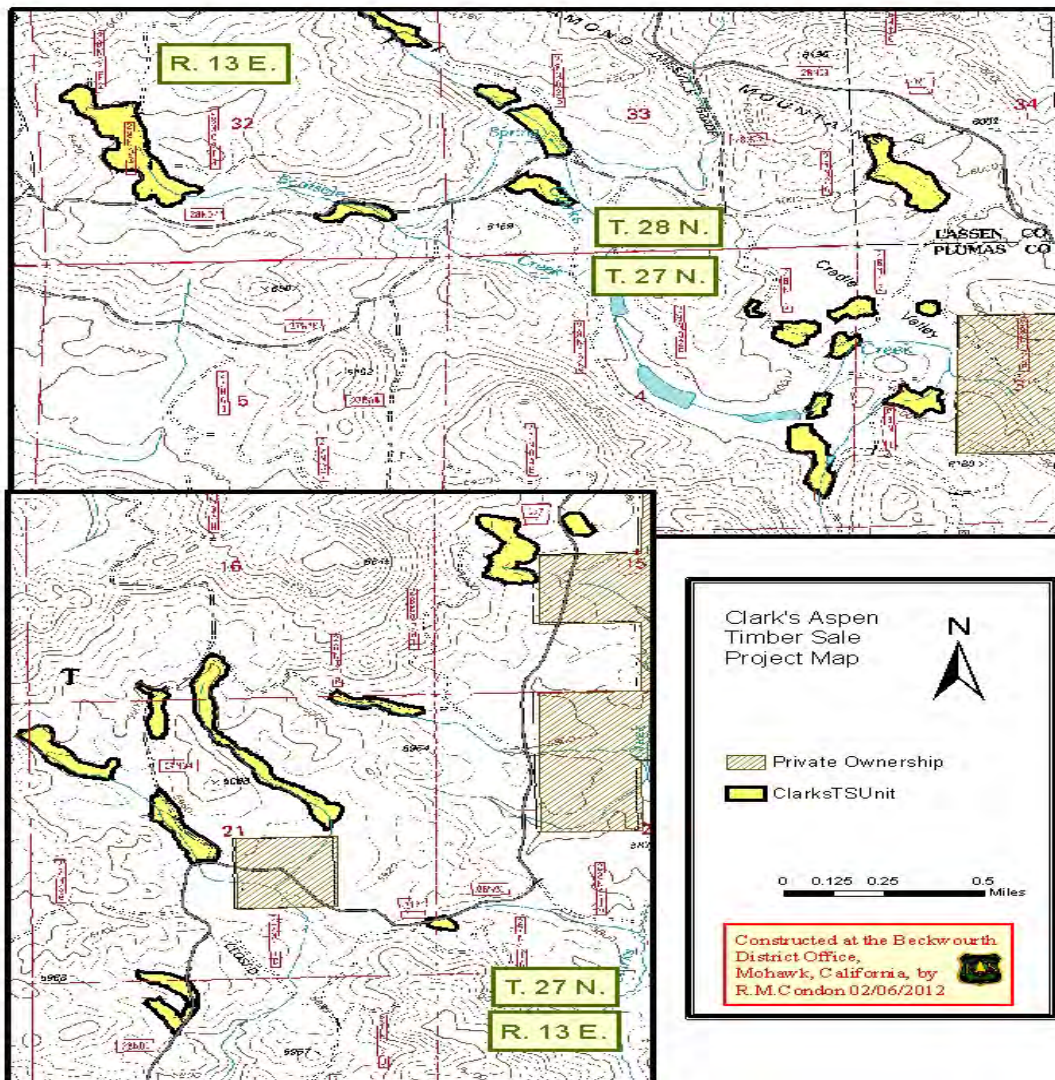
Agency or Agencies: USFS

Project Name: Clarks Aspen Timber Sale

Project Coordinates: 40 12 21 120 30 54

Summary of Project: Reduce Hazardous Fuels by saw log and biomass removal. This project has about 20ac of handthin that has been completed by the Susanville Indian Rancheria. Piles will be burned this winter if conditions allow.

Project Map:



2012 Lassen County CWPP Work Plan

WUI Area: Janesville

Funding: Funded

2012 Implementation

Number of Acres: 53

Agency or Agencies: USFS

Project Name: Thompson Aspen Stewardship

Project Coordinates: 40 12 21 120 30 54

Summary of Project: Hazardous Fuels Reduction by saw log and biomass removal. This project is set to begin as soon as the snow melts this spring and is currently under contract.

Project Map:

