

7TH GENERATION CATTLE RANCH

A California Legacy

❖ FIVE DOT RANCH ❖

Five Dot Ranch Prescribed Fire Stewardship



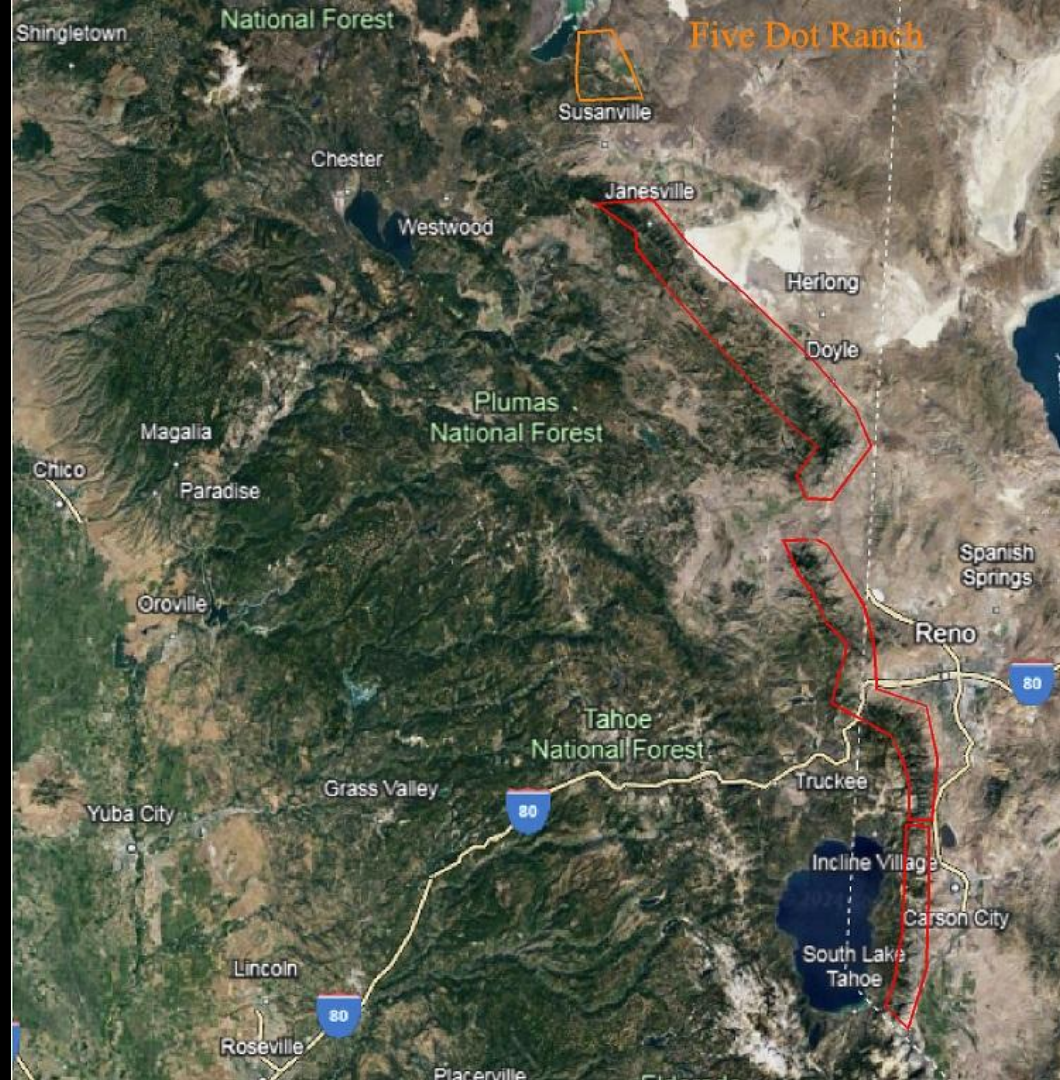
Terra Fuego
Resource Foundation

Catastrophic Fire History on the Escarpment

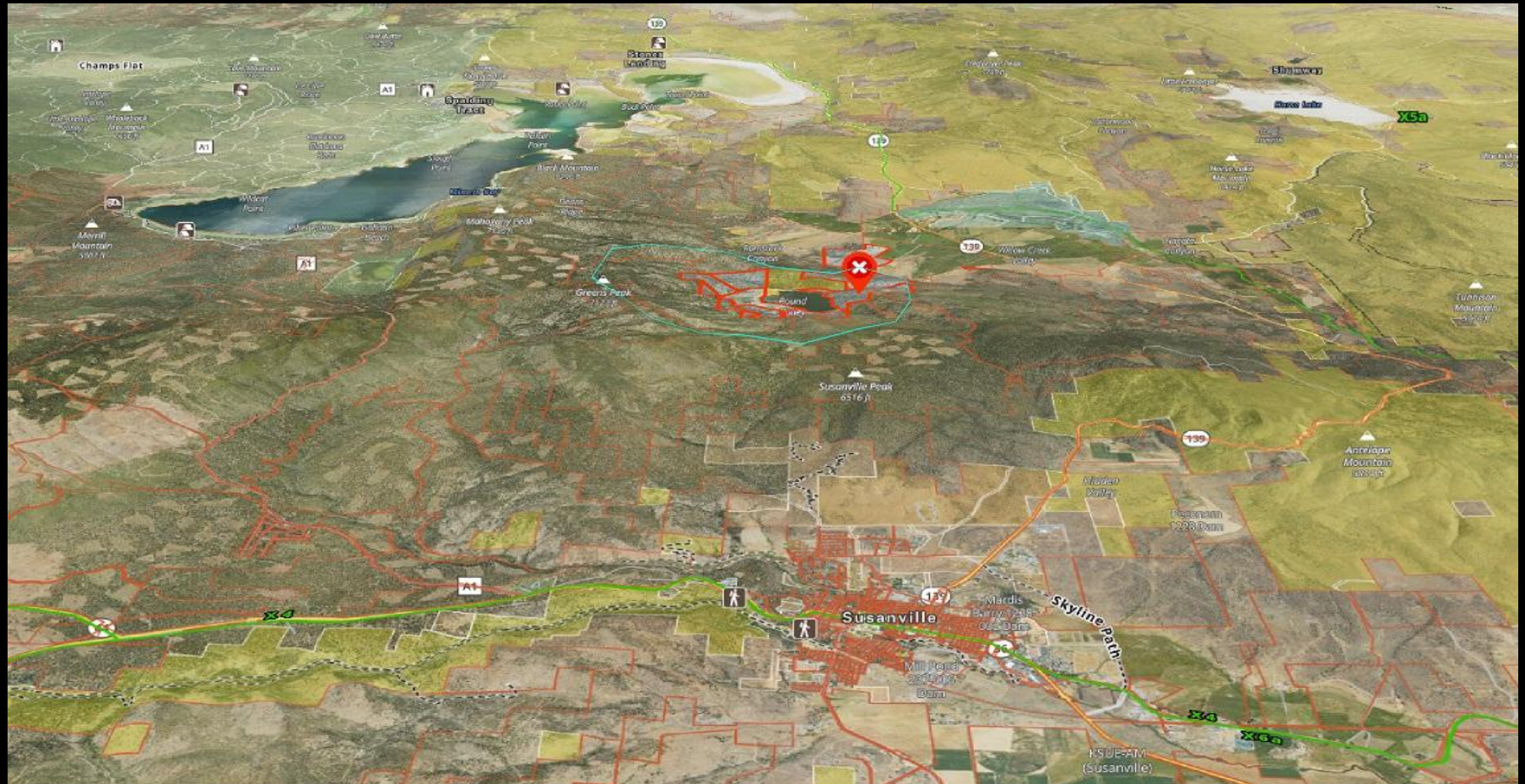
The eastern edge of the Sierra Nevada and Cascade Mountain Ranges has experienced enormous amounts of wildfire deforestation in the past 10 years.

The Five Dot Ranch property and adjacent lands are one of the last areas that have not yet experienced catastrophic fire.

Terra Fuego
Resource Foundation



Five Dot Ranch Proximity to Susanville



Strategic Proximity to Susanville

The Five Dot Ranch is far enough from Susanville that impacts to air quality will be minimal.

It is a perfect place to set a precedent for prescribed fire around the town of Susanville.

Demonstrates a proof of concept: *We can prescribe fire at scale while prioritizing controllability and air quality.*

Looking West From Willow Creek Valley



Looking Northwest from Willow Creek Valley



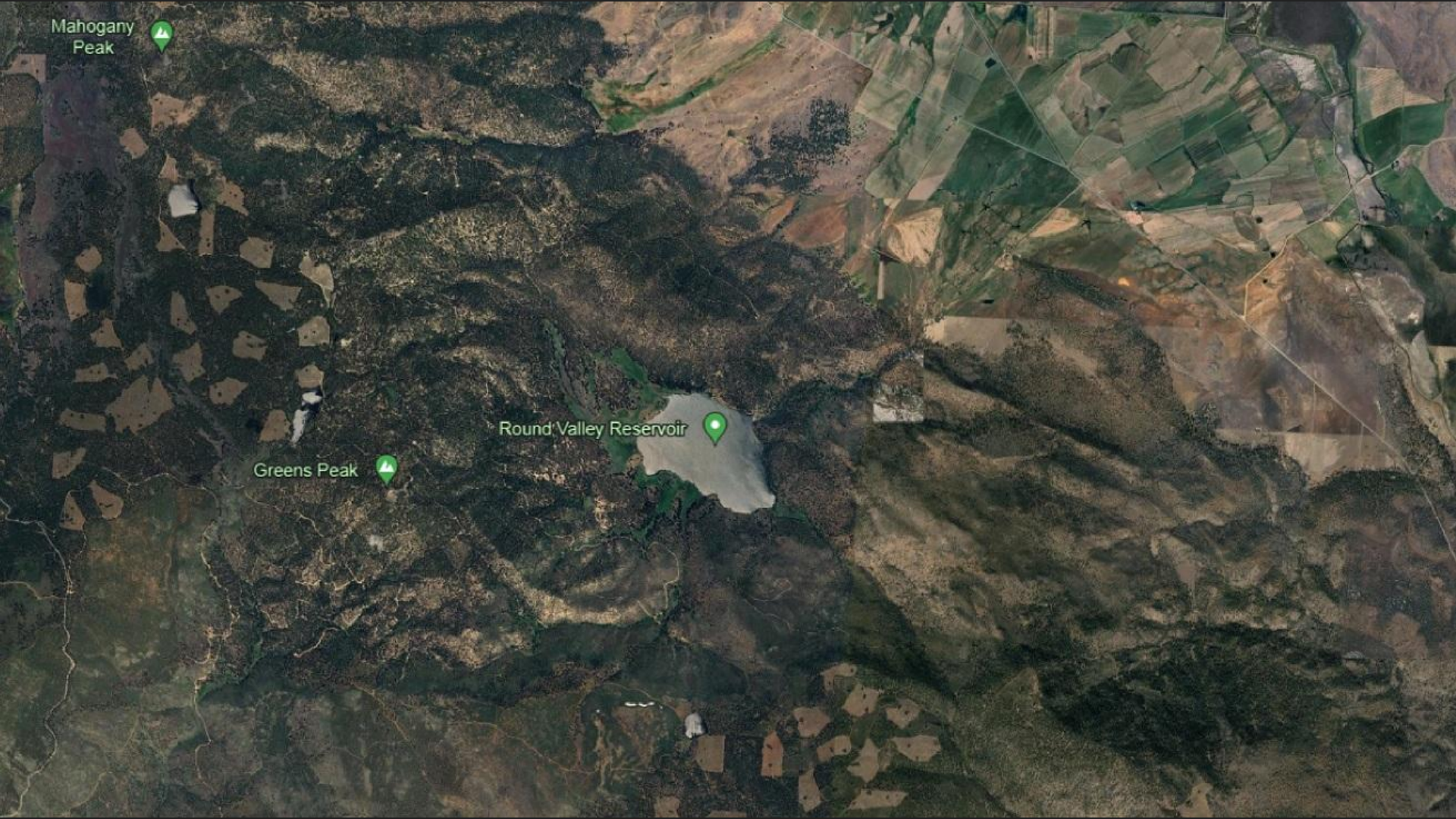
Mahogany
Peak



Greens Peak

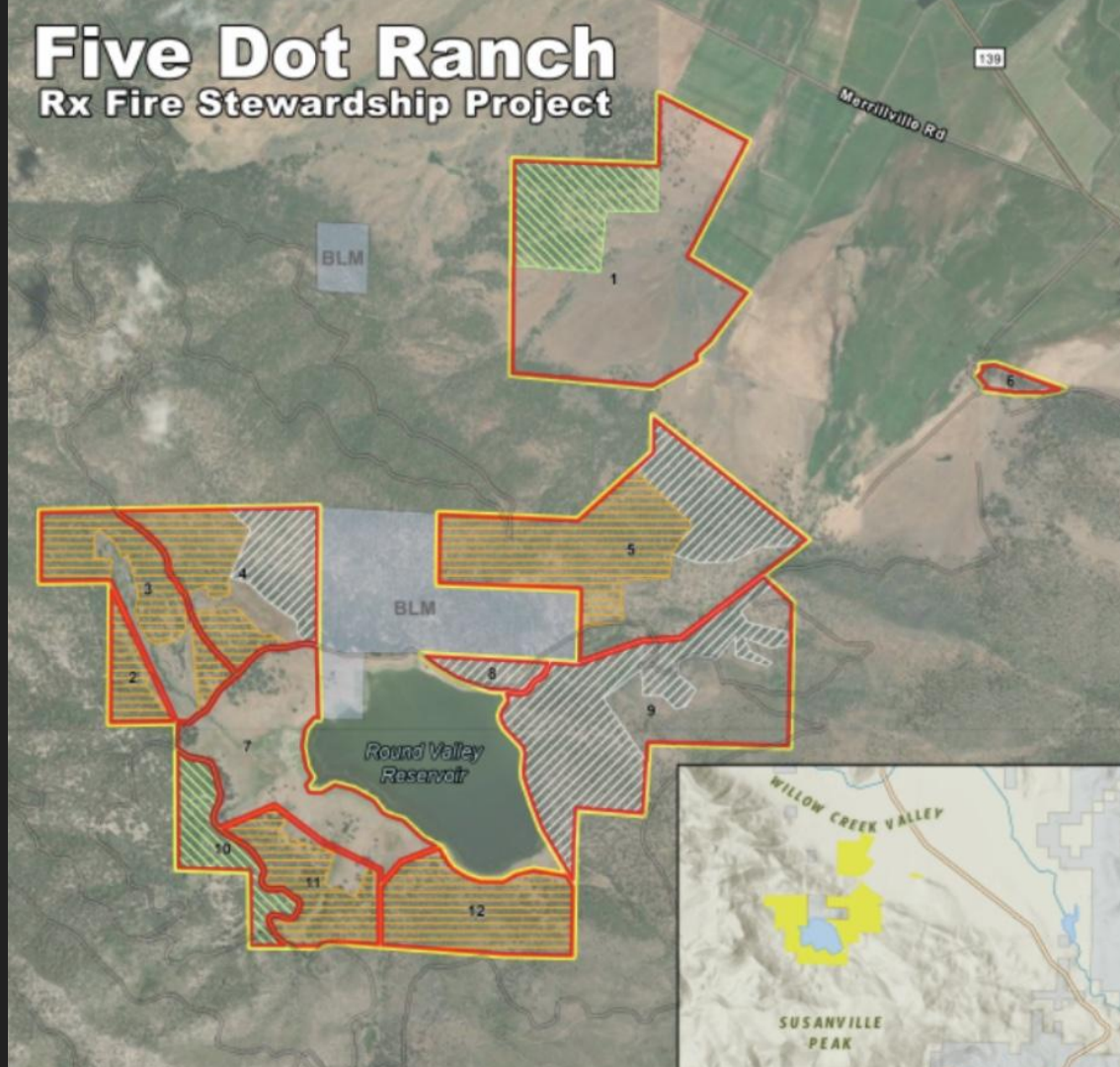


Round Valley Reservoir



Five Dot Ranch

Rx Fire Stewardship Project





Round Valley Reservoir Is an Important Resource for Agriculture and Wildlife

This area needs prescribed fire before uncontrolled catastrophic wildfire kills every tree and reduces this landscape to a brush field, resulting in deforestation, desertification, and reduced water quality.



Terra Fuego
Resource Foundation

Fire Will Always Happen, Wildfire Is Inevitable

Wildfire will eventually happen during the worst possible weather conditions (hot, dry, and windy), when **fire suppression** is impossible.

Remember: The longer fire is absent, the more fuels build up as potential energy, waiting for wildfire.

Indisputable scientific evidence clearly shows that land with a history of frequent fire maintains the greatest resiliency to catastrophic wildfire.

Terra Fuego recommends following scientifically proven land management best practices to avoid losses from wildfire.

We cannot suppress every wildfire, but we can use frequent prescribed fire strategically around our communities. This way, when wildfires happen, there will be very little fuel available to burn.

Terra Fuego

Resource Foundation



Fire Exclusion

In the absence of frequent fire:

- All trees grow with wild abandon
- Tree spacing is unregulated
- Fire-adapted selection for genetic fitness is absent

Trees compete for space and resources:

- Space below ground
- Space above ground
- Water
- Soil nutrients
- Sunlight

This all contributes to unhealthy forests, making forests susceptible to pathogens and catastrophic wildfire.



Management Alternatives

Management alternatives include:

- Chipping
- Mastication
- herbicide
- Thinning
- Clear cutting
- Tree Planting
- Appropriate technology

Management alternatives are minimally effective in providing catastrophic wildfire resiliency unless they are followed by prescribed fire.

Frequent prescribed fire should be part of a long-term plan to maintain the greatest resiliency.

There is no substitute for the use of fire.



Ladder Fuel Redistribution “Reduction” and Project Efficacy

Tax dollar investments in fuel treatments are extended indefinitely if followed up with frequent prescribed fire.

Without frequent prescribed fire, forests and communities are still at risk from catastrophic wildfire. Forests need another fuel treatment every 10-15 years.



Terra Fuego
Resource Foundation

Todd Has Reduced Ladder Fuel on This Land for 30 Years, Demonstrating Knowledge, Commitment, and “Time on Task”

His approach has primarily consisted of chainsaw thinning and “lop and scatter.”

This has helped prevent tree overcrowding, but it has also added to fuel accumulation and lacks the scale required.





Adjacent Property Owner Land Management Practices

Their approach is to clear-cut units.



Terra Fuego
Resource Foundation



Proposed Partnership

Together, the **Five Dot Ranch**, **Terra Fuego**, and the **Lassen Fire Safe Council** have a great chance of securing the next round of grant funding for The Five Dot Ranch Prescribed Fire Stewardship Project, which would be a great pilot project to set precedence - paving the way for an increased pace and scale of frequent prescribed fire on private and public lands.

In the future, Terra Fuego and the Lassen Fire Safe Council can provide Lassen County with a professional, scalable prescribed fire service, increasing local capacity and supporting the local economy, while offering the greatest scientifically proven catastrophic wildfire resiliency for communities in the Wildland Urban Interface.

Thanks for your time today

This presentation is part of a community notification campaign to show community involvement and engagement in this project, supporting future Grant applications.



Terra Fuego
Resource Foundation

