

Active Projects 10/16/2024

Grant / Project Name	Grantor	Treatment Funds Awarded*	Activities/ Treatments to date	Remaining Treatment Funds*	Status	Exp Date
Hog & Sheep Fire Forest Restoration - CCI #619	CALFIRE	\$4,999,855.30	Biomass site prep, herbicide purchase/ application, tree planting for first two rounds of funding. Project is 80% completed.	\$500,000	Final operations ongoing on WMB with 6 machines working on mechanical site prep. Expect to be complete by 11/15/2024	3/31/2025
Shingletown WUI Fuels Treatments - CCI #110	CALFIRE	\$8,978,870.00	Biomass utilization 80% complete, equipment purchase 100% complete, community Treatments 75% complete, mastication treatments 100% complete, emergent brush treatments 80% complete,	\$800,000	Biomass utilization ongoing. Community biomass treatments ongoing. Mastication Complete. Emergent brush treatments ongoing. Community hand thinning / defensible space ongoing. Landowner signups for community treatments ongoing, community chipping program ongoing. On Schedule to complete 12/2024 - 1/2025	3/15/2025
Dyer Mountain WUI Fuels Treatment - CCI #0102	CALFIRE	\$5,727,260.00	Community treatments 100% complete. Emergent brush treatments 100% complete. Biomass utilization treatments 75% complete. Additional mastication acres added, 110% complete.	\$250,000	Mastication Complete. Emergent Brush complete. Biomass commenced Early July and ongoing. On Schedule to complete in next 2 weeks and begin final monitoring and close out.	3/15/2025
Whitmore Forest and Watershed Restoration - CCI #611	CALFIRE	\$4,999,989.12	Mastication 100% complete. Biomass treatments 80% complete. Emergent Brush treatments 100% complete.	\$370,000	Biomass chipping ongoing. Remaining treatments completed. On Schedule to complete 12/2024	3/31/2025
Clear Creek & Hog Flat Fuel Treatment-Direct #112	CALFIRE	\$199,998.30	Mastication 100% complete. Hand treatments 60% complete	\$52,670	Final hand treatments in area of Hamilton Branch and Clear Creek scheduled for late October/ Early November.	3/30/2025
Eastside Communities SPA #018 / Lone Spring SNC #1275	SNC/ USFS	\$1,050,000.00	Draft EA complete. All resource specialist surveys complete for 2024,	\$500,000	Arc surveys and wildlife surveys complete for 2024. Awaiting PNF to advance project. Will seek implementation funding once signed. Will put out fall 2024 RFP for more surveys for 2025.	3/31/2031

* Does not include cost match information

Project	Grantor	Treatment Funds Awarded*	Activities/ Treatments to date	Remaining Treatment Funds*	Status	Exp. Date
Bootssole-SNC #1305	SNC	\$3,671,725.00	SPA #1 and #2 executed with PNF Beckwourth District, Timber Marking/cruising, Layout 100% complete, Mastication 100% completed, hand thinning treatments 100% completed, Biomass 100% completed.	\$90,000	Additional hand thinning acres added in EEZ's. Biomass Treatments will be completed 11/2024.	1/1/2025
Diamond Mountain - SNC #1065	SNC	\$882,087.00	Mastication/ pruning 100% complete. Aspen exclusion treatments 100% complete. Pile burning 90% complete. Impacted by sheep fire.	\$90,000	Prescribed burning planned for fall 2024. Contract awarded. On schedule for 12/2024 completion.	1/1/2026
Honey Lake Valley RCD/LFSC - SPA	NA	NA	MOU - SPA between organizations to assist HLVRCDD with biomass utilization, site prep, and tree planting. Biomass utilization complete on several landowners. Tree planting complete on several landowners.	NA	Biomass utilization complete. Planting complete for 2024. Herbicide ongoing for 2024. Reforestation planned for 2025.	NA
California Fire Safe Council County Coordinator	CFSC	\$94,827.80	2024 program ongoing.	\$47,000	2024 program active. General Meetings, CWPP, Firewise support, 6th grade education program, public outreach and community support. Collaborative group meetings and development ongoing.	12/31/2024
USFS Cradle Valley / Bootssole Dixie Fire Salvage	USFS	2,600,000	Spa complete. Layout complete.	1,700,000	Biomass Chipping to resume once contractor assembles crew. Planning for site prep. RFP planned for late September 2024 for additional salvage/ dead tree removal. Working on a 3rd SPA. Goal is to operate through fall and winter with May 2025 completion.	8/31/2026
Lassen County-Wide Defensible Space Program	CFSC	50,000	Contract awarded for implementation. Deliverables 100% complete.	66,972	Awaiting CFSC to deposit project funds. Amendment needed to add more funds to implementation. On schedule to complete 11/2024.	12/31/2024

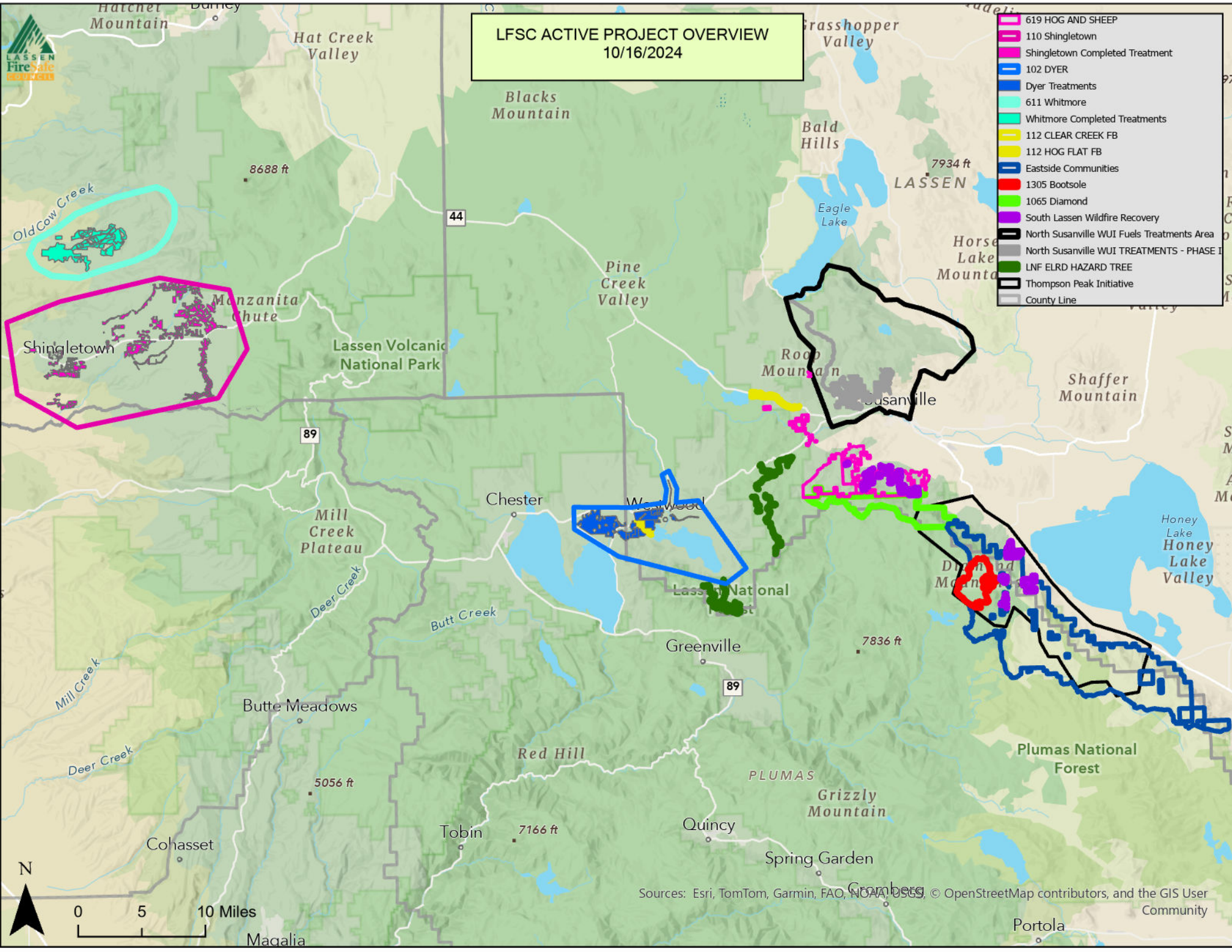
* Does not include cost match information

Project	Grantor	Treatment Funds Awarded*	Activities/ Treatments to date	Remaining Treatment Funds*	Status	Exp. Date
Lassen County Wide Assessment	SNC	\$275,242.00	Agreement executed 7/2024.	\$275,242	RFP for assessment late summer/ fall 2024. Project	10/31/2027
South Lassen Wildfire Recovery Project	CALFIRE	\$6,469,424.33	None	\$6,469,424.33	Awaiting final agreement from calfire	3/15/2030
North Susanville WUI Fuels Treatments	CALFIRE	\$2,999,924.32	None	\$2,999,924	Awaiting final agreement from calfire	3/15/2030
LFSC LNF Dixie Fire Hazard Tree Project	CALFIRE	2,999,987.85	9/11/2024	2,999,987.85	Awaiting final agreement from calfire	3/15/2030

* Does not include cost match information

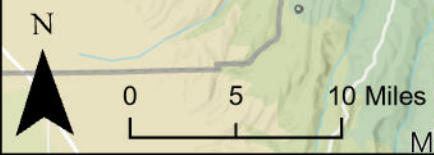
Planned / Proposed Projects 10/16/2024

Project	Treatment Cost / Funds Applied for	Grantor / Program	Planned Project	Status
Plateau / Shingletown Phase II	TBD	TBD	Work with SPI and non industrial landowners to continue to identify priority landscape level fuels reduction areas in WUI. Shingletown/Viola/ otential community treatments.	Potential project meetings ongoing. Engaging potential project partners CEQA clearance for areas not included in current project will begin soon.
Whitmore Forest Health Phase II	TBD	TBD	Work with large landowners to continue landscape level fuels reduction and forest health treatments in areas near community of Whitmore.	Potential project meetings ongoing. Engaging potential project partners CEQA clearance for areas not included in current project will begin soon.
Manton WUI Fuels Treatments	TBD	TBD	Work with Manton Fire Safe Council to continue work that began in 2024. Ponderosa Fire on SPI and large landowners with heavy fuels priority for treatment	Manton FSC and LFSC worked together to implement in 2024. All parties want to expand project. Tehama RCD, Western Shasta RCD and CALFIRE will be brought into planning sessions in November.
South Susanville WUI Treatments	TBD	TBD	Dead/ Dying/ Hazard Tree removal, biomass fuels treatments, mastication, herbicide.	Approached by several landowners about separate projects. LFSC would like to combine into a larger landscape level project. CEQA CLEARANCE Planned fall 2024.
Eastside Communities: Lone Spring Project - Phase 1	TBD	TBD	Hazardous fuels reduction in Lonespring project area of Eastside Communities	Arch surveys and Wildlife surveys completed for Lonespring area in 2024. Work with PNF on identifying areas/ funding for implementation.
Big Valley Mountain Phase II	TBD	TBD	Work with CALFIRE and large landowners to identify next areas of treatment.	SNC 966 funds can pre-clear CEQA once project is identified.
Harvey Country Forest Health Project	TBD	TBD	Work with large landowners to continue landscape level fuels reduction and forest health treatments inbetween highway 44 and Eagle Lake	SNC 966 funds can pre-clear CEQA once project is identified.
Highway 44 Fuelbreaks	TBD	TBD	Work with large to establish new and maintain existing fuelbreaks and continue landscape level fuels reduction and forest health treatments in areas along highway 44 corridor.	Potential project meetings ongoing. Engaging potential project partners CEQA clearance for areas not included in current project will begin soon.
D-Space 25-27	TBD	TBD	Build on success of Defensible space program and add dead/dying hazard tree removal component for senior/ disabled / disadvantaged communities.	Apply for funding.
Cradle Valley	300,000	USFS	Assisting USFS in reforestation of Dixie fire on Eastside communities - Cradle Valley	Draft budget and agreement submitted. LFSC will review once USFS finalizes. Weeks out.



LFSC ACTIVE PROJECT OVERVIEW
10/16/2024

- ▬ 619 HOG AND SHEEP
- ▬ 110 Shingletown
- ▬ Shingletown Completed Treatment
- ▬ 102 DYER
- ▬ Dyer Treatments
- ▬ 611 Whitmore
- ▬ Whitmore Completed Treatments
- ▬ 112 CLEAR CREEK FB
- ▬ 112 HOG FLAT FB
- ▬ Eastside Communities
- ▬ 1305 Bootssole
- ▬ 1065 Diamond
- ▬ South Lassen Wildfire Recovery
- ▭ North Susanville WUI Fuels Treatments Area
- ▭ North Susanville WUI TREATMENTS - PHASE I
- ▬ LNF ELRD HAZARD TREE
- ▭ Thompson Peak Initiative
- ▭ County Line



Sources: Esri, TomTom, Garmin, FAO, NOAA, USGS © OpenStreetMap contributors, and the GIS User Community