

Lassen County Community Wildfire Protection Plan 2011 Work Plan

Lassen County



March 2011



Representatives of resource, fire planning and prevention interests met on February 1, 2011 to develop the Lassen County Community Wildfire Protection Plan 2011 Work Plan. The process began in December of 2009, through on line collaboration and reporting, and it was completed in late March of 2011.

Pictured at the annual meeting above are, from left to right: Dale Meese, CalFire; Al Savage, BLM Alturas Field Office; Priscilla Peterson & Mike Holmes, Lassen National Forest; Dan Douglas, Lassen County Transportation & LCFSC; Karl Todd, BLM-Eagle Lake Field Office; Cathy Dirden, LCFSC; Dustan Mueller, Plumas National Forest; Tom Esgate, LCFSC; Mark Pustejovs, RPF, Sierra Pacific Industries, Dave Ramirez, Lassen National Forest; Laurence Crabtree, Modoc National Forest; Nikki, Bow Wow; Boyd Turner Modoc National Forest; Phil Nemir, RPF; Heather Munn, Plumas National Forest; Jim Miguel, Modoc National Forest ; Frank Stewart, RPF, CAFSC and Quincy Library Group; Dale Newby, Plumas National Forest; Jerry Hurley, Plumas Fire Safe Council; Cindy Noble; Sierra County Fire Safe Council; Mike Mitzel, RPF, Sierra Pacific Industries; Bob Pyle, Lassen County Supervisor; Ivan Houser, CalFire; Courtney Wood, Plumas National Forest.

Table of Contents

Priority Private Land Project List	v
2011 Wildland Urban Interface (WUI) Map	1
2011 CWPP Base Map	2
Private Land Projects	
Lassen County Fire Safe Council, Inc. Narrative	3
Education Program	4
Clear Creek	5
Day Lassen Bench	6
Diamond Mountain	7
Doyle	8
Janesville	9
Lake Forest	10
Little Valley	11
Milford	12
Spaulding	13
Susanville Fuel Reduction & Watershed Restoration Project	14
Private & Public Land Projects	
Cooperative Sagebrush Steppe Restoration Initiative	15
Ash	16
Ash Valley Watershed Restoration	17
Mapes	18
McBride Springs	19
McClelland	20
South Ash Valley IV	21
Tribal Land Projects	
Susanville Indian Rancheria	
Cradle Valley	22
Upper Rancheria Fuel Break	23
Public Agency Projects	
Bureau of Land Management, Alturas Field Office Narrative	24
Ash Valley Ranch Juniper Reduction	25
Blue Door Juniper Reduction	26
Cold Springs Hand Treatment Juniper Reduction	27
Day Road Shaded Fuel Break 7 Pile Burn	28
Johns Valley RX	29
Knox Mountain Timber Sale	30
Mitchell Hill Juniper Reduction	31
South Ash Valley Juniper Reduction	32

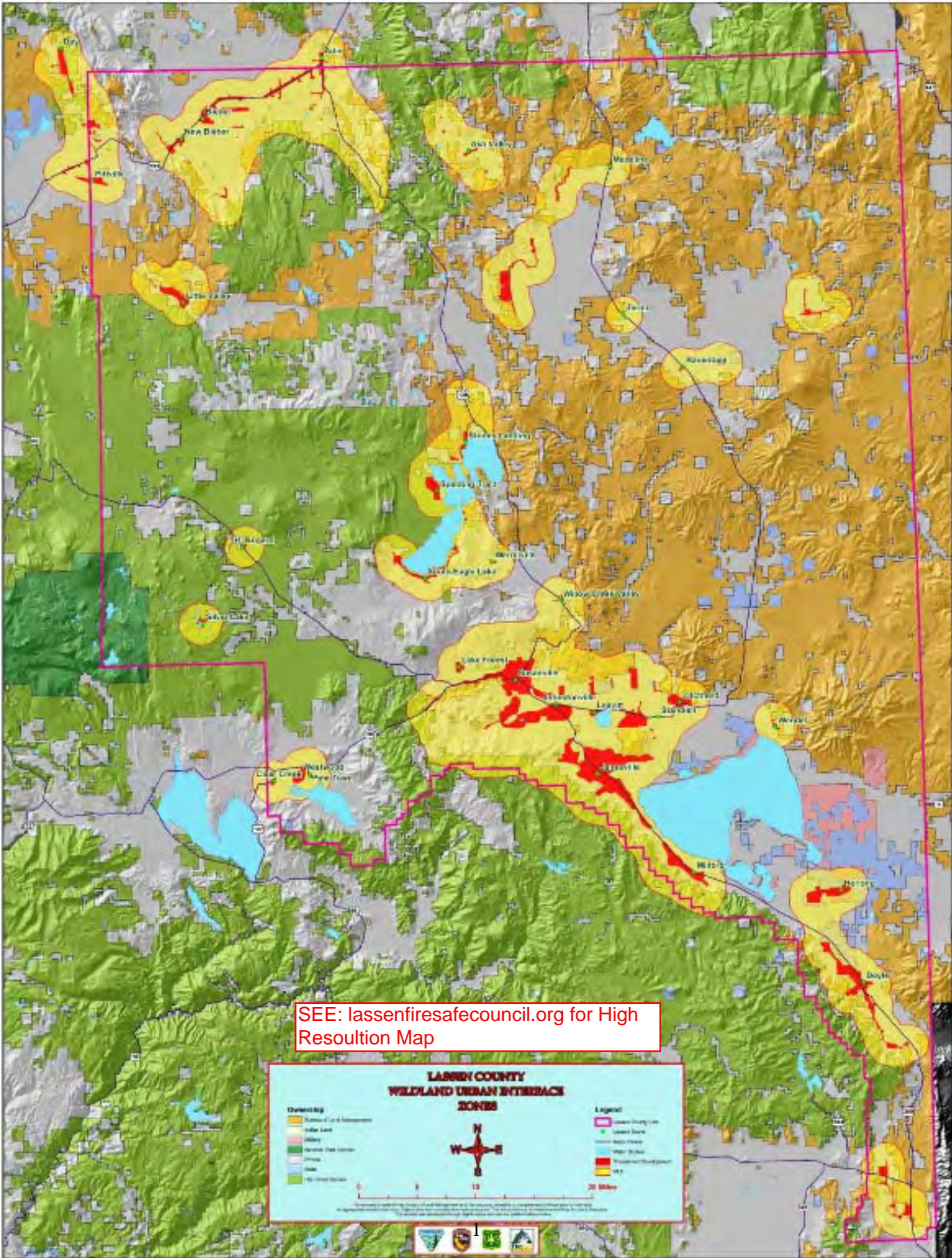
South Mitchell Hill Juniper Reduction	33
Stipa Harter RX	34
Widow Peak Thinning	35
Williams Ranch Juniper Reduction	36
Bureau of Land Management, Eagle Lake Field Office Narrative	37
Bald Hills	39
Diamond Mountain Sanitation	40
Dodge Reservoir Stewardship	41
Fredonyer Peak Stewardship	42
North Horse Stewardship	43
South Cleghorn Stewardship	44
South Grasshopper Stewardship	45
Stones-Bengard Hazardous Fuels Reduction	46
Lassen National Forest, Eagle Lake Ranger District	
Cowbell Thinning Project	47
Crater Underburn	48
North Diamond WUII NEPA	49
Orphan DFPZ STWD	50
Pole Spring Plantation Mastication	51
Polydent DFPZ STWD	52
Signal Underburn	53
Willow DFPZ	54
Modoc National Forest, Big Valley Ranger District	
Ash Vegetation Treatments	55
Willow Creek Highway Safety Improvement Project	56
Plumas National Forest Narrative	57
CalFire Lassen Modoc Unit Fire Plan	

Incorporated into the Lassen County CWPP 2009 Work Plan by Reference:

www.fire.ca.gov

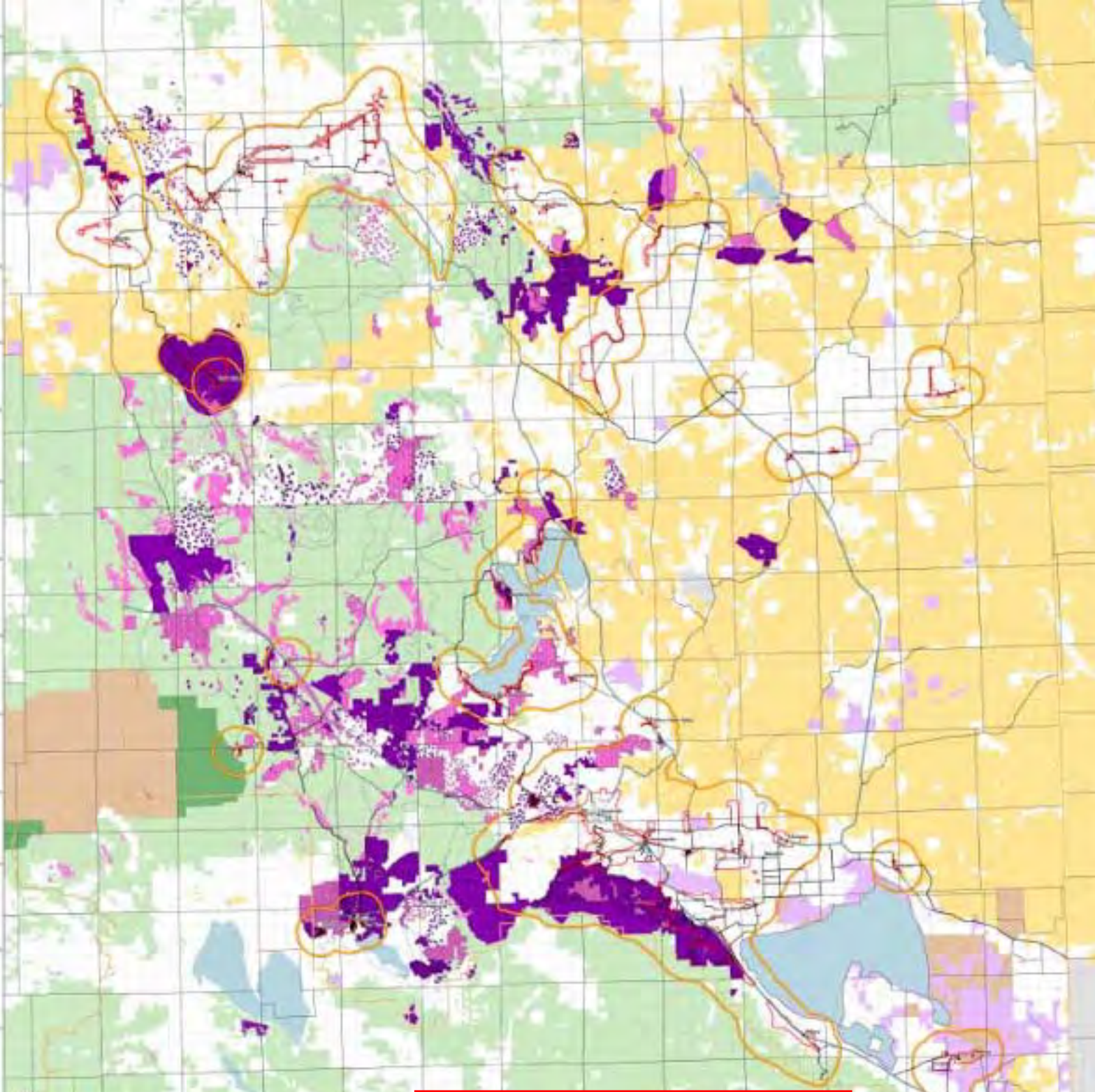
2011 CWPP Work Plan Private Land Priority Projects

- 1. Janesville**
- 2. Milford**
- 3. Little Valley**
- 4. Doyle**
- 5. Spaulding**
- 6. Diamond Mountain**
- 7. Ash Valley IV**
- 8. Ash**



SEE: lassenfiresafecouncil.org for High Resolution Map





SEE: lassenfiresafecouncil.org for High Resolution Map

Lassen County Fire Safe Council
 County Fire Plan Base Map
 2 February 2010

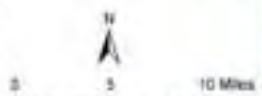
Fuel Reduction Projects

- | | |
|---|----------------------------------|
| USFS Projects | BLM Projects |
| Assess/Completed | Assess/Completed |
| Planning/Progress | Planning/Progress |
| Individual Timberlands | Other Private Timberlands |
| Assess/Completed | Assess/Completed |
| Planning/Progress | Planning/Progress |
| Lassen County Fire Safe Council Projects | |
| Assess/Completed | |
| Planning/Progress | |

- | | |
|--------------------------|--------------------------------|
| WUI | Wildland-Urban Interface (WUI) |
| Conservation | |
| Ownership | |
| Native Forest | |
| BLM | |
| NPWS and Other Private | |
| State and Local | |
| Other Ownership | |
| Background Layers | |
| Major Roads | |
| Secondary Roads | |
| County Boundary | |
| Waterbodies | |



Disclaimer: The Lassen County Fire Safe Council does not warrant the accuracy of the information on this map. The map is designed for general information only. Accuracy and completeness of information is not guaranteed. The Council is not responsible for any errors or omissions on this map. The Council is not responsible for any damages or losses resulting from the use of this map. The Council is not responsible for any damages or losses resulting from the use of this map.





Lassen County Fire Safe Council, Inc.

PO Box 816
Susanville, CA 96130

Tom Esgate
Managing Director
(530) 310-0146

twesgate@sbcglobal.net

Cathy Dirden
Secretary
(530) 251-5560

mcdirden@hotmail.com

March 31, 2011

This year marks the 5th year that the Lassen County Community Wildfire Protection Plan (CWPP) Working Group has gathered, reviewed and ranked projects and also reviewed and adopted changes to the Wildland Urban Interface boundaries throughout the county. Each year we are finding more ways to work collaboratively together.

Lassen County Fire Safe Council, Inc. continues to build on our strong partnerships and we have an aggressive program of active and planned fuel treatments. We are also ramping up the pace of getting communities organized through the *Firewise Communities USA* program. Last year Clear Creek and Lake Forest became the 5th and 6th communities to receive *Firewise* recognition.

Part and parcel of this *Firewise* effort is our one on one contact with residents through our Risk Assessment in the Home Ignition Zone consultations. Here residents learn what they can do to reduce structural ignitability in the advent of a nearby wildfire. Almost 200 were conducted last year and we'll exceed that number in 2011. One important point to remember: **Many of the homes that are lost in wildfires are ignited by embers from a fire a substantial distance away, and then the home ignites the adjacent vegetation, not vice versa!** As we say in our homeowner consultations: "This new information is standing things on their head in California where there is a huge and important emphasis on defensible space." Just having defensible space will not protect the home from an ember shower, one must also address structural ignitability. We're getting rave reviews from residents and we often hear "I had no idea..." when we finish our visits.

Last year we set a record for acres treated within our communities with over 700 completed in Janesville, Lake Forest, and also in Elysian Valley where the Lassen National Forest stepped up and treated an additional 160 acres. This year we'll be on track to match that effort in the Archery Childrens/Elysian Valley communities and in Lake Forest where we are working with residents and our partner Sierra Pacific Industries is treating around the community.

None of our work would be possible without the Title III Fund financial support that has been granted to us by the Lassen County Board of Supervisors. They support our activities and in turn we leverage these funds to bring more fuel treatments and more *Firewise*/*Fire Safe* programs to our communities. That helps protect residents and it helps residents protect themselves.

A big thank you to all our partners in the Lassen County CWPP Working Group,

Tom Esgate,

Managing Director

Lassen County 2011 CWPP Work Plan

WUI Area: Throughout Lassen County

Funding: Funded – Title III

2011 Implementation

Acres: N/A

Agency or Agencies: Lassen County Fire Safe Council

Project Name: Education Program

Project Coordinates: N/A

Summary of Project: LCFSC Education Program will implement it's "Firewise in the Classroom" 6th grade educational program to the Big Valley School District, Shaffer School District and Susanville School District. The program will be presented at the Big Valley Intermediate, Shaffer and Diamond View Schools this spring. This will bring an additional 170 students into our education program. In addition, we will be conducting a County Superintendent approved County-Wide 6th grade teacher "In-Service" training on the Firewise in the Classroom curriculum in order to make sure all teachers are presenting the classroom program correctly completely and successfully as designed. In the fall 2011/2012 school year we will have Richmond School presenting it's 3rd year education program, Janesville, Johnstonville, Fort Sage, and Fletcher-Walker schools presenting their 2nd year program. Long Valley Elementary School will be presenting it's first year of the Firewise in the Classroom curriculum in the fall of the 2011/12 school year. This final school in Lassen County will mean the entire 6th grade classes throughout Lassen County will be presenting the classroom educational program.

The LCFSC Education Director will also be visiting several communities this year including the Fire Prevention Exposition at the McAuthur Fairgrounds reaching into the northern portion of Lassen County, Outreach will be provided to the Doyle Community with an educational booth to be setup at the annual Doyle Days event. We will also be visiting the communities of Milford, Clear Creek and Lake Forest.

In addition to the above our third "Living with Fire" newspaper educational pamphlet will be placed into the entire circulation of the Lassen County Times and Westwood Pine Press local newspapers this summer. We will focus information on homeowner preparations in facing an ember attack on their property and how to mitigate the ember onslaught on their home and property. We will also focus on implementing our Emergency Responder House Numbering Signage project.

Lassen County CWPP 2011 Work Plan

WUI Area: Westwood-Clear Creek

Funding: Funded

2011 Implementation

Number of Acres: 700

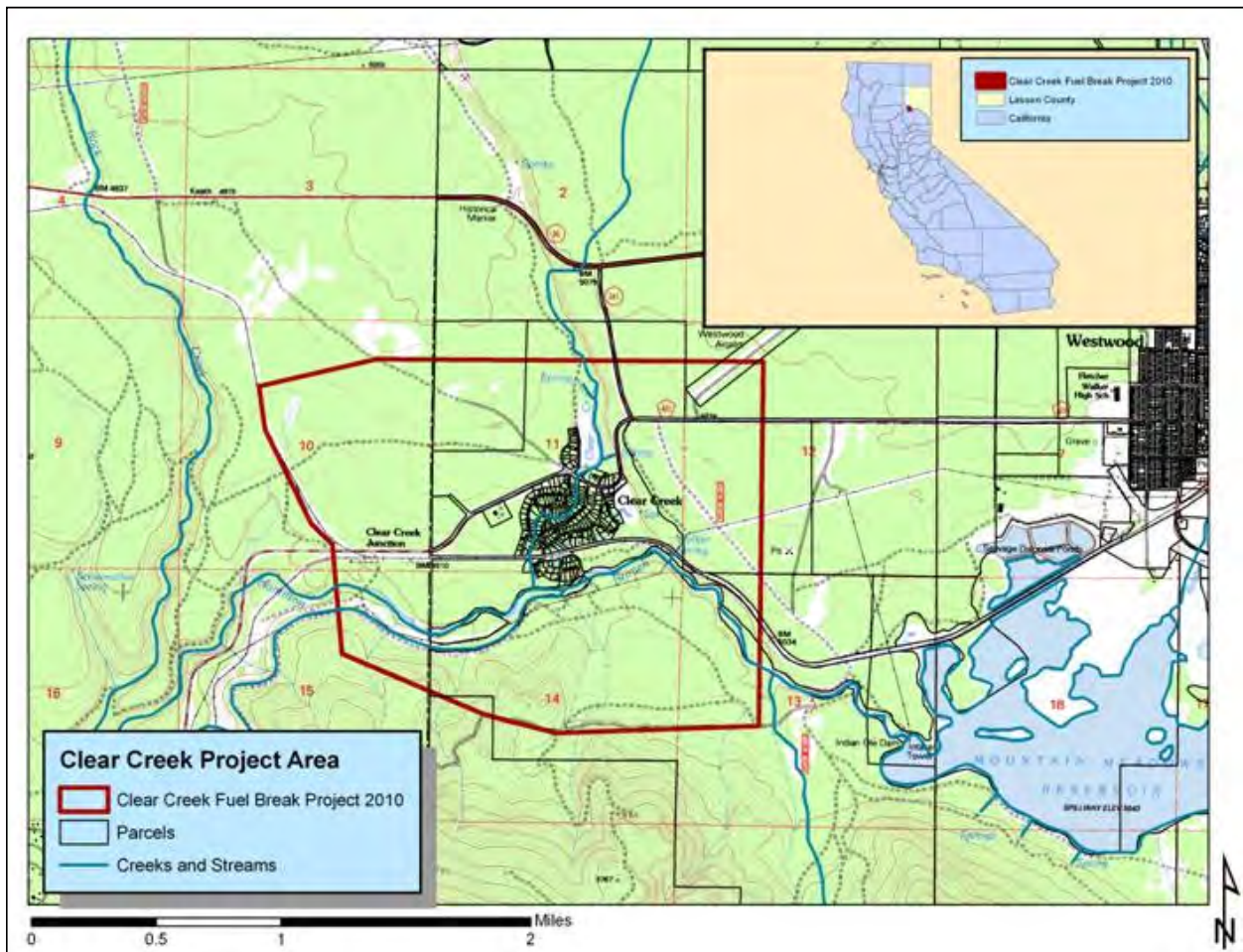
Agency or Agencies: LCFSC, SPI, CalFire

Project Name: Clear Creek Landscape Fuel Treatments and Risk Assessments

Project Coordinates: N40.29713 W121.05630

Summary of Project: LCFSC has received preliminary notification of award of funds to perform landscape scale fuel treatments within and around the Clear Creek community with its partner SPI. Forest stands will be thinned and brush fuels will be masticated where they pose a threat to homes and/or are within potential evacuation corridors. Biomass utilization of material will be used to reduce costs. We will also perform Risk in the Home Ignition Zone/structure ignitability assessments with community residents. We plan to work with CalFire conservation crews for some hand treatments around the community.

Project Map:



Lassen County CWPP 2011 Work Plan

WUI Area: Day Lassen Bench

Funding: Funded

2011 Implementation

Number of Acres: 100

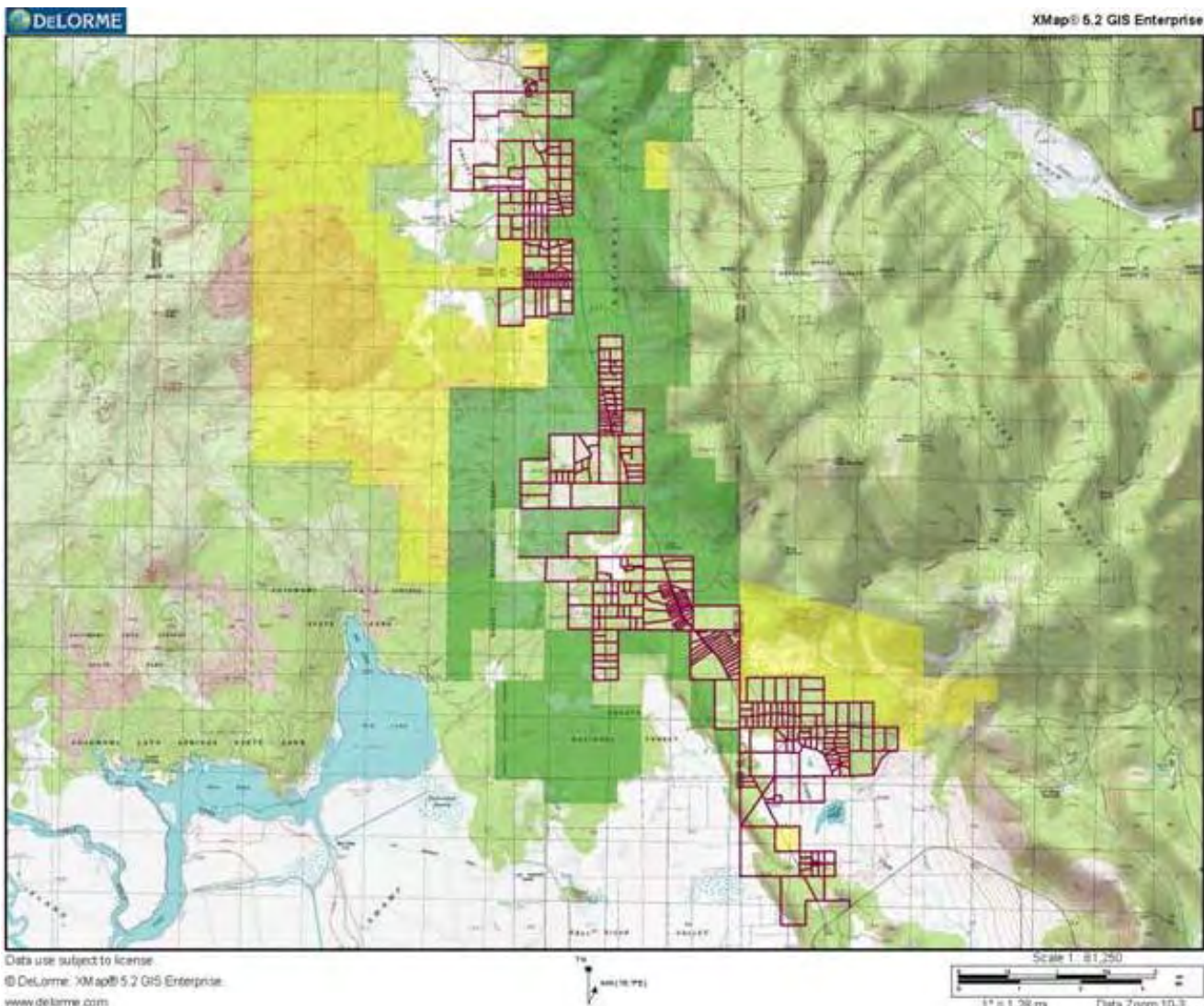
Agency or Agencies: LCFSC, DLBFSC, LNF

Project Name: Day Lassen Bench III Fuel Reduction and Risk Assessments

Project Coordinates: N41.1538 W120.3539

Summary of Project: DLBFSC & LCFSC are continuing their partnership with fuel treatments and Risk in the Home Ignition Zone/structure ignitability assessments in the community. Work is being funded through the Sierra Nevada Conservancy, which was placed on hold due to the state budget crisis in 2009 but is now authorized to proceed again. Work consists of thinning/shearing/chipping of trees and mastication of brush. Almost 1,500 acres have been completed to date. The partners plan to treat at least an additional 100 acres in 2011 and they have been allocated Title III funds from Modoc County to support their Firewise Communities USA activities.

Project Map:



Lassen County CWPP 2011 Work Plan

WUI Area: Susanville to Doyle

Funding: Planning/Not Funded

2011 Planning

Number of Acres: 00000

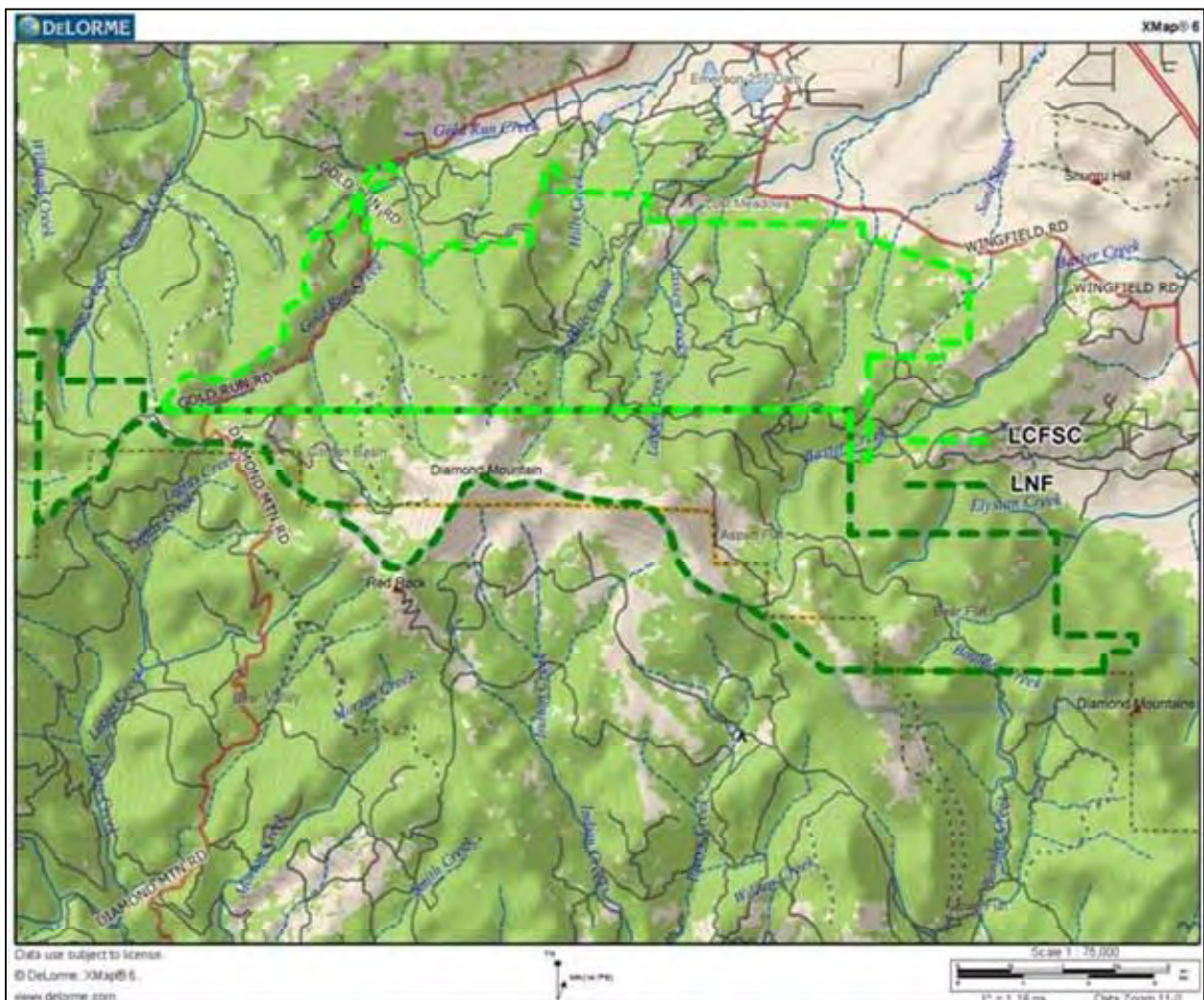
Agency or Agencies: LCFSC, PCFSC, LNF, PNF

Project Name: DIAMOND MOUNTAIN

Project Coordinates: N40.3214 W120.6690

Summary of Project: LCFSC began preliminary discussions in 2010 with PNF, LNF & Plumas FSC on a collaborative fuels treatment project along and below Diamond Mountain south of Susanville and possibly expand the project south and east toward Doyle. The intent of this early stage of planning is to gauge interest in a large landscape scale project that would meet the intent of the Collaborative Forest Landscape Restoration Program. LCFSC would be the lead for private landowner contact within the project area. It is anticipated that the LCFSC will be asking for assistance from CAFSC, CalFire, USFS and other sources for funding.

Project Map:



Lassen County CWPP 2011 Work Plan

WUI Area: Doyle

Funding: Planning/Not Funded

2011 Planning

Number of Acres: ----

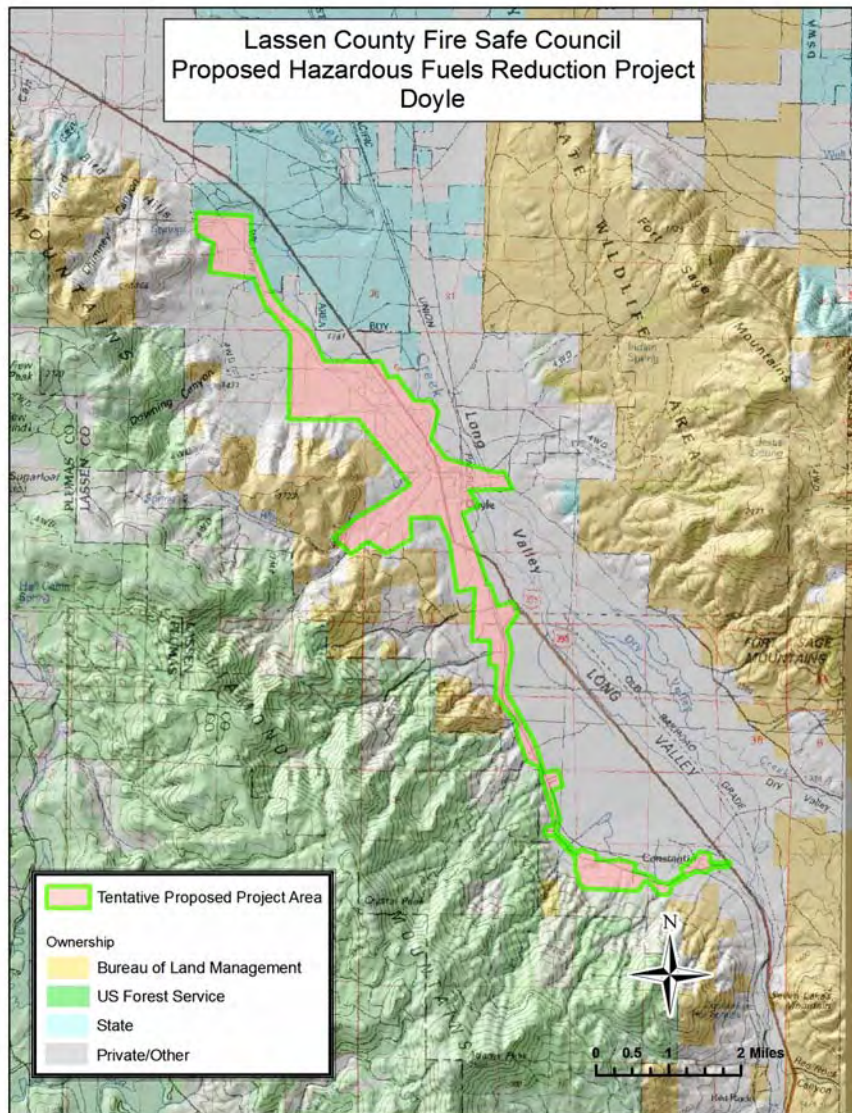
Agency or Agencies: LCFSC, PNF, BLM

Project Name: Doyle Fuel Treatments and Risk Assessments

Project Coordinates: N40.0273 W120.1030

Summary of Project: LCFSC, in conjunction with PNF and BLM, is in the initial planning stage of assisting the community of Doyle in gaining Firewise Communities USA status/certification and with a possible fuels treatment project that could include fuel breaks in sagebrush areas surrounding the community. Also under consideration could be private land forest thinning with cooperating landowners that are adjacent to PNF. Risk Assessments in the Home Ignition Zone/structural ignitability assessments would also be conducted with community residents. LCFSC is making its initial contacts with community members.

Project Map:



Lassen County CWPP 2011 Work Plan

WUI Area: Janesville

Funding: Planning/Not Funded

2011 Implementation

Number of Acres: 400

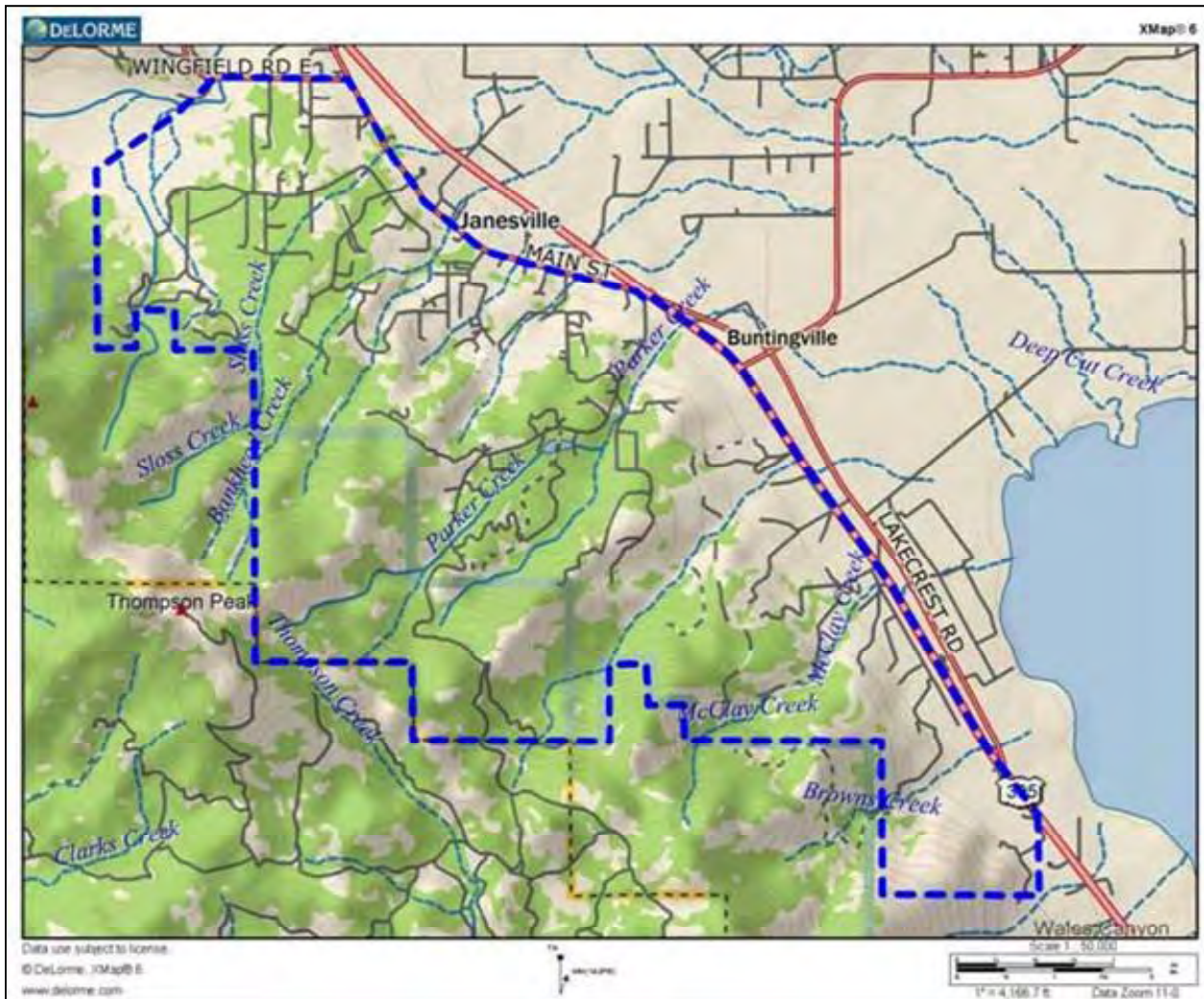
Agency or Agencies: LCFSC, Janesville Town Council, PNF

Project Name: Janesville Fuel Treatments and Risk Assessments

Project Coordinates: N40.26777 W120.49461

Summary of Project: Project anticipates the continuation of last year's fuel treatments and Risk Assessments in the Home Ignition Zone/structural ignitability assessments. Lassen RAC funding has been requested. The planned treatments include developing defensible space around homes and potentially 400 additional acres of landscape scale fuel treatments. Forest stands would be thinned and brush fuels would be masticated where they pose a threat to homes and/or are within potential evacuation corridors. Biomass utilization of material would be used to reduce costs. Project area is primarily private land of a residential character with some non-industrial timber land. USFS, BLM, CalFire, CFSC, Lassen County RAC and Lassen County Board of Supervisors have previously assisted with funding and/or consultation.

Project Map:



Lassen County CWPP 2011 Work Plan

WUI Area: Susanville

Funding: Funded

2011 Implementation

Number of Acres: 420

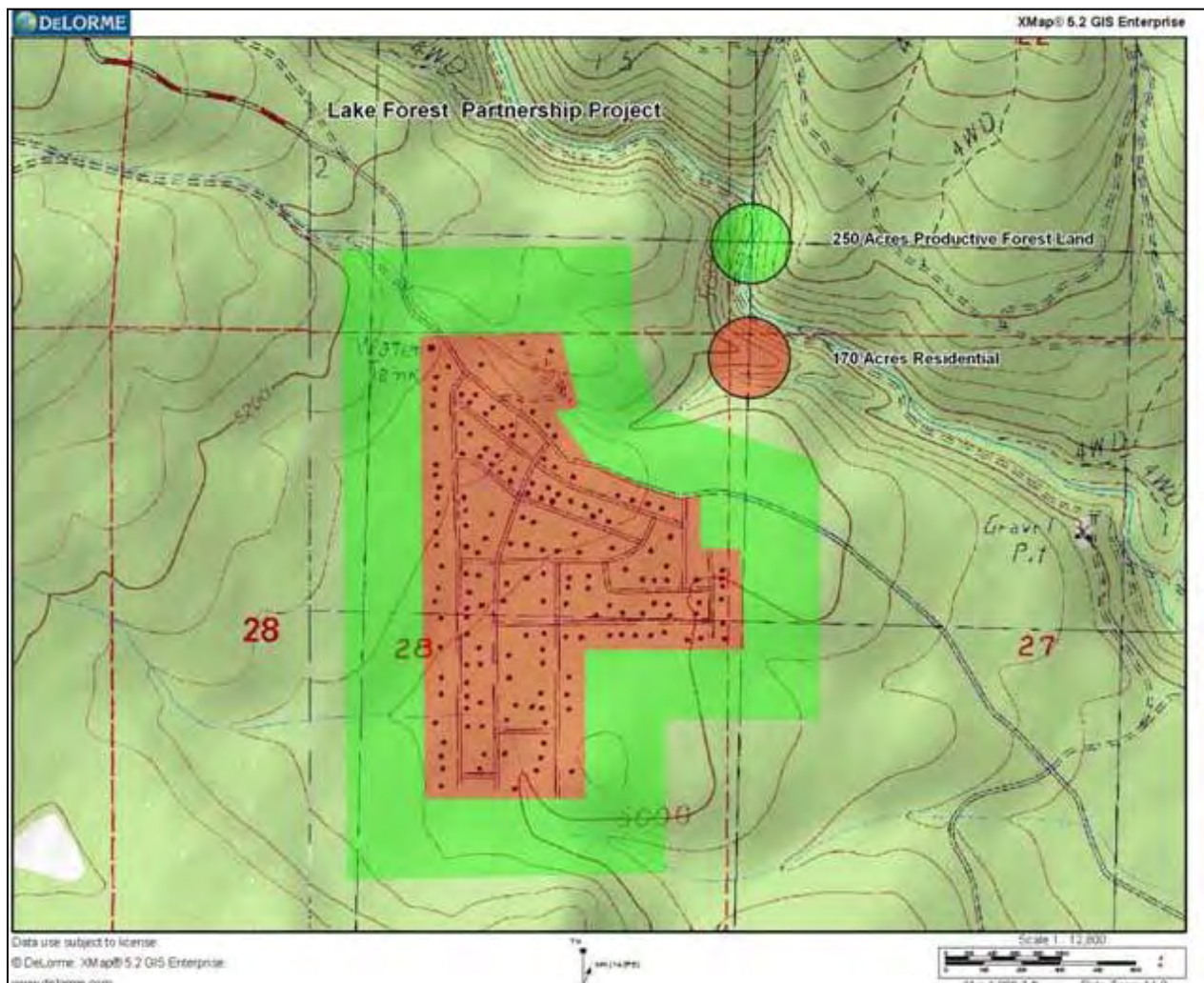
Agency or Agencies: LCFSC, SPI

Project Name: Lake Forest Fuel Treatments and Risk Assessments

Project Coordinates: N40.43368 W120.74358

Summary of Project: LCFSC with its partner SPI is implementing fuel treatments and Risk in the Home Ignition Zone/structure ignitability assessments within and around the Lake Forest community. Brush will be masticated and forest stands will be thinned. SPI will be the lead for fuel treatments around the Lake Forest community and LCFSC will be the lead for treatments within the community and for conducting the risk assessments. USFS, CFSC, Lassen County RAC, Lassen County Board of Supervisors and the Lake Forest Fire District have assisted with funding and consultation.

Project Map:



Lassen County CWPP 2011 Work Plan

WUI Area: Little Valley

Funding: Planning/Not Funded

2011 Planning

Number of Acres: ---

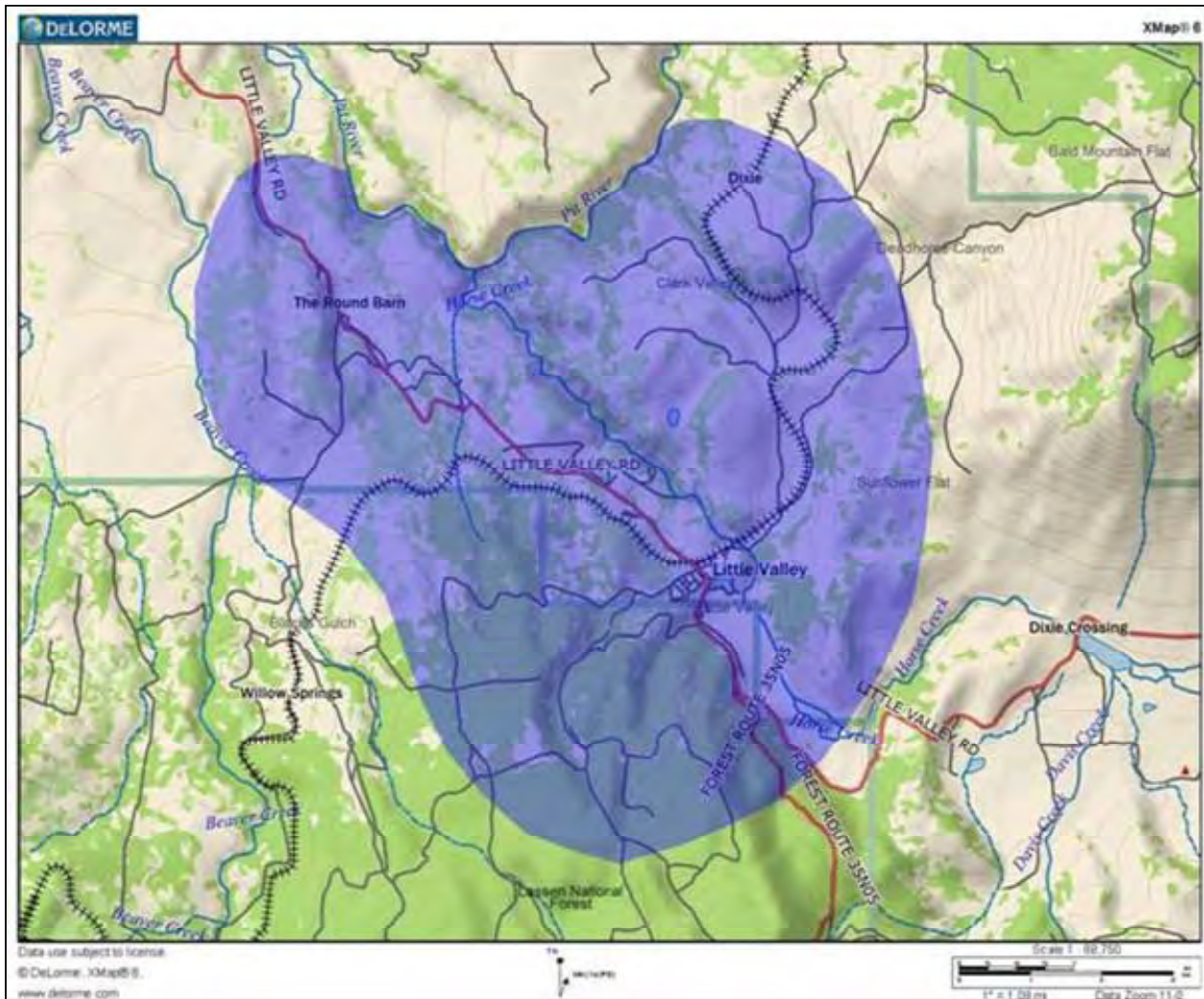
Agency or Agencies: LCFSC, CSSRI

Project Name: Little Valley

Project Coordinates: N40.9058 W121.1947

Summary of Project: LCFSC, with CCPI partners PRCD & SIR, will be developing plans and applying for implementation funds to implement fuel reduction projects and perform Risk in the Home Ignition Zone/structure ignitability assessments within and around the Little Valley community in Lassen County. LCFSC and our partners may be asking for assistance from CAFSC, CalFire, NRCS, USFS and BLM. It is anticipated that initial treatments will be on a landscape scale.

Project Map:



Lassen County CWPP 2011 Work Plan

WUI Area: Milford

Funding: Planning/Not Funded

2011 Planning

Number of Acres: ----

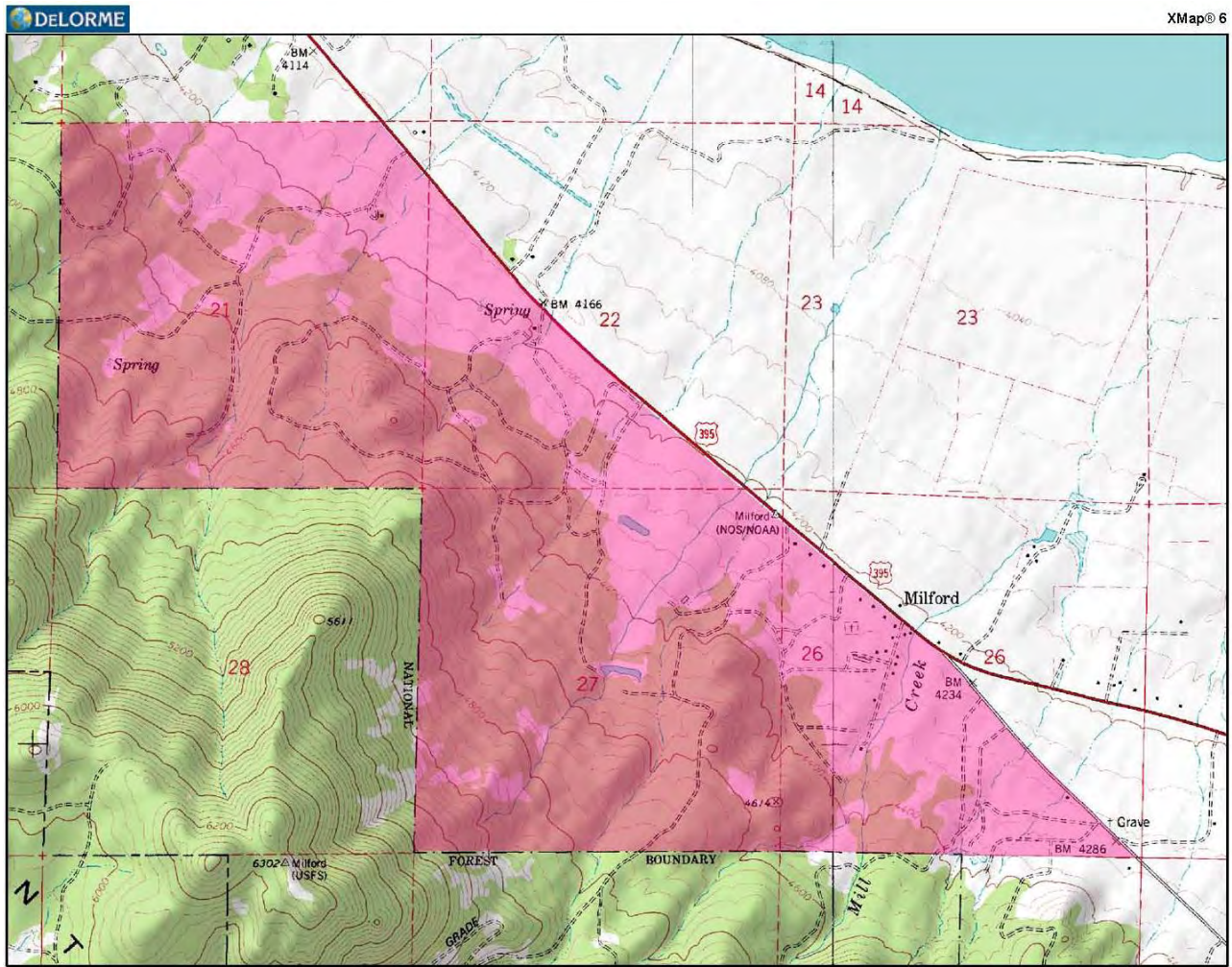
Agency or Agencies: LCFSC, PNF

Project Name: Milford Fuel Treatments and Risk Assessments

Project Coordinates: N40.1768 W120.3885

Summary of Project: LCFSC, in conjunction with PNF, is in the initial planning stage of assisting the community of Milford in gaining Firewise Communities USA status/certification and with a possible fuels treatment project. Risk Assessments in the Home Ignition Zone/structural ignitability assessments would also be conducted with community residents. LCFSC is making its initial contacts with the Milford Fire Department and the community association.

Project Map:



Data use subject to license.
© DeLorme, XMap® 6.
www.delorme.com



Lassen County CWPP 2011 Work Plan

WUI Area: Spalding

Funding: Planning/Not Funded

2011 Planning

Number of Acres: 40

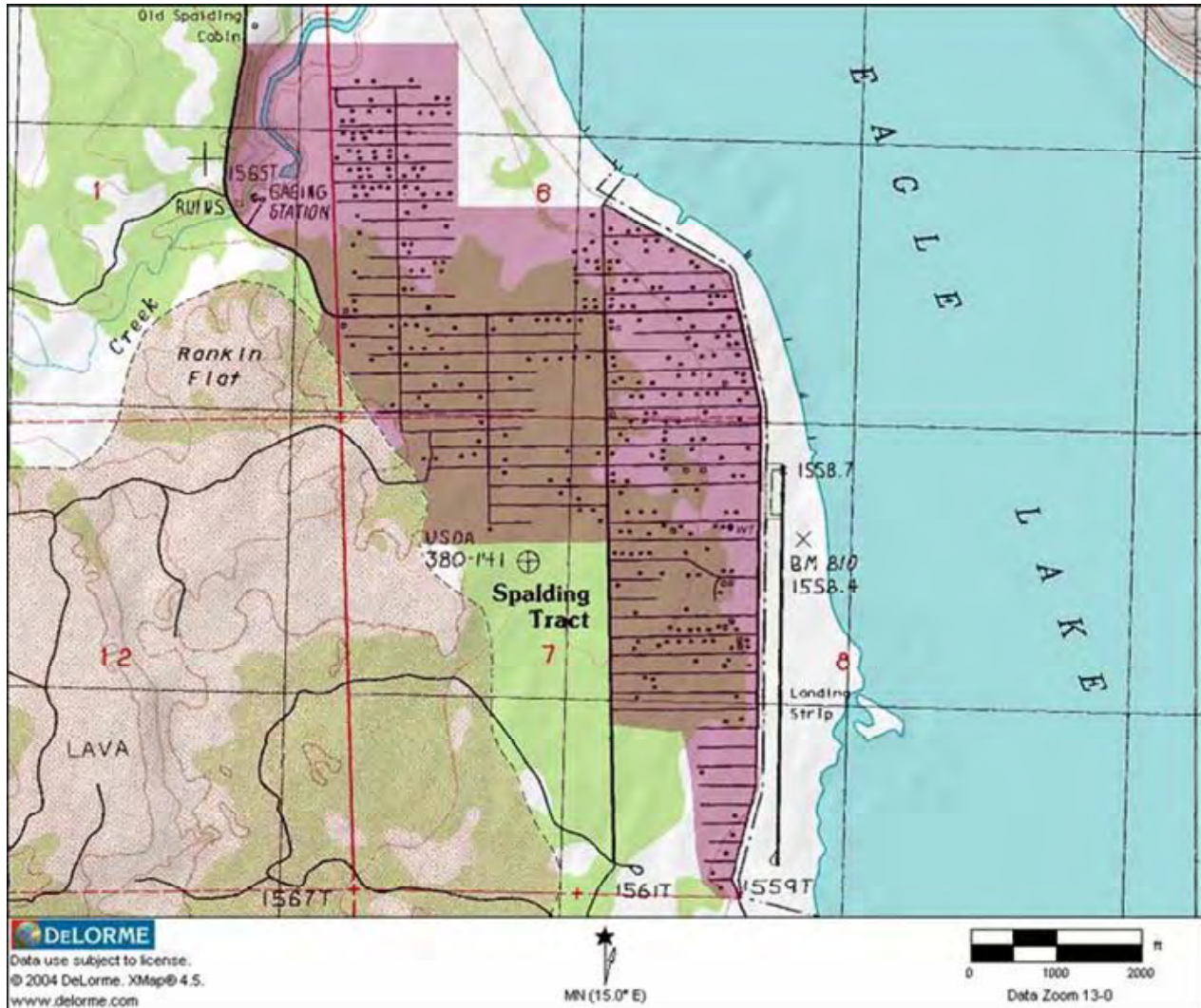
Agency or Agencies: LCFSC, LNF

Project Name: Spaulding Fuel Reduction Planning and Risk Assessments

Project Coordinates: N40.6573 W120.7759

Summary of Project: LCFSC will be applying for funds to perform risk assessments in the home ignition zone and fuel reduction treatments within and around the Spaulding community in Lassen County. Work will complement previously completed work by LNF. We may be asking for funding and/or assistance from CAFSC, CalFire, Lassen County RAC, USFS and BLM.

Project Map:



Lassen County CWPP 2011 Work Plan

WUI Area: Susanville

Funding: Funded

2011 Implementation

Number of Acres: 1200

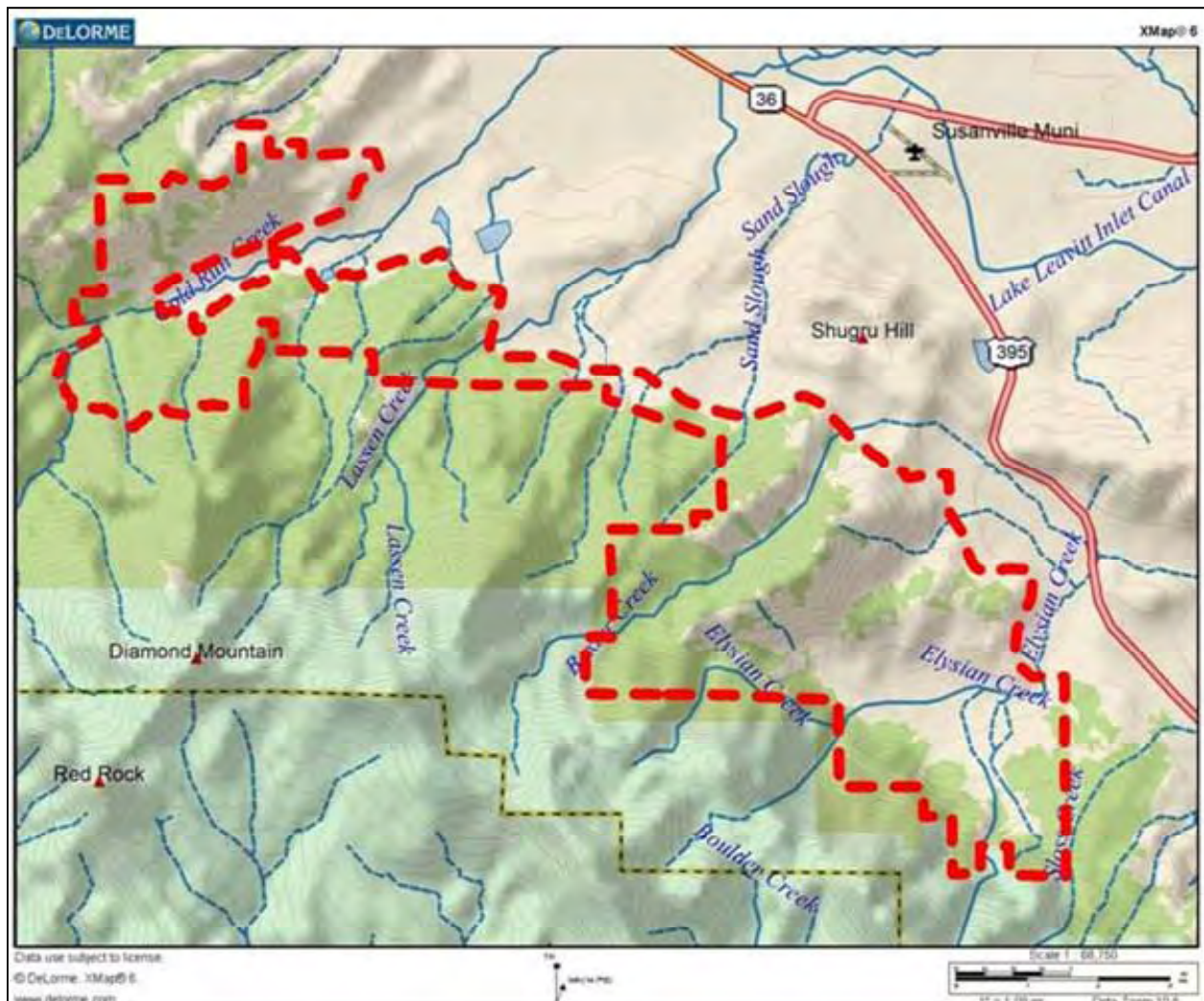
Agency or Agencies: LCFSC, LNF

Project Name: Susanville Fuel Treatments and Risk Assessments

Project Coordinates: 40.3429 N 120.6648

Summary of Project: Project is a continuation of our 2007 project and includes fuel treatments and Risk in the Home Ignition Zone/structure ignitability assessments. The fuel treatments include developing defensible space around homes and potentially 1,200 additional acres of landscape scale fuel treatment acres. Invasive juniper will be removed in the Gold Run areas. Brush fuels will be masticated where they pose a threat to homes and/or are within potential evacuation corridors. Biomass utilization of material will be used to reduce costs. Project area is primarily private land of a residential character with some non-industrial timber land. Project complements work completed in 2010 by LNF. USFS, CFSC, SNC, CalFire, NRCS, Lassen RAC, Pit RCD, Lassen County Board of Supervisors and the Susan River FPD have assisted with funding and/or consultation.

Project Map:



Lassen County CWPP 2011 Work Plan

WUI Area: Various in NW Lassen County

Funding: Partially Funded

2011 Implementation

Number of Acres: ---

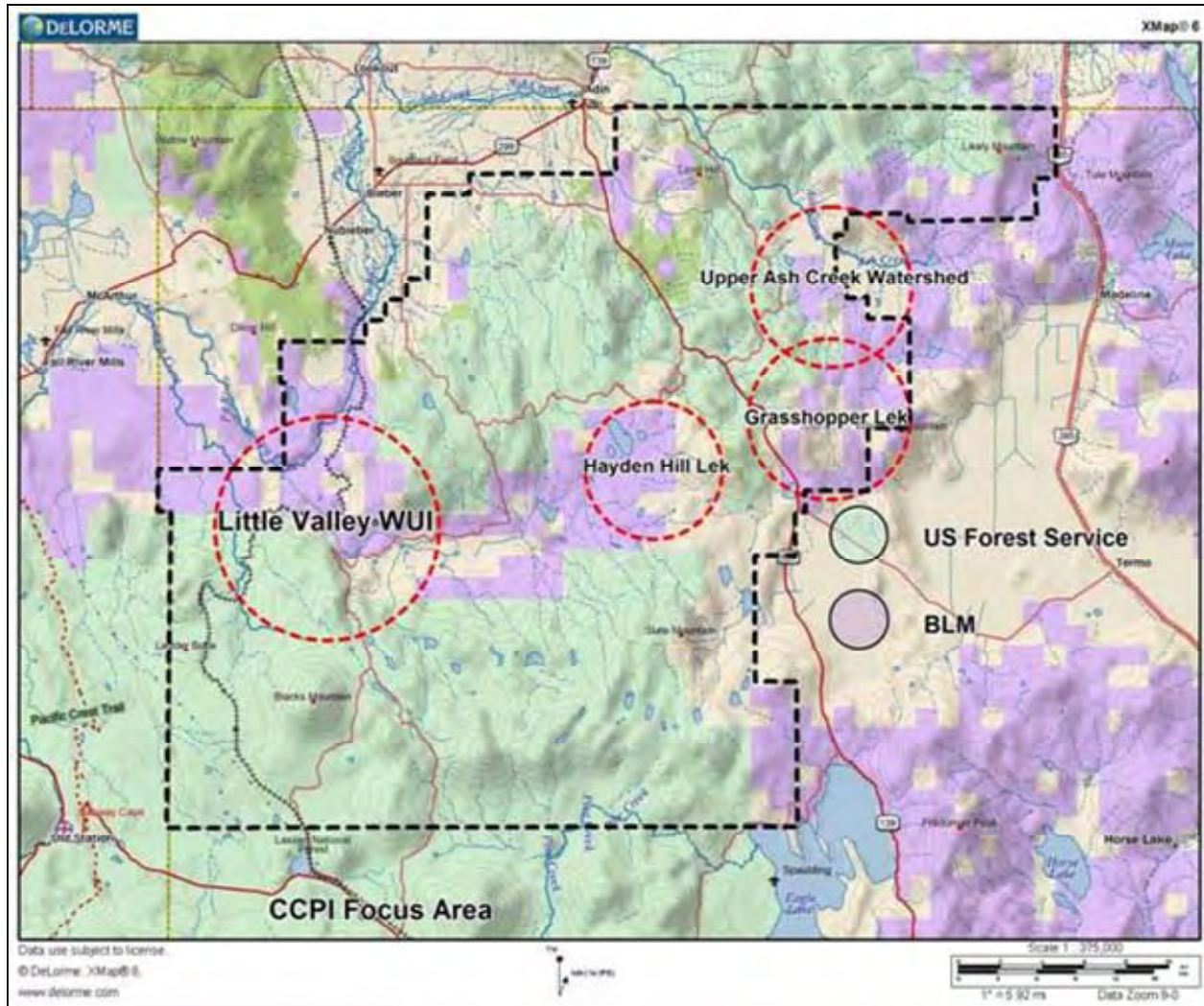
Agency or Agencies: PRCD, LCFSC, SIR, NRCS

Project Name: Cooperative Conservation Partnership Initiative

Project Coordinates: Various

Summary of Project: CSSRI and NRCS will be assisting private landowners, and potentially USFS and BLM, with planning and funding to implement landscape scale restoration treatments targeting the removal of invasive western juniper. NRCS is the lead for NRCS/CCPI funded projects and CSSRI will be the lead for CSSRI leveraged/funded projects. Below are the focus areas for 2011.

Project Map:



Lassen County CWPP 2011 Work Plan

WUI Area: Ash Valley

Funding: Planning/Not Funded

2011 Planning

Number of Acres: ----

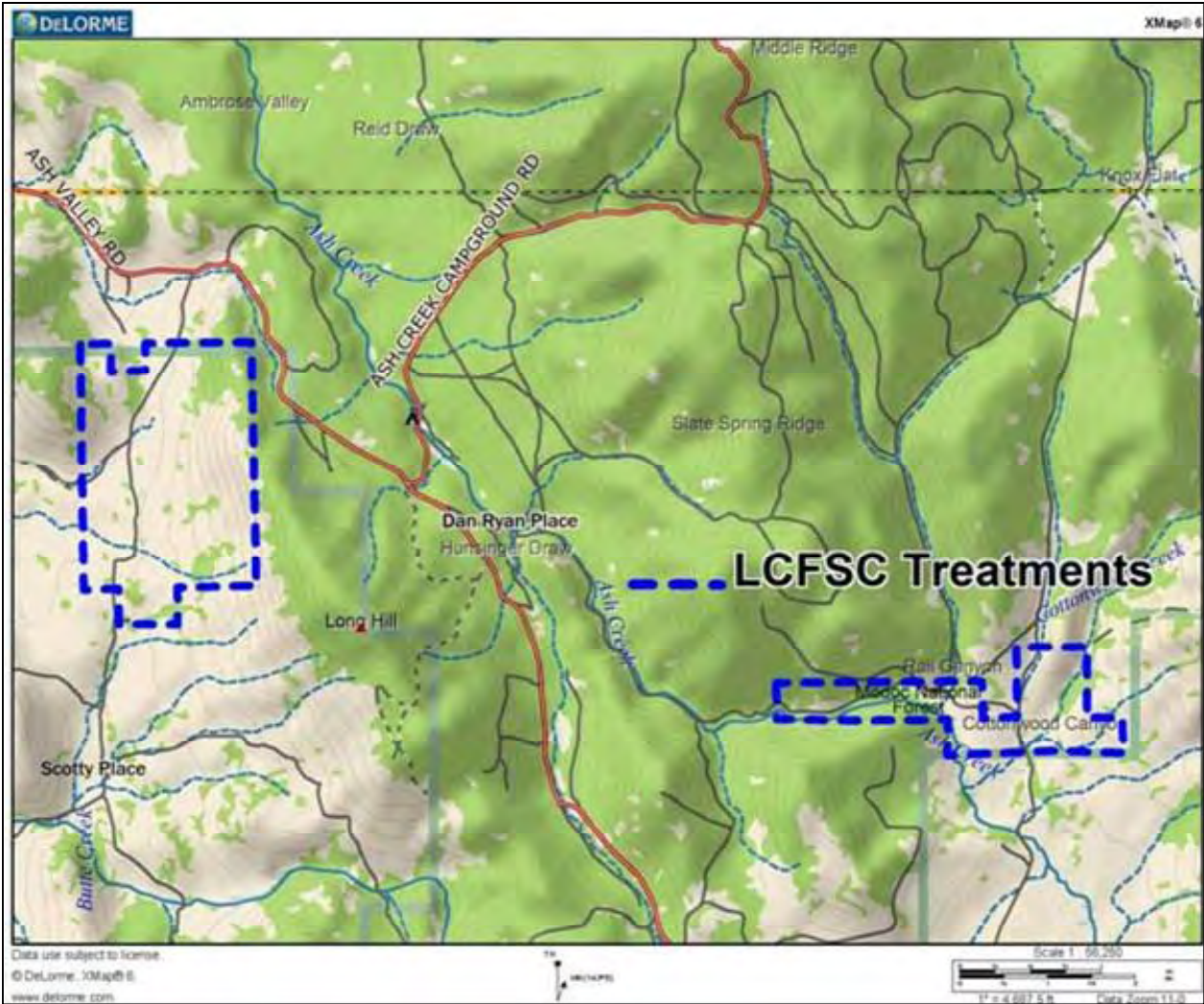
Agency or Agencies: CSSRI

Project Name: Ash

Project Coordinates: N41.1435 W120.8013

Summary of Project: LCFSC will continue planning with the Modoc National Forest (MDF) on a collaborative fuels treatment project west and north of the Ash Valley Community. MDF will be the lead for USFS land and LCFSC will be the lead for private land within the project area. It is anticipated the LCFSC will be asking for assistance from CAFSC, CalFire, NRCS and USFS with funding.

Project Map:



Lassen County CWPP 2011 Work Plan

WUI Area: Ash Valley & DFPZ

Funding: Partially Funded

2011 Implementation

Number of Acres: 4852

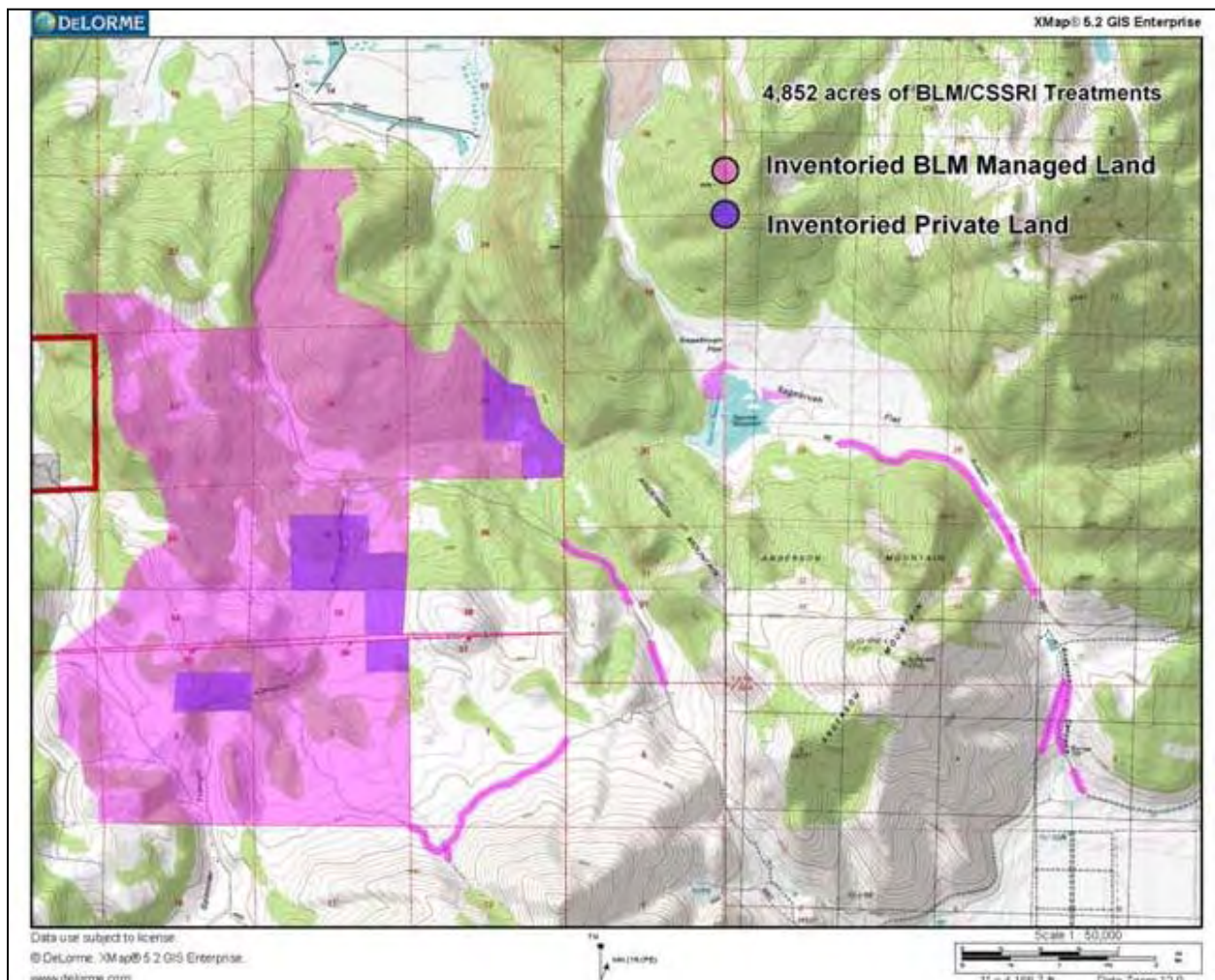
Agency or Agencies: CSSRI, BLM

Project Name: Ash Valley Watershed Restoration Project

Project Coordinates: N40.9999 W120.6830

Summary of Project: CSSRI, through its partners PRCD, LCFSC & SIR, is working with BLM and making applications with various agencies to fund treatments on Private and BLM managed lands. Portions of the project are underway and being funded by NRCS, USFWS, CSI, SNC and private landowner contributions. Project connects the BLM South Ash Valley, CSSRI Ash Valley I, II & IV and the CSSRI South Knob projects. Work consists of the removal of invasive juniper through biomass utilization in an effort to reduce hazardous fuel loads and restore the watershed and wildlife habitat.

Project Map:



Lassen County CWPP 2011 Work Plan

WUI Area: Hayden Hill DFPZ

Funding: Funded

2011 Implementation

Number of Acres: 480

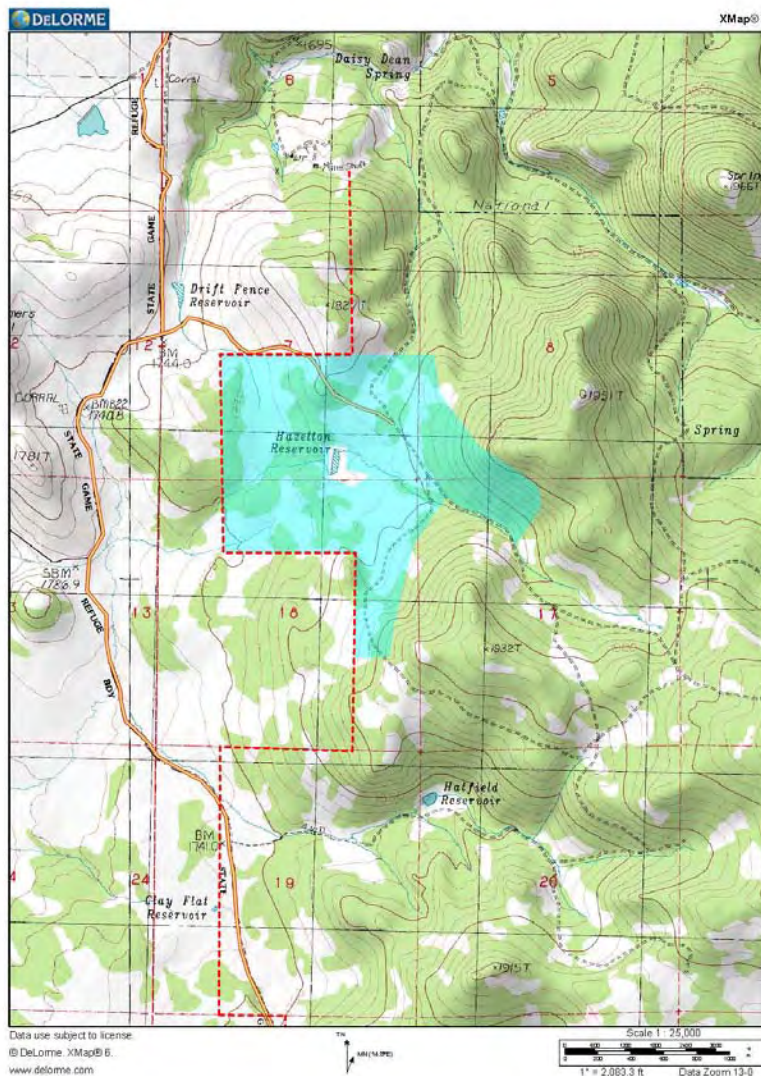
Agency or Agencies: CSSRI

Project Name: Mapes Habitat Restoration Project

Project Coordinates: N40.96367 W120.85427

Summary of Project: CSSRI, through its partners PRCD, LCFSC & SIR, is implementing treatments on Mapes Ranch private lands in the Hayden Hill area. A portion of the project is underway and being funded by NRCS and private landowner contributions. Project connects BLM projects. Work consists of the removal of invasive juniper through biomass utilization in an effort to reduce hazardous fuel loads and restore the watershed and wildlife habitat.

Project Map:



Lassen County CWPP 2011 Work Plan

WUI Area: McBride Springs DFPZ

Funding: Planning/Not Funded

2011 Planning

Number of Acres: 743

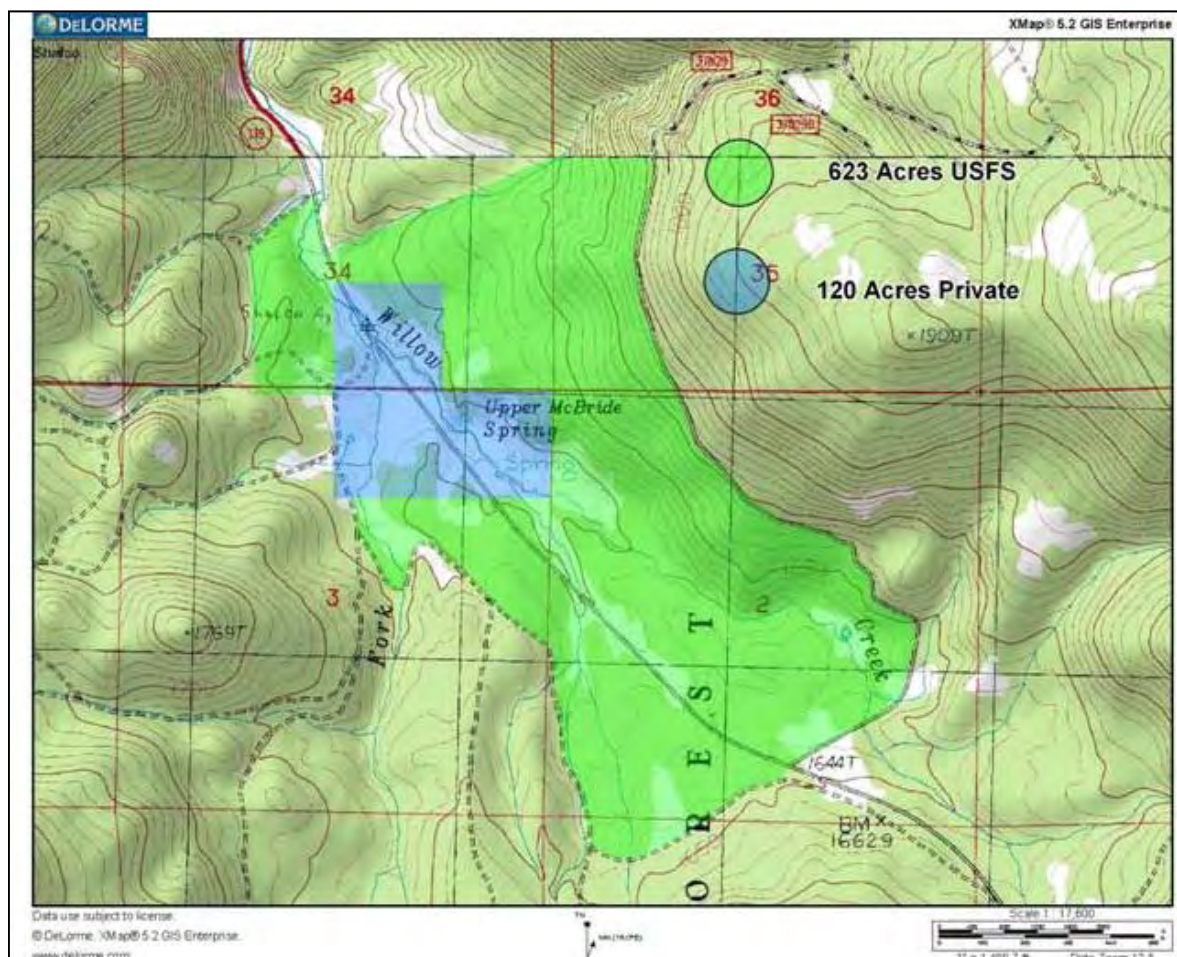
Agency or Agencies: CSSRI, MDF

Project Name: McBride Springs Watershed Restoration & Fuel Reduction Project

Project Coordinates: N40.998849 W120.98694

Summary of Project: CSSRI, through its partners PRCD, LCFSC & PRCD, and in cooperation with the USFS, will be making applications with various agencies to fund treatments on private and USFS lands. NEPA and CEQA clearance are underway. Planning work has been funded by SNC and CSSRI. Project would restore an important watershed along the Highway 139 corridor. Work would be the removal of invasive juniper through biomass utilization in an effort to reduce hazardous fuel loads and restore the watershed and wildlife habitat. Eastside pine thinning could also occur. Project would be implemented by the Cooperative Sagebrush Steppe Restoration Initiative partnership, with the Pit Resource Conservation District as the lead, and funding partners.

Project Map:



Lassen County CWPP 2011 Work Plan

WUI Area: Grasshopper Valley DFPZ

Funding: Partially Funded

2011 Planning

Number of Acres: 2714

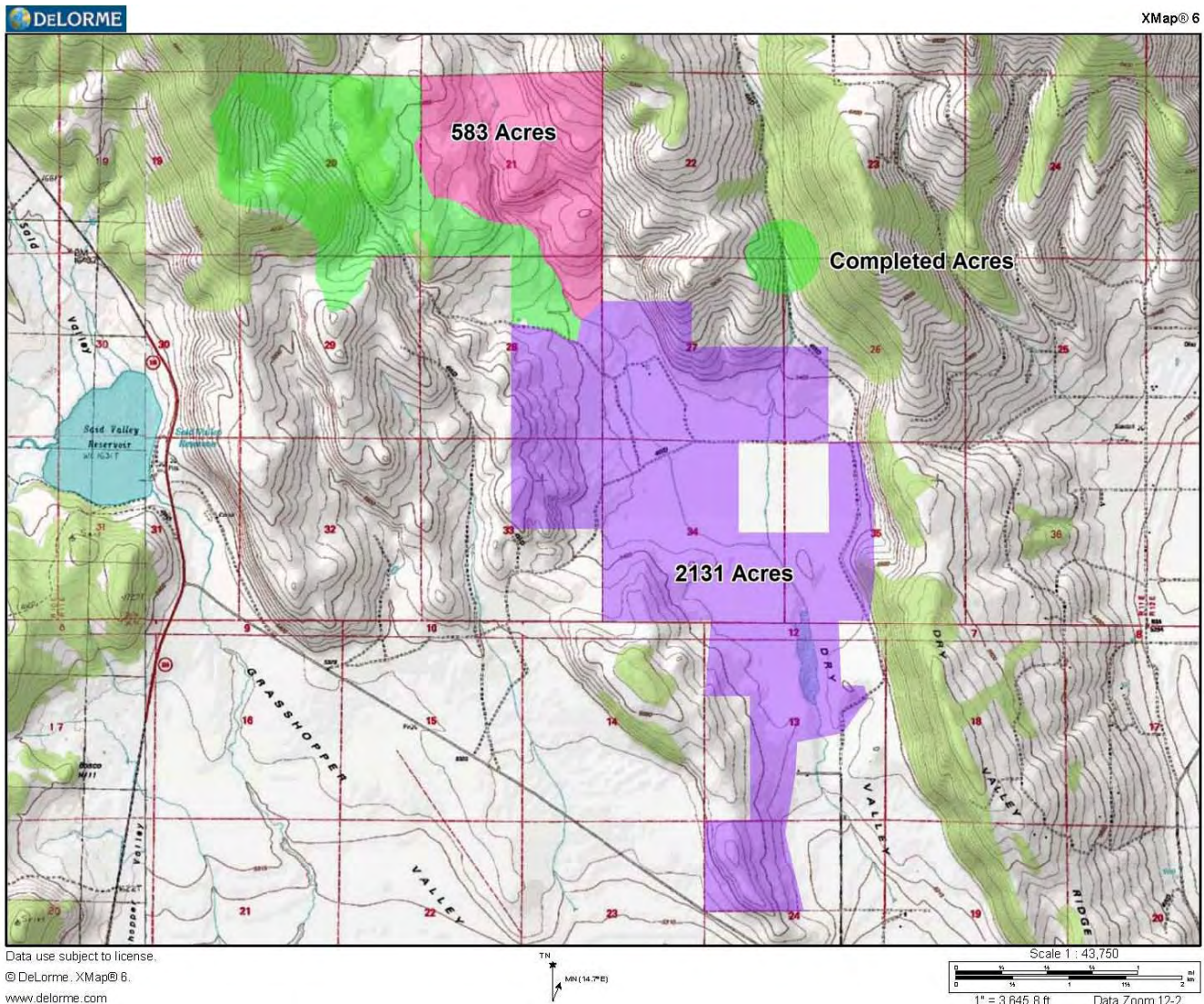
Agency or Agencies: CSSRI

Project Name: McClelland Habitat Restoration Project

Project Coordinates: N40.9199 W120.7020

Summary of Project: CSSRI, through its partners PRCD, LCFSC & SIR, is making applications with various agencies to fund treatments on McClelland Ranch private lands in North Grasshopper Valley. A portion of the project is underway and being funded by NRCS and private landowner contributions. Project connects the CSSRI South Knob projects. Work consists of the removal of invasive juniper through biomass utilization in an effort to reduce hazardous fuel loads and restore the watershed and wildlife habitat.

Project Map:



Lassen County CWPP 2011 Work Plan

WUI Area: Madeline & DFPZ

Funding: Planning/Not Funded

2011 Planning

Number of Acres: 2,554

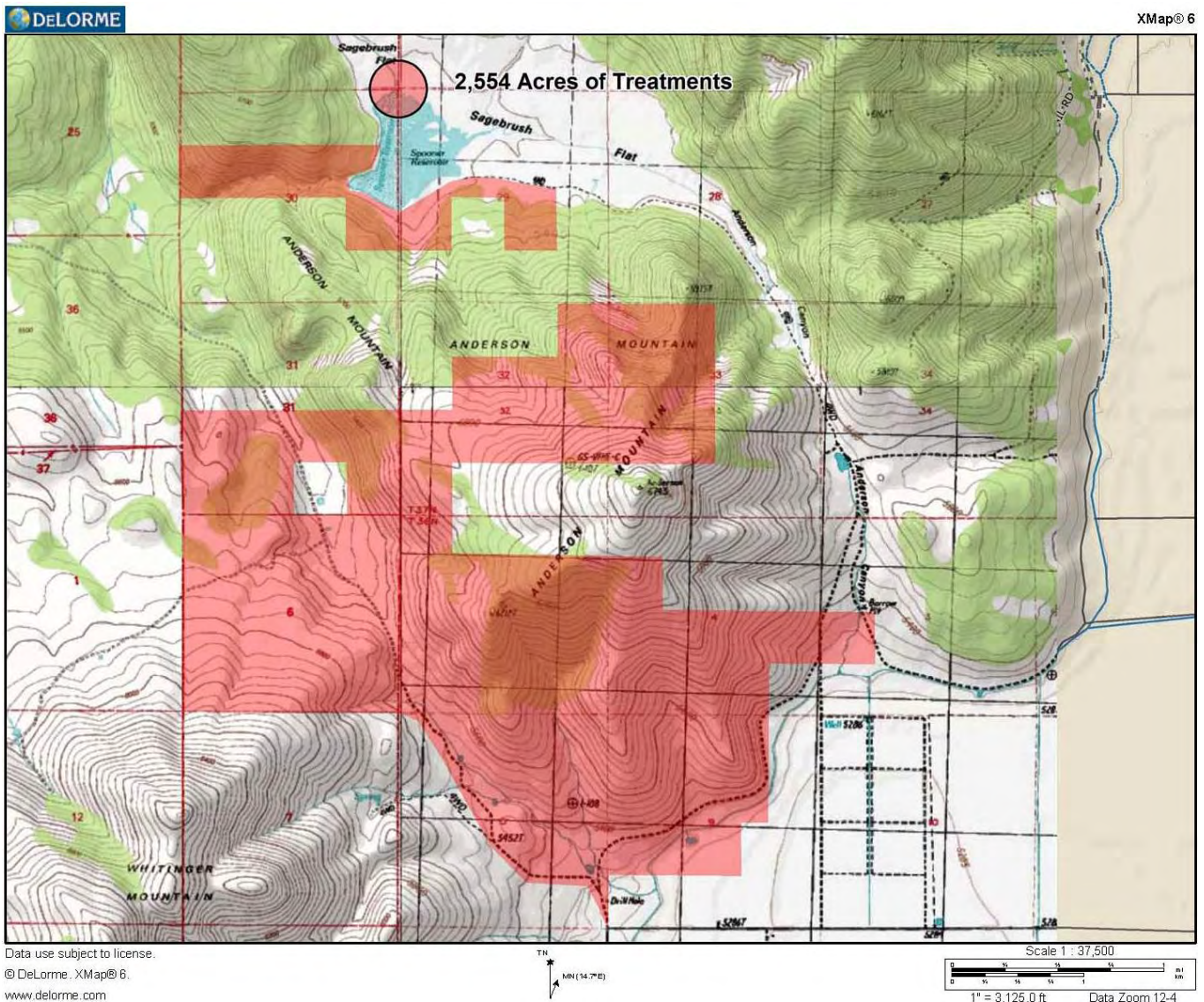
Agency or Agencies: CSSRI

Project Name: South Ash Valley IV Watershed Restoration Project

Project Coordinates: N40.9827 W120.6151

Summary of Project: SSRI, through its partners PRCD, LCFSC & SIR, is making applications with various agencies to fund treatments on Ash Valley Ranch private lands on the western edge of the Madeline Plain. Project connects the CSSRI Ash Valley projects. Work consists of the removal of invasive juniper through biomass utilization in an effort to reduce hazardous fuel loads and restore the watershed and wildlife habitat.

Project Map:



Lassen County CWPP 2011 Work Plan

WUI Area: Janesville & Milford

Funding: Partially Funded

2011 Implementation

Number of Acres: 160

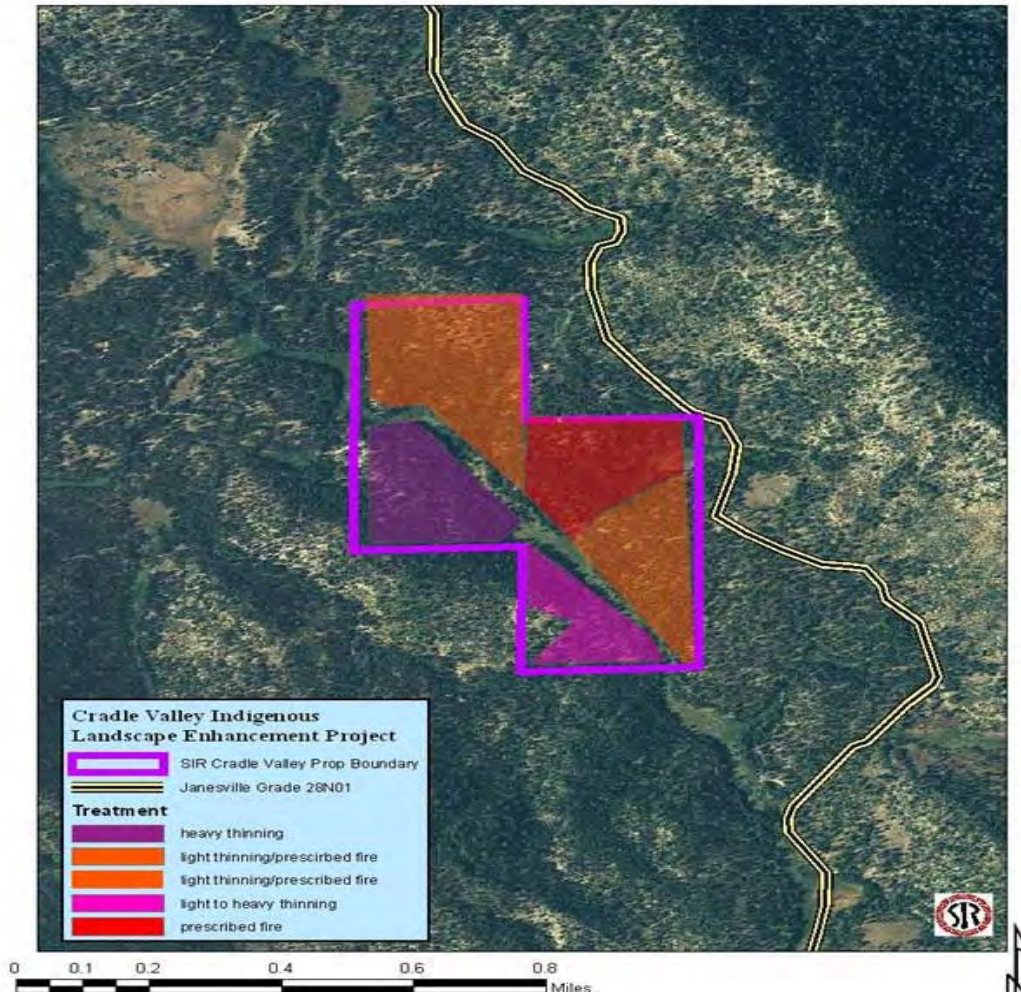
Agency or Agencies: SIR

Project Name: Cradle Valley Indigenous Landscape Enhancement Project

Project Coordinates: N40.2261 W120.5021

Summary of Project: This 160 acre SIR property is located in Plumas County, but is right on the Lassen/Plumas County border. It is within the WUI for the Janesville and Milford communities. The property is completely surrounded by the Plumas National Forest (PNF). PNF lands on all sides are in need of thinning to improve forest health and reduce unnaturally high fuel loads. The Janesville Grade road which provides access to Antelope Lake from Hwy 395 is immediately adjacent to the property on the east side, providing a potential ignition source. The SIR has hand treated 80-acres of the property on the north and northeast sides of the property. The SIR plans to treat the remaining 80-acres on the west side. These portions of the property are the hardest to access, have heavy fuel accumulation, and are the most important to protect as a fire coming off the Plumas National Forest would most likely come from the southwest due to the prevailing winds.

Project Map:



Lassen County CWPP 2011 Work Plan

WUI Area: Susanville

Funding: Partially Funded

2011 Implementation

Number of Acres: 0

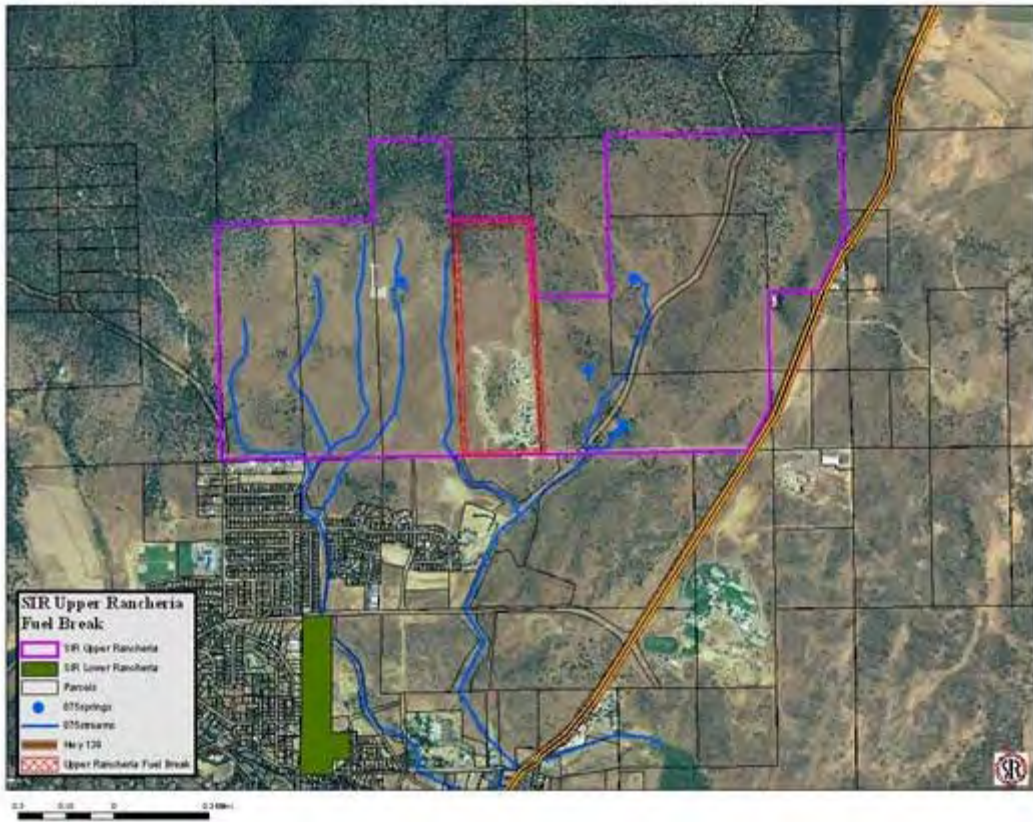
Agency or Agencies: SIR

Project Name: Upper Rancheria Fuel Break

Project Coordinates: N40.446 W120.6435

Summary of Project: SIR plans to construct a 2-mile long and one-chain (66') wide fuel break around the Upper Rancheria housing to protect 52 tribal homes. Invasive annuals, including cheat grass (*Bromus tectorum*) and medusahead (*Taeniatherum caput-medusae*) will be weed-wacked within the fuel break to less than ¼" stubble height. Sagebrush and bitterbrush will be removed utilizing chainsaws and hand tools. Brush components will be made into hand piles 4-5' in diameter. A 2' hand line will be constructed the length of the fuel break. SIR will work with the BIA/BLM Interagency Fuels Crew out of the BLM Cedarville office to burn piles in the winter when there is adequate moisture and snow cover on the ground.

Project Map:





Bureau of Land Management Alturas Field Office Fuels Management Strategy.

Reducing the risk of catastrophic wildfire is a priority for the Alturas Field Office. We are working collaboratively with private and other public agencies to implement fuels projects that will help minimize the threat of wildfire. Life and property protection are of the utmost importance to the Alturas Field Office. Conducting fuels management projects in the WUI and beyond is allowing us to further this effort. A secondary ecological benefit achieved by these projects is the restoration of the sage steppe ecosystem by removing expansive western juniper populations. Working together with our partners, we are reducing the risk of wildfire while at the same time improving the ecological condition of our public lands.

+++++

Lassen County CWPP 2011 Work Plan

WUI Area: Ash Valley

Funding: Planning/Not Funded

2011 Planning

Number of Acres: 5000

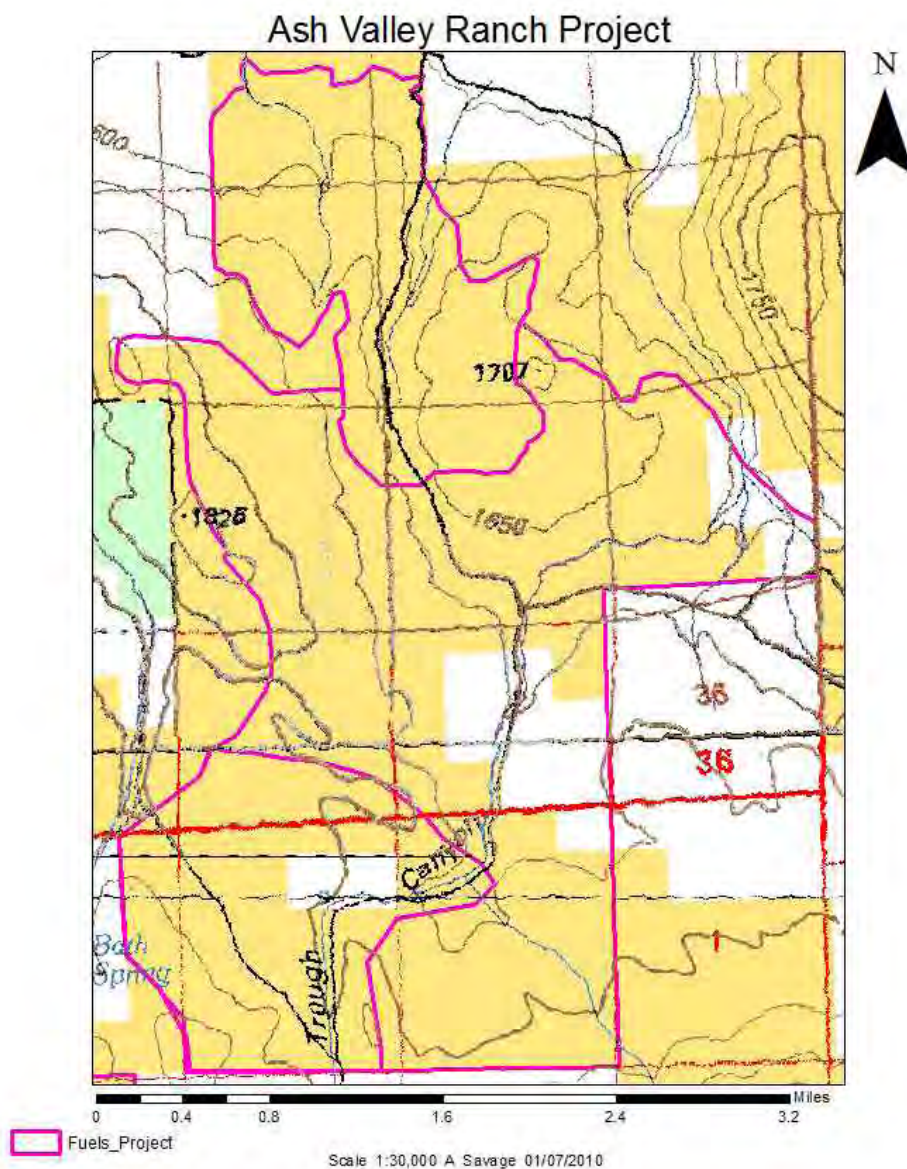
Agency or Agencies: Alturas BLM

Project Name: Ash Valley Ranch Juniper Reduction

Project Coordinates: N 40.9999 W 120.6851

Summary of Project: Juniper density in the area is leading to a loss of understory and ecosystem diversity. The Lassen Fire Safe Council has approached BLM to treat the area to coincide with private, Forest Service, and previous BLM treatments in the vicinity. BLM is currently working on the NEPA for the project

Project Map:



Lassen County CWPP 2011 Work Plan

WUI Area: Madeline

Funding: Funded

2011 Implementation

Number of Acres: 2100

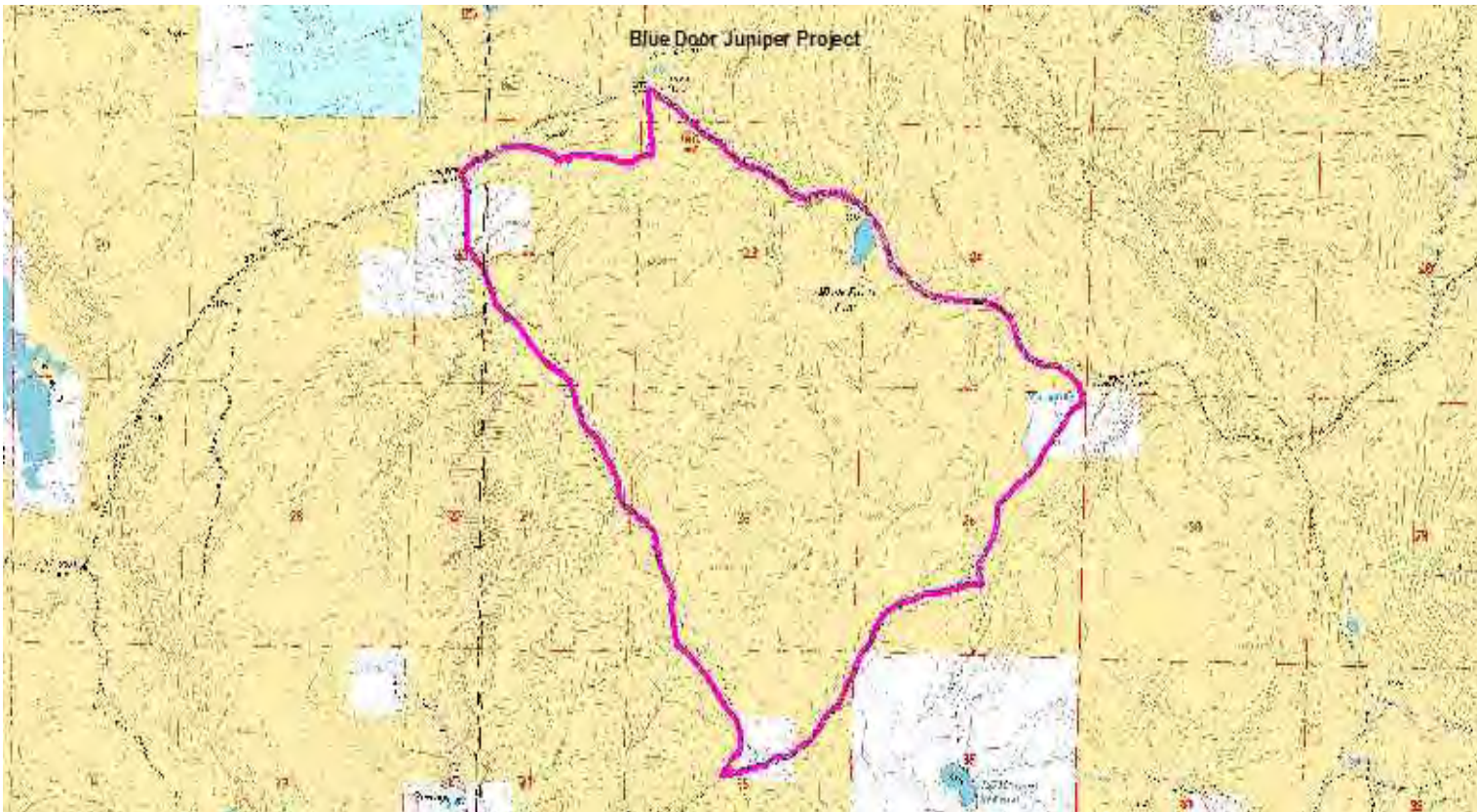
Agency or Agencies: Alturas BLM

Project Name: Blue Door Juniper Reduction

Project Coordinates: N 41.0604 W 120.3457

Summary of Project: Western Juniper has encroached over a vast area in Northeast California. This encroachment has contributed to degraded watersheds, degraded wildlife habitat, reduction of livestock forage, and reduction of bio-diversity and increased the hazard of catastrophic wildfire. By reducing areas of Western Juniper stands by mechanical and hand treatments, the current ecological trend can be slowed or stopped, allowing recovery of degraded natural resources. The project area is 2100 acres.

Project Map:



Lassen County CWPP 2011 Work Plan

WUI Area: Madeline

Funding: Funded

2011 Implementation

Number of Acres: 922

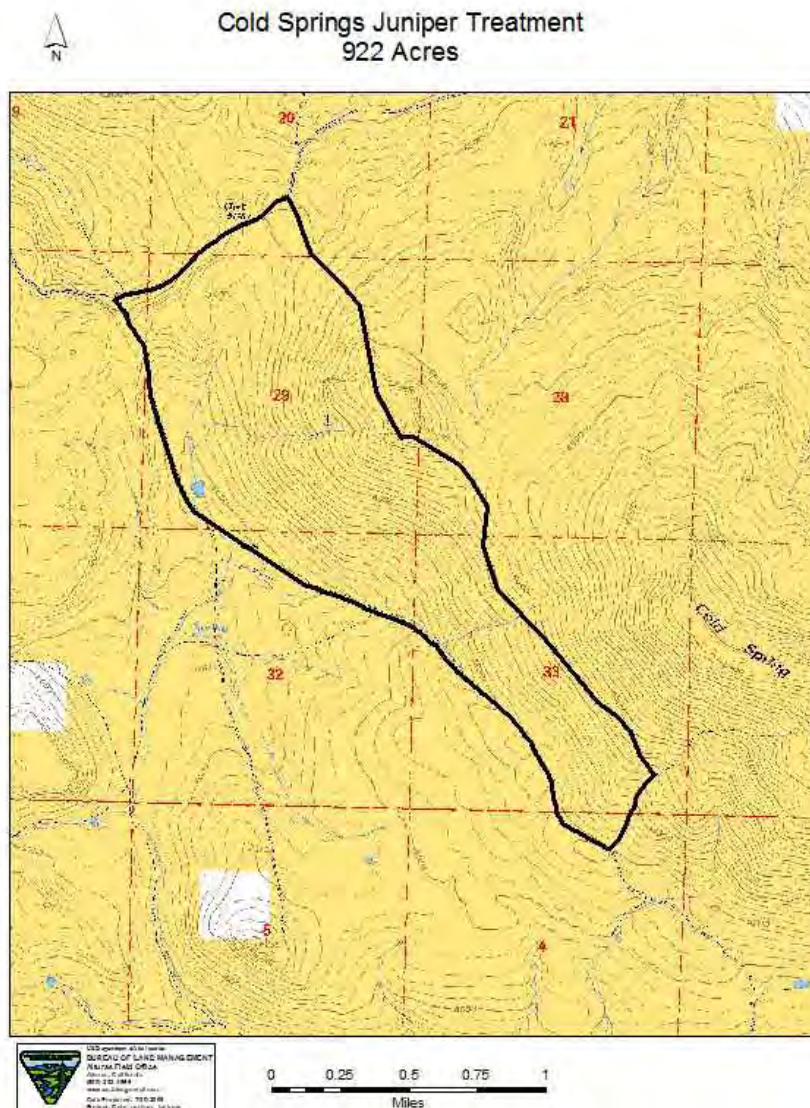
Agency or Agencies: Alturas BLM

Project Name: Cold Springs Hand Treatment Juniper Reduction

Project Coordinates: N 41.0360 W 120.3005

Summary of Project: Western Juniper has encroached over a vast area in Northeast California. This encroachment has contributed to degraded watersheds, degraded wildlife habitat, reduction of livestock forage, and reduction of bio-diversity and increased the hazard of catastrophic wildfire. By reducing areas of Western Juniper stands by mechanical and hand treatments, the current ecological trend can be slowed or stopped, allowing recovery of degraded natural resources. The project area is 922 acres. Project funded by a Sierra Nevada Conservancy grant.

Project Map:



Lassen County CWPP 2011 Work Plan

WUI Area: Lassen Day Bench

Funding: Planning/Not Funded

2011 Planning

Number of Acres: 85

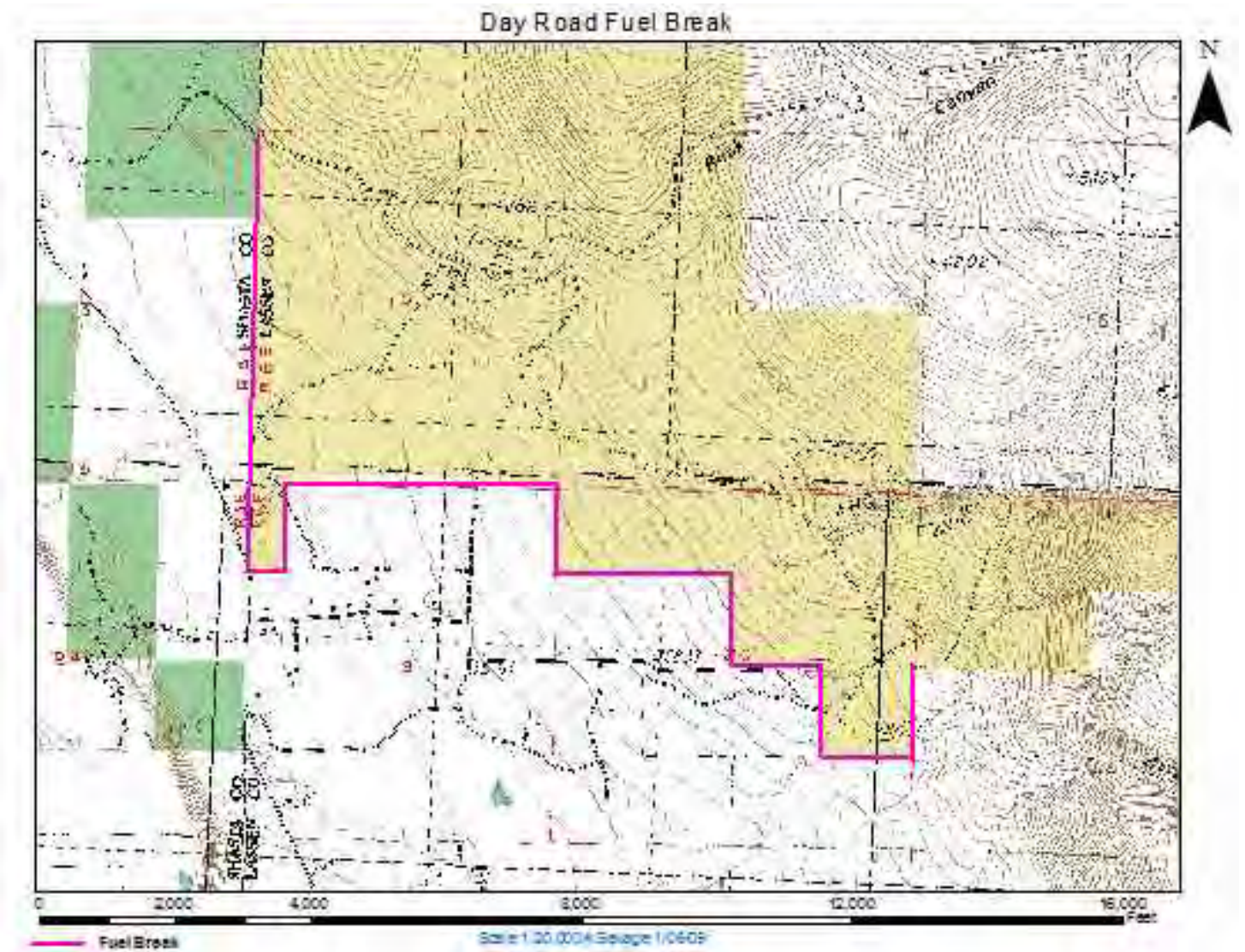
Agency or Agencies: Alturas BLM

Project Name: Day Road Shaded Fuel Break 7 Pile Burn

Project Coordinates: N 41.3153 W 121.1245

Summary of Project: The Day Road shaded Fuel Break was created in 2001-2002 to provide a fuel break between BLM and private land in NW Lassen County. It was constructed with BLM handcrews and the slash was piled and burned. It is now in the maintenance phase and this is the second maintenance entry on the project. The maintenance is done by Intermountain Conservation Camp Inmate crews.

Project Map:



Lassen County CWPP 2011 Work Plan

WUI Area: Bieber

Funding: Planning/Not Funded

2011 Planning

Number of Acres: 150

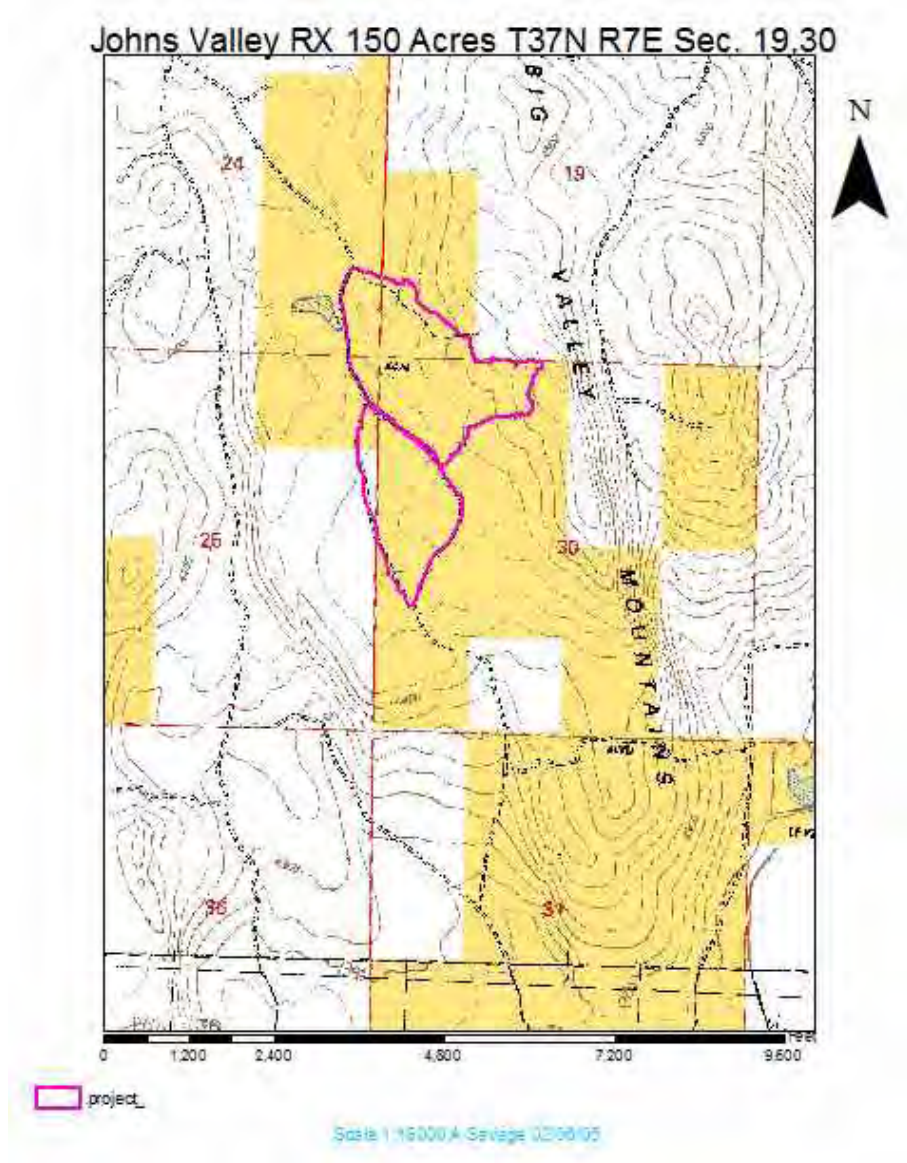
Agency or Agencies: Alturas BLM

Project Name: Johns Valley RX

Project Coordinates: N 41.0213 W 121.2172

Summary of Project: The proposed action of a 150 acre underburn is needed to reduce fire hazards by: (a) reducing dead fuels and decadent brush within timber stands, (b) cycling nutrients, reducing stock rates and improving forest health, (c) stimulating new growth of brush, oak, grasses, and forbs, (d) reducing the potential of highly damaging crown fires, (e) making existing roadways defensible to fight fires from and improving safe access for fire fighting equipment.

Project Map:



Lassen County CWPP 2011 Work Plan

WUI Area: Ash Valley

Funding: Funded

2011 Implementation

Number of Acres: 405

Agency or Agencies: Alturas BLM

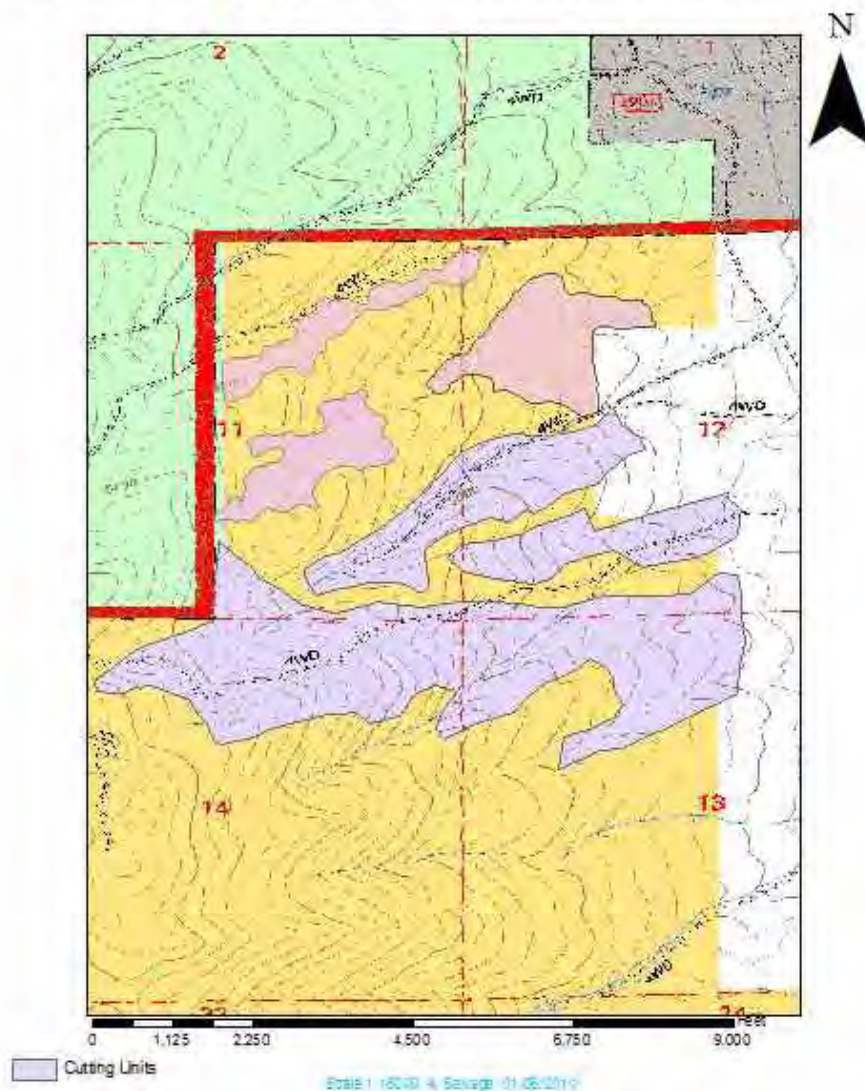
Project Name: Knox Mtn. Timber Sale

Project Coordinates: N 41.1422 W 120.6688

Summary of Project: The proposed action is designed to reduce the existing fire hazard. The project area is 405 acres and cruised at 950,000 board feet. The pine component will be enhanced by pre-commercially thinning areas with advanced conifer regeneration, and commercially thinning intermediate, co-dominant and dominate trees that are showing signs of stress or overcrowding. Within the proposed treatment area white fir will be removed when in the vicinity of pine to allow for pine regeneration.

Project Map:

Knox MTN. Timber Sale 405 Acres, T38N R11E Sec. 11,12,13,14



Lassen County CWPP 2011 Work Plan

WUI Area: Madeline

Funding: Planning/Not Funded

2011 Planning

Number of Acres: 1000

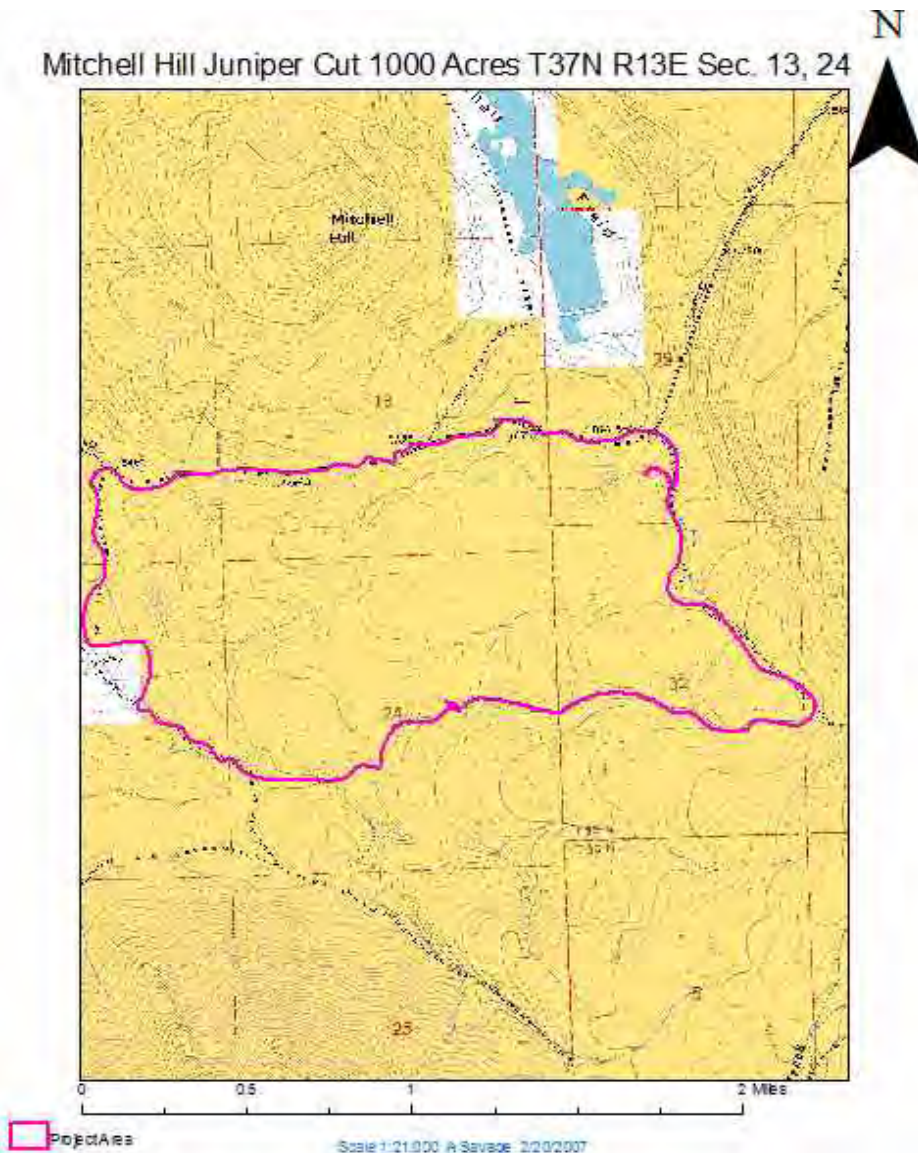
Agency or Agencies: Alturas BLM

Project Name: Mitchell Hill Juniper Reduction

Project Coordinates: N 41.0342 W 120.4243

Summary of Project: Western Juniper has encroached over a vast area in Northeast California. This encroachment has contributed to loss of native vegetation in the understory, which is creating soil from overland movement of water. The native aspen and mahogany species in the area are being crowded out by the juniper. Juniper density is high, in which there is now a risk of catastrophic wildfire. Juniper reduction work would be done by hand and chainsaws. The material would be utilized for firewood. The project area is 1000 acres with @500 acres completed.

Project Map:



Lassen County CWPP 2011 Work Plan

WUI Area: Ash Valley

Funding: Funded

2011 Implementation

Number of Acres: 750

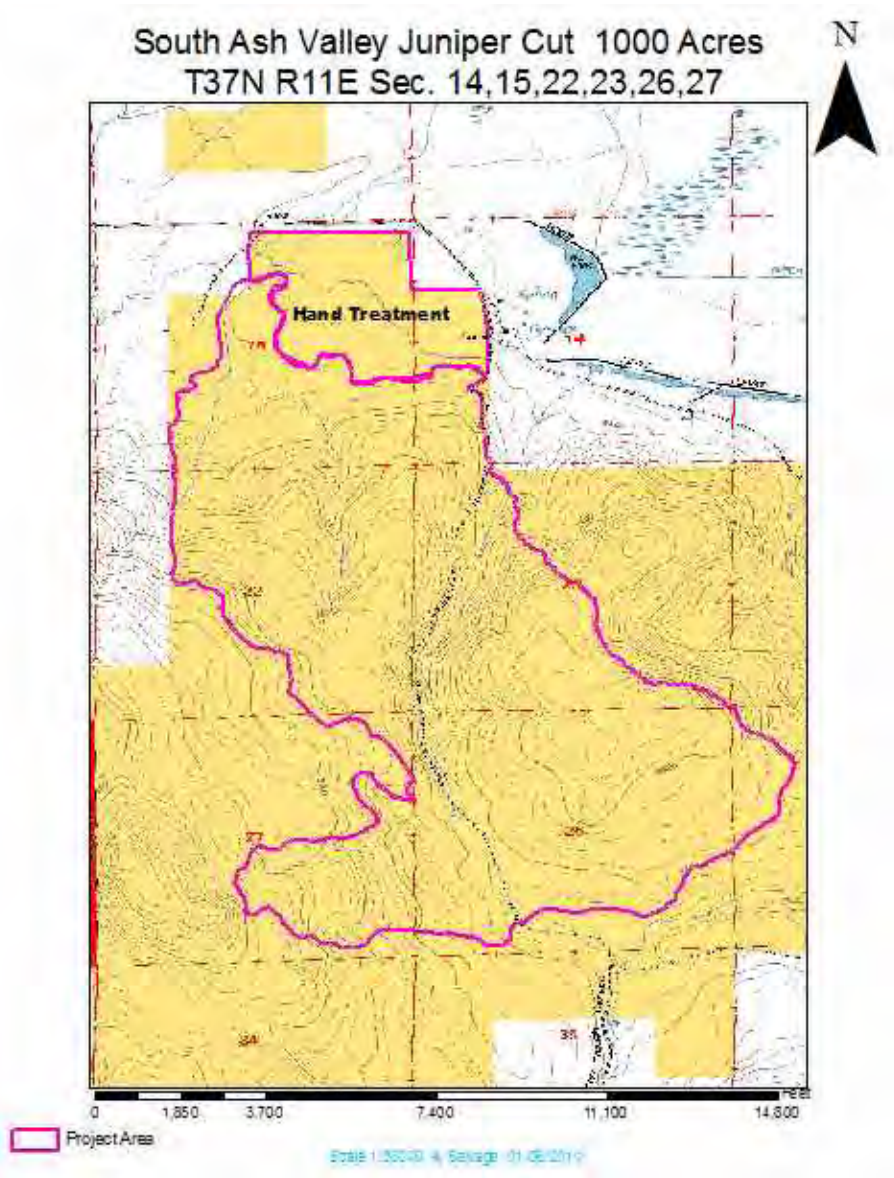
Agency or Agencies: Alturas BLM

Project Name: South Ash Valley Juniper Reduction

Project Coordinates: N 41.0304 W 120.6831

Summary of Project: Juniper density in the area is leading to a loss of understory and ecosystem diversity. The Lassen Fire Safe Council has approached BLM to treat the area to coincide with private and Forest Service treatments in the vicinity. BLM has let the contract on the 750 acre mechanical shearing and biomass. 400 acres have been completed to date. A 200 acre hand treatment of juniper was completed in 2008.

Project Map:



Lassen County CWPP 2011 Work Plan

WUI Area: Madeline

Funding: Funded

2011 Implementation

Number of Acres: 2600

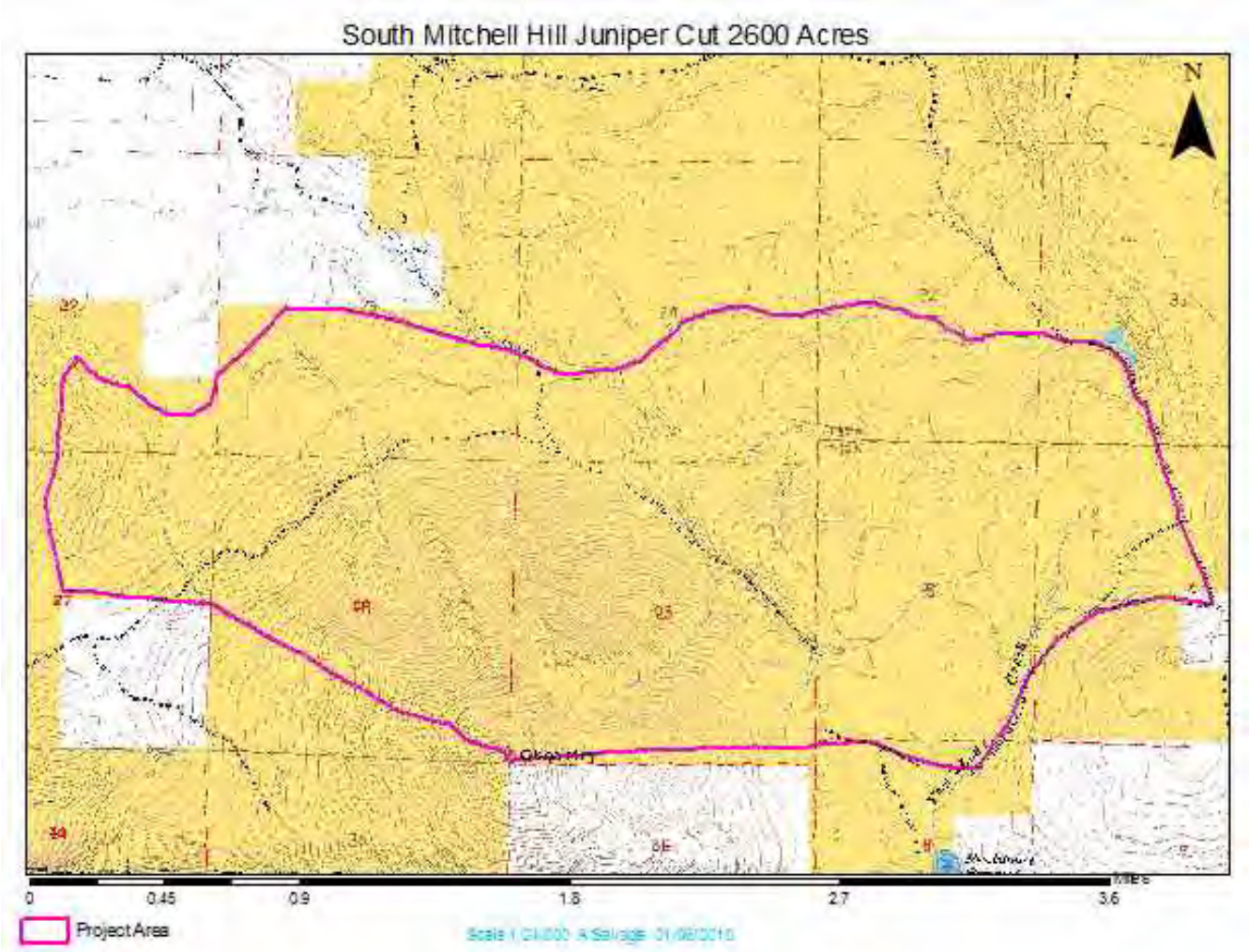
Agency or Agencies: Alturas BLM

Project Name: South Mitchell Hill Juniper Reduction

Project Coordinates: N 41.0171 W 120.4260

Summary of Project: Western Juniper has encroached over a vast area in Northeast California. This encroachment has contributed to degraded watersheds, degraded wildlife habitat, reduction of livestock forage, and reduction of bio-diversity and increased the hazard of catastrophic wildfire. By reducing areas of Western Juniper stands by mechanical and hand treatments, the current ecological trend can be slowed or stopped, allowing recovery of degraded natural resources. The project area is 2600 acres.

Project Map:



Lassen County CWPP 2011 Work Plan

WUI Area: Likely

Funding: Planning/Not Funded

2011 Planning

Number of Acres: 2000

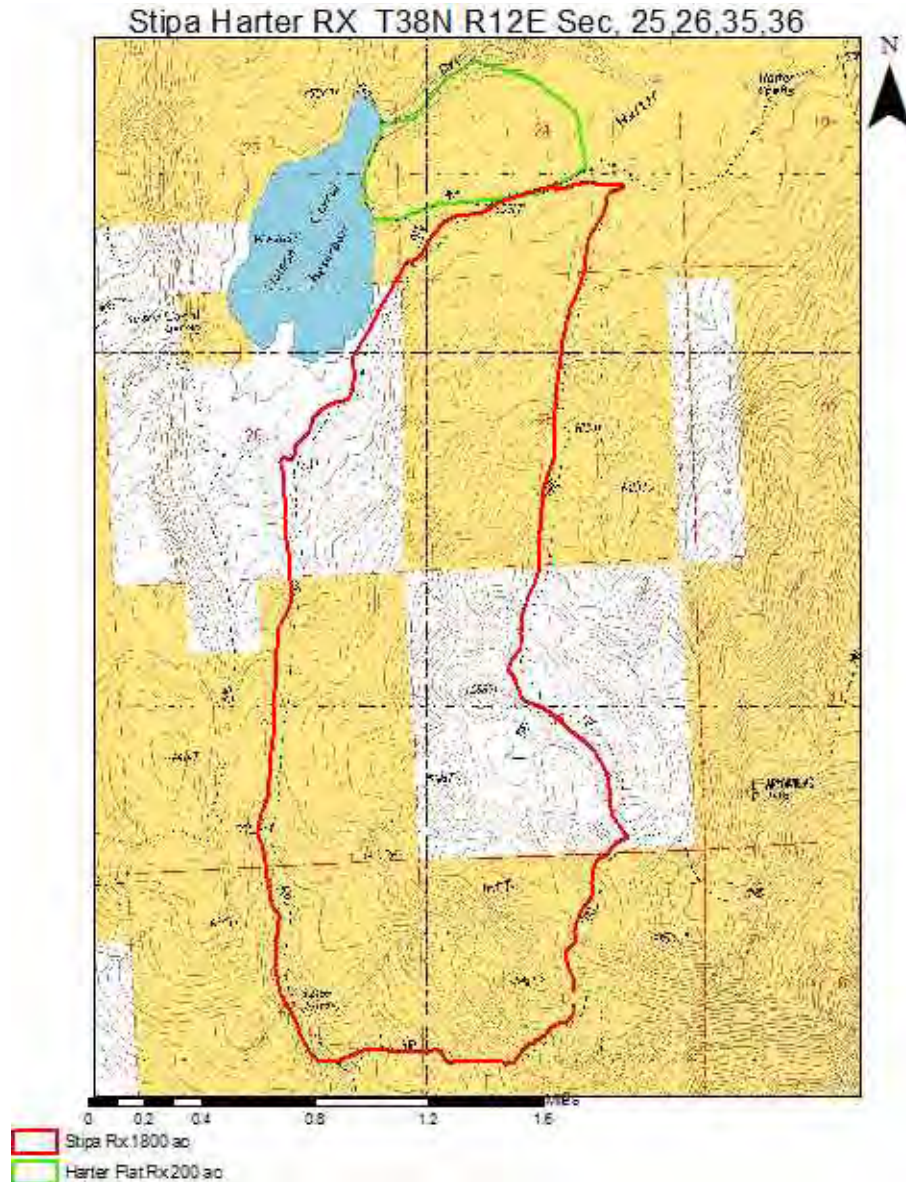
Agency or Agencies: Alturas BLM

Project Name: Stipa Harter RX

Project Coordinates: N 41.0991 W 120.5447

Summary of Project: Western Juniper has encroached over a vast area in Northeast California. This encroachment has contributed to degraded watersheds, degraded wildlife habitat, reduction of livestock forage, and reduction of bio-diversity and increased the hazard of catastrophic wildfire. By reducing areas of Western Juniper stands by reintroducing fire into the ecosystem, the current ecological trend can be slowed or stopped, allowing recovery of degraded natural resources. The project area is 2000 acres.

Project Map:



Lassen County CWPP 2011 Work Plan

WUI Area: Lassen/Day Bench

Funding: Funded

2011 Implementation

Number of Acres: 124

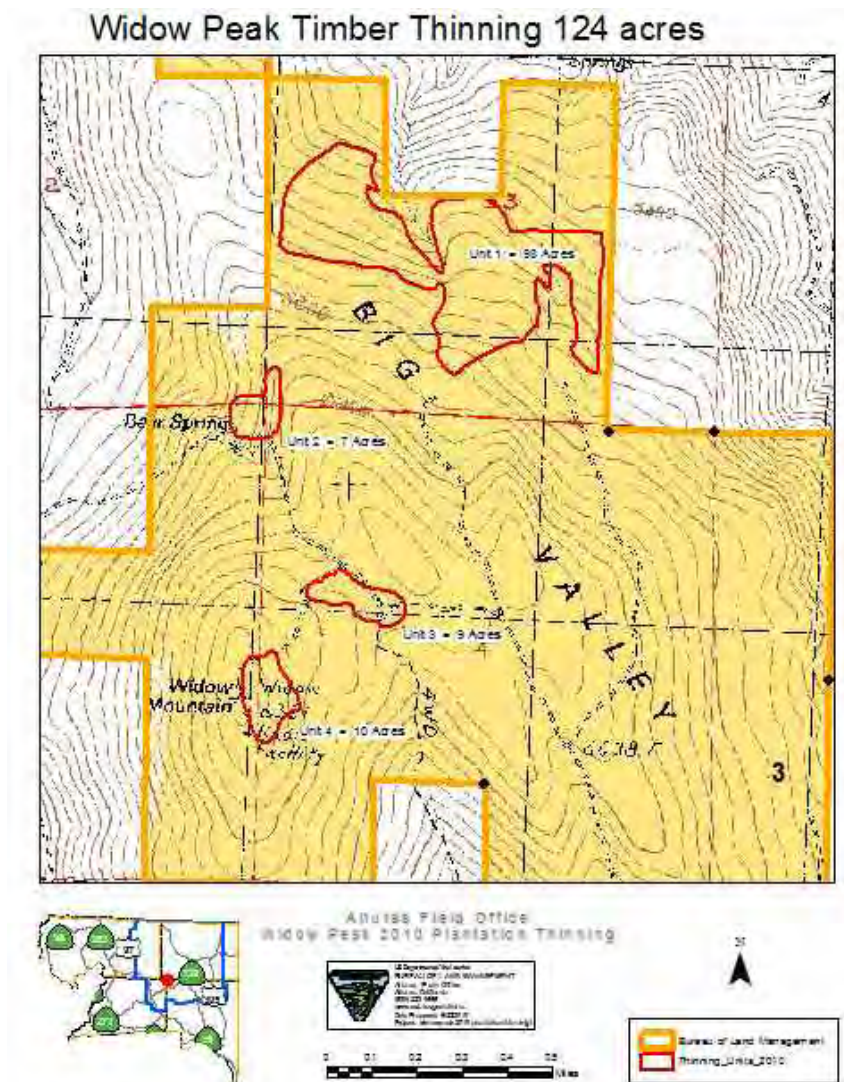
Agency or Agencies: Alturas BLM

Project Name: Widow Pk. Thinning

Project Coordinates: N 41.1735 W 121.2890

Summary of Project: The proposed action is designed to reduce the existing fire hazard, thin advanced conifer regeneration and plantations, and commercial thin areas of intermediate, co-dominant and dominate trees on @ 124 acres. Pre commercial size white fir within 30 to 100 ft of a healthy pine will be removed to promote pine regeneration and reduce the ladder fuels around the more fire resistant pine. Within the mixed conifer stands most of the white fir with poor form, dead tops, poor vigor or old scars will be targeted for removal. In general, within the pure stands of healthy white fir, trees over ten inch DBH will be removed to leave a spacing of 12-16 feet, leaving the larger specimens. Contract has been let.

Project Map:



Lassen County CWPP 2011 Work Plan

WUI Area: Madeline

Funding: Funded

2011 Implementation

Number of Acres: 100

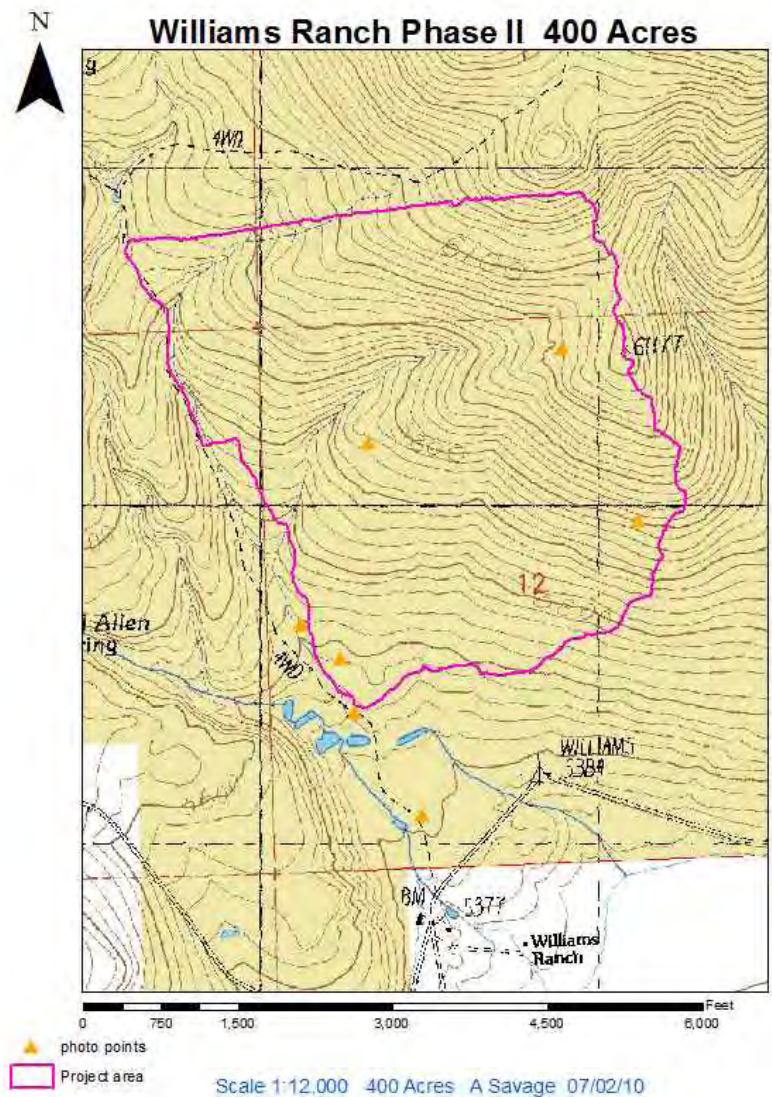
Agency or Agencies: Alturas BLM

Project Name: Williams Ranch Juniper Reduction

Project Coordinates: N 41.0590 W 120.5540

Summary of Project: Western Juniper has encroached over a vast area in Northeast California. This encroachment has contributed to loss of native vegetation in the understory, which is creating soil from overland movement of water. The native aspen and mahogany species in the area are being crowded out by the juniper. Juniper density is high, in which there is now a risk of catastrophic wildfire. Juniper reduction work would be done by hand and chainsaws. The material would be utilized for firewood. The project area is 600 acres with 200 acres as the first treatment

Project Map:



Lassen County Community Wildfire Protection Plan
BLM Eagle Lake Field Office
2011 Annual Work Plan Summary Narrative

The Eagle Lake Field Office currently has Hazardous Fuels Reduction, Ecosystem Restoration, projects planned or ongoing in Lassen County. The purpose and benefits of these projects are community and resource protection, wildlife habitat improvement, rangeland improvement and ecosystem restoration.

The **Stones-Bengard** Hazardous Fuels Reduction Project's main objective is to reduce the risk of catastrophic wildfire to the communities of Stones-Bengard and Bucks Bay along the shores of Eagle Lake where Juniper encroachment has substantially increased the hazardous fuel loading in the area. This project is also expected to have the added benefit of considerable improvement to rangeland in the area.

The **North Eagle** and **South Cleghorn** Hazardous Fuels Reduction Projects are an extension of the Stones-Bengard project with the same objective to reduce the risk of catastrophic wildfire that could threaten valuable timber resources, and Bald Eagle habitat as well as the community of Stones-Bengard. The planned treatments of these projects have also been identified in the Cleghorn Habitat Management Plan (a plan for the protection and management of a Bald Eagle nesting territory on public land.) Benefits will include community and resource protection, rangeland and bald eagle habitat improvement.

The **North Horse** and **South Grasshopper** Hazardous Fuels Reduction Projects are in areas that have been identified as Fire Regime III in a condition class of 2 and 3. Our goal is to reduce high densities of western juniper and reintroduce fire into the ecosystem. This will reduce the risk of catastrophic wildfire and restore the project areas to a more healthy and productive plant community and in the future return the Fire Regime to a condition class of 1.

The **Dodge Reservoir** Hazardous Fuels Reduction and Habitat Improvement Project's goal is to reduce high densities of western juniper in order to improve sage grouse habitat, watershed health, reduce the threat of catastrophic wildfires and to restore the project area to a more healthy and productive plant community.

Fredonyer Peak Stewardship. The BLM proposes to reduce the density of white fir and western juniper on up to 3500 acres on Fredonyer Peak (see Map). This project may be accomplished using the using the Stewardship Contracting authority. The primary objectives are to reduce the risk of high severity wildfire to the forest resources and watershed attributes, increase water yield to the Eagle Lake and Horse Lake basins, improve wildlife habitat by increasing the biodiversity of understory vegetation and primary production, and enhancing forest stand resilience to insects and disease.

Diamond Mtn. Sanitation Project. The proposed action, designed to reduce the spread of mountain pine beetle and various species of dwarf mistletoe infecting ponderosa and Jeffrey pine, will incorporate a sanitation harvest and free thinning method. The use of these two silvicultural treatments will not only reduce the spread of these pathogens but also reduce density dependent mortality of trees within this stand. The total area of the treatment is 75 acres. The harvest of infected trees will be both mechanized and hand felled. Harvest will target infected trees unless they are deemed to have wildlife value as snags. In the case of mistletoe, harvest of trees from around each wildlife tree will be done in order to reduce its spread. Additionally, the free thinning will be used to reduce tree density favoring the resilience of remaining late seral trees to insect, disease, and wildfire. Wood products will be utilized for sawlogs, biomass, and fuelwood.

Bald Hills Stewardship. The BLM proposes to reduce the density of Jeffrey pine and western juniper on northwest of Eagle Lake. The primary objectives are to reduce the risk of high severity wildfire in the naturally regenerated stand and to increase spacing between trees in the plantations. The density along the Cleghorn Road will also be reduced which will enhance its use as a fire break. The secondary benefits include improving wildlife habitat by increasing the biodiversity of understory vegetation and enhancing forest stand resilience to insects and disease. The project is proposed for late 2011 or 2012. The primary treatment method will be mechanized thinning with biomass and sawtimber removal.

Lassen County CWPP 2011 Work Plan

WUI Area: Eagle Lake/Stones Landing

Funding: Partially Funded

2011 Planning

Number of Acres: 828

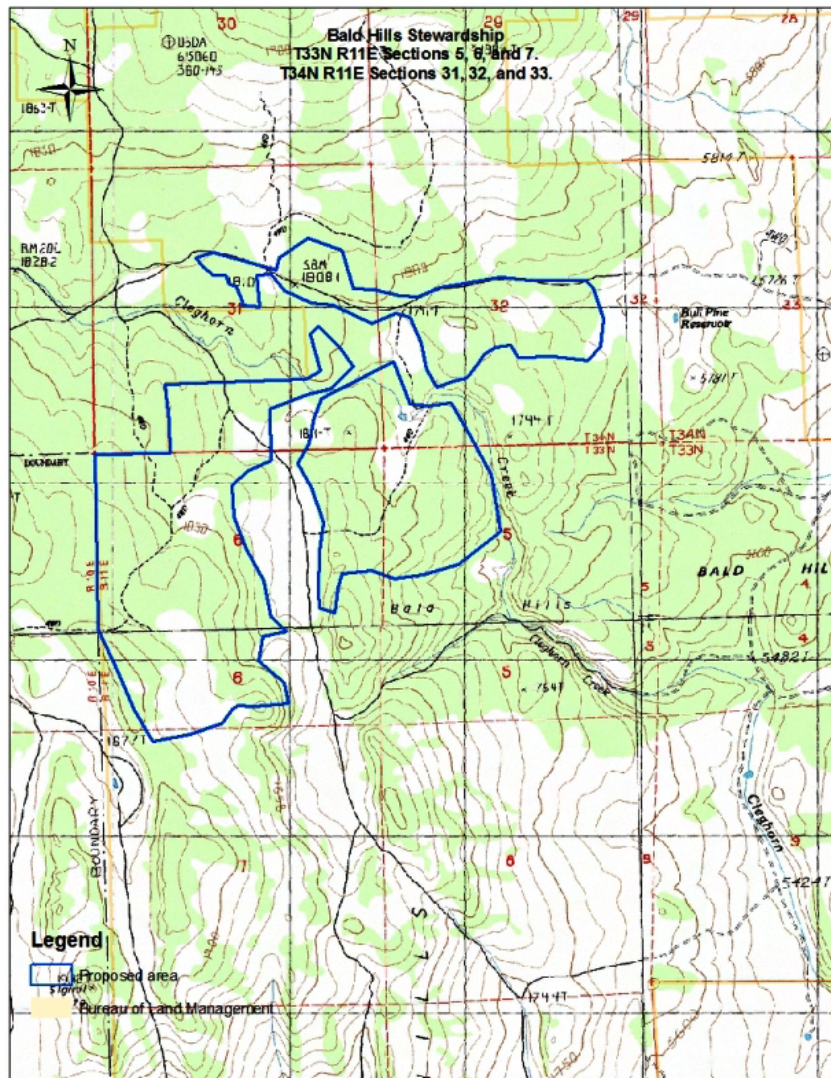
Agency or Agencies: BLM Eagle Lake Field Office

Project Name: Bald Hills Stewardship

Project Coordinates: W120.7568 N40.7609

Summary of Project: The BLM proposes to reduce the density of Jeffrey pine and western juniper on northwest of Eagle Lake (see Map). The primary objectives are to reduce the risk of high severity wildfire in the naturally regenerated stand and to increase spacing between trees in the plantations. The density along the Cleghorn Road will also be reduced which will enhance its use as a fire break. The secondary benefits include improving wildlife habitat by increasing the biodiversity of understory vegetation and enhancing forest stand resilience to insects and disease. The project is proposed for late 2011 or 2012. The primary treatment method will be mechanized thinning with biomass and sawtimber removal.

Project Map:



Lassen County CWPP 2011 Work Plan

WUI Area: Susanville

Funding: Funded

2011 Implementation

Number of Acres: 75

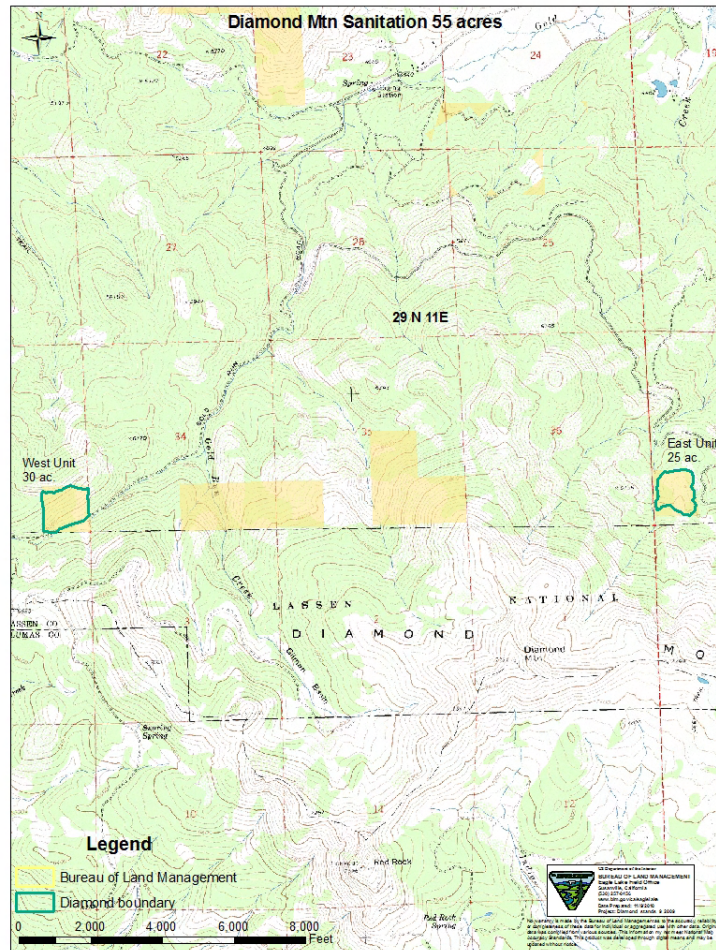
Agency or Agencies: BLM Eagle Lake Field Office

Project Name: Diamond Mountain Sanitation

Project Coordinates: W120.6777 N40.3248

Summary of Project: The proposed action, designed to reduce the spread of mountain pine beetle and various species of dwarf mistletoe infecting ponderosa and Jeffrey pine, will incorporate a sanitation harvest and free thinning method. The use of these two silvicultural treatments will not only reduce the spread of these pathogens but also reduce density dependent mortality of trees within this stand. The total area of the treatment is 75 acres. The harvest of infected trees will be both mechanized and hand felled. Harvest will target infected trees unless they are deemed to have wildlife value as snags. In the case of mistletoe, harvest of trees from around each wildlife tree will be done in order to reduce its spread. Additionally, the free thinning will be used to reduce tree density favoring the resilience of remaining late seral trees to insect, disease, and wildfire. Wood products will be utilized for sawlogs, biomass, and fuelwood.

Project Map:



Lassen County CWPP 2011 Work Plan

WUI Area: Non WUI

Funding: Funded

2011 Implementation

Number of Acres: 1500

Agency or Agencies: BLM ELFO

Project Name: Dodge Reservoir Stewardship

Project Coordinates: N40.9624 W120.1185

Summary of Project: Using Stewardship Contracting Authority, thin approximately 1500 acres over three years 2011-2013 using mechanical and hand treatments to reduce high densities of western juniper. The main objective is to improve sage grouse habitat, watershed health, reduce the threat of catastrophic wildfires and to restore the project area to a more healthy and productive plant community. Most of the material will be chipped and removed to be utilized as biomass for electricity production in local Co-Generation Plants. Completed (2010): 200 acres of mechanical thinning and 5 acres of hand thinning.

Project Map:



Lassen County CWPP 2011 Work Plan

WUI Area: Non WUI

Funding: Partially Funded

2011 Implementation

Number of Acres: 3500

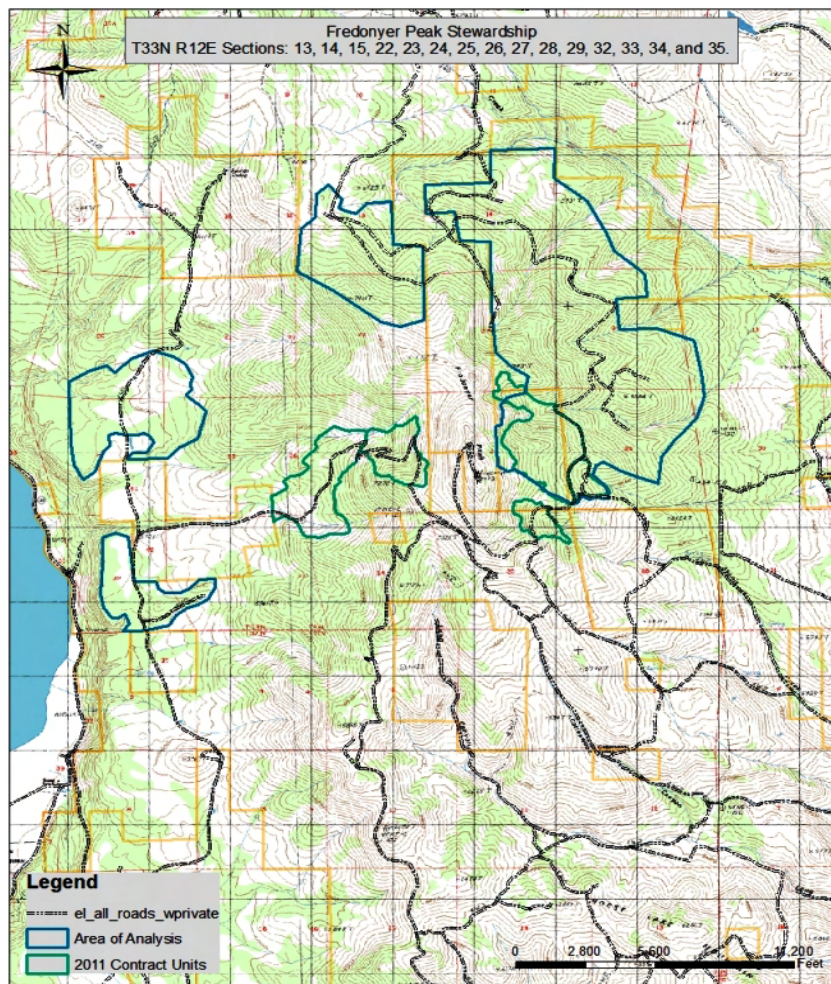
Agency or Agencies: BLM ELFO

Project Name: Fredonyer Peak Stewardship

Project Coordinates: W120.6068 N40.6888

Summary of Project: The BLM proposes to reduce the density of white fir and western juniper on up to 3500 acres on Fredonyer Peak (see Map). This project may be accomplished using the using the Stewardship Contracting authority. The primary objectives are to reduce the risk of high severity wildfire to the forest resources and watershed attributes, increase water yield to the Eagle Lake and Horse Lake basins, improve wildlife habitat by increasing the biodiversity of understory vegetation and primary production, and enhancing forest stand resilience to insects and disease. The treatment method will be mechanized harvest using conventional tractor harvesting systems and prescribed fire treatments. The primary forest product will be biomass (wood chips) that will be yarded from the stand as non-merchantable timber and transported to a cogen facility as well as some commercial sawtimber that will be transported to a sawmill facility. Work will begin in 2011 of 660 acres. This is a multi year project.

Project Map:



Lassen County CWPP 2011 Work Plan

WUI Area: Non WUI

Funding: Funded

2011 Implementation

Number of Acres: 10162

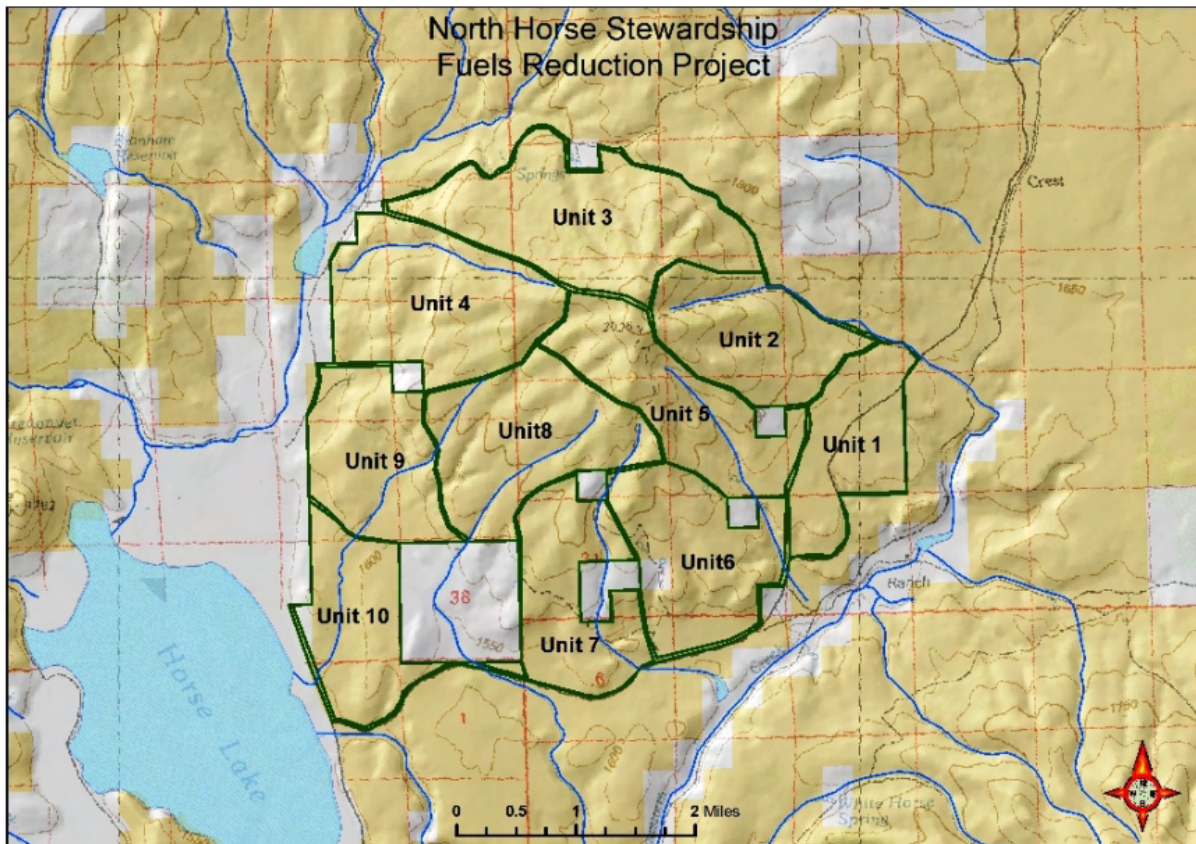
Agency or Agencies: BLM

Project Name: North Horse Stewardship

Project Coordinates: N40.6929 W120.4286

Summary of Project: The proposed action is to use a combination of mechanical and prescribed fire treatments over a ten year treatment schedule to reduce high densities of western juniper reducing the risk of catastrophic fire and restoring the project area to a more healthy and productive plant community. Total project area is approximately 10,000 acres. Most of the material will be chipped and removed to be utilized as biomass for electricity production in local Co-Generation Plants. Accomplished (2010): 665 acres of mechanical thinning, 100 acres of handthinning/piling, and 125 acres of pile burning. Planned (2011): 1,000 acres of mechanical thinning, 100 acres of handthinning/piling, and 100 acres of pile burning.

Project Map:



Lassen County CWPP 2011 Work Plan

WUI Area: Eagle Lake/Stones Landing

Funding: Funded

2011 Implementation

Number of Acres: 88

Agency or Agencies: BLM Eagle Lake Field Office

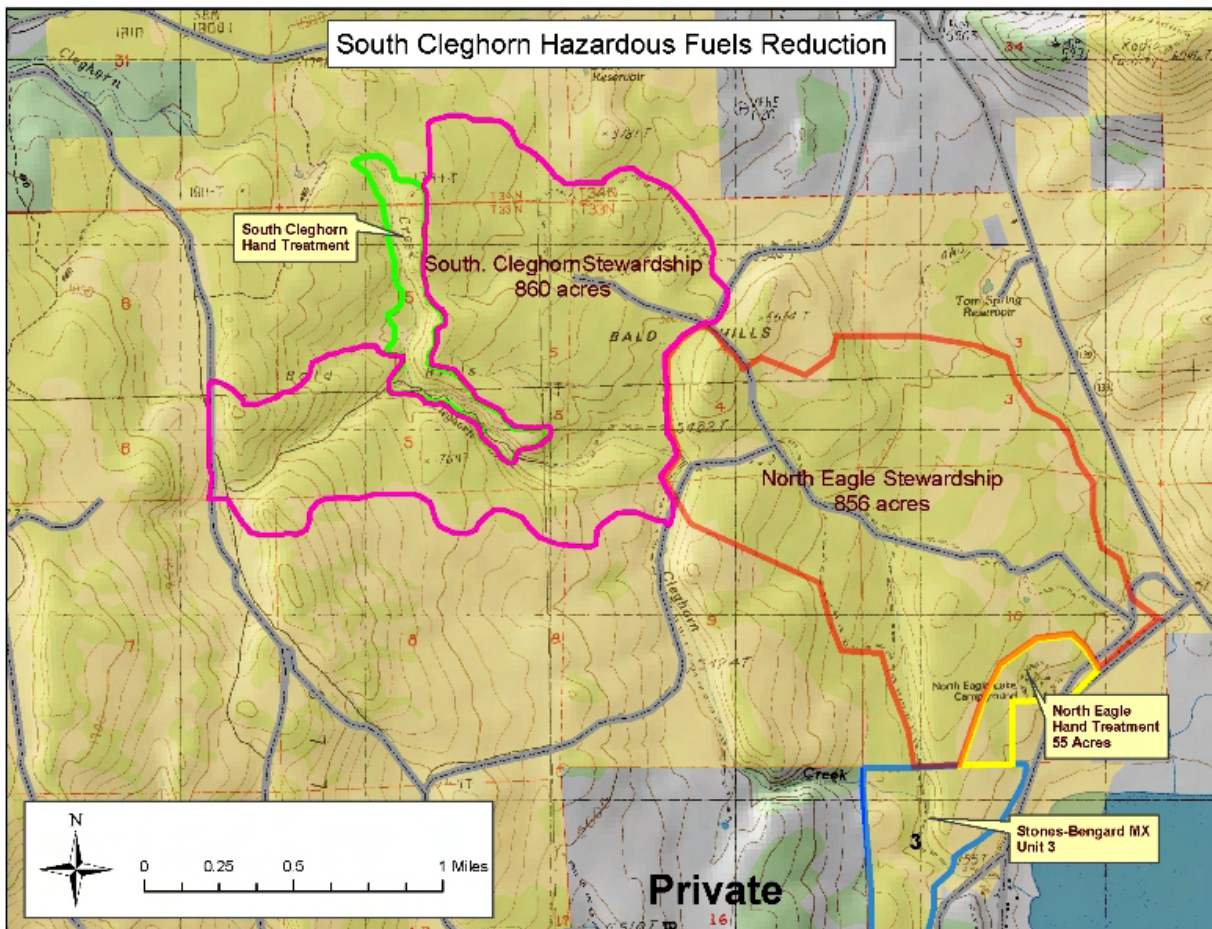
Project Name: South Cleghorn Stewardship

Project Coordinates: N40.7521 W120.7507

Summary of Project: Using Stewardship Contracting Authority, 860 acres were treated 2008-2009 using a variety of mechanical means to reduce wildland fuels. The main objective is to reduce the risk of catastrophic wildfire to the community of Stones-Bengard. A small hand treatment area of 88 acres is also identified along Cleghorn Creek to protect the stream bed from mechanical operations. Treatment began in 2009, by crews using chainsaws to reduce the current density of juniper and pine, and was completed during the summer of 2010. The piles generated were burned during December 2010.

Broadcast Underburning is in the planning phase for 2012-2014 for this project area and the North Eagle Stewardship area also shown on the map.

Project Map:



Lassen County CWPP 2011 Work Plan

WUI Area: Eagle Lake/Stones Landing

Funding: Funded

2011 Implementation

Number of Acres: 1813

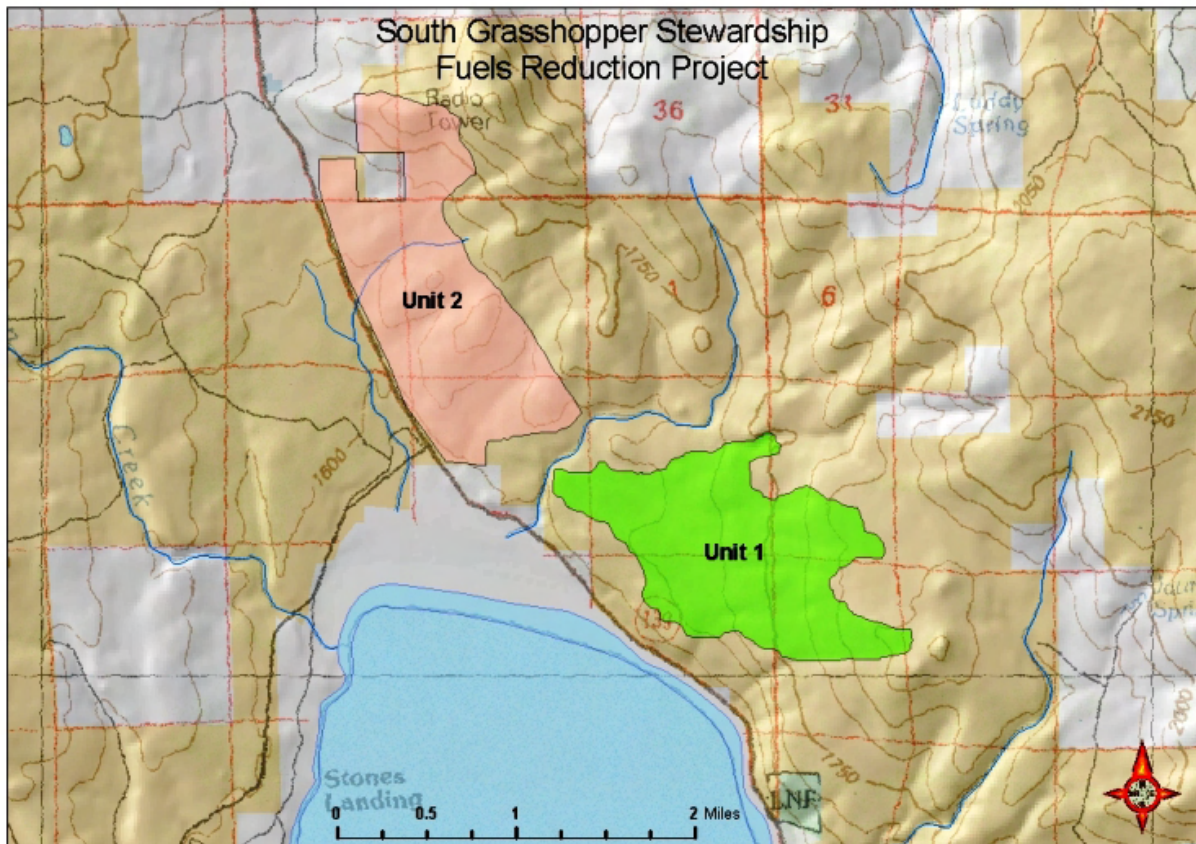
Agency or Agencies: BLM Eagle Lake Field Office

Project Name: South Grasshopper Stewardship

Project Coordinates: N40.7298 W120.6770

Summary of Project: Using Stewardship Contracting Authority, thin 1815 acres using a combination of mechanical and prescribed fire treatments to reduce high densities of western juniper. The main objective is to reduce the threat of catastrophic wildfires and restore the project area to a more healthy and productive plant community. Most of the material will be chipped and removed to be utilized as biomass for electricity production in local Co-Generation Plants. This project is being funded by ARRA (American Recovery and Reinvestment Act). Completed (2010): 1,000 acres of mechanical thinning and biomass utilization, 65 acres of handthinning/pile construction. Planned (2011): 35 acres of handthinning/pile construction, 100 acres of pile burning. Planned (2012): 500 acres of mechanical thinning and 100 acres of handthinning/pile construction.

Project Map:



Lassen County CWPP 2011 Work Plan

WUI Area: Eagle Lake/Stones Bengard

Funding: Funded

2011 Implementation

Number of Acres: 45

Agency or Agencies: BLM Eagle Lake Field Office

Project Name: Stones-Bengard Hazardous Fuels Reduction

Project Coordinates: N40.7117 W120.7321

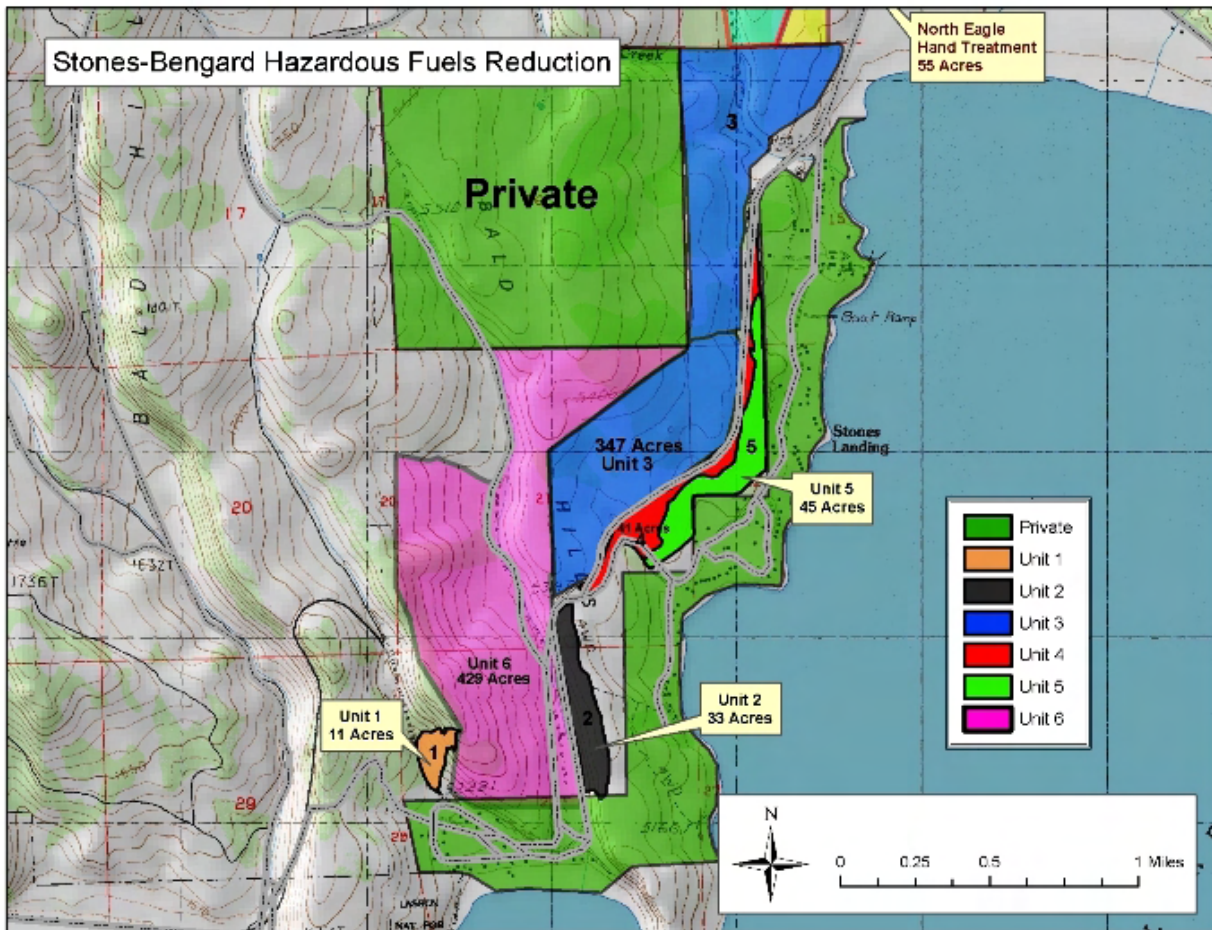
Summary of Project: Proposed Action (completed mechanical)

Using Stewardship Contracting Authority, the BLM Eagle Lake Field Office completed thinning approximately 776 acres using a variety of mechanical means to reduce wildland fuels (units 3 and 6 below). The main objective is to reduce the risk of catastrophic wildfire to the community of Stones-Bengard.

Additional hand pile construction and burning have been completed in units 1, 2 and 4 for 85 acres.

Hand thinning and pile construction completed in 2010 on 45 acres in unit 5 and is scheduled for pile burning in 2011 which will complete the Stones-Bengard project. Maintenance will be conducted as needed.

Project Map:



Lassen County CWPP 2011 Work Plan

WUI Area: Cambell Management Area

Funding: Funded

2011 Implementation

Number of Acres: 718

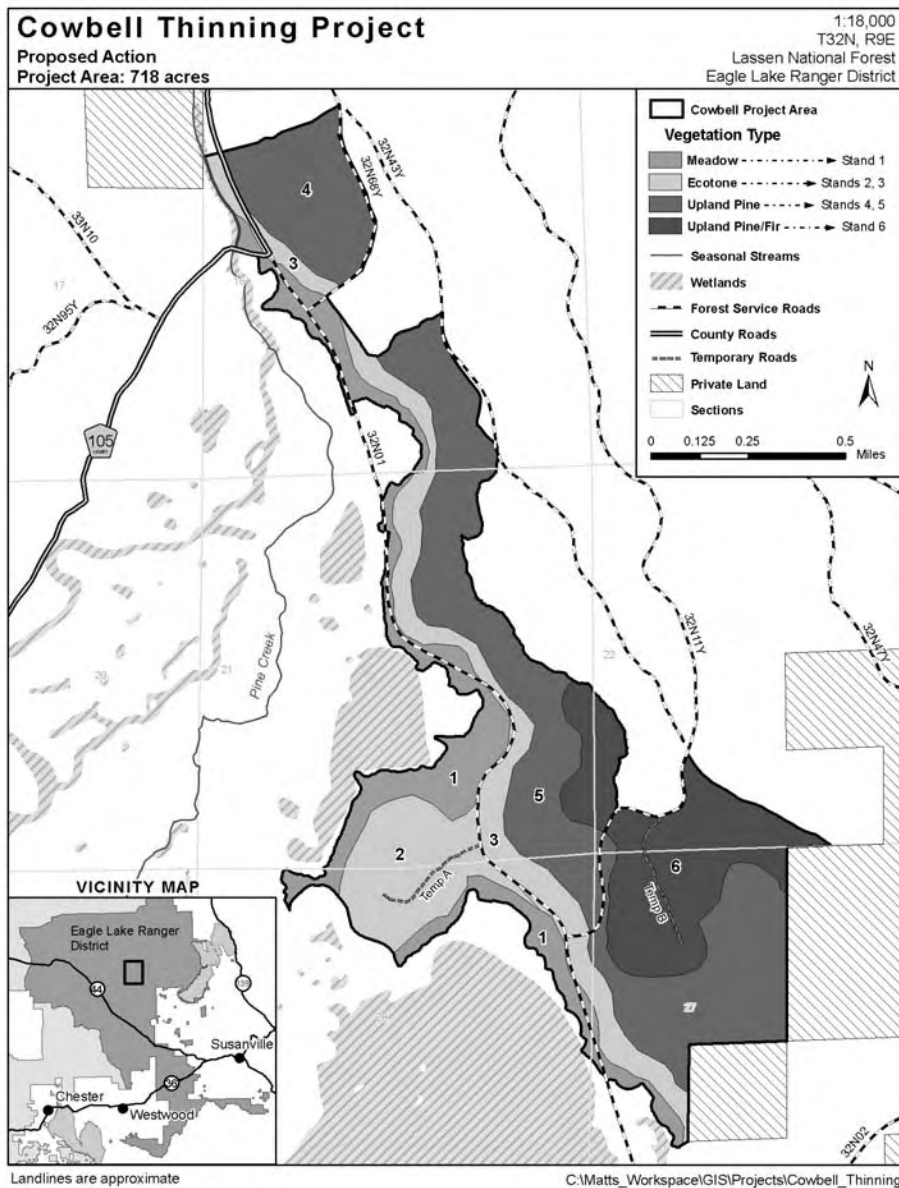
Agency or Agencies: USFS

Project Name: Cowbell Thinning Project

Project Coordinates: 40.62124 120.96823

Summary of Project: The Eagle Lake Ranger District is proposing the construction of DFPZs (defensible fuel profile zone). The objective being the reduction of horizontal and vertical fuels. Proposed treatment would include biomass removal and thinning.

Project Map:



Lassen County CWPP 2011 Work Plan

WUI Area: Crater Management Area

Funding: Funded

2011 Implementation

Number of Acres: 275

Agency or Agencies: USFS

Project Name: Crater Underburn

Project Coordinates: N40.6358 W121.10419

Summary of Project: Reintroduce fire into the ecosystem, reduction of fuel loading within a DFPZ and maintain and begin the process of restoring a more natural fir regime with the use of prescribed fire.

Project Map:



Lassen County CWPP 2011 Work Plan

WUI Area: Diamond Management area

Funding: Funded

2011 Planning

Number of Acres:

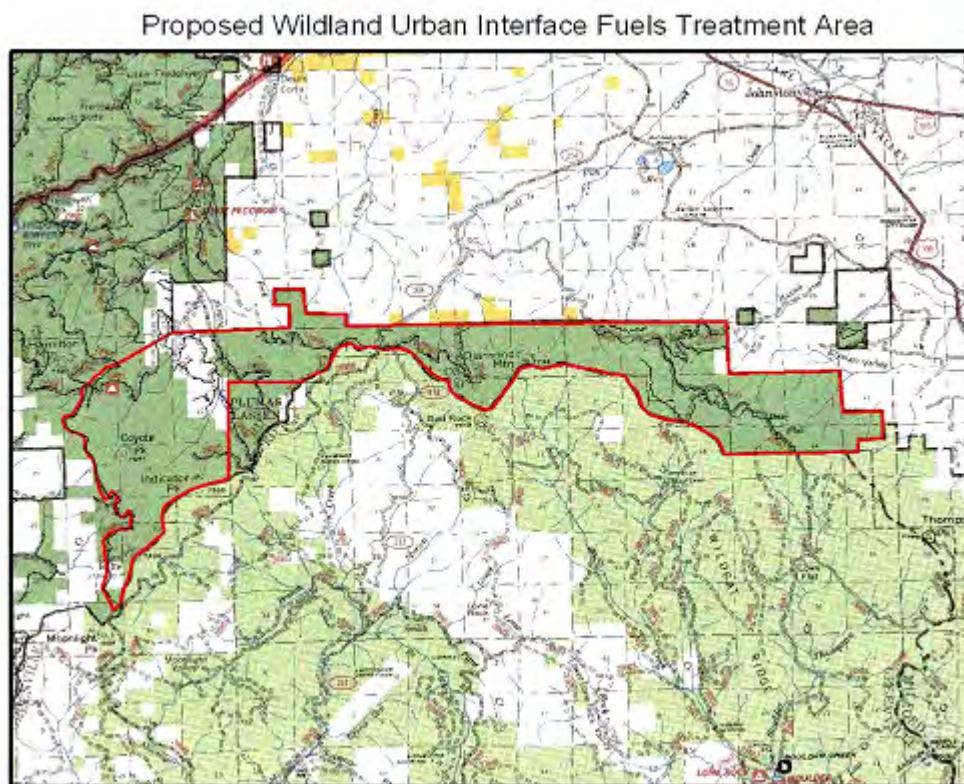
Agency or Agencies: USFS

Project Name: North Diamond WUI NEPA

Project Coordinates: N40.3125 W120.6833

Summary of Project: The Eagle Lake RD is proposing to create DFPZ's on FS lands to provide protection from wildfire around or near the communities of Susanville, Janesville and out lying residences in the proximity of Forest Service lands in the Diamond Mountain Area. Development of proposed action is progress.

Project Map:



Lassen County CWPP 2011 Work Plan

WUI Area: Cone Management area

Funding: Funded

2011 Implementation

Number of Acres: 101

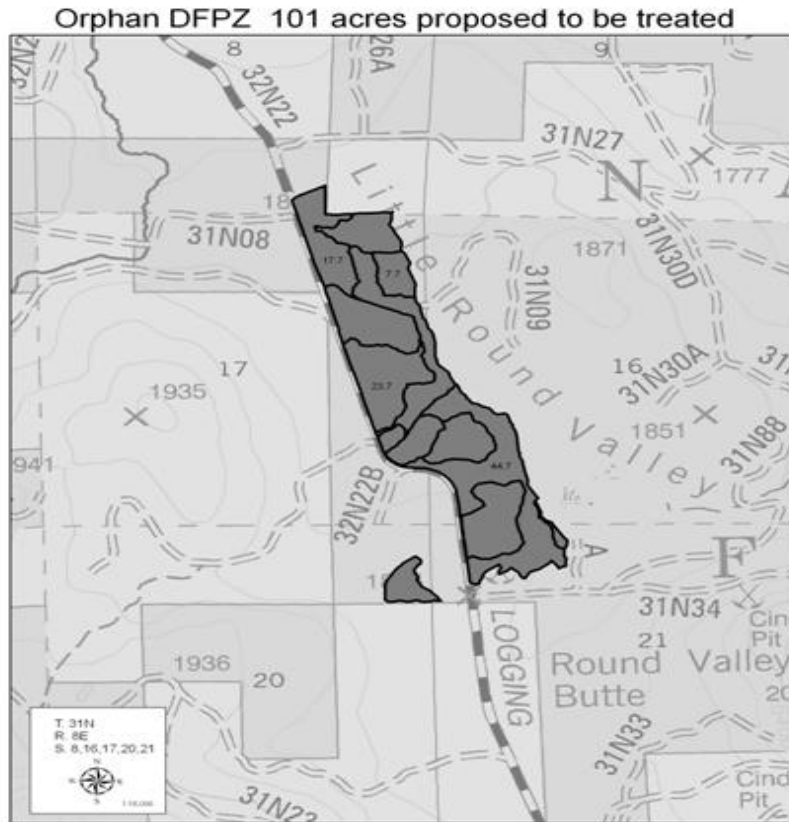
Agency or Agencies: USFS

Project Name: Orphan DFPZ STWD

Project Coordinates: N40.54873 W121.10482

Summary of Project: The Eagle Lake Ranger District is proposing the construction of DFPZs (defensible fuel profile zone) along three of the forests main roads 32N22, and 30N23 the objective being the reduction of fuels. Proposed treatment would include biomass removal and thinning. Subsequent treatment would include prescribed burning of the activity generated fuels. A total of 101 acres are proposed for treatment. Proposed as a Stewardship Contract, this project is a collaborative effort to keep the public informed and involved with projects on the Eagle Lake Ranger District. This project is intended for implementation in 2011.

Project Map:



Lassen County CWPP 2011 Work Plan

WUI Area: Management Area

Funding: Partially Funded

2011 Implementation

Number of Acres: 990

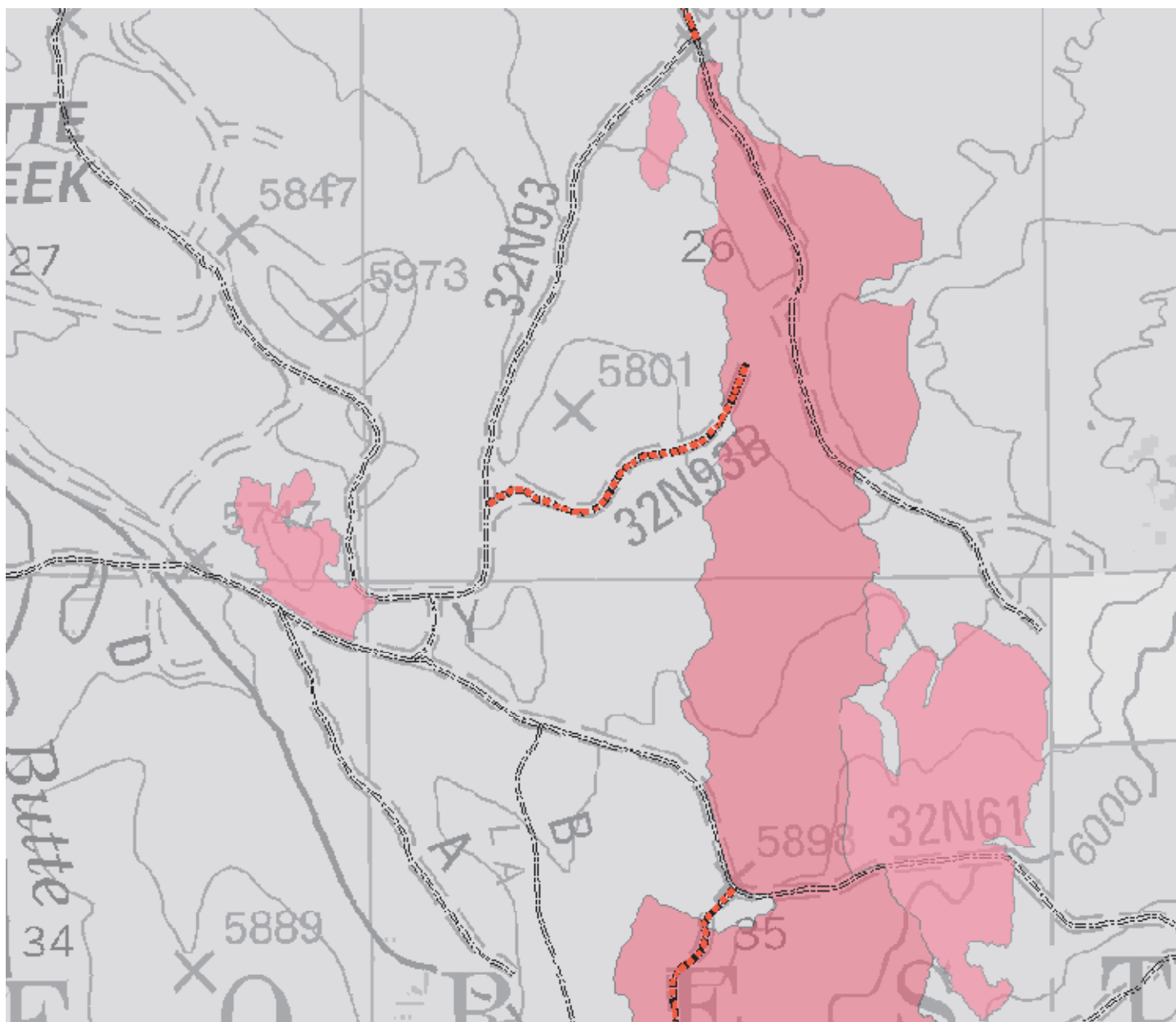
Agency or Agencies: USFS

Project Name: Pole Spring Plantation Mastication

Project Coordinates: N40.6066 W121.6833

Summary of Project: To break up the continuity of natural fuels (brush and seedlings) to improve the survivability against wildfire within a 20 year old plantation,

Project Map:



Lassen County CWPP 2011 Work Plan

WUI Area: McCoy Management area

Funding: Funded

2011 Implementation

Number of Acres: 41

Agency or Agencies: USFS

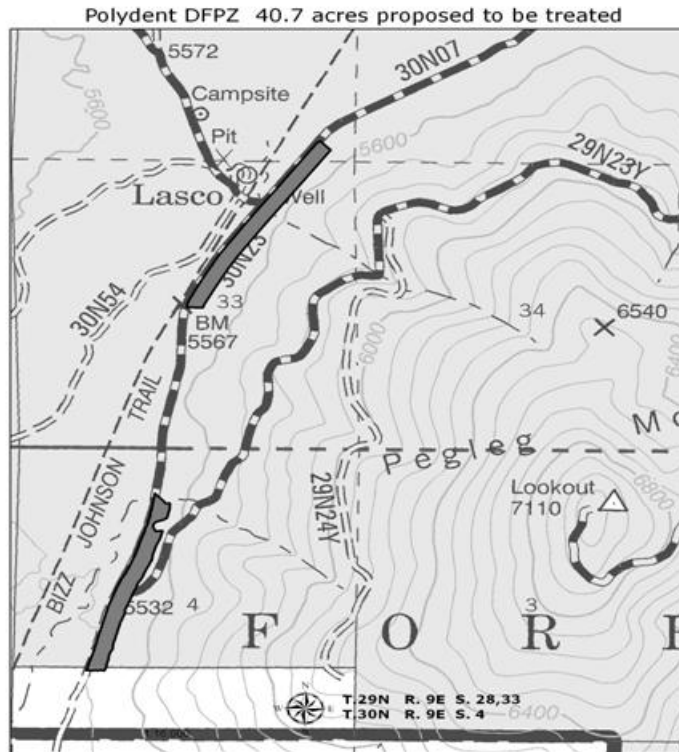
Project Name: Polydent DFPZ STWD

Project Coordinates: N40.43172 W120.95658

Summary of Project: The Eagle Lake Ranger District is proposing the construction of DFPZs (defensible fuel profile zone) along three of the forests main road 30N07, the objective being the reduction of fuels. Proposed treatment would include biomass removal and thinning. Subsequent treatment would include prescribed burning of the activity generated fuels. A total of 41 acres are proposed for treatment.

Proposed as a Stewardship Contract, this project is a collaborative effort to keep the public informed and involved with projects on the Eagle Lake Ranger District. This project is intended for implementation in 2011.

Project Map:



Lassen County CWPP 2011 Work Plan

WUI Area: DFPZ

Funding: Funded

2011 Implementation

Number of Acres: 1,233

Agency or Agencies: USFS

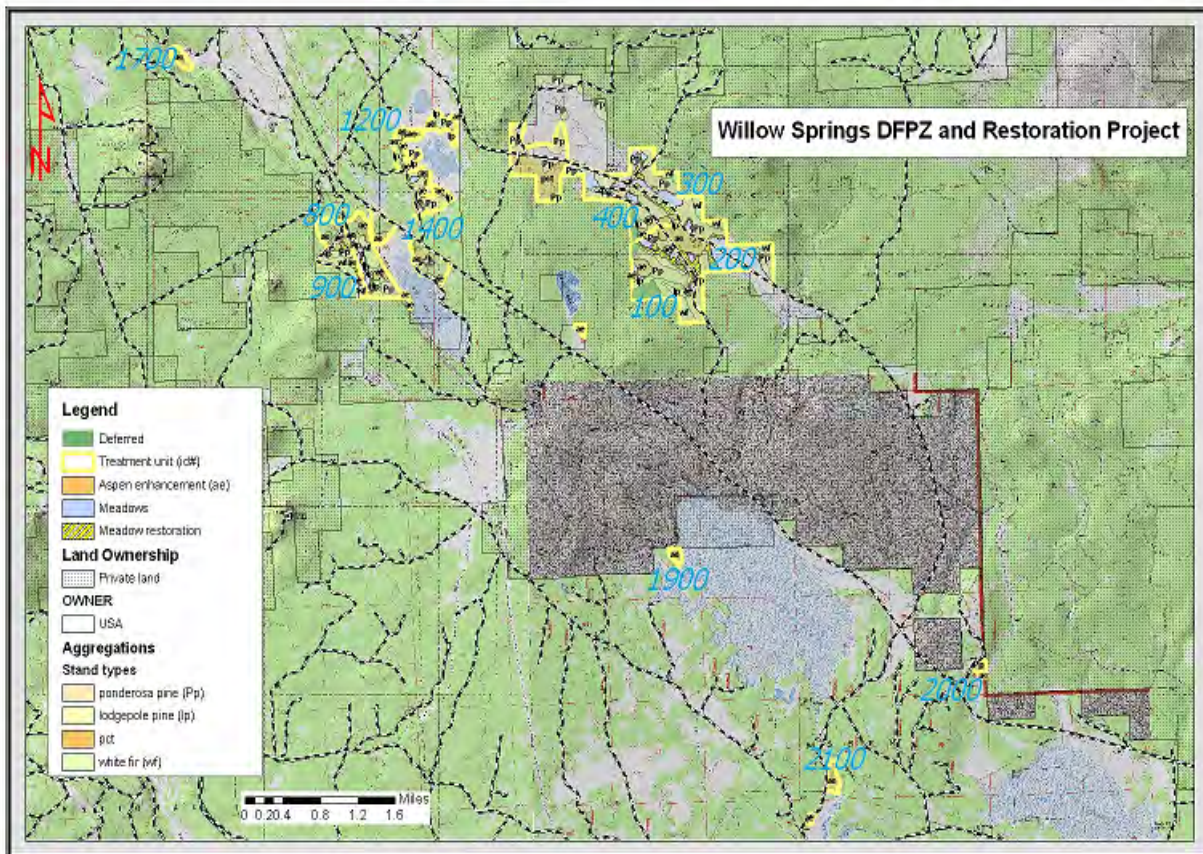
Project Name: Willow DFPZ

Project Coordinates: N40.46095 W120.91866

Summary of Project: The Eagle Lake Ranger District is proposing the construction of DFPZs (defensible fuel profile zone). The objective being the reduction of horizontal and vertical fuels. Proposed treatment would include biomass removal and thinning. Subsequent treatment would include prescribed burning of the activity generated fuels. A total of 1233 acres are proposed for treatment.

This project is intended for implementation in 2011.

Project Map:



Lassen County CWPP 2011 Work Plan

WUI Area: None

Funding: Funded

2011 Planning

Number of Acres: 5340

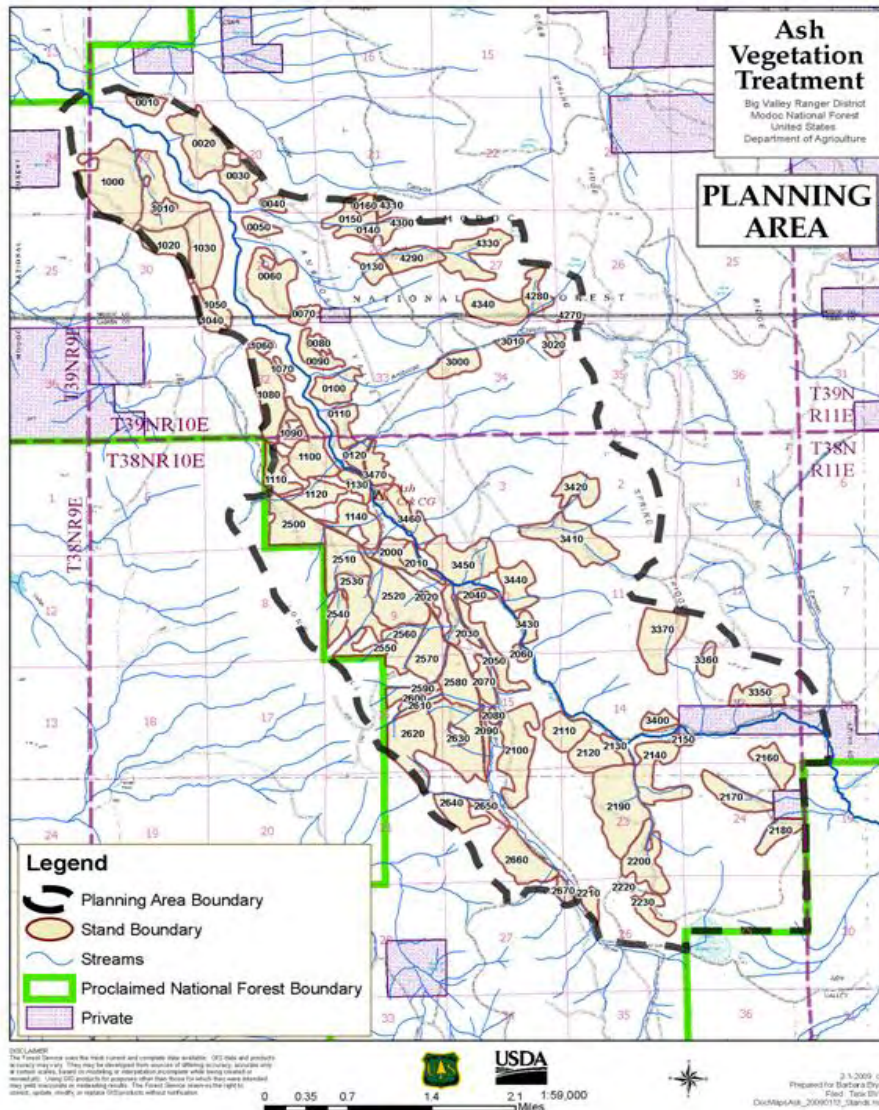
Agency or Agencies: USFS, Modoc NF, BVRD

Project Name: Ash Vegetation Treatment

Project Coordinates: 41.155945 120.816693

Summary of Project: The Ash Vegetation Treatment project will implement thinning and underburning of timber stands to reduce the susceptibility of western pine beetle and mountain pine beetle attacks; improve forest health and wildlife habitat; and reduce the risks of large scale catastrophic wildfires to forest and private land. This project is still in the planning stages with the NEPA documentation being completed

Project Map:



Lassen County CWPP 2011 Work Plan

WUI Area: None

Funding: Funded

2011 Planning

Number of Acres: 93

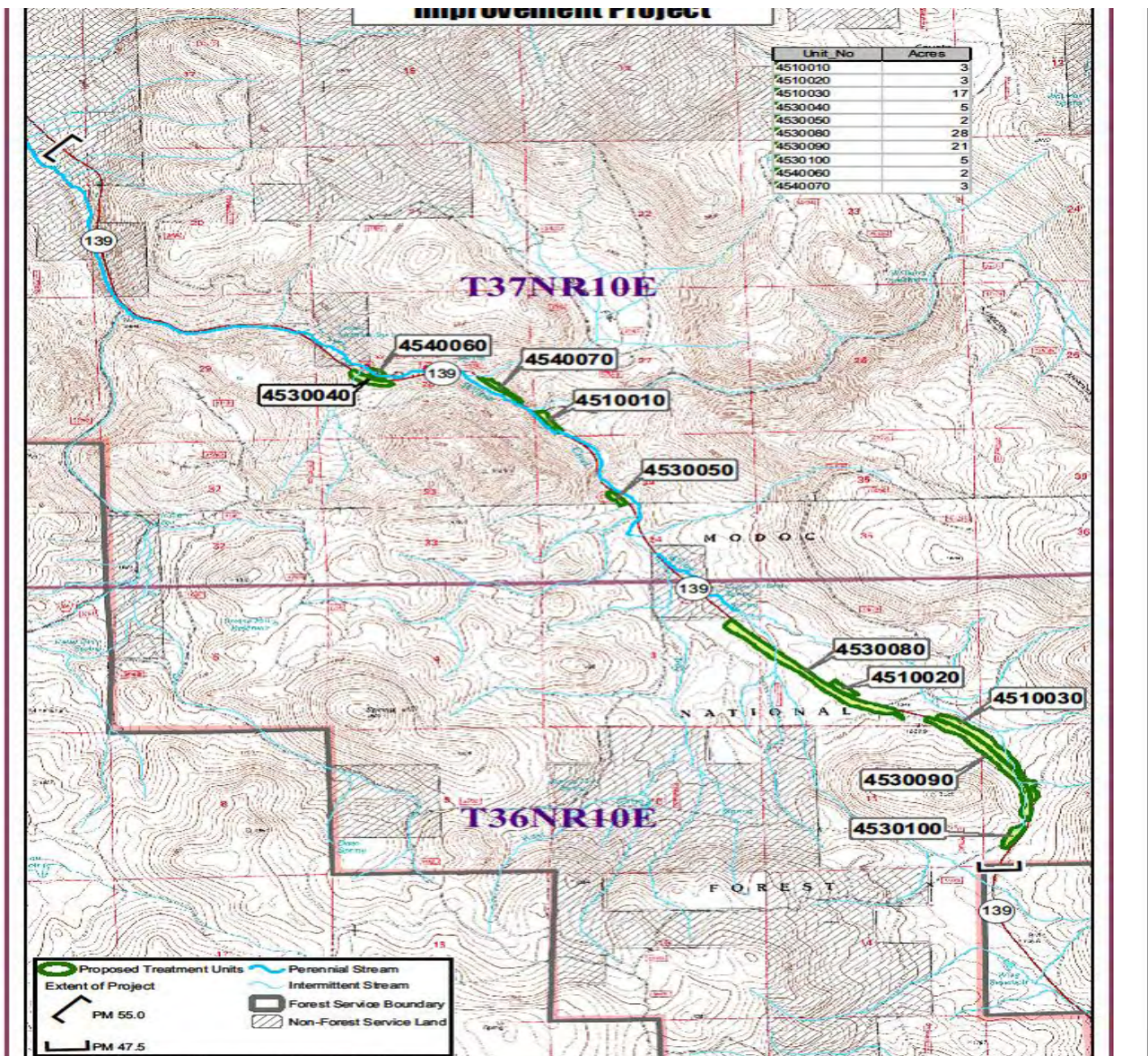
Agency or Agencies: USFS, Modoc NF, BVRD

Project Name: Willow Creek Highway Safety Improvement Project

Project Coordinates: 40.992227 120.803575

Summary of Project: This project was started summer 2010 and is currently in progress. The project includes the removal of hazard trees from mile markers 47.5 to 55 on Highway 139 in Lassen Co. Stand thinning will also occur where necessary to improve forest health and reduce the risks of wildfire.

Project Map:





United States
Department of
Agriculture

Forest
Service
National
Forest

159 Lawrence Street
P.O. Box 11500
Quincy, CA 95971-6025
(530) 283-2050 Voice
(530) 534-7984 Text (TDD)

Plumas National Forest Vegetation Management Goal and Strategy

The goal of the Plumas National Forest vegetation management programs is to achieve sustainable communities and sustainable vegetation across the landscape by providing healthy, resilient forests and reducing the threat of catastrophic fires. This goal will be accomplished by integrating several programs in a way that enables the PNF to reduce hazardous fuels, provide commercial products, and coordinate vegetation management activities with those of private landowners.

Attaining the goal involves linking past and future fuel treatments across the landscape to take advantage of natural and human made barriers, as well as collaborating with local partners. Some of these priorities include:

- Implementing the Herger-Feinstein Quincy Library Group Forest Recovery Act
- Reducing fuels in wild land-urban interfaces or intermixes (WUI's)
- Reducing fire hazards on lands near key community infrastructure, such as power, water, communication systems, and municipal watersheds
- Reducing the threat of catastrophic fire for habitat for designated threatened, endangered, and sensitive species
- Addressing forest health problems, such as insect and disease infestations

The Plumas National Forest will annually share its long range plan with our local partners to provide for a collaborative effort towards reaching our similar goals.

