

COMMUNITY WILDFIRE PROTECTION PLAN

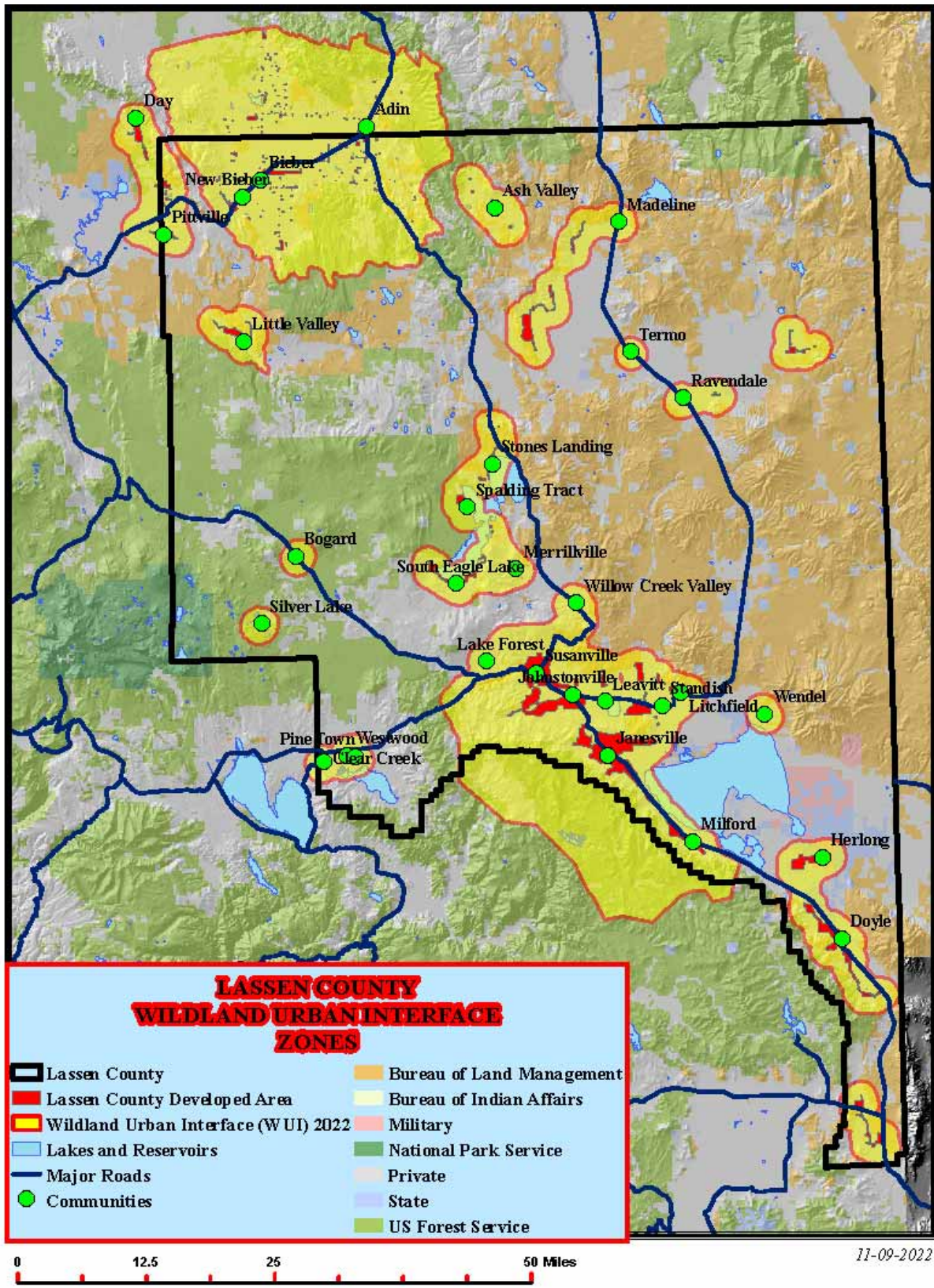
2022 Projects Ranking



Lassen County
April 2022 – April 2023

Table of Contents

Cheney Creek Fuel.....	7
South Eagle Lake	9
Thompson Peak Initiative	10
Doyle.....	12
Dyer Mountain Initiative	14
Madeline	16
Little Valley	17
Dixie East & Beckwourth Reforestation	19
Big Valley Mountain	20
Diamond Mountain Initiative	21
Spaulding.....	22
Dixie West Reforestation	24
Ash Valley III.....	25
McBride Springs	26
Hog Sheep Fire Reforestation	28
McClelland	30
Mountain Meadows & SIR Reforestation.....	31
Letter Box	32

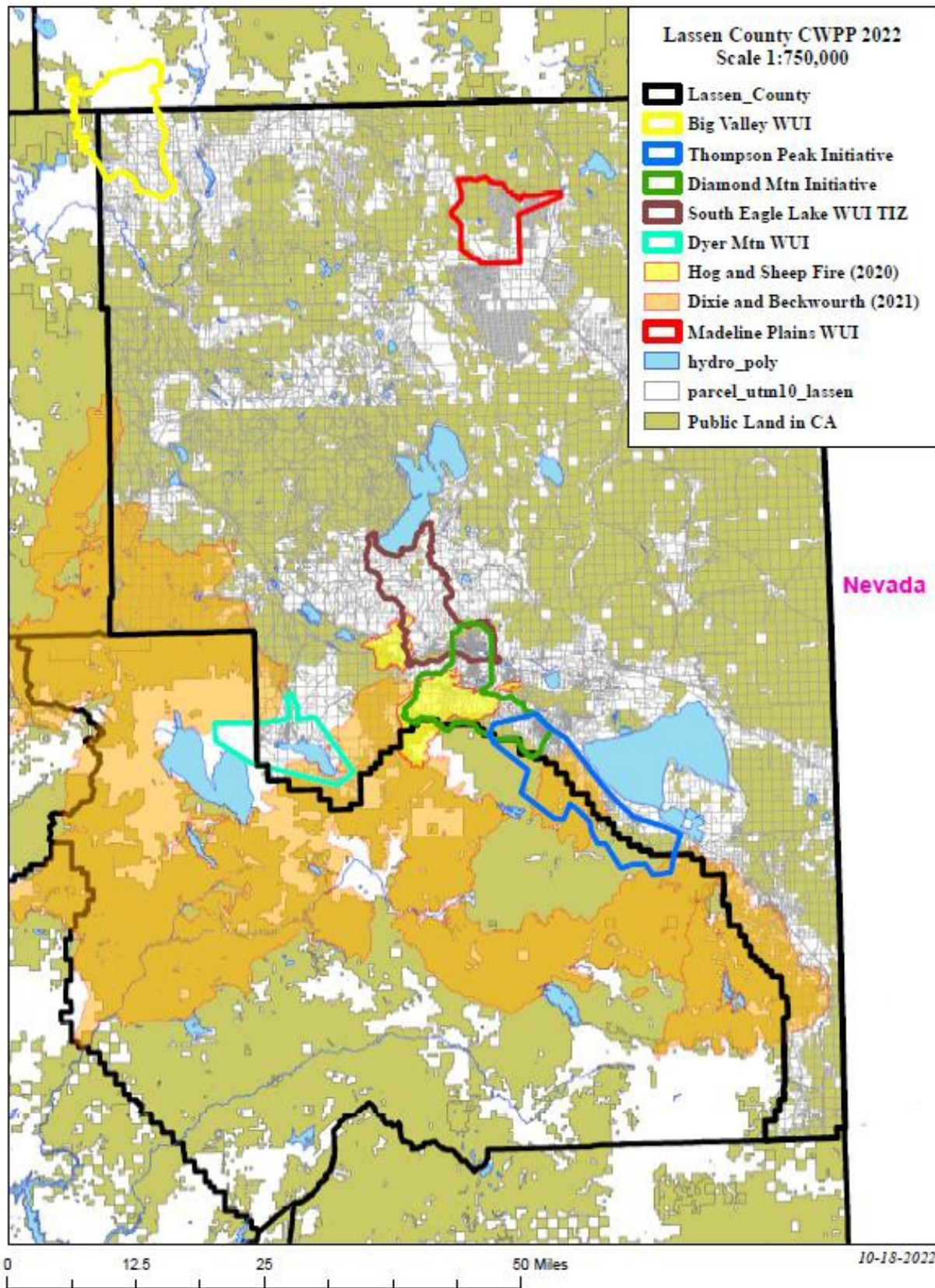


The Lassen County CWPP Work Plan ranks private land projects in a collaborative process that considers:

1. Guidelines recommended by the National Association of State Foresters, which state *“Projects are prioritized based on the probability of success, community involvement and collaboration, and sustainability”*¹, and;
2. CalFire, Lassen Modoc Unit ranking criteria, and;
3. Input from all Annual CWPP Work Plan participants; Annual ranking is adopted by consensus.

The 2022 Ranked Projects are primarily the same as on the 2021 Rankings, but ranking has been reordered. Additionally, there were three new projects added for a total of eighteen projects: Dixie West Reforestation, Mountain Meadows & SIR Reforestation, Dixie East & Beckwourth Reforestation. For 2023, we intend to have the Ranked Projects be the main focus of the CWPP, ensuring they continue to progress. We also want to be sure that the project rankings reflect the most critical projects to support a comprehensive, cooperative, integrated plan to better protect our communities. This will require regular collaboration throughout the year among agencies on these projects for both planning and funding, so that each year we can document progress towards completion. It may also mean additions and deletions from this list as the working group analyzes these projects based on new emphasis.

2022 Lassen County CWPP Ranking Worksheet														
CWPP Ranking	Project	Community Involvement	Probability of Success	Collaboration	Sustainability	Match	% of Match Available	Total CWPP Criteria Points	CAL FIRE History	CAL FIRE Threat	CAL FIRE Response	CAL FIRE Proximity	CAL FIRE Scores	Combined Scores
1	Cheney Creek Fuel	5	5	5	5	5	100	25					16	41
2	South Eagle Lake	5	5	5	5	5	100	25					14	39
3	Thompson Peak Initiative	5	5	5	5	5	100	25					12	37
4	Doyle	3	4	5	3	2	40	17					17	34
5	Dyer Mountain Initiative	5	5	5	5	5	100	25					7	32
5	Madeline	2	4	4	3	5	100	18					14	32
5	Little Valley	3	5	5	5	5	100	23					9	32
6	Dixie East & Beckwourth Reforestation	5	5	3	3	2	100	18					10	28
7	Big Valley Mountain	5	5	5	4	3	60	22					5	27
7	Diamond Mountain Initiative	5	2	3	2	5	100	17					10	27
8	Spaulding	5	3	3	5	2	40	18					8	26
9	Dixie West Reforestation	5	5	3	3	2	100	18					7	25
10	Ash Valley III	1	3	1	5	5	100	15					9	24
11	McBride Springs	1	2	2	5	5	100	15					8	23
11	Hog Sheep Fire Reforestation	5	5	3	3	2	100	18					5	23
12	McClelland	3	3	1	3	5	100	15					7	22
12	Mountain Meadows & SIR Reforestation	5	5	3	3	2	100	18					4	22
13	Letter Box	1	4	3	5	1	20	14					7	21



WUI Area: Susanville

Funding: Planning, Not Funded

Number of Acres: N/A

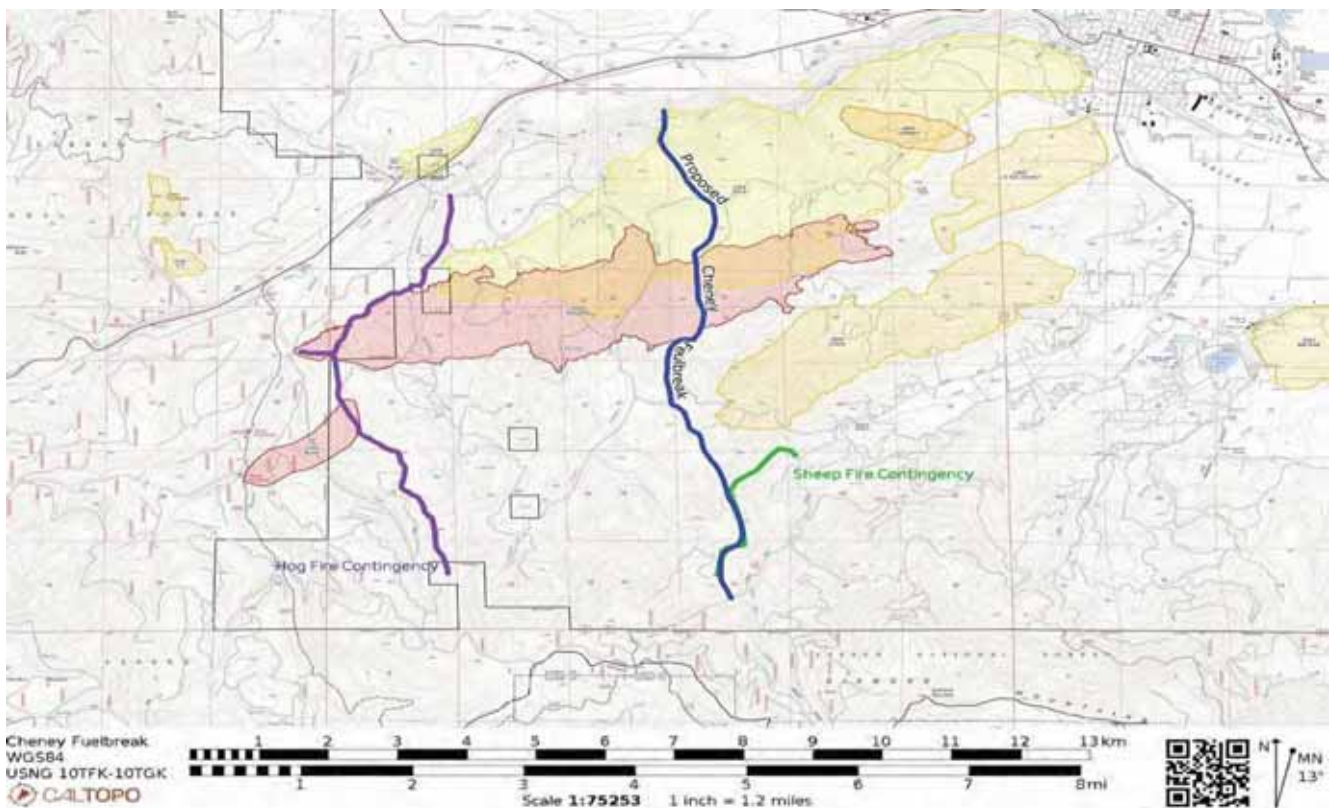
Agencies: CALFIRE, LFSC, Private Landowners, BLM

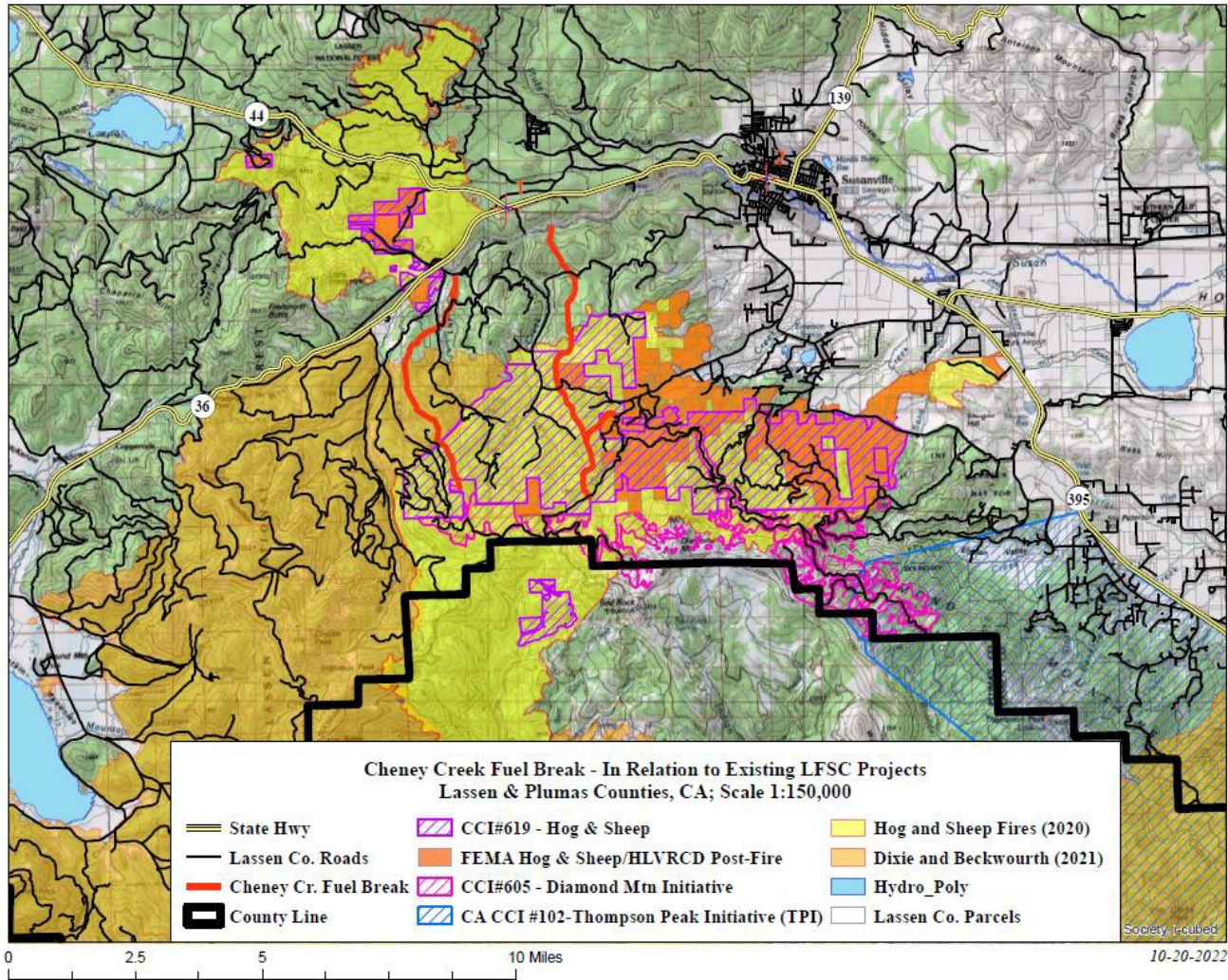
Name: **CHENEY CREEK FUEL BREAK**

Project Coordinates: 40.3524 120.7338

Summary of Project: The Cheney Creek project is a critical project that will create a fuel break approximately 6 miles in length spanning from Susan River south to Gold Run Road, with the intention of stopping the spread of fire into the community of Susanville. It has moved from #3 on the 2021 rankings to #1 on the 2022 rankings after the Dixie, Hog & Sheep fires. A large portion of this project will focus on thinning, pruning and treatment of ground fuels through the Devil Fire and Willard Fire plantations on private industrial timberland. A small portion of the project may also involve BLM lands. Treatment options will include both mechanical and hand treatments, as well as prescribed fire after. Cal Fire will initiate the formation of a working group of the involved agencies, which LFSC will facilitate, to determine feasibility, scope/acreage, budget, and timeline for completion. We hope this will be the first step in a comprehensive plan to better protect the community.

Project Map:





WUI Area: South Eagle Lake/Susanville
2022 Implementation

Funding: Partially Funded

Number of Acres: 5737 Agency or

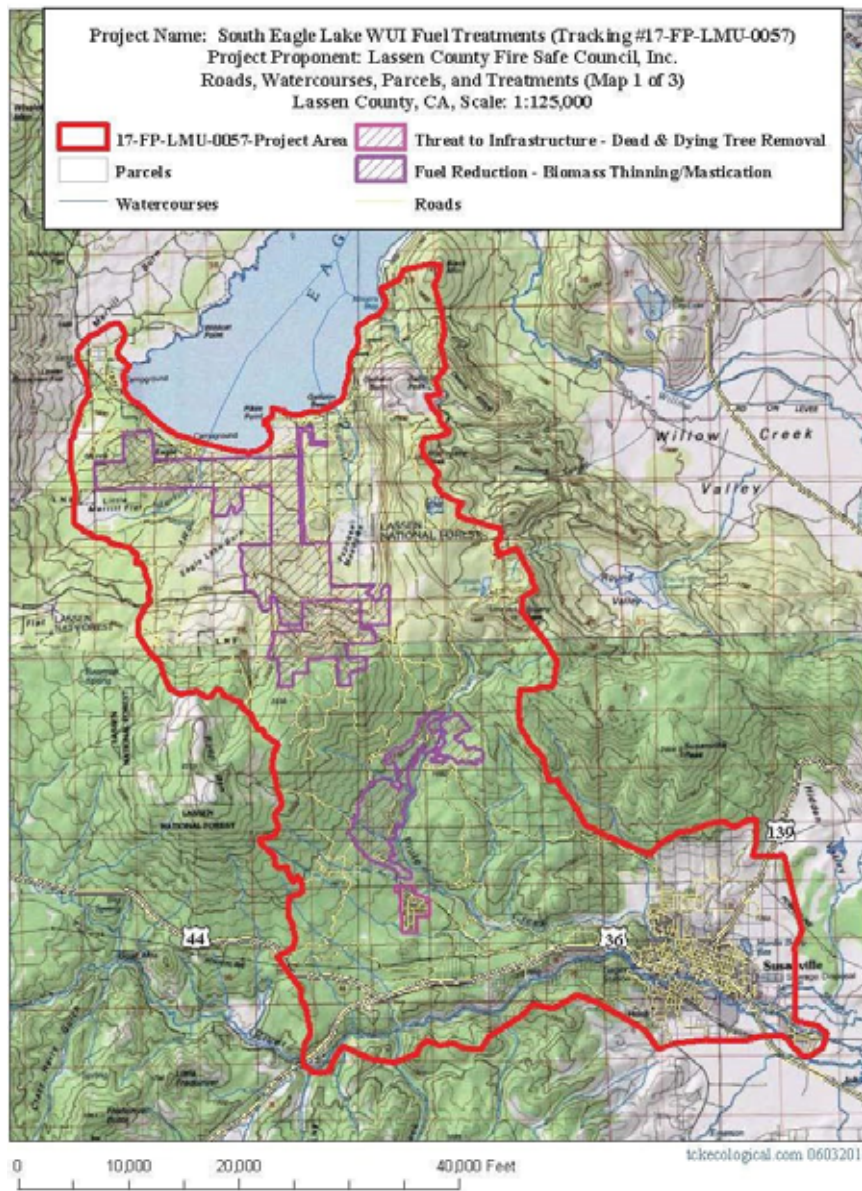
Agencies: LFSC, WMB, SPI, CAL FIRE, HLVRCD, CALTRANS

Project Name: **SOUTH EAGLE LAKE/LAKE FOREST, FOREST & WATERSHED RESTORATION**

Project Coordinates: 40 32 22 120 47 1

Summary of Project: Additional Biomass thinning of plantations and native forests, mastication and emergent brush treatments to restore forest and watershed as well as removal of trees around structures in the Lake Forest community may be applied for. Project merged our previous Eagles Nest and North Susanville projects.

Project Map:



WUI Area: South Eagle Lake/Susanville Funding: Partially Funded

Funded Implementation Number of Acres: 60,000

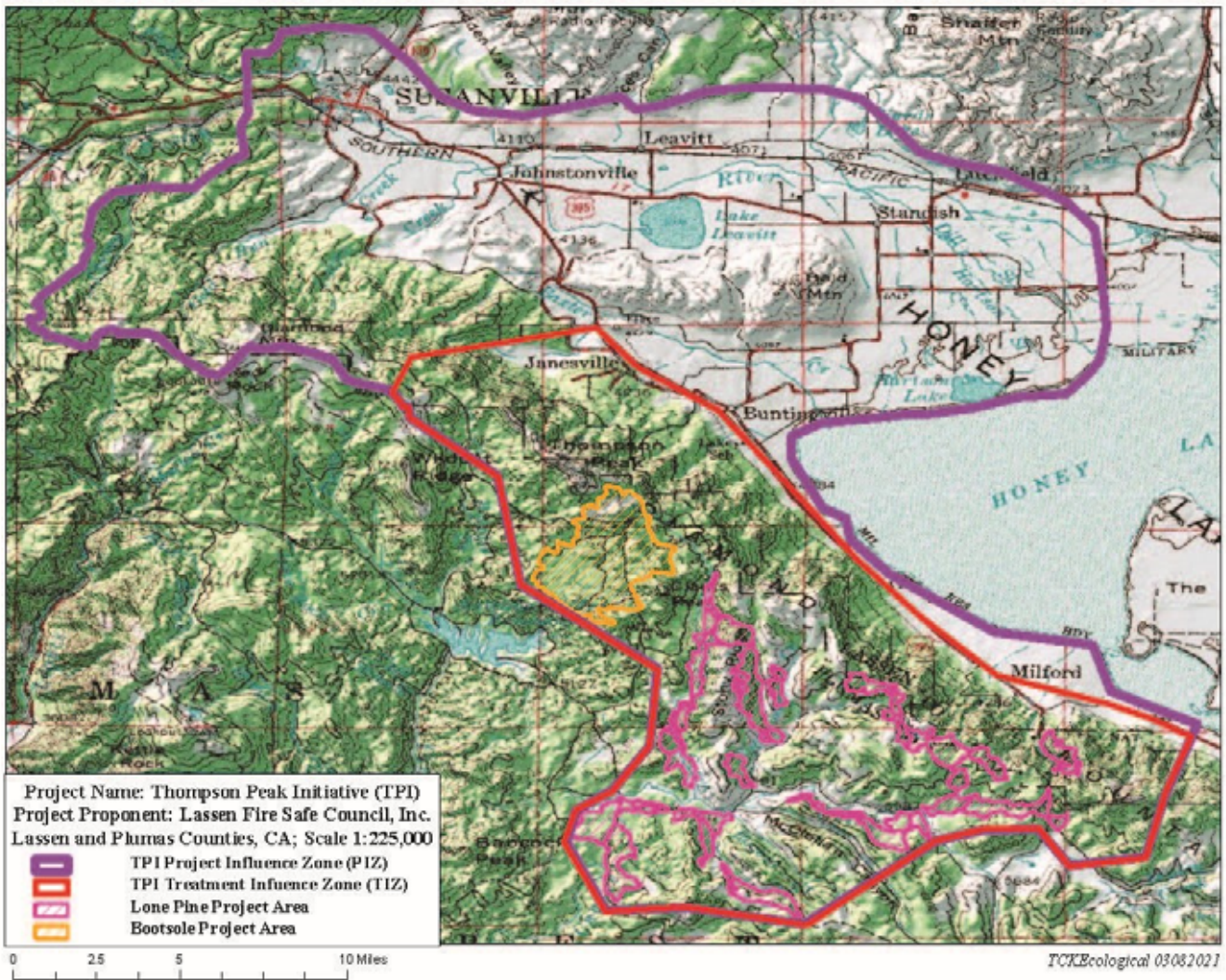
Agency or Agencies: LCSC, SIR, Janesville, Milford, HLVRCD, PNF, CALFIRE, SNC

Project Name: **THOMPSON PEAK INITIATIVE (TPI)**

Project Coordinates: N40.26777 W120.49461

Summary of Project: The original TPI grant has been expanded to 60,000 acres of NEPA planning (Eastside Communities) & fuels treatment, combining the Cal Fire TPI project, SNC Bootsole project, & SNC 1275/Plumas Nat'l Forest Eastside Communities project. Combined projects are a continuation of the 2014 fuel treatments and Risk Assessments in the Home Ignition Zone/structural ignitability assessments. The planned treatments include developing defensible space around homes and implementing landscape scale fuel treatments. Forest stands will be thinned and brush fuels will be masticated where they pose a threat to homes and/or are within potential evacuation corridors. Biomass utilization of material would be used to reduce costs. Project had previously merged the Janesville, Milford, Lone Spring Projects.

Project Map: THOMPSON PEAK INITIATIVE (TPI)
Revised maps being created to reflect expanded project.



WUI Area: Doyle

Funding: Planning/Partial Funding

2022 Planning

Number of Acres:

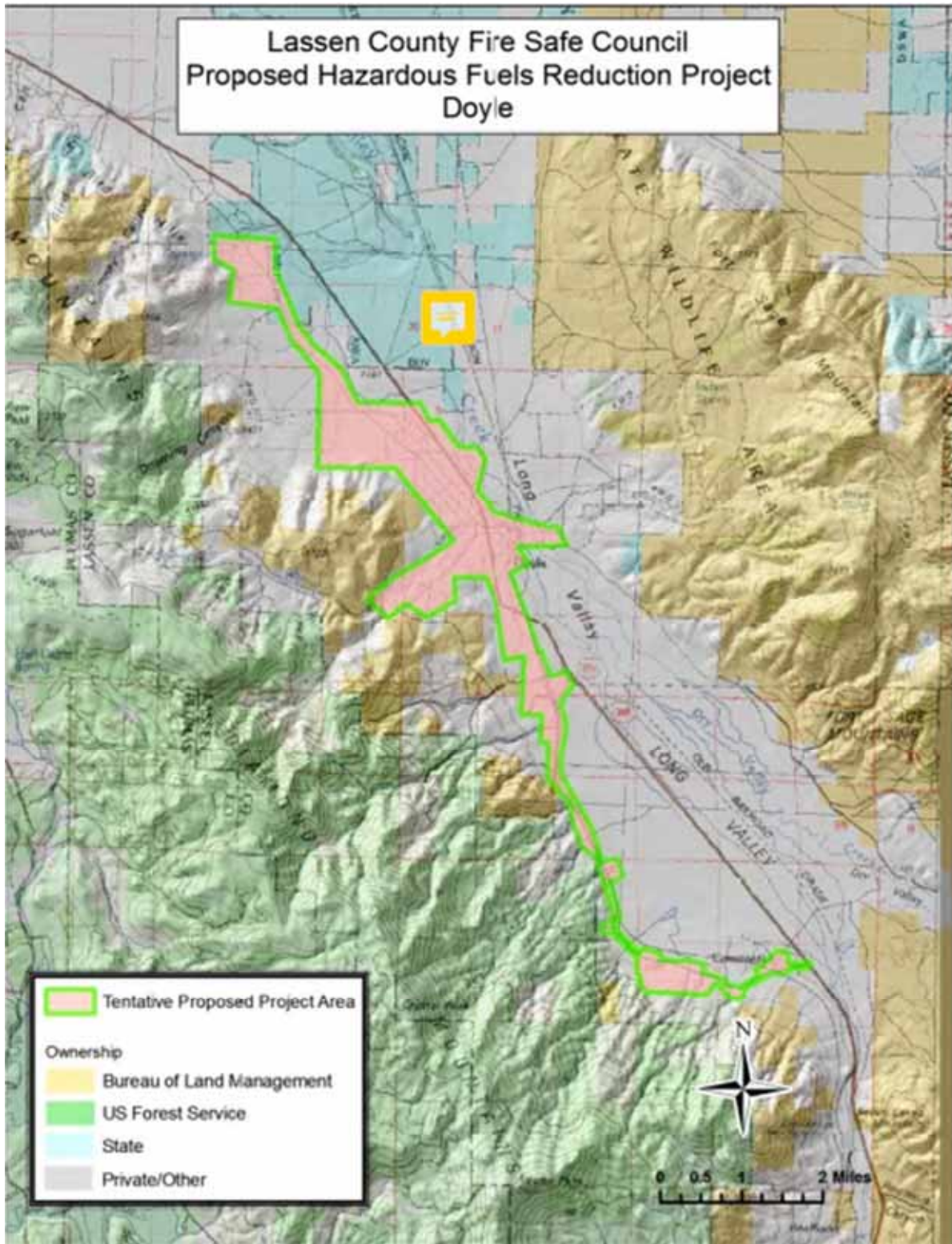
Agency or Agencies: LFSC, PNF, BLM

Project Name: **DOYLE FUEL TREATMENTS AND RISK ASSESSMENTS**

Project Coordinates: N40.0273 W120.1030

Summary of Project: Funding for Assessment & Certification of Doyle as Firewise Community through CFSC County Coordinator grant. LFSC, in conjunction with PNF and BLM, is in the initial planning stage of assisting the community of Doyle in gaining Firewise Communities USA status/certification and with a possible fuels treatment project that could include fuel breaks in sagebrush areas surrounding the community. Also under consideration could be private land forest thinning with cooperating landowners that are adjacent to PNF. Risk Assessments in the Home Ignition Zone/structural ignitability assessments would also be conducted with community residents. LFSC will be making its initial contacts with community members and local fire department and will be seeking funding opportunities for identified project work.

Project Map: DOYLE FUEL TREATMENTS AND RISK ASSESSMENTS



WUI Area: Westwood-Clear Creek

Funding: Funded

2022 Implementation

Number of Acres: 5699

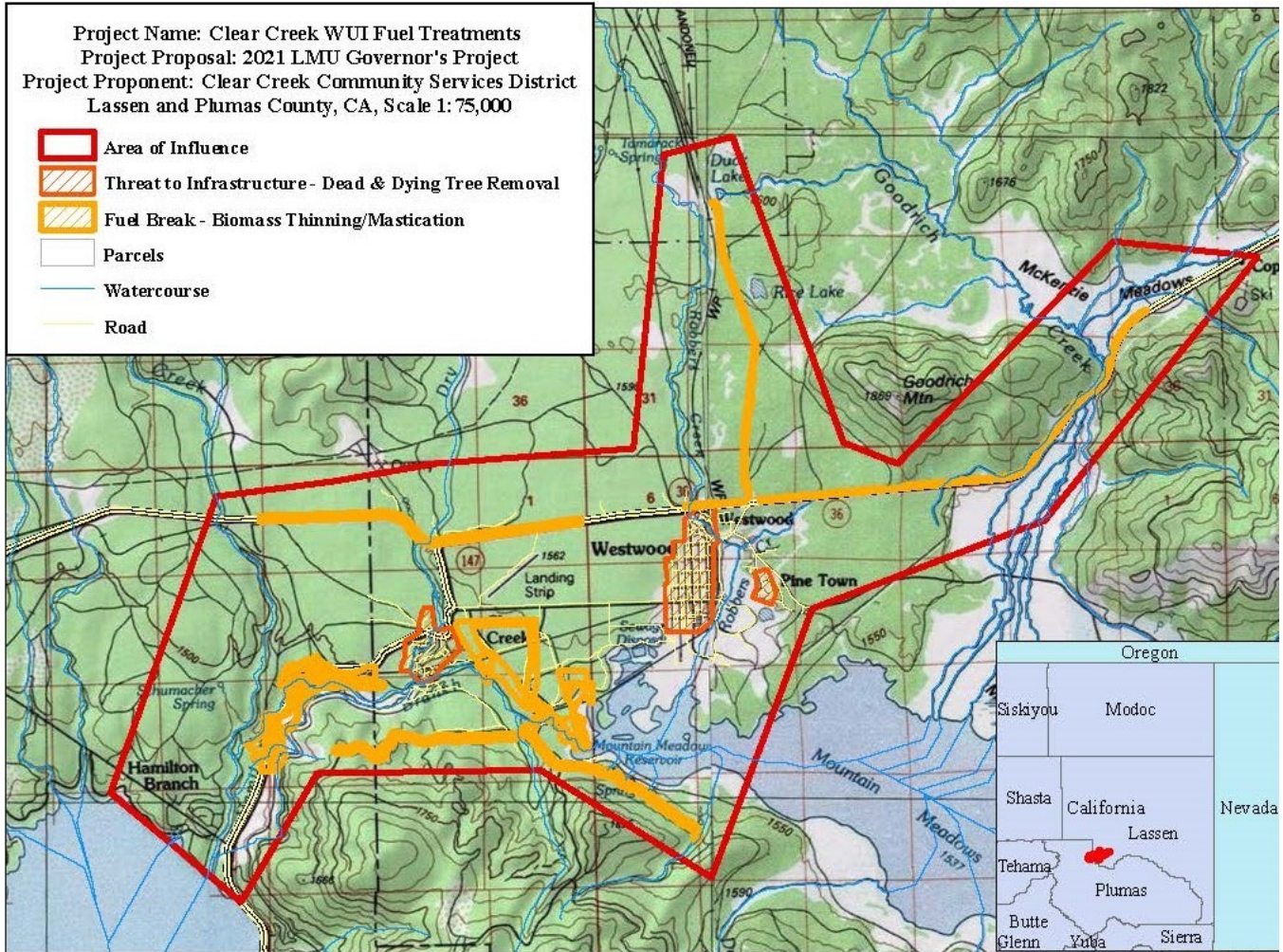
Agency or Agencies: LFSC, SPI, WM Beaty, CALFIRE, PG&E, Clear Creek & Westwood CSD

Project Name: **DYER MOUNTAIN INITIATIVE**

Project Coordinates: N40.29628 W121.05017

Summary of Project: LFSC has completed over 1,554 masticated acres, 2,012 acres of biomass for the project to date. Clear Creek treatments are mostly completed. Pinetown treatments are on-going. Partners include: Clear Creek & Westwood CSDs, CALFIRE, SPI, WM Beaty & Associates and PG&E. Brush fuels will be masticated where they pose a threat to homes and/or are within potential evacuation corridors. We will also perform additional Risk in the Home Ignition Zone/structure ignitability assessments with community residents, provide additional treatments around homes and construct additional fuel breaks. Additional treatments have been funded by CALFIRE to perform more mastication, thinning and community treatments that will restore the watershed and reduce hazardous fuel loads within and around the local communities. Additional landscape scale treatments are expected to be added within the project's area of influence.

Project Map: DYER MOUNTAIN INITIATIVE



WUI Area: Madeline

Funding: Planning/Not Funded

2022 Planning

Number of Acres: 8,718

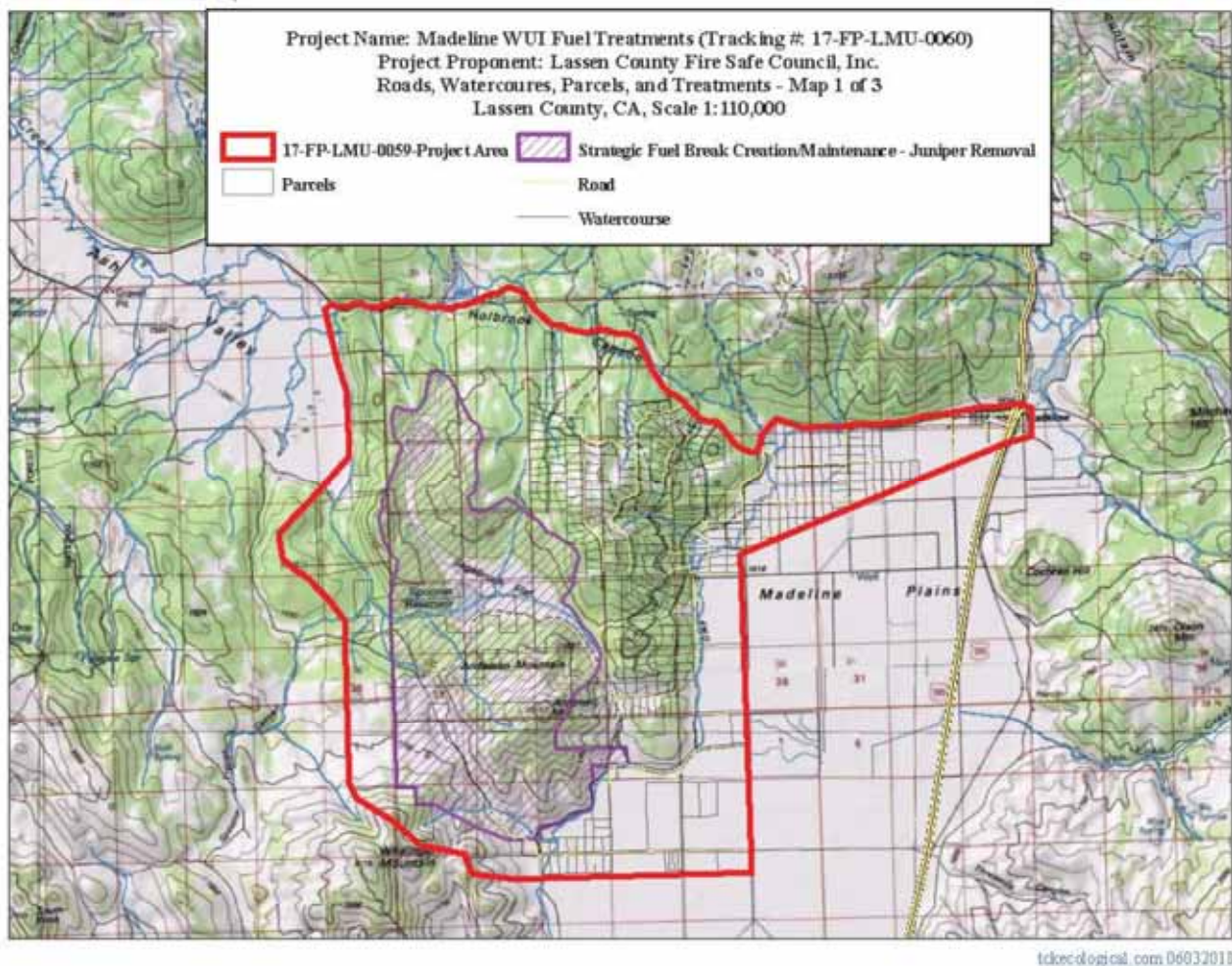
Agency or Agencies: LFSC, PRCD, CALFIRE, BLM-AFO

Project Name: **MADLINE**

Project Coordinates: N41.0514 W120.4567

Summary of Project: Project to include a Community Assessment, Firewise Community recognition, Risk Assessments in the Home Ignition Zone/Structural Ignitability Assessments, Fuel Treatments Around Structures and Landscape Scale Fuel Treatments. Project merges our previous Ash Valley IV and Spooner Reservoir projects. At present, there is no designated funding for, or agency charged with establishing the Firewise community

Project Map:



WUI Area: Little Valley

Funding: Partially Funded

2022 Implementation

Number of Acres: 100

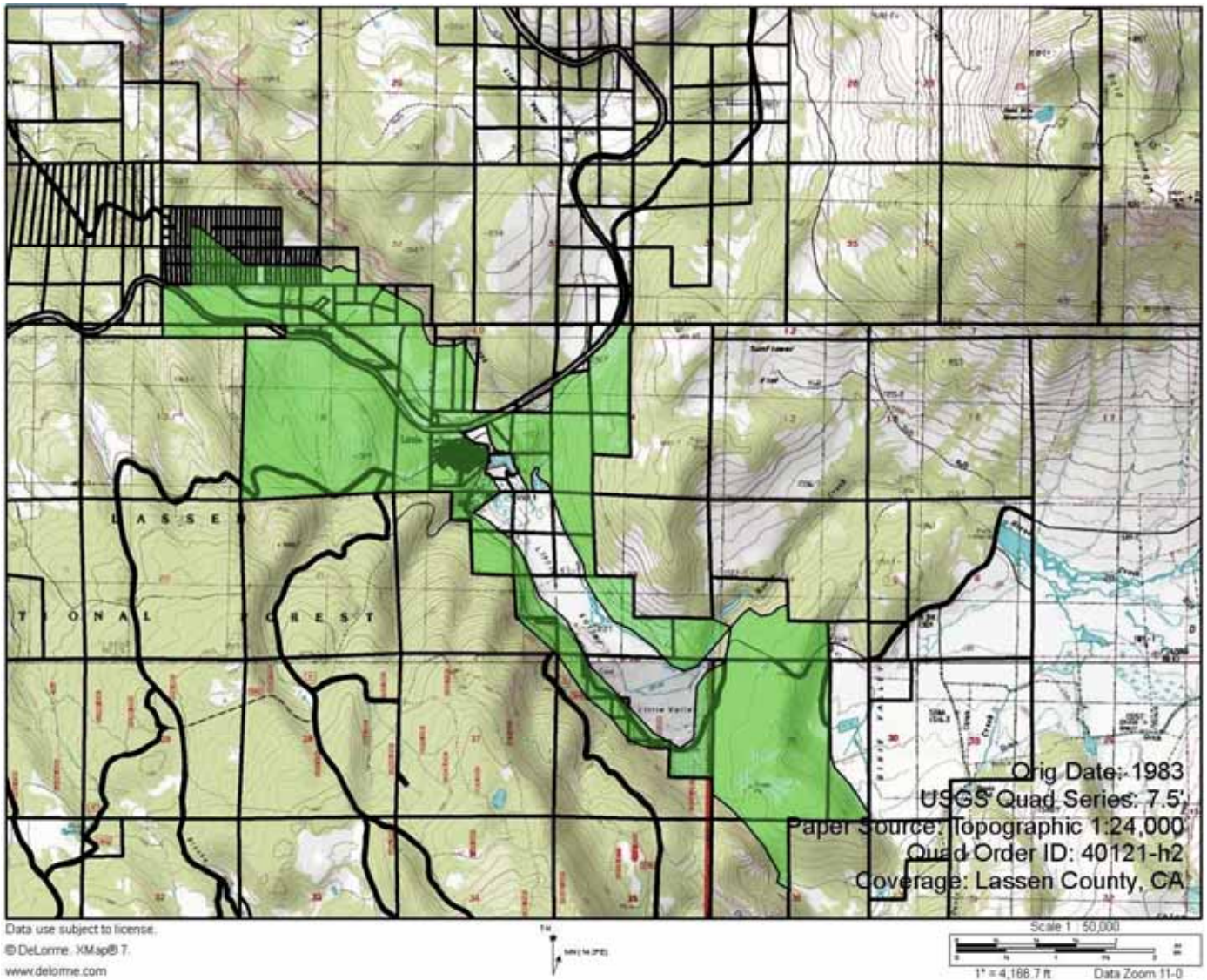
Agency or Agencies: LFSC, Cal Fire, PG&E, USFWS, Little Valley CSD

Project Name: **LITTLE VALLEY FOREST & MEADOW**

Restoration Project Project Coordinates: N40.8938 W121.1815

Summary of Project: LFSC has received partial funding for this project. We are seeking funds to complete the project. Primary work will be the removal of invasive western juniper and forest thinning in overstocked pine stands. The project will also assist community homeowners with treatments within the Little Valley residential neighborhood and protect community infrastructure (PG&E electric lines). Risk in the Home Ignition Zone/structure ignitability assessments within and around the community will also be part of the project. Project may also include prescribed fire follow-up/maintenance of previously completed treatments. This project is currently dormant and will need follow-up in 2023 to assess viability of project. Ongoing efforts to secure equipment and funding to support the local volunteer fire department.

Project Map: LITTLE VALLEY FOREST & MEADOW



WUI Area: Susanville, Janesville, Milford, Doyle

Funding: Not awarded

2022 Implementation

Number of Acres: 5,000

Agency or Agencies: LFSC, HLVRCD, WM Beaty

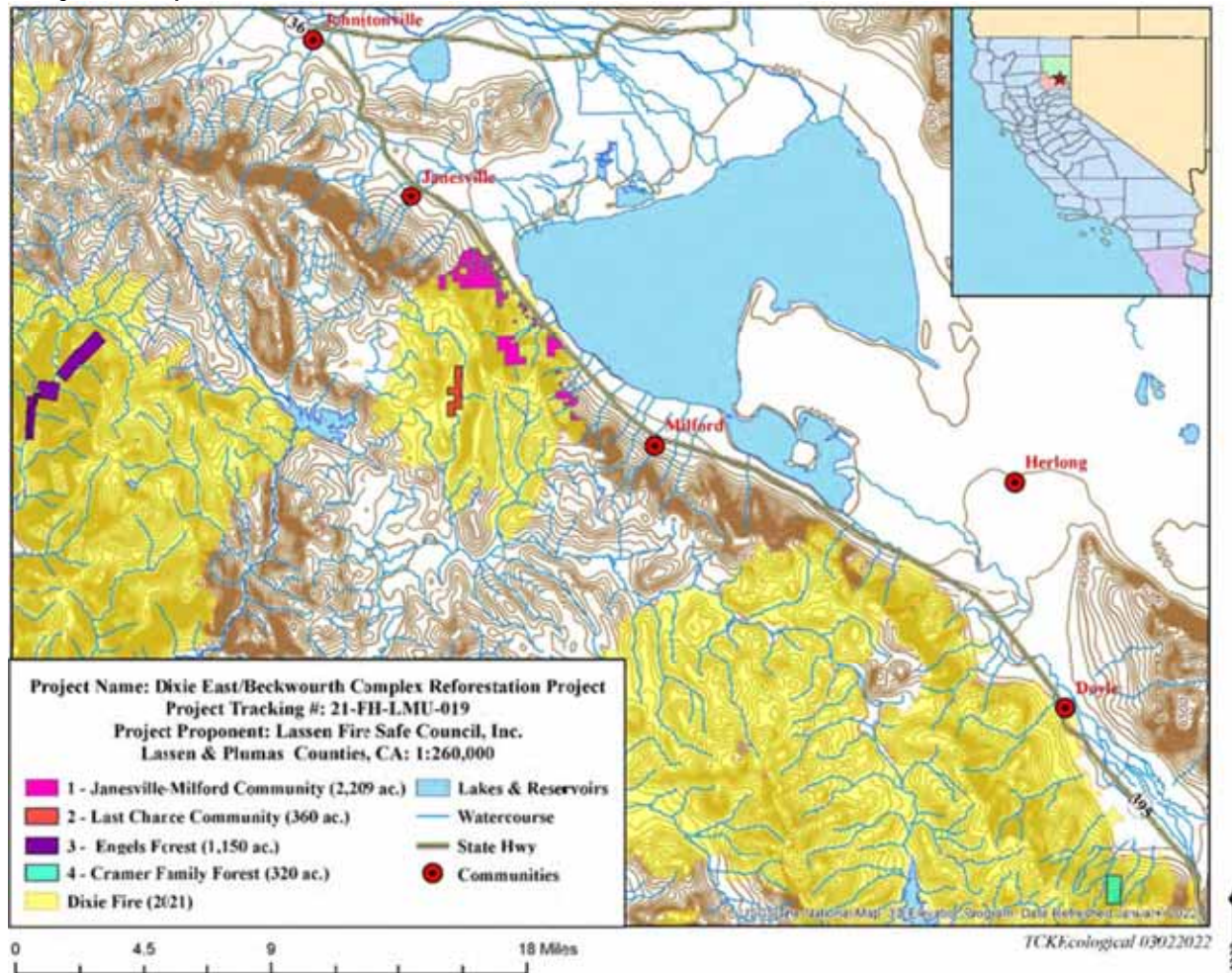
Project Name: **Dixie East & Beckwourth Fires Reforestation**

Project Coordinates: 40.143 120.542

Summary of Project: LFSC had applied for CAL FIRE Reforestation funds in the eastern footprint of the Dixie &

Beckwourth Fires. In May, LFSC was notified it was not awarded the grant to fund this project. Activities include the biomass removal and mastication of burned trees, emergent brush treatments and tree planting, The Project Area encompasses approximately 300,000 acres but the request to date only covers 5,000 acres of private lands. May resubmit in 2023.

Project Map:



WUI Area: Day/Lookout/Big Valley
2022 Implementation

Funding: Closed & completed
Number of Acres: 13,400

Agency or Agencies: LFSC, SPI, WM Beaty, CAL FIRE

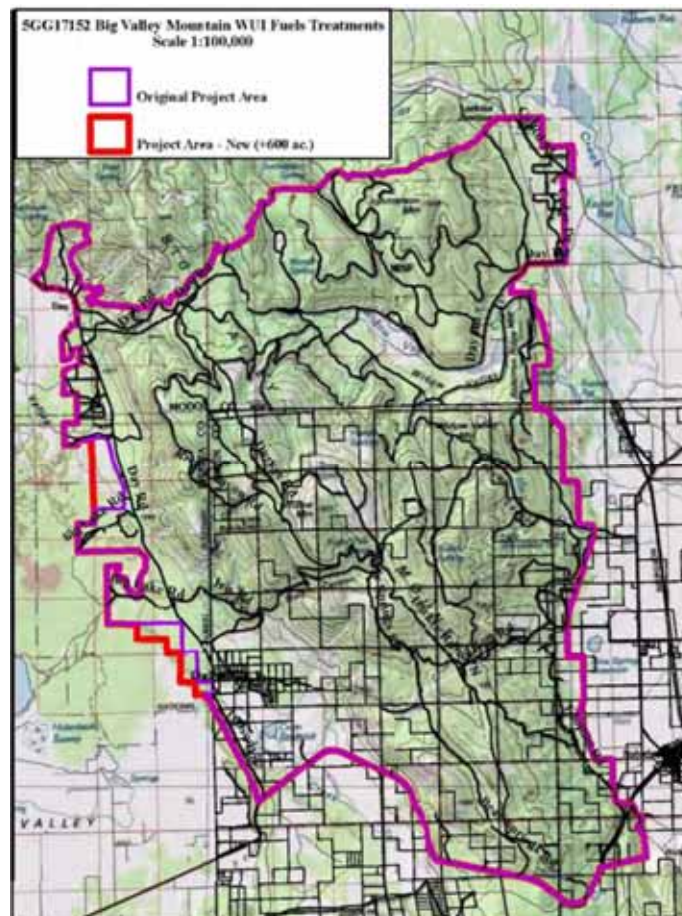
Project Name: Big Valley Mountain WUI Fuel Treatments

Project Coordinates: -121.232 41.067

Summary of Project: Project completed Summer, 2022. This Cal Fire funded grant project for \$7,922,828.00 on

Big Valley Mountain area covered 13,400 acres of hazardous fuel reduction and removal fuel treatments, including dead and dying trees, on private land within the SRA, primarily within the Very High and High Hazard Fire Severity Zones. The project will reduce wildland fire risk for 491 habitable structures within the 51,826-acre Project Area/Area of Influence. The vast majority of the project area lies within a Wildland Urban Interface Zone (WUI). The project merges and implements 3 previous CWPP projects: Day Lassen Bench, Lookout and Big Valley Mountain Fuelbreak.

Project Map:



WUI Area: Susanville

Funding: Fully Funded

2022 Implementation

Number of Acres: 7000

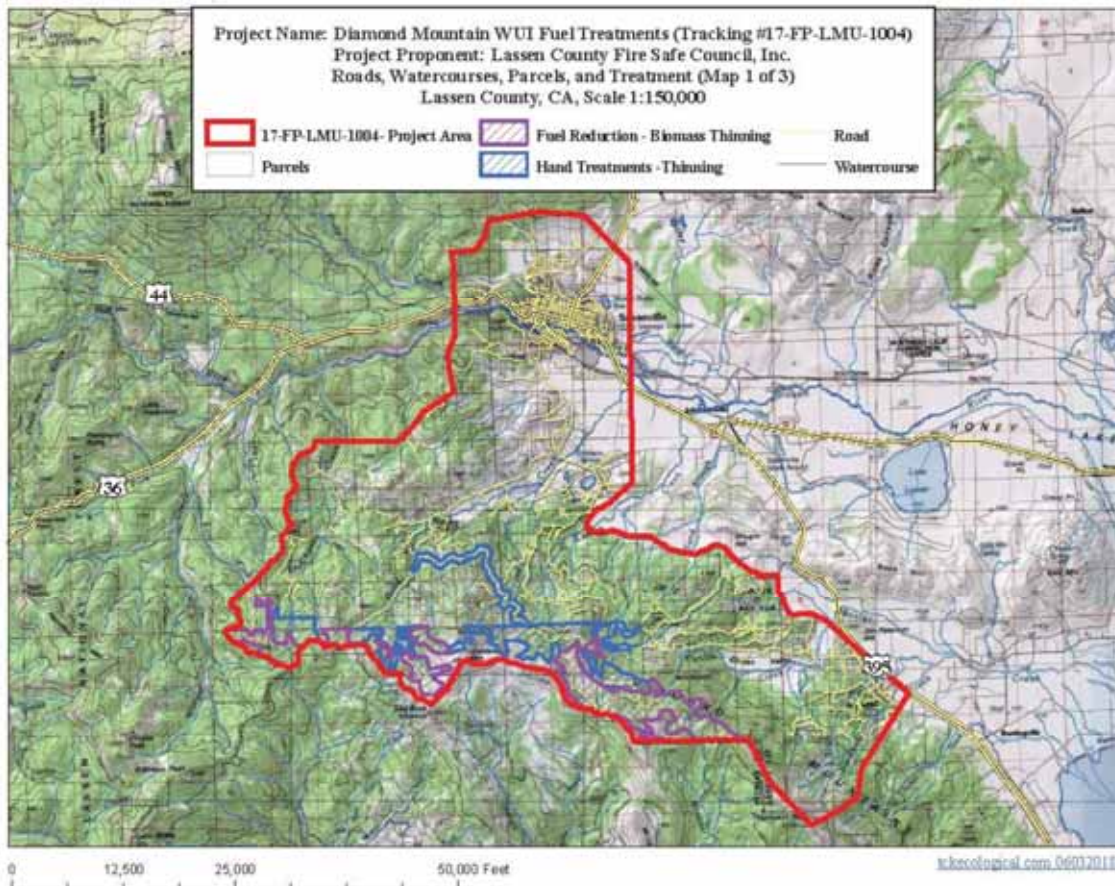
Agency or Agencies: LFSC, CAL FIRE, SNC, HLVRCD, USFS, WM Beaty, BLM

Project Name: **DIAMOND MOUNTAIN**

Project Coordinates: N40.3214 W120.6690

Summary of Project: LFSC will continue planning for fire line cleanup after Sheep Fire including mastication, hand treatments, & prescribed burn on an SNC grant; a collaborative fuels treatment project along and below Diamond Mountain south of Susanville. Work will tie in to work previously completed by LFSC, BLM and HLVRCD. Update- All mastication and hand work are completed. 448 acres of prescribed burning is left, tentatively to be completed by 2024. The Cal Fire and SNC grants will be closed out when prescribed burning is completed. LNF will be the lead for USFS land and LFSC will be the lead for private land within the project area. Major project funding through Cal Fire and SNC, with additional possible funding from CFSC, and USFS.

Project Map:



WUI Area: Spaulding

Funding: Complete at present

2022 Planning

Number of Acres: 40

Agency or Agencies: LFSC

Project Name: **SPAULDING FUEL REDUCTION PLANNING AND
RISK ASSESSMENTS**

Project Coordinates: N40.6573 W120.7759

Summary of Project: Update: Project is currently dormant until 2024. Risk assessment for Spaulding was completed in 2021 and there were "green waste" days completed in both 2020 and 2021. Spaulding does not need to have another risk assessment performed until 2026 as the current assessment is good for 5 years. They will however, have to do a new Action Plan in 2024. LFSC will be working with Spaulding Firewise Community leaders and Community Education contractor to ensure a supported and robust Firewise community. Work will complement previously completed work by LNF.

Project Map: SPAULDING FUEL REDUCTION PLANNING AND RISK ASSESSMENTS



WUI Area: Westwood

Funding: Award of approx. \$5M Grant Pending

2022 Implementation

Number of Acres: 5,000

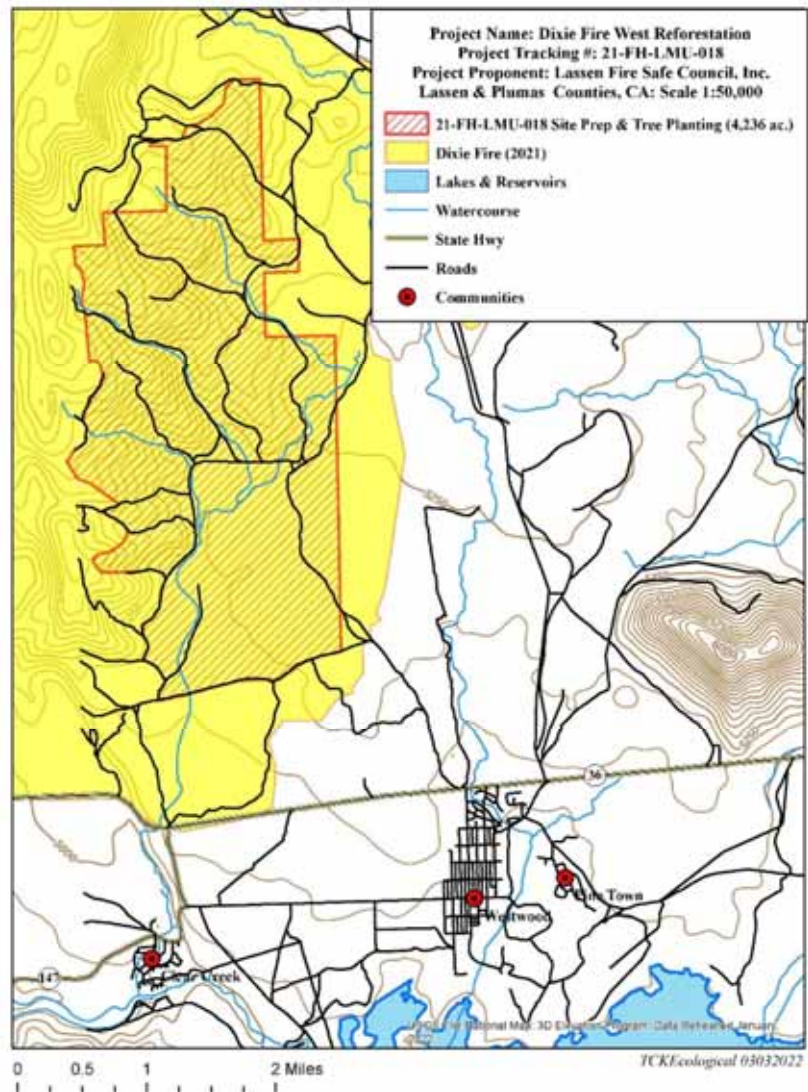
Agency or Agencies: LFSC, HLVRCD, WM Beaty

Project Name: **DIXIE WEST REFORESTATION**

Project Coordinates: 40.3542 120.0430

Summary of Project: LFSC has applied CAL FIRE Reforestation funds in the western footprint of the Dixie Fire and grant award is pending Cal Fire audits. Activities include the biomass removal and mastication of burned trees, emergent brush treatments and tree planting, The Project Area encompasses approximately 800,000 acres but the request to date only covers 5,000 acres of private lands.

Project Map:



WUI Area: Ash Valley

Funding: Partially Funded

2022 Implementation

Number of Acres: 500

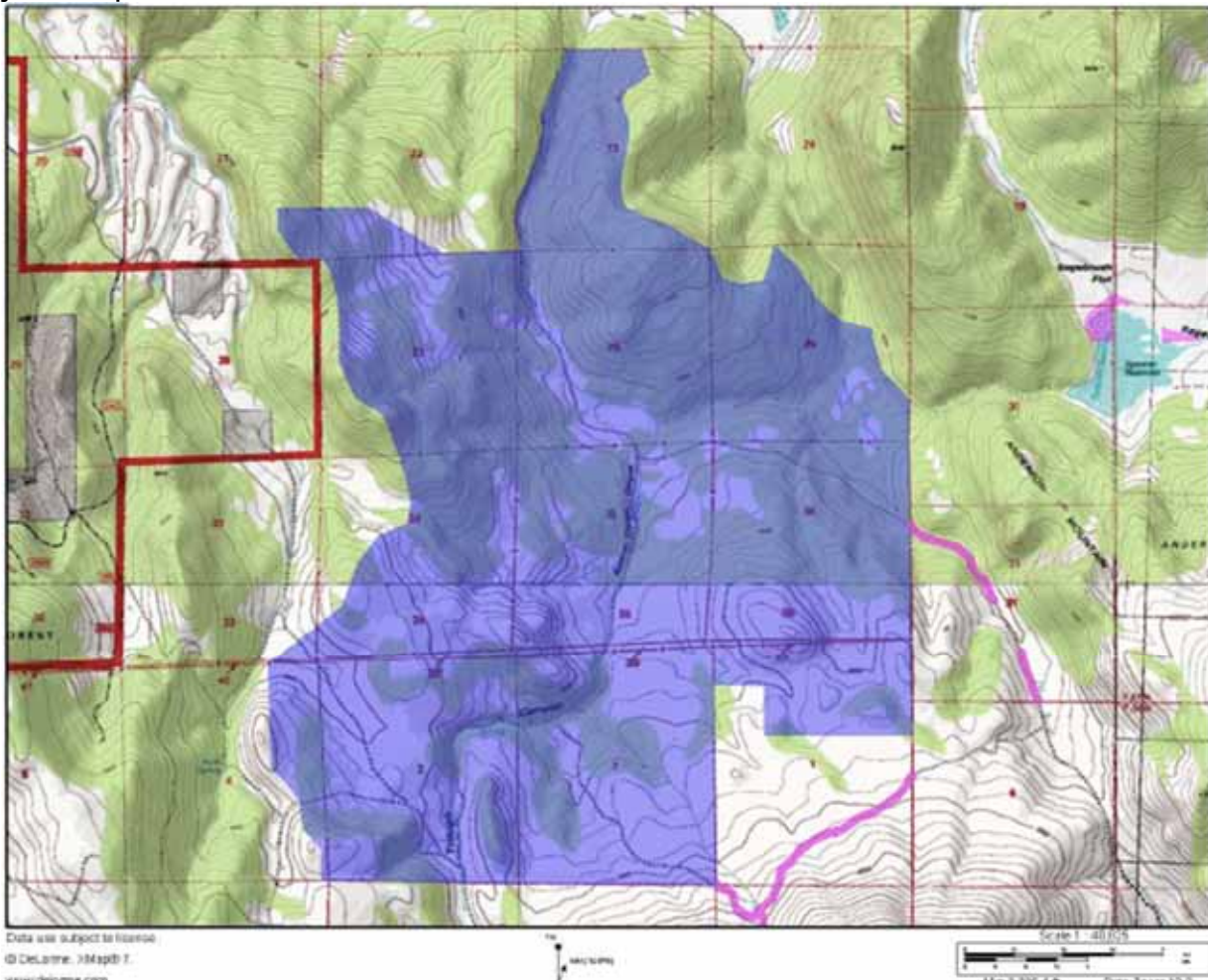
Agency or Agencies: LFSC, BLM, CALFIRE

Project Name: **ASH VALLEY III WATERSHED RESTORATION PROJECT**

Project Coordinates: N41.0047 W120.6750

Summary of Project: CSSRI has been implementing this watershed restoration project on private and BLM managed land since BLM completed NEPA in 2011. Partial funding has been obtained from Lassen RAC, NRCS, SNC, DWR, USFWS and private landowner contributions. Project connects the BLM South Ash Valley, CSSRI Ash Valley I, II & IV and the CSSRI South Knob projects. Work consists of the removal of invasive juniper through biomass utilization in an effort to reduce hazardous fuel loads and restore the watershed and wildlife habitat. The balance of the mechanical treatments await completion. Status unknown.

Project Map:



WUI Area: McBride Springs DFPZ

Funding: Planning/Not Funded

2022 Planning

Number of Acres: 743

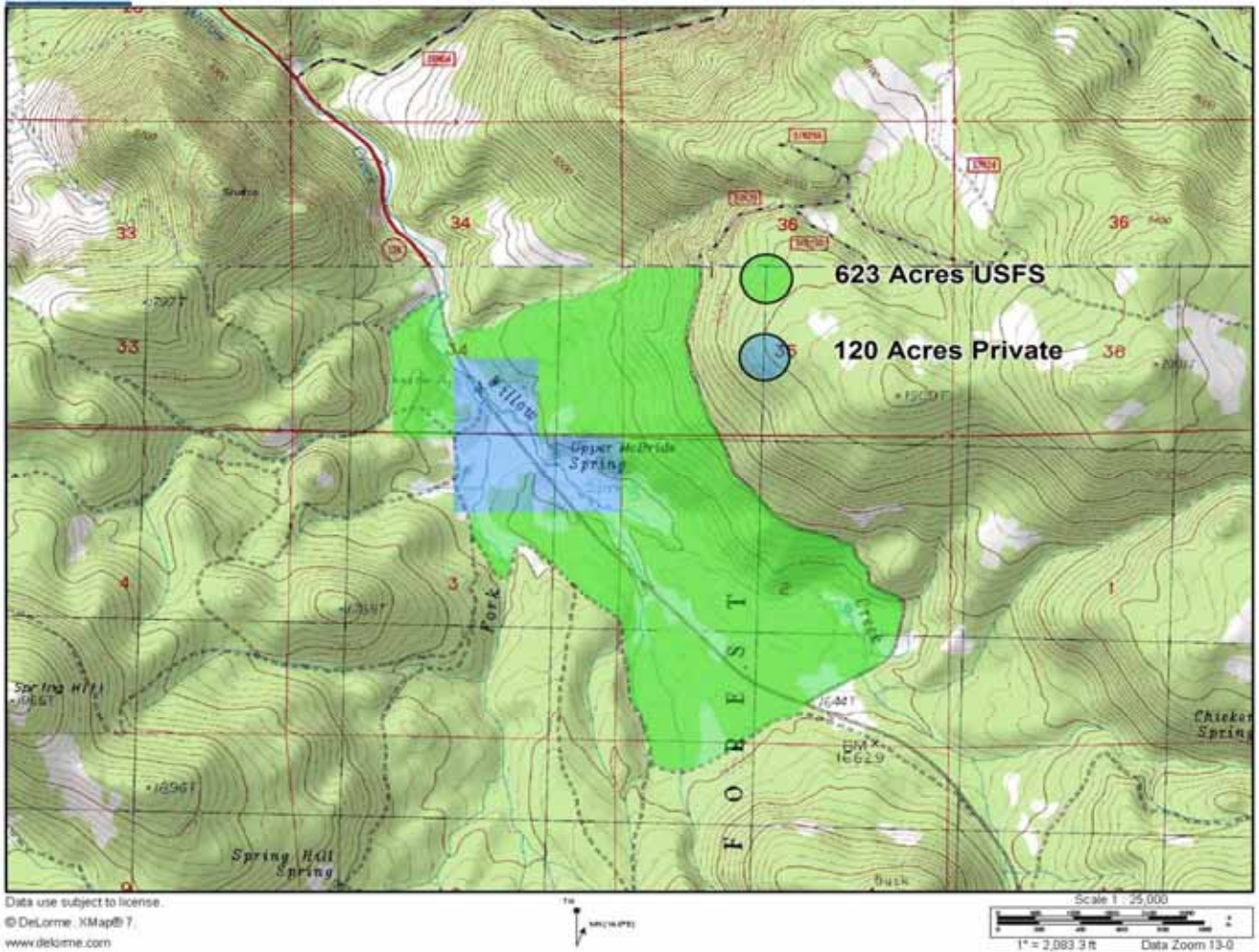
Agency or Agencies: LFSC, MDF

Project Name: **McBRIDE SPRINGS UPLAND RESTORATION**

Project Coordinates: N40.9919 W120.7978

Summary of Project: Mule Deer Foundation. CSSRI, through its partners LFSC & Pit Resource Conservation District (Pit RCD), and in cooperation with the USFS, will be making applications with various agencies to fund treatments on private and USFS lands. NEPA and CEQA clearance has been underway for some time. In 2011 stream channel restoration work was completed. Planning work has been funded by SNC and CSSRI. Project would restore an important watershed along the Highway 139 corridor. Invasive juniper would be removed through biomass utilization in an effort to reduce hazardous fuel loads and restore the watershed and wildlife habitat. Eastside pine thinning could also occur. Project would be implemented by the Cooperative Sagebrush Steppe Restoration Initiative partnership, with the Pit Resource Conservation District (Pit RCD) as the lead, and funding partners. LFSC has checked with Pit RCD and they are unaware of this project. Consideration to drop from rankings.

Project Map: McBRIDE SPRINGS UPLAND RESTORATION



WUI Area: Susanville

Funding: Partially Funded

2021 Implementation

Number of Acres: 40,000

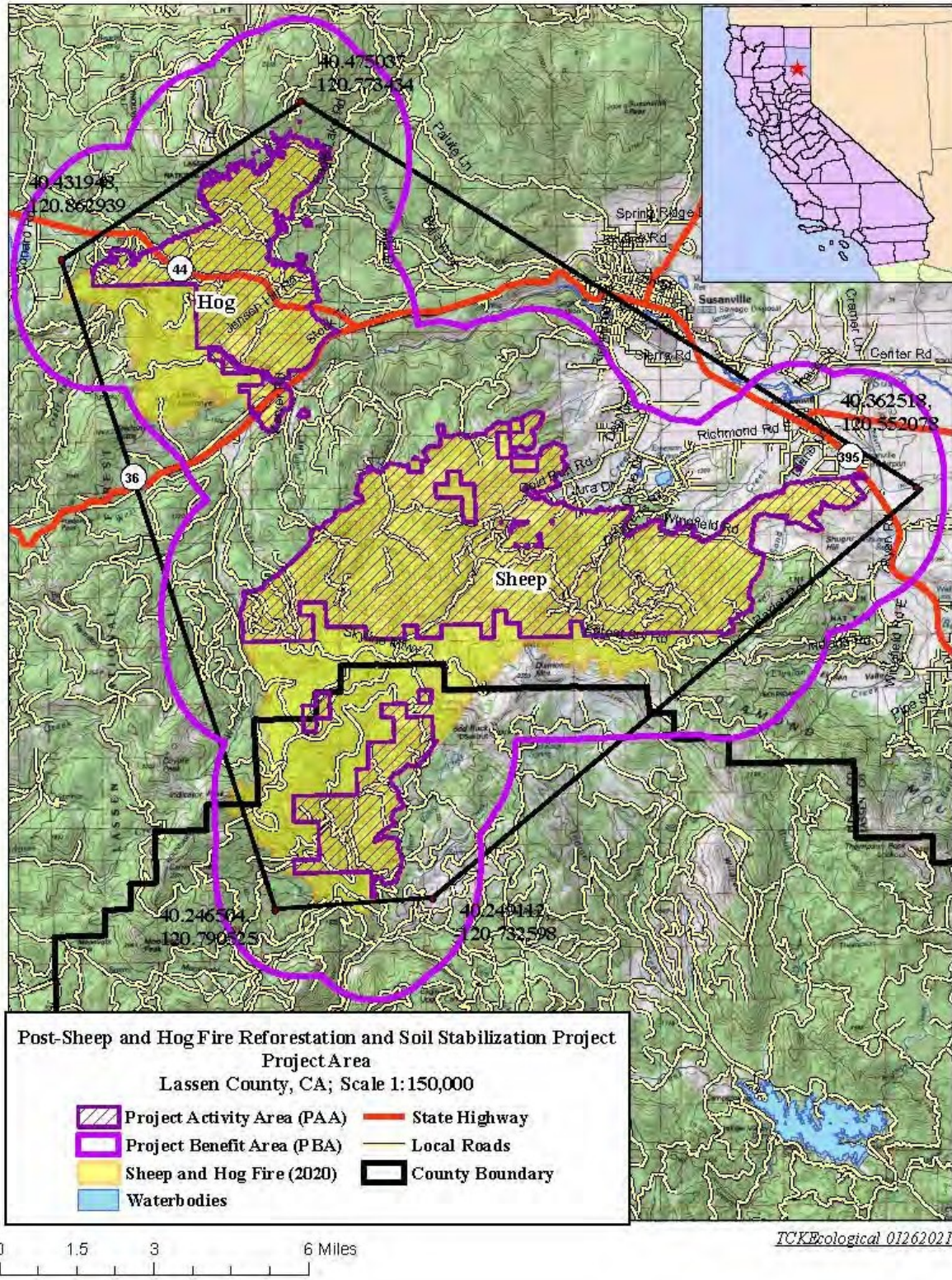
Agency or Agencies: LFSC, HLVRCD, WM Beaty, SPI, Cal Fire, Cal-OES, FEMA

Project Name: **HOG & SHEEP FIRES REFORESTATION**

Project Coordinates: 40.36252 120.55208

Summary of Project: LFSC has been awarded FEMA and Cal Fire California Climate Investments Reforestation funds in the footprints of the Hog & Sheep Fires. The Project Area encompasses approximately 40,000 acres but the request to date only covers private lands. CCI grant approx. \$5M; FEMA grant- \$80,000 landowner sign-ups. Conducting phase I- outreach to landowners and sign-up Fall 2022, anticipated sign-up completion November 30, 2022.

Project Map: HOG & SHEEP FIRES REFORESTATION



WUI Area: Grasshopper DFPZ

Funding: Planning/Not Funded 2022

Planning

Number of Acres: 2131

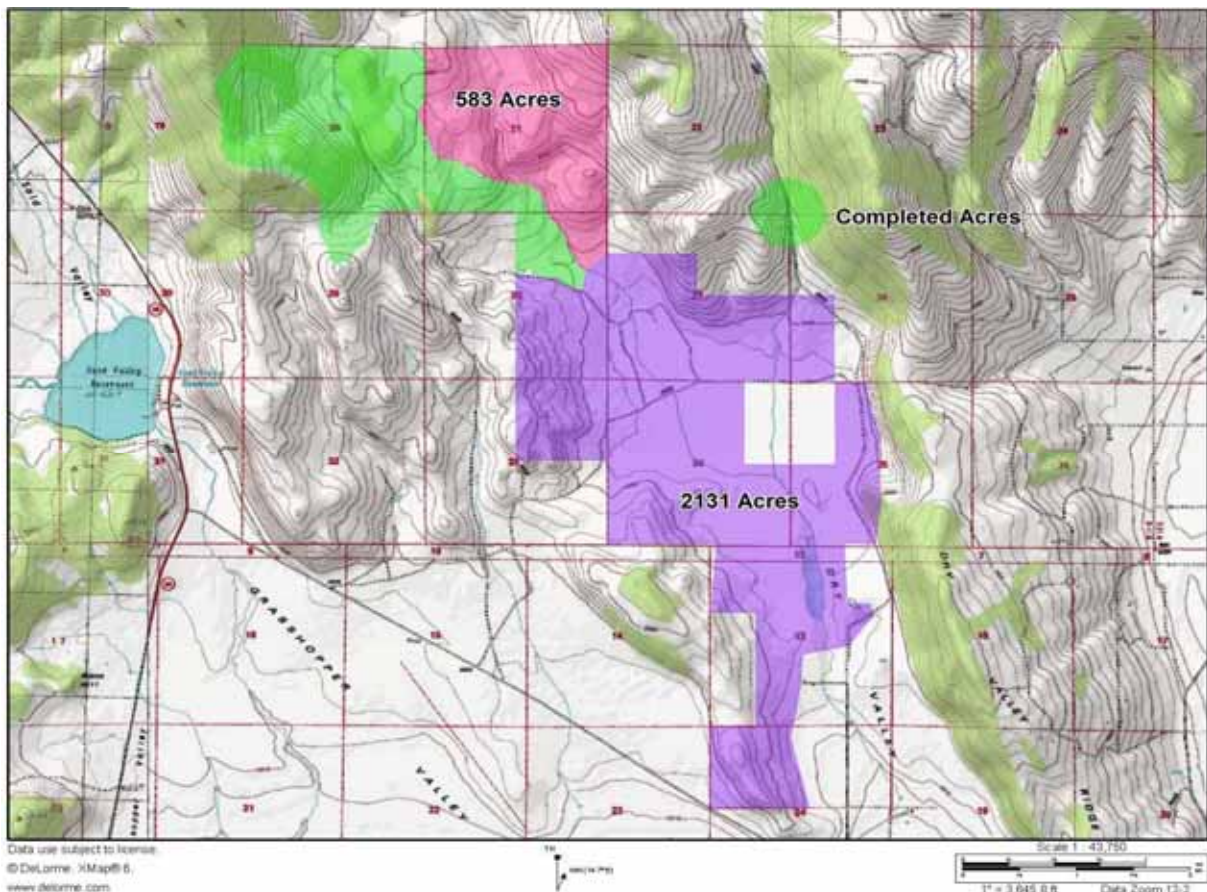
Agency or Agencies: CSSRI

Project Name: **McCLELLAND WATERSHED/WILDLIFE HABITAT RESTORATION PROJECT**

Project Coordinates: N40.9199 W120.7020

Summary of Project: CSSRI, through its partners **Pit Resource Conservation District (Pit RCD)** & LFSC may make applications with various agencies to fund treatments on McClelland Ranch private lands in North Grasshopper Valley. The 583 acre portion of the project identified in the map below was completed in 2012. Project connects with the CSSRI South Knob projects. Work consists of the removal of invasive juniper through biomass utilization in an effort to reduce hazardous fuel loads and restore the watershed and wildlife habitat. LFSC has checked with Pit RCD and they are unaware of this project. Consideration to drop from rankings.

Project Map:



WUI Area: Westwood

Funding: Planning/Not Funded

2022 Implementation

Number of Acres: 4835

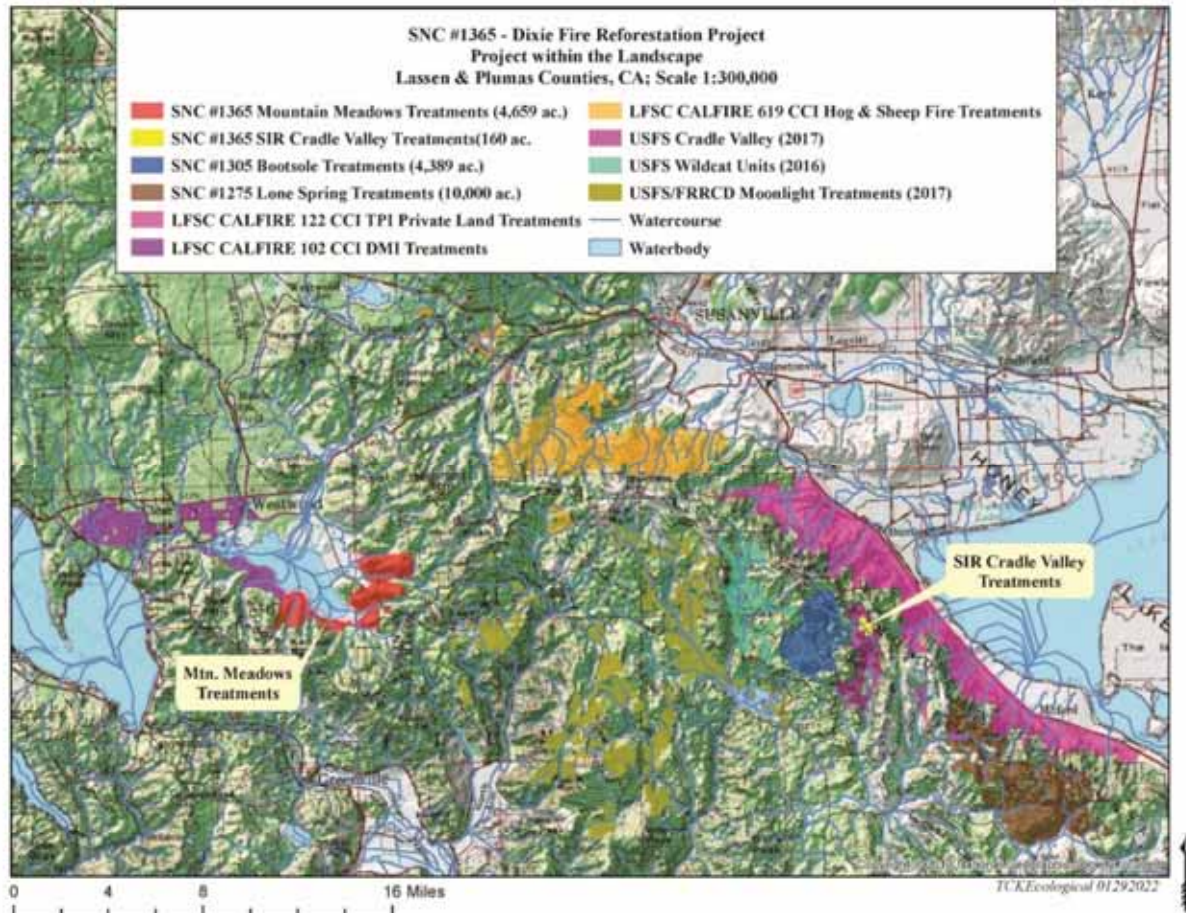
Agency or Agencies: LFSC, HLVRCD, WM Beaty, Collins, SNC

Project Name: **MOUNTAIN MEADOWS & SIR REFORESTATION**

Project Coordinates: 40.2227 120.8993

Summary of Project: LFSC had applied to Sierra Nevada Conservancy for this grant and it was not awarded as submitted. Reforestation funds in the western footprint of the Dixie Fire. Activities include the biomass removal and mastication of burned trees, emergent brush treatments and tree planting, The Project Area encompasses approximately 800,000 acres but the request to date for the original application only covers 5,000 acres of private and Susanville Indian Rancheria/Tribal lands. In response to SNC feedback, LFSC will be revising the documents to exclude 164 acres on SIR property, which will be done under another grant project. LFSC will work with SNC to discuss funding this grant as revised in 2023.

Project Map:



WUI Area: Adin

Funding: Planning/Not Funded

2022 Implementation

Number of Acres: 400

Agency or Agencies: LFSC, BLM-AFO

Project Name: **LETTER BOX**

Project Coordinates: 0676147 4549573

Summary of Project: Commercial thinning of overstocked stands to achieve the desired stocking level (approximate BA of 80sq. ft.) to increase health and vigor. Commercial and non-commercial sanitation harvest of trees to control insects and disease.

Project Map:

