



LASSEN FIRE SAFE COUNCIL

LASSEN COUNTY
DEFENSIBLE SPACE
PROGRAM

“The Lassen County Defensible Space Assistance Program is part of California Climate Investments, a statewide initiative that puts billions of Cap-and-Trade dollars to work reducing greenhouse gas emissions, strengthening the economy and improving public health and the environment — particularly in disadvantaged communities.”



BACKGROUND

Lassen Fire Safe Council (LFSC) submitted the application for the 22 CALFIRE Defensible Space Program through the California Fire Safe Council.



June 2023

Sep. 2023

Oct. 2023

Nov. 2023

Apr. 2024

LFSC began property assessments which has been ongoing.

Began treatment in Pinetown.

LFSC was awarded the grant and began accepting landowner signups.

LFSC posted a Request for Proposals (RFP) which led to awarding the contract to High Sierra Fire Inc.



PROGRAM OUTLINE AND ELIGIBILITY

- This program will provide assistance to help vulnerable, disabled, or low-income communities within Lassen County create good Defensible Space. This no-cost program will provide homeowners with a property assessment and treatment of eligible properties.
- Eligible properties are those that are located within low-income communities, disadvantaged communities, or are owned by a senior citizen, disabled person, or veteran within a High or Very High Severity Rating area.

WHAT IS DEFENSIBLE SPACE?

“Broken up into three zones, defensible space is the buffer between your structure and the surrounding area.

Adequate defensible space acts as a barrier to slow or halt the progress of fire that would otherwise engulf your property. It also helps ensure the safety of firefighters defending your home. Defensible space is the first line of defense for your home against wildfire.”





ZONE 0 “HARDSCAPE” 0’-5’

- The first five feet from your home is the most important.
 - Keeping the area closest to buildings, structures, and decks clear will prevent embers from igniting materials that can spread the fire to your home.
- Clear dead weeds, grass, and debris; check roofs, gutters, and outdoor areas
- Keep branches trimmed 10 feet away from chimneys and stovepipes
- Minimize combustible items like furniture and planters on decks
- Move firewood and lumber to Zone 2 for safety
- Replace combustible fencing and gates with fire-resistant materials
- Shift garbage and recycling containers to a safer area outside this zone
- Relocate boats, RVs, and vehicles away from this zone to reduce fire risks

00:00:00

PREPARED



ZONE 1 “LEAN AND CLEAN” 5’-30’

- Regularly clear dead or dry vegetation and create space between trees.
 - Removing dead plants and creating space between trees and shrubs creates a buffer for your property and reduces potential fuel for fire.
- Remove all dead plants, grass, and weeds.
- Remove dead or dry leaves and pine needles.
- Trim trees regularly to keep branches a minimum of 10 feet from other trees.
- Create a separation between trees, shrubs, and items that could catch fire, such as patio furniture, wood piles, swing sets, etc.



ZONE 2 “LEAN AND CLEAN” 30’-100’

- Continue reducing potential fuel within 100 feet or the property line.
 - 100 feet of defensible space is required by law. Public Resources Code (PRC) 4291
- Cut or mow annual grass down to a maximum height of four inches.
- Create horizontal and vertical space between shrubs and trees.
- Remove fallen leaves, needles, twigs, bark, cones, and small branches. However, they may be permitted to a depth of three inches.
- Keep 10 feet of clearance around exposed wood piles, down to bare mineral soil, in all directions.
- Clear areas around outbuildings and propane tanks. Keep 10 feet of clearance to bare mineral soil and no flammable vegetation for an additional 10 feet around their exterior.



BEFORE AND AFTER

WESTWOOD



BEFORE AND AFTER

WESTWOOD



BEFORE AND AFTER

WESTWOOD



BEFORE AND AFTER

PINETOWN



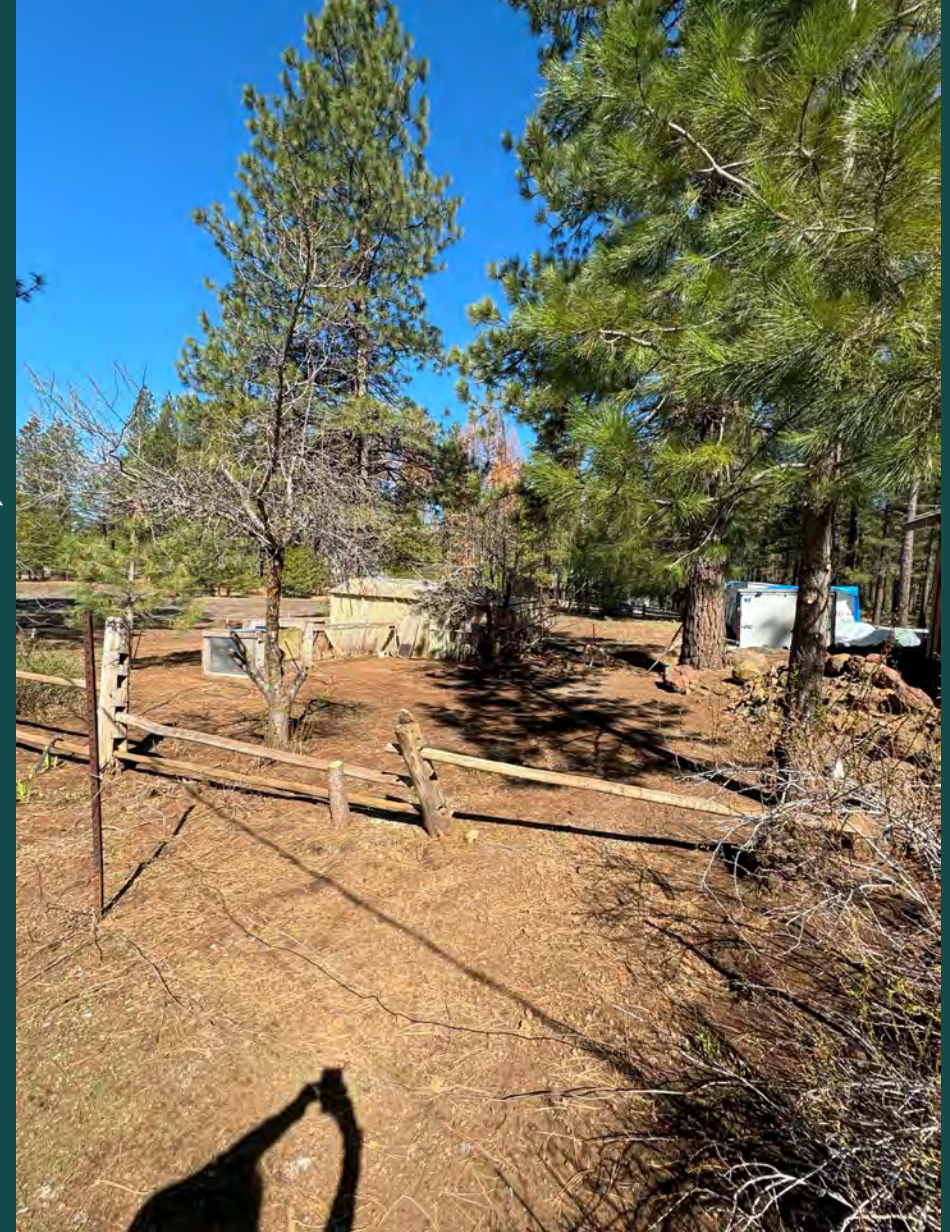
BEFORE AND AFTER

PINETOWN





BEFORE AND AFTER
PINETOWN





BEFORE AND AFTER

CLEAR CREEK

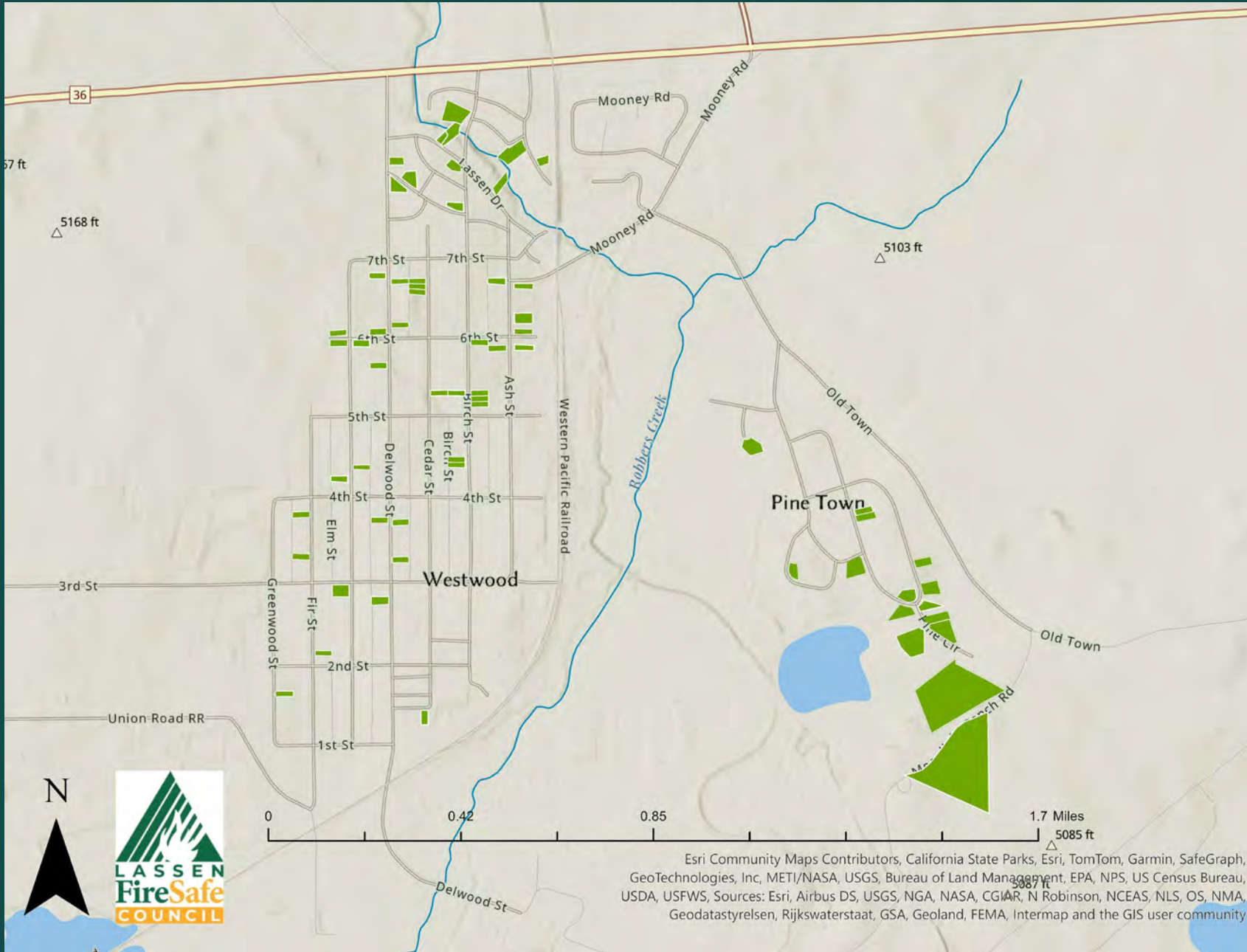


TREATMENT PICTURES IN WESTWOOD AND CLEAR CREEK



AS OF 5/14/2024 THERE HAVE BEEN 67 PROPERTIES
TREATED IN WESTWOOD, PINETOWN, AND CLEAR CREEK





OF THE 67 PROPERTIES TREATED, 62 OF THEM HAVE TAKEN PLACE IN THE WESTWOOD PINETOWN AREA

Esri Community Maps Contributors, California State Parks, Esri, TomTom, Garmin, SafeGraph, GeoTechnologies, Inc, METI/NASA, USGS, Bureau of Land Management, EPA, NPS, US Census Bureau, USDA, USFWS, Sources: Esri, Airbus DS, USGS, NGA, NASA, CGIAR, N Robinson, NCEAS, NLS, OS, NMA, Geodatastyrelsen, Rijkswaterstaat, GSA, Geoland, FEMA, Intermap and the GIS user community

HOW TO APPLY

- www/lassenfiresafecouncil.org
 - Drop down – Landowner sign-up
 - Defensible Space Program Sign-up
- Call us at 530-250-4449 or 530-250-5627
- Stop by at 1825 Main St. for in person sign-ups
- Or email hailey@lassenfiresafecouncil.org



THANK YOU FOR
YOUR TIME,
ANY QUESTIONS?

