

Lassen Fire Safe Council Thompson Peak Initiative

Grant #5GG19122 Thompson Peak WUI Fuel Treatments

General Meeting 4/17/2024



Funding for this project provided by the California Department of Forestry and Fire Protection as part of the California Climate Investments Program.

Thompson Peak WUI Fuel Treatments is part of California Climate Investments, a statewide program that puts billions of Cap-and-Trade dollars to work reducing GHG emissions, strengthening the economy, and improving public health and the environment— particularly in disadvantaged communities. The Cap-and-Trade program also creates a financial incentive for industries to invest in clean technologies and develop innovative ways to reduce pollution. California Climate Investments projects include affordable housing, renewable energy, public transportation, zero-emission vehicles, environmental restoration, more sustainable agriculture, recycling, and much more. At least 35 percent of these investments are located within and benefiting residents of disadvantaged communities, low-income communities, and low-income households across California. For more information, visit the California Climate Investments website at: www.caclimateinvestments.ca.gov.”



PROJECT BACKGROUND

- Thompson Peak Initiative formed June 2019.
- 2019 TPI Agency Partners



Petition in Support of Forest Health/Fuel Reduction Efforts of the Thompson Peak Initiative

Why?	Forest health has declined & fire danger has risen to dangerous levels along the South Side of the Honey Lake Valley
Action Petitioned for:	We, the undersigned concerned citizens, urge CAL FIRE to allocate CCI/Fire Prevention or Forest Health funds to Lassen County Fire Safe Council's Thompson Peak Initiative for fuel reduction and forest health treatments on private lands and on the Plumas National Forest. These treatments would greatly reduce the risk of catastrophic fire to our community and its citizens.

PLEASE RETURN PETITIONS TO: Phil Good PHONE NUMBER: 530-253-3724 EMAIL ADDRESS philgoodart1947@gmail.com

Printed Name	Signature	Email Address	Date	Phone Number	Property Owner? X	Interested in Treatments? X
This area is redacted with a solid blue block						

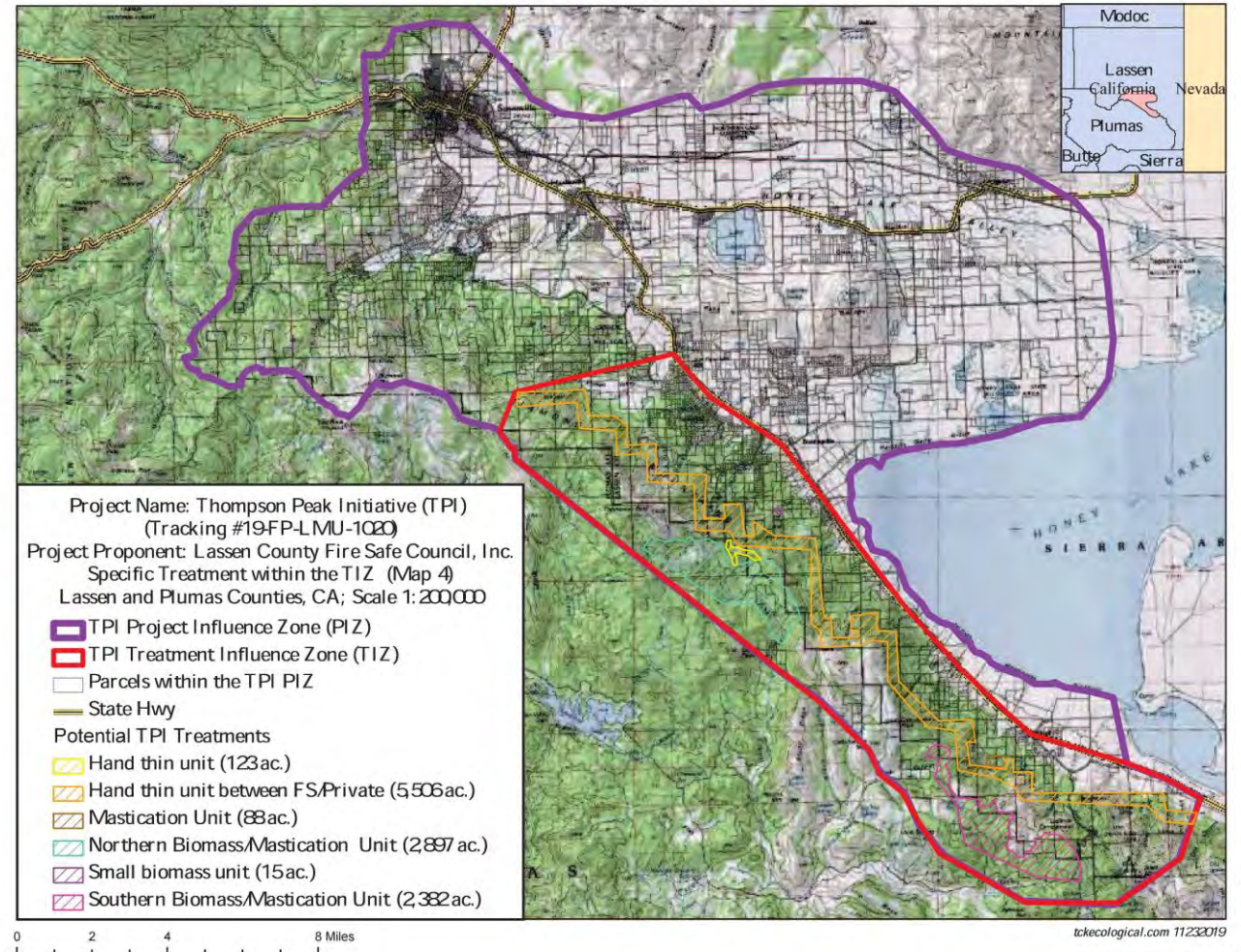
Volunteers collected over 2,300 signatures from local residence who support hazardous fuels reduction in the Janesville-Milford corridor.

CCI Wildfire Prevention Grant Awarded FY 19-20

\$3,341,389

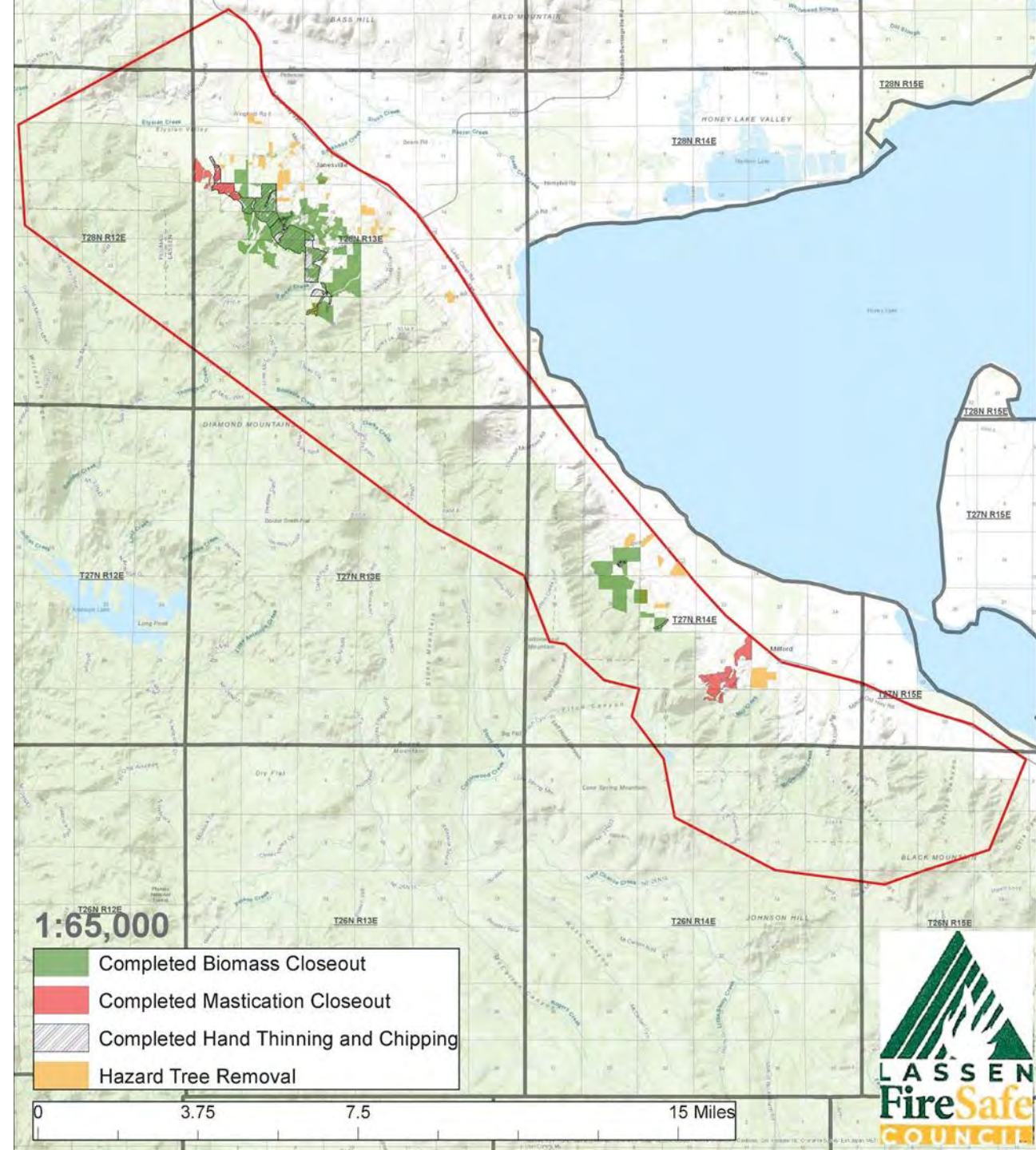
The proposed work will thin forest fuels from strategic areas within the WUI to reduce potential wildfire spread to, and ember showers causing ignitions within, communities at risk from wildfire damage. Fuels will be removed from the most densely forested areas on public and private lands on mountain slopes above communities to reduce risk of fire moving downslope as is common in the project area. Dead and dying trees will be removed from around homes, powerlines, and other infrastructure within communities to reduce the risk of ignitions and spread. Future fires occurring in treated areas will encounter less fuel to burn and are likely to spread less resulting in reduced GHG emissions.

TRIAL MODE - a valid license will remove this message. See the keywords property of this PDF for more information.



Project Implementation

- Hazardous Fuels Reduction on 2,589 acres on Private non-industrial lands.
- 1,015 dead/dying hazard trees removed from within 150' of a home.
- 150+ landowners participated.



Biomass Utilization



- 1,647 acres completed
- \$1,069,672 expended



Hand Thinning



- 639 acres completed
- \$745,488 expended

Mastication

- 300 acres completed
- \$ 174,056 expended



Hazard Tree Removal

- 1,015 dead/dying trees removed from within 150' of a structure.
- 127 structures
- \$906,722 expended



Other accomplishments of 5GG19122 grant

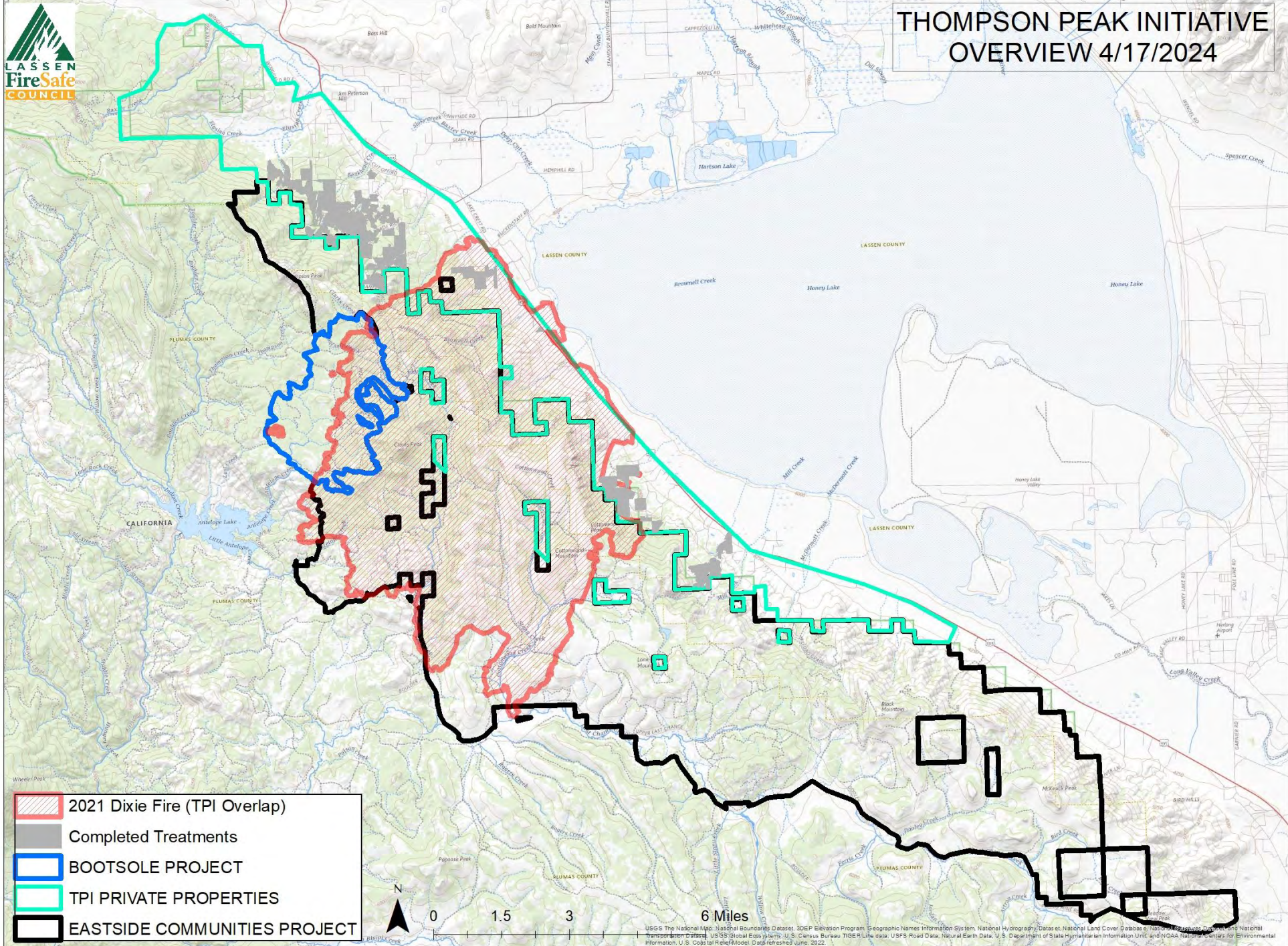
- Additional shovel ready projects: Archaeological surveys and CEQA compliance completed on private lands across the project area.
- Planning: Lassen County title III and CCI grant funded stand exams, specialist reports, surveys, and CE for Bootsole Project. 4,233 acres of hazardous fuels reduction through a combination of treatments on Plumas National Forest.

Thompson Peak Initiative update

- Planning area footprint has increased to 90,000 acres.
- Complementary projects planned / implemented on Plumas National Forest including Bootsole, Cradle Valley, Eastside Communities (Lonespring).
- Postfire recovery. HLVRCD and LFSC implementing and planning additional postfire recovery and reforestation work including the South Lassen Wildfire Recovery Project.
- LFSC and partners are assessing a phase II Thompson Peak WUI fuels treatment project as well as maintaining benefits of phase I.



THOMPSON PEAK INITIATIVE OVERVIEW 4/17/2024



-  2021 Dixie Fire (TPI Overlap)
-  Completed Treatments
-  BOOTSOLE PROJECT
-  TPI PRIVATE PROPERTIES
-  EASTSIDE COMMUNITIES PROJECT



USGS The National Map, National Boundaries Dataset, 3DEP Elevation Program, Geographic Names Information System, National Hydrography Dataset, National Land Cover Database, National Wetlands Inventory, National Transportation Dataset, USGS Global Ecosystems, U.S. Census Bureau TIGER/Line data, USFS Road Data, Natural Earth Data, U.S. Department of State Humanitarian Information Unit, and NOAA National Centers for Environmental Information, U.S. Coastal Relief Model. Data refreshed June, 2022.