

Lassen County Community Wildfire Protection Plan 2018 Work Plan

Lassen County



May 2018



Representatives of resource, fire planning and prevention interests met on February 6, 2018 to develop the Lassen County Community Wildfire Protection Plan, 2018 Work Plan. The process began in December of 2017, through online collaboration and reporting, and it was completed in July of 2018.

Attendees: Tom Esgate, Managing Director Lassen County Fire Safe Council (LCFSC); Ian Harrington and Andrew Mueller/ BLM/Applegate; Chuck Lewis/USFS/Lassen, Eagle Lake; Aaron Albaugh/Lassen County Supervisor; Carol Keefer/LCFSC Board Member; Steve DeBonis, RPF, Sierra Pacific Industries; Heather Grove/USFS/Plumas; Lloyd Keefer, RPF, LCFSC Chair; Karl Todd/BLM Eagle Lake; Paul Armstrong, Modoc Fire Safe Council; Scott Rosikiewicz, RPF, Cal Fire; Stacey Hafen and Sue Rutledge, Modoc Fire Safe Council.

Table of Contents

Priority Private Land Projects Ranking List	v
2018 Wildland Urban Interface Map (Note for best viewing of this map go to lassenfiresafecouncil.org and select CWPP >WUI Map)	1
2015 CWPP Base Map (Note for best viewing of this map go to lassenfiresafecouncil.org and select CWPP >Base Map)	2
Private Land Projects	
Lassen County Fire Safe Council, Inc. Narrative	3
Big Valley Mountain	4
Clear Creek	5
Day Lassen Bench	6
Diamond Mountain	7
Doyle	8
Eagles Nest	9
Janesville	10
Letter Box	11
Lookout/Nubieber	12
Little Valley	13
Madeline	14
Milford	15
North Susanville	16
Piute	17
South Eagle Lake	18
Spalding	19
Spooner Reservoir	20
Private & Public Land Projects	
Cooperative Sagebrush Steppe Restoration Initiative Narrative	21
Ash	22
Ash Valley IV	23
Hayden Hill	24
McBride Springs	25
McClelland	26
Public Agency Projects	
Bureau of Land Management, Eagle Lake Field Office Narrative	27
Freydonyer	29
Little Cleghorn	30
Middle Creek Stepper Restoration Project	31
Shinn Ranch Juniper Reduction	32
Phase I Juniper Reduction	33

Bureau of Land Management, Applegate Field Office	
Ash Creek	34
Dry Cow	35
Juniper Lakes	36
Lassen National Forest, Eagle Lake Ranger District	
Acer Project	37
Diamond Project	38
Moonlight Hand Thinning Project	39
Spalding WUI Project	40
Modoc National Forest	
Ash Timber Sale	41
Ditch Project	42
Plumas National Forest Narrative	43
Eastside Under Burn Crystal Adams	44
Eastside Under Burn Last Chance	45
Cradle Valley	46
Calfire	
Cheney Vegetation Fuel Reduction Project	47
Diane Vegetation Fuel Reduction Project	48

CalFire Lassen Modoc Unit Fire Plan

Incorporated into the Lassen County CWPP 2015 Work Plan by Reference:

http://cdfdata.fire.ca.gov/fire_er/fpp_planning_plans_details?plan_id=224

2018 CWPP Work Plan Private Land Priority Projects Ranking

The Lassen County CWPP Work Plan ranks private land projects in a collaborative process that considers:

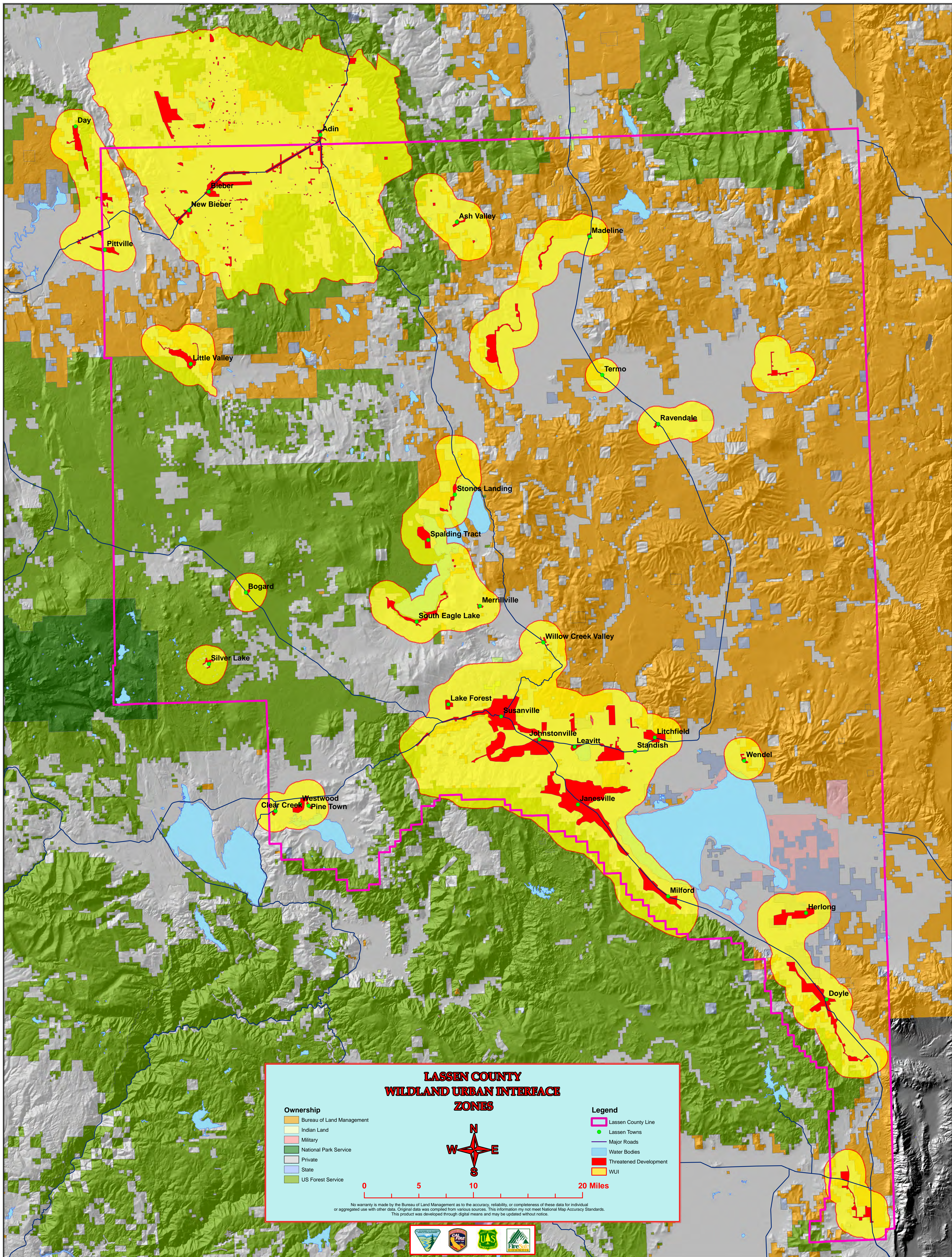
1. Guidelines recommended by the National Association of State Foresters, which state *“Projects are prioritized based on the probability of success, community involvement and collaboration, and sustainability”*¹, and;
2. Calfire, Lassen Modoc Unit ranking criteria, and;
3. Input from all Annual CWPP Work Plan participants

Annual ranking is adopted by consensus.

2018 Lassen County CWPP Ranking Worksheet

CWPP Ranking	Project	Community Involvement	Probability of Success	Collaboration	Sustainability	Match	% of Match Available	Total CWPP Criteria Points	Calfire History	Calfire Fire Threat	Calfire Response	Calfire Proximity	Calfire Scores	Combined Score
1	Diamond Mountain	5	5	5	5	5	100	25	6	6	2	1	15	55
1	Day Lassen Bench	5	5	5	5	5	100	25	6	6	2	1	15	55
1	Little Valley	5	5	5	5	5	100	25	6	6	2	1	15	55
2	Lookout	5	5	5	5	5	100	25	5	6	1	1	13	51
3	North Susanville	5	5	5	5	5	60	25	5	4	0	1	10	45
4	Doyle	3	5	5	4	5	100	22	4	6	0	1	11	44
5	Piute	5	5	5	5	5	100	25	3	4	1	1	9	43
6	Big Valley MTN FB	2	5	5	5	5	100	22	4	4	1	1	10	42
7	Janesville	4	3	5	4			16	5	4	0	1	10	36
8	Cheney	3	3	3	3	5		17	4	4	0	1	9	35
9	Madeline	2	3	3	5	5	100	18	2	4	1	1	8	34
10	Spooner Reservoir	1	5	5	5	5	100	21	0	4	2	0	6	33
11	South Eagle Lake	2	3	5	5	5	100	20	1	4	0	1	6	32
12	Diane Drive	3	3	3	3	5		17	2	4	0	1	7	31
12	McBride Springs	3	5	5	5	5	100	23	0	4	0	0	4	31
13	Eagle Nest	2	3	5	5			15	0	4	3	0	7	29
14	Ash Valley 4	1	2	2	5	5	100	15	0	4	2	0	6	27
14	Letter Box	2	5	5	5		100	17	0	4	1	0	5	27
14	Ash WRP	2	5	2	5	5	100	19	0	4	0	0	4	27
14	McClelland	2	5	2	5	5	100	19	0	4	0	0	4	27
15	Milford	3	1	5	3			12	2	4	0	1	7	26
15	Spaulding	5	3	3	5			16	0	4	0	1	5	26
16	Clear Creek	5	5	5	4			19	0	2	0	1	3	25

¹ Dan Smith, Fire Director, National Association of State Foresters, Presentation at the 2012 Wildland Urban Interface Conference, Reno Nevada.



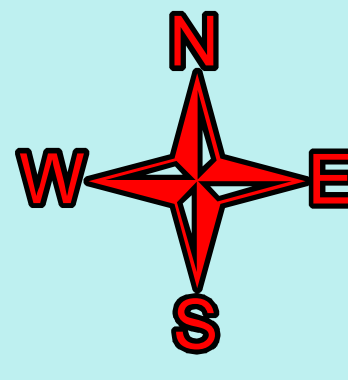
**LASSEN COUNTY
WILDLAND URBAN INTERFACE
ZONES**

Ownership

- Bureau of Land Management
- Indian Land
- Military
- National Park Service
- Private
- State
- US Forest Service

Legend

- Lassen County Line
- Lassen Towns
- Major Roads
- Water Bodies
- Threatened Development
- WUI



0 5 10 20 Miles

No warranty is made by the Bureau of Land Management as to the accuracy, reliability, or completeness of these data for individual or aggregated use with other data. Original data was compiled from various sources. This information may not meet National Map Accuracy Standards. This product was developed through digital means and may be updated without notice.



Lassen County Fire Safe Council

County Fire Plan Base Map

29 April 2011

Fuel Reduction Projects

- USFS Projects**
- Awarded/Completed
 - Planning/In-Progress

- BLM Projects**
- Awarded/Completed
 - Planning/In-Progress

Lassen County Fire Safe Council Projects

- Awarded/Completed
- Planning/In-Progress

Timber Harvest Plans (THPs)

- Industrial Timberlands**
- Awarded/Completed
 - Planning/In-Progress
- Other Private Timberlands**
- Awarded/Completed
 - Planning/In-Progress

- WUI**
- Wildland Urban Interface (WUI)
 - Communities

Ownership

- National Forest
- BLM
- NPS and Other Federal
- State and Local
- Other Ownership

Background Layers

- Major Roads
- Secondary Roads
- County Boundary
- Wilderness



Disclaimer Statement
 The USDA Forest Service uses the most current and complete data available. GIS data and product accuracy may vary. They may be developed from sources of differing accuracy, accurate only at certain scales, based on modeling or interpretation, incomplete while being created or revised, etc. Using GIS products for purposes other than those for which they were intended may yield inaccurate or misleading results. The USDA Forest Service reserves the right to correct, update, modify, or replace GIS products without notification.

Lassen Fire Safe Council Base Map.pdf | Red on Omega HDD External Hard Drive.
 Modified April 29, 2011
 by Priscilla Peterson, GIS, Lassen National Forest

0 6 12 Miles



Lassen County Fire Safe Council

Lloyd Keefer, Chair
Leo Mudrich, Vice Chair
Cathy Dirden, Secretary/Treasurer

P.O. Box 816 • Susanville, CA 96130 • (530) 251-5560 • www.lassenfiresafecouncil.org

June, 2018

This year marked the 12th year that the Lassen County Community Wildfire Protection Plan (CWPP) Working Group has gathered, reviewed and ranked projects and reviewed the Wildland Urban Interface boundaries throughout the county. Under the MOU with the participants, Lassen County Fire Safe Council, Inc. continues in its leadership role in CWPP planning and coordination. Our monthly general meeting also continue to be forums for CWPP participants and the community as a whole. In August of 2015 the Lassen County Board of Supervisors allocated significant funds to support our CWPP and *Firewise Communities USA* efforts, which continue to allow us to dedicate more time and energy to these critical programs.

The CWPP Working Group continues to place its highest priority on moving forward with planning for Diamond Mountain fuel treatments. All participating CWPP partners believe that a combined public/private partnership is best path forward to preserve and restore the greater Susanville watershed and protect communities in the shadow of Diamond Mountain. LCFSC continues to take the lead role in coordinating the effort.

Lassen County Fire Safe Council, Inc. continues to build on our strong partnerships. We have an aggressive program of active and planned fuel treatments and we are also ramping up the pace of getting Lassen County communities organized and recognized by the *Firewise Communities USA* program. We have 10 recognized communities to date.

Part and parcel of this *Firewise* effort is our one-on-one contact with residents through our Risk Assessment in the Home Ignition Zone consultations. Here residents learn what they can do to reduce structural ignitability in the advent of a nearby wildfire. One important point to remember: **Many of the homes that are lost in wildfires are ignited by embers from a fire a substantial distance away, and then the home ignites the adjacent vegetation, not vice versa!** As we say in our homeowner consultations: "This new information is standing things on their head in California where there is a huge and important emphasis on defensible space." Just having defensible space will not protect the home from an ember shower, one must also address structural ignitability. We continue to receive rave reviews from residents during our visits and we often hear "I had no idea..." at the close of our consultations.

Last year we continued to work on the current phases of our Day Lassen Bench, Little Valley and private lands within the Diamond Mountain watershed. In the coming year we hope to acquire funds to begin treatments for US Forest Service lands within Diamond Mountain watershed.

A big thank you to all our partners in the Lassen County CWPP Working Group,

Lloyd Keefer,

Chair



We are active participants in FIREWISE Communities USA programs.

2018 Lassen County CWPP Work Plan

WUI Area: Day/Lookout/Nubieber

Funding: Planning/Not Funded

2018 Planning

Number of Acres: 400

Agency or Agencies: LCFSC, SPI

Project Name: Big Valley Mtn. Fuelbreak

Project Coordinates: -121.232 41.067

Summary of Project: Proposed 11-mile long shaded fuelbreak along A-Line and B-Line roads on Big Valley Mtn in Lassen and Modoc counties. Project would be +/- 300 ft. wide and begin at Hwy 299E at the southern end of the project area. Creation of shaded fuelbreak would include removal of biomass material from the understory as well as treating brush and ground fuels. The shaded fuelbreak would assist agency firefighting efforts by slowing or - under certain conditions - stopping a wildfire, and will also provide an anchor point for fireline construction and a safe corridor for evacuation of public and agency personnel if needed. In addition, the presence of this fuelbreak will lower the risk to residences and communities along the Day Road to the west of the project area and the Foothill Road to the east of it.

Project Map:



2018 Lassen County CWPP Work Plan

WUI Area: Westwood-Clear Creek

Funding: Partially Funded

2018 Implementation

Number of Acres: 1850

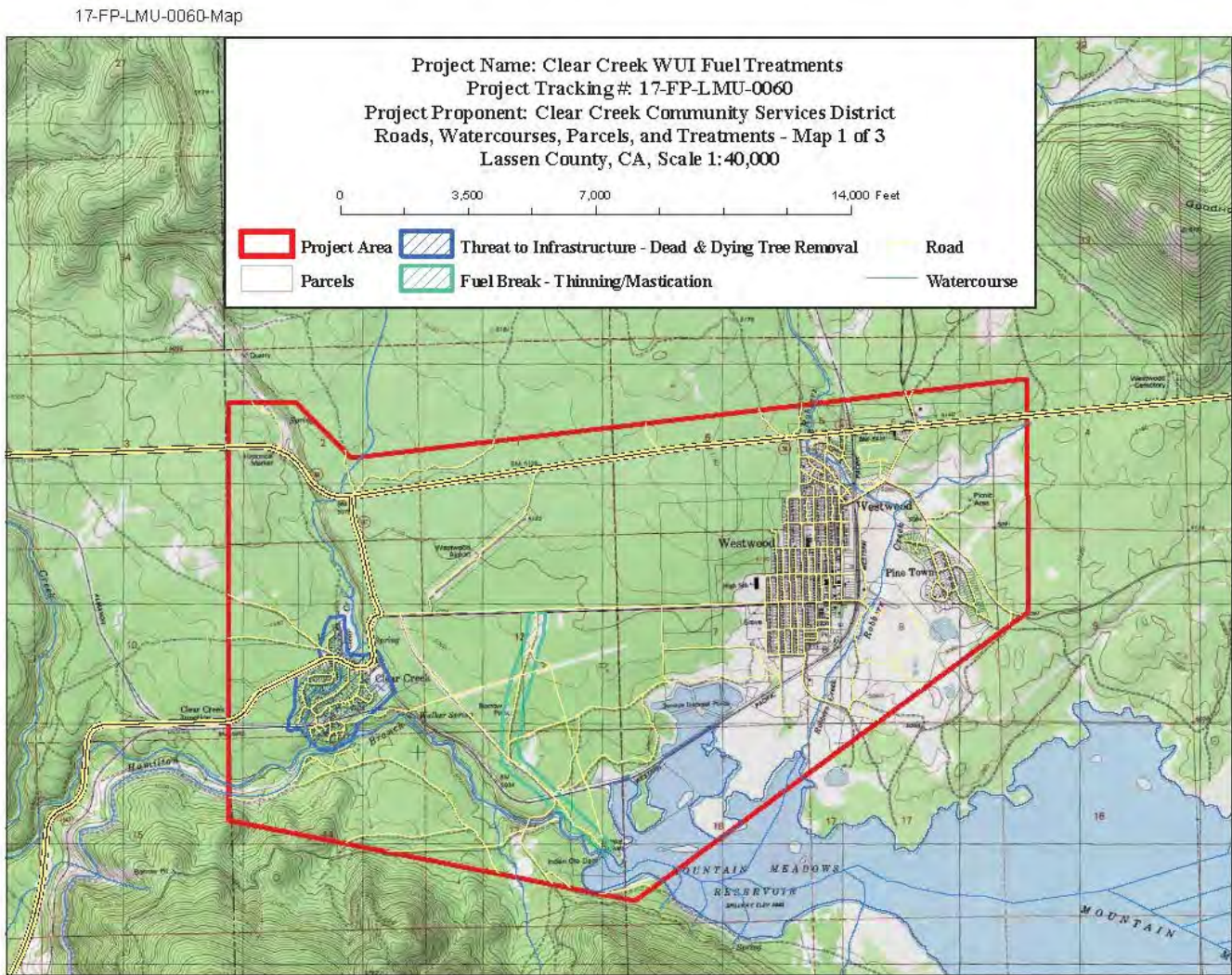
Agency or Agencies: LCFSC, SPI, W.M. Beaty, CAL FIRE, PG&E, Clear Creek CSD

Project Name: Clear Creek Forest & Meadow Restoration Project

Project Coordinates: N40.29628 W121.05017

Summary of Project: LCFSC has Completed 830 acres of the project to date. Additional funds will be requested to perform more mastication treatments will restore the watershed and reduce hazardous fuel loads within and around the Clear Creek community along with LCFSC partners SPI, W.M. Beaty & Associates and PG&E. Brush fuels will be masticated where they pose a threat to homes and/or are within potential evacuation corridors. We will also perform additional Risk in the Home Ignition Zone/structure ignitability assessments with community residents and provide additional treatments around homes if funds become available.

Project Map:



tdceecological.com 06032018

2018 Lassen County CWPP Work Plan

WUI Area: Doyle

Funding: Planning/Not Funded

2018 Planning

Number of Acres:

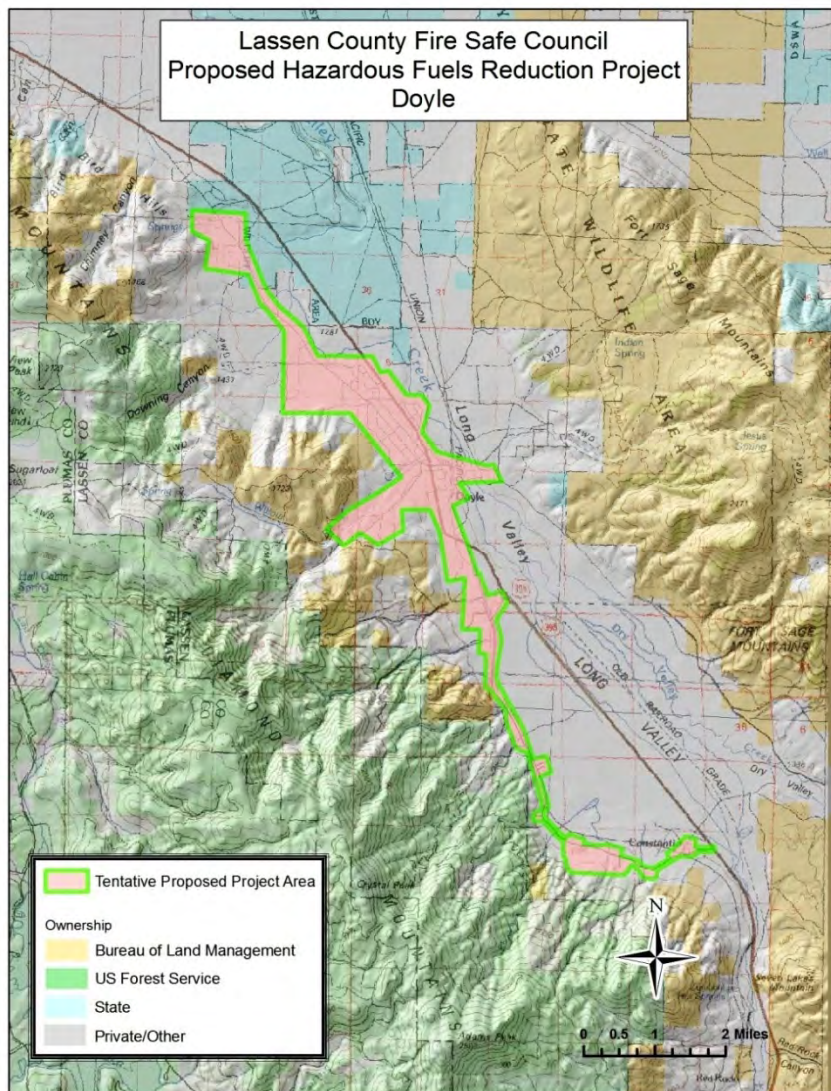
Agency or Agencies: LCFSC, PNF, BLM

Project Name: Doyle Fuel Treatments and Risk Assessments

Project Coordinates: N40.0273 W120.1030

Summary of Project: LCFSC, in conjunction with PNF and BLM, is in the initial planning stage of assisting the community of Doyle in gaining Firewise Communities USA status/certification and with a possible fuels treatment project that could include fuel breaks in sagebrush areas surrounding the community. Also under consideration could be private land forest thinning with cooperating landowners that are adjacent to PNF. Risk Assessments in the Home Ignition Zone/structural ignitability assessments would also be conducted with community residents. LCFSC has been making its initial contacts with community members.

Project Map:



2018 Lassen County CWPP Work Plan

WUI Area: Day, Lookout, Nubieber

Funding: Partially Funded

2018 Implementation

Number of Acres: 13,400

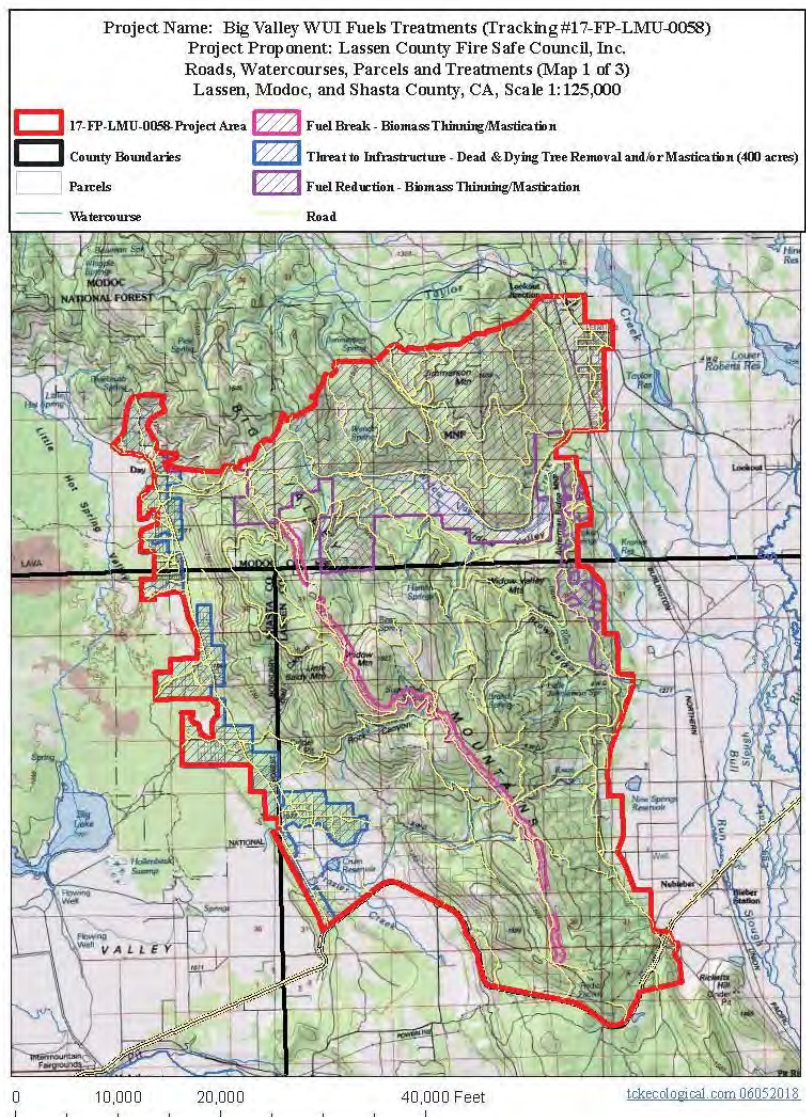
Agency or Agencies: LCFSC, DLBFSC, Lassen & Shasta Counties, SPI, WM Beaty, CAL FIRE, USFS

Project Name: Day Lassen Bench Mastication

Project Coordinates: N 41.1538 W120.3539

Summary of Project: Private land mastication of brush along the Day Road corridor to reduce hazardous fuel loads that will allow for safer evacuations and aid in potential fire suppression efforts. The DLBFSC & LCFSC are continuing their efforts to partner with the Hat Creek Ranger District to get hazardous fuel loads on Forest Service land within the corridor treated as well. Shasta County & Lassen Counties are providing funding a CWPP update for the community.

Project Map:



2018 Lassen County CWPP Work Plan

WUI Area: Susanville

Funding: Partially Funded

2018 Implementation

Number of Acres: 7000

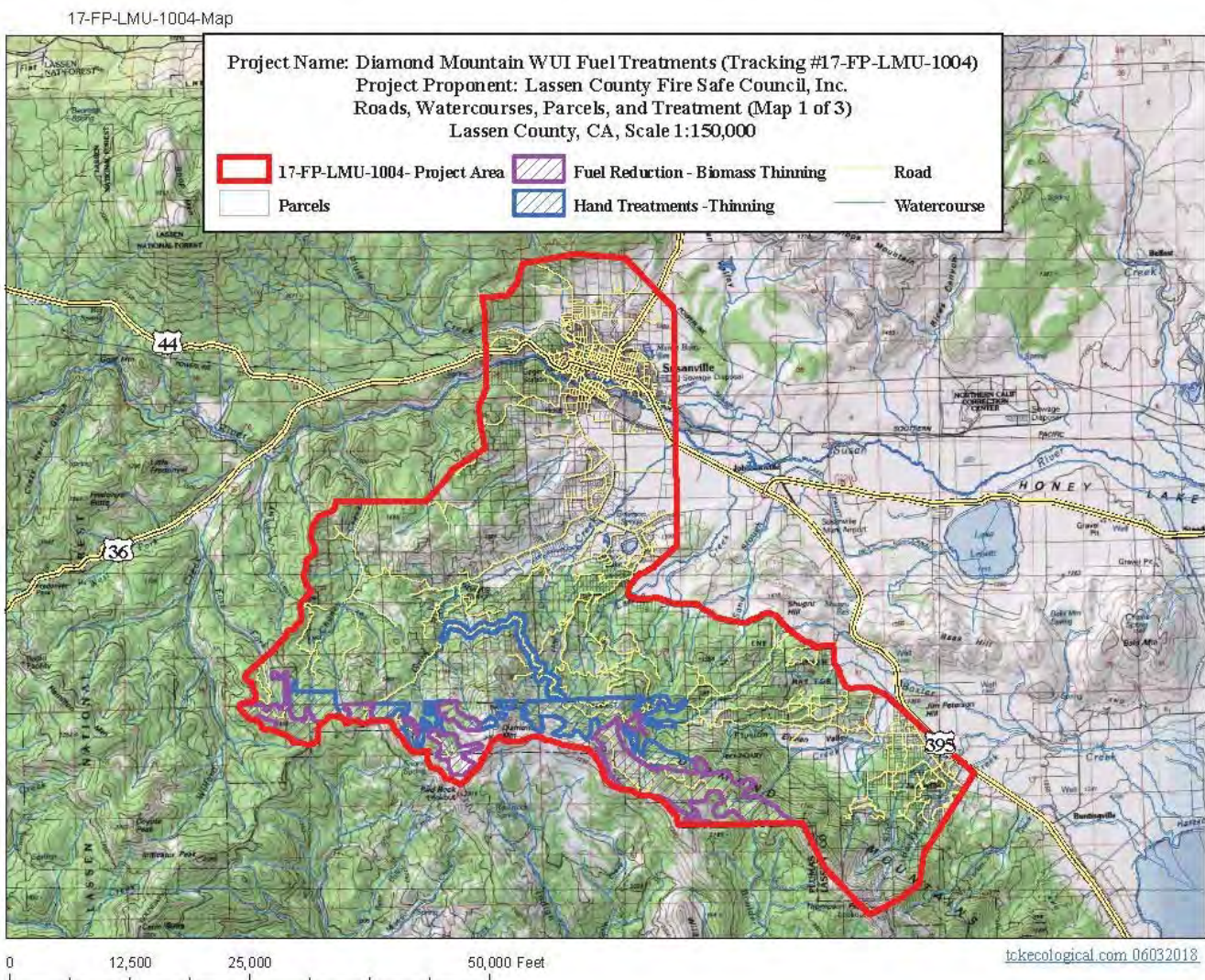
Agency or Agencies: LCFSC, CAL FIRE, SNC, HLVRCD, USFS, WM Beaty, BLM

Project Name: Diamond Mountain

Project Coordinates: N40.3214 W120.6690

Summary of Project: LCFSC will continue planning for a collaborative fuels treatment project along and below Diamond Mountain south of Susanville. Work will tie in to work previously completed by LCFSC, BLM and HLVRCD. LNF will be the lead for USFS land and LCFSC will be the lead for private land within the project area. It is anticipated the LCFSC will be asking for assistance from CFSC, SNC, CalFire and USFS with funding.

Project Map:



2018 Lassen County CWPP Work Plan

WUI Area: South Eagle Lake

Funding: Planning/Not Funded

2018 Planning

Number of Acres:

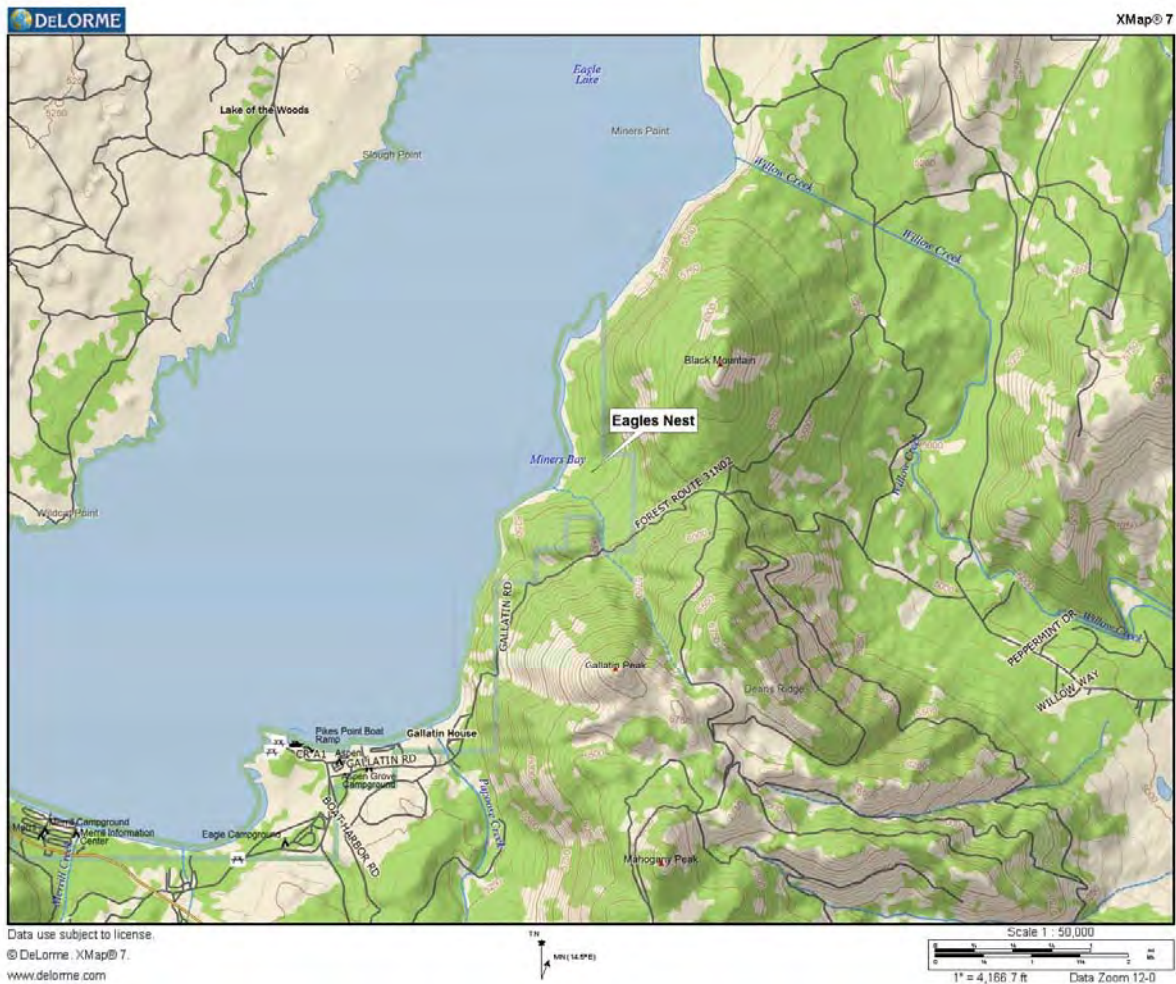
Agency or Agencies: LCFSC,LNF/ELRD, SPI

Project Name: Eagles Nest Planning

Project Coordinates: N40.5830 W120.7450

Summary of Project: LCFSC will continue planning and scoping of a project in the Eagles Nest Community in the South Eagle Lake Community. Project is within LNF and we will be working with LNF/ELRD and neighboring property owner SPI

Project Map:



2018 Lassen County CWPP Work Plan

WUI Area: Janesville

Funding: Partially Funded

2018 Planning

Number of Acres: 200

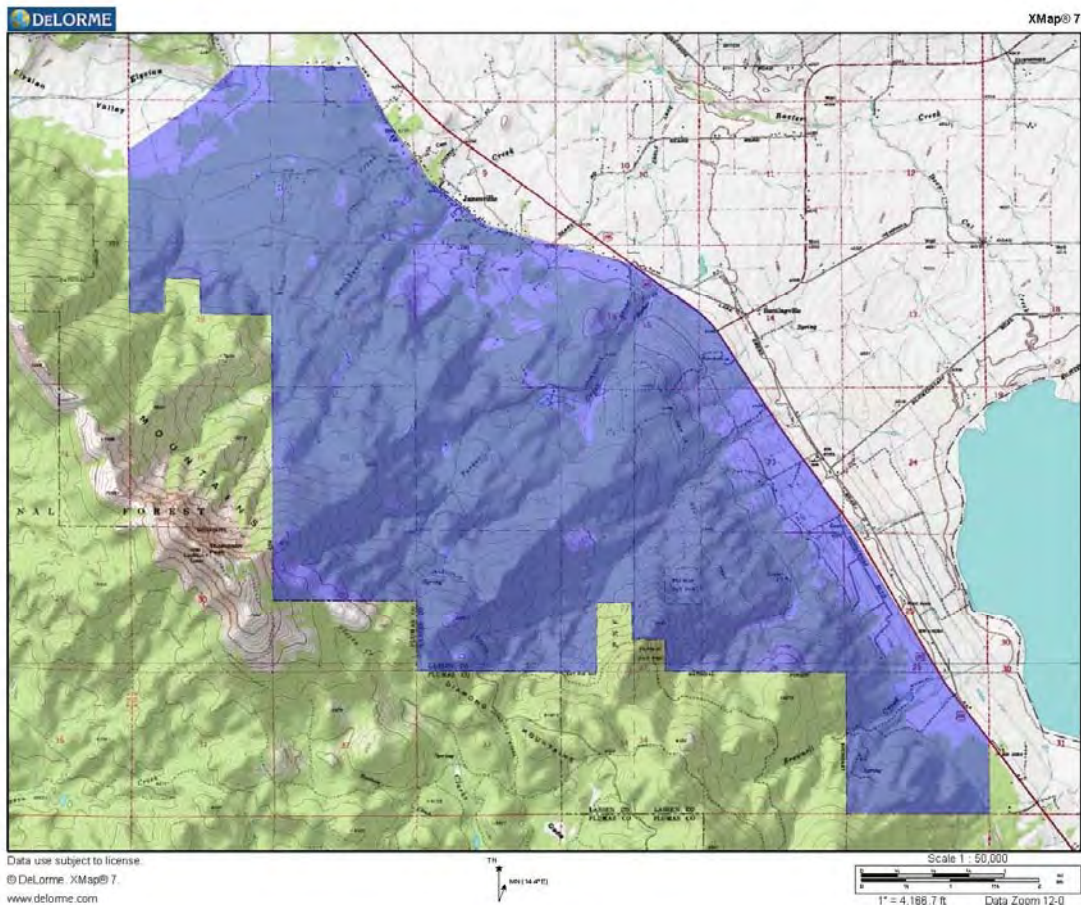
Agency or Agencies: LCFSC, Janesville Town Council, Lassen County RAC

Project Name: Janesville Fuel Treatments and Risk Assessments

Project Coordinates: N40.26777 W120.49461

Summary of Project: Project is the continuation of the 2014 fuel treatments and Risk Assessments in the Home Ignition Zone/structural ignitability assessments. More residents signed up in our previous phases than the available funds would service. Lassen RAC has previously supplied funding. The planned treatments include developing defensible space around homes and potentially 200 additional acres of landscape scale fuel treatments. Forest stands will be thinned and brush fuels will be masticated where they pose a threat to homes and/or are within potential evacuation corridors. Biomass utilization of material would be used to reduce costs.

Project Map:



2018 Lassen County CWPP Work Plan

WUI Area: Adin

Funding: Planning/Not Funded

2018 Implementation

Number of Acres: 400

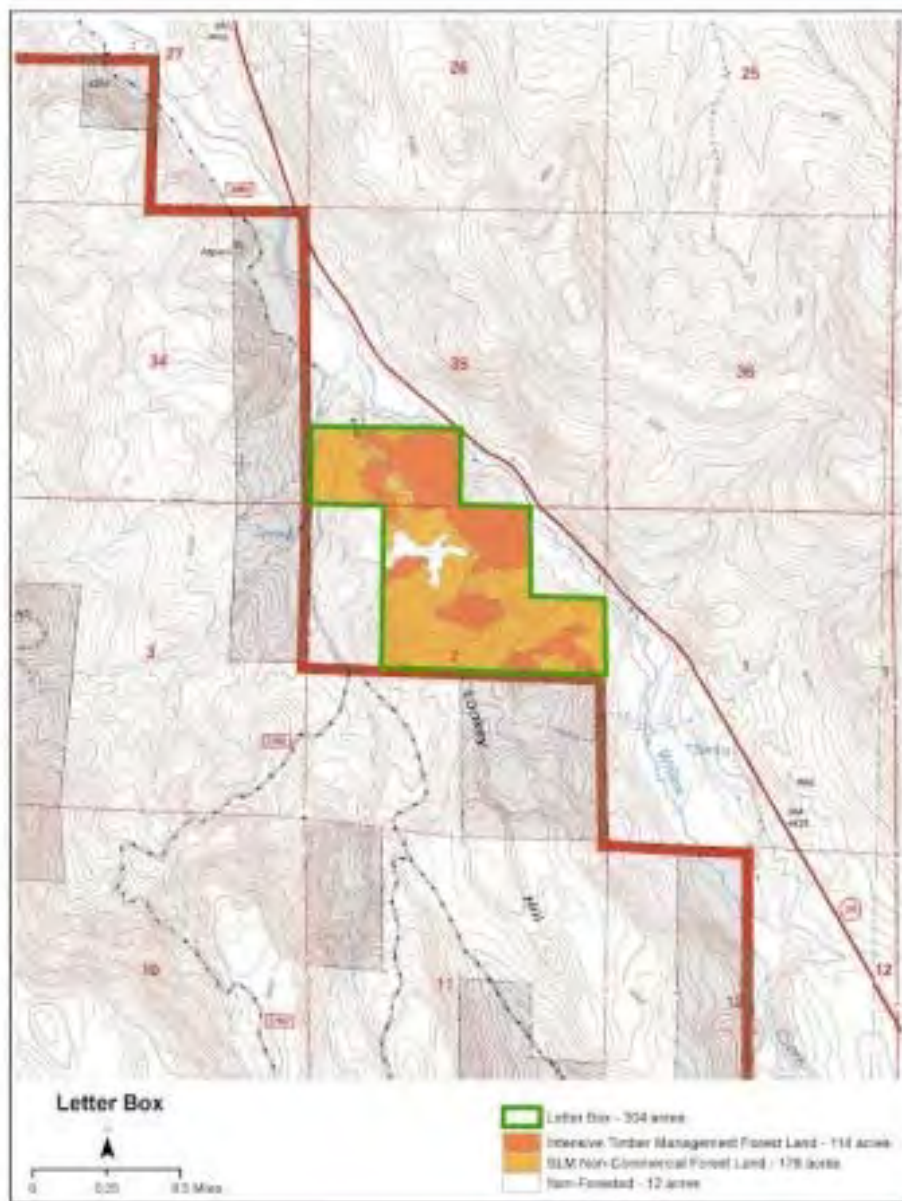
Agency or Agencies: LCFSC, BLM-AFO

Project Name: Letter Box

Project Coordinates: 0676147 4549573

Summary of Project: Commercial thinning of overstocked stands to achieve the desired stocking level (approximate BA of 80sq. ft.) to increase health and vigor. Commercial and non-commercial sanitation harvest of trees to control insects and disease.

Project Map:



2018 Lassen County CWPP Work Plan

WUI Area: Lookout/Nubieber

Funding: Partially Funded

2018 Implementation

Number of Acres: 4200

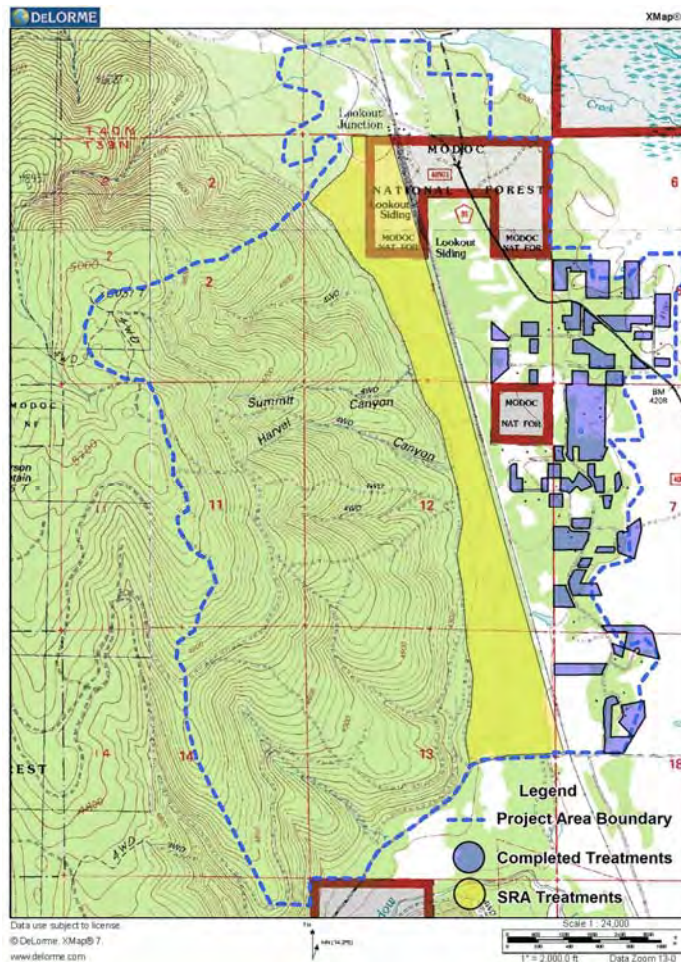
Agency or Agencies: LCFSC, PRCD, SNC, CalFire, W.M. Beaty, SPI, CFSC

Project Name: Lookout Watershed Restoration & WUI Treatments

Project Coordinates: N41.1827 W121.2012

Summary of Project: LCFSC & PRCD have completed 2,000 acres and will be applying for additional funding as opportunities arise. Project reduces hazardous fuel loads and restores the forest, watershed and critical wildlife habitat. Invasive western juniper will be removed and pine stands will be thinned to 40-50% crown closures. The previous and current phases have been funded by SNC & CFSC; CalFire has committed Conservation Crews to assist with follow-up hand treatments. This Phase will focus on fuels west of the RR Tracks and south of Widow Valley Road; additional treatments may be conducted within the Lookout Ranchetts community if sufficient funding is available. Project lies within Lassen and Modoc Counties and is also a top priority in the Modoc County CWPP.

Project Map:



2018 Lassen County CWPP Work Plan

WUI Area: Little Valley

Funding: Partially Funded

2018 Implementation

Number of Acres: 300

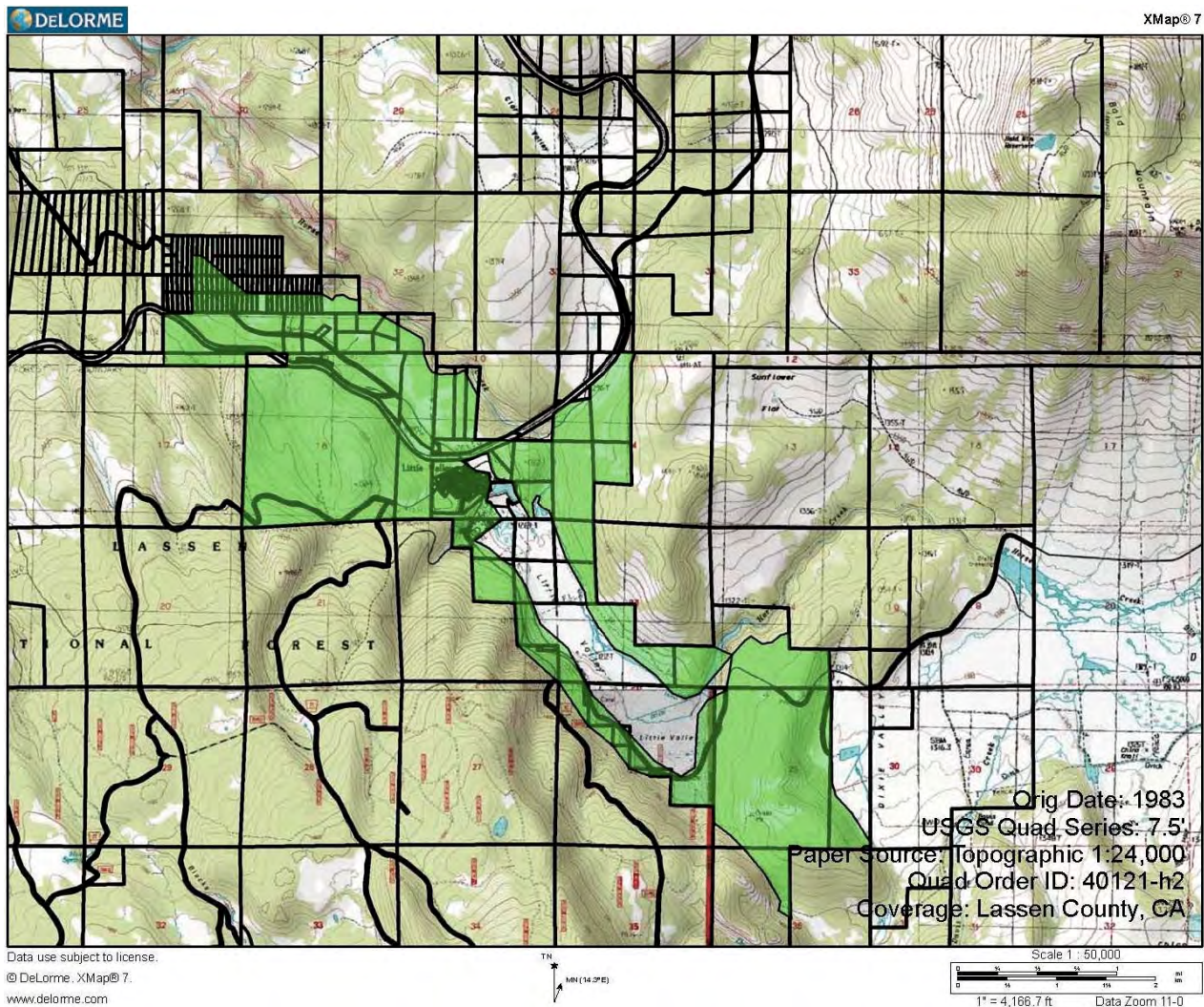
Agency or Agencies: LCFSC, Calfire, PG&E, USFWS, Little Valley CSD

Project Name: Little Valley Forest & Meadow Restoration Project

Project Coordinates: N40.8938 W121.1815

Summary of Project: LCFSC has received partial funding for this project. We are seeking funds to complete the project. Primary work will be the removal of invasive western juniper and forest thinning in overstocked pine stands. The project will also assist community homeowners with treatments within the Little Valley residential neighborhood and protect community infrastructure (PG&E electric lines). Risk in the Home Ignition Zone/structure ignitability assessments within and around the community will also be part of the project.

Project Map:



2018 Lassen County CWPP Work Plan

WUI Area: Madeline

Funding: Planning/Not Funded

2018 Planning

Number of Acres: 8,718

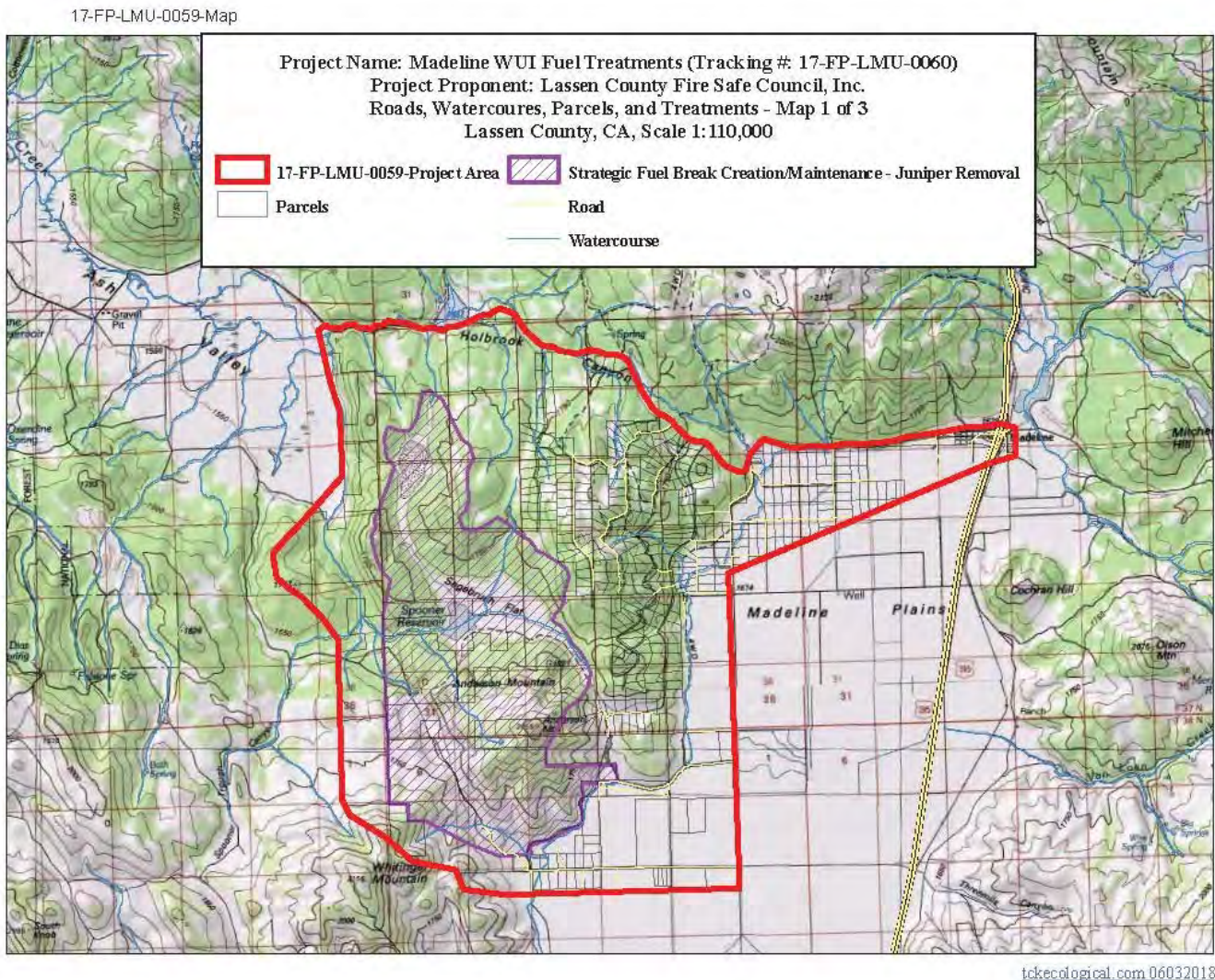
Agency or Agencies: LCFSC, PRCD, CAL FIRE, BLM-AFO

Project Name: Madeline

Project Coordinates: N41.0514 W120.4567

Summary of Project: Project to include a Community Assessment, Firewise Community recognition, Risk Assessments in the Home Ignition Zone/Structural Ignitability Assessments, Fuel Treatments Around Structures and Landscape Scale Fuel Treatments

Project Map:



2018 Lassen County CWPP Work Plan

WUI Area: Milford

Funding: Partially Funded

2018 Planning

Number of Acres: N/A

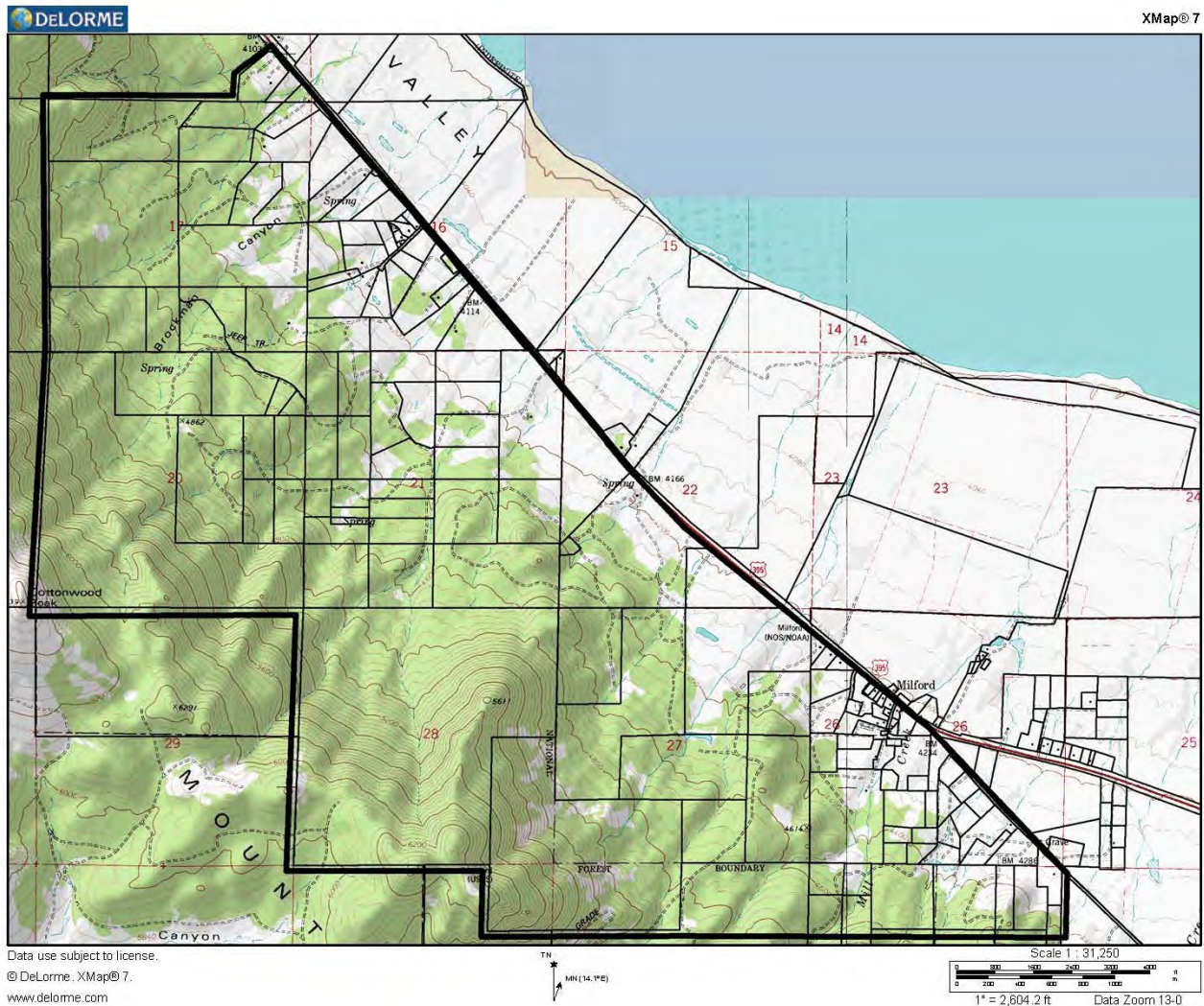
Agency or Agencies: LCFSC, CFSC

Project Name: Milford Firewise Activities and Risk Assessments

Project Coordinates: N40.1768 W120.3885

Summary of Project: LCFSC completed the first phase of fuel treatments in 2015. 600 acres of fuel treatments were accomplished along with residential Risk Assessments in the Home Ignition Zone/structural ignitability assessments. Firewise Community re-certification activities are planned and another phase of fuel treatments will be planned if a significant number of property owners express interest..

Project Map:



2018 Lassen County CWPP Work Plan

WUI Area: Susanville

Funding: Planning/Not Funded

2018 Planning

Number of Acres: 5000

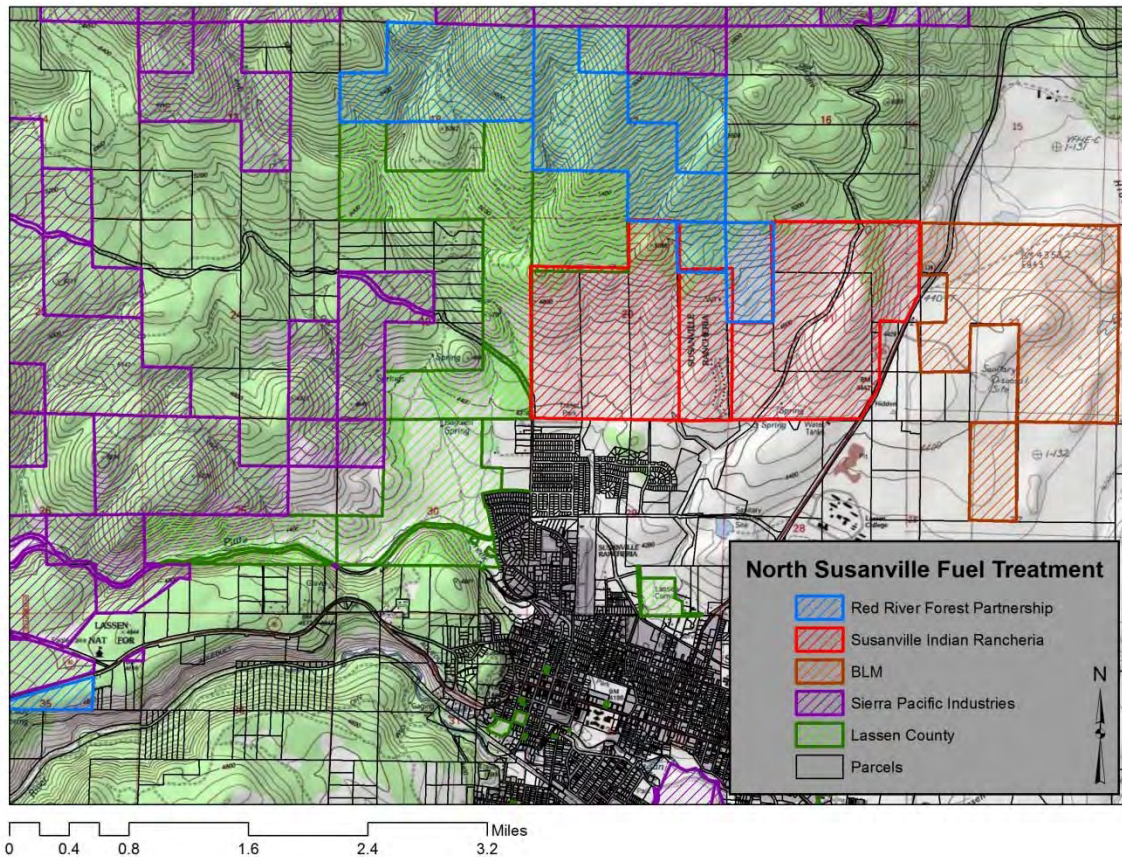
Agency or Agencies: LCFSC/SIR/BLM/Beaty/SPI/Lassen County/City of Susanville

Project Name: North Susanville Fuel Treatment

Project Coordinates: N40.4460 W120.6435

Summary of Project: LCFSC is in the preliminary stages of organizing a partnership between the Susanville Indian Rancheria (SIR), Bureau of Land Management (BLM) - Eagle Lake Field Office (ELFO), Beaty and Associates, Sierra Pacific Industries (SPI), the County of Lassen, the City of Susanville and the Lassen County Fire Safe Council (LCFSC) to treat fuels within the Northwest and North WUI of Susanville from Hwy 36 to Hwy 139. Treatments will include mechanical thinning, biomass removal, hand thinning, and underburning. The objectives of the project are to reduce surface, ladder, and canopy fuels in order to protect the City of Susanville and improve forest health within the Susan River Watershed.

Project Map:



2018 Lassen County CWPP Work Plan

WUI Area: Lake Forest & Susanville

Funding: Planning/Not Funded

2018 Planning

Number of Acres: 1000

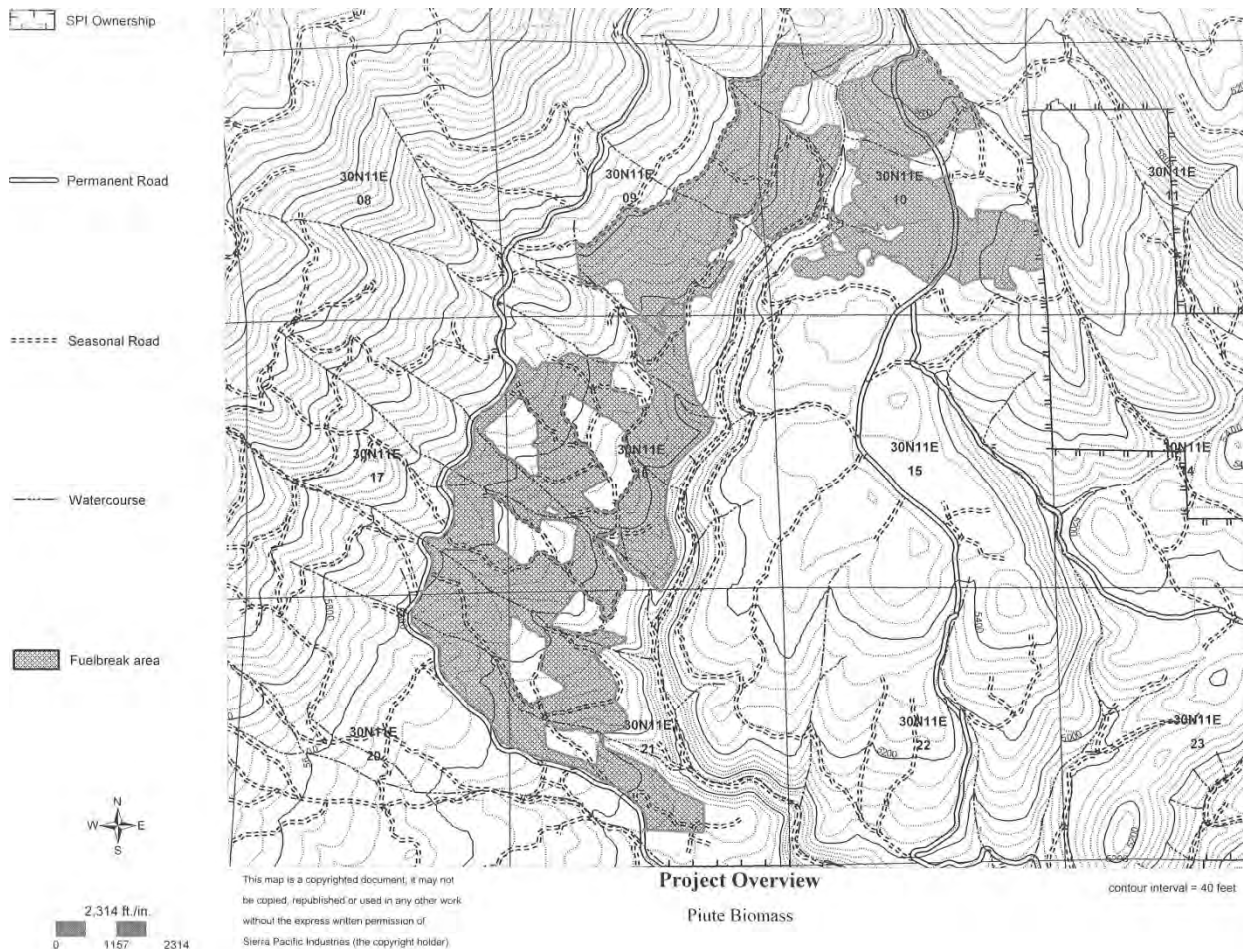
Agency or Agencies: LCFSC, SPI

Project Name: Piute Creek Fuels Reduction

Project Coordinates: N40.46481 W120.75329

Summary of Project: Conduct landscape level fuel treatments to reduce the threat of catastrophic wildfire within the Piute Creek watershed. Communities at risk are Lake Forest and Susanville. Forest stands to be treated include 35 year old plantations resulting from the 1977 Eagle Lake Fire. Treatments will consist of thinning and chipping of sub merchantable trees followed with hand or mechanical methods to reduce loading of brush and slash fuels along County road A-1, which is a high use recreational road and potential evacuation corridor for Lake Forest and Spaulding communities. Biomass material will be utilized to help offset treatment costs. This project will continue the previous work done by LCFSC and SPI around Lake Forest.

Project Map:



2018 Lassen County CWPP Work Plan

WUI Area: South Eagle Lake/Susanville

Funding: Partially Funded

2018 Implementation

Number of Acres: 5737

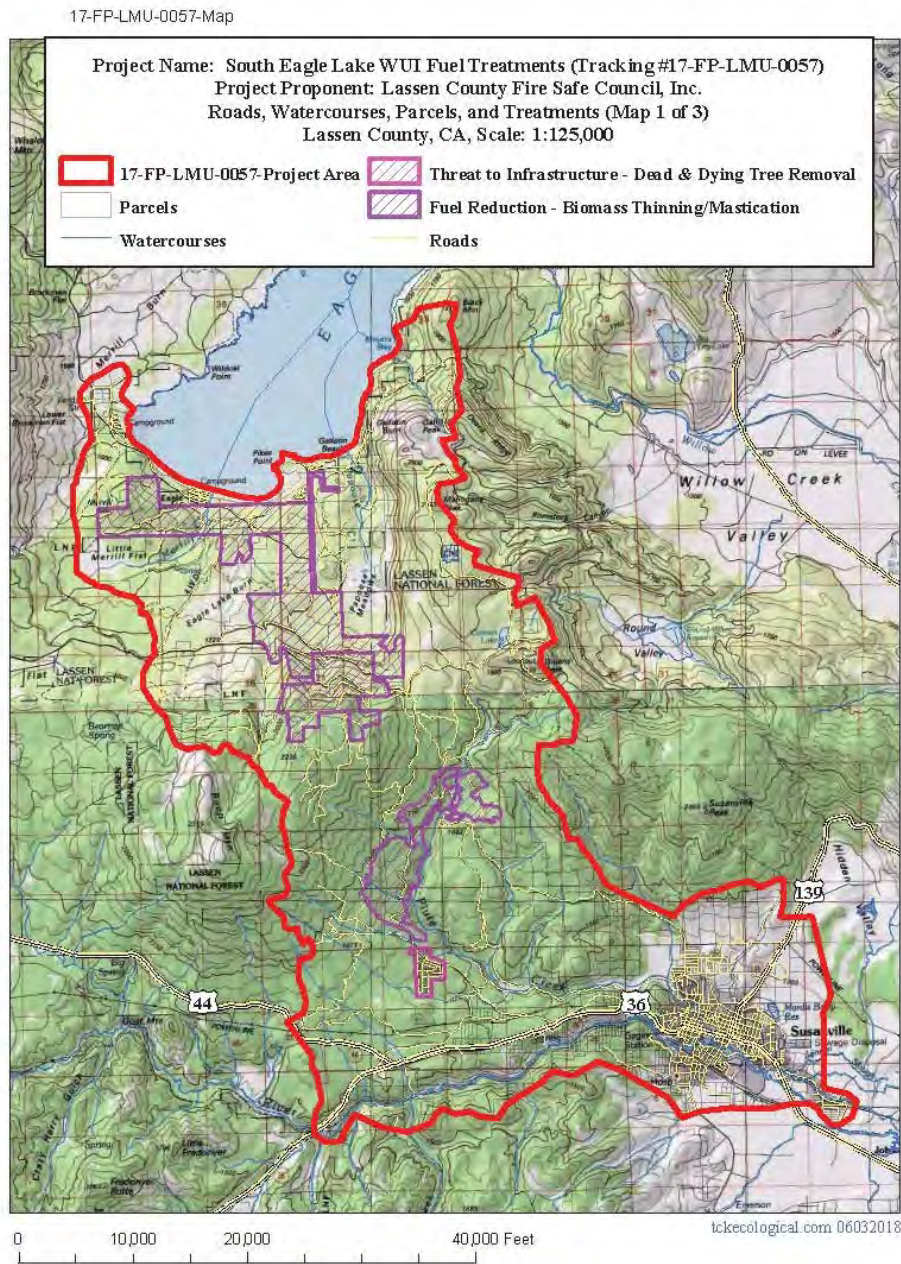
Agency or Agencies: LCFSC, WMB, FGS

Project Name: South Eagle Lake/Lake Forest, Forest & Watershed Restoration

Project Coordinates: 40 32 22 120 47 1

Summary of Project: Biomass thinning of plantation and native forests to restore forest and watershed.

Project Map:



2018 Lassen County CWPP Work Plan

WUI Area: Spaulding

Funding: Planning/Not Funded

2018 Planning

Number of Acres: 40

Agency or Agencies: LCFSC

Project Name: Spaulding Fuel Reduction Planning and Risk Assessments

Project Coordinates: N40.6573 W120.7759

Summary of Project: LCFSC will be seeking funds to perform risk assessments in the home ignition zone and fuel reduction treatments within and around the Spaulding community in Lassen County. Green waste days will be planned for the Summer of 2016. Work will complement previously completed work by LNF. We may be asking for funding and/or assistance from Lassen County/Title III, CFSC, CalFire, Lassen County RAC or USFS

Project Map:



2018 Lassen County CWPP Work Plan

WUI Area: Madeline & DFPZ

Funding: Planning/Not Funded

2018 Planning

Number of Acres: 4243

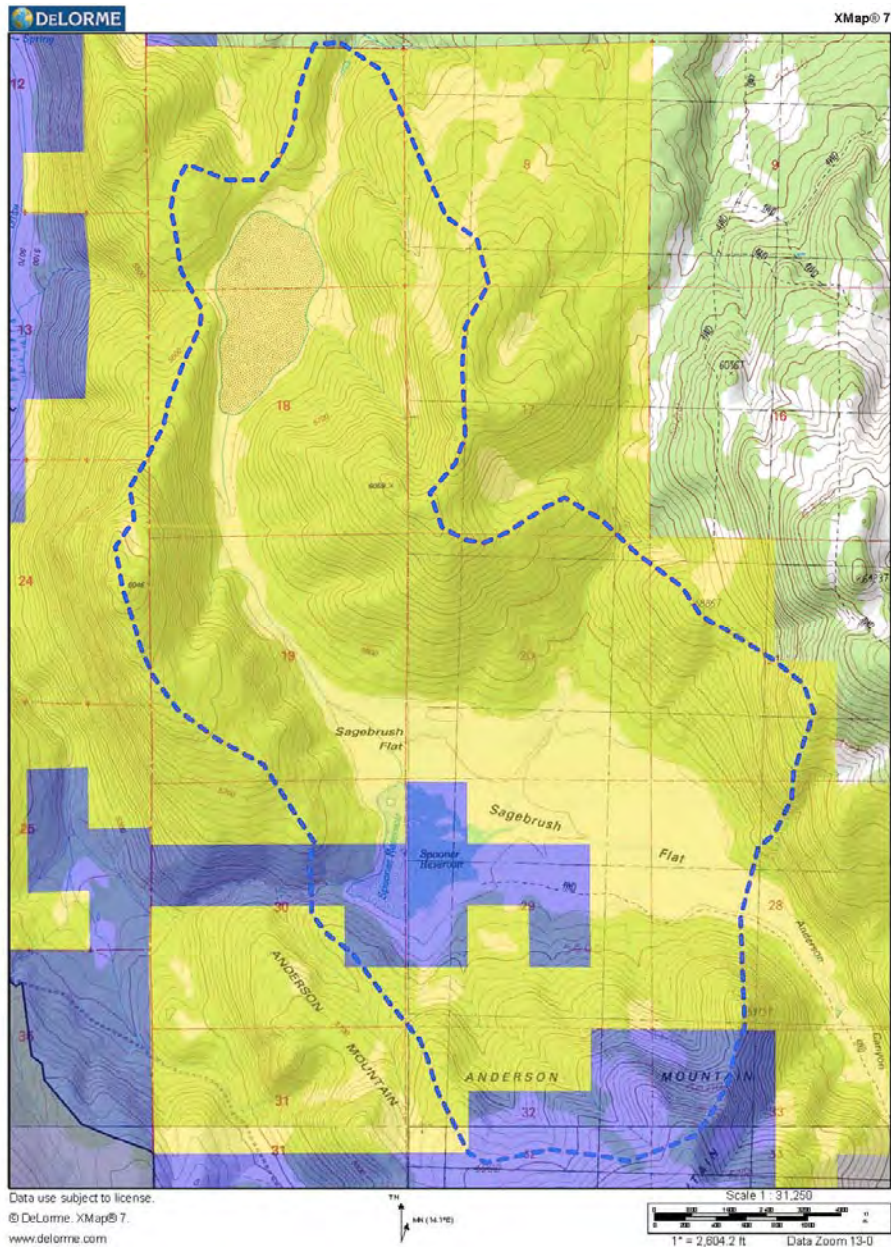
Agency or Agencies: LCFSC, PRCD, BLM

Project Name: Spooner Reservoir Watershed Restoration Project

Project Coordinates: 41.0221 120.6217

Summary of Project: Project is a watershed restoration project that will remove invasive western juniper through biomass utilization treatments. Hydrological function, Sage Grouse and other wildlife habitat will be restored. Project is a combination of private land (blue) and BLM managed land (yellow).

Project Map:





Susanville Indian
Rancheria



Cooperative Sagebrush Steppe Restoration Initiative

Thomas W. Esgate, Project Director
PO Box 816
Susanville, California 96130
530-310-0146
twesgate@sbcglobal.net

The *Cooperative Sagebrush Steppe Restoration Initiative* is an informal partnership that began in 2004, with the principle partners being the Pit Resource Conservation District, Lassen County Fire Safe Council, Susanville Indian Rancheria and University of California Cooperative Extension, Lassen County. We entered into a formal Memo of Understanding in 2007 with Lassen and Modoc Counties; CalFire; North Cal-Neva Resource Conservation and Development Council; United States Department of Interior, Bureau of Land Management; United States Department of Agriculture, US Forest Service. We partner with almost every conceivable agency to plan and implement sagebrush steppe and eastside pine restoration projects that are mitigating the impacts of invasive western juniper (*Juniperus occidentalis*).

Our projects to date have restored over 19,000 acres of critical wildlife habitat and watershed. The Lassen County Resource Advisory Committee has been a solid partner that funded our administrative needs from 2009-12. 2018 promises to be another successful year with our current phase of our Ash Valley Project scheduled for completion and additional hand treatments planned for Hayden Hill.

2018 Lassen County CWPP Work Plan

WUI Area: Ash Valley

Funding: Planning/Not Funded

2018 Planning

Number of Acres: 1900

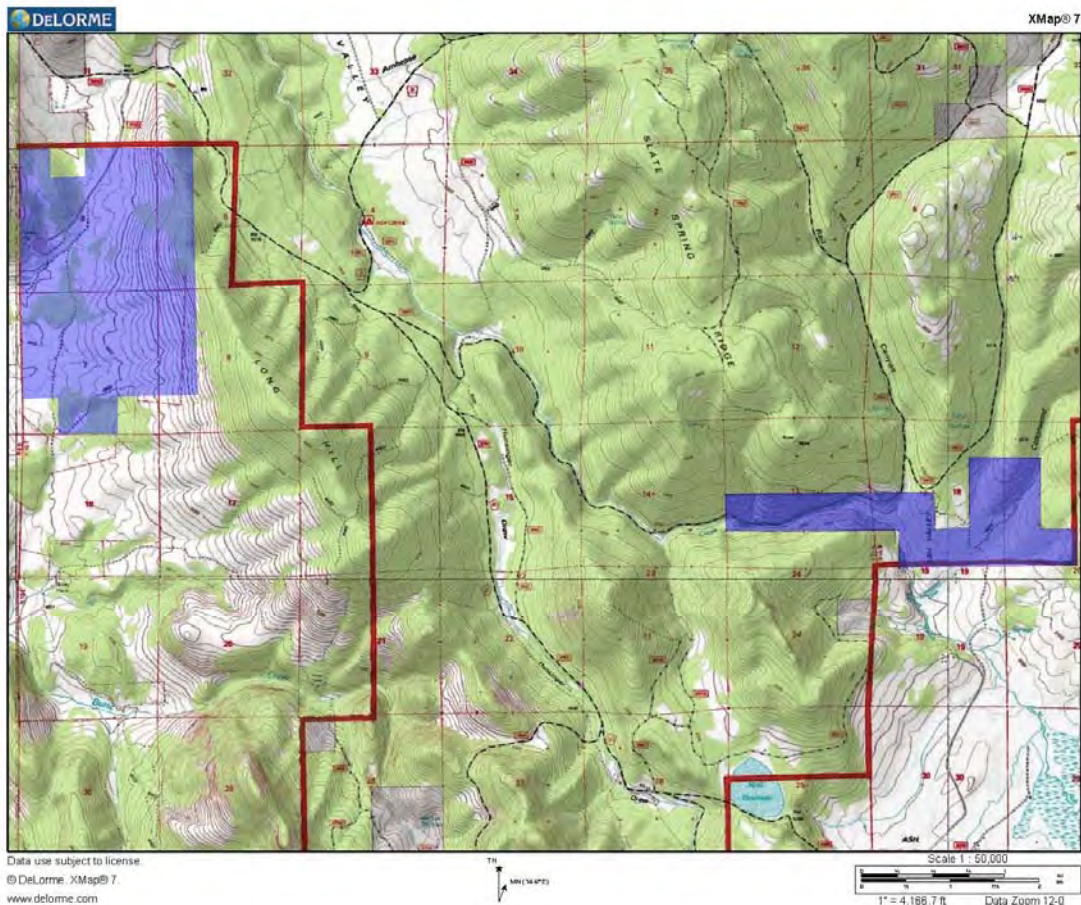
Agency or Agencies: CSSRI

Project Name: Ash Watershed Restoration Project

Project Coordinates: N41.1435 W120.8013

Summary of Project: CSSRI will continue planning with the Modoc National Forest (MDF) on a collaborative fuels treatment project west and north of the Ash Valley Community. MDF will be the lead for USFS land and LCFSC will be the lead for private land within the project area. It is anticipated CSSRI will be asking for assistance from CFSC, CalFire, NRCS and USFS with funding.

Project Map:



2018 Lassen County CWPP Work Plan

WUI Area: Madeline & DFPZ

Funding: Planning/Not Funded

2018 Planning

Number of Acres: 2554

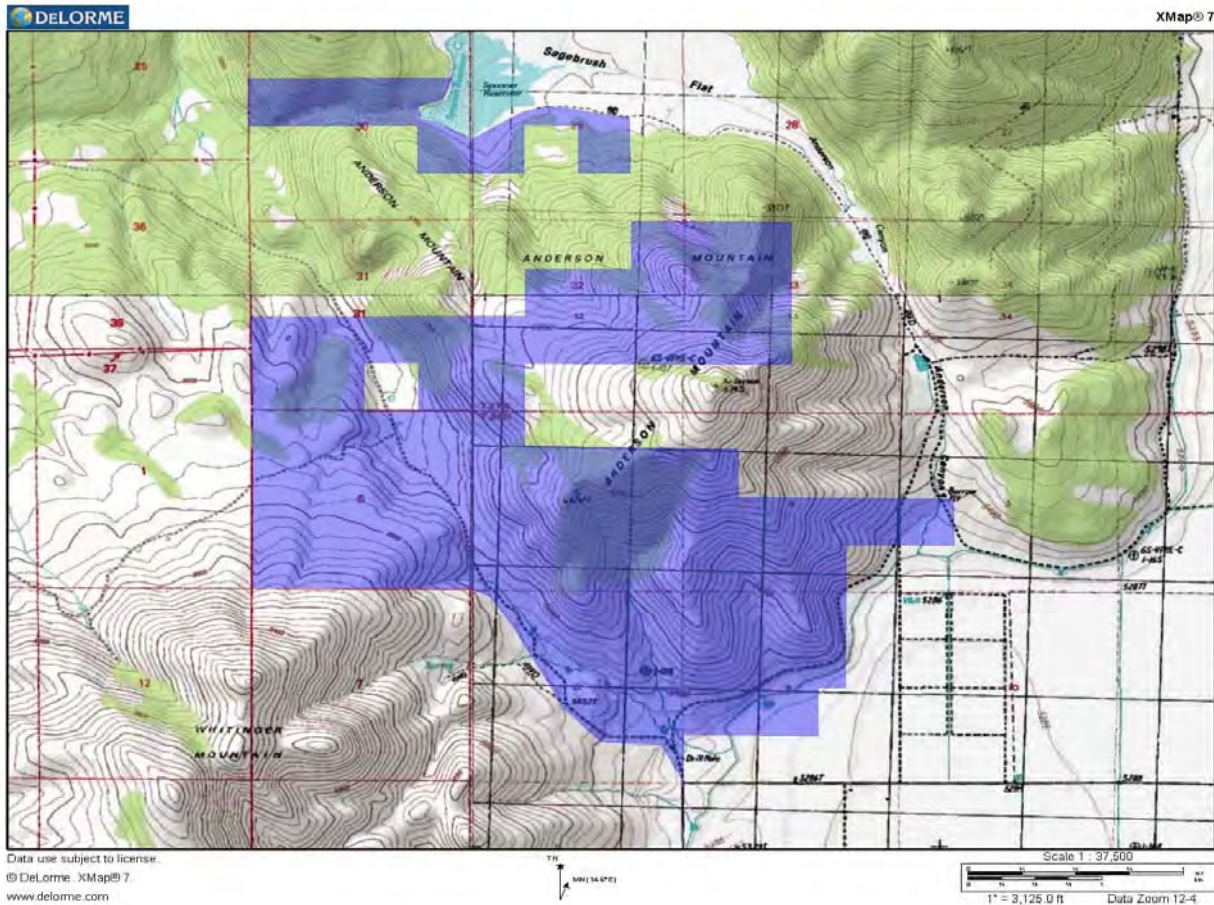
Agency or Agencies: CSSRI

Project Name: Ash Valley IV Watershed Restoration Project

Project Coordinates: N40.9793 W120.6119

Summary of Project: CSSRI, through its partners, will continue to make applications with various agencies to fund treatments on private lands. Project connects the BLM South Ash Valley, CSSRI Ash Valley I, II, III and the CSSRI South Knob projects. Work will consist of removal of invasive juniper through biomass utilization in an effort to reduce hazardous fuel loads and restore the watershed and wildlife habitat. Project will be implemented by the Cooperative Sagebrush Steppe Restoration Initiative partnership and private landowners with the assistance of our funding partners

Project Map:



2018 Lassen County CWPP Work Plan

WUI Area: Hayden Hill DFPZ

Funding: Partially Funded

2018 Implementation

Number of Acres: 1600

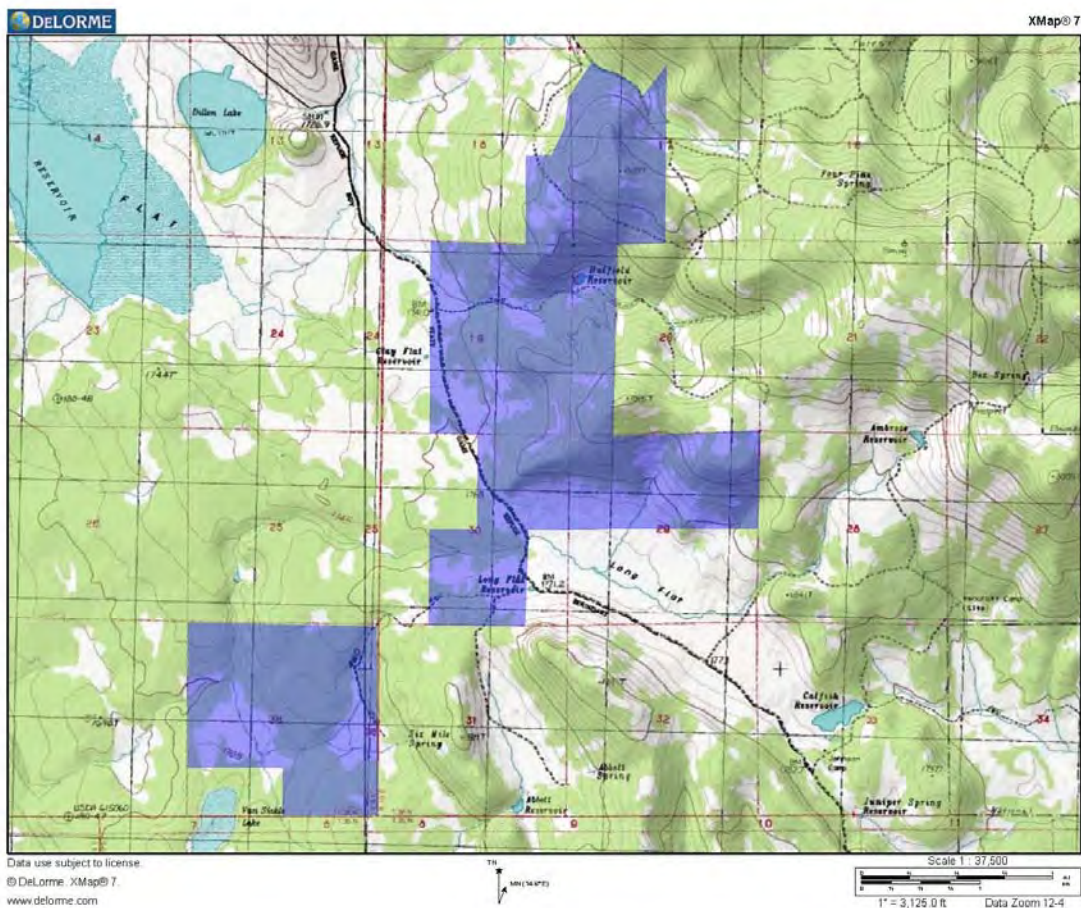
Agency or Agencies: CSSRI, CalFire

Project Name: Hayden Hill Watershed Restoration Projects

Project Coordinates: N40.9339 W120.8553

Summary of Project: CSSRI is assisting private landowners in the Hayden Hill area with watershed and wildlife habitat restoration treatments. A portion of the project is underway and being funded by NRCS and private landowner contributions. CalFire is assisting with hand treatments. Project connects with BLM projects. Work consists of the removal of invasive juniper through biomass utilization in an effort to reduce hazardous fuel loads and restore the watershed and wildlife habitat.

Project Map:



2018 Lassen County CWPP Work Plan

WUI Area: McBride Springs DFPZ

Funding: Planning/Not Funded

2018 Planning

Number of Acres: 743

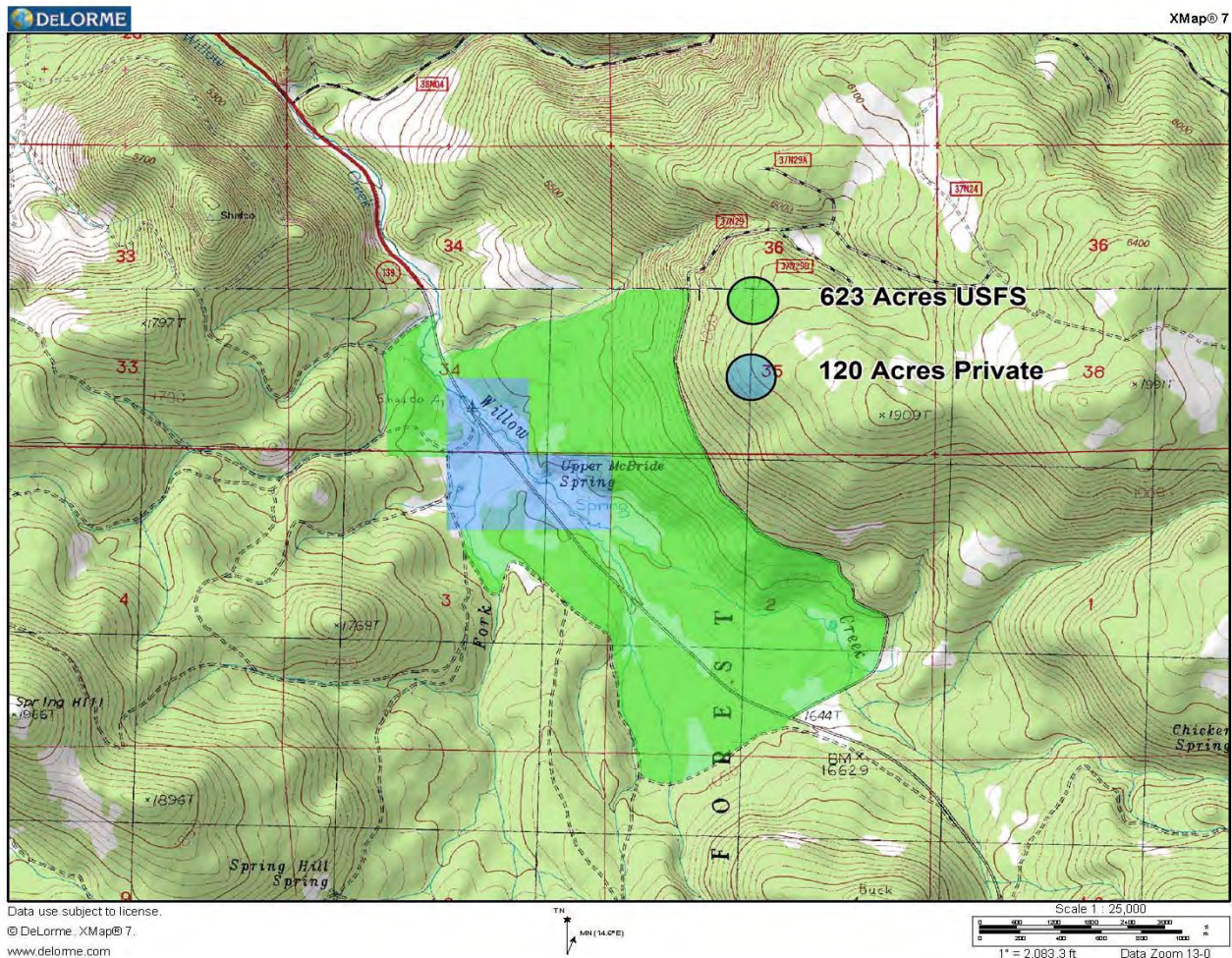
Agency or Agencies: CSSRI, MDF

Project Name: McBride Springs Upland Restoration

Project Coordinates: N40.9919 W120.7978

Summary of Project: CSSRI, through its partners LCFSC & PRCO, and in cooperation with the USFS, will be making applications with various agencies to fund treatments on private and USFS lands. NEPA and CEQA clearance has been underway for some time. In 2011 stream channel restoration work was completed. Planning work has been funded by SNC and CSSRI. Project would restore an important watershed along the Highway 139 corridor. Invasive juniper would be removed through biomass utilization in an effort to reduce hazardous fuel loads and restore the watershed and wildlife habitat. Eastside pine thinning could also occur. Project would be implemented by the Cooperative Sagebrush Steppe Restoration Initiative partnership, with the Pit Resource Conservation District as the lead, and funding partners.

Project Map:



2018 Lassen County CWPP Work Plan

WUI Area: Grasshopper DFPZ

Funding: Partially Funded

2018 Planning

Number of Acres: 2131

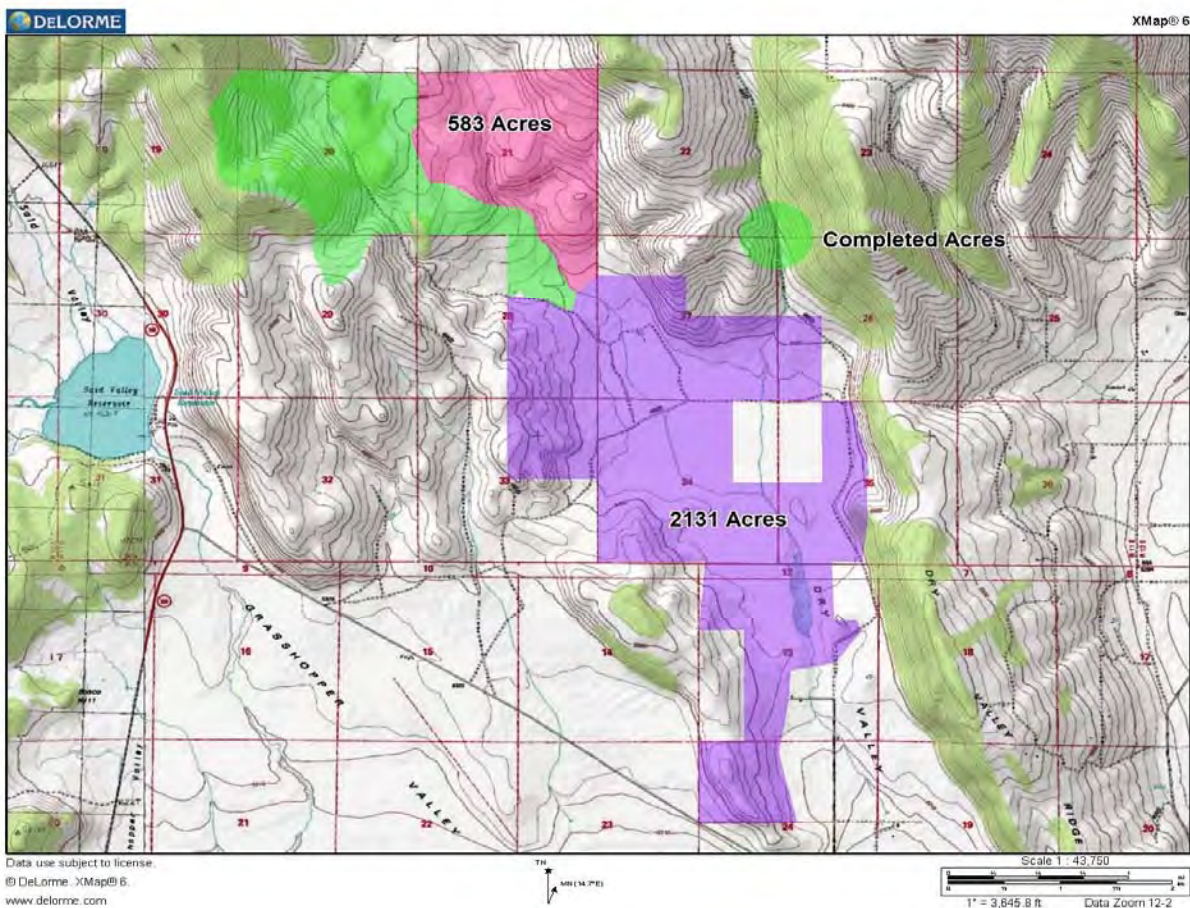
Agency or Agencies: CSSRI

Project Name: McClelland Watershed/Wildlife Habitat Restoration Project

Project Coordinates: N40.9199 W120.7020

Summary of Project: CSSRI, through its partners PRCD & LCFSC, is making applications with various agencies to fund treatments on McClelland Ranch private lands in North Grasshopper Valley. The 583 acre portion of the project identified in the map below was completed in 2012. Project connects with the CSSRI South Knob projects. Work consists of the removal of invasive juniper through biomass utilization in an effort to reduce hazardous fuel loads and restore the watershed and wildlife habitat.

Project Map:



Lassen County Community Wildfire Protection Plan
BLM Eagle Lake Field Office
2018 Annual Work Plan Summary Narrative

The Eagle Lake Field Office currently has Hazardous Fuels Reduction/Ecosystem Restoration, projects planned or ongoing in Lassen County. The purpose and benefits of these projects are community and resource protection, wildlife habitat improvement, rangeland improvement and ecosystem restoration.

Middle Creek Steppe Restoration Project. The BLM proposes to reduce high densities of western juniper within a 6,345 acre project area. This would serve to decrease the probability of large catastrophic wildfires and would promote the reestablishment of lower fire hazard vegetation types dominated by native shrubs, grasses and forbs thereby improving the overall ecosystem health and Sage Grouse Habitat. This project will be conducted across ownership boundaries in cooperation with Private Land Owners, NRCS and the BLM.

Little Cleghorn. The BLM proposes to reduce the density of Jeffrey pine northwest of Eagle Lake. The primary objectives are to reduce the risk of high severity wildfire in the naturally regenerated stand and to increase spacing between trees to reduce competition for resources. The secondary benefits include improving wildlife habitat by increasing the biodiversity of understory vegetation and enhancing forest stand resilience to insects and disease.

Fredonyer Hazardous Fuels Reduction Project. The BLM proposes to reduce high densities of hazardous fuels caused by overly dense stands that are experiencing a high percentage of mortality due to a root rot pathogen, tussock moth defoliation, and extended drought. Approximately 800 acres will be heavily thinned to remove dead and dying trees. Stumps will be treated with sporax following removal to reduce the likelihood of new root rot infections. Following treatment the area will be planted with Jeffrey pine (*Pinus jeffreyi*) that is resistant to the root rot pathogen, tussock moths, and more drought resistant.

Shinn Ranch Juniper Reduction Project. The Shinn Ranch Juniper Reduction project is a **Phase I*** juniper reduction project designed to mitigate fire effects in the proximity of the Shinn Dawn Lek as well as halting juniper encroachment and the resulting degradation of the Sage Steppe habitat in the area. The project will also remove predator perches from the area adjacent to the Lek.

Phase I* Juniper Reduction The BLM Eagle Lake Office is proposing to shift its focus from expensive large scale mechanical reduction of juniper towards a proactive approach of preventing juniper encroachment by removing them with more fiscally viable low impact methods while they are still in Phase I of their spread. This is in hopes of preventing widespread encroachment with habitat degradation and heavy fuel build up into sage brush and sage steppe habitats. The focus will begin in priority sage-grouse habitat with active leks and riparian areas and expand from there.

* Phase I is the early stage of juniper encroachment. It is defined by Miller et al, (2005) as an area where juniper is actively encroaching on sagebrush ecosystems. Juniper crown canopy is less than 10 percent. On dominant trees terminal and lateral leader growth is greater than 10 centimeters (cm) annually. On understory trees terminal leader growth is greater than 10 cm and lateral leader growth is greater than 8 cm annually. Crown lift is absent. The understory is still fully intact. Potential berry production is low and tree recruitment is active. It is common for Phase I sites to occur in patches of small trees up to 16 feet tall on rangelands; some areas can contain one or two single trees.

Below is a chart that briefly describes the three phases of juniper encroachment into sagebrush ecosystems.

Rate of Encroachment	% Canopy Cover	Leader Growth	Understory	Berry Production	Young Tree Recruitment
Phase I	< 10%	> 10 cm terminal > 8 cm lateral	Fully Intact	none	Active
Phase II	10-30%	> 10 cm	Thinning	Moderate to High	Active
Phase III	≥ 30 %	> 10cm terminal < 5 cm on lateral	Sparse to absent	High	Limited

2018 Lassen County CWPP Work Plan

WUI Area: DFPZ

Funding: Partially Funded

2018 Implementation

Number of Acres: 216

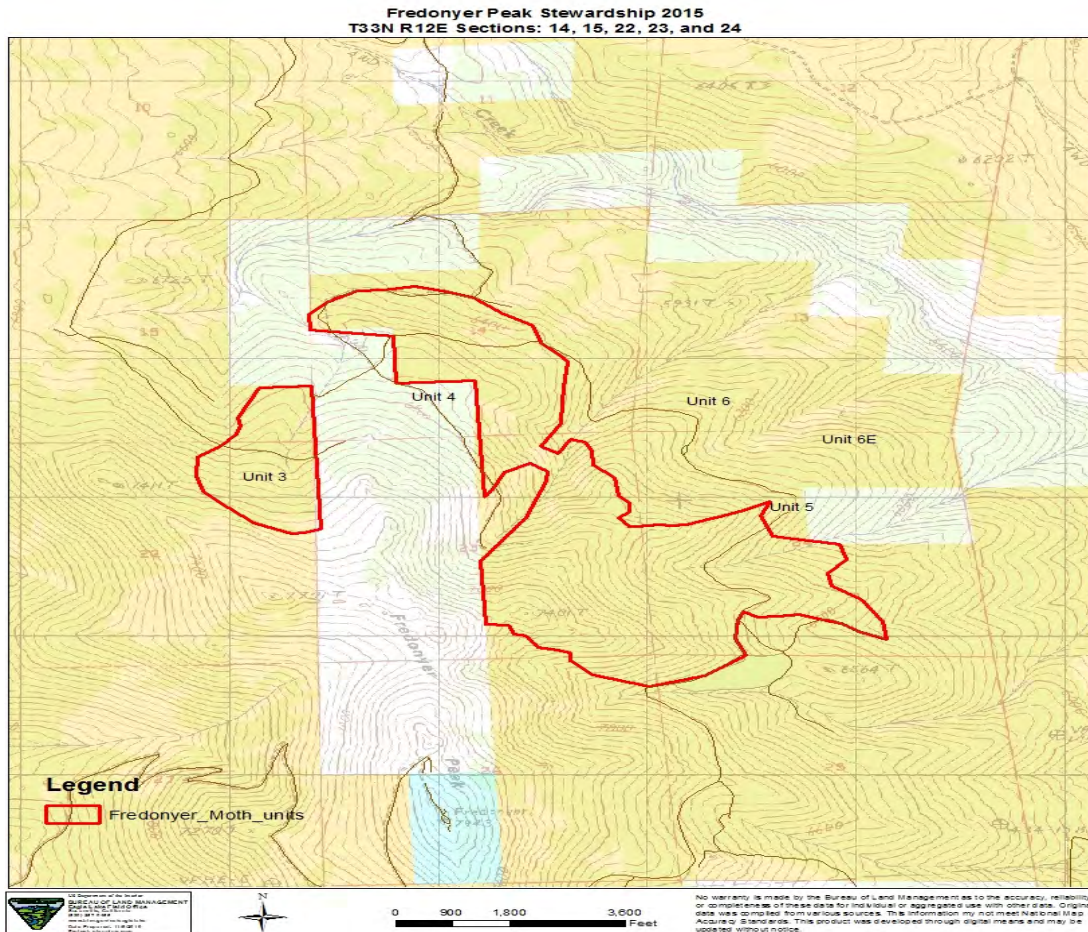
Agency or Agencies: BLM

Project Name: Freydonyer Hazardous Fuels Reduction Project

Project Coordinates: 40.704 -120.588

Summary of Project: Freydonyer Hazardous Fuels Reduction Project. The BLM proposes to reduce high densities of hazardous fuels caused by overly dense stands that are experiencing a high percentage of mortality due to a root rot pathogen, tussock moth defoliation, and extended drought. Approximately 800 acres will be heavily thinned to remove dead and dying trees. Stumps will be treated with sporax following removal to reduce the likelihood of new root rot infections. Following treatment the area will be planted with Jeffrey pine (*Pinus jeffreyi*) that is resistant to the root rot pathogen, tussock moths, and more drought resistant. A contract Has been awarded and work will begin in 2018.

Project Map:



2018 Lassen County CWPP Work Plan

WUI Area: DFPZ

Funding: Funded

2018 Implementation

Number of Acres: 600

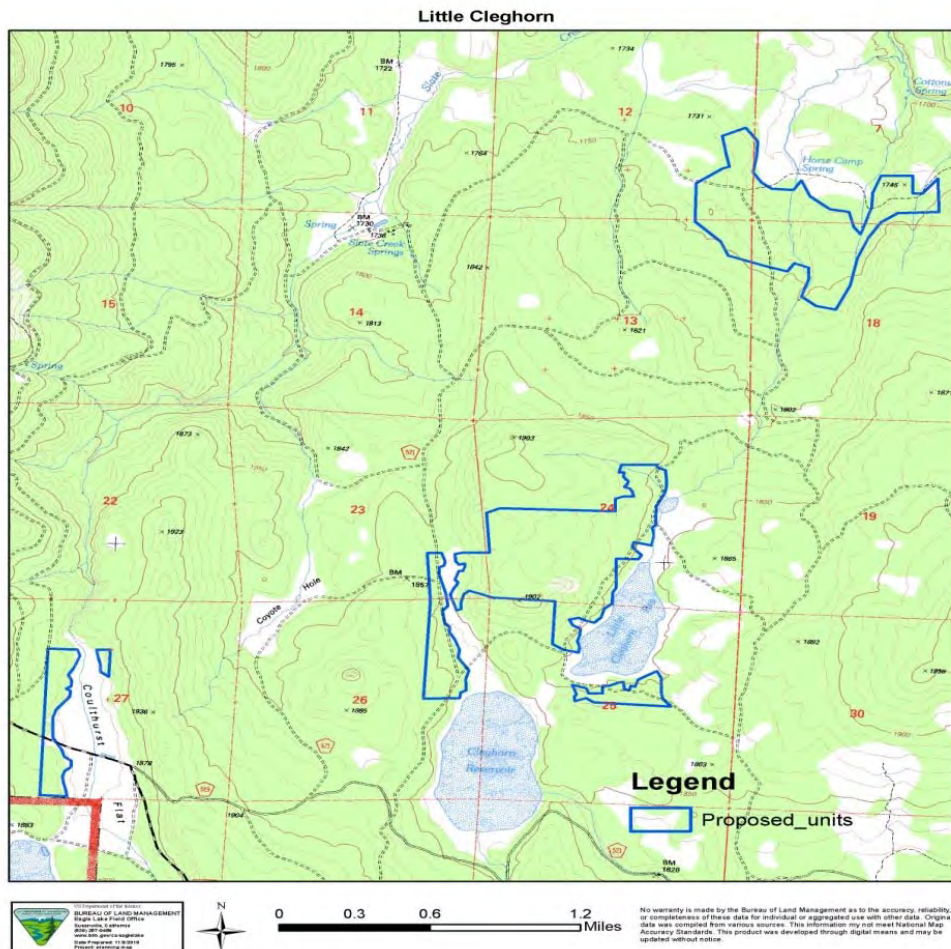
Agency or Agencies: BLM

Project Name: Little Cleghorn

Project Coordinates: 40.78180 120.80095

Summary of Project: The BLM proposes to reduce the density of Jeffrey pine northwest of Eagle Lake (see Map). The primary objectives are to reduce the risk of high severity wildfire in the naturally regenerated stand and to increase spacing between trees. The secondary benefits include improving wildlife habitat by increasing the biodiversity of understory vegetation and enhancing forest stand resilience to insects and disease. The contract was awarded in September and work is scheduled from fall of 2018 to spring of 2020. The primary treatment method will be mechanized thinning with biomass and sawtimber removal.

Project Map:



2018 Lassen County CWPP Work Plan

WUI Area: DFPZ

Funding: Partially Funded

2018 Implementation

Number of Acres: 6345

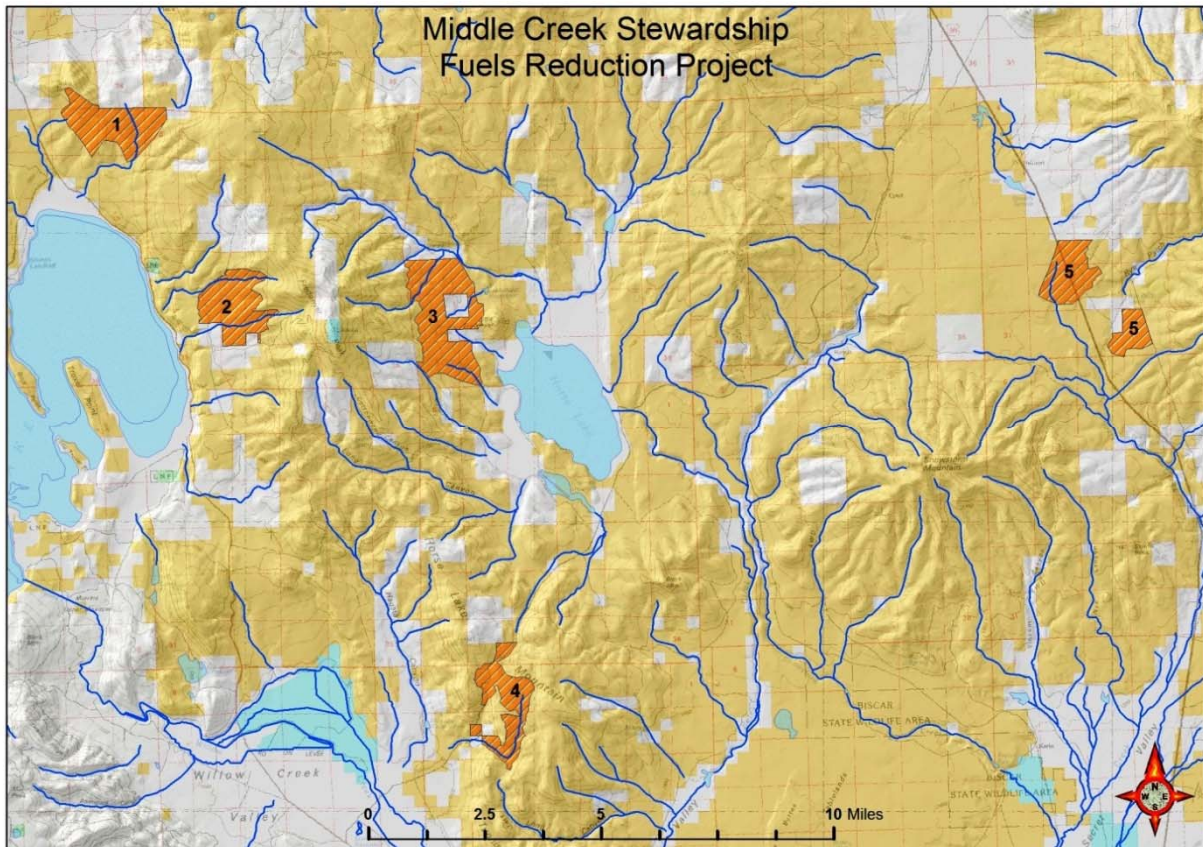
Agency or Agencies: BLM Eagle Lake F.O./NRCS

Project Name: Middle Creek Stepp Restoration Project

Project Coordinates: N40.67842 W120.54355

Summary of Project: The BLM in conjunction with NRCS proposes to reduce high densities of western juniper within an approximately 6,345 acre project area on both federal and private land. The project is designed to decrease the probability of large catastrophic wildfires and improve wildlife habitat. Approximately 1,500 acres has been awarded to contractors and an additional 1,500 acres will be awarded this spring. Work will begin as soon as weather and ground conditions allow.

Project Map:



2018 Lassen County CWPP Work Plan

WUI Area: DFPZ

Funding: Planning/Not Funded

2018 Planning

Number of Acres: 2600

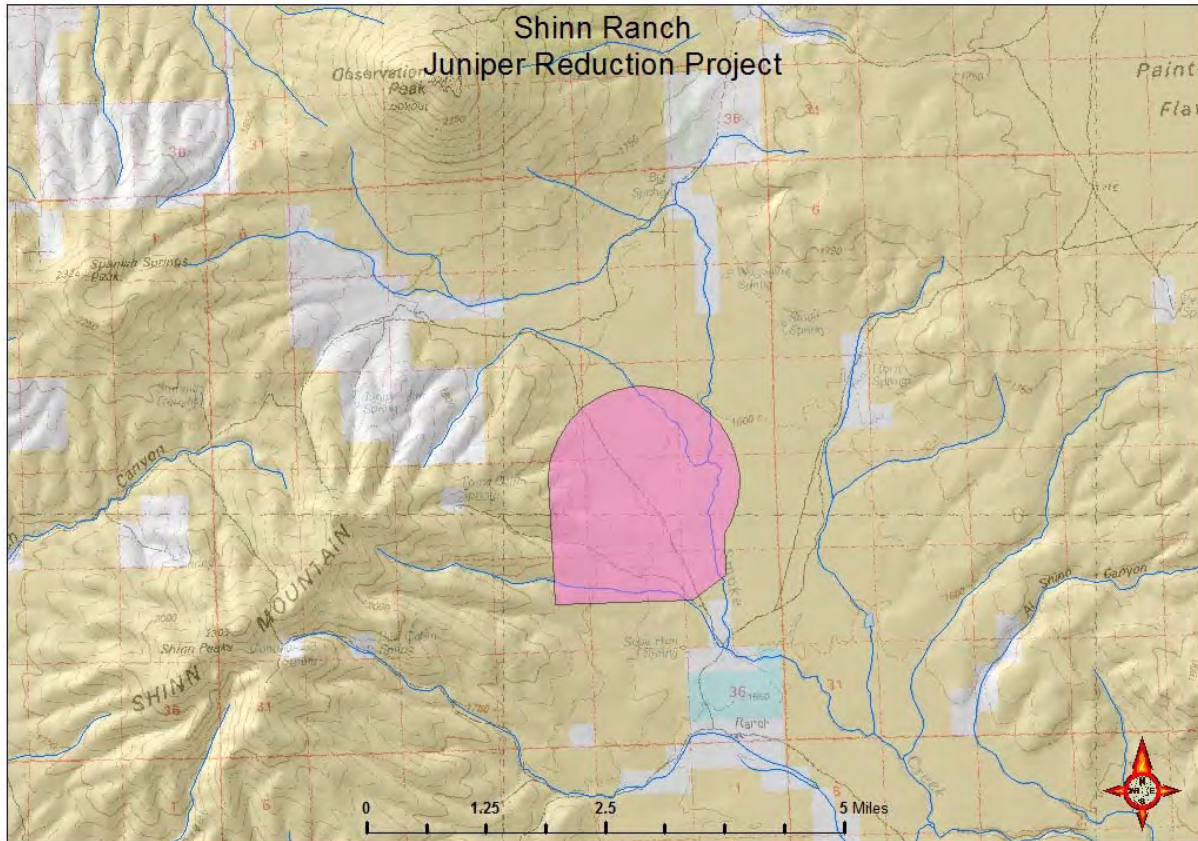
Agency or Agencies: BLM

Project Name: Shinn Ranch Juniper Reduction Project

Project Coordinates: N40.7105 W120.1317

Summary of Project: The SRJR project is designed to mitigate fire effects in the proximity of the Shinn Dawn Lek as well as halting juniper encroachment and the resulting degradation of the Sage Steppe habitat in the area. The project will also remove predator perches from the area adjacent to the Lek.

Project Map:



2018 Lassen County CWPP Work Plan

WUI Area: NA

Funding: Partially Funded

2018 Planning

Number of Acres: NA

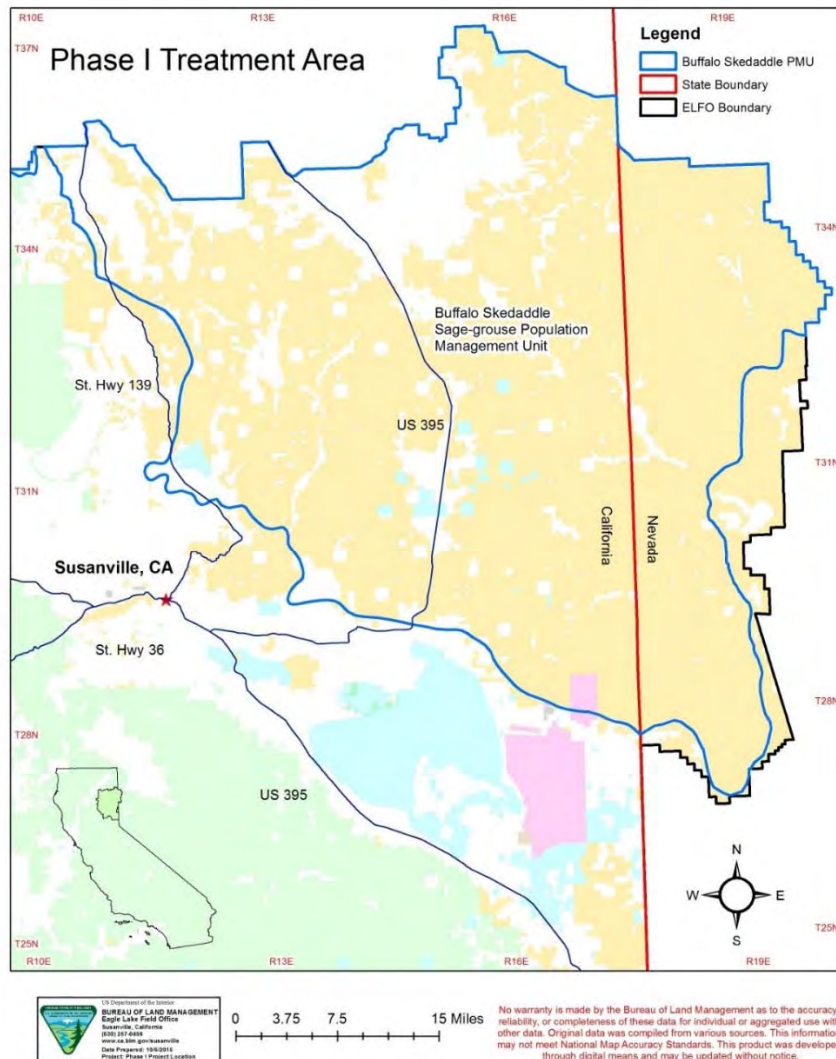
Agency or Agencies: BLM

Project Name: Phase I Juniper Reduction

Project Coordinates:

Summary of Project: The BLM Eagle Lake Office is proposing to shift its focus from expensive large scale mechanical reduction of juniper towards a proactive approach of preventing juniper encroachment by removing them with more fiscally viable low impact methods while they are still in Phase I (see workplan narrative) of their spread. This is in hopes of preventing widespread encroachment with habitat degradation and heavy fuel build up into sage brush and sage steppe habitats. The focus will begin in priority sage-grouse habitat with active leks and riparian areas and expand from there.

Project Map:



2018 Lassen County CWPP Work Plan

WUI Area: DFPZ

Funding: Funded

2018 Implementation

Number of Acres: 40

Agency or Agencies: Bureau of Land Management - Applegate Field Office

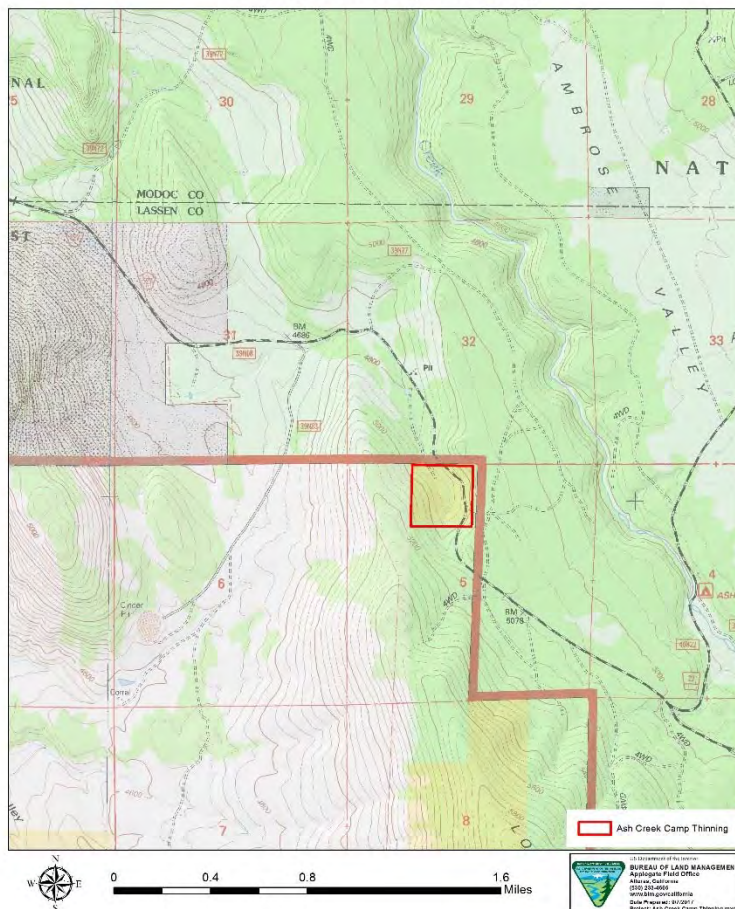
Project Name: Ash Creek Camp Thinning Project

Project Coordinates: 41.16726 -120.84924

Summary of Project: The purpose of the project is to reduce commercially thin an overstocked 40 acre pine/cedar/juniper stand to achieve the desired stocking level (approximate basal area of 80 ft²) and to increase health and vigor of the stand. Thinning would be accomplished by hand (e.g. fallers with chainsaws) or by standard mechanized forestry harvesting equipment including rubber and or tracked skidders, feller bunchers, forwarders and medium to small dozers. The the contract will be awarded sometime this spring and operations would likely begin in May or June. Harvesting operations are anticipated to take no more than three weeks to complete. The unit is located near the town of Adin, California. Slash generated from harvesting activities will be piled and burned when conditions permit burning operations to commence.

Project Map:

Ash Creek Camp Thinning



2018 Lassen County CWPP Work Plan

WUI Area: DFPZ

Funding: Partially Funded

2018 Planning

Number of Acres: 2048

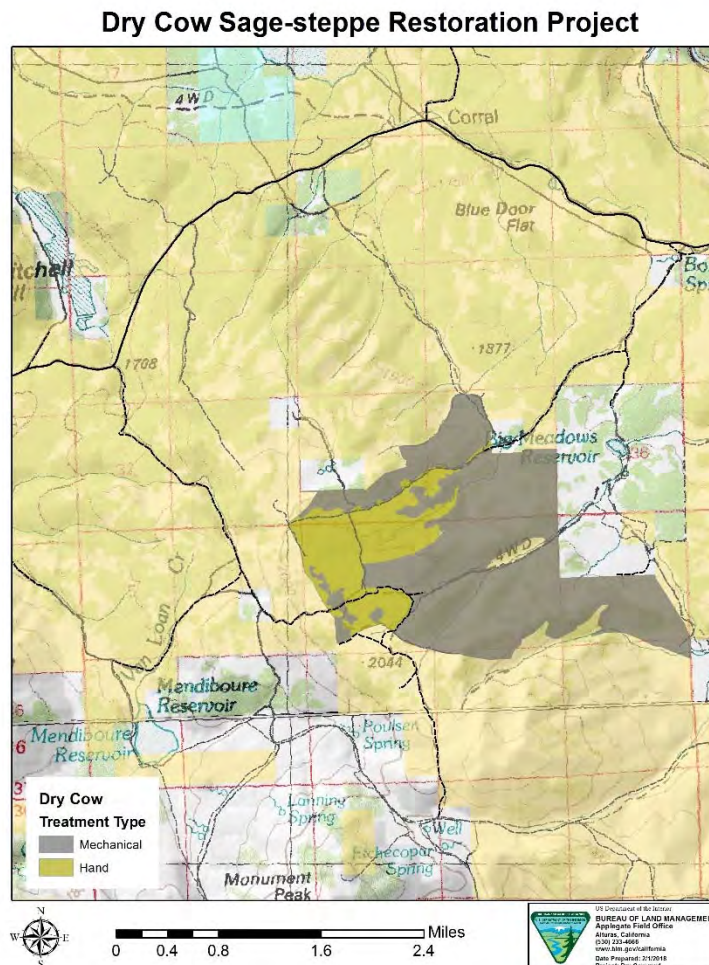
Agency or Agencies: Bureau of Land Management - Applegate Field Office

Project Name: Dry Cow Sage-steppe Restoration Project

Project Coordinates: 41.019237 -120.36189

Summary of Project: The Dry Cow sage-steppe restoration project is a joint project between the BLM and NRCS. The project area consists of areas designated for mechanical treatment (i.e. feller-bunchers) and hand treatment (i.e. chainsaws). Approximately 480 acres will be treated by hand and 1594 acres will be treated mechanically. During the next few months, the BLM will be preparing a DNA for the project under the 2018 Juniper Programmatic EA that was prepared for the purposes of treating juniper in sage grouse habitat and non-sage grouse habitat in portions of Modoc, Lassen, Siskiyou, and Washoe counties. Currently, the BLM is planning on treating all of the areas designated for hand treatment. This treatment will utilize a combination of lop-and-scatter and cut-and-pile. Areas that will be cut-and-piled will be burned using agency fire personnel when conditions are appropriate to do so.

Project Map:



2018 Lassen County CWPP Work Plan

WUI Area: DFPZ

Funding: Partially Funded

2018 Implementation

Number of Acres: 1460

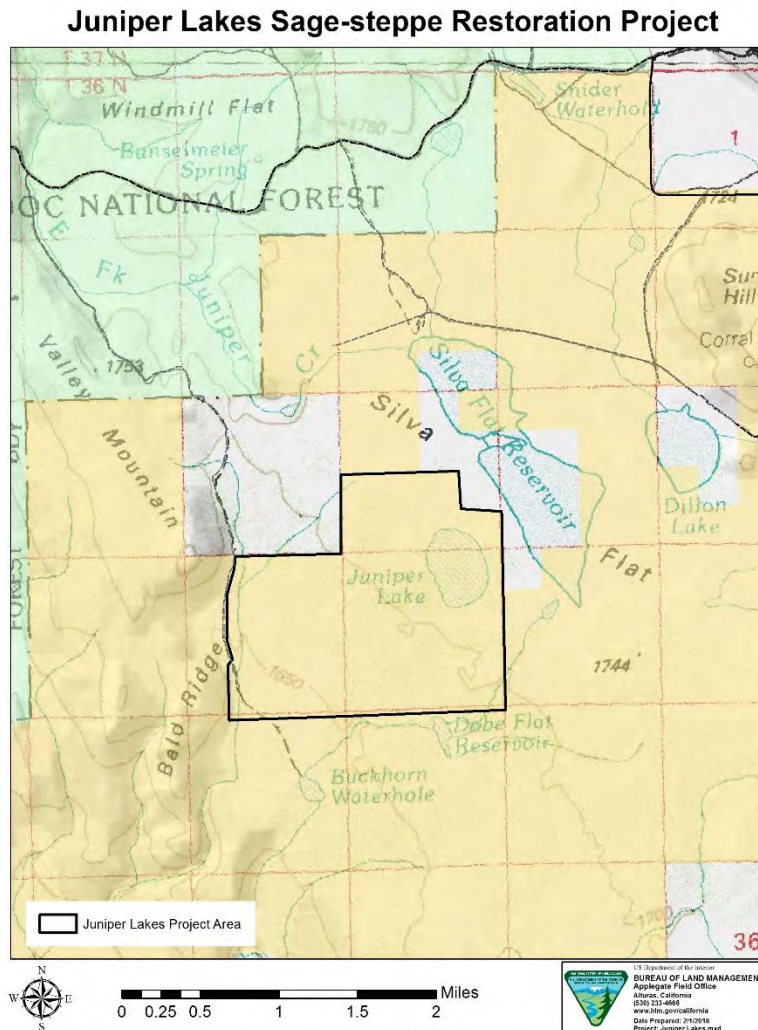
Agency or Agencies: Bureau of Land Management - Applegate Field Office

Project Name: Juniper Lakes Sage-steppe Restoration Project

Project Coordinates: 40.94428 -120.92777

Summary of Project: The Juniper Lakes Sage-steppe Restoration project is an on-going project that is located approximately 20 miles southwest of Adin, California. The purpose of the project is to reduce juniper densities in designated Greater sage-grouse habitat to improve nesting, brood-rearing, and winter habitat. The project consists of 1460 acres of lop-and-scatter and cut-and-pile. Piles created during the treatment phase will be burned using agency personnel during the fall or winter when conditions allow and road access is sufficient to permit access to the project area.

Project Map:



2018 Lassen County CWPP Work Plan

WUI Area: Spalding

Funding: Planning/Not Funded

2018 Planning

Number of Acres: Approx. 5,000

Agency or Agencies: USFS

Project Name: Acer Project

Project Coordinates: 40.645115 120.881462

Summary of Project: The desired conditions for the Acer Project area include: 1) healthy forest conditions that are characterized by more open forested stands dominated by fire-resilient tree species, reduced surface fuel loads and ladder fuels where periodic low-intensity surface fires can be re-introduced and where wildfires can be safely fought, 2) forest areas with reduced tree densities that decrease risk of mortality from insects, drought, and disease, 3) functioning aspen, meadow and riparian systems which contribute to landscape biodiversity, and 4) cost effective treatments that contribute to community stability. The thinning, piling, and/or chipping along County Road A1 will improve visibility and safety while driving along the road, and improve the ingress/egress route for the community of Spalding if a wildfire were to occur in the area. The proposed action will be developed in winter of 2018.

Project Map:



2018 Lassen County CWPP Work Plan

WUI Area: Susanville

Funding: Partially Funded

2018 Implementation

Number of Acres: 4,669

Agency or Agencies: USFS, LCFSC

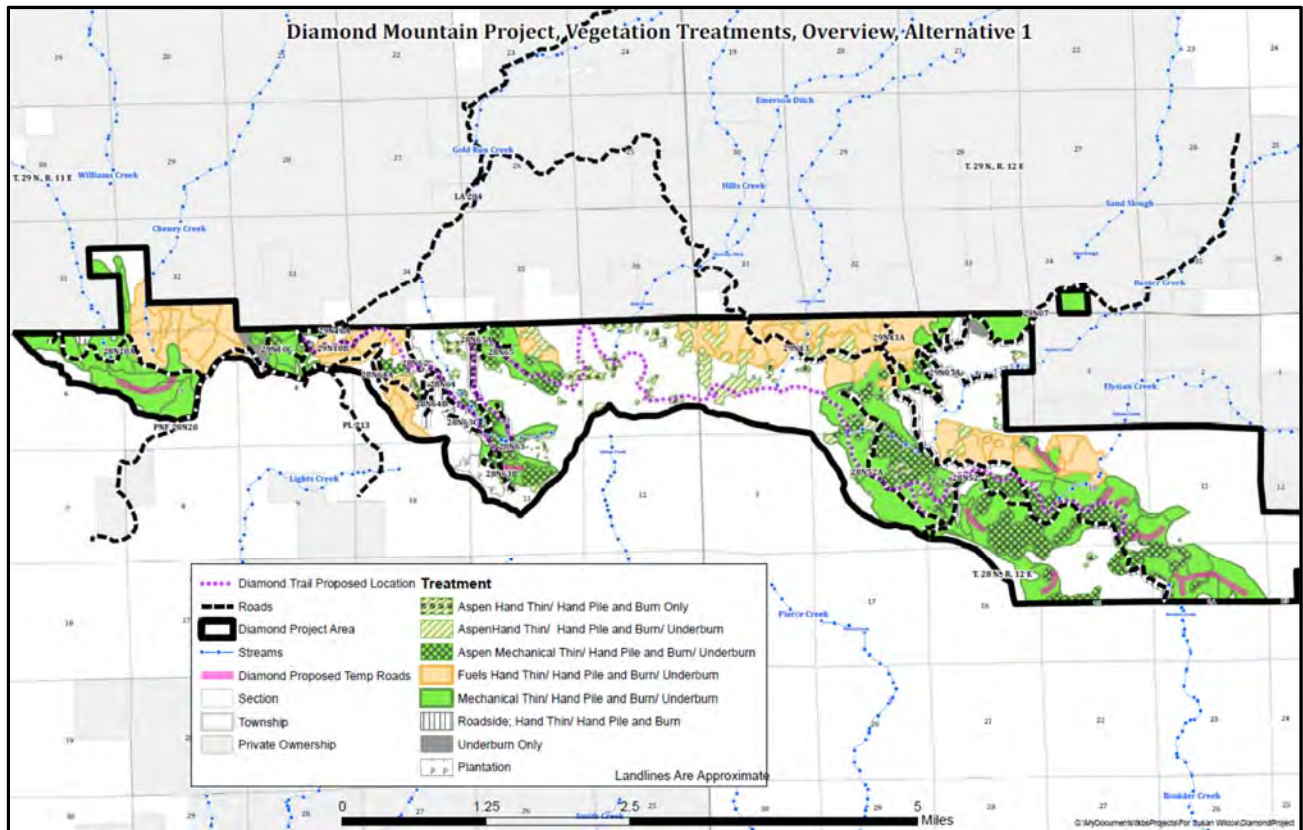
Project Name: Diamond Mountain Watershed Restoration and WUI Project

Project Coordinates: N40.3125 W120.6833

Summary of Project: The Eagle Lake RD will create fuel breaks and implement area treatments on FS lands to provide protection from wildfire around and near the communities of Susanville, Janesville and outlying residences in the proximity of FS lands in the Diamond Mountain Area. The project was developed to address fuels and the watershed holistically. Approximately 2,707 acres of mechanical and 1,931 acres of hand thinning treatments will be implemented.

Underburning treatments will occur once mechanical and hand treatments are completed. Project objectives include creating heterogeneity, reducing tree densities, enhancing riparian, hardwood, and meadow systems, and the reduction of surface, ladder, and canopy fuels to reduce fire behavior. The Decision Notice was signed on 1/19/18. The Eagle Lake District is collaborating with the LCFSC to look at possible grant opportunities in order to fund portions of the project implementation on private and public lands.

Project Map:



2018 Lassen County CWPP Work Plan

WUI Area: Susanville

Funding: Funded

2018 Implementation

Number of Acres: 534

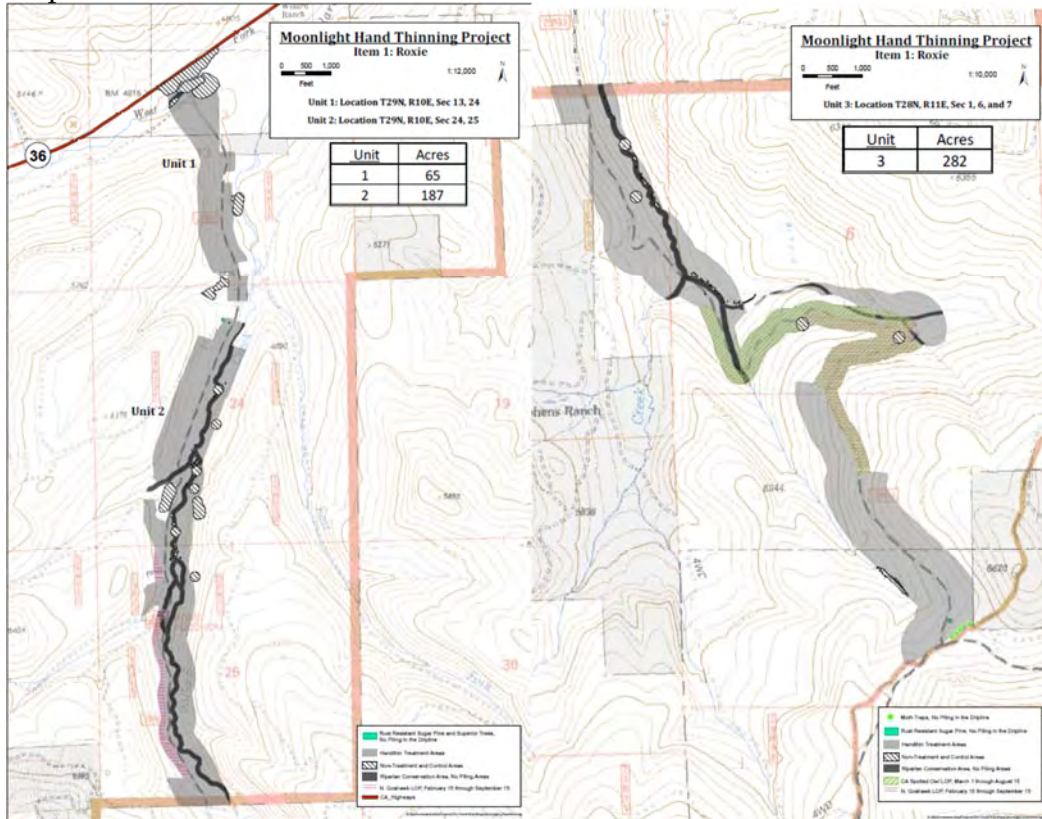
Agency or Agencies: USFS

Project Name: Moonlight Hand Thinning Project

Project Coordinates: N40.355875 W120.808905

Summary of Project: Hand thinning of conifers and brush, and hand piling the natural and activity generated surface fuels along Forest Road 29N03 for the purpose of removing ladder fuels and increasing canopy base heights within the treated stands. Due to steep slopes, erosive soils, and canopy-cover restrictions, fuel reduction treatments within the project area would be limited to hand thinning treatments. All trees 6 inches diameter breast height (DBH) and less, and all brush will be cut within a 500 foot buffer along designated roads and within a 200 foot buffer along designated roads within owl and goshawk PACs. Fire suppression efficiency would be improved within the treatment areas by creating an environment where wildfires would burn at lower intensities and where firefighting production rates would be increased because less ground fuels and small diameter trees would need to be cleared for fireline construction and backfiring operations. Implementation began in the Fall of 2017. Hand thinning and piling has been completed on approximately $\frac{3}{4}$ of the project. Pile burning will begin in the winter of 2018.

Project Map:



2018 Lassen County CWPP Work Plan

WUI Area: Spalding

Funding: Partially Funded

2018 Implementation

Number of Acres: 660

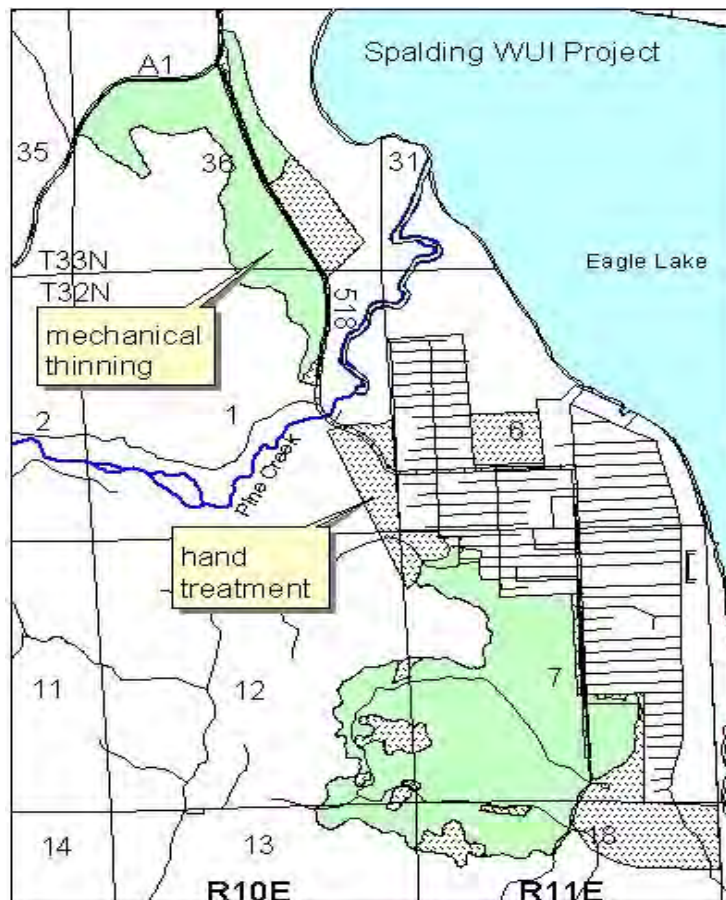
Agency or Agencies: USFS

Project Name: Spalding WUI Project

Project Coordinates: 40.680917 120.796104

Summary of Project: The Spalding WUI Project timber sale and some hand thinning and pile burning activities were completed around 2007-2008. The objective for the current thinning activities is to remove small diameter trees and brush (ladder fuels) that are remaining within the units post timber sale harvest. The thinning treatments will reduce the probability of torching and spot fires, and reduce the potential for mortality within the residual trees in the stand during future prescribed burning operations and/or during a wildland fire. The thinning, hand piling, and/or chipping along County Roads A1 and 518 will serve as future burn preparation in some areas, improve visibility and safety while driving along the roads, and improve the ingress/egress route for the community of Spalding if a wildfire were to occur in the area. The majority of thinning has been completed along both roads. Hand thinning will continue this spring. Pile burning will continue in the winter of 2018.

Project Map:



2018 Lassen County CWPP Work Plan

WUI Area: DFPZ

Funding: Funded

2018 Implementation

Number of Acres: 5300

Agency or Agencies: Modoc National Forest

Project Name: Ash Timber Sale

Project Coordinates: 41.155945 120.816693

Summary of Project: The purpose of this project is to promote a health, resilient forest and protect life and property in the WUII. This project is also designed to:

1. Restore stand structure and species composition to conditions more resilient to periodic drought and disturbance that could be maintained, over the long term, with prescribed fire.
2. Provide for long term wildlife habitat needs by increasing forest health and resiliency and reducing the risk of adverse impacts from wildfire.
3. Restore the sage steppe ecosystem and associated vegetative communities to desired habitat conditions reflecting ecological processes that existed pre-European settlement.

Project Map:



2018 Lassen County CWPP Work Plan

WUI Area: DFPZ

Funding: Funded

2018 Implementation

Number of Acres: 1500

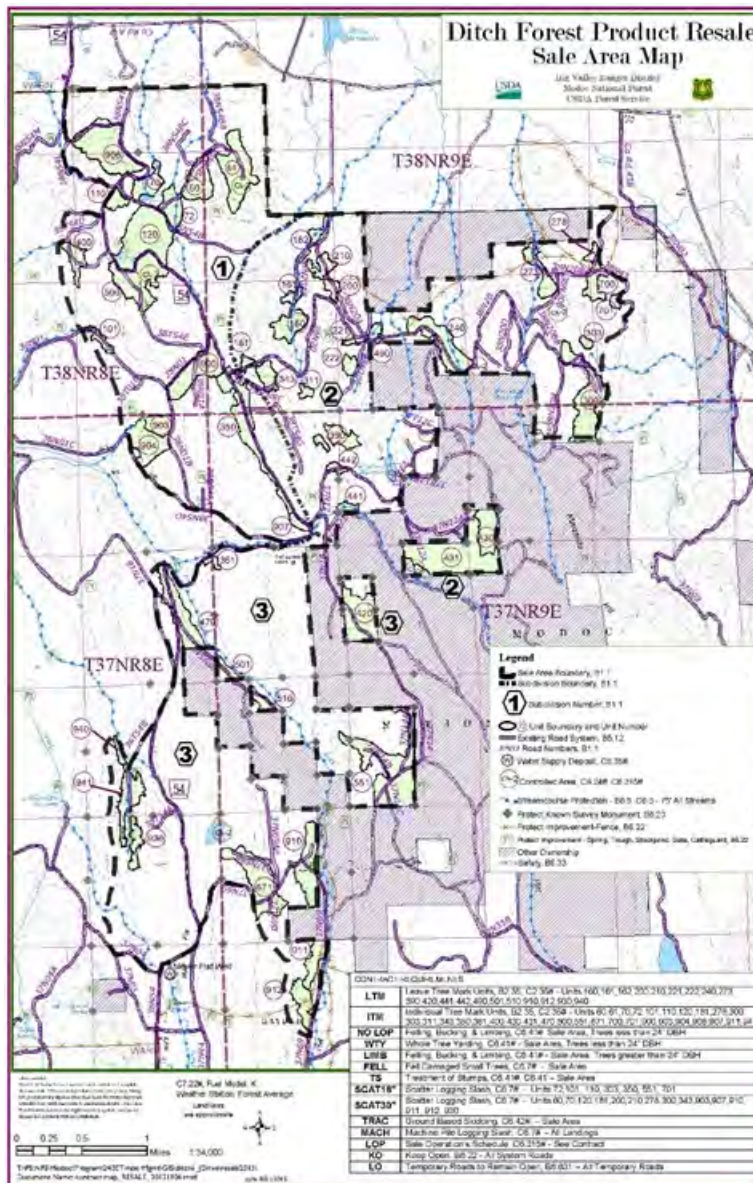
Agency or Agencies: Modoc National Forest

Project Name: Ditch Project

Project Coordinates: 41.08.09 120.9694

Summary of Project: This is a multi-product timber sale that has approximately 12,500 green tons within the sale area to be removed for forest health reasons.

Project Map:





Plumas National Forest Integrated Vegetation Management Goal and Strategy

The Plumas National Forest vegetation management program is integrated with the fire and ecosystem management programs to reduce the risk of wildfire to communities in the wildland-urban interface while also modifying fire behavior over the broader landscape to reduce the threat of catastrophic fires to wildlife and watersheds. This program integration enables the Plumas National Forest to reduce hazardous fuels, provide commercial products, restore healthy, resilient forests, and coordinate vegetation management activities with those of private landowners.

Attaining the goal involves linking past and future fuel treatments across the landscape to take advantage of natural and human made barriers, utilizing naturally ignited fires when possible to reduce fuels on untreated portions of the landscape, as well as collaborating with local partners to accomplish management priorities. Some of these priorities include:

- Sustaining the economic health of local communities.
- Reducing fuels within and around communities in the wildland-urban interface.
- Reducing fire hazards on lands near key community infrastructure such as municipal watersheds, and power, water, and communication systems.
- Reducing the threat of catastrophic fire on habitat for designated threatened, endangered, and sensitive species
- Addressing forest health problems, such as insect and disease infestations.

The Plumas National Forest will annually share its long range plan with our local partners to provide for a collaborative effort towards reaching our similar goals.



2018 Lassen County CWPP Work Plan

WUI Area: Milford/Doyle/Constantia

Funding: Partially Funded

2018 Implementation

Number of Acres: 3596

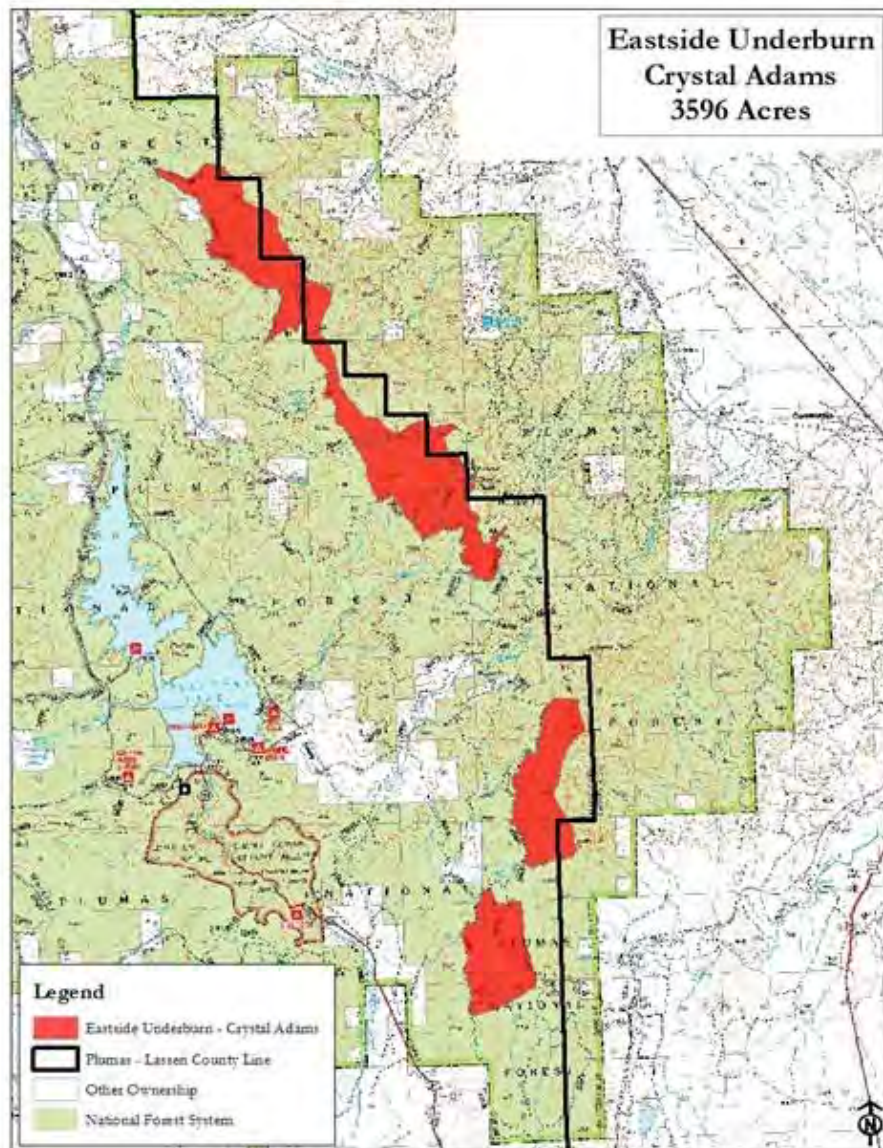
Agency or Agencies: USFS-PNF

Project Name: Eastside Underburn - Crystal Adams

Project Coordinates: -120.139 39.9447

Summary of Project: This portion of the Eastside underburn project lies mostly on the escarpment, near the Plumas/Lassen county line. The purpose of this project is to enhance resource protection from catastrophic wildfire, improve forest health, and to continue to restore fire adapted ecosystems in the eastside pine forest type.

Project Map:



2018 Lassen County CWPP Work Plan

WUI Area: Milford

Funding: Planning/Not Funded

2018 Planning

Number of Acres: 4270

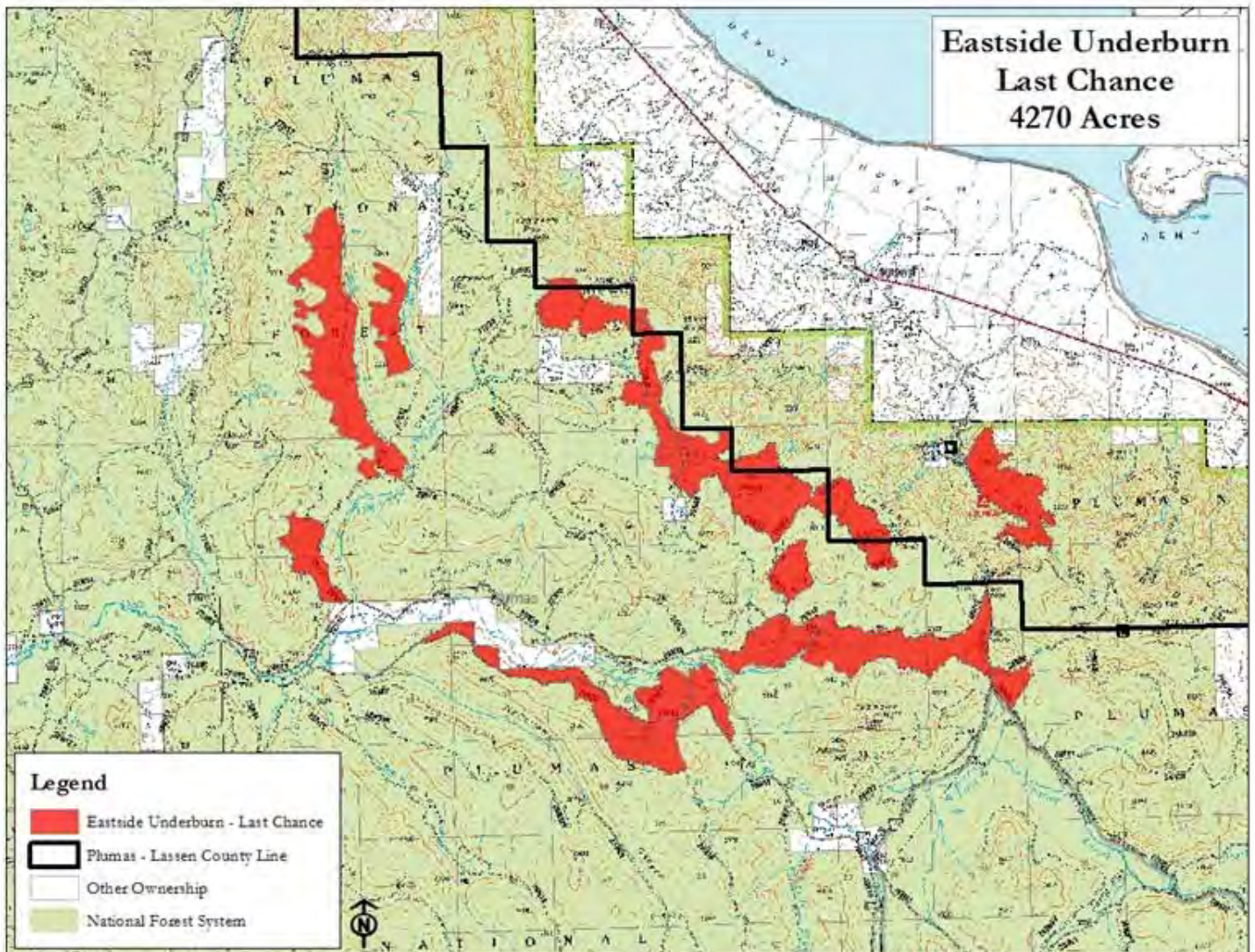
Agency or Agencies: USFS-PNF

Project Name: Eastside Underburn - Last Chance

Project Coordinates: -120.3958 40.13902

Summary of Project: This portion of the Eastside underburn project lies on top as well as on the east and west sides of the escarpment, near the Plumas/Lassen county line. The purpose of this project is to enhance resource protection from catastrophic wildfire, improve forest health, and to continue to restore fire adapted ecosystems in the eastside pine forest type.

Project Map:



2018 Lassen County CWPP Work Plan

WUI Area: Janesville/Milford

Funding: Partially Funded

2018 Implementation

Number of Acres: 2351

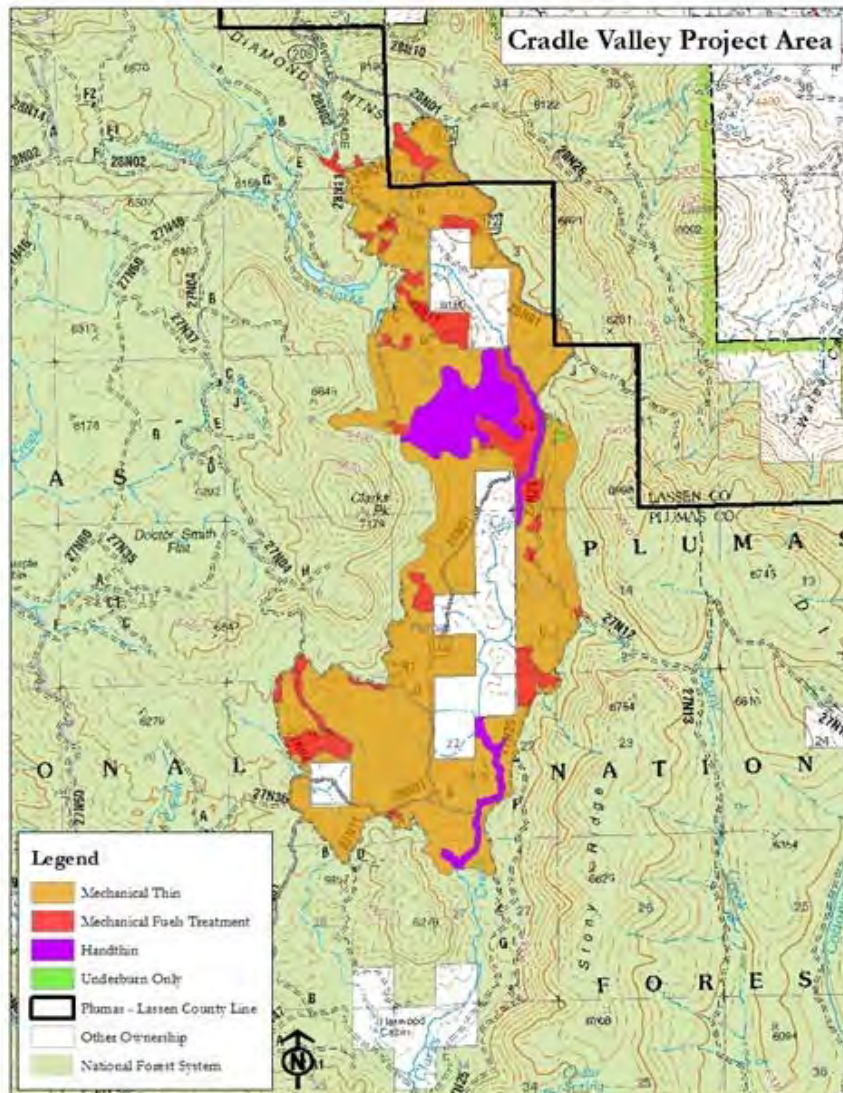
Agency or Agencies: USFS-PNF

Project Name: Cradle Valley

Project Coordinates: -120.5034 40.23274

Summary of Project: The Cradle Valley Project utilizes mechanical thinning (timber harvest), mechanical fuels treatments (mastication and grapple piling), hand thinning, and underburning. The entire project area is available for underburning. The project was designed using a collaborative process between the Plumas National Forest, the Susanville Indian Rancheria, and various other groups and individuals. Implementation of mechanical thinning, mechanical fuels treatments, and hand thinning could start as early as summer 2018. Any burning would be in the years following.

Project Map:



2018 Lassen County CWPP Work Plan

WUI Area: Susanville

Funding: Planning/Not Funded

2018 Planning

Number of Acres: 14

Agency or Agencies: LCFSC/CAL FIRE

Project Name: Cheney Vegetation Fuel Reduction Project

Project Coordinates: N40.2423 W120.1030

Summary of Project: Summary of Project: CAL FIRE is planning for a potential vegetation fuel reduction project in conjunction with LCFSC and, hopefully, with the City of Susanville and other land owners. The main purpose of the project is to establish a vegetation fuel reduction zone along portions of Cheney Creek Road, other unnamed roads and on a number of land owners. The treatment method should largely consist of hand cutting and piling of the vegetation. Treatment of the vegetation piles will most likely consist of chipping and scattering the material on site at any time of the year utilizing a towable chipper where feasible. However, the piles may be burned when conditions are safe where the use of a towable chipper is not feasible.

Project Map:



2018 Lassen County CWPP Work Plan

WUI Area: Johnstonville

Funding: Planning/Not Funded

2018 Planning

Number of Acres: 20

Agency or Agencies: LCFSC/CAL FIRE

Project Name: Diane Vegetation Fuel Reduction Project

Project Coordinates: N40.2153 W120.3531

Summary of Project: Summary of Project: CAL FIRE is planning for a potential vegetation fuel reduction project in conjunction with LCFSC and, hopefully, with other landowners. The main purpose of the project is to establish a fuel reduction zone passing through and/or bordering Diamond Crest Rancho Sub Division and a number of other landowners. The treatment method should largely consist of hand cutting and piling of the vegetation. Treatment of the vegetation piles will most likely consist of burning when conditions are safe. However, if available, a towable chipper may be used where feasible at any time of the year to chip the piles and scatter the material on site.

Project Map:

