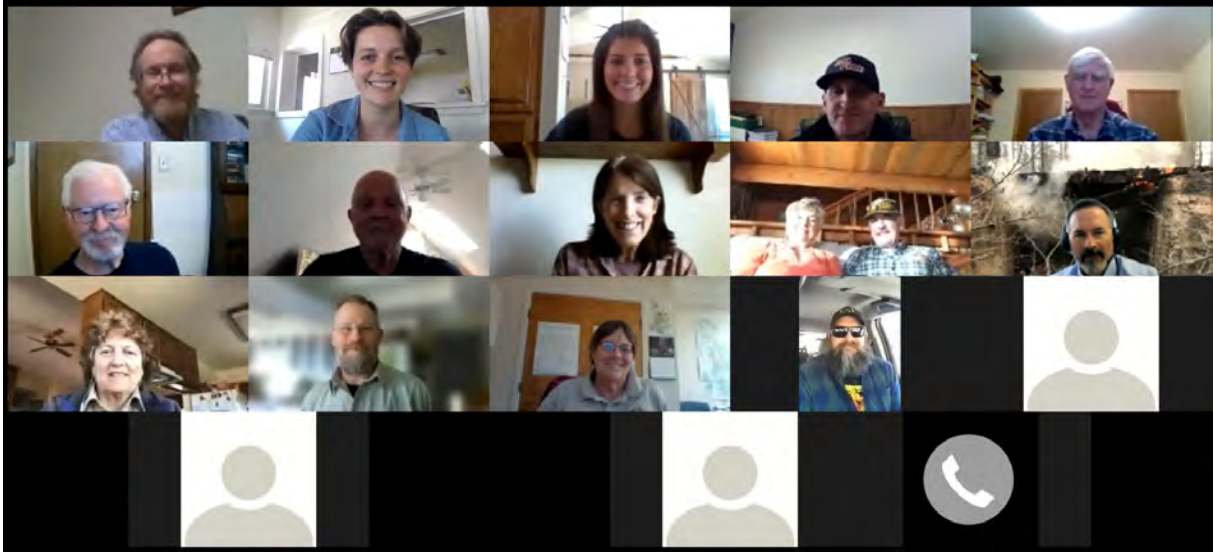


Lassen County Community Wildfire Protection Plan 2021 Work Plan

Lassen County



December 2021



Representatives of resource, fire planning and prevention interests met on April 6, 2021 to develop the Lassen County Community Wildfire Protection Plan, 2021 Work Plan. The process began in January of 2021, through online collaboration and reporting, and it was completed in December of 2021.

Table of Contents

Priority Private Land Projects Ranking List	v
2021 Wildland Urban Interface Map (Note for best viewing of this map go to lassenfiresafecouncil.org and select CWPP >WUI Map)	1
2015 CWPP Base Map (Note for best viewing of this map go to lassenfiresafecouncil.org and select CWPP >Base Map)	2
Lassen County Fire Safe Council, Inc. Narrative	3
Dyer Mountain	4
Thompson Peak Initiative	5
South Eagle Lake	6
Little Valley	7
Big Valley Mountain	8
Doyle	9
Diamond Mountain	10
Spalding	11
Madeline	12
Ash Valley III	13
McBride Springs	14
Letter Box	15
McClelland	16
Hog & Sheep Firs Reforestation	17
Ash	18
CAL FIRE	
Cheney Creek	19
Bureau of Land Management, Applegate Field Office	
Ash Creek	20
Dry Cow Hand Only	21
Dry Cow Mechanical	22
AGFO Juniper Maintenance	23
Letter Box	24
Ryegrass Swale Sage-steppe Restoration	25
South Graves Sage-steppe Restoration	26
Stony Breaker Juniper Reduction	27
Thomas Creek Sage-steppe Restoration	28
Upper Tuledad Sage-steppe Restoration	29
Westside Sage-steppe Restoration	30
Acer	31

Lassen National Forest, Eagle Lake Ranger District	
Harvey	32
Moonlight-Fredonyer	33
Hog Fire Salvage and Rehabilitation	34
Moonlight-Roxie	35
Whaleback Fire Salvage	36
Plumas National Forest	
Bootsole	37
WM Beaty & Associates	
Homer THP Fuel Break	38
Westwood Community Fuel Break	39
Natural Resources Conservation Service	
Roberts Ranch	50
Plumas National Forest Narrative	
Eastside Under Cradle Valley	51
Eastside Under Burn Last Chance	52
Eastside Under Burn Crystal Adams	53
Sierra Pacific Industries	
Mountain Meadows 2	54
Office View 2	55
V Line Dyer	56

CalFire Lassen Modoc Unit Fire Plan

Incorporated into the Lassen County CWPP 2021 Work Plan by Reference

2021 CWPP Work Plan Private Land Priority Projects Ranking

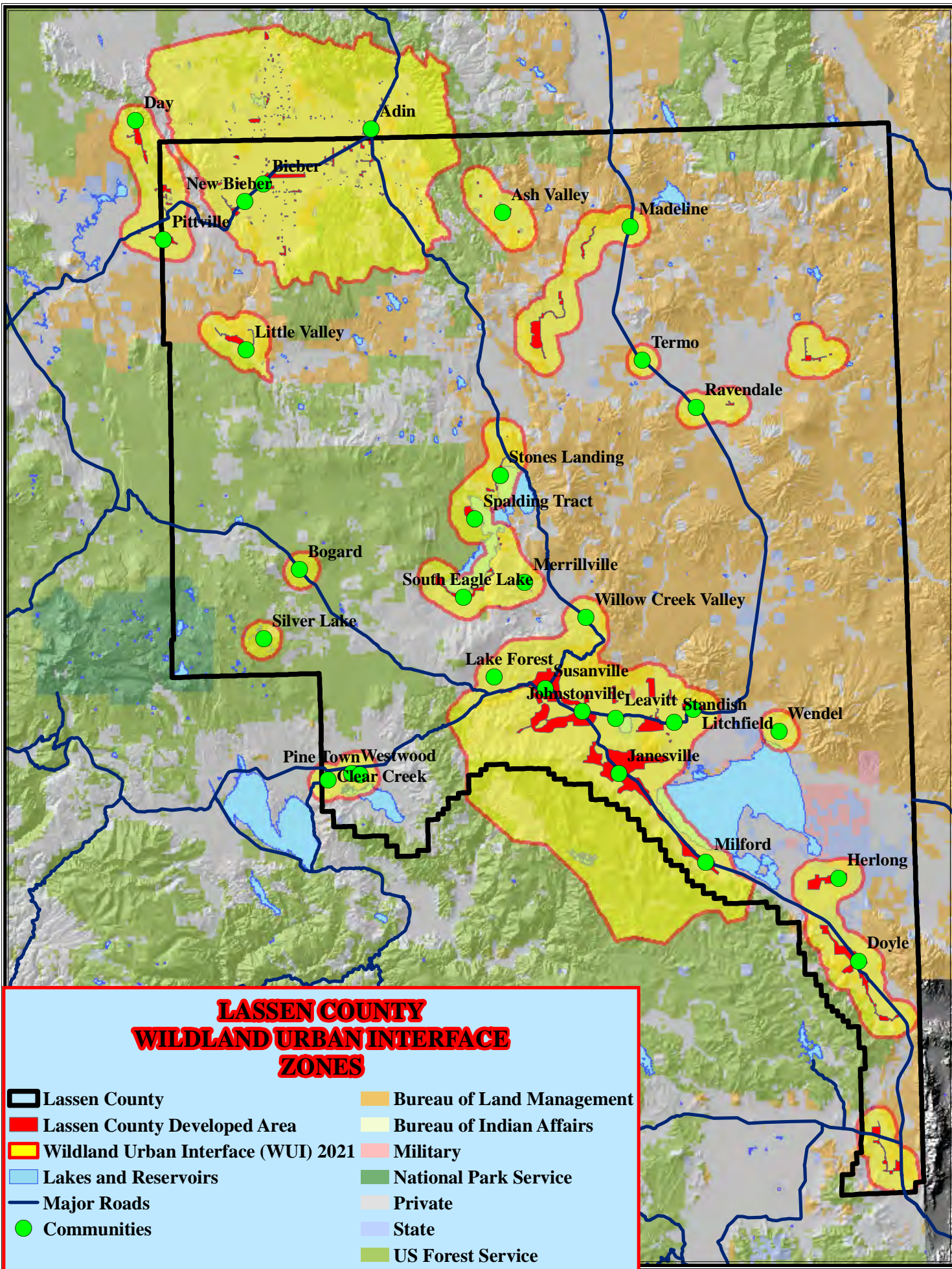
The Lassen County CWPP Work Plan ranks private land projects in a collaborative process that considers:

1. Guidelines recommended by the National Association of State Foresters, which state *“Projects are prioritized based on the probability of success, community involvement and collaboration, and sustainability”*¹, and;
2. Calfire, Lassen Modoc Unit ranking criteria, and;
3. Input from all Annual CWPP Work Plan participants

Annual ranking is adopted by consensus.

2021 Lassen County CWPP Ranking Worksheet														
CWPP Ranking	Project	Community Involvement	Probability of Success	Collaboration	Sustainability	Match	% of Match Available	Total CWPP Criteria Points	CAL FIRE History	CAL FIRE Threat	CAL FIRE Response	CAL FIRE Proximity	CAL FIRE Scores	Combined Scores
1	Dyer Mountain Initiative	5	5	5	5	5	100	25	6	6	2	1	15	40
1	Thompson Peak Initiative	5	5	5	5	5	100	25	6	6	2	1	15	40
1	Cheney Creek Fuel	5	5	5	5	5	100	25	6	6	2	1	15	40
1	South Eagle Lake	5	5	5	5	5	100	25	6	6	2	1	15	40
2	Little Valley	3	5	5	5	5	100	23	6	6	2	1	15	38
3	Big Valley Mountain	5	5	5	4	3	60	22	6	6	2	1	15	37
4	Doyle	3	4	5	3	2	40	17	3	6	3	1	13	30
5	Diamond Mountain Initiative	5	2	3	2	5	100	17	6	3	2	1	12	29
6	Spaulding	5	3	3	5	2	40	18	3	4	1	1	9	27
6	Macelaine	2	4	4	3	5	100	18	2	4	2	1	9	27
7	Ash Valley III	1	3	1	5	5	100	15	2	4	2	0	8	23
7	McBride Springs	1	2	2	5	5	100	15	1	4	3	0	8	23
8	Letter Box	1	4	3	5	1	20	14	1	4	1	0	6	20
9	McClelland	3	3	1	3	5	100	15	0	4	0	0	4	19
10	Hog Sheep Fire (Reforestation)	5	5	3	3	2	100	18					0	18

¹ Dan Smith, Fire Director, National Association of State Foresters, Presentation at the 2012 Wildland Urban Interface Conference, Reno Nevada.

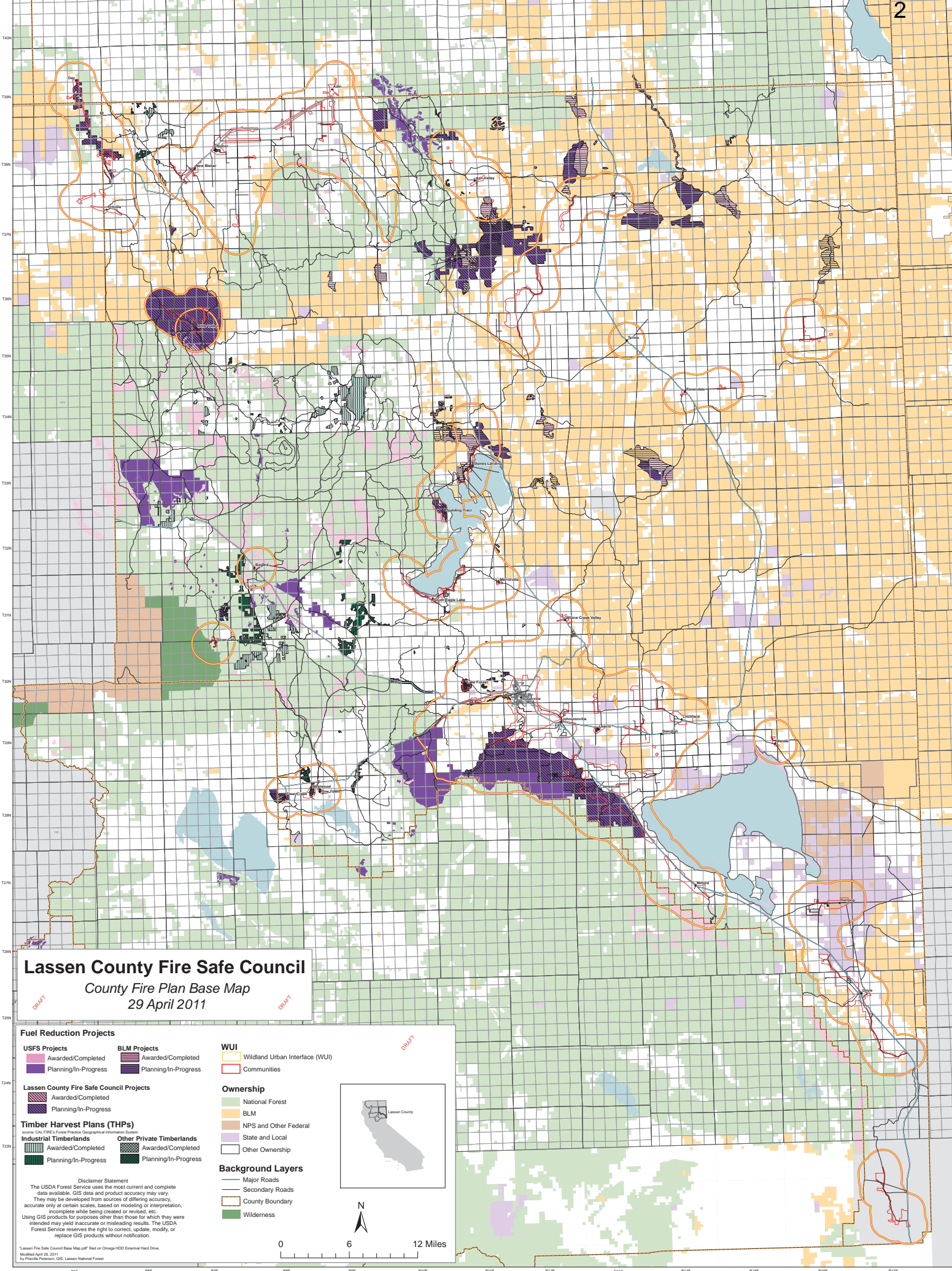


**LASSEN COUNTY
WILDLAND URBAN INTERFACE
ZONES**

- Lassen County
- Lassen County Developed Area
- Wildland Urban Interface (WUI) 2021
- Lakes and Reservoirs
- Major Roads
- Communities
- Bureau of Land Management
- Bureau of Indian Affairs
- Military
- National Park Service
- Private
- State
- US Forest Service

0 12.5 25 50 Miles





Lassen County Fire Safe Council
 County Fire Plan Base Map
 29 April 2011

Fuel Reduction Projects

USFS Projects

- Awarded/Completed
- Planning/In-Progress

BLM Projects

- Awarded/Completed
- Planning/In-Progress

Lassen County Fire Safe Council Projects

- Awarded/Completed
- Planning/In-Progress

Timber Harvest Plans (THPs)

Industrial Timberlands

- Awarded/Completed
- Planning/In-Progress

Other Private Timberlands

- Awarded/Completed
- Planning/In-Progress

WUI

- Wildland Urban Interface (WUI)
- Communities

Ownership

- National Forest
- BLM
- NPS and Other Federal
- State and Local
- Other Ownership

Background Layers

- Major Roads
- Secondary Roads
- County Boundary
- Wilderness

Disclaimer Statement

The USDA Forest Service uses the most current and complete data available. GIS data and product accuracy may vary. They may be developed from sources of differing accuracy, accurate only at certain scales, based on modeling or interpretation, incomplete while being created or revised, etc. Using GIS products for purposes other than those for which they were intended may yield inaccurate or misleading results. The USDA Forest Service reserves the right to correct, update, modify, or replace GIS products without notification.

Map of California showing the location of Lassen County.

Scale: 0, 6, 12 Miles

DRAFT

DRAFT



0 6 12 Miles



Lassen Fire Safe Council, Inc.

P.O. Box 816 • Susanville, CA 96130 • (530) 251-5560 • www.lassenfiresafecouncil.org

Lloyd Keefer, Chair
 Kerri Cobb, Vice Chair
 Kam Vento, Secretary/Treasurer
 Tom Esgate, Managing Director
 Katlyn Lonergan, EO Assistant

March, 2021

This year marks the 15th year that the Lassen County Community Wildfire Protection Plan (CWPP) Working Group has gathered, reviewed and ranked projects and reviewed the Wildland Urban Interface boundaries throughout the county. Under the MOU with the participants, Lassen Fire Safe Council, Inc. continues in its leadership role in CWPP planning and coordination. Our monthly general in person meetings have been suspended due to COVID-19 but we will be trying to begin virtual meetings in the near future as a forum for the CWPP participants and the community as a whole. In June of 2020 the Lassen County Board of Supervisors allocated funds to support our CWPP and *Firewise Communities USA* efforts, which continue to allow us to dedicate more time and energy to these critical programs.

The CWPP Working Group continues to place its highest priority on moving forward with implementing the Thompson Peak Initiative fuel treatments and ramp up of the new Dyer Mountain Initiative. All participating CWPP partners believe that combined public/private partnerships are the best path forward to preserve and restore our watersheds and protect our communities. LFSC continues to take the lead role in coordinating these efforts along with critical support from the Honey Lake Valley RCD.

Lassen Fire Safe Council, Inc. continues to build on our strong partnerships. We have an aggressive program of active and planned fuel treatments and we are also ramping up the pace of getting Lassen County communities organized and recognized by the *Firewise Communities USA* program. We have 10 recognized communities to date and this year 9 of them need their Community Assessments and Action Plans renewed and we hope to get Westwood recognized for the first time.

Part and parcel of this *Firewise* effort is our one-on-one contact with residents through our Risk Assessment in the Home Ignition Zone consultations. Here residents learn what they can do to reduce structural ignitability in the advent of a nearby wildfire. One important point to remember: **Many of the homes that are lost in wildfires are ignited by embers from a fire a substantial distance away, and then the home ignites the adjacent vegetation, not vice versa!** As we say in our homeowner consultations: "This new information is standing things on their head in California where there is a huge and important emphasis on defensible space." Just having defensible space will not protect the home from an ember shower, one must also address structural ignitability. We continue to receive rave reviews from residents during our visits and we often hear "I had no idea..." at the close of our consultations.

Last year we continued to work on the current phases of our Big Valley Mountain and South Eagle Lake projects, on USFS and private lands within the Diamond Mountain Initiative and we began work on private lands within the Thompson Peak Initiative (TPI). We are hoping to acquire additional funds this year for the new Dyer Mountain Initiative, TPI on Plumas National Forest lands, and for reforestation efforts in the footprints of the 2020 Sheep and Hog Fires.

A big thank you to all our partners in the Lassen County CWPP Working Group,

Lloyd Keefer,

Chair



We are active participants in FIREWISE Communities USA procedures.

2021 Lassen County CWPP Work Plan

WUI Area: Westwood-Clear Creek

Funding: Partially Funded

2021 Implementation

Number of Acres: 1850

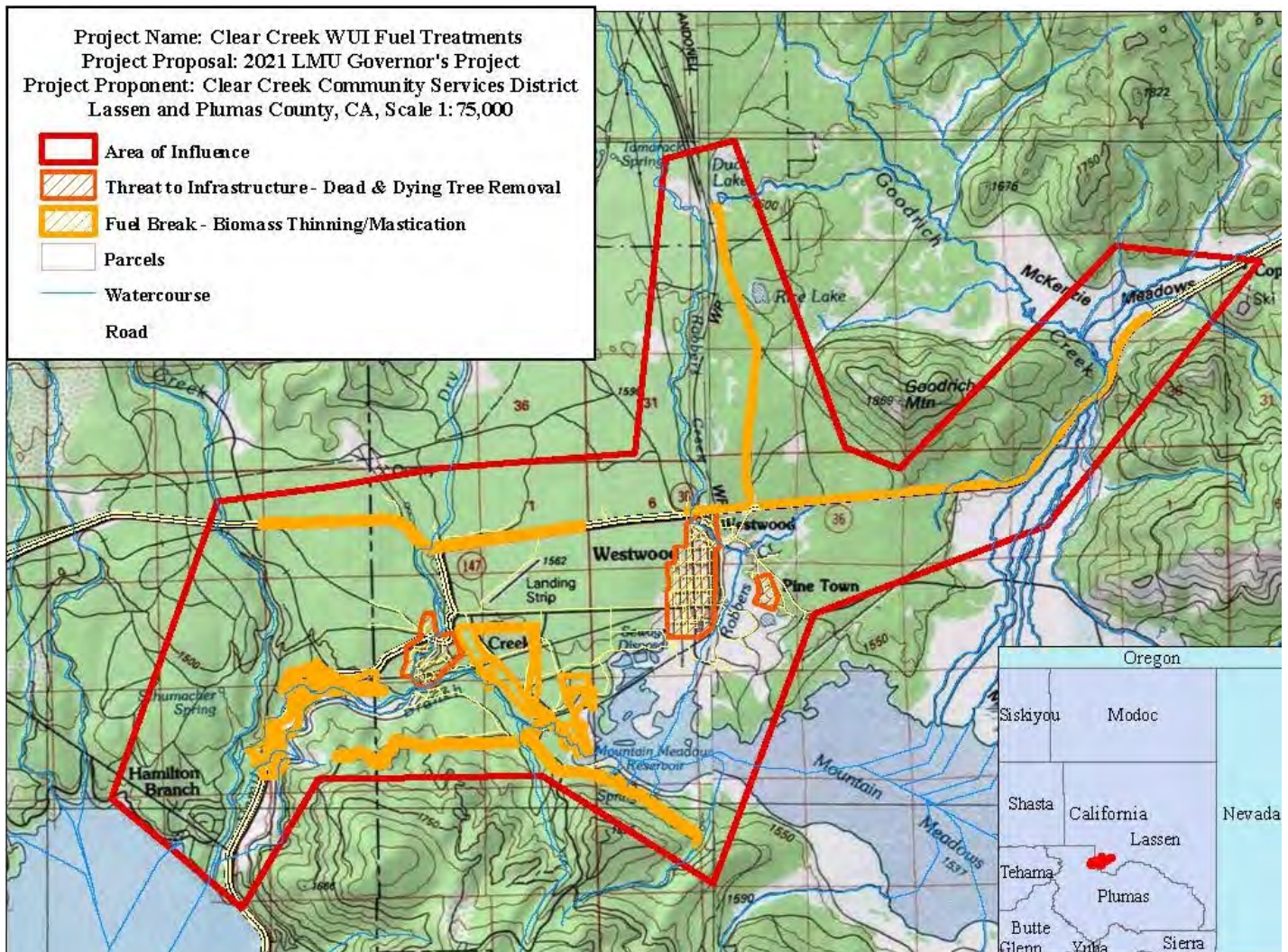
Agency or Agencies: LFSC, SPI, WM Beaty, CALFIRE, PG&E, Clear Creek & Westwood CSD

Project Name: Dyer Mountain Initiative

Project Coordinates: N40.29628 W121.05017

Summary of Project: LFSC has completed over 900 acres of the project to date. Partners include: Clear Creek & Westwood CSDs, CALFIRE, SPI, WM Beaty & Associates and PG&E. Brush fuels will be masticated where they pose a threat to homes and/or are within potential evacuation corridors. We will also perform additional Risk in the Home Ignition Zone/structure ignitability assessments with community residents, provide additional treatments around homes and construct additional fuel breaks. Additional treatment funds are being requested from CALFIRE to perform more mastication, thinning and community treatments that will restore the watershed and reduce hazardous fuel loads within and around the local communities. Additional landscape scale treatments are expected to be added within the project's area of influence.

Project Map:



2021 Lassen County CWPP Work Plan

WUI Area: Janesville & Milford

Funding: Partially Funded

2021 Implementation

Number of Acres: 20000

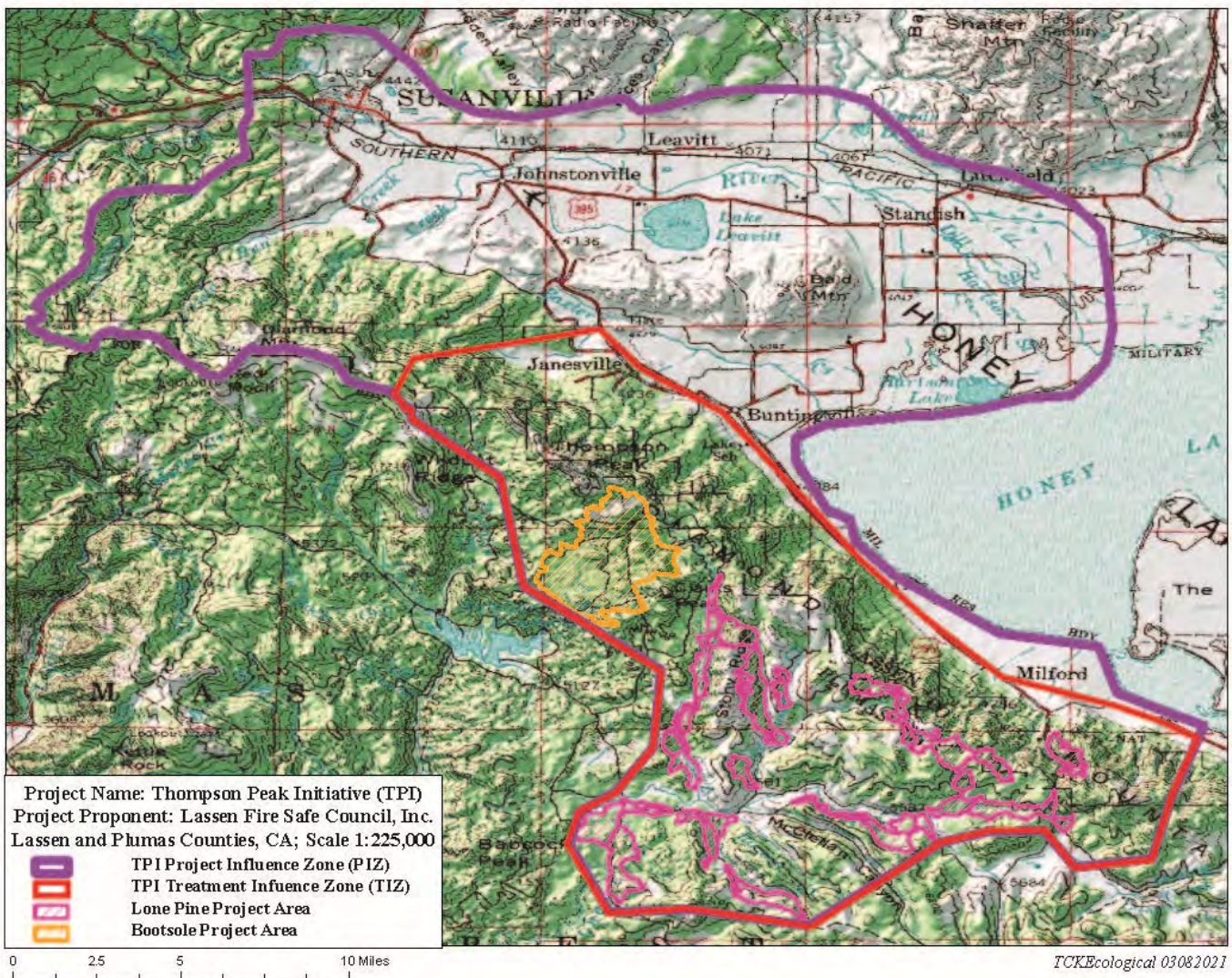
Agency or Agencies: LCSC, SIR, Janesville, Milford, HLVRCD, PNF, CALFIRE

Project Name: Thompson Peak Initiative

Project Coordinates: N40.26777 W120.49461

Summary of Project: Project is a continuation of the 2014 fuel treatments and Risk Assessments in the Home Ignition Zone/structural ignitability assessments. The planned treatments include developing defensible space around homes and implementing landscape scale fuel treatments. Forest stands will be thinned and brush fuels will be masticated where they pose a threat to homes and/or are within potential evacuation corridors. Biomass utilization of material would be used to reduce costs. Project merges Janesville & Milford Projects.

Project Map:



2021 Lassen County CWPP Work Plan

WUI Area: South Eagle Lake/Susanville

Funding: Partially Funded

2021 Implementation

Number of Acres: 5737

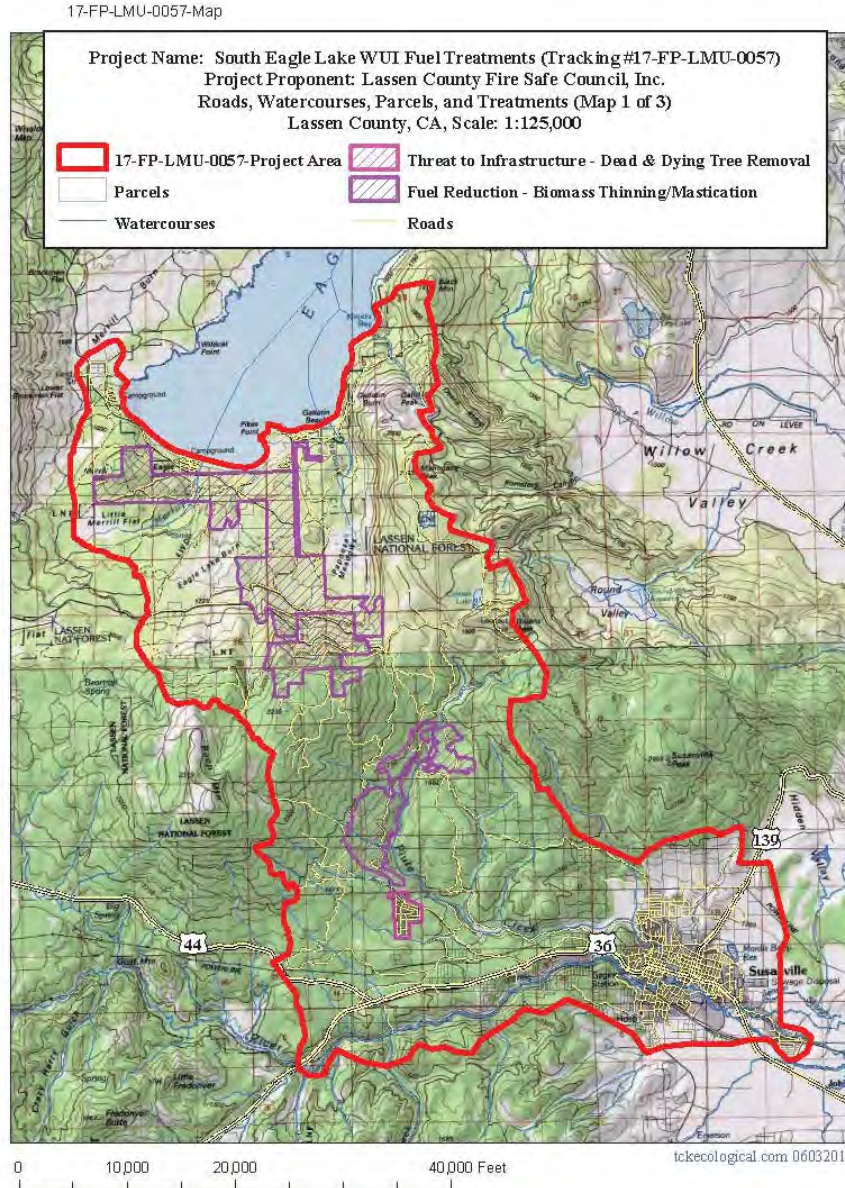
Agency or Agencies: LFSC, WMB, SPI, CAL FIRE, HLVRCD, CALTRANS

Project Name: South Eagle Lake/Lake Forest, Forest & Watershed Restoration

Project Coordinates: 40 32 22 120 47 1

Summary of Project: Biomass thinning of plantation and native forests, mastication and emergent brush treatments to restore forest and watershed as well as removal of trees around structures in the Lake Forest community. Project merges our previous Eagles Nest and North Susanville projects.

Project Map:



2021 Lassen County CWPP Work Plan

WUI Area: Little Valley

Funding: Partially Funded

2021 Implementation

Number of Acres: 100

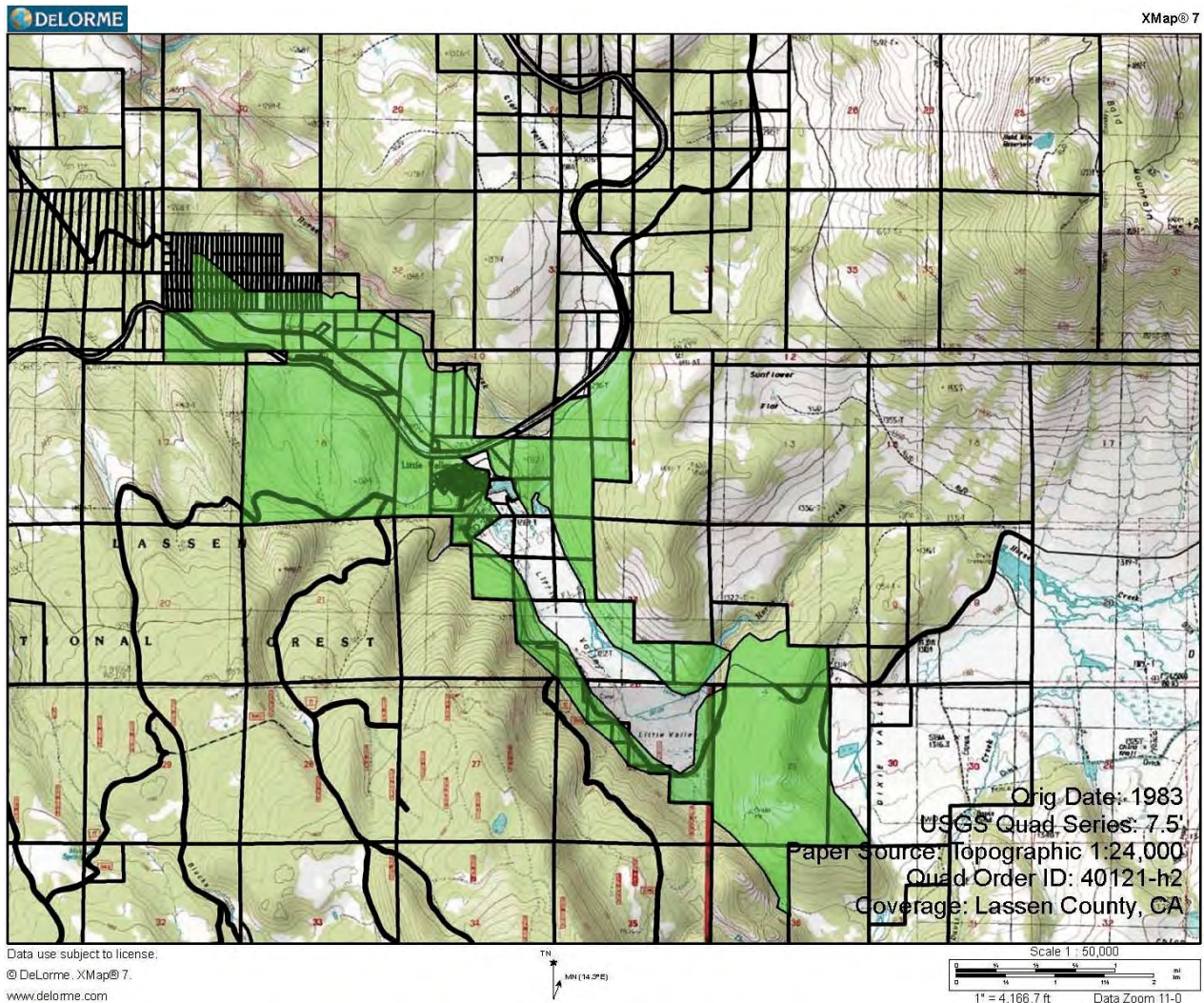
Agency or Agencies: LFSC, Calfire, PG&E, USFWS, Little Valley CSD

Project Name: Little Valley Forest & Meadow Restoration Project

Project Coordinates: N40.8938 W121.1815

Summary of Project: LFSC has received partial funding for this project. We are seeking funds to complete the project. Primary work will be the removal of invasive western juniper and forest thinning in overstocked pine stands. The project will also assist community homeowners with treatments within the Little Valley residential neighborhood and protect community infrastructure (PG&E electric lines). Risk in the Home Ignition Zone/structure ignitability assessments within and around the community will also be part of the project. Project may also include prescribed fire follow-up/maintenance of previously completed treatments.

Project Map:



2021 Lassen County CWPP Work Plan

WUI Area: Day/Lookout/Big Valley

Funding: Partially Funded

2021 Implementation

Number of Acres: 13,400

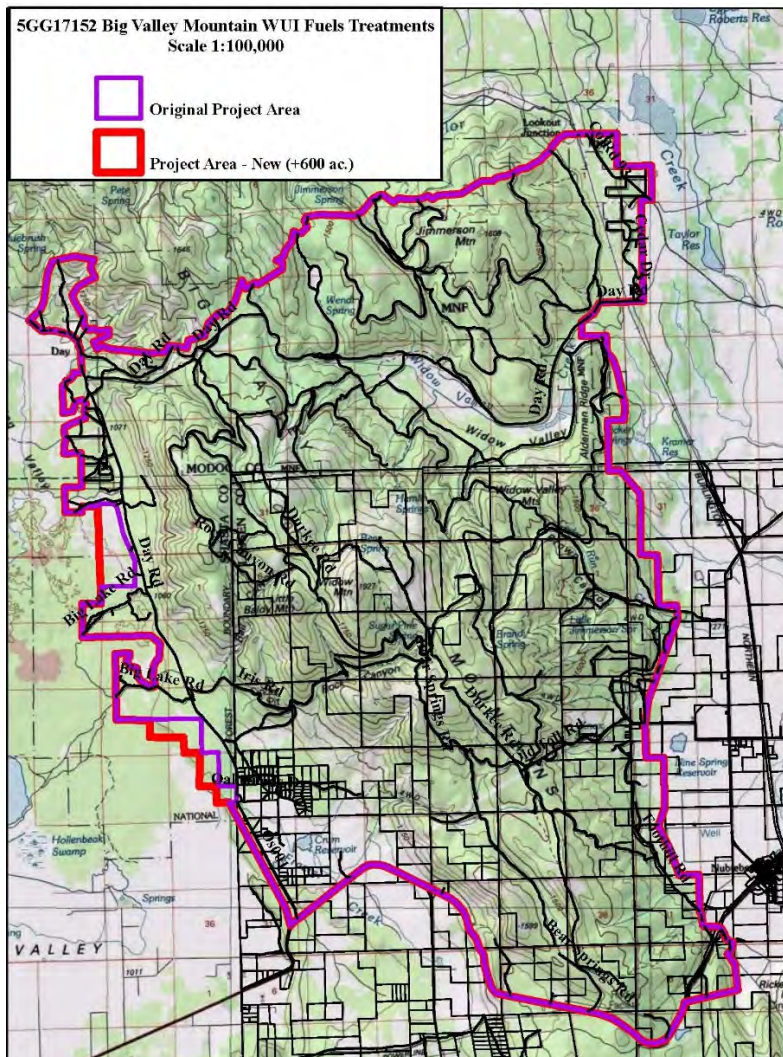
Agency or Agencies: LFSC, SPI, WM Beaty, CAL FIRE

Project Name: Big Valley Mountain WUI Fuel Treatments

Project Coordinates: -121.232 41.067

Summary of Project: Project continues Lassen Fire Safe Council’s landscape scale WUI hazardous fuel reduction and removal fuel treatments, including dead and dying trees, within the Big Valley Mountain range. With this project we will be implementing 13,400 acres of hazardous fuel reduction and removal fuel treatments, including dead and dying trees, on private land within the SRA, primarily within the Very High and High Hazard Fire Severity Zones. The project will reduce wildland fire risk for 491 habitable structures within the 51,826-acre Project Area/Area of Influence. The vast majority of the project area lies within a Wildland Urban Interface Zone (WUI). The project merges and implements 3 previous CWPP projects: Day Lassen Bench, Lookout and Big Valley Mountain Fuelbreak.

Project Map:



2021 Lassen County CWPP Work Plan

WUI Area: Doyle

Funding: Planning/Not Funded

2021 Planning

Number of Acres:

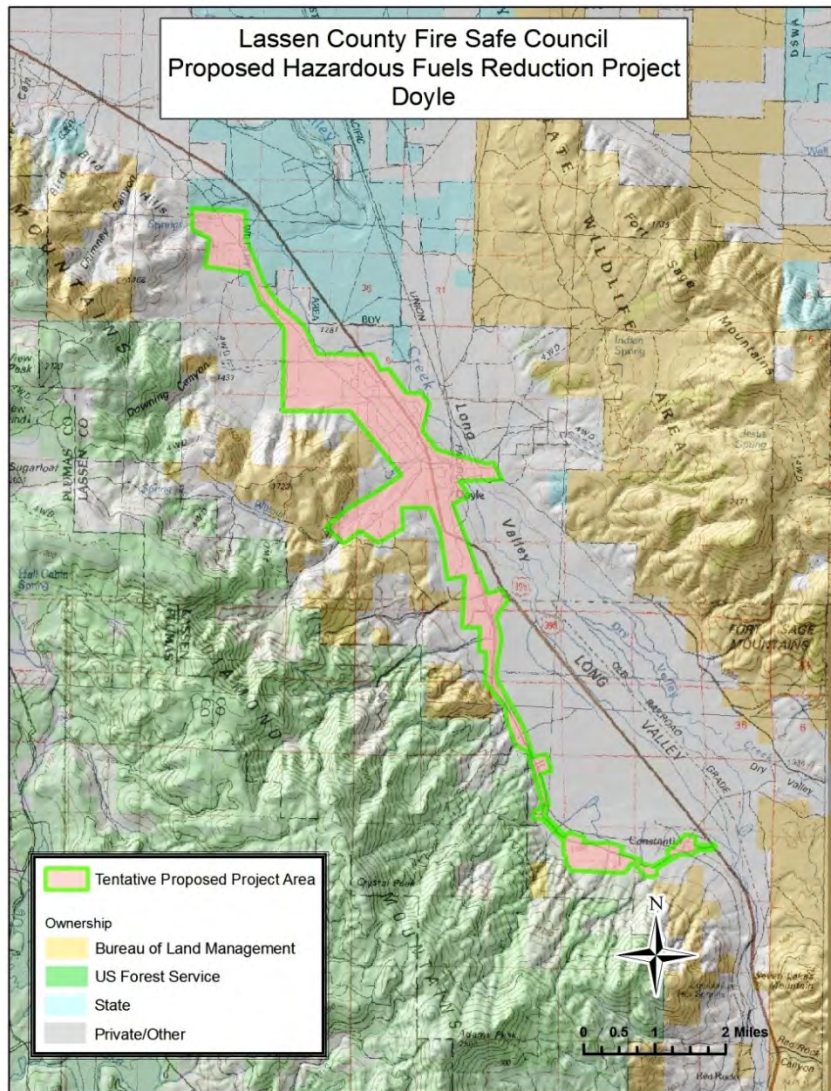
Agency or Agencies: LFSC, PNF, BLM

Project Name: Doyle Fuel Treatments and Risk Assessments

Project Coordinates: N40.0273 W120.1030

Summary of Project: LFSC, in conjunction with PNF and BLM, is in the initial planning stage of assisting the community of Doyle in gaining Firewise Communities USA status/certification and with a possible fuels treatment project that could include fuel breaks in sagebrush areas surrounding the community. Also under consideration could be private land forest thinning with cooperating landowners that are adjacent to PNF. Risk Assessments in the Home Ignition Zone/structural ignitability assessments would also be conducted with community residents. LFSC has been making its initial contacts with community members.

Project Map:



2021 Lassen County CWPP Work Plan

WUI Area: Susanville

Funding: Partially Funded

2021 Implementation

Number of Acres: 7000

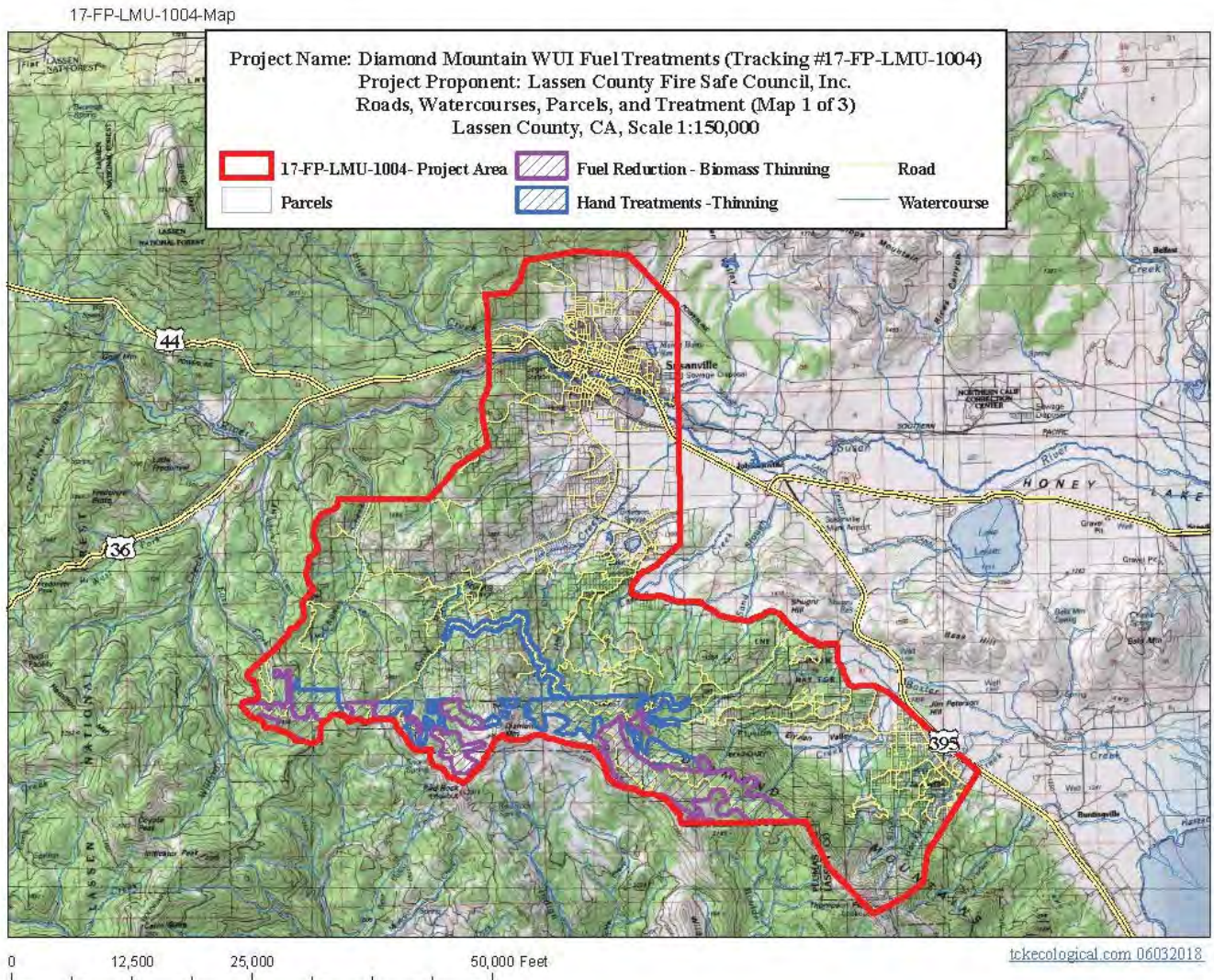
Agency or Agencies: LFSC, CAL FIRE, SNC, HLVRCD, USFS, WM Beaty, BLM

Project Name: Diamond Mountain

Project Coordinates: N40.3214 W120.6690

Summary of Project: LFSC will continue planning for a collaborative fuels treatment project along and below Diamond Mountain south of Susanville. Work will tie in to work previously completed by LFSC, BLM and HLVRCD. LNF will be the lead for USFS land and LCFSC will be the lead for private land within the project area. It is anticipated the LFSC will be asking for assistance from CFSC, SNC, CalFire and USFS with funding.

Project Map:



2021 Lassen County CWPP Work Plan

WUI Area: Spaulding

Funding: Planning/Not Funded

2021 Planning

Number of Acres: 40

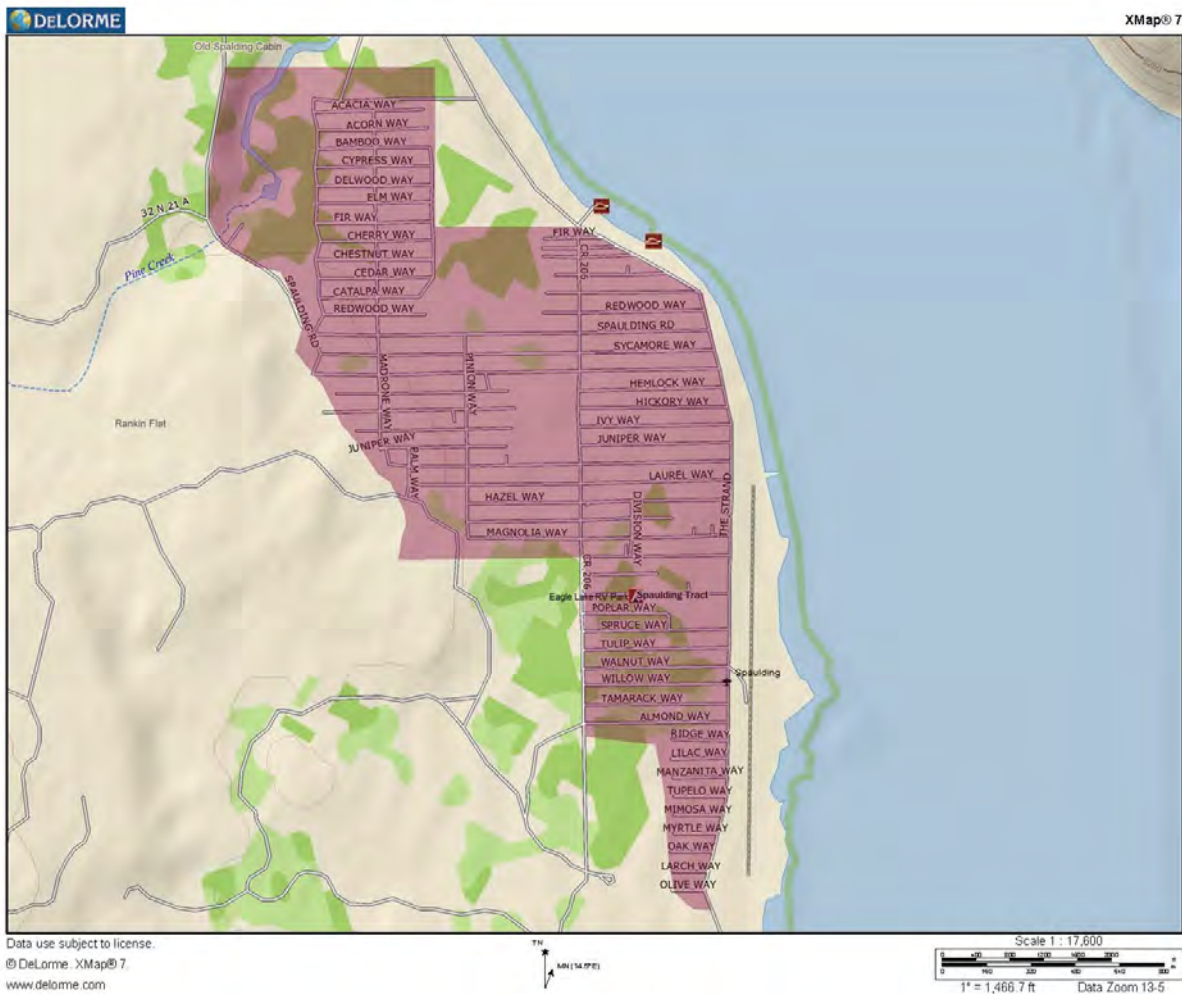
Agency or Agencies: LFSC

Project Name: Spaulding Fuel Reduction Planning and Risk Assessments

Project Coordinates: N40.6573 W120.7759

Summary of Project: LFSC will be seeking funds to perform risk assessments in the home ignition zone and fuel reduction treatments within and around the Spaulding community in Lassen County. Green waste days will be planned for the Summer of 2019. Work will complement previously completed work by LNF. We may be asking for funding and/or assistance from Lassen County/Title III, CFSC, CalFire, Lassen County RAC or USFS

Project Map:



2021 Lassen County CWPP Work Plan

WUI Area: Madeline

Funding: Planning/Not Funded

2021 Planning

Number of Acres: 8,718

Agency or Agencies: LFSC, PRCD, CALFIRE, BLM-AFO

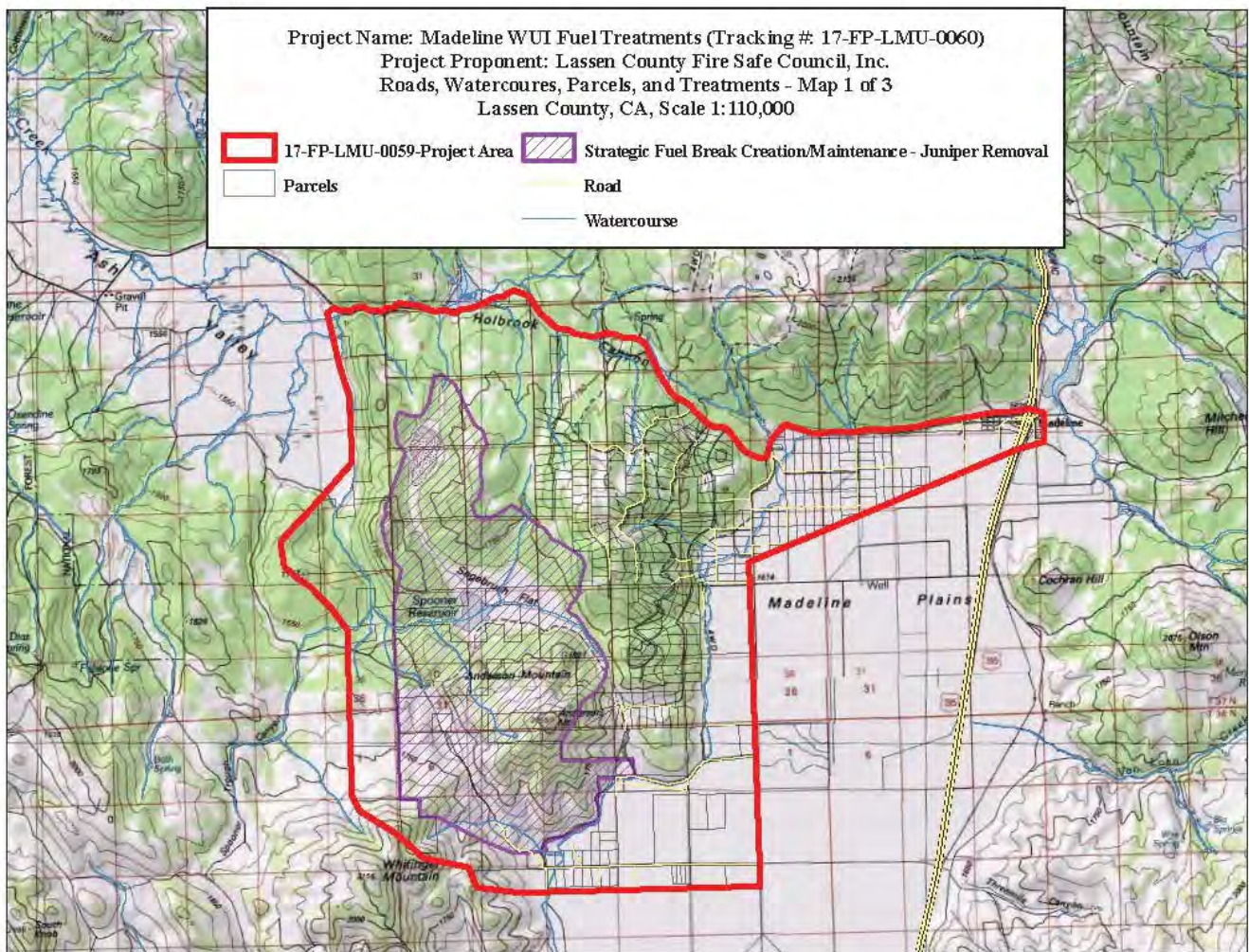
Project Name: Madeline

Project Coordinates: N41.0514 W120.4567

Summary of Project: Project to include a Community Assessment, Firewise Community recognition, Risk Assessments in the Home Ignition Zone/Structural Ignitability Assessments, Fuel Treatments Around Structures and Landscape Scale Fuel Treatments. Project merges our previous Ash Valley IV and Spooner Reservoir projects.

Project Map:

17-FP-LMU-0059-Map



2021 Lassen County CWPP Work Plan

WUI Area: Ash Valley

Funding: Partially Funded

2021 Implementation

Number of Acres: 500

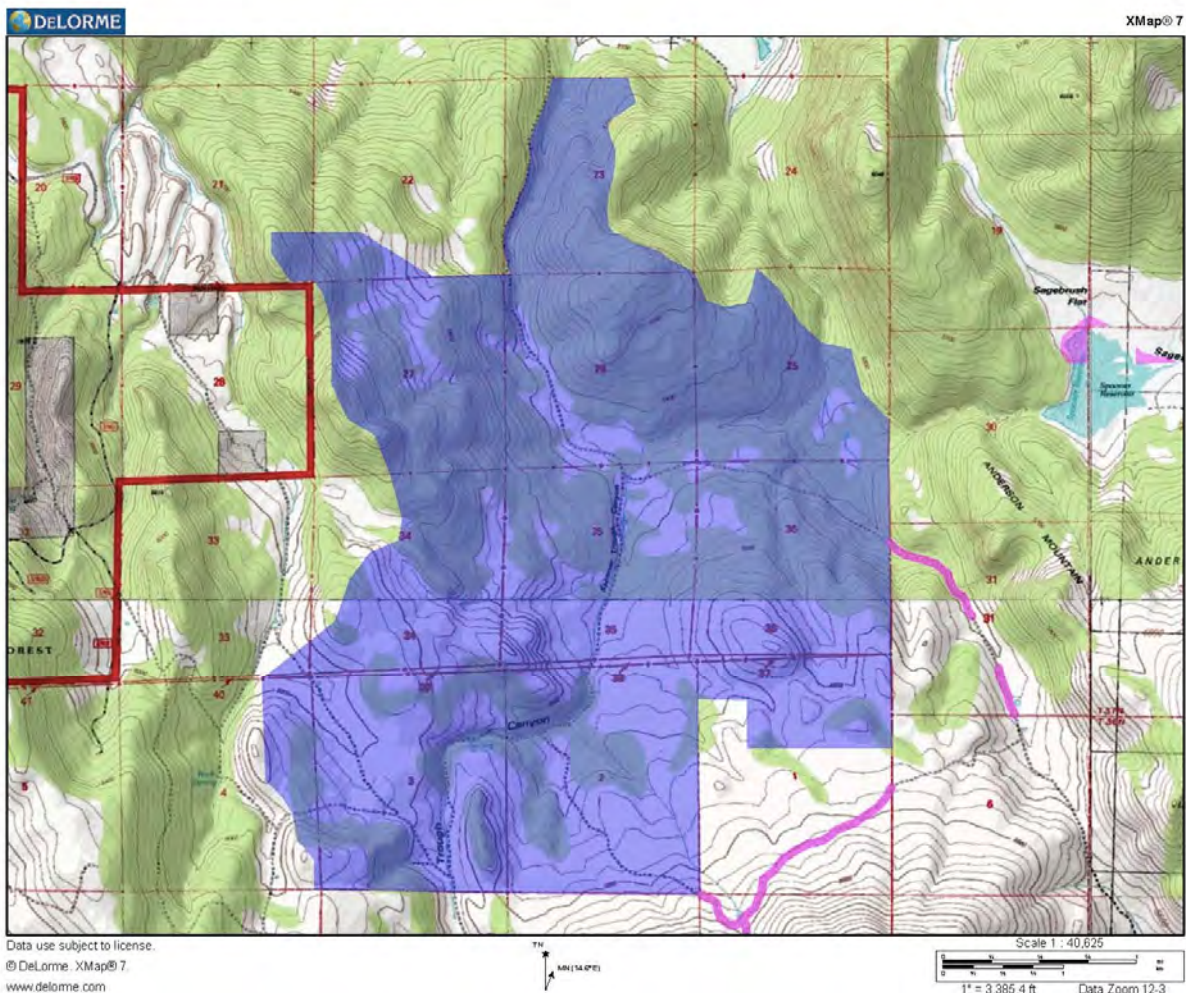
Agency or Agencies: LFSC, BLM, CALFIRE

Project Name: Ash Valley III Watershed Restoration Project

Project Coordinates: N41.0047 W120.6750

Summary of Project: CSSRI has implementing this watershed restoration project on private and BLM managed land since BLM completed NEPA in 2011. Partial funding has been obtained from Lassen RAC, NRCS, SNC, DWR, USFWS and private landowner contributions. Project connects the BLM South Ash Valley, CSSRI Ash Valley I, II & IV and the CSSRI South Knob projects. Work consists of the removal of invasive juniper through biomass utilization in an effort to reduce hazardous fuel loads and restore the watershed and wildlife habitat. The balance of the mechanical treatments await completion in 2019.

Project Map:



2021 Lassen County CWPP Work Plan

WUI Area: McBride Springs DFPZ

Funding: Planning/Not Funded

2021 Planning

Number of Acres: 743

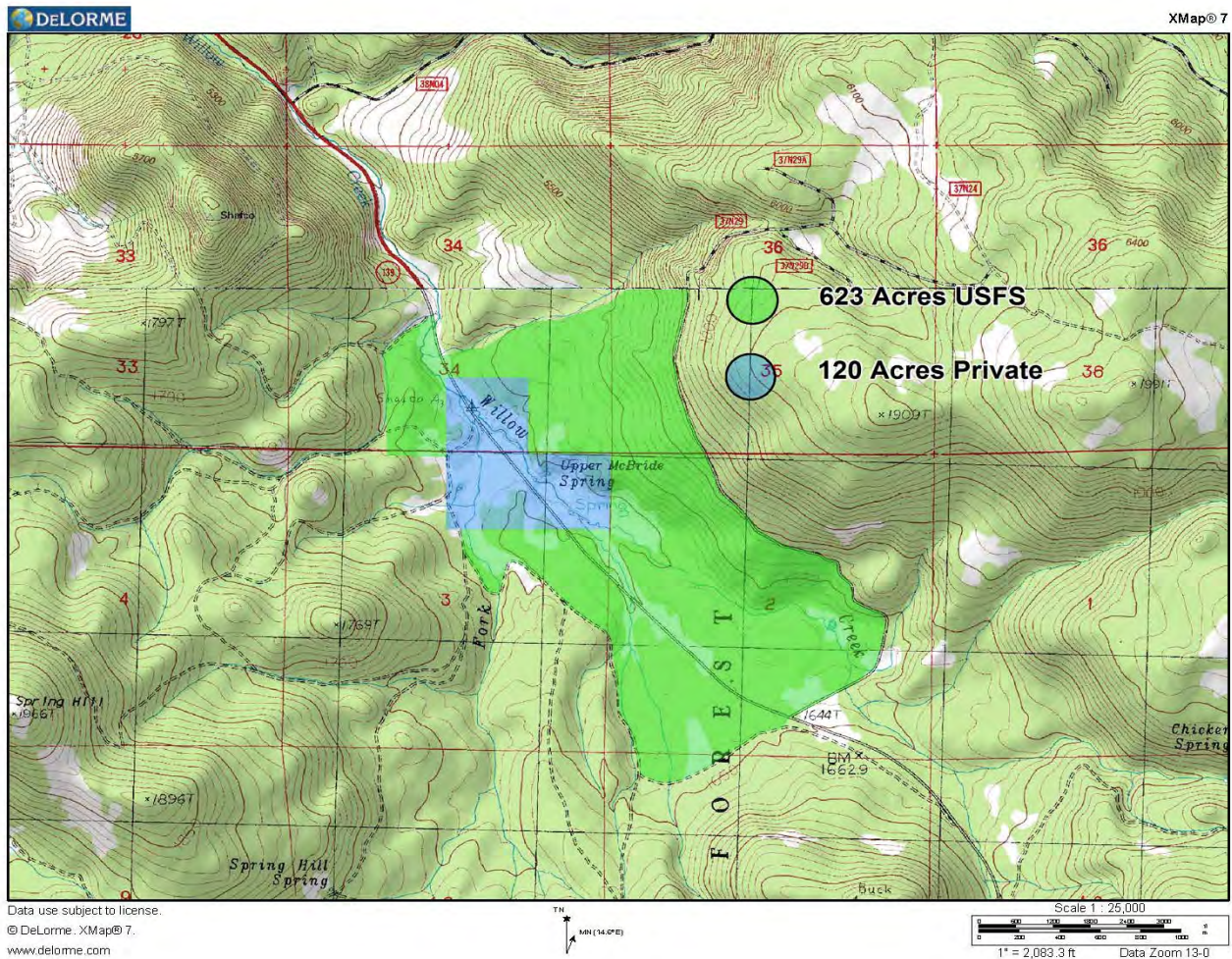
Agency or Agencies: LFSC, MDF

Project Name: McBride Springs Upland Restoration

Project Coordinates: N40.9919 W120.7978

Summary of Project: CSSRI, through its partners LCFSC & PRCO, and in cooperation with the USFS, will be making applications with various agencies to fund treatments on private and USFS lands. NEPA and CEQA clearance has been underway for some time. In 2011 stream channel restoration work was completed. Planning work has been funded by SNC and CSSRI. Project would restore an important watershed along the Highway 139 corridor. Invasive juniper would be removed through biomass utilization in an effort to reduce hazardous fuel loads and restore the watershed and wildlife habitat. Eastside pine thinning could also occur. Project would be implemented by the Cooperative Sagebrush Steppe Restoration Initiative partnership, with the Pit Resource Conservation District as the lead, and funding partners.

Project Map:



2021 Lassen County CWPP Work Plan

WUI Area: Adin

Funding: Planning/Not Funded

2021 Implementation

Number of Acres: 400

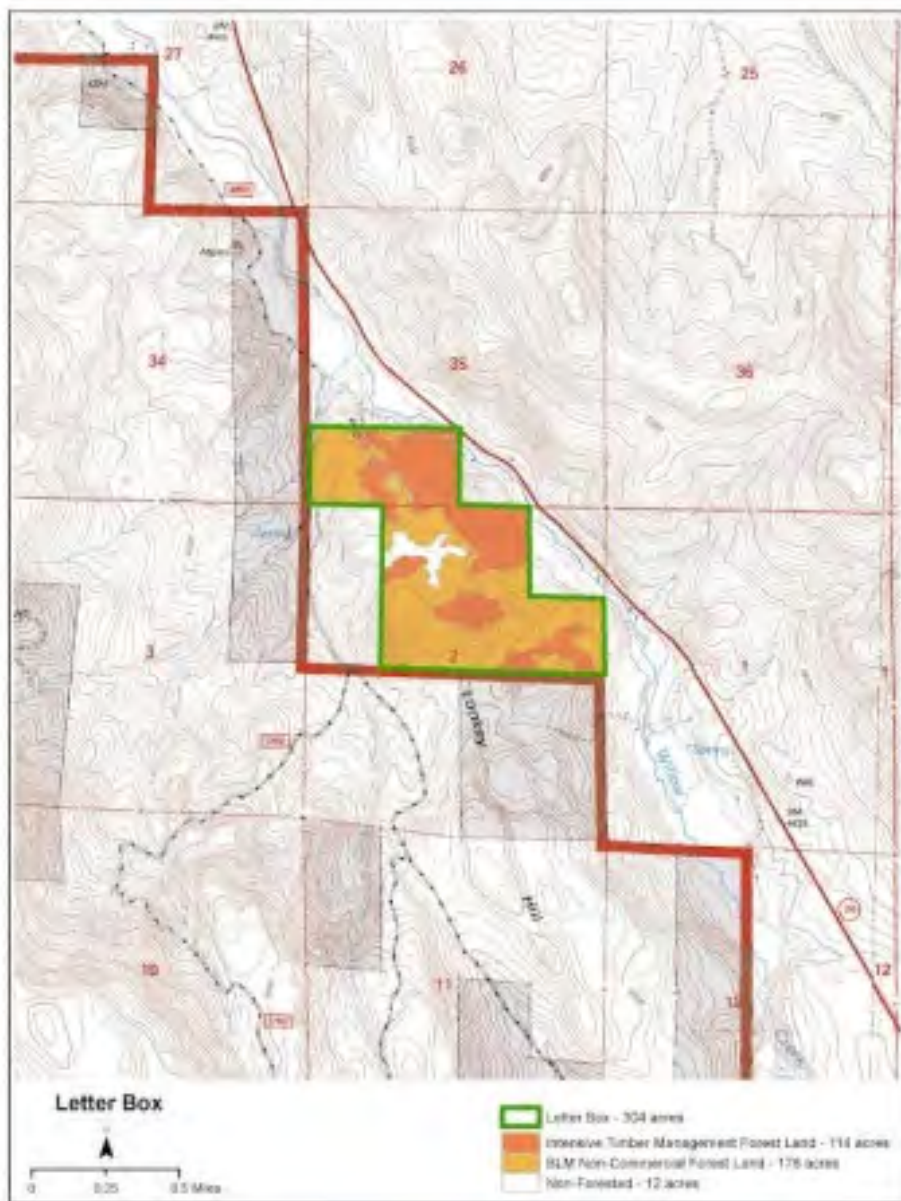
Agency or Agencies: LFSC, BLM-AFO

Project Name: Letter Box

Project Coordinates: 0676147 4549573

Summary of Project: Commercial thinning of overstocked stands to achieve the desired stocking level (approximate BA of 80sq. ft.) to increase health and vigor. Commercial and non-commercial sanitation harvest of trees to control insects and disease.

Project Map:



2021 Lassen County CWPP Work Plan

WUI Area: Grasshopper

Funding: Partially Funded

DFPZ 2021 Planning

Number of Acres: 2131

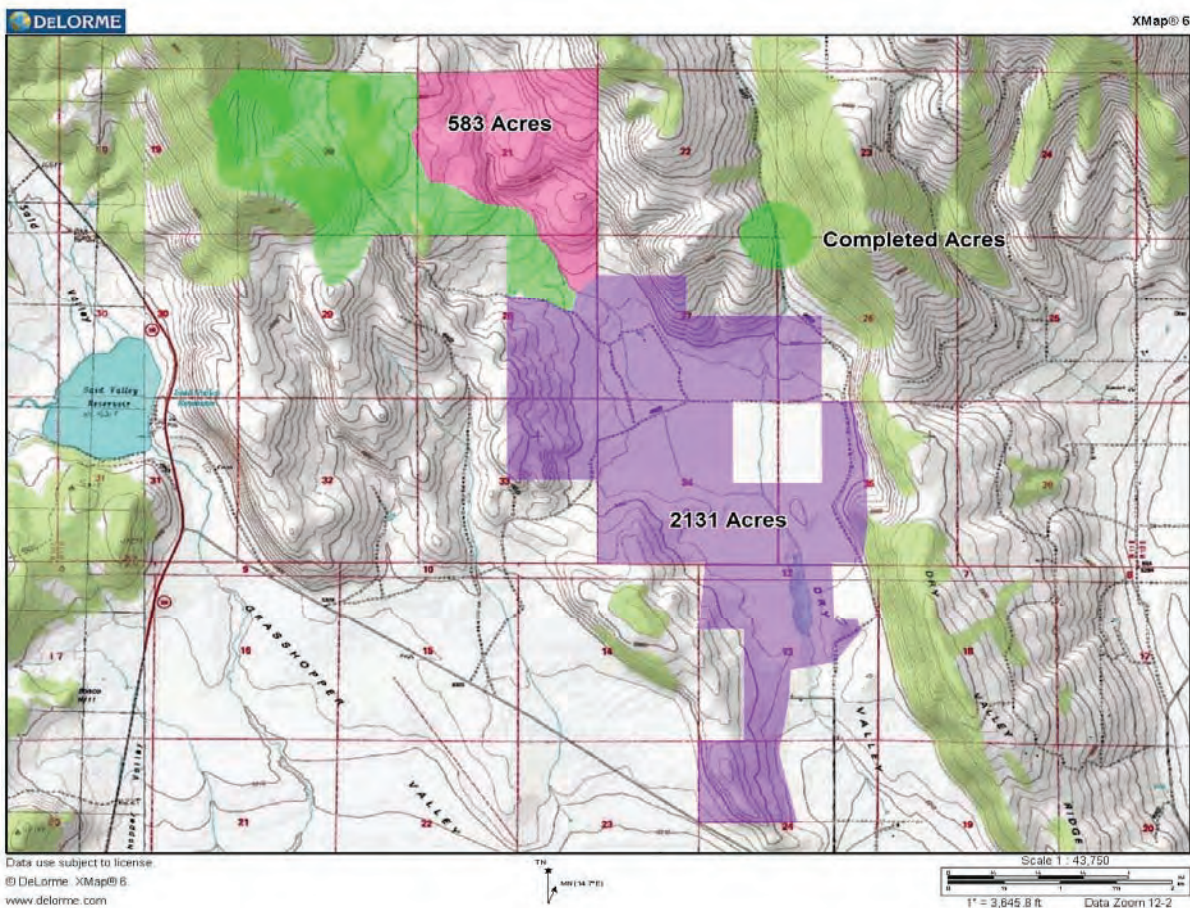
Agency or Agencies: LFSC

Project Name: McClelland Watershed/Wildlife Habitat Restoration Project

Project Coordinates: N40.9199 W120.7020

Summary of Project: CSSRI, through its partners PRCD & LCFSC, is making applications with various agencies to fund treatments on McClelland Ranch private lands in North Grasshopper Valley. The 583 acre portion of the project identified in the map below was completed in 2012. Project connects with the CSSRI South Knob projects. Work consists of the removal of invasive juniper through biomass utilization in an effort to reduce hazardous fuel loads and restore the watershed and wildlife habitat.

Project Map:



2021 Lassen County CWPP Work Plan

WUI Area: Susanville

Funding: Planning/Not Funded

2021 Implementation

Number of Acres: 40,000

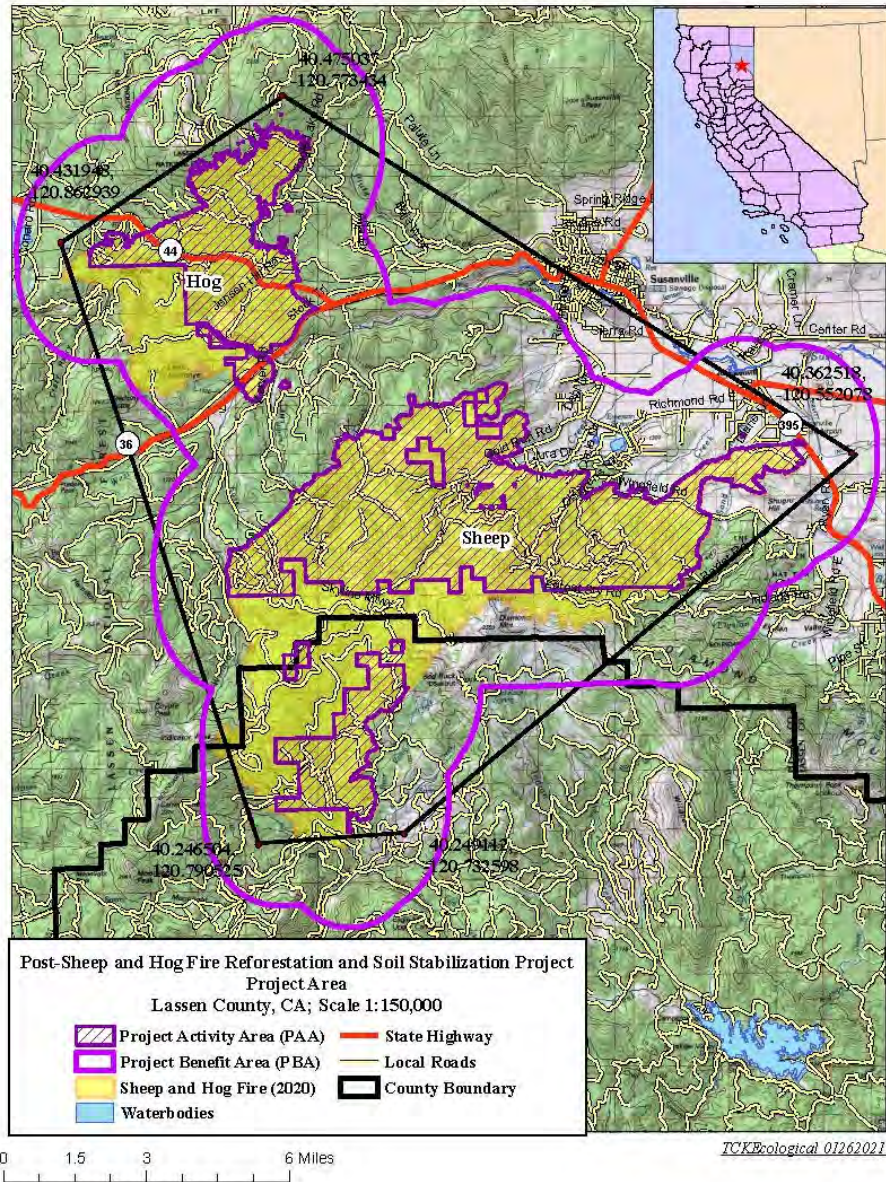
Agency or Agencies: LFSC, HLVRCD, WM Beaty, SPI

Project Name: Hog & Sheep Fires Reforestation

Project Coordinates: 40.36252 120.55208

Summary of Project: LFSC has applied to FEMA for Reforestation funds in the footprints of the Hog & Sheep Fires. LFSC will also apply for funds from California Climate Investments through CALFIRE. The Project Area encompasses approximately 40,000 acres but the request to date only covers private lands.

Project Map:



2021 Lassen County CWPP Work Plan

WUI Area: Ash Valley

Funding: Planning/Not Funded

2021 Planning

Number of Acres: 1900

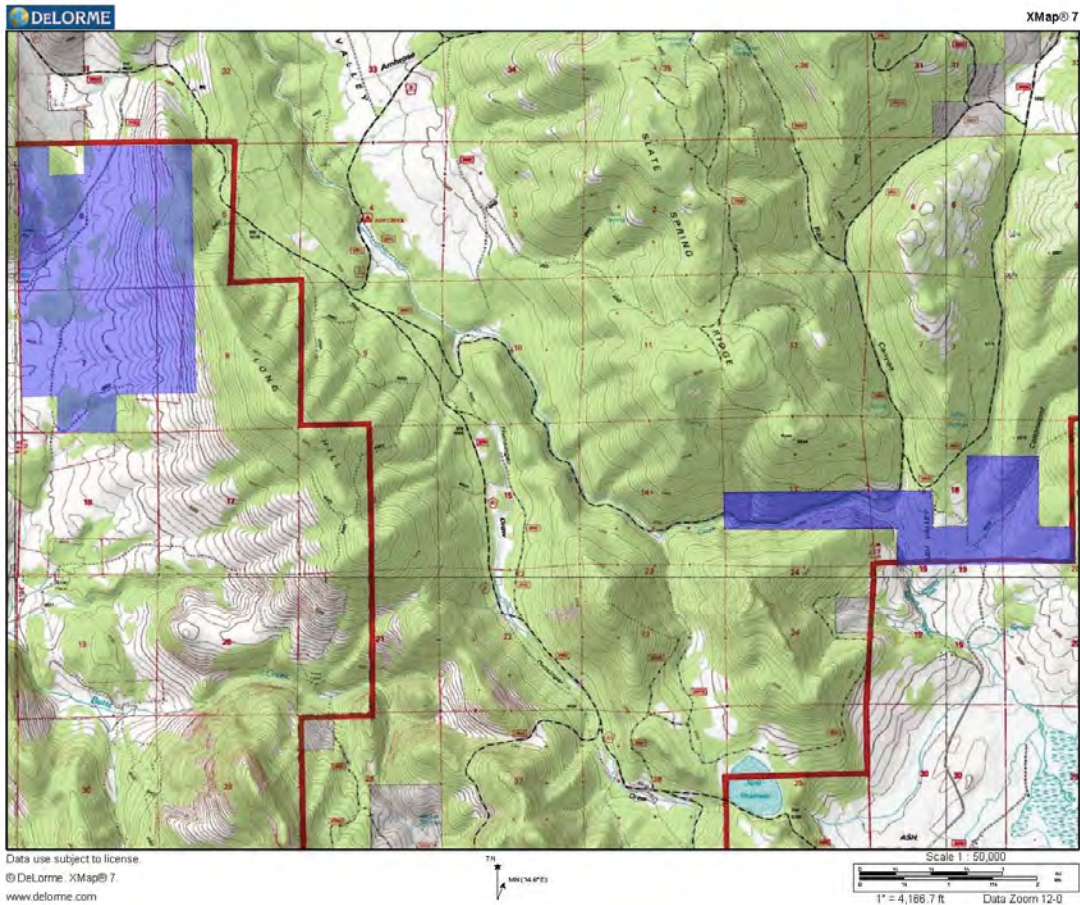
Agency or Agencies: LFSC

Project Name: Ash Watershed Restoration Project

Project Coordinates: N41.1435 W120.8013

Summary of Project: CSSRI will continue planning with the Modoc National Forest (MDF) on a collaborative fuels treatment project west and north of the Ash Valley Community. MDF will be the lead for USFS land and LCFSC will be the lead for private land within the project area. It is anticipated CSSRI will be asking for assistance from CFSC, CalFire, NRCS and USFS with funding.

Project Map:



2021 Lassen County CWPP Work Plan

WUI Area: Susanville

Funding: Planning/Not Funded

2021 Planning

Number of Acres: N/A

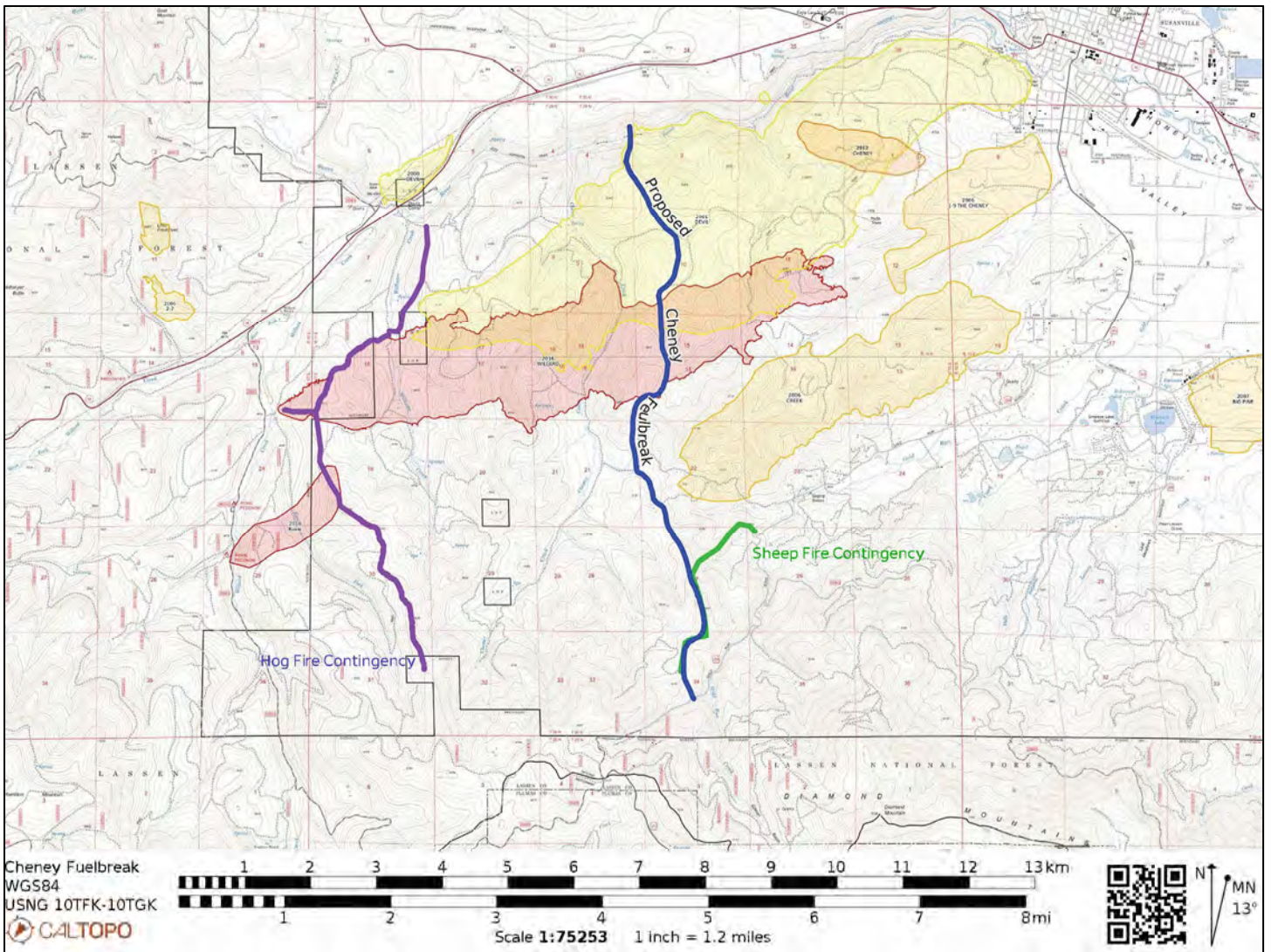
Agency or Agencies: CALFIRE, LFSC, Private Landowners

Project Name: Cheney Creek Fuel Break

Project Coordinates: 40.3524 120.7338

Summary of Project: Fuel Break to assist in protecting Susanville communities from fires advancing from the west as evidenced in numerous fires over the past two decades.

Project Map:



2021 Lassen County CWPP Work Plan

WUI Area: Non-WUI

Funding: Funded

2021 Implementation

Number of Acres: 40

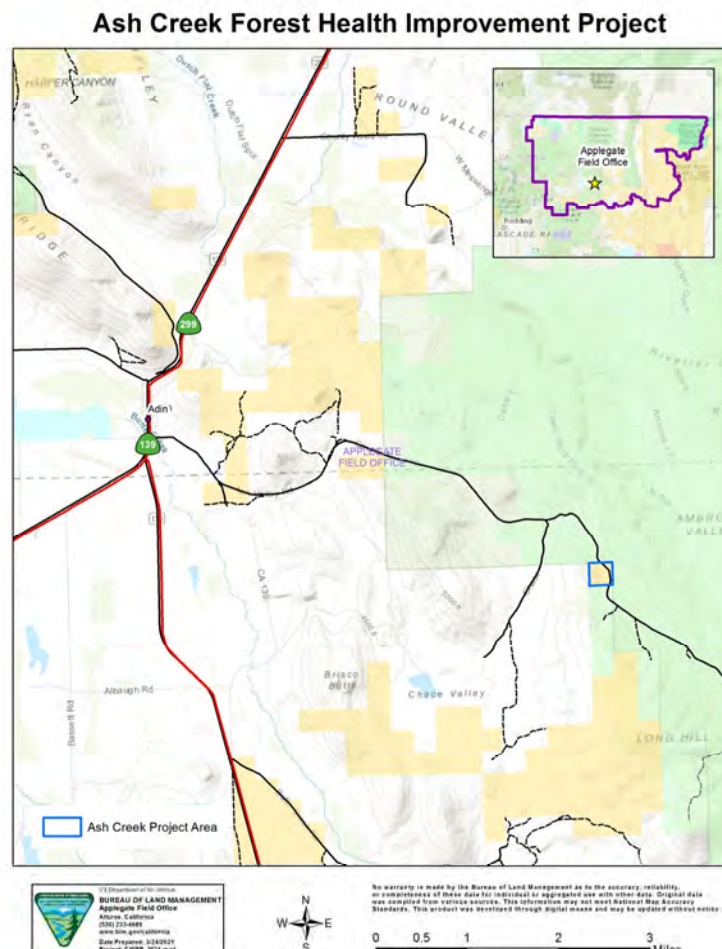
Agency or Agencies: BLM

Project Name: Ash Creek Forest Health Project

Project Coordinates: N41.16726 W120.84924

Summary of Project: The purpose of the project is to thin an overstocked 40 acre pine/cedar/juniper stand to achieve the desired stocking level and to increase health and vigor of the stand. Thinning would be accomplished through the usage of traditional ground-based timber harvesting systems (feller-buncher, skidder, delimeter, and loader). The the contract will be awarded sometime this spring and operations would likely begin in May or June. Harvesting operations are anticipated to take no more than three weeks to complete. The unit is located near the town of Adin, California. Slash generated from harvesting activities will be piled and burned when conditions permit burning operations to commence. Implementation of this project was further delayed due to other office priorities.

Project Map:



2021 Lassen County CWPP Work Plan

WUI Area: Non-WUI

Funding: Funded

2021 Implementation

Number of Acres: 1732

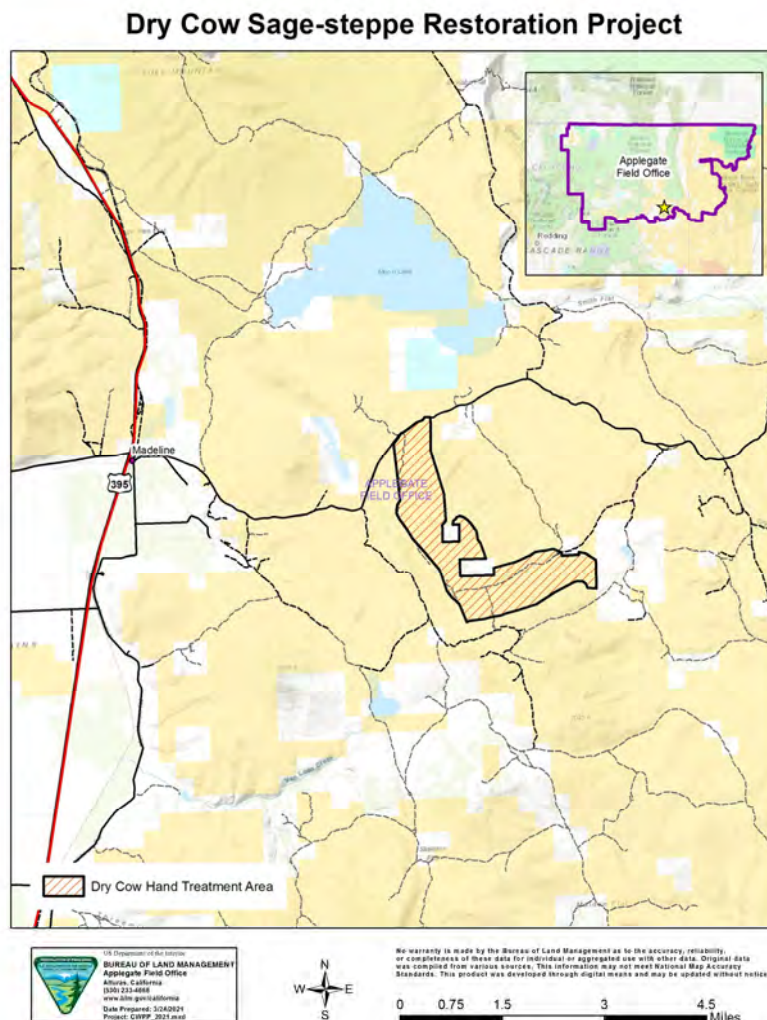
Agency or Agencies: BLM and NRCS

Project Name: Dry Cow Sage-steppe Restoration Project (Hand Treatment)

Project Coordinates: N41.03270 W120.38036

Summary of Project: The purpose of this project was to significantly reduce juniper canopy cover in designated habitat for greater sage-grouse east Madeline, CA off of Clarks Valley Road. Two treatment methods were utilized to treat juniper based on the percentage of juniper canopy cover. Branches on trees in areas with less than 10% juniper canopy cover were “lopped-and-scattered”. On sites with greater 10% canopy cover the trees were cut into short lengths and the boles and limbs piled. Approximately 1,461 acres would be “lopped-and-scattered” and 268 acres were cut-and-piled within the Dry Cow project area. This project was implemented as part of an ongoing series of sage-steppe restoration projects aimed at improving habitat for greater sage-grouse which is a BLM sensitive species. The project was completed in August of 2020 by DL Reforestation.

Project Map:



2021 Lassen County CWPP Work Plan

WUI Area: Non-WUI

Funding: Funded

2021 Implementation

Number of Acres: 1404

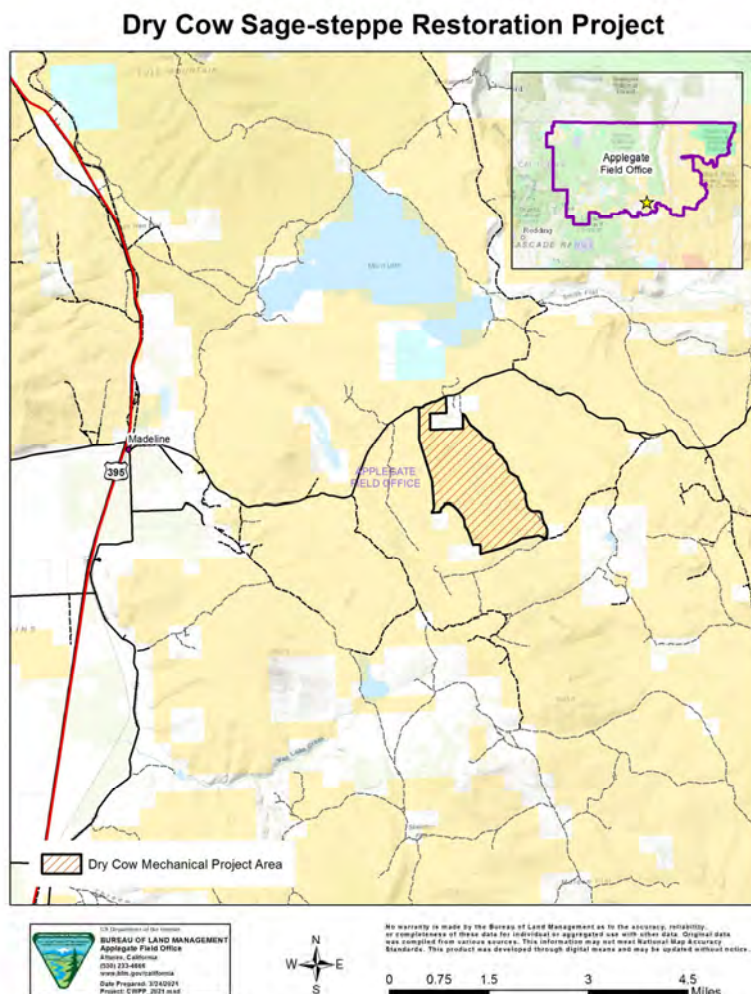
Agency or Agencies: BLM, NRCS, and Cal-Deer

Project Name: Dry Cow Sage-steppe Restoration Project (Mechanical)

Project Coordinates: N41.04446 W120.37418

Summary of Project: The purpose of this project is to focus on reducing juniper trees utilizing mechanical equipment in designated habitat for greater sage-grouse. The use of mechanical equipment such as feller-bunchers and rubber tired skidders would be used to reduce juniper densities in areas with canopy cover exceeding 15% and slopes less than 35%. Up to 1405 acres would be treated using mechanical equipment within the Dry Cow project area. This project is part of an ongoing series of sage-steppe restoration projects aimed at improving habitat for greater sage-grouse which is a BLM sensitive species. In addition, this is a joint project between the BLM, NRCS, and Cal-Deer Association. Currently, 675 acres are contracted through the NRCS to be treated May 2021 and December 2023.

Project Map:



2021 Lassen County CWPP Work Plan

WUI Area: Non-WUI

Funding: Funded

2021 Implementation

Number of Acres: 15,147

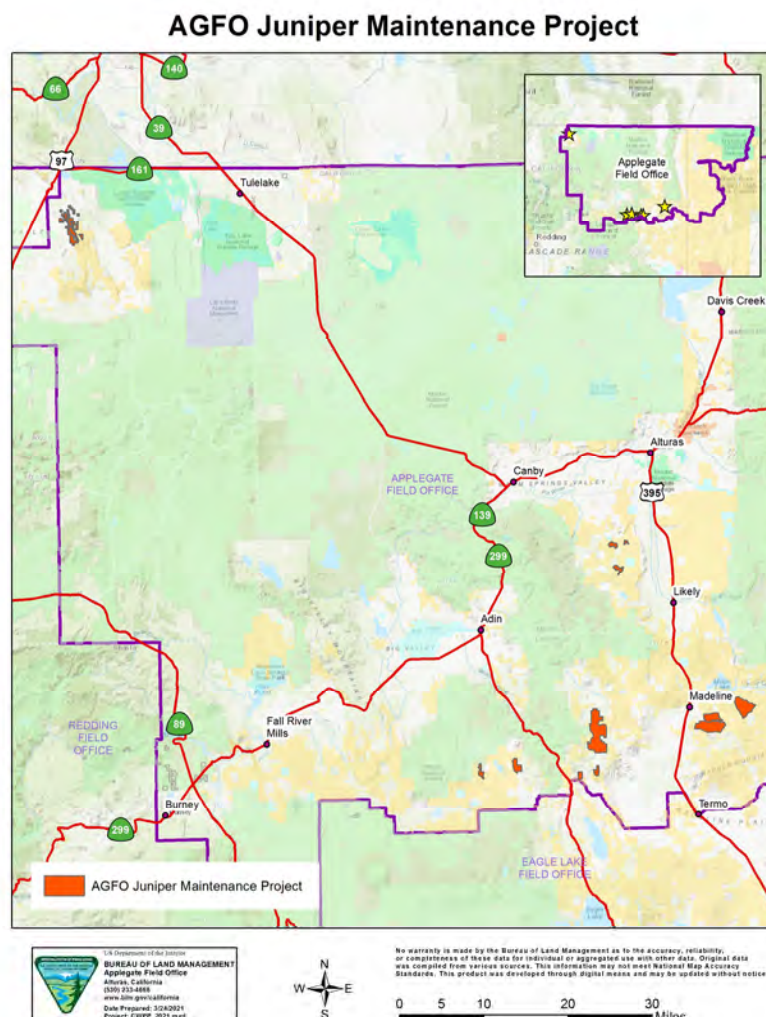
Agency or Agencies: BLM

Project Name: AGFO Juniper Maintenance Project

Project Coordinates: N41.01605 W120.49113

Summary of Project: The purpose of this project is to perform maintenance work on existing juniper reduction projects that were completed between 1997 and 2013 within public lands managed by the Applegate Field Office. Maintenance actions would focus on hand treating newly emerging juniper trees within previously treated sage-steppe restoration projects areas. A total of 15,147 acres of habitat restoration maintenance would be completed over the 10 to 20 year period. Hand held equipment such as chainsaws, loppers, and clippers would be used to perform maintenance actions. Cut material will be lopped-and-scattered and allowed to decompose naturally within the treated areas. Currently, one-third of the identified acres have been awarded and work is scheduled to begin in the summer of 2021.

Project Map:



2021 Lassen County CWPP Work Plan

WUI Area: WUI

Funding: Partially Funded

2021 Planning

Number of Acres: 300

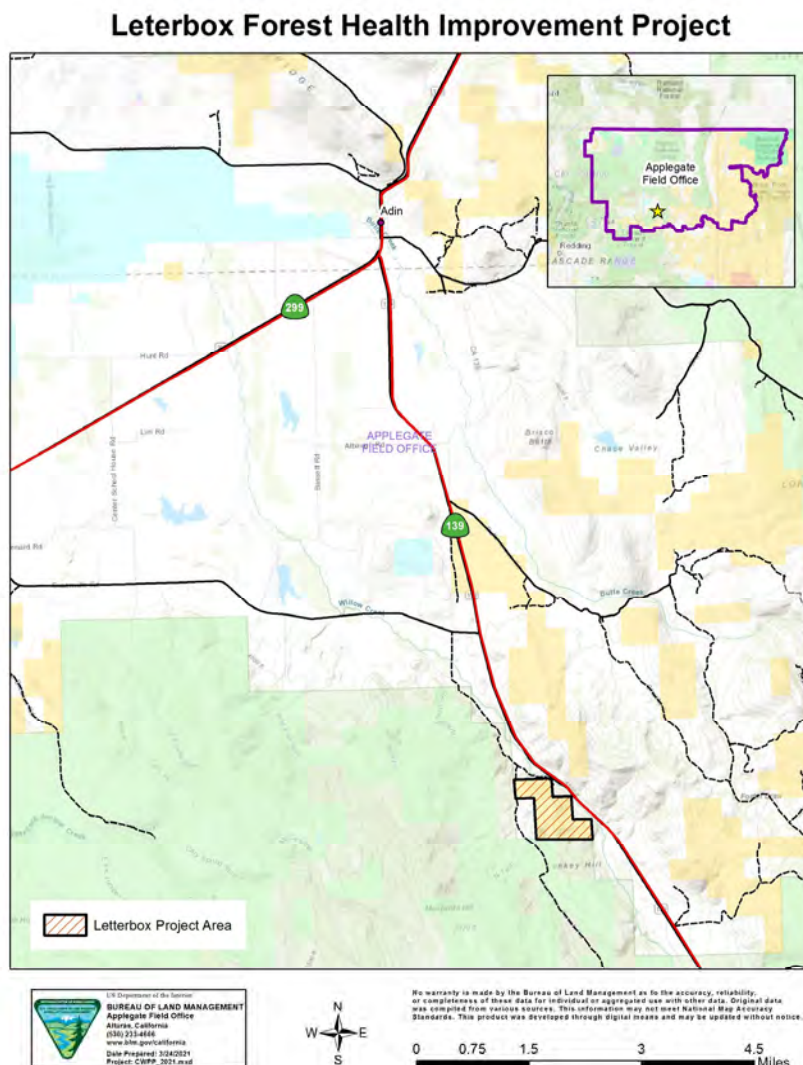
Agency or Agencies: BLM

Project Name: Letterbox Forest Health Project

Project Coordinates: N41.07887 W120.90416

Summary of Project: The purpose of this project is to thin approximately 300 acres of Jeffery and ponderosa pine approximately six miles south of Adin, California off of Highway 139 to achieve the desired stacking level and to increase the health and vigor of the stand. In addition to thinning, broadcast burning would also be utilized to reintroduce fire into low elevation pine stands. Project implementation was delayed due to other office priorities. The completion of required NEPA documents is scheduled to begin in the fall of FY 22 with implementation beginning in late FY 22 or early FY 23.

Project Map:



2021 Lassen County CWPP Work Plan

WUI Area: Non-WUI

Funding: Funded

2021 Implementation

Number of Acres: 648

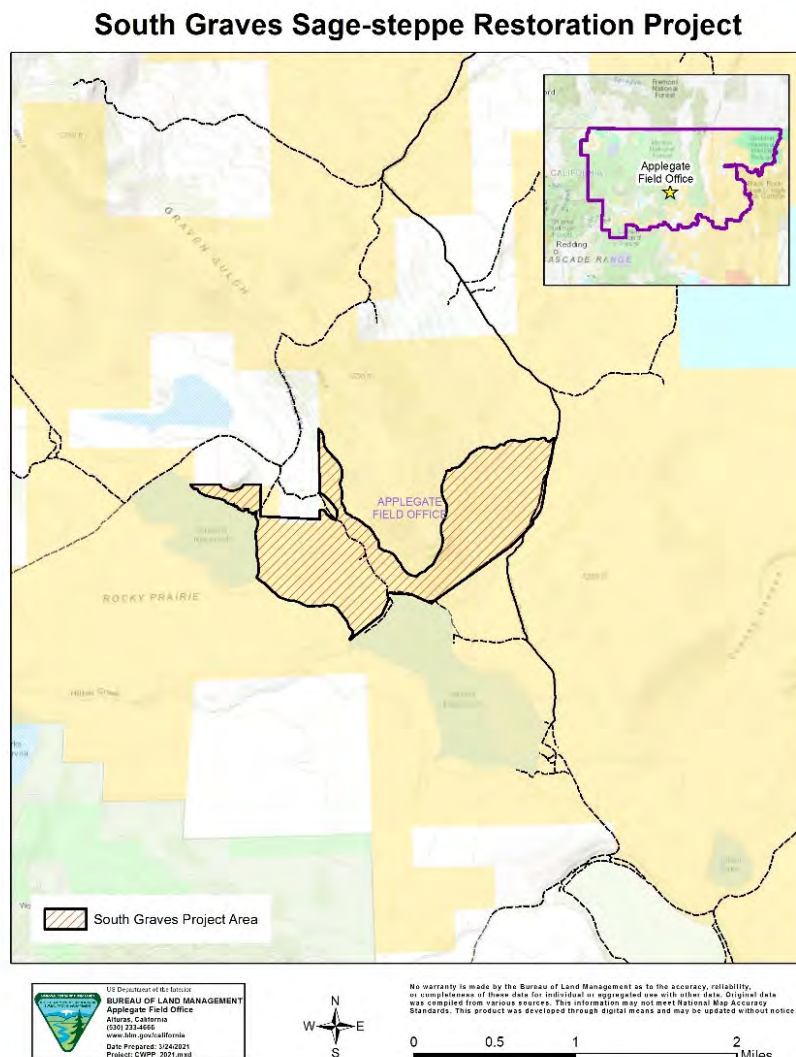
Agency or Agencies: BLM, NRCS, and Cal-Deer

Project Name: South Graves Sage-steppe Restoration Project

Project Coordinates: N41.28195 W120.63728

Summary of Project: The purpose of this project is to reduce juniper cover in designated habitat for mule deer and pronghorn. Mechanical equipment would be utilized to cut and skid material to a landing to be chipped or piled into doodle bundles (piles of 3-7 trees) to be burned by agency fire staff at a later date. NEPA was completed for this project in August of 2020 and the implementation of the project is scheduled to begin in late 2021 once the arch survey is completed. We are looking at securing funding to chip-and-haul the cut material as the roads have since been repaired by the county. Additionally, the usage of chip-haul versus piling would reduce the amount of burning by the fire staff.

Project Map:



2021 Lassen County CWPP Work Plan

WUI Area: WUI

Funding: Partially Funded

2021 Implementation

Number of Acres: 650

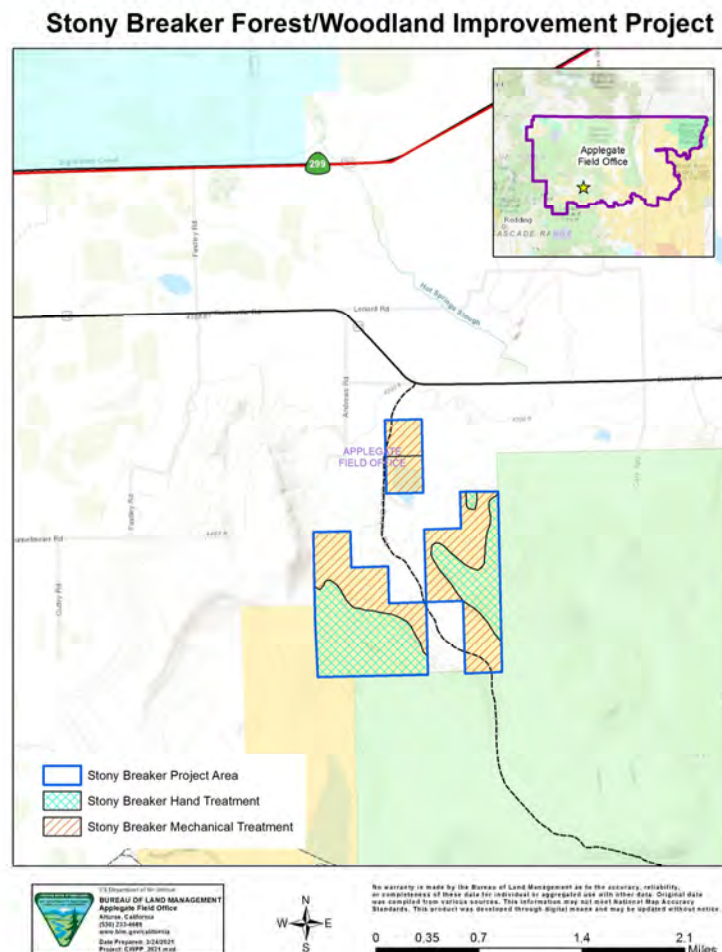
Agency or Agencies: BLM, NRCS, Cal-Deer, and Pit River RCD

Project Name: Stony Breaker Juniper Reduction Project

Project Coordinates: N41.10594 W121.03499

Summary of Project: The goal of this project is to improve habitat by promoting the development of early seral species through the removal of late seral species such as juniper and reducing hazardous fuel accumulation using prescribed fire. To accomplish these goals, treatments would focus on reducing juniper canopy cover through hand or mechanical treatment methods by at least 75% and reducing post-treatment surface fuels by at least 50% within the identified treatment areas. Mechanical equipment would be utilized to cut and skid material to a landing to be chipped or piled into doodle bundles to be burned by agency fire staff at a later date. Areas that cannot be mechanically treated will be treated using chainsaws to lop-and-scatter or cut-and-pile juniper. NEPA was completed for this project in August of 2020 and funding requests were made in March of 2021. In addition, all clearance work was also completed in FY 20. This project will likely be a joint funded project between the BLM, NRCS, Cal-Deer, and Pit River RCD. The project area is located near Bieber, California.

Project Map:



2021 Lassen County CWPP Work Plan

WUI Area: non-WUI

Funding: Funded

2021 Implementation

Number of Acres: 492

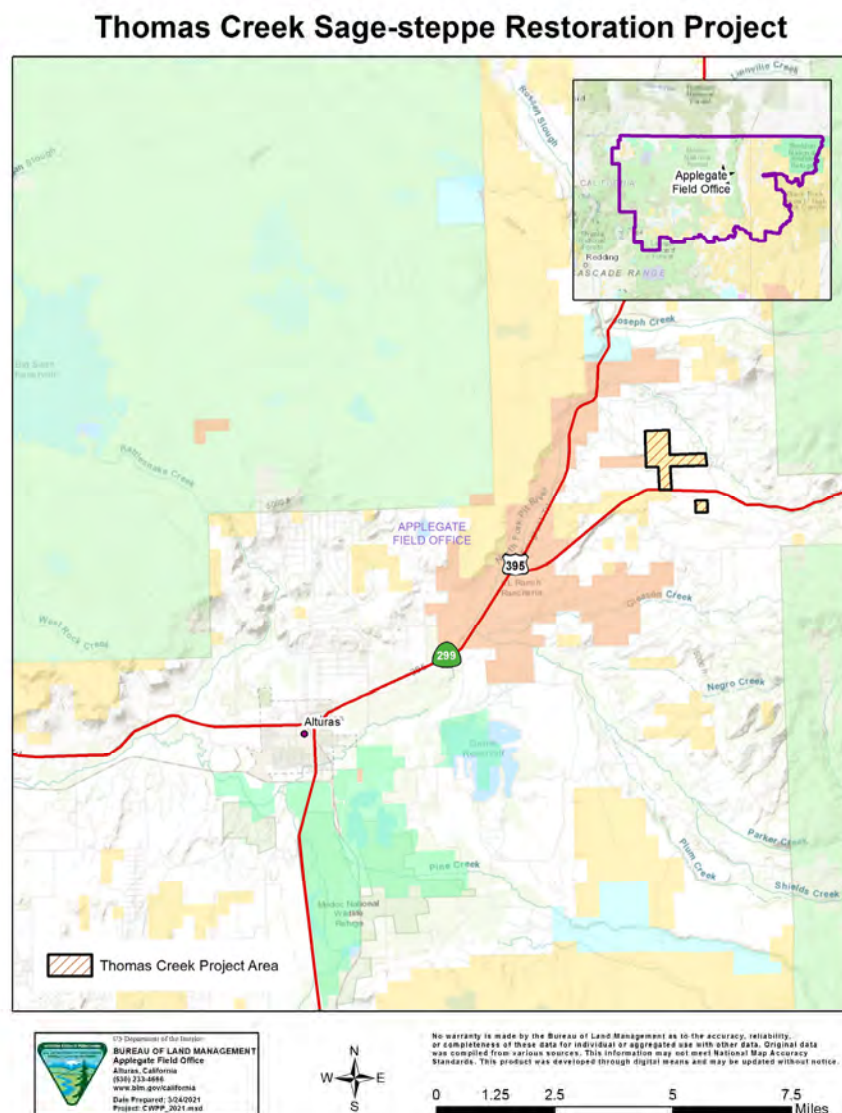
Agency or Agencies: BLM

Project Name: Thomas Creek Sage-steppe Restoration Project

Project Coordinates: N41.57157 W120.39628

Summary of Project: The purpose of this project was to reduce juniper canopy cover in designated winter habitat for mule deer near Alturas, California. Approximately 212 acres were cut-and-piled using hand crews in the fall/winter of 2018 and 2019. Remaining acres within the treatment area were lopped-and-scattered during the same time period. All piles were burned using agency fire personnel in the winter of 2020/21. The project is now complete as of January 2021.

Project Map:



2021 Lassen County CWPP Work Plan

WUI Area: Non-WUI

Funding: Funded

2021 Implementation

Number of Acres: 2436

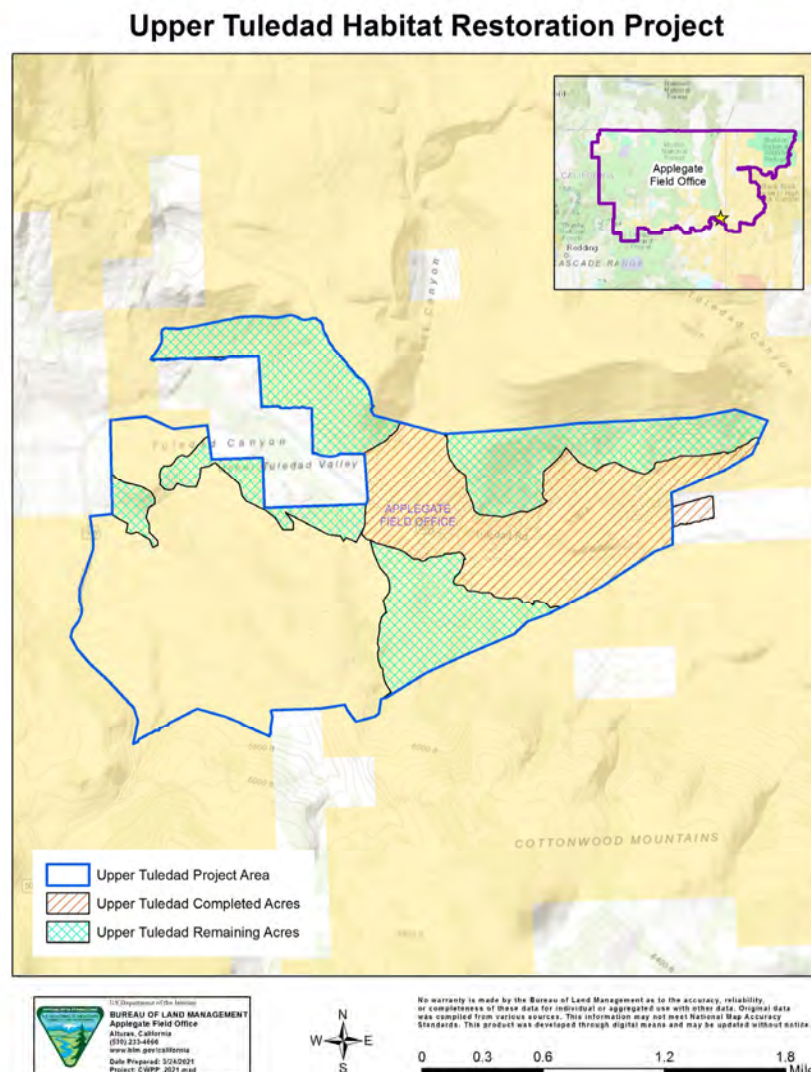
Agency or Agencies: BLM, NRCS, and Cal-Deer

Project Name: Upper Tuledad Sage-steppe Restoration Project

Project Coordinates: N41.02132 W120.06288

Summary of Project: The purpose of this project is to reduce juniper cover in designated habitat for mule deer, pronghorn, and greater sage-grouse. A combination of mechanical (skid steer) and hand equipment (chainsaws) have been utilized to pile juniper. Over the past three years, approximately 560 acres have been treated and approximately 775 acres remain untreated. In August of 2020, the W-5 Cold Springs fire burned a portion of the project area. Crews are anticipated to begin work again in the summer of 2021 on the southern portion of the project area.

Project Map:



2021 Lassen County CWPP Work Plan

WUI Area: WUI

Funding: Planning/Not Funded

2021 Planning

Number of Acres: 592

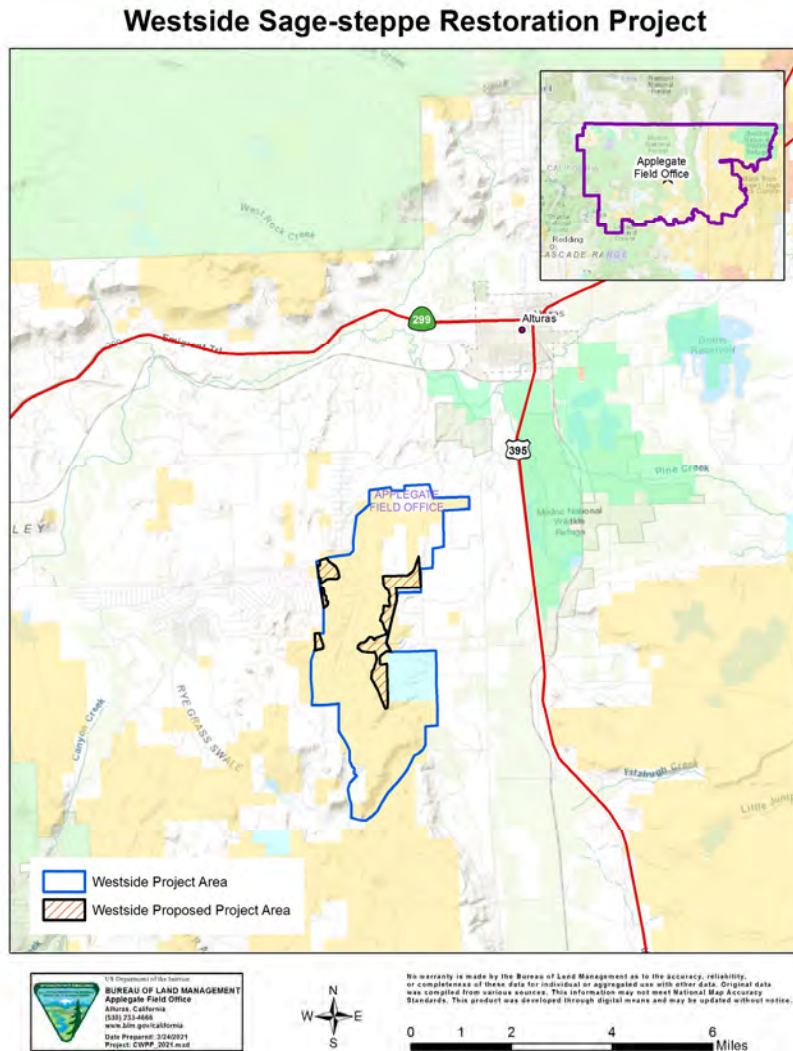
Agency or Agencies: BLM-NRCS

Project Name: Westside Sage-steppe Restoration Project

Project Coordinates: N41.40965 W120.61502

Summary of Project: The purpose of this project is to reduce juniper cover in designated habitat for mule deer through the usage of mechanical equipment that would be utilized to be piled into doodle bundles (3-7 trees) to be burned by agency fire staff at a later date. This project is in the intial planning phase and will hopefully be implemented in FY22. Furthermore, the project maybe extended to the west to treat juniper in close proximity to homes within the Cal Pines community. Funding for this project is not yet secure; however, we are looking at inetrnal and external sources of funding to proceed.

Project Map:



2021 Lassen County CWPP Work Plan

WUI Area: Close to Spalding

Funding: Planning/Not Funded

2021 Planning

Number of Acres: 6,300

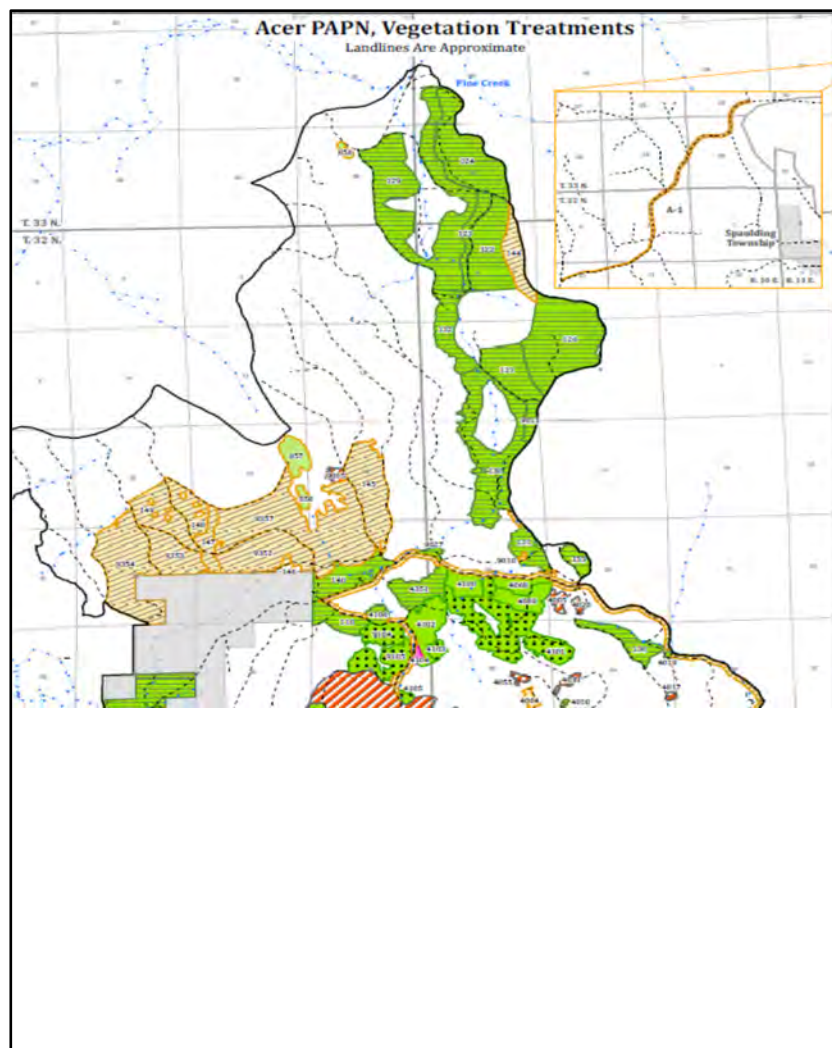
Agency or Agencies: USFS

Project Name: Acer Project

Project Coordinates: N40.65973 W120.88660

Summary of Project: The desired conditions for the Acer Project area include: 1) healthy forest conditions that are characterized by more open forested stands dominated by fire-resilient tree species, reduced surface fuel loads and ladder fuels where periodic low-intensity surface fires can be re-introduced and where wildfires can be safely fought, 2) forest areas with reduced tree densities that decrease risk of mortality from insects, drought, and disease, 3) functioning aspen, meadow and riparian systems which contribute to landscape biodiversity, and 4) cost effective treatments that contribute to community stability.

Project Map:



2021 Lassen County CWPP Work Plan

WUI Area: Susanville

Funding: Partially Funded

2021 Implementation

Number of Acres: 586

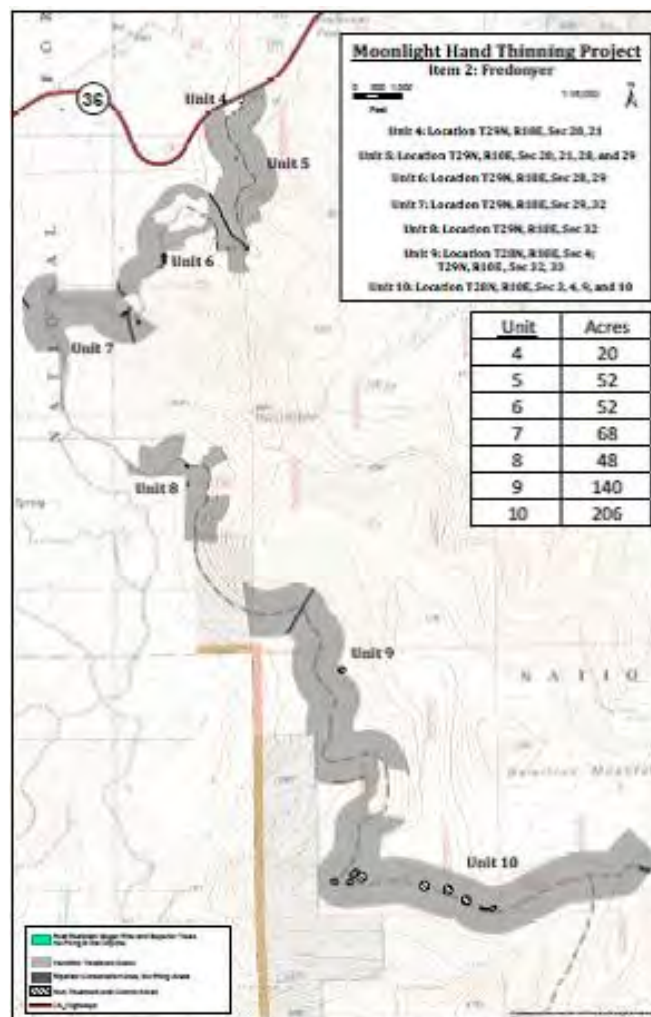
Agency or Agencies: USFS and CAL FIRE

Project Name: Moonlight Hand Thinning Project: Fredonyer

Project Coordinates: N40.35549 W120.87188

Summary of Project: Implementation began in the 2018. Hand thinning of conifers and brush, and hand piling the natural and activity generated surface fuels along Forest Road 29N46 for the purpose of removing ladder fuels and increasing canopy base heights within the treated stands. Due to steep slopes, erosive soils, and canopy-cover restrictions, fuel reduction treatments within the project area would be limited to hand thinning treatments. All trees 6 inches diameter breast height (DBH) and less, and all brush will be cut within a 500 foot buffer along designated roads.

Project Map:



2021 Lassen County CWPP Work Plan

WUI Area: Susanville

Funding: Partially Funded

2021 Implementation

Number of Acres: 585

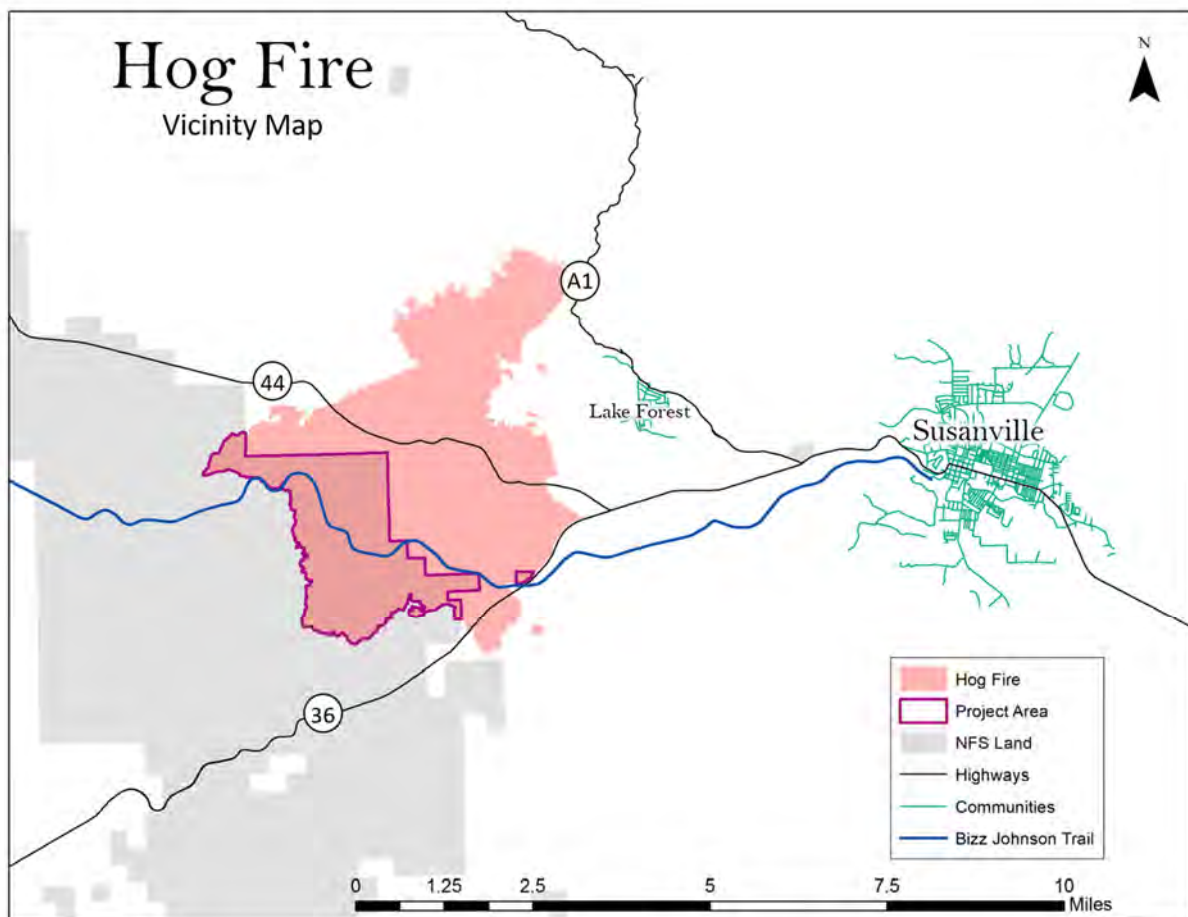
Agency or Agencies: USFS

Project Name: Hog Fire Salvage and Rehabilitation Project

Project Coordinates: 40.413089 120.0835459

Summary of Project: The purpose of this project is to remove concentrations of hazard trees along open system roads and recreation areas, recover the value of fire damaged trees, establish a new cohort of young trees within tree removal areas, rehabilitate watershed features damaged by the fire, and protect aspen regeneration within stands that are now exposed due to the fire.

Project Map:



2021 Lassen County CWPP Work Plan

WUI Area: Close to Spalding

Funding: Partially Funded

2021 Implementation

Number of Acres: 4,600

Agency or Agencies: USFS

Project Name: Whaleback Fire Salvage Project

Project Coordinates: N40.63396 W120.86851

Summary of Project: Unfortunately, the timber sale did not remove the majority of the biomass; biomass removal still needed in project area. Salvage harvest operations would use ground-based, mechanical harvesting to remove or rearrange fire-killed and fire-injured trees from treatment areas (2,865 acres). Sawlogs and biomass would be removed. Hand felling would be used if mechanical treatments are cost prohibitive or in areas inaccessible to mechanical equipment. Approximately 37 miles (up to 1,750 acres) of hazard tree removal would occur along Forest Service roads and County Road A1. Fuels reduction treatments would be implemented in areas where fuel loading and dead trees exceed snag and log retention guidelines following salvage removal.

Project Map:



2021 Lassen County CWPP Work Plan

WUI Area: Janesville

Funding: Partially Funded

2021 Implementation

Number of Acres: 4,200

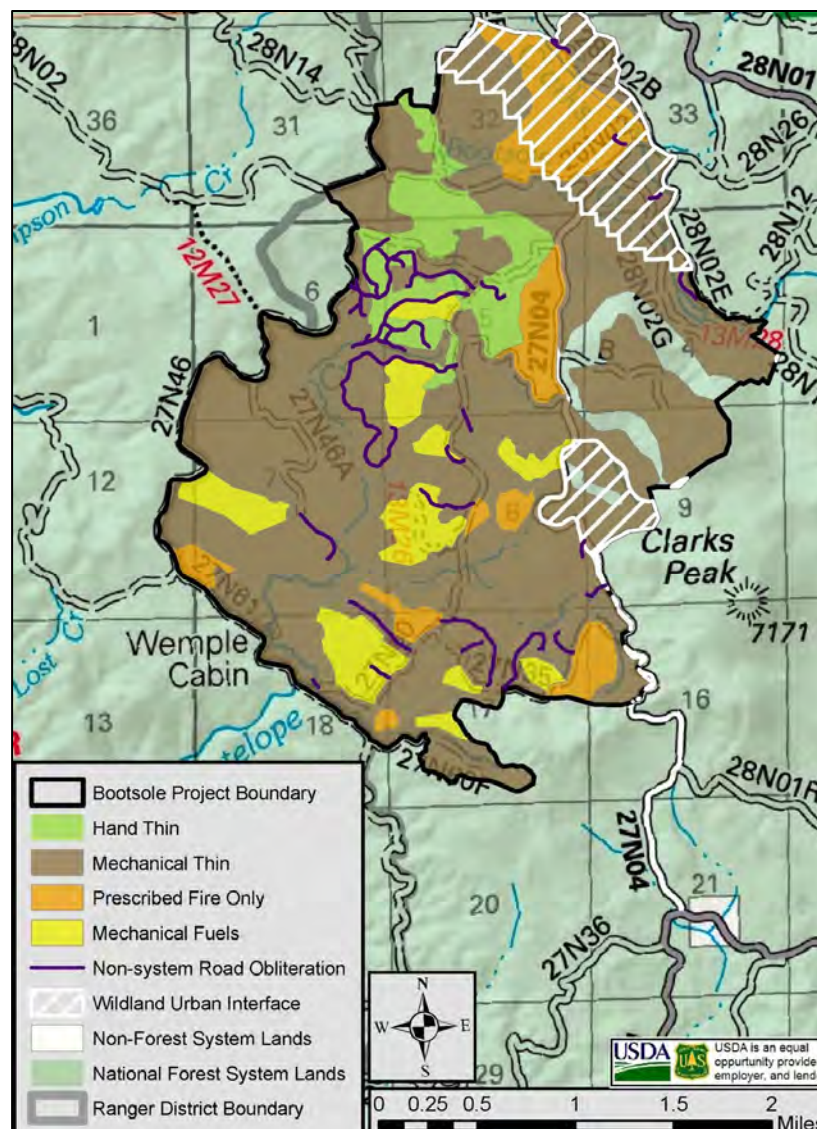
Agency or Agencies: USFS-Plumas National Forest LFSC

Project Name: Bootsole

Project Coordinates: 40.21998 N 120.5421W

Summary of Project: The Bootsole Project intendeds to reduce hazardous fuels, improve forest health, improve wildlife habitat, and improve watershed condition within a project area of approximately 4,500 acres on the Beckwourth Ranger District, Plumas National Forest, Plumas County, California. The project proposes treatments on approximately 4,200 acres and includes mechanical thinning, mechanical fuels treatments (chipping, mastication, grapple piling), hand thinning, prescribed fire, and road maintenance, road reconstruction, and obliteration of non-system roads.

Project Map:



2021 Lassen County CWPP Work Plan

WUI Area: Westwood/Clear Creek

Funding: Planning/Not Funded

2021: Implementation

Number of Acres: 114.0

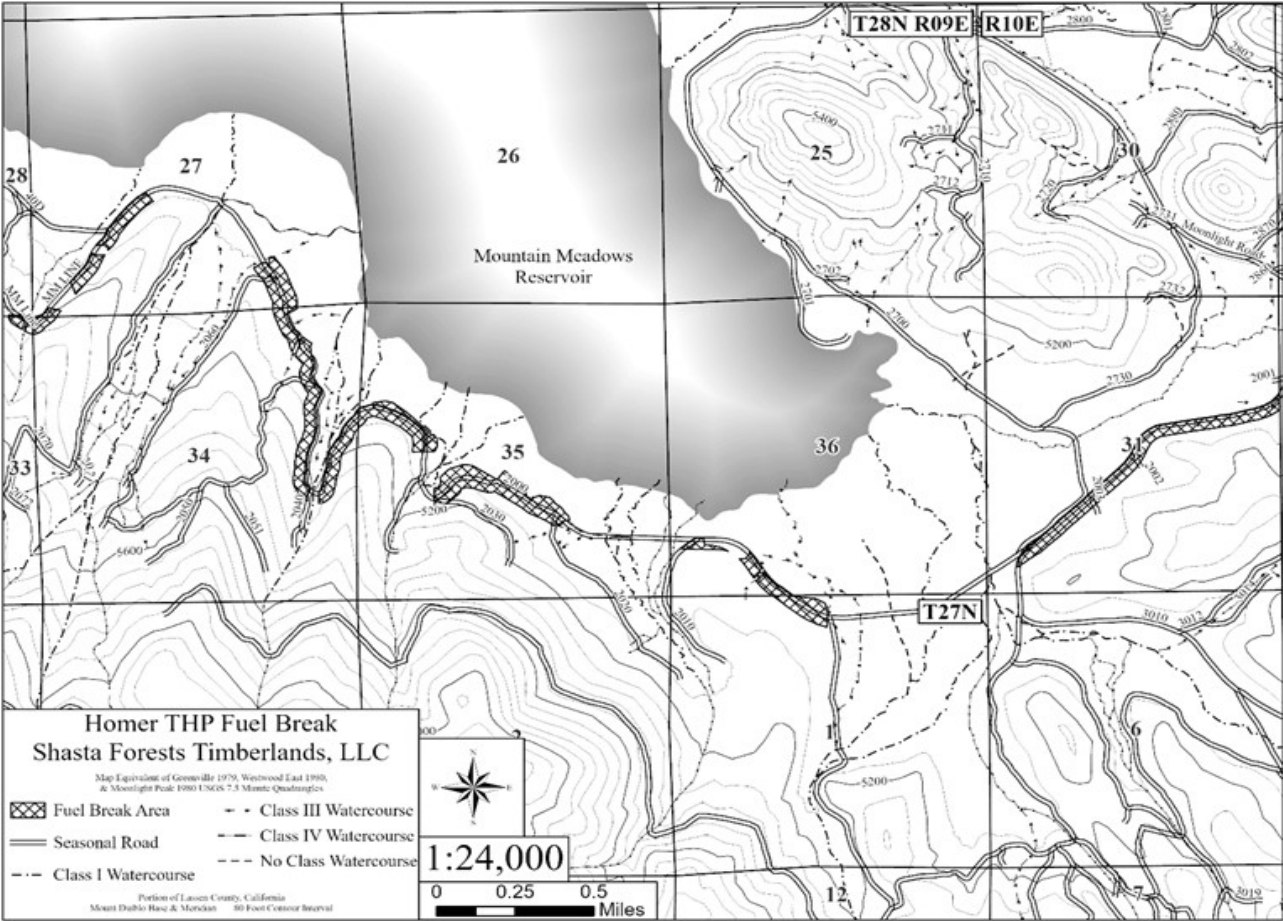
Agency or Agencies: W.M. Beaty & Associates, Inc.

Project Name: Homer THP Fuel Break

Project Coordinates: N 40.2371 W 120.9492

Summary of Project: The objective of the project is to implement a shaded fuelbreak along W.M. Beaty’s 2000 road. Primary work will be the thinning of overstocked pine and fir stands, while removing understory vegetation. Dominant and codominant conifers will represent the majority of retained trees. The area is used recreationally by the public for fishing, hunting, and walking. The project will benefit multiple landowners by protecting surrounding timber, meadow, and ranch lands as well as the nearby residential areas of Clear Creek and Westwood, and nearby utility resources (electrical lines and Indian Ole Dam).

Project Map:



2021 Lassen County CWPP Work Plan

WUI Area: Westwood

Funding: Planning/Not Funded

2021 Implementation

Number of Acres: 191

Agency or Agencies: W.M. Beaty & Associates

Project Name: Westwood Community Fuelbreak

Project Coordinates: -121.97233 40.30357

Summary of Project: Mastication and herbicide treatment to establish new fuelbreak

Project Map:

